



# Shellegraph

Houston Refinery

No. 44

Friday, November 6, 1970



The new face of Shell, Hilda Chevalier is the new receptionist who greets visitors to the Refinery in the Main Office.

## REFINERY ADDING \$ 3 MILLION SYSTEM TO WASTE WATER TREATING FACILITIES

Shell Oil Company expects to have the \$3 million addition to its Houston Refinery waste water treating system fully operational within the next few months.

A. G. Smith, Process Superintendent, made the announcement during an appearance before the Texas Water Quality Board.

"We are building these new facilities with an eye to the future," Smith said. "This system should permit us to satisfy expected effluent water quality requirements in the Houston Ship Channel for several years to come. Part of the new facilities are already in service, and we expect to have the balance on stream before year's end," Smith said.

In discussing the new facilities, Smith pointed out that the expanded waste water treating system will not only increase the amount of water which can be handled, but will improve the overall quality of the total refinery effluent.

The Houston Refinery's present effluent discharge quality surpasses the Zone II Houston Ship Channel requirements. The new facilities will achieve further improvement.

## Platformate Isn't the Only Winner CALIFORNIA SERVICE STATION WINS NATIONAL LANDSCAPING AWARD

A Shell service station in Carmel, California has received the highest national award for landscaping excellence by the American Association of Nurserymen. The award was presented by Mrs. Walter J. Hickel, wife of Secretary of the Interior, at the association's 18th annual awards program in Washington, D.C.

Shell was the only oil company selected to receive the top award. In addition, four out of five service stations selected to receive national runner-up awards were Shell stations, all in California.

More than 200 entries were received by the AAN from industrial municipal and commercial organizations, with nine entries winning first place awards and 36 receiving runner-up awards.

S. E. Orisek, Shell's San Jose, California, district manager, describes the winning station as "a specially-designed three-bay contemporary rustic which matches the design of a nearby resort hotel." It was completed in 1968 and features masonry walls and low-level lighting which accentuates the landscaping.

Approximately 40 percent of the 20,000 square foot service station site is planted with 18 trees and 135 spreading plants representing seven varieties of ground cover.

## WIVES INVITED TO CAROL LANE TALK AT SCHOOL FOOD SERVICE MEETING

Carol Lane, Shell's Women's Travel Director, will speak at the November 10 meeting of the Pasadena School Food Service at South Houston High School.

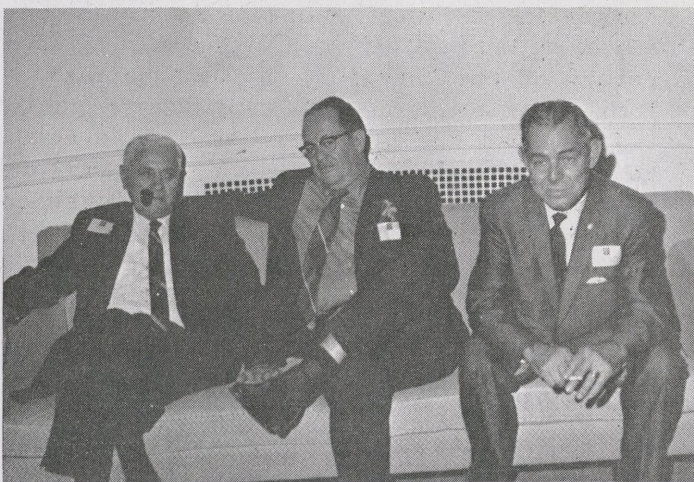
Mrs. Leora Roller, President of the Service and wife of M. L. Roller, Pipefitter #1, invites Shell wives to the meeting to be held at 3 p.m. in the school cafeteria. South Houston High School is at 3820 S. Shaver.

Miss Lane, who travels 70,000 miles a year investigating and testing ideas, plans gadgets and modes of travel, will pass along a few helpful hints on family travel by car. When speaking to women's groups, Miss Lane demonstrates how to pack a wrinkle-free suitcase, how to plan a maximum wardrobe that fits into minimal space and converts into costumes for every vacation need, and how to look and feel your best during a trip. Speaking from firsthand experience, she will tell how to keep children happily occupied in the car on long and short trips.

EXECUTIVE COUNTRY CLUB IS SCENE OF SUCCESSFUL 10 AND OVER PARTY...



Employees and retirees were in a festive mood at the Ten and Over Party as they sampled the roast beef, ham and chicken as well as the many other dishes.



E. G. Griffin, V. L. Samford and A. W. Fields visited together during the course of the day.



Above C. K. Cook and J. W. Mudd sampled the hors d'oeuvres while at left John Herrmann talked to retiree M. D. Cothran.



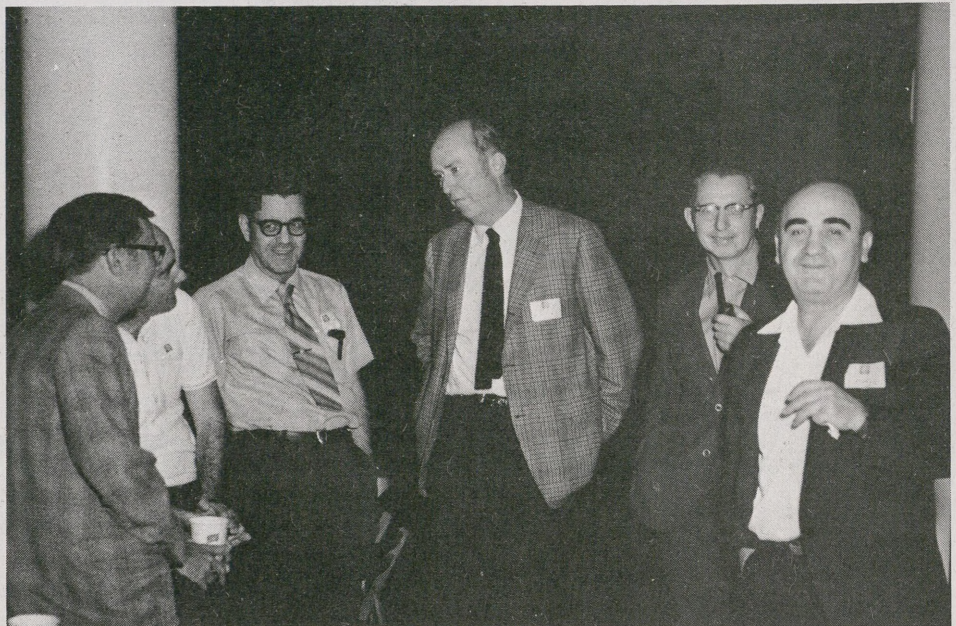
Above are E. H. Walley and A. H. Muecke, right, retirees Cotton Shoemaker and C. C. Suggs recall the old days.



FOR CAREER EMPLOYEES AND PENSIONERS WHO RENEWED ACQUAINTANCES



Above Hortense Hines and Mary Faye Sherman greet Hoss Matthews. At right, Joe Leonard, Norm Duncan, R. J. Clerc, John Pratt, R. J. Olson and V. Anastasoff had a lively discussion.



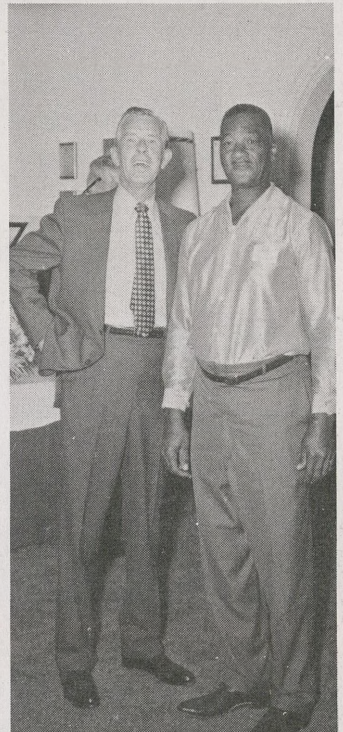
"You don't work at Shell for a lifetime without making a lot of friends. The Ten and Over Party gives the pensioners and employees a chance to see their old friends," said one guest at last Saturday's party at the Executive Country Club.



Above, H. M. Hancock, Hugh Granberry and C. W. Weaver got reacquainted.

Many pensioners came early for this once-a-year chance to recall the good old days. The party began at 11 a.m. and ended at 5 p.m. There was the Nebraska-Colorado game to watch on color TV and people to break bread with.

A stranger may have gotten lost among the handshakes and "remember whens," but there were no strangers at this party. All the guests shared at least one thing in common: a career with Shell.



Talking (above) were C.G. Crum and Gus Lunnon. Below, Mrs. L. R. Calhoun, C. D. Vestal, Mrs. M. E. Gremillion, Bob Mann, A. B. Evans, Roger Hargrove, L. Smith, G. Robinson, Luther Burnett took advantage of the day's events with the hundreds of other guests.



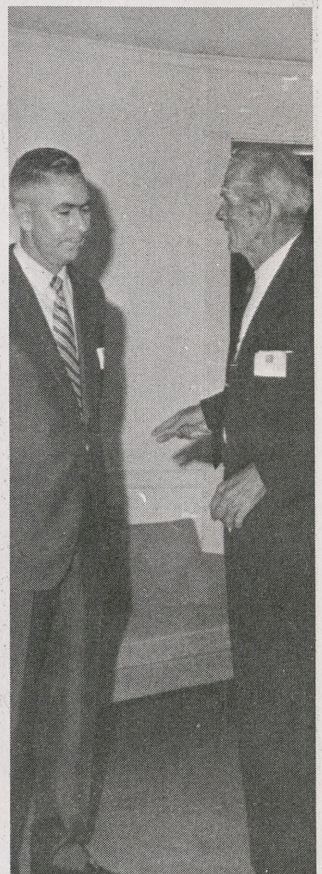
PENSIONERS CAME EARLY, THEY HAD LOOKED FORWARD TO PARTY...



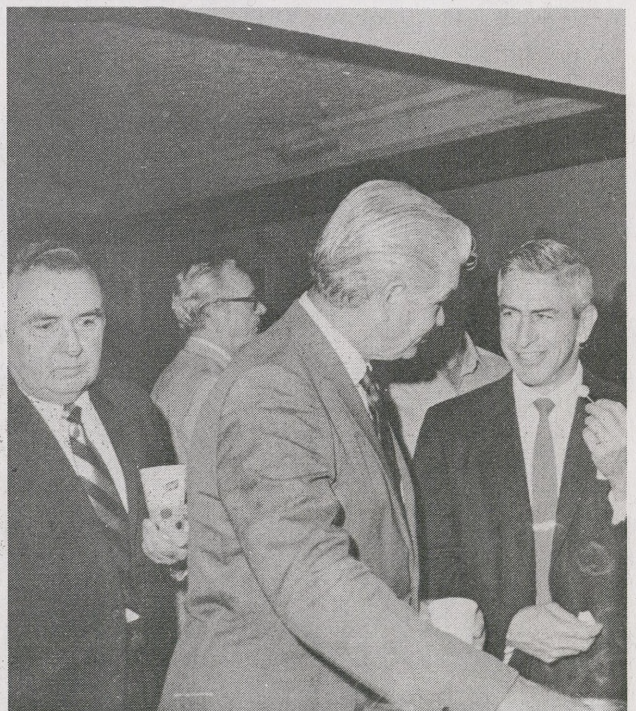
Above, J. D. Creeks, S. C. Coleman and Hillary Guillery enjoyed the meal. Below were employees and pensioners A. E. Walters, G. A. Smith, R. M. Mace, M. L. Roller, P. H. Ulmer and J. C. MacGregor.



Above, G. L. Boatright gives a name tag to Pete Gilliam as T. J. Davis waits to register while the crowd came pouring in. Below right, D. R. Stewart talks to Joe Hinton, one of the many retirees who looked forward to the party.



In photos below are M. C. Rodriguez, C. R. Perez, L. W. Smith, A. L. Williams, P. C. Holmes and Murl Milburn.





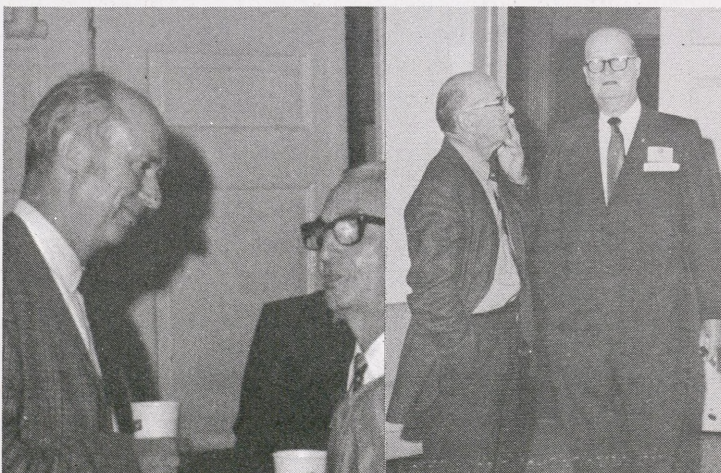
Above, C. H. McMulin and A. C. Smith dined together, center and right are Oris Green, B. Dehoyos, J. D. Masterson, and C. D. Bednar enjoyed the hours of fellowship. Right, the reception committee was kept busy giving name tags.



FOR A WHOLE YEAR, AND THE BIG DAY HAD FINALLY ARRIVED



Smiling faces were everywhere as the yearly event got in full swing. Below, J. G. Pratt and R. G. Funk chatted as Adolf Lindstrom prodded John Wood's memory.



The hors d'oeuvres table was swamped as fellow workers exchanged greetings.

## CONNIE WILSON, MISS TEXAS TEENAGE, IS DAUGHTER OF CHEMICAL EMPLOYEE

How does it feel to have Miss Texas Teenage as a daughter? Ask H. C. Wilson, a counterman No. 1 in the Purchasing Department at Shell Chemical, whose daughter, Connie, recently won that title and represented Texas in the Miss Teenage America Pageant in Palisades, New Jersey.

Connie, an attractive senior at Pasadena High School who models part time, won the Pasadena contest and the Texas competition before going to the national pageant.

The Miss Teenage contests were based on looks, personality and poise, and scholastic ability.



Ellen Romanowsky, Stenographic Section, loved the little cutouts for the nursery given to her at a recent baby shower by fellow female employees.

## TWO RETIREES FETED LAST WEEK



Top, F. D. "Rabbit" Dunham proudly accepted the fishing gear given to him by fellow Engineering Field employees. Bottom, another retiree, Fred Wilson received an attache case and a clock radio.

### FOR SALE

O'Keefe & Merritt stove, extra clean, bargain, oven timer, burner with a brain, rotisserie.

Telephone: 479-1450

Guitar--Prestige box guitar--excellent condition, can be used by student or professional--cost \$180, sell for \$60.

Telephone: 941-4191

Travel trailer--Nomad 1969, \$2650, self contained, air conditioned, separate shower, sleeps six.

Telephone: MI 5-6468

24" riding mower--4½ hp, pneumatic tires, differential, runs & mows good, \$35.

Telephone: HU 5-3064 after 6 & weekends.

'66 Chevrolet 4 door, V8, automatic transmission, power brakes, power steering, factory air, priced to sell this week.

Telephone: 479-2241

30.06 Springfield, bolt action, with Weaver K-4 scope, new barrel and stock.

Telephone: 473-2170

3 bedroom home in Deer Park, central heat, large garage with utility room behind, large bath, fenced backyard with trees, FHA or GI, \$135 a month.

Telephone: 479-1450

Girl Scout bake sale, Saturday, November 4, Market Center, Pasadena, corner of Red Bluff and South Avenue.

### CLASSIFIEDS

Great for retirees, waterfront home in Caney Creek Estates near Sergeant, Texas, built on steel I beam columns, concrete footings, concrete slab, 1800 square feet of living space, completely furnished, 2 baths, boat slip, pier, large lot, near Bay and Gulf, fishing, boating, skiing, hunting, swimming, surfing, will finance part, \$18,500.

Telephone: 946-3435

2-wheel utility trailer, 4x8 ft. bed, with 3 ft. welded-type sides, 2 spare tires, lights.

Telephone: MI 3-1140

1957 Plymouth, \$100.

Telephone: MI 5-3181

Pontiac GTO, 1967, air conditioned, automatic transmission, power steering, tape deck, instrument panel, body and mechanical equipment in excellent condition.

Telephone: 472-0800

'70 Electra, 4-dr. sedan, 14,000 miles, gray with black vinyl top, black interior, stereo AM/FM radio, air, all power, electric seats and windows, tinted glass all around.

Telephone: 645-5310

### Lost

Driver's license, R. L. Gibson.

Telephone: 466-6096