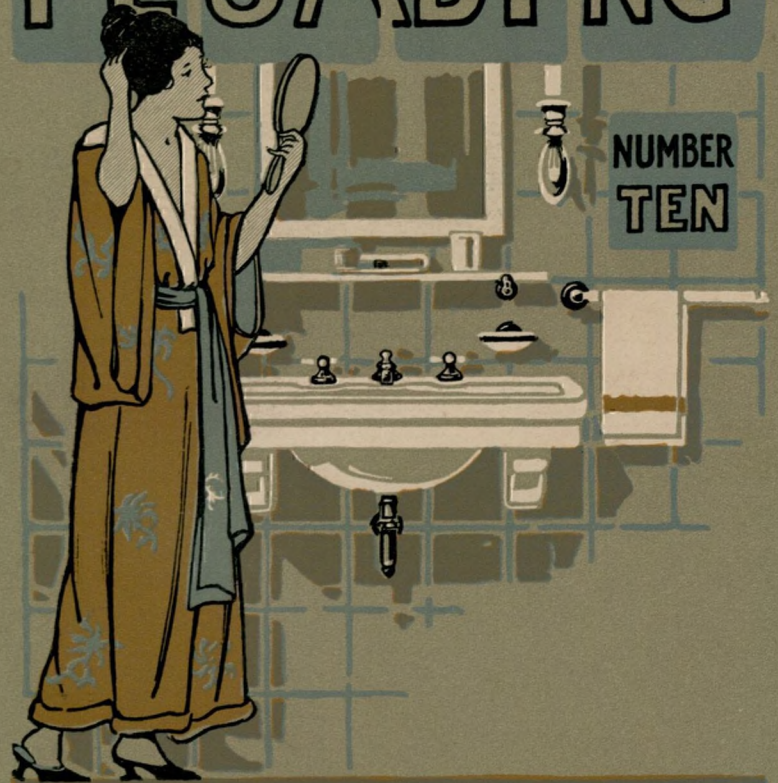


MODERN PLUMBING



THE J. L. MOTT IRON WORKS



MODERN PLUMBING

NUMBER TEN—*Abridged*



THE J. L. MOTT IRON WORKS
TRENTON, N. J.

FIFTH AVENUE AND SEVENTEENTH STREET
New York



PLANT AND GENERAL OFFICES AT TRENTON, N. J.

OUR MANUFACTURING PLANT

THE history of The J. L. Mott Iron Works is one of the most interesting of American business concerns.

In 1828, when the nation was still in its infancy, the original Mott Plant took root in Mott Haven, near New York City. From this humble beginning Mott achievement has steadily kept pace with national progress.

What the American public required in sanitary wares, Mott made it a point to provide—in many instances by anticipation.

After a few years it became apparent that the plant was too small to supply the demands put upon it. Enlargement followed enlargement. Then, in 1894, the potteries were established in Trenton, N. J., where, in 1907, the entire manufacturing plant was concentrated.

Thus, for almost a century, the Mott Industry has grown and thrived. And the reason for this growth is plain: The Mott organization has kept abreast of, or even ahead of, the needs of the American people. New fixtures, thought a luxury a few years ago, are now part of the large daily output.

The feature of concentration is one of very great importance. Manufacturing all goods in one plant assures the proper assembling and fitting of all component parts, enabling correct and complete shipments to be made, and a prompt and efficient service rendered.

PREFACE

THE space allotted to this preface is too small to permit more than a brief summary of the facts necessary to bear in mind when purchasing sanitary fixtures. Regardless of the amount of money to be expended, it is important for those making the selection to know the relative values of various types of fixtures.

While solid imperial porcelain or vitreous china ware are a little more expensive than good quality enameled iron fixtures, the superiority of the all-clay body earthenware with its hard wearing surface will alone repay the additional outlay, yet the added beauty of design and harmony of color for which the earthenware is noted, make it far superior from an artistic standpoint. It would be well for the reader to refer to pages 6 and 7, where will be found a brief outline of the process of manufacture.

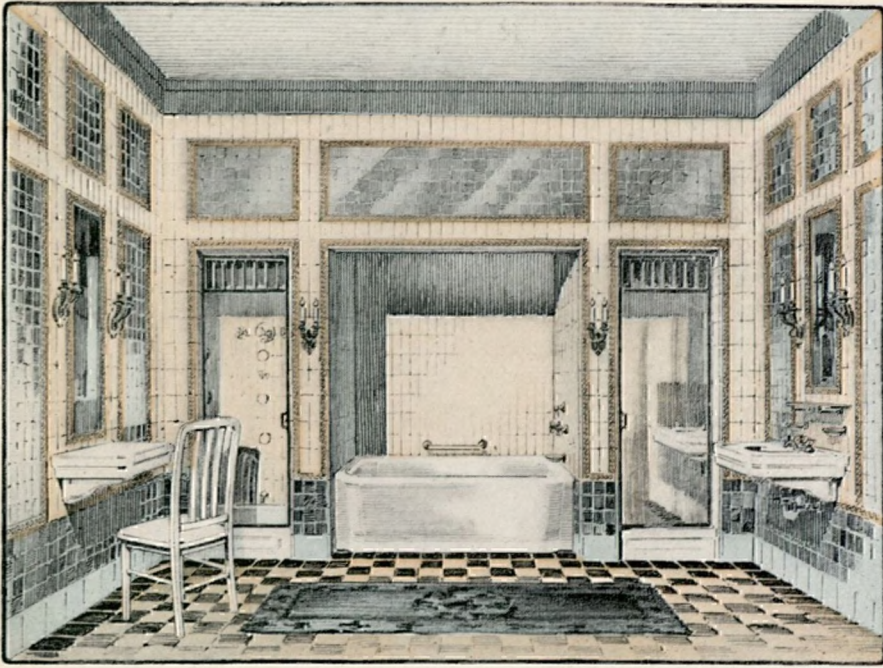
As the cost of installing first-class plumbing fixtures is about the same as for installing a cheaper grade, it is false economy to allow first cost alone to be the determining factor.

Before deciding on any particular type of fixture for a bathroom, a decision should be made as to the material to be used for covering the walls. This is necessary because some fixtures, such as built-in tubs, require a wall of waterproof material.

Tiling is the most practical and beautiful material to use for walls. The same taste and good judgment may be shown in the tiling of a very simple bathroom as for the most elaborate.

A visit to one of our showrooms will help you in selecting not only sanitary fixtures but tiling and bathroom furnishings as well.





The MODERN BATHROOM

THE importance of a properly equipped bathroom in the home is indisputable, and most architects and builders recognize this fact. Indeed, many who can afford to do so, provide a bathroom for each sleeping room or suite.

During the past few years many radical improvements in construction and types of sanitary fixtures have taken place and a perusal of this catalogue should greatly assist those contemplating building or remodeling their bathrooms.

Pages 8 to 17 illustrate model bathroom interiors of wide variety and design, ranging from the finest to the more moderate priced fixtures.

Perhaps the fixture which has gained most in popularity is the shower bath. The modern bathroom is not considered complete without the provision of a shower. The advent of a mixing valve, thermostatically controlled now makes it possible for the bather to regulate and maintain the temperature of the water to suit his individual taste.

The imperial porcelain built-in bath is now also an accepted fact; the noisy water closet has been banished, and in its place we find the quiet-acting syphon jet closet. Before making your selection of fixtures it would be to your advantage to visit our nearest showroom where are displayed model modern bathrooms.

THE MANUFACTURE OF ALL-CLAY BODY FIXTURES

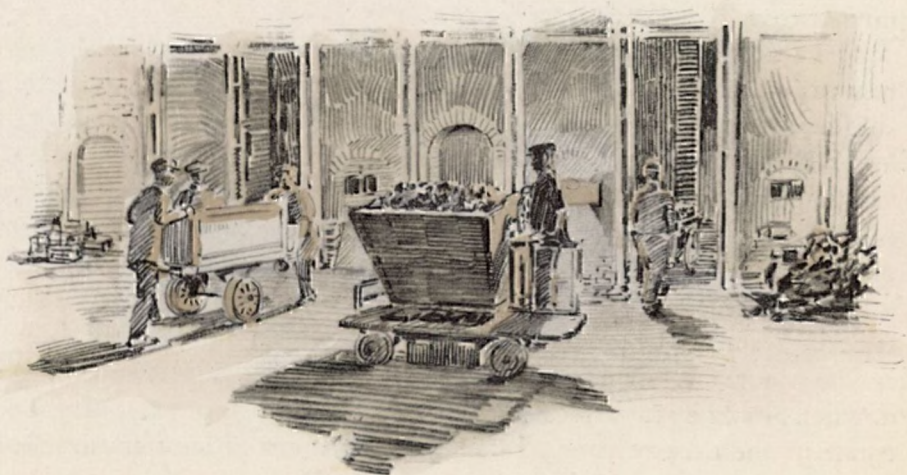
VITREOUS china and solid imperial porcelain fixtures are made of clay, the process of manufacture requiring not only skill but also considerable artistic ability. A brief outline of this process might be interesting to the uninitiated.

The clay is first refined and thoroughly washed until it is free from all foreign matter, after which most of the water is removed from it under pressure.

In this state it is moulded or cast into the form of the fixture allowing for considerable shrinkage. It is then put through a drying process which requires from three to four weeks, depending upon the size of the piece, when it is ready to receive the glaze.

The glaze is prepared in the form of a heavy liquid from a special formula and by a mechanical process adapted for the purpose. After again being dried the piece is ready for the kiln where it remains for a number of days subjected to great heat, averaging 2500 degrees (Fahrenheit).

The important feature in the process of firing these pieces of ware is that the intense heat fuses the glaze integral with the clay body, thereby insuring a smooth, glossy surface of a hardness unobtainable in the enamel on cast iron fixtures. It is this glaze which makes it so easy to clean vitreous china or solid porcelain ware.



PROCESS OF ENAMELING THE CAST-IRON BATH



After the bath is cast, the enamel is applied. The bath is then placed in an enameling oven where it is subjected to about 1800 degrees (Fahrenheit) of heat

ENAMELED iron or porcelain enameled iron as it is usually called, is, as the name implies, iron castings which have been enameled. The sink, lavatory or bathtub as the case may be is first cast in iron, which is then ground smooth and a sizing coat applied, after which it is placed in an enameling oven, where it is heated until it turns a cherry red in color. It is then removed and the enamel applied, after which it is again returned to the oven where the enamel is allowed to bake. This operation is repeated several times until a smooth heavy coat of enamel has been applied. The fixture is then removed and permitted to cool.

The bathtub has always been the most successful enameled iron fixture, when compared with lavatories and sinks, because it is not subjected to the same continuous hard usage. For this reason it is less likely to be stained or chipped.

Enameled iron, however, is in no way comparable to solid imperial porcelain or vitreous china ware as the enameled surface is more porous and cannot be made as hard as the glaze applied to earthenware. For this reason it is considerably more difficult to keep clean, requiring constant cleansing after use.

Manufacturing as we do both earthenware and enameled iron fixtures of which, by the way we are the oldest makers, it is not our object to condemn the use of enameled iron in connection with sanitary fixtures, but to point out its relative value as compared with earthenware.

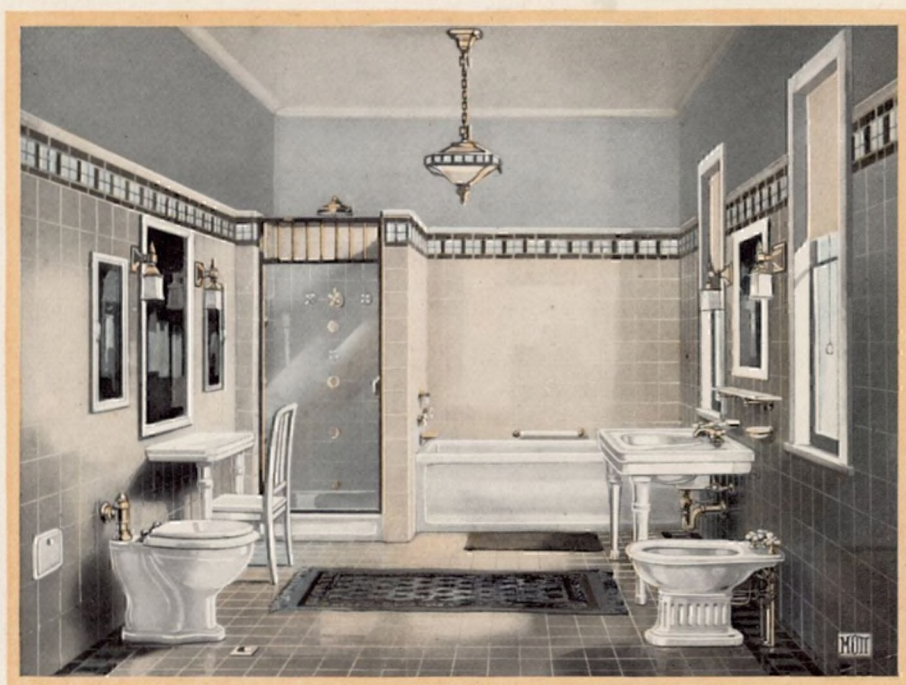
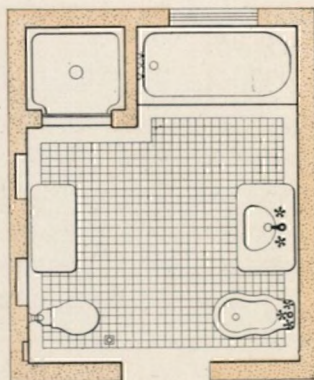


Plate 1095-A, BATHROOM "RAYNOR"

THIS bathroom provides for a shower compartment enclosed by a tile partition and a plate-glass door. The combination needle and shower bath is equipped with a Thermostatic Mixing Valve insuring water at any desired temperature. The bathtub is set in a recess. The toilet table and lavatory are supported on vitreous china legs.

Tiling—Simplicity is the keynote of the tiling of this room. Six-inch square tiles are used for the main walls, with the new and very attractive "satin-finish," instead of the usual high glaze.

"Faience" tiles, with their artistic semi-glaze finish and with a slight but uniform tint of color, make a very pretty and serviceable floor. Just a little stronger color is introduced into the border of both the floor and wall, selected to harmonize with the color-scheme of the adjoining room.



Minimum size, 11'0" x 9'0"

Plate 1095-A, BATHROOM "RAYNOR"

Bath—The "Prescott" imperial porcelain, glazed outside white, with "Pembroke" supply and waste fittings (concealed waste, n. p. bell supply, 3/4" compression valves with 4-arm china handles, china name-plates and n. p. escutcheons)

Imp. Porc.
Classes A and B
Sizes
5' 0" x 2' 8" x 19"
5' 6" x 2' 8" x 19"
6' 0" x 2' 8" x 19"

Vit. China
Sizes

Note—China escutcheons may be furnished in place of n. p. for "Pembroke" bath fittings.

Note—When ordering, state if fittings are to be at right or left end as you face the bath.

Shower—The "Raynor" combination rose spray and shower bath with n. p. 10 1/2" tubular shower head and arm to wall, nine n. p. 3 1/2" rose sprays with removable faces and adjustable ball joints, control valves for shower, rose sprays and test with 4-arm china handles, china name-plates and n. p. escutcheons, n. p. test nozzle, model B-10 "Leonard" thermostatic mixing valve concealed in wall with metal plate, 4-arm china handle and china name-plate, check valves, loose key stop valves, imperial porcelain receptor, plate-glass door with n. p. frame and handle, n. p. 5" waste strainer with 3" coupling. Receptor

39" x 40"

Note—When ordering shower with plate-glass door, state if door is to be hinged at right or left hand jamb.

Lavatory—The "Valando" with legs and china wall supports, n. p. No. 8 "Primus" compression combination supply and waste with gooseneck spout, 4-arm china handles, china name-plates and n. p. escutcheons, 1 1/2" n. p. half S trap with i. p. size waste to wall.

30" x 24"
33" x 24"
36" x 24"
42" x 24"

30" x 24"
33" x 24"

Note—The No. 6 "Primus" combination (similar in appearance to No. 8 "Primus"), is furnished with imperial porcelain lavatories.

Note—China escutcheon can be furnished for "Primus" combination in place of n. p.

Note—When ordering fittings, specify whether metal or china handles and escutcheons are required.

Toilet Table—The "Victoria", with legs and china wall supports

33" x 18"

Mirror—Beveled plate glass, with 2 3/8" white enameled wood frame.

48" x 27"

Water Closet—The "Silentis" quiet-acting syphon-jet, saddle-hole seat and cover with No. 1 cellu-enamel white finish, with n. p. bar hinge, n. p. push-button flush valve concealed in floor with white metal plate, n. p. flush connection to wall, and the sanitary-perfect screw connection.

Same, with cabinet finish quartered oak or birch-stained mahogany seat and cover with n. p. bar hinge.

The "Silentis" water closet can be furnished with "Boston" vent.
Imperial porcelain floor slab, extra.

Bidet—The "Duval" improved all-porcelain flushing rim, n. p. "Simplo" anti-scalding valve with 4-arm china handle, and china name-plate, n. p. combination compression hot and cold supply to flushing-rim and bidet with 4-arm china handles and china name-plates, n. p. rose spray and jet, n. p. "Reliance" waste and supply pipes to floor with escutcheons.

Imperial porcelain floor slab, extra.

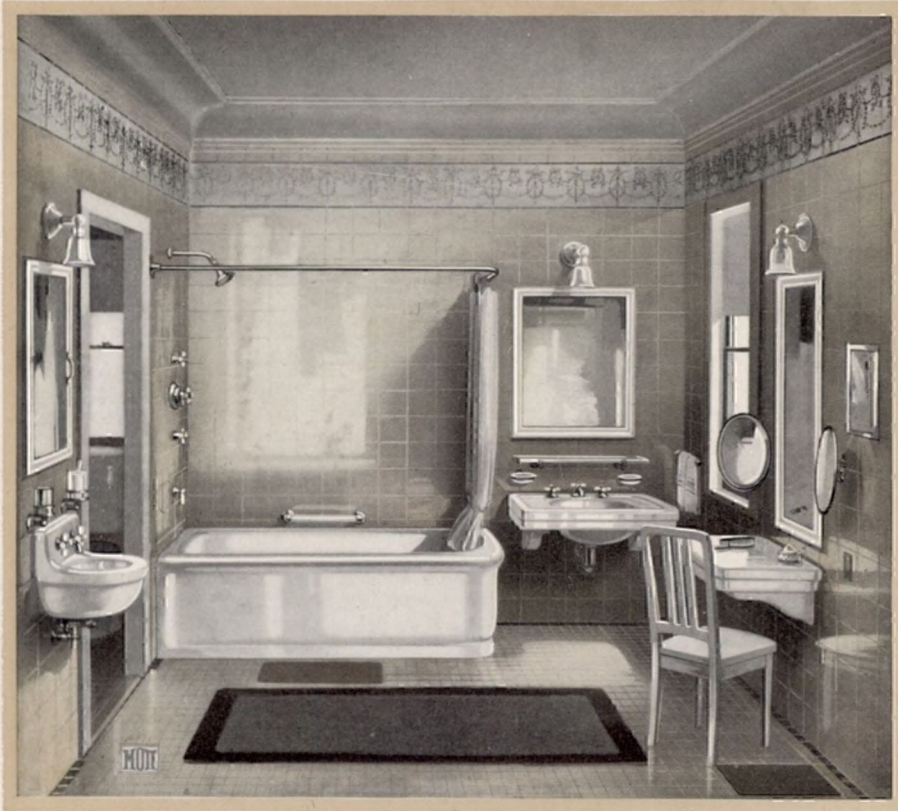


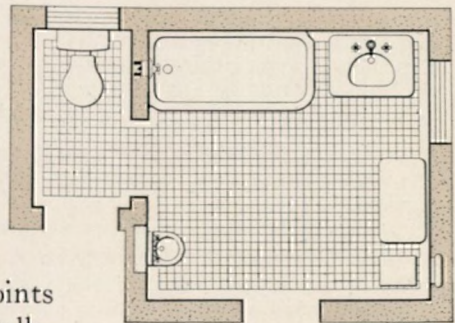
Plate 1098-A, BATHROOM "VOLNEY"

THE outstanding and attractive feature of this bathroom is the arrangement of the lavatory and toilet table supported on heavy iron brackets covered with vitreous china shields. The unobstructed floor space is easily kept clean and will appeal particularly to the house-keeper. The water closet is placed outside of the bathroom, which has its obvious advantages where provision for only one bathroom is made.

The imperial porcelain bath is of the built-in type, which lends itself to the shower with curtain.

Tiling—The only decoration in this room is in the frieze where a delicate empire design is used in white and gold or in pale green and gold if desired. The balance of the room is perfectly plain except for a single line of color in the floor.

Square tiles set with straight joints are used for both the floor and walls. Glazed or vitreous tiles for the floor being a matter of individual taste.



Minimum size, 12' 0" x 9' 0"

Plate 1098-A, BATHROOM "VOLNEY"

<p>Bath—The "Putnam" imperial porcelain, glazed outside white, with concealed waste with china lever handle and n. p. escutcheon, n. p. bell supply, n. p. 5" rain shower head with adjustable ball joint and arm to wall, n. p. control valves for bath and shower with 4-arm china handles, china name-plates and n. p. escutcheons, "Leonard Junior" thermostatic mixing valve concealed in wall, with metal plate, 4-arm china handle and china name-plate, check valves, loose key stop valves, n. p. curtain rod with sateen curtain and n. p. chain and hook.</p>	Imp. Porc. Classes A and B Sizes	Vit. China Sizes	
		5' 0" x 2' 7" x 17"	
		5' 6" x 2' 7" x 17"	
		6' 0" x 2' 7" x 17"	

Note—China escutcheons can also be furnished for bath fittings instead of n. p.

Note—When ordering, state if fittings are to be at right or left end as you face the bath.

<p>Lavatory—The "Volney" with iron brackets and vitreous china shields, n. p. No. 8 "Primus" compression combination supply and waste with gooseneck spout (4-arm china handles, china name-plates, and n. p. escutcheons), 1½" n. p. half S trap with i. p. size waste to wall.</p>	30" x 24"	30" x 24"
	33" x 24"	33" x 24"
	36" x 24"	

Note—The No. 6 "Primus" combination (similar in appearance to No. 8 "Primus"), is furnished with imperial porcelain lavatories.

Note—China escutcheons may be furnished for "Primus" combination if desired.

<p>Toilet Table—The "Victoria" with iron brackets and vitreous china shields.</p>	33" x 18"
--------------------------------------------------------------------------------------------------	-----------

<p>Medicine Cabinet—Recessed with cellu-enamel white wood frame, enameled iron receiver, plain mirror door and adjustable glass shelves.</p>	21¼" x 15¾"
	27¼" x 21¼"

<p>Mirror—Plain plate glass with 2¾" white enameled wood frame.</p>	30" x 24"
	33" x 24"
	36" x 27"
	48" x 27"

Dental—The "Vega" vitreous china dental lavatory with integral back and flushing-rim, concealed cast-iron wall supports, n. p. combination supply valves and connection to flushing-rim (4-arm china handles, china name-plates and n. p. escutcheons) n. p. nozzle with integral regulator, n. p. waste strainer and connection to wall, 1¼" rough brass half S trap, n. p. ¾" i. p. size supply pipes to wall with loose-key lock shield stop valves, union and escutcheons.

Water Closet—The "Silentis" quiet-acting syphon-jet, saddle-hole seat and cover with No. 1 cellu-enamel white finish with n. p. bar hinge, No. 80 vitreous china tank with concealed top supply and stop valve, china lever handle and the sanitary-perfect screw connection.
 Same, with cabinet finish quartered oak or birch-stained mahogany seat and cover with n. p. bar hinge.
 Imperial porcelain floor slab, extra.

Scale—Bathroom, with dial face concealed in wall and platform countersunk in floor.

Furnishings—See subsequent pages.



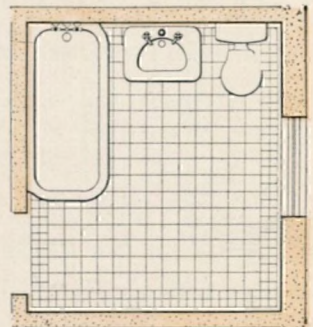
Plate 1106-A, BATHROOM "PALLAS"

THE substantial and beautiful appearance of the fixtures shown in the "Pallas" bathroom are characteristic of all-clay body porcelain—yet the cost is no greater than good quality porcelain enameled ware.

The "Silentum" water closet is exceedingly quiet and effective in operation. The silencing feature is an integral part of the bowl. There is nothing to adjust, nothing to wear out. The "Silentum" will operate quietly every time it is used.

Tiling—Three-inch by six-inch tiles are generally used for the ordinary class of work.

It is surprising how attractive they can be when set on end with straight joints as they are in this room.



Minimum size, 8' 0" x 7' 0"

Plate 1106-A, BATHROOM "PALLAS"

Bath—The "Putnam" imperial porcelain, glazed outside white, with "Pallas" supply and waste fittings (concealed waste, n. p. bell supply, n. p. 5/8" compression valves with 4-arm china handles, china name-plates, n. p. escutcheons), n. p. 5" rain shower with adjustable ball joint and arm to wall, 1/2" combination shower valves with 4-arm china handles and n. p. escutcheons, n. p. curtain rod with sateen curtain and n. p. chain and hook	Imp. Porc. Classes A and B Sizes	Vit. China Sizes
	5' 0" x 2' 7" x 17"	5' 6" x 2' 7" x 17"
	6' 0" x 2' 7" x 17"	

Lavatory—The "Villard" vitreous china with vitreous china pedestal, n. p. "Reliance" waste, n. p. "Trent" low-down compression faucets with 4-arm china handles and china name-plates, 1 1/2" n. p. half S trap with i. p. size waste to wall. "Trent" faucets can be furnished with n. p. handles instead of 4-arm china.

24" x 18"
28" x 20"

Water Closet—The "Silentum" quiet-acting syphon-jet, No. 9 seat and cover, with No. 2 cellul-enamel white finish, n. p. bar hinge, No. 81 vitreous china tank with china lever handle, concealed top supply and stop valve, and No. 8 brass floor flange with china caps.

Same, with No. 9 golden oak or birch-stained mahogany seat and cover, with n. p. bar hinge.

Imperial porcelain floor slab, extra.

In designing the "Silentum" closet we have succeeded in producing the best moderately priced, quiet-acting, syphon-jet closet. In operation, the "Silentum" is exceedingly quiet, yet very effective. Running water cannot be silenced further and still produce a sanitary flush. The "Silentum" closet will compare favorably with any other closet of similar type.

This closet is made with Mott's celebrated non-soil flushing rim. The area of water in the "Silentum" bowl is 13" x 10", while the depth of seal is 3/4".

Furnishings—See subsequent pages.

Brass Work—n. p. indicates nickel-plated brass work.

For separate illustrations of baths, lavatories, and closets, see subsequent pages.

Note—When ordering fittings, specify whether metal or china handles are required.

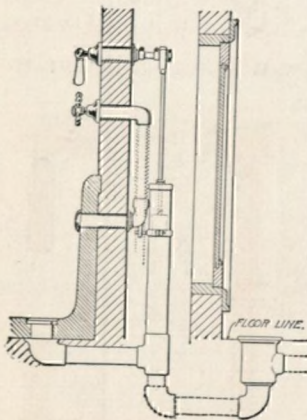


Plate 2756-A—"Pallas" supply and waste fittings with trap below floor. Trap is provided with clean-out which may be in adjoining closet as shown.

The "Pallas" and "Ardsley" supply valves measure 3" from face of wall to center of valves and are tapped for 3/4" i. p.

Note—Piping shown by dotted lines not furnished.

Plate 2756-A



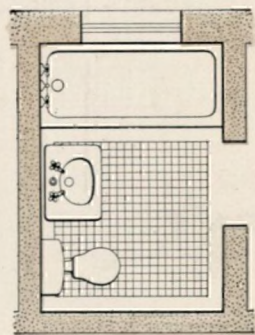
Plate 1110-A, BATHROOM "ECLIPSO"

THE "Eclipso" enameled iron one-piece bath is here shown set across the end of the room—a most desirable arrangement. In fact it is always advisable where possible to plan the width of the room to take the standard length of bath.

The "Villard" vitreous china lavatory is the ideal fixture for the inexpensive bathroom—the pleasing design and large bowl have made it a general favorite for moderate priced homes.

A quiet-acting syphon water closet like the "Silentum" may be installed with the assurance that it will give excellent service. The silencing feature is an integral part of the bowl—the closet will operate quietly every time it is used.

Tiling—A decorative border with a plain white wall and tinted floor are here suggested.



Minimum size, 7' 6" x 5' 6"

Plate 1110-A, BATHROOM "ECLIPSO"

Bath—The "Eclipso" enameled iron one-piece recess bath, enameled inside and outside, with "Pallas" supply and waste fittings (concealed waste, n. p. bell supply, n. p. $\frac{5}{8}$ " compression valves with n. p. 5-ball metal handles, china name-plates and n. p. escutcheons)

Enameled Iron
Sizes
5' 0'' x 2' 6'' x 17''
5' 6'' x 2' 6'' x 17''

Vit. China
Sizes

Can be furnished with 4-arm china handles and china escutcheon instead of n. p.

When ordering, state if fittings are to be at right or left end as you face the bath.

Dimensions—Lengths overall, 5' 0 $\frac{1}{2}$ " and 5' 6 $\frac{1}{2}$ " outside width, 2' 6"; height, 1' 6"; inside depth, 1' 5"; width of front rim, 3"; rim at back and wall ends, 2 $\frac{1}{4}$ ".

Lavatory—The "Villard" vitreous china, with vitreous china pedestal, n.p. "Reliance" waste, n.p. "Trent" low-down compression faucets with n.p. 4-ball metal handles and china name-plates, 1 $\frac{1}{2}$ " n. p. half S trap with i. p. size waste to wall . . .

24'' x 18''
28'' x 20''

Can be furnished with 4-arm china handles in place of n. p.

Mirror—Beveled plate glass with 2 $\frac{3}{8}$ " white enameled wood frame

30'' x 24''

Water Closet—The "Silentum" quiet-acting syphon-jet, No. 9 seat and cover with No. 2 cellu-enameled white finish, n. p. bar hinge, No. 77 vitreous china tank with china lever handle and No. 8 brass floor flange with china caps.

Same, with No. 9 golden oak or birch-stained mahogany seat and cover with n. p. bar hinge.

Furnishings—See subsequent pages.

Brass Work—n. p. indicates nickel-plated brass work.

For separate illustrations of baths, lavatories and closets, see subsequent pages.

Note—When ordering fittings, specify whether metal or china handles and escutcheons are required.

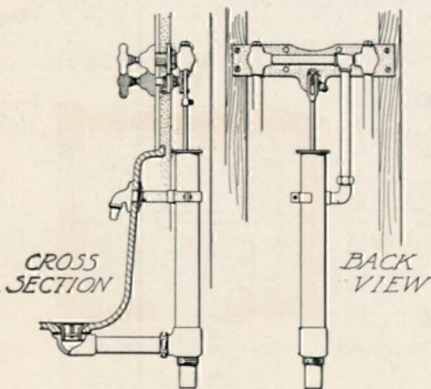


Plate 2759-A

Plate 2759-A—"Paxton" supply and waste fittings with 4-arm solid china handles and china escutcheons, $\frac{1}{2}$ " supplies and 2" stand pipe with 1 $\frac{1}{2}$ " i. p. or lead waste connection, spout with shampoo connection or bell supply to tub.

The valves are by-pass pattern measuring 3" from center to face of wall and may be piped from above or below, the blank end being plugged as shown.

If shower is required, supplies may be carried up directly from the top of valves.

The "Paxton" fittings are made for either solid porcelain or enameled iron baths. They are less expensive than the "Pallas" fittings and especially suitable for $\frac{1}{2}$ " supply work.

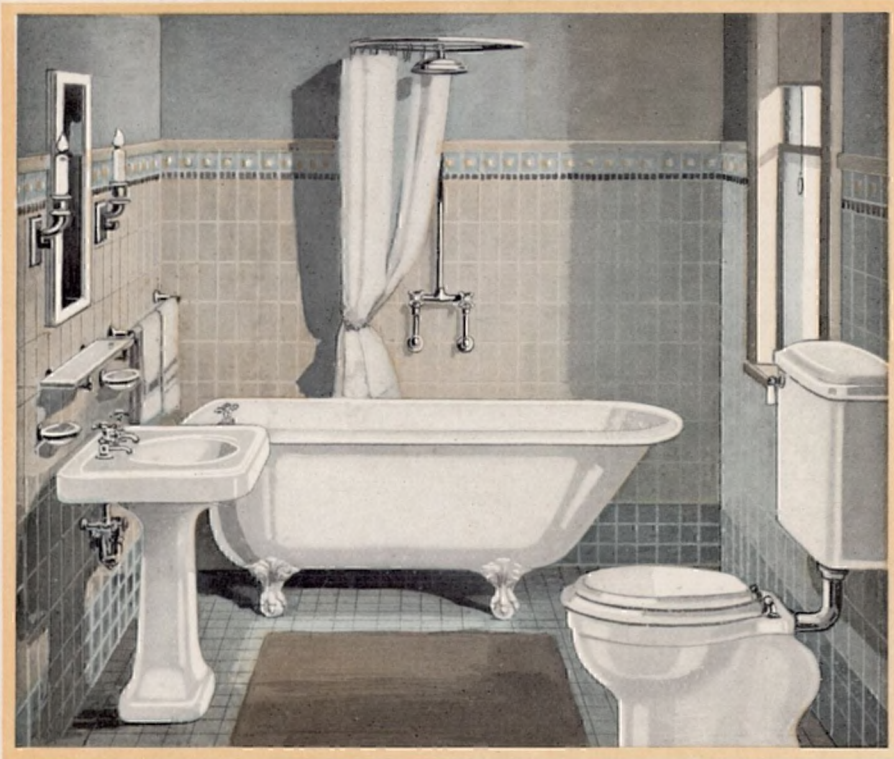
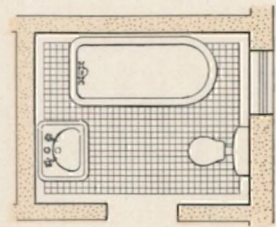


Plate 1117-A, BATHROOM "VILLARD"

THIS interior illustrates a low cost bathroom outfit of unusual value. Mott enameled iron baths are designed with the same care as the higher priced goods, and are guaranteed to give satisfactory service.

The "VILLARD" vitreous china lavatory with Mott-Quality faucets, trap and other brass work, together with the thoroughly tried and reliable "LOMBARD" closet, assure permanent satisfaction.

Tiling—Attention is called to the simple and effective tiling shown in this room. The ordinary 3" x 6" wall tiles are set on end with straight joints giving a distinct character with small expense. The 3" square tinted floor tiles are carried up on the wall three courses forming a base of color, with a line of decoration and color below the cap.



Minimum size,
7' 0" x 5' 6"

Plate 1117-A, BATHROOM "VILLARD"

	Enameled Iron Sizes	Vit. China Sizes
Bath—The "Layton" enameled iron 3" roll-rim, painted one coat outside, with n. p. "Harlem" compression faucet, n. p. "Harlem" 1 3/8" connected waste and overflow, chain and rubber stopper and 1/2" (i. p. size) supply pipes . . .	4' 0" x 2' 6" x 17" 4' 6" x 2' 6" x 17" 5' 0" x 2' 6" x 17" 5' 6" x 2' 6" x 17" 6' 0" x 2' 6" x 17"	

Can be furnished with exterior white enamel painted on front and ends.

Dimensions of "Layton" bath (not including fittings); lengths given above are outside; outside width, 2' 6"; height on feet, 1' 9 1/2"; inside depth, 1' 5"; width of roll-rim, 3".

Shower—The "Harlem" n. p. shower with tubular shower head, curtain ring, white duck curtain, compression valves, check valves and n. p. supply pipes to wall with escutcheons.

Lavatory—The "Villard" vitreous china lavatory with vitreous china pedestal, n. p. "Reliance" waste, n. p. "Trent" low-down compression faucets with china name-plates, and 1 1/2" n. p. half S trap to wall	24" x 18" 28" x 20"
------------------------------------------------------------------------------------------------------------------------------------------------------------------------------------------------------------------------	------------------------

Mirror—Plain plate glass with 1 5/8" white enameled wood frame	24" x 18" 27" x 22"
--------------------------------------------------------------------------	------------------------

Water Closet—The "Lombard" syphon-jet water closet with No. 9 golden oak or birch-stained mahogany seat and cover with n. p. bar hinge, No. 79 vitreous china tank with china lever handle and n. p. tubing supply pipe to floor, and No. 8 brass floor flange with china caps.

Same, with No. 9 seat and cover with No. 2 cellu-enamel white finish and n. p. bar hinge.

Imperial porcelain floor slab, extra.

Furnishings—See subsequent pages.

Brass Work—n. p. indicates nickel-plated brass work.

For separate illustrations of baths, lavatories and closets, see subsequent pages.

BUILT-IN BATHS

WHEN a bath is built into tiled walls and floor it becomes an integral part of the room, affording the obvious advantages of a perfect shower receptor, greater cleanliness and comfort that have made it the most popular type of bath.

The solid porcelain bath glazed inside and outside is, in our opinion, the only kind for this purpose.

Built-in baths of solid porcelain are the most sanitary, durable and serviceable. The hard glazed surface fused integral with the clay body is permanent and will not scratch or discolor; unlike enameled iron, dirt or grease will not hold to its surface.

When the solid porcelain bath is installed it is completely embedded in the cement, as Plate 2728-A, leaving no open spaces around the bath.

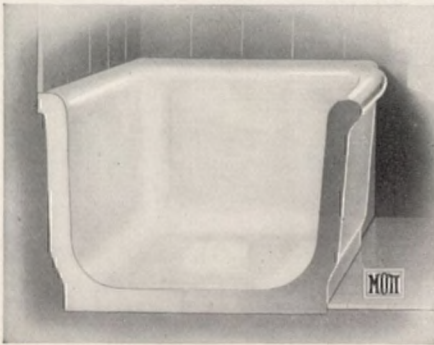


Plate 2728-A. Cross section of light-weight solid porcelain built-in bath

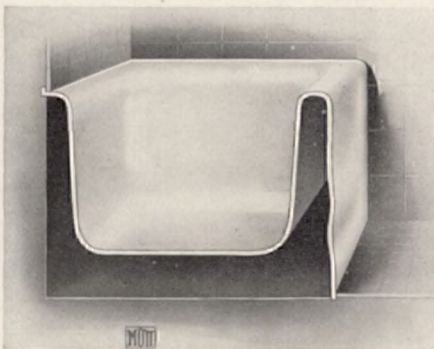


Plate 2729-A. Cross section of an enameled iron built-in bath

The enameled iron built-in bath, see Plate 2729-A, has an open space between the body of the bath and the skirt or apron. This space extends all around as well as under the bath and in time becomes more or less foul, due to dampness, vermin and because the space is unventilated. On this score alone the solid porcelain bath is infinitely more sanitary than the enameled iron.

As manufacturers, we are interested in both solid porcelain and enameled iron, and our desire is to point out what we consider the proper bath to use for building into the tiled walls, and which we know will give the most satisfactory results in every way.



Safety first—THEN COMFORT AND CONVENIENCE

A DEPENDABLE thermostatic mixing device that automatically controls the volume and temperature of water with scientific exactness, and provides a safeguard against scalding or chilling is one of the greatest contributions to bathing comfort and safety of modern times—the “Leonard Junior” shown above embodies all these features, yet it is small, compact and relatively inexpensive.

The “Leonard” thermostatic mixing valve delivers water at any desired temperature and maintains it regardless of change in pressure of the hot and cold supply; thus the possibility of being either chilled or scalded is entirely eliminated.

The above illustration shows a unique arrangement of the “Leonard Junior” valve concealed in the wall, for supplying water to the bath and shower and indicates the absolute security and convenience in bathing children.

See subsequent pages for details regarding the “Leonard” thermostatic mixing valves.



Plate 2731-A

Plate 2731-A—The "Putnam" imperial porcelain bath, glazed outside white, concealed waste with china lever handle and n. p. escutcheon, n. p. bell supply, n. p. 5" rain shower with adjustable ball joint and arm to wall, control valves for bath and shower with 4-arm china handles, china name-plates and n. p. escutcheons, "Leonard Junior" thermostatic mixing valve concealed in wall with n. p. metal plate and handle, check valves, loose key stop valves, n. p. curtain rod with sateen curtain and n. p. chain and hook.

Imp. Porc.
Classes A and B
Sizes

5' 0" x 2' 7" x 17"
5' 6" x 2' 7" x 17"
6' 0" x 2' 7" x 17"

The thermostatic mixing valve in Plate 2731-A, is placed horizontally in wall, the index plate and handle being the only exposed parts. The supplies to the valves are in a recess or closet where they are accessible.

Built-in baths are now the vogue. The light-weight "Putnam" and "Pomona" offer all the advantages of the all-clay body porcelain ware such as permanent lasting qualities, excellence of design, and the glistening hard white surface which is so easily cleaned with a damp cloth. Their light weight makes them available for all classes of work and at a minimum cost of handling and labor. The "Pontiac" "Putnam" and "Pomona" represent the most important achievement in the manufacture of built-in baths, and are most sanitary, durable and serviceable.

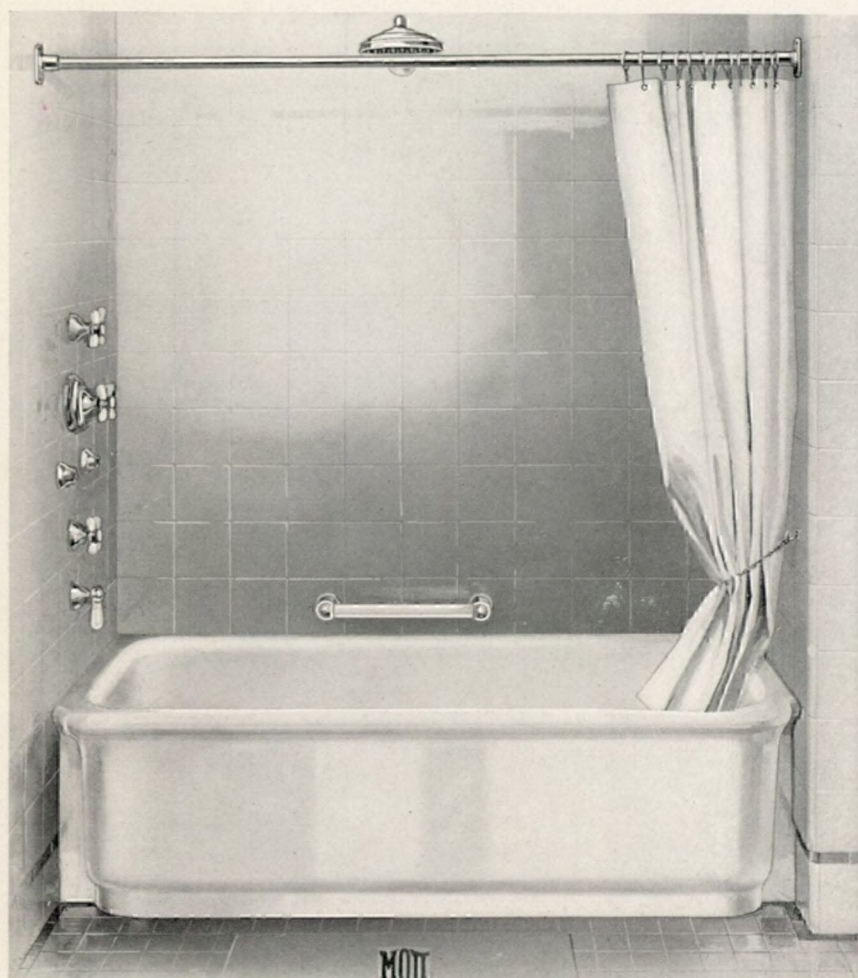


Plate 2732-A

Plate 2732-A—The “Pomona” imperial porcelain bath, glazed outside white, concealed waste with china lever handle and n. p. escutcheon, n. p. bell supply, n. p. 8½” tubular shower head with arm to wall, control valves for bath and shower with 4-arm china handles, china name-plates, and n. p. escutcheons, n. p. “Leonard Junior” thermostatic mixing valve concealed in wall with metal plate and 4-arm china handle, loose key stop valves, n. p. curtain rod with sateen curtain and n. p. chain and hook

Imp. Porc.
Classes A and B
Sizes

5' 0" x 2' 7" x 17"
5' 6" x 2' 7" x 17"
6' 0" x 2' 7" x 17"

Plate 2733-A—The “Pomona,” as above, with n. p. “Ardley” standing waste with brace to wall, n. p. metal handles, china name-plates and n. p. escutcheons on shower and bath valves.

Also furnished with coupling, rubber tube and shampoo with n. p. holder.

Dimensions of “Pomona” Bath—Outside lengths as above; outside width, 2' 7"; inside, 24"; height on base, 1' 7½"; inside depth, 17".

Note—When ordering, state if fittings are to be at right or left end as you face the bath.

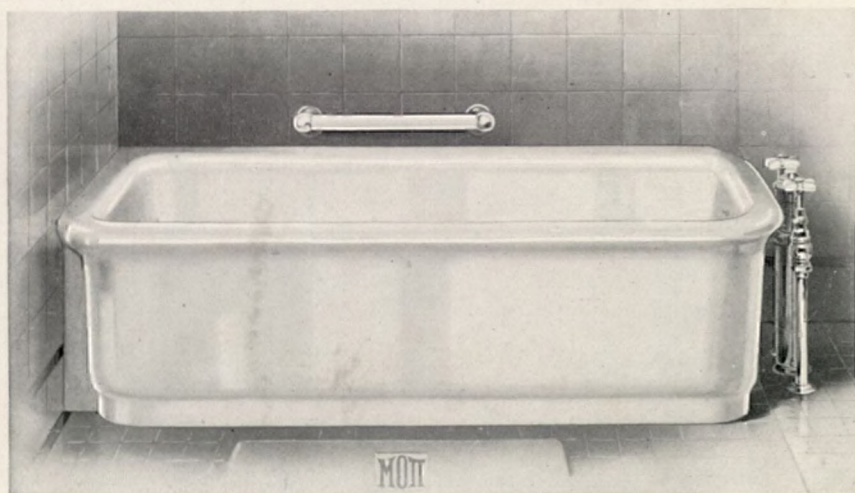


Plate 2738-A

Plate 2738-A—The “Pontiac” imperial porcelain bath, glazed outside white, n. p. “Plymouth” supply and waste fittings with 4-arm china handles and china name-plates .
The “Plymouth” bath fittings are well made. The supply valves and supply pipes are $\frac{3}{4}$ ”.

Imp. Porc.
Classes A and B
Sizes

5' 0" x 2' 7" x 17"
5' 6" x 2' 7" x 17"
6' 0" x 2' 7" x 17"

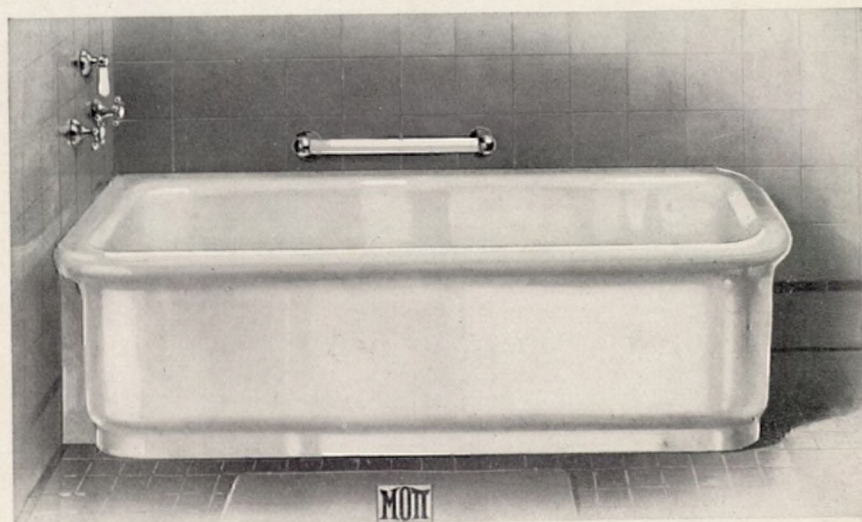


Plate 2739-A

Plate 2739-A—The “Putnam” imperial porcelain bath, glazed outside white, with n. p. “Pallas” supply and waste fittings (concealed waste, n. p. bell supply, n. p. $\frac{5}{8}$ ” compression valves with 5-ball metal handles, china name-plates and n. p. escutcheons)

Imp. Porc.
Classes A and B
Sizes

5' 0" x 2' 7" x 17"
5' 6" x 2' 7" x 17"
6' 0" x 2' 7" x 17"

Can be furnished with 4-arm china handles and china escutcheons on supply valves instead of n. p.

Dimensions of “Pontiac” and “Putnam” Baths—Outside lengths as above; outside width, 2' 7"; inside, 24"; height on base, 1' $7\frac{1}{2}$ "; inside depth, 17".

Note—When ordering, state if fittings are to be at right or left end as you face the bath and specify whether metal or china handles are required.

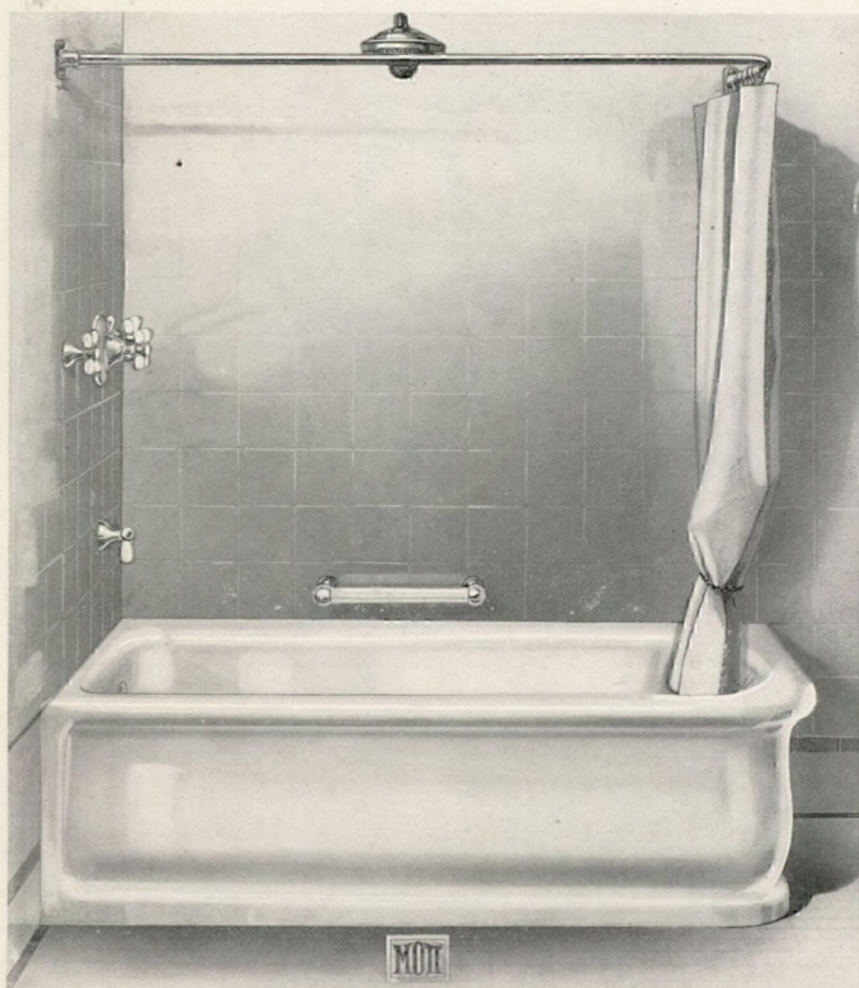


Plate 2742-A

Plate 2742-A—The “Pierpont” imperial porcelain bath, glazed outside white, concealed waste with china lever handle and n. p. escutcheon, n. p. bell supply, n. p. 8½” tubular shower head with arm to wall, control valves for bath and shower with 4-arm china handles, china nameplates, and n. p. escutcheons, model B-10 “Leonard” thermostatic mixing valve, concealed in wall with n. p. metal plate and handle, check valves, loose key stop valves, n. p. curtain rod with sateen curtain, and n. p. chain and hook .

Imp. Porc.
Classes A and B
Sizes

5' 0" x 2' 8" x 19"

5' 6" x 2' 8" x 19"

6' 0" x 2' 8" x 19"

Cellu-enamel hand rail extra.

The “Pierpont”, “Baronial” and “Prescott” are the heavier types of solid imperial porcelain baths and have a depth of 19” inside. These baths have been properly termed “the baths par excellence,” and are installed in many of the finest residences throughout the country. The hard glazed surface fused integral with the clay body is permanent and will not scratch or discolor.

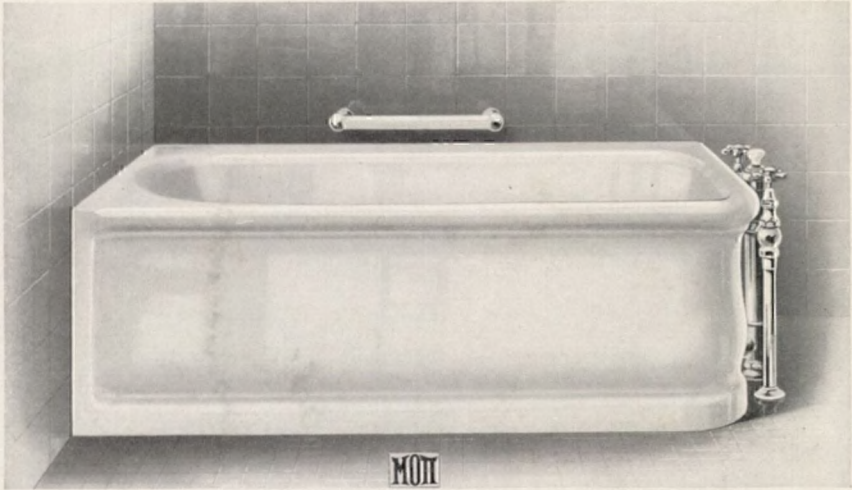


Plate 2743-A

Plate 2743-A—The “Baronial” imperial porcelain bath, glazed outside white, n. p. “Unique” supply and waste fittings with n. p. 5-ball metal handles and china name-plates

Imp. Porc.
Classes A and B
Sizes

5' 0" x 2' 8" x 19"
5' 6" x 2' 8" x 19"
6' 0" x 2' 8" x 19"

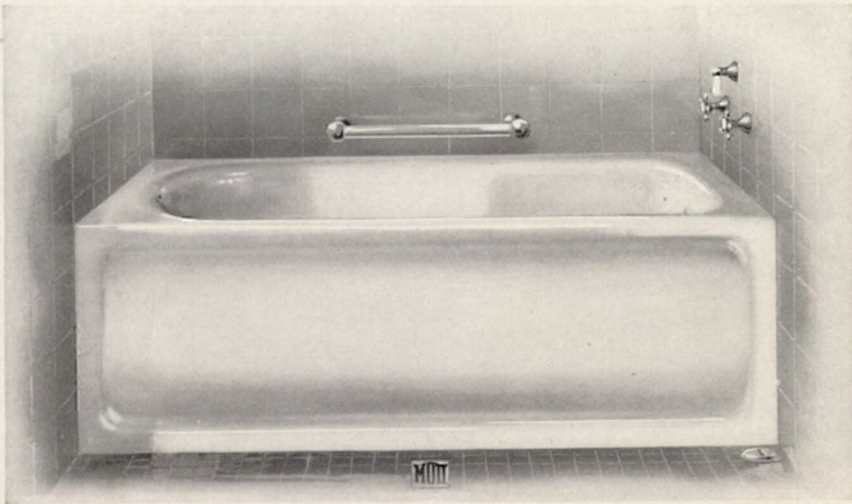


Plate 2744-A

Plate 2744-A—The “Prescott” imperial porcelain bath, glazed outside white, with “Pembroke” supply and waste fittings (concealed waste, n. p. bell supply, 3/4" compression valves with n. p. 5-ball metal handles, china name-plates, n. p. escutcheons)

Imp. Porc.
Classes A and B
Sizes

5' 0" x 2' 8" x 19"
5' 6" x 2' 8" x 19"
6' 0" x 2' 8" x 19"

Dimensions of “Pierpont,” “Prescott” and “Baronial” Baths—Outside lengths as above; outside width, 2' 8"; inside, 24"; height on base, 1' 10"; inside depth, 19".

When ordering, state if fittings are to be at right or left end as you face the bath.

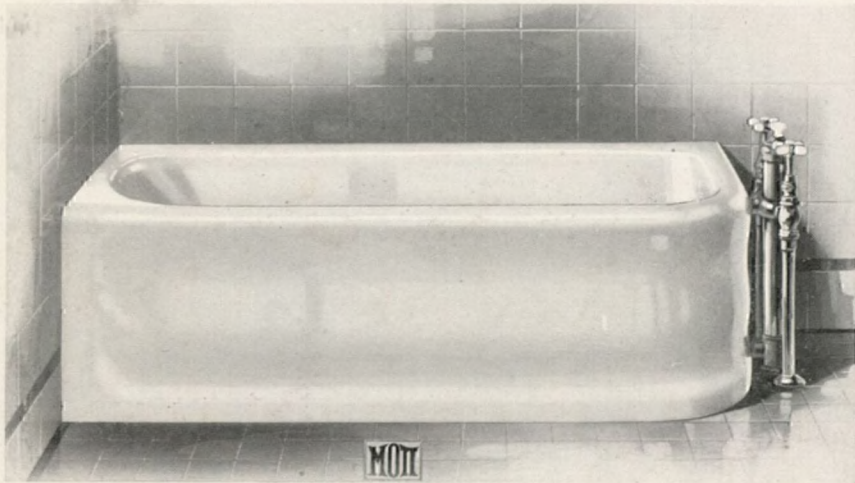


Plate 2749-A

Plate 2749-A—The “Eclipso” enameled iron one-piece corner bath, enameled inside and outside, with n. p. “Bronx” supply and waste fittings with 4-arm china handles and china name-plates

Enameled Iron
Sizes

5' 0" x 2' 6" x 17"
5' 6" x 2' 6" x 17"

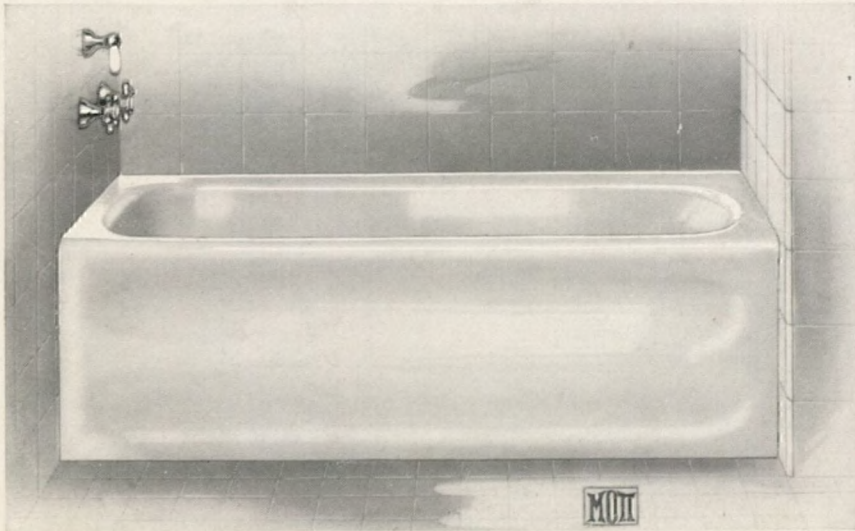


Plate 2753-A

Plate 2753-A—The “Eclipso” enameled iron one-piece recess bath, enameled inside and outside, with n. p. “Pallas” supply and waste fittings (concealed waste, n. p. bell supply, n. p. $\frac{5}{8}$ " compression valves with 5-ball metal handles, china name-plates and n. p. escutcheons)

Enameled Iron
Sizes

5' 0" x 2' 6" x 17"
5' 6" x 2' 6" x 17"

Dimensions—Lengths over all, 5' 0 $\frac{1}{2}$ " and 5' 6 $\frac{1}{2}$ "; outside width, 2' 6"; height, 1' 6"; inside depth, 1' 5"; width of front rim, 3"; rim at back and wall ends, 2 $\frac{1}{4}$ ".

The “Eclipso” is the latest type of built-in enameled iron bath with integral skirt or apron. While it has the appearance of being solid like the imperial porcelain bath, in reality there is an open space which extends all around the body of the bath as well as under the bath. Both the interior and exterior are porcelain enameled.



Plate 2763-A

Plate 2763-A—The "Eutaw" enameled iron, 3" roll-rim bath, painted one coat outside, n. p. "Bronx" supply and waste fittings with n. p. 5-ball metal handles and china name-plates
 Same, with heavy n. p. "Economic" fittings, as Plate 2765-A.

Enameled Iron
 Sizes

5' 0" x 2' 6" x 17"
 5' 6" x 2' 6" x 17"

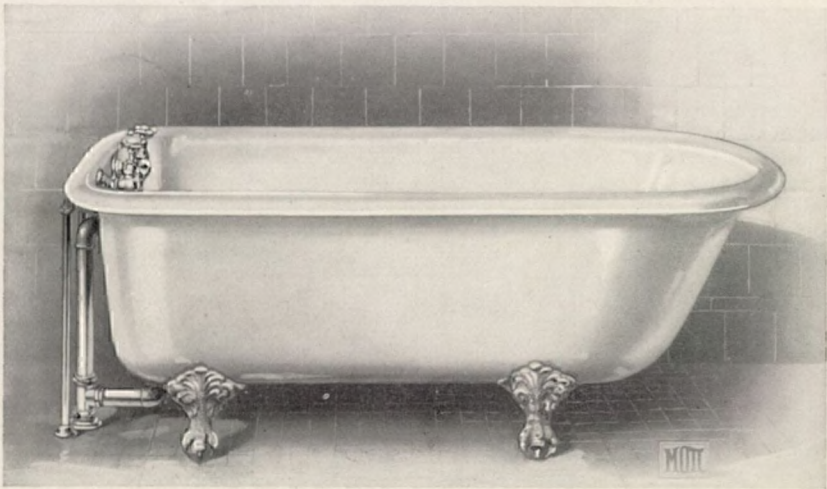


Plate 2764-A

Plate 2764-A—The "Layton" enameled iron, 3" roll-rim bath, painted one coat outside, n. p. "Harlem" compression faucet, n. p. "Harlem" 1 3/8" connected waste and overflow, chain and rubber stopper, and 1/2" (i. p. size) supply pipes

Enameled Iron
 Sizes

4' 0" x 2' 6" x 17"
 4' 6" x 2' 6" x 17"
 5' 0" x 2' 6" x 17"
 5' 6" x 2' 6" x 17"
 6' 0" x 2' 6" x 17"

Plate 2765-A—The "Layton", as above, with heavy n. p. "Economic" compression faucet with stuffing box, and heavy n. p. "Economic" 1 1/2" connected waste and overflow, chain and rubber stopper, and 1/2" (i. p. size) supply pipes.

Dimensions of "Layton" and "Eutaw" Baths (not including fittings)—Lengths given above are outside; outside width, 2' 6"; height on feet, 1' 9 1/2"; inside depth, 1' 5"; width of roll-rim, 3".

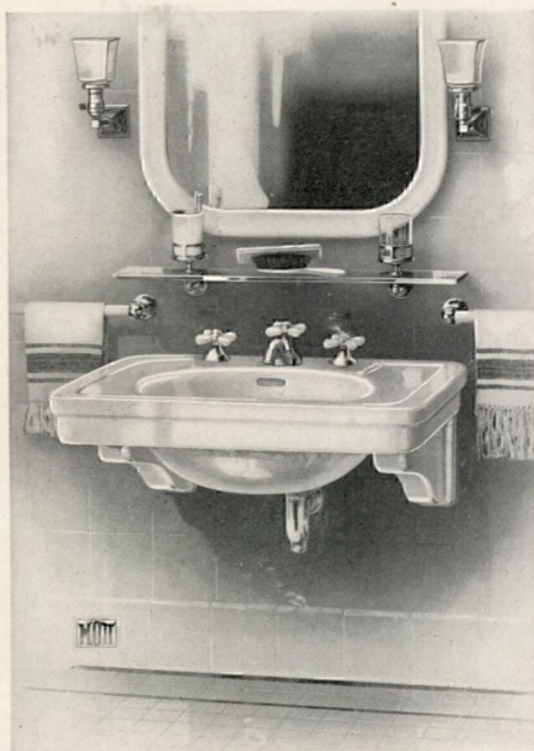


Plate 4205-A—The “Volney” lavatory with iron brackets and vitreous china shields, n. p. No. 8 “Primus” compression combination supply and waste with goose neck spout (4-arm china handles, china name-plates, n. p. escutcheons), Imp. Porc. Vit. and 1½” Classes A and B China Sizes n. p. half S trap with i. 30”x24” 30”x24” p. size waste 33”x24” 33”x24” to wall . . . 36”x24”
 Dimensions—Lengths and widths given above; basin, 18” x 13”.

Note—The No. 6 “Primus” combination (similar in appearance to No. 8 “Primus”) is furnished with imperial porcelain lavatories.

The “Volney” lavatory on brackets will appeal to those who prefer to have the floor free and clear and to do away with pedestals, legs or metal brackets which are difficult to clean. The appearance of the

Plate 4205-A

lavatory as a whole has been carefully considered in designing the brackets which are amply strong and appear to be an integral part of the slab. The brackets in reality are made of heavy cast iron and are covered by vitreous china shields. A tag is sent out with each lavatory giving full instructions so that they may be readily and securely anchored to a wall of any material.

Plate 4206 - A — Imp. Porc. The “Victoria” Classes A and B toilet table with iron brackets and vitreous china shields 33” x 18”
 Sizes

Mirror—Beveled plate glass with 2½” white enameled wood frame, 48” x 27”. Adjustable beveled plate-glass oval mirrors with n. p. frame, back and brackets, 10” x 13”. These mirrors may be extended to the right or left.

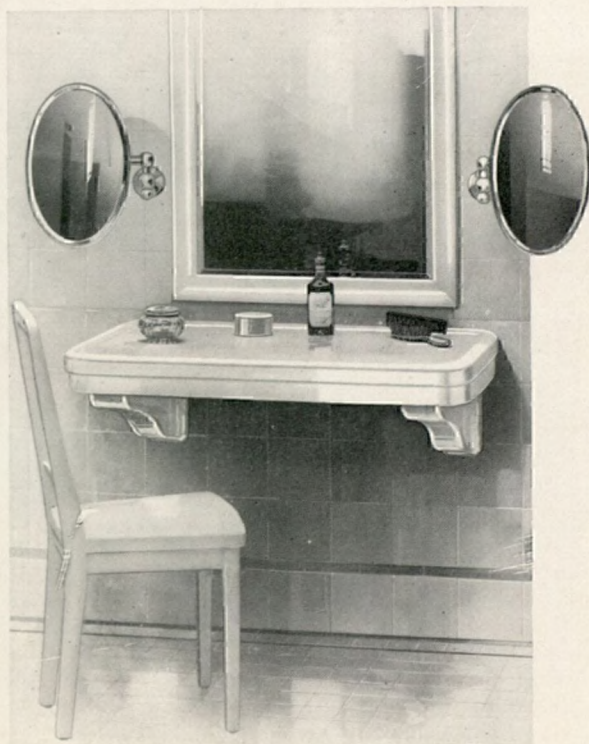


Plate 4206-A



Plate 4209-A—The “Vulcan” lavatory with vitreous china legs and china wall supports, n. p. No. 8 “Primus” compression combination supply and waste with gooseneck spout (4-arm china handles, china name-plates, china escutcheons), n. p. coupling, rubber tube and shampoo with n. p. Imp. Porc. Vit. holder, and Classes A and B China $1\frac{1}{2}$ ” n. p. Sizes China Sizes half S trap 30”x 24” 30”x 24” with i. p. 33”x 24” 33”x 24” size waste 36”x 24” to wall . . . 42”x 24”

Dimensions—Lengths and widths given above; basins, 18” x 13”.

Note—The No. 6 “Primus” combination (similar in appearance to No. 8 “Primus”) is furnished with imperial porcelain lavatories.

Mirror—Beveled plate glass with $2\frac{3}{8}$ ” white 30”x 24” enameled wood 36”x 27” frame 42”x 30”

Plate 4209-A

Plate 4210-A—The “Valcour” lavatory with pedestal, n. p. No. 8 “Primus” compression combination supply and waste (4-arm china handles, china name-plates, n.p. escutcheons), and $1\frac{1}{2}$ ” Imp. Porc. Vit. n. p. half Classes A and B China S trap with Sizes China Sizes i. p. size 30”x 24” 30”x 24” waste to 33”x 24” 33”x 24” wall . . . 36”x 24” Same, with shampoo, as Plate 4209-A.

Dimensions—Lengths and widths given above; basins, 18” x 13”.

Note—China escutcheons may be furnished for “Primus” combination if desired.

Note—When ordering fittings, specify whether metal or china handles and escutcheons are required.

Mirror—Beveled plate glass with $2\frac{3}{8}$ ” white 30”x 24” enameled wood frame 36”x 27”



Plate 4210-A

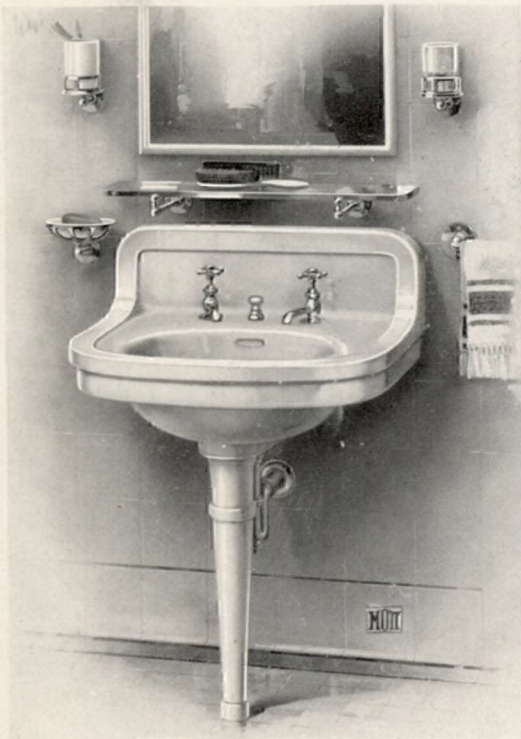


Plate 4212-A

Plate 4212-A—The “Veritas” vitreous china lavatory with integral back and vitreous china standard, n. p. “Reliance” waste, n.p. “Trent” low-down compression faucets with n. p. 4-ball metal handles and china name - plates, and 1½” n. p. half S trap with i. p. size waste to wall

	Sizes
24” x 20”	
27” x 22”	

Dimensions—Lengths and widths given above; 24”, basin 16½” x 11½”, height of back 6½”; 27”, basin 18” x 13”, height of back 8”.

Mirror—Plain plate glass with 1” half - round white enameled wood frame

	Sizes
24” x 18”	
27” x 20”	

Plate 4214-A—The “Veritas” vitreous china lavatory with integral back and concealed hanger, patent overflow, n. p. chain stay, plug and chain, n. p. “Trent” low-down compression faucets with n. p. 4-ball metal handles and china name - plates, and 1½” n. p. half S trap with i. p. size waste to wall

	Size
20” x 18”	

Same, with n. p. “Reliance” waste.

Dimensions—Length and width given above; basin, 14½” x 11”; height of back, 6”. Lavatories without standard, as shown, require a wall of such character that screws will have a firm hold.

Mirror—Plain plate glass with 1” half - round white enameled wood frame

	Sizes
24” x 18”	
27” x 20”	



Plate 4214-A



Plate 4215-A

Plate 4215-A—The “Velasco” vitreous china lavatory with vitreous china pedestal, n. p. No. 9 “Primus” compression combination supply and waste (4-arm china handles, china name-plates, n.p. escutcheons), and $1\frac{1}{2}$ " n.p. half S ^{Sizes} trap with i. p. size 24" x 20" waste to wall . . . 27" x 22" Same, with n. p. 5-ball metal handles.

Can be furnished with fittings, as Plate 4216-A.

Note—China escutcheons may be furnished for “Primus” combination if desired.

Dimensions—Length and width given above; 24", basin $16\frac{1}{2}$ " x 12"; 27", basin 18" x $12\frac{3}{4}$ ".

Mirror—Plain plate ^{Sizes} glass with $1\frac{5}{8}$ " 24" x 18" white enameled 27" x 20" wood frame . . . 30" x 22"

The No. 9 “Primus” combination is a very serviceable fitting. Cold, hot or mixed water can be obtained from a single spout conveniently located in the middle of the slab.

Plate 4216-A—The “Villard” vitreous china lavatory with vitreous china pedestal, n. p. “Reliance” waste, n. p. “Biltmore” low-down compression faucets with 4-arm china handles and china name-plates, and $1\frac{1}{2}$ " ^{Sizes} n. p. half S trap

with i.p. size waste 24" x 18" to wall 28" x 20"

Faucets can be furnished with n. p. 5-ball metal handles.

The “Velasco” and “Villard” vitreous china lavatories are modern in design. Their beauty lies in the clear-cut lines and plain square pedestals. The “Reliance” is a pop-up type of waste. The stopper in basin is operated by lifting the handle of waste.

Dimensions—Lengths and widths given above; 24", basin $16\frac{1}{2}$ " x 12"; 28", basin $16\frac{1}{2}$ " x 12".



Plate 4216-A



Plate 4217-A

Plate 4217-A—The "Valroy" vitreous china lavatory with hooded overflow and integral spout, vitreous china pedestal, n. p. "Reliance" waste with china knob, combination supply valves with 4-arm china handles and china escutcheons, and

	Sizes
1½" half-S trap	
with i.p. size waste	30" x 24"
to wall	33" x 24"

Dimensions—Lengths and widths given above; 30", basin 17¾" x 12½"; 33", basin 18½" x 13½".

The "Valroy" will appeal to those who prefer the absolute minimum of exposed brass work. Water is supplied through an integral spout moulded in the ware.

Plate 4219-A—The "Valroy" vitreous china lavatory with hooded overflow and integral spout, vitreous china standard, china wall supports, n. p. "Reliance" waste with china knob, combination supply valves with 4-arm solid china handles and n. p. escutcheons, and 1½" half-S trap with i.p. size waste to wall

	Sizes
20" x 18"	
24" x 20"	
28" x 22"	

Dimensions—Lengths and widths given above; 20", basin 14" x 10"; 24", basin 16" x 12½"; 28", basin 17¾" x 12½".

Mirror—Plain plate glass with 1⅝" white enameled wood frame . . .

	Sizes
24" x 18"	
27" x 20"	
30" x 22"	

Note—When ordering fittings, specify whether metal or china handles and escutcheons are required.



Plate 4219-A



Plate 4221-A

Plate 4221-A—The “Altoona” vitreous china lavatory supported on “Simple” concealed hanger with china escutcheons and bolts, n. p. “Reliance” waste, n. p. “Trent” low-down compression faucets with n. p. 4-ball metal handles and china name-plates, and 1½” n.p. half S trap with i.p. size waste to wall . . . 24” x 20”

Plate 4221-A illustrates the “Altoona” vitreous china lavatory supported by the “Simple” concealed cast-iron hanger. This hanger provides a most ingenious and effective support for a lavatory. It can be used on the face of a brick or cement wall, or may be concealed in wall.

The “Simple” hanger, consists of a cast-iron tee with three bolts. The upper bolts permit a horizontal adjustment and are fastened to the back apron of the lavatory. The lower bolt is somewhat larger and projects against the overflow box of the lavatory. When the hanger is concealed in the wall, the top bolts are covered with china escutcheons.

Plate 4222-A—The “Altoona” vitreous china lavatory with vitreous china standard and china wall supports n. p. “Reliance” waste, n. p. “Acme” self-closing push-button faucets with china name-plates, and 1½” n. p. half S trap with i.p. size waste to wall 24” x 20”
27” x 22”

Same, with n. p. “Biltmore” faucets, (n. p. 5-ball metal handles and china name-plates).

Dimensions—Lengths and widths given above; 24”, basin 16½” x 12”; 27”, basin 18” x 12¾”.

The “Acme” is a slow, self-closing type of faucet, and can be set so as to give considerable flow of water after the hand has been removed from the push-button, thus allowing a person to wash with running water.



Plate 4222-A



Plate 4223-A

Plate 4223-A—The "Vermont" vitreous china corner lavatory with integral back, vitreous china standard and painted iron wall supports, n.p. "Reliance" waste, n.p. "Trent" low-down compression faucets with n. p. 4-ball metal handles and china name-plates, and 1½" n. p. half S trap, with i. p. size waste to wall.

Same, with n. p. chain stay, plug and chain.

Dimensions—Length on sides, 19"; projection, 26"; basin, 14" x 11½"; height of back, 5"

The "Reliance" is a pop-up type of waste. The stopper in basin is operated by lifting the handle of waste.

Plate 4224-A—The "Vassar" vitreous china corner lavatory with integral back, patent overflow, iron wall support, n. p. chain stay, plug and chain, n. p. "Trent" low-down compression faucets with n. p. 4-ball metal handles and china name-plates, and 1½" n. p. half S trap with i. p. size waste to wall.

Dimensions—Length on sides, 16½"; projection, 22"; basin, 13½" x 11½"; height of back, 5".

Corner medicine cabinet, oak (varnish finish), with plain plate-glass mirror door and two shelves . . . Size 19" x 24"
Same, polish finish.

Same, white enameled.

Also furnished with glass shelves instead of wood.

Mott's vitreous china lavatories are of the highest quality, and are of a beautiful white china color.



Plate 4224-A



Plate 4228-A

Plate 4228-A—The "Bromley" enameled iron lavatory with integral back and apron, patent overflow, depressed soap dish, n. p. "Utility" waste, n. p. "Lalor" low-down compression faucets with china name-plates, $1\frac{1}{2}$ " n. p. half S trap to wall and Simplex hanger

	Sizes
	24" x 18"
	27" x 22"

Same, with n. p. plug and chain, as Plate 4230-A.

Dimensions—Length 24"; width 18"; basin, 15" x 12"; height of back, 10"; apron, 5". Length, 27"; width, 22"; basin, 17" x 12"; height of back, 12"; apron, 5".

Plate 4229-A—The "Barclay" (not illustrated) enameled iron round front lavatory with integral back and apron, patent overflow, depressed soap dish, n. p. plug and chain, n. p. "Lalor" low-down compression faucets with china name-plates, $1\frac{1}{2}$ " half S trap to wall and Simplex hanger

	Sizes
	19" x 16"
	21" x 18"

Dimensions of "Barclay"—Length, 19"; width, 16"; basin, 14" x 11"; height of back, 6"; apron, 5". Length, 21"; width, 18"; basin, 15" x 11"; height of back, 8"; apron, 5".

Plate 4230-A—The "Balfour" enameled iron corner lavatory with integral back and apron, patent overflow, depressed soap dish, n. p. plug and chain, n. p. "Lalor" low-down compression faucets with china name-plates, $1\frac{1}{2}$ " n. p. half S trap to wall and Simplex hanger

	Size
	16 $\frac{1}{2}$ "
	19"

Dimensions—Length of side, 16 $\frac{1}{2}$ "; projection from corner, 24"; basin, 14" x 11"; height of back, 6 $\frac{1}{2}$ "; apron, 4 $\frac{1}{2}$ ". Length of side, 19"; projection from corner, 24"; basin, 15" x 11"; height of back, 8"; apron, 5".



Plate 4230-A



Plate 3230-A

Plate 3230-A—The “Raynor” combination rose spray and shower bath with n. p. 10½” tubular shower head and arm to wall, n. p. 3½” rose sprays with removable faces and adjustable ball joints, control valves for shower, rose sprays and test with 4-arm china handles, china name-plates and n. p. escutcheons, n. p. test nozzle, model B-10 “Leonard” thermostatic mixing valve concealed in wall with metal plate, 4-arm china handle and china name-plate, check valves, loose key stop valves, imperial porcelain receptor, plate-glass door with n. p. frame and handle, n. p. 5” waste strainer with 3” coupling 39” x 40”
 Same with n. p. curtain rod and sateen curtain.
 Same with n. p. model B-10 “Leonard” thermostatic mixing valve, as Plate 3231-A.

Receptor
Classes A and B



Plate 3231-A

Plate 3232-A—The “Raynor,” as above, with n. p. 10½” tubular shower head and arm to wall, (no rose sprays) “Leonard Junior” thermostatic mixing valve concealed in wall with metal plate, 4-arm china handle and china name-plates, loose key stop valves, imperial porcelain receptor, n. p. curtain rod and sateen curtain and n. p. 5” waste strainer and 3” coupling 36” x 37”
 To obtain proper results with rose spray shower, as Plate 3230-A, the water pressure should be at least thirty-five pounds and the supply pipes amply large.

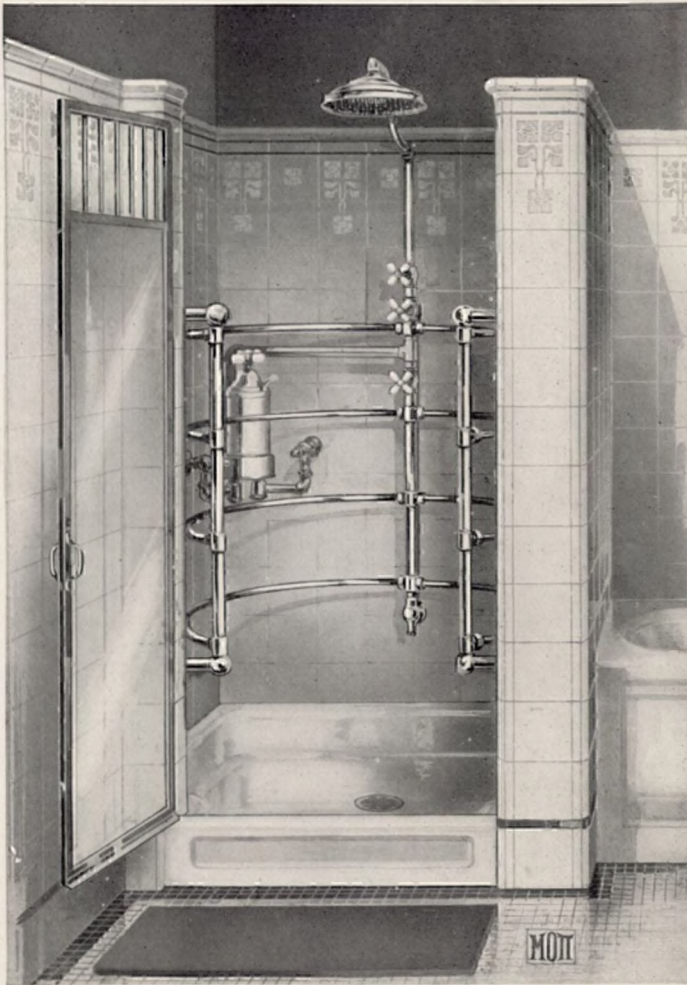


Plate 3234-A

Plate 3234-A—The “Regent” n. p. combination needle and shower bath with n. p. 10½” tubular shower head, n. p. control valves for shower, test and needle with 4-arm china handles and china name-plates, n. p. test nozzle, n. p. model B-40 “Leonard” thermostatic mixing valve with 4-arm china handle and china name-plate, check valves, n. p. loose key stop valve and supplies to wall, n. p. soap dish, imperial porcelain receptor, plate-glass door with n. p. frame and handle, and n. p. 5” waste strainer with 3” coupling Receptor
Imp. Porc.
Classes A and B
39” x 40”

Same, with n. p. curtain rod and sateen curtain.

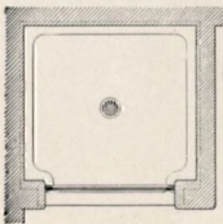


Plate 3225-A

Dimensions of Receptor—Outside, from right to left, 39”; front to back, 40”; height, from bottom of receptor to top edge, about 8”; depth inside, 6”; size of door, 5’ 11½” high and 2’ 3” wide.

To obtain proper results with needle baths, the water pressure should be at least twenty pounds and the supply pipes amply large.

When ordering shower with plate-glass door, state if door is to be hinged at right or left-hand jamb.



Plate 3237-A

Plate 3237-A—The "Leonard" thermostatic mixing valve concealed in wall with metal plate and 4-arm china handle. Same, with check valves.

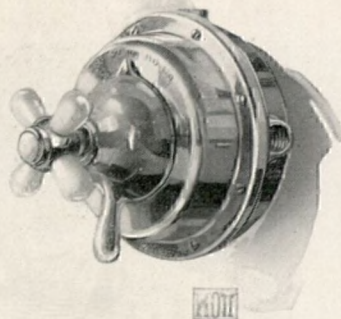


Plate 3238-A

Plate 3238-A—The "Leonard" thermostatic mixing valve on face of wall with 4-arm china handles. Same, with check valves.

THERMOSTATIC AND ANTI-SCALDING VALVES

THE "Leonard" valve is undoubtedly the most perfect mixing device ever invented. It is thermostatic in action and automatically maintains the temperature regardless of fluctuations in pressure.

Absolute safety and comfort are assured in the fact that this valve will automatically close on both the hot and cold water should either one of them be inadvertently shut off.

The "Leonard Junior" embodies all of the features of the larger valve, the only difference being in the volume of water supplied. It is particularly adapted for small showers, bath tubs, bidets, etc., and will deliver nine gallons of water per minute under normal pressure. Wherever the "Leonard Junior" valve is to be used with more than one outlet, check valves are necessary.

The "Simplo" valve differs from other anti-scalding valves of the compression type in that it has a unique device in the form of a shutter which permits of very accurate regulation.

The "Simplo" valve is especially adapted for building into the wall but it is also made to set against the face of the wall. In both cases the working parts are removable from the front. Regulating valves are necessary for the proper installation of the "Simplo".

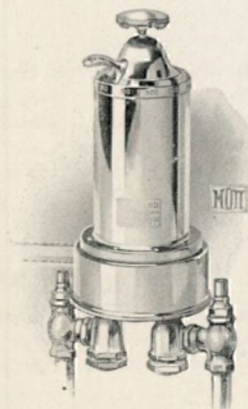


Plate 3239-A

Plate 3239-A—The "Leonard" thermostatic mixing valve with wheel handle, index pointer and check valve, models B-10, B-20 and B-40.

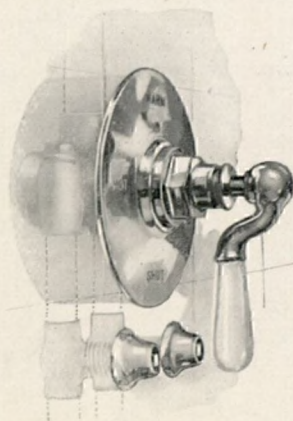


Plate 3240-A

Plate 3240-A—The "Simplo" anti-scalding valve concealed in wall with metal plate and china lever handle. Same, to set on face of wall.



Plate 5324-A

Plate 5324-A—The “Silentis” quiet - acting syphon - jet water closet with “Boston” vent and china escutcheon, saddle-hole seat and cover with No. 1 cellu-enamel white finish and n. p. bar hinge, No. 80 vitreous china tank with concealed top supply and stop valve, china lever handle and the sanitary-perfect screw connection. Same, with cabinet finish quartered oak or birch-stained mahogany seat and cover with n. p. bar hinge.

Plate 5325-A—The “Silentis” quiet - acting syphon - jet water-closet, no vent, saddle-hole seat and cover with No. 1 cellu-enamel white finish and n. p. bar hinge, No. 80 vitreous china tank with concealed top supply and stop valve, china lever handle and the sanitary-perfect screw connection. Same, with cabinet finish quartered oak or birch-stained mahogany seat and cover with n. p. bar hinge.

Plate 5326-A—The “Langham” syphon-jet water closet, with n. p. push-button pocket flush valve, n. p. loose key lock shield regulating stop valve with n. p. key, saddle-hole seat and cover with No. 1 cellu-enamel white finish and the sanitary-perfect screw connection.

Same, with cabinet finish quartered oak or birch-stained mahogany seat and cover.

Plate 5327-A—The “Langham” as above, with No. 9 brass floor flange and china caps.

Same, with cabinet finish quartered oak or birch-stained mahogany seat and cover.

Imperial porcelain floor slab, extra.



Plate 5326-A



Plate 5329-A

Plate 5329-A—The "Silentum" quiet-acting syphon-jet water closet with n. p. regulator, connection to wall and escutcheon, No. 6 saddle-hole seat and cover with No. 2 cellu-enamel white finish and n. p. bar hinge, push-button flush valve concealed in floor with white metal plate, and No. 8 brass floor flange with china caps.

Same, with No. 6 cabinet finish quartered oak or birch-stained mahogany seat and cover with n. p. bar hinge.

Imperial porcelain floor slab, extra.

It with "Pres-o-flex" brass floor flange, extra.

Plate 5334-A—The "Lombard" side inlet syphon-jet water closet, No. 9 seat and cover with No. 2 cellu-enamel white finish and n. p. bar hinge, n. p. "Oscilla" flush valve with integral stop valve, n.p. supply pipe to floor and No. 8 brass floor flange with china caps.

Same, with No. 9 golden oak or birch-stained mahogany seat and cover with n. p. bar hinge.

Imperial porcelain floor slab, extra.

The "Lombard" is a dependable syphon-jet water closet. This closet represents the best value obtainable, having an unusually large water area of 12" x 10", and deep seal of 3"; it is made with the celebrated Mott non-soil flushing rim.



Plate 5334-A

MOTT MODERN PLUMBING

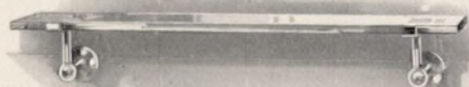


Plate 3851-A

Plate 3851-A—Plate glass shelf with n.p. brackets, with concealed fasteners.

Sizes—5" wide; 1/2" thick; 18", 24", 27", 30", 33", 36", 42" and 48" long.



Plate 3853-A

Plate 3853-A—Plate glass shelf with n.p. brackets, with concealed fasteners.

Sizes—5" wide; 3/8" thick; 18", 24", 27", 30", 33" and 36" long.

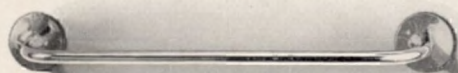


Plate 3856-A

Plate 3856-A—Brass towel bar, n.p.

Sizes—Regular 3/8" tubing, 18" and 24" long; extra-heavy pipe size tubing, 18", 24", 30", 36", 48" and 60" long.

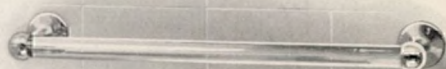


Plate 3857-A

Plate 3857-A—Glass towel bar with n.p. standards with concealed fasteners.

Sizes—Crystal, 1" diameter, 18", 24", 30" and 36" long; 1 1/2" diameter, 36", 42", 54" and 60" long; opaloid, 1" diameter, 18", 24", 30" and 36" long.

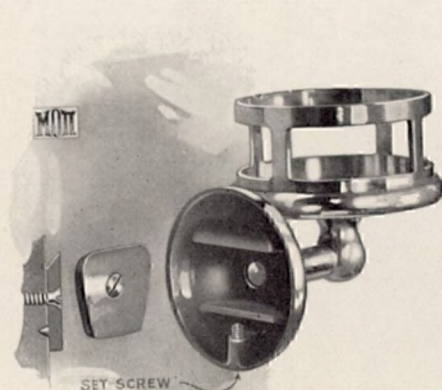


Plate 3862-A

Plate 3862-A—Illustrates the concealed fastening device. It is the most ingenious device of its kind on the market. It is easily set in place, forms a rigid support and does away with unsightly screws.



Plate 3869-A

Plate 3869-A—China soap dish with n.p. holder, with concealed fastener.

Plate 3870-A—Large china soap dish with n. p. holder, with concealed fastener.



Plate 3871-A

Plate 3871-A—China soap dish with n.p. holder, with concealed fastener.

MOTT MODERN PLUMBING

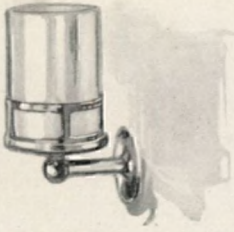


Plate 3863-A—Holder, n. p., with concealed fastener and china tooth-brush vase.

Plate 3864-A—Holder, n. p., with concealed fastener and cut glass tumbler.

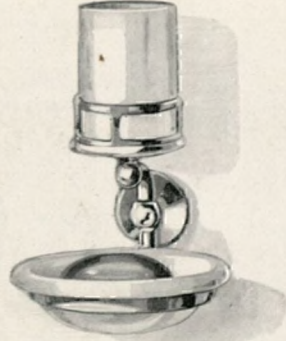


Plate 3866-A—Combination holder, n. p. with concealed fastener, china soap dish and tooth-brush vase.



Plate 3868-A—Combination holder, n. p., with concealed fastener, china tooth-brush vase and cut glass tumbler.

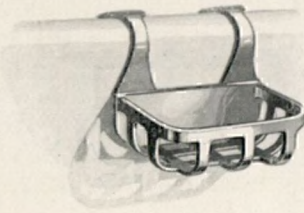


Plate 3898-A—Soap dish for rim of bath, n. p., 5'' x 3 1/2''. Same, 7 1/2'' x 4 1/2''.



Plate 3875-A—Recessed tile soap dish, 6'' x 6''.

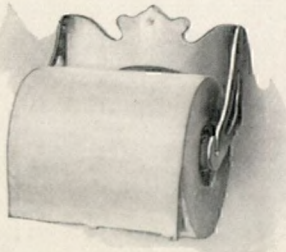


Plate 3886-A—Paper holder, n. p., for roll paper 5'' x 4''.



Plate 3879-A—Cellu-enamel wood recessed paper cabinet with cellu-enamel metal receiver, for sheets 7'' x 5''.

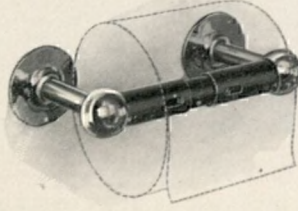


Plate 3884-A—Paper holder with n. p. standard sand concealed fasteners, for roll paper.

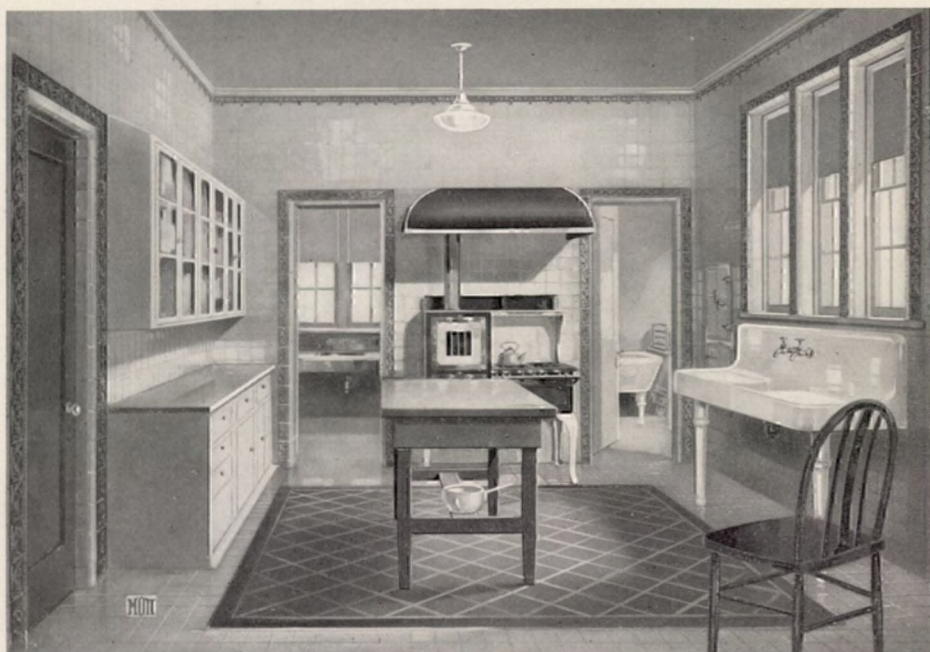


Plate 7125-A, MODERN KITCHEN

THE modern and well-appointed kitchen has become an important part of the house, and worthy of much study and careful planning.

While it is impossible to show a complete kitchen in one illustration, or to include in it all of the plumbing equipment and various appointments, such as the scullery sink, vegetable sink, dish washer, incinerator, etc., we have endeavored to show in a general way a good arrangement of a kitchen for a residence of moderate cost.

Attention is called particularly to the "Burnside" sink which is illustrated separately on page 45. It will be noted that the sink is set about 36" high, which has been found to be most convenient, though the legs are adjustable to practically any height desired.

The perplexing problem of the proper type of kitchen floor has been solved in the combination of a "Dreadnaught" field with tile border. "Dreadnaught" is non-absorbent and will not stain and is practically everlasting, besides having a resiliency that makes constant standing or walking easy.

Our designers are at your service in the preparation of special plans of kitchens, laundries and pantries, and our Tile Department will furnish prices for tiling and "Dreadnaught" flooring, with suggestions for attractive color combinations.

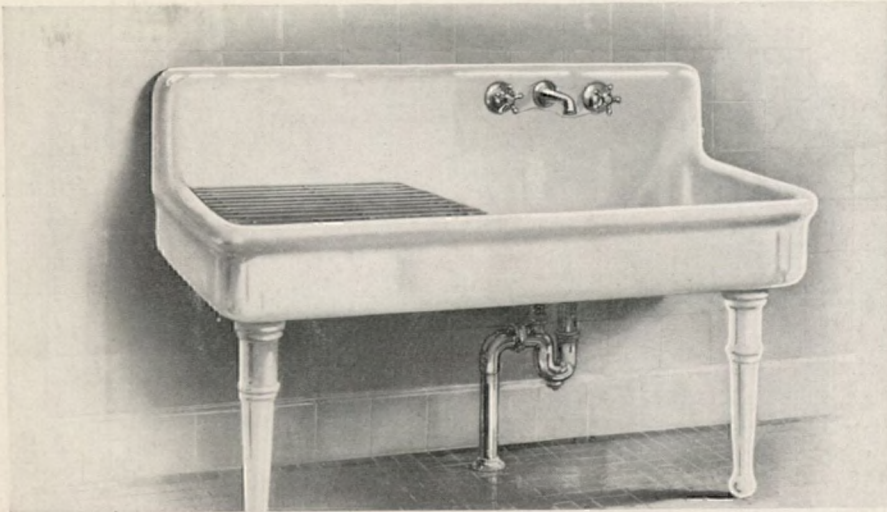


Plate 7128-A

Plate 7128-A—The “Barrington” imperial porcelain roll-rim kitchen sink with integral back and drain board, imperial porcelain legs, n. p. No. 4 “Belknap” $\frac{3}{4}$ ” combination compression faucet (n. p. 5-ball metal handles with china name-plates), n. p. 2” waste strainer and coupling, and wood mats for sink and drain board

Imp. Porc.
Classes A and B
Size

4' 5" x 2' 2"

Full S n. p. 2” trap with i. p. size waste to floor and vent to wall, extra.

N. p. $\frac{3}{4}$ ” supply pipes with offsets and unions, extra.

Dimensions—Length and width outside given as above; sink inside 28” x 20” x 7” deep; drain board, 20”; height of back, 9”. “Belknap” faucet, 8” centers.

Note: The “Barrington” sink is made only with drain board at left.

Plate 7145-A—The “Dover” imperial porcelain roll-rim pantry sink with integral back and straight dividing partition, imperial porcelain legs, n. p. $1\frac{1}{2}$ ” “Simplex” standing wastes and overflows, wood mats, n. p. combination compression supply valve (n. p. 5-ball metal handles with china name-plates) with swinging nozzle, n. p. twin waste connection and 2” half S trap with i. p. size waste to wall

Imp. Porc.
Classes A and B
Size

42" x 26"



Plate 7145-A

The above valve can be furnished with shut-off so that while delivery of water is obtained on either side of the center partition it is automatically shut off as the gooseneck is swung over the partition. When this valve is used the supply pipes should be furnished with accessible check valves.

Unless check valves are used and located at some convenient point there is danger of the hot and cold water mixing. The check valves are not furnished by us.

Dimensions—Length and width given above; sinks inside, $17\frac{1}{2}$ ” x 20” x 7” deep; height of back, 9”.

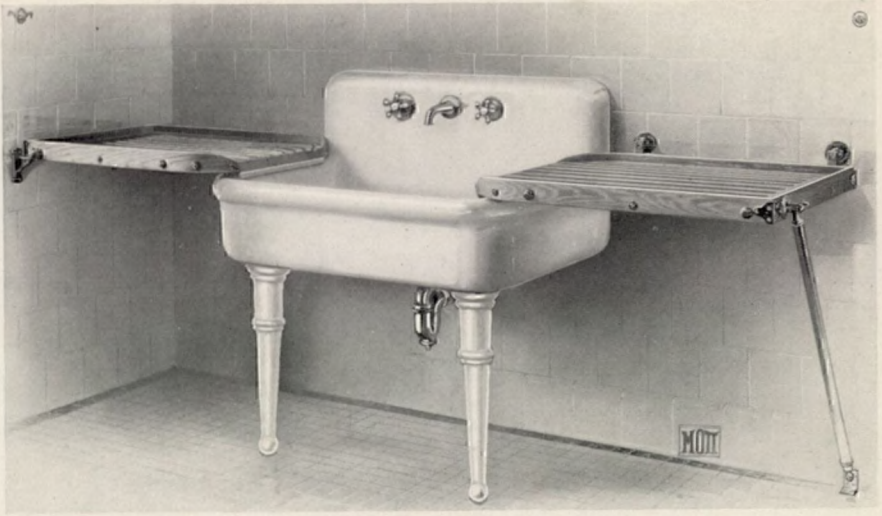


Plate 7130-A

Plate 7130-A—The “Rocona” imperial porcelain roll-rim kitchen sink with integral back, imperial porcelain legs, n. p. No. 4 “Belknap” $\frac{3}{4}$ ” combination compression faucet (n. p. 5-ball metal handles with china name-plates), n. p. 2” waste strainer and coupling, and wood mat.

Can be furnished with bronzed or painted iron legs.

Can be furnished with n. p. $\frac{3}{4}$ ” compression faucets instead of “Belknap.”

N. p. 2” half S trap with i. p. size waste to wall, extra.

Ash drain board for corner, 30” long, with n. p. end hinges.

Ash drain board for end, 30” long, with n. p. back hinges and telescopic leg.

Dimensions of sinks are outside, except depth, which is inside; back, 9”.

Imp. Porc.
Classes A and B

Imp. Porc.
Classes A and B

24” x 22” x 7”

30” x 22” x 7”

24” x 26” x 7”

30” x 26” x 7”

27” x 22” x 7”

36” x 26” x 7”

27” x 26” x 7”

42” x 26” x 7”

Plate 7131-A—“Tucker” grease trap. Size 1. Painted cast iron. Height, 17”; diameter, 12 $\frac{3}{4}$ ”; inlet and waste couplings, 2”; inlet and outlet to chilling chamber, 1 $\frac{1}{4}$ ”. Same, enameled inside.

Size 2. Painted cast iron. Height, 18 $\frac{1}{4}$ ”; diameter, 17 $\frac{3}{4}$ ”; inlet and waste couplings, 2”; inlet and outlet to chilling chamber, 1 $\frac{1}{4}$ ”. Same, enameled inside.

Size 3. Painted cast iron. Height, 22”; diameter, 23 $\frac{3}{8}$ ”; inlet and waste couplings, 3”; inlet and outlet to chilling chamber, 2”.

Size 4. Brass, n. p. Height, 17 $\frac{1}{2}$ ”; diameter, 11 $\frac{1}{2}$ ”; inlet and waste couplings, 2”; inlet and outlet to chilling chamber, 1 $\frac{1}{4}$ ”.

Size 1 and Size 4 are adapted for residences; Size 2 for large private residences, etc.; Size 3 for hotels, restaurants, etc.

The dimensions of traps as given above are outside.

The “Tucker” grease trap is composed of an inner chamber into which the waste water and grease passes, and an outer chamber through which the cold water supply for the house flows.

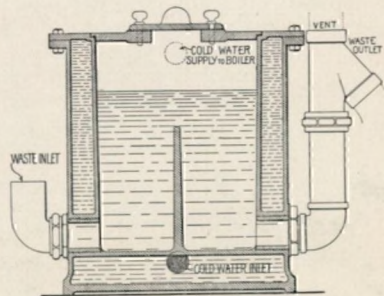


Plate 7131-A

“Tucker” Grease Trap

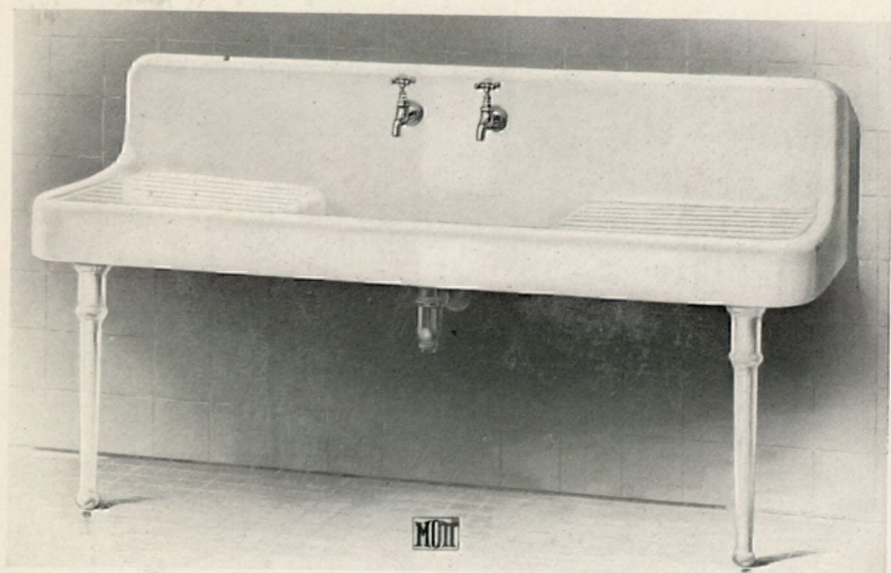


Plate 7136-A

Plate 7136-A—The “Burnside” enameled iron kitchen sink with integral apron, right and left drain boards and back, concealed wall hanger, adjustable enameled iron legs, n. p. waste strainer and coupling, n. p. “Harlem” $\frac{5}{8}$ ” compression faucets with china name-plates, and n. p. $1\frac{1}{2}$ ” half S trap with iron pipe size waste to wall, and three wood mats for drain boards and sink, as Plate 7138-A. . .

Sizes

6' 2" x 20"
6' 6" x 22"

Can be furnished with n. p. “Belknap” $\frac{1}{2}$ ” combination supply faucet with china name-plates, as Plate 7137-A.

Dimensions—Size 1: Length and width, given above; height of back, 12”; sink, 30” x 20”; drain boards, 24” each; apron, $5\frac{1}{2}$ ”. Size 2: Length and width given above; height of back, 12”; sink, 32” x 22”; drain boards, 25”; apron, 6”.



Plate 7137-A



Plate 7138-A

The “Belknap” combination supply faucet is especially adapted for kitchen and pantry sinks having integral backs. Cold, tepid, or hot water may be obtained from the “Belknap” combination compression faucet.



Plate 7139-A

Plate 7139-A—The “Belgrade” enameled iron kitchen sink with integral back, drain board and apron, concealed wall hanger, adjustable enameled iron legs, n. p. waste strainer and coupling, n. p. $\frac{5}{8}$ ” “Harlem” compression faucets (n. p. 4-ball metal handles with china name-plates), n. p. $1\frac{1}{2}$ ” half S trap with i. p. size waste to wall, and two wood mats for sink and drain board as Plate 7138-A

Enameled Iron
Size

4' 4" x 20"

Same, with n. p. “Belknap” combination compression faucet as Plate 7137-A. Dimensions—Length and width as given above; height of back, 12”; sink, 30” x 20”; drain board, 24”; apron, $5\frac{1}{2}$ ”.

Plate 7140-A—The “Belgrade” enameled iron kitchenette sink with integral back, drain board and apron, concealed wall hanger, n. p. waste strainer and coupling, n. p. $\frac{1}{2}$ ” “Harlem” compression faucets (n. p. 4-ball metal handles with china name-plates), n. p. $1\frac{1}{2}$ ” half S trap with i. p. size waste to wall, and two wood mats for sink and drain board as Plate 7138-A.

Enameled Iron
Size

3' $6\frac{1}{2}$ " x 20"

Dimensions—Length and width as given above; height of back, 12”; sink, 24” x 20”; drain board, 20”; apron, $5\frac{1}{2}$ ”.

Note—The “Belgrade” may be furnished with right or left drain board. When ordering, state if sink is desired with left drain board, as shown, or with right drain board.

The “Belgrade” kitchenette sink is well adapted for installation in the ever-increasing number of small apartments, bungalows, etc., and is in keeping with the most approved ideas of modern sanitation.

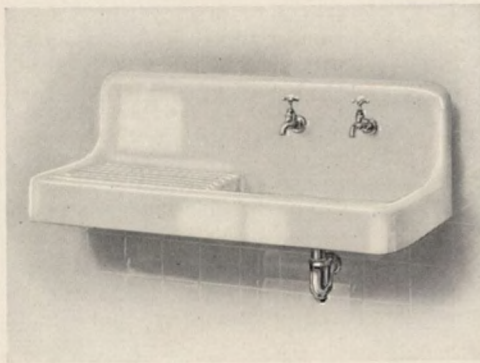


Plate 7140-A

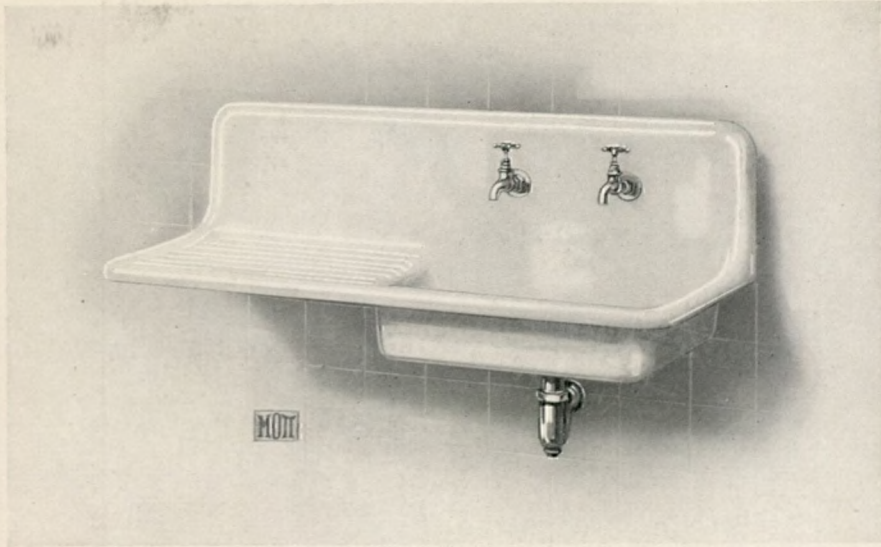


Plate 7141-A

Plate 7141-A—The “Belgrade” enameled iron kitchenette sink with Enameled Iron integral back and drain board, concealed wall hanger, n. p. waste Size strainer and coupling, n. p. $\frac{1}{2}$ ” “Harlem” compression faucets (n. p. 4-ball metal handles with china name-plates), n. p. $1\frac{1}{2}$ ” half S trap with i. p. size waste to wall, and two wood mats for sink and drain board, as Plate 7138-A 3’ $6\frac{1}{2}$ ” x 20”

Dimensions—Length and width as given above; height of back, 12”; sink, 24” x 20”; drain board, 20”.

Note—The “Belgrade” may be furnished with right or left drain board. When ordering state if sink is desired with left drain board, as shown, or with right drain board.

Plate 7142-A—The “Beekman” enameled iron roll-rim kitchen sink with integral back, concealed “Simplex” hanger and n. p. waste strainer

Enameled Iron, Sizes	
24” x 18” x 6”	
24” x 20” x 6”	
30” x 18” x 6”	
30” x 20” x 6”	
36” x 21” x 6”	

Enameled iron drain board with iron bracket, 25” x 18”, 25” x 20”.

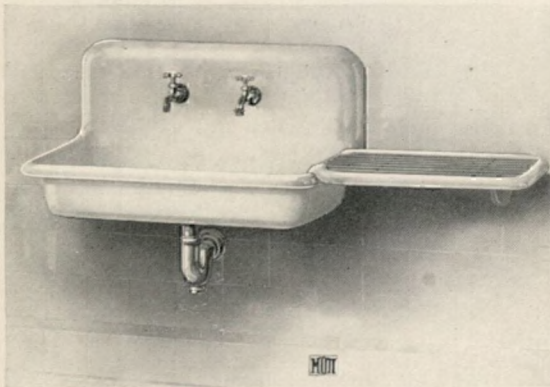


Plate 7142-A

N. p. $\frac{5}{8}$ ” “Harlem” compression sink faucets with china name-plates (cold water faucet with hose end). Galvanized iron $1\frac{1}{2}$ ” and 2” half S traps. N. p. $1\frac{1}{2}$ ” and 2” cast brass half S traps, with i. p. size waste to wall.

Dimensions of sink are outside, except depth, which is inside; back, 12” high.

The durability and hardness of surface of Mott-made enameled iron kitchen sinks are noteworthy. They may be installed with the assurance that they will give the utmost satisfaction.

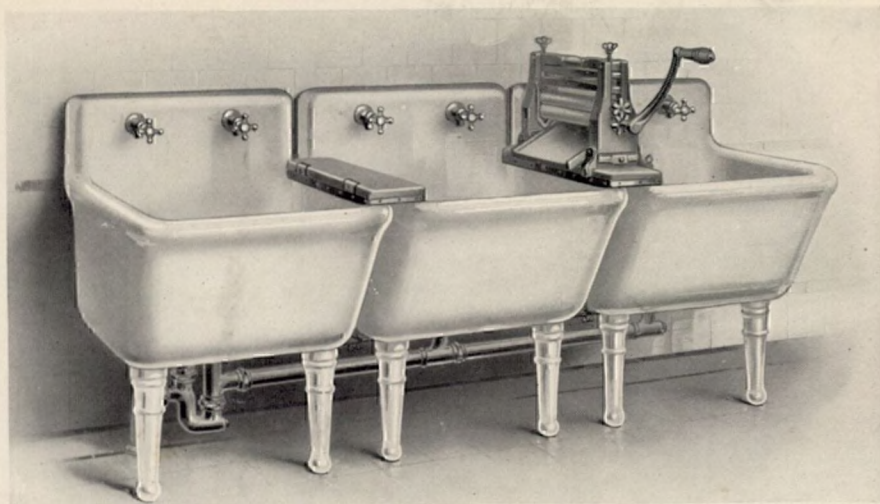


Plate 7210-A

Plate 7210-A—The “Wentworth” imperial porcelain roll-rim wash tubs with integral backs (ground), imperial porcelain legs, n. p. cast brass waste plugs with n. p. stoppers, n. p. $\frac{5}{8}$ ” compression wash tub faucets with china name-plates, wringer base (patented), set of two, Size 1

Imp. Porc.
Classes A and B
Sizes

2' 0"	x	2' 7"
2' 7 $\frac{1}{2}$ "	x	2' 7"
2' 0"	x	2' 7"
2' 7 $\frac{1}{2}$ "	x	2' 7"

Can be furnished with painted or bronzed iron legs.

N. p. $1\frac{1}{2}$ ” or 2” continuous waste pipe with 2” half S trap.

Mott special wringer.

Dimensions—Length of each tub from right to left and width from front to back given above; depth inside, 1' 3”; height of back, 6”. The integral backs are recessed behind with room for the pipes and are ground to fit against the wall.

Plate 7211-A—The “Hanover” imperial porcelain roll-rim slop sink with integral back, n. p. strainer, bronzed iron trap standard and n. p. $\frac{5}{8}$ ” compression faucets (n. p. 4-ball metal handles with china name-

Imp. Porc.
Classes A and B
Sizes

20" x 18" x 12"
22" x 20" x 12"
24" x 22" x 12"

plates
Can be furnished with vitreous china trap standard, No. 10 brass floor flange and china caps.

Can be furnished with n. p. $\frac{5}{8}$ ” “Harlem” compression faucets with china name-plates. Brass bent thimbles for faucets, extra.

Can be furnished with n. p. No. 4 “Belknap” $\frac{5}{8}$ ” combination compression faucet with pail hook on nozzle and brace.

Spring rim guard, n. p., extra, 20”; 22”; 24”.

Dimensions—Above dimensions are outside, except depth, which is inside; height of back, 12”.

Note—When ordering, state if trap is to be with or without vent hub; also, if for lead or iron waste pipe.



Plate 7211-A

The J. L. Mott Iron Works

Trenton, N. J.

New York: *Fifth Avenue and Seventeenth Street*

Showrooms

*BOSTON	41 Pearl Street, cor. Franklin	*DES MOINES	205-211 West Court Ave.
*PHILADELPHIA	1006 Filbert St.	*SAN FRANCISCO	553-555 Mission St.
WASHINGTON, D. C.	Woodward Building	*PORTLAND, ORE.	Sherlock Building
*DETROIT	51 Temple Ave.	*SALT LAKE CITY	150-152 West First St.
*TOLEDO	430-434 Huron St.	*ATLANTA	Peters Street Viaduct
*CHICAGO	104 South Michigan Ave.	*CHARLOTTE, N. C.	244 West First St.
*ST. LOUIS	Tenth and Chestnut Sts.	*JACKSONVILLE	9 Jefferson St.
*EL PASO, TEXAS	Overland and Virginia Sts.	*KANSAS CITY, MO.	1315 West 12th St.
*INDIANAPOLIS	241-243 North Delaware St.	*LINCOLN, NEB.	Seventh and P Sts.
*CINCINNATI, OHIO	426-428-430 Plum St.	*ST. PAUL, MINN.	Park Sq., Fifth and Sibley Sts.
*CLEVELAND, OHIO	1849-61 Prospect Ave.	FARGO, N. D.	519 First Ave., North
*COLUMBUS, OHIO	Goodale and Kerr Sts.	DULUTH, MINN.	318-320 West Michigan Ave.
*HOUSTON, TEXAS	806 Walnut St.	*TORONTO, ONT.	111 Church St.
*ROANOKE, VA.	11 and 13 Salem Ave.	*MONTREAL, QUE.	134 Bleury St.
*NEW ORLEANS	822-838 Tchoupitoulas St.	*HAVANA, CUBA	Egido 4 y 6
*DAYTON, OHIO	601-615 East Monument Ave.	*MINNEAPOLIS, MINN.	818-828 South Fourth St.

Offices

PITTSBURGH	People's Building	LOS ANGELES	716 Central Building
*NEWARK	304-306 Jelliff Ave.	WINNIPEG, MAN.	107 Union Trust Building
STOUC FALLS, S. D.	310 East Eighth St.	SEATTLE	747 Central Building

Branches marked * have warehouses.