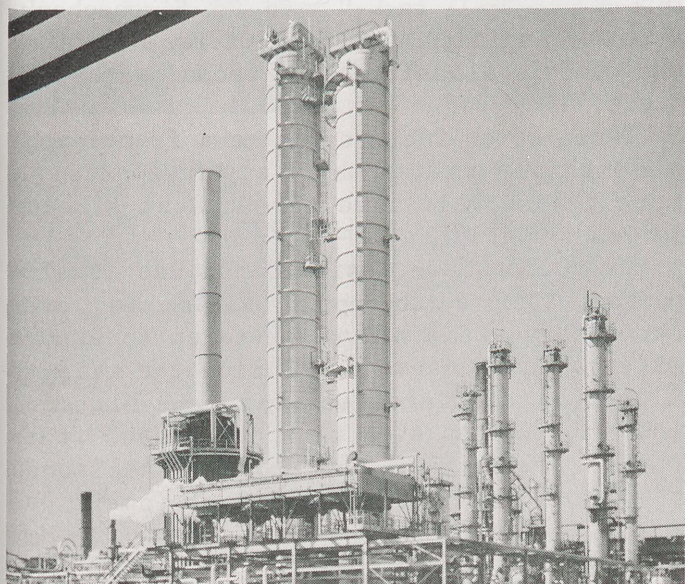


Shellegraph

Houston Refinery

No. 44

Friday, November 26, 1971



Orthoxylene unit on stream.

ORTHOXYLENE FACILITY ON STREAM, TO PRODUCE 200 MILLION LBS. A YEAR

Shell Oil Company has announced the successful startup of a new orthoxylene facility at the Refinery.

The facility, which can produce 200 million pounds of orthoxylene a year, went on stream in mid-November.

It is the second major expansion of the Refinery's aromatics facilities since 1967 and enlarges Shell's line of petroleum-based aromatics produced here. Other aromatics produced at the Refinery include benzene, toluene, paraxylene, and solvent xylenes.

As part of the project, two 180x15-foot columns were erected and an instrument console for process control was installed in the Paraxylene control house.

In connection with the new facility, revisions were made in the aromatics concentration unit, the feed preparation unit, and three new storage tanks were built.

Fill 'Er Up Mac

SHELL REFUELS EMPEROR'S PLANES UPON ROYALTY'S TOUR OF COUNTRY

Shell fueled the Emperor of Japan's jet aircraft "by request" recently during Hirohito's unprecedented visit to the United States.

Before announcement of the visit was made public, Head Office Aviation received a request from Japan Air Lines to refuel the Emperor's airplanes with "utmost care" at the Anchorage (Alaska) Airport when Hirohito and his entourage reached the United States and again when they left.

This appeared to be a routine task--until the announcement that President and Mrs.

(Continued on Page 2.)

TOYS FOR TOTS CAMPAIGN UNDERWAY, BRING HAPPINESS TO NEEDY KIDS

By now everyone at your house is making plans for Christmas and compiling long-gift lists to include the family and friends.

But in some homes in this area, there will be no gift-giving, no gaily wrapped packages to unwrap, no excitement over that special toy.

Because there are homes where Christmas will be just another day, the 1st Battalion, 23rd Marine Regiment (reserve) will again hold their "Toys for Tots" campaign. The drive is held to provide toys for some 3500 needy children.

If you have some extra toys that are in good condition, or if you want to buy some new ones for these needy kids, you may deposit the gifts at either Burger King or Kentucky Fried Chicken restaurants. The Marines will pick up all the toys and conclude the drive with a Christmas party for the kids on December 19. The party will be held at the Marine Corps Reserve Training Center, 1902 Old Spanish Trail.

If you can't get to one of the pickup locations, call the training center at 747-2940 for pickup. Receipts for tax deductions are available upon request.



Make this tot and other children like her happy this Christmas through Toys for Tots.



Freddy Taylor (R.) & Jerry Logan look through mementoes of Freddy's racing days.

FREDDY TAYLOR'S EXPLOITS IN RACERS, MIDGETS, THAT IS, REMEMBERED

Freddy Taylor, an Operator No. 1 in R Department at the Chemical Plant, was "Shell news" long before he was an employee there.

Eight years ago Freddy's midget racing hobby was the subject of a feature story in the Shellegraph. He was 13 years old then and already a racing veteran of four years, having won more than 100 trophies and ribbons. His father A. L. Taylor, Sr. is a painter at the Refinery.

A picture of Freddy with famous driver Craig Breedlove, who was at that time "The fastest man on wheels," appeared with the story. Freddy said that he still has a press kit that he got when he met Breedlove, who was on a promotional tour.

Freddy has given up racing, graduated from Galena Park High School, attended San Jacinto College, and gotten married. Although he no longer races, Freddy is still fond of cars. He built one a couple of years ago, sold it, and now has a new one--"store bought."

Now 21 years old, Freddy went to work at the Plant in June 1970. It was his father's idea that he apply, and before long, he had a job there.

When presented with a copy of the September 24, 1963, issue of the Shellegraph, Freddy smiled and said, "that sure seems like a long time ago."

SHELLEGRAPH

Published by Shell Oil Company for its Houston Refinery and MTM Research-Houston employees at Deer Park, Texas.

Mrs. Josie Ochoa--Editor

Reprints allowed only by request. To submit news and photographs, call extension 541 or send material to Room 103, Main Office Annex.

SHELL REFUELS EMPEROR'S PLANES-- (Continued from Page 1.)

Nixon would be on hand to greet the Emperor, meaning the location of the refueling would be changed to Elmendorf Air Force Base, about eight miles away.

"The change in plans meant that we would have to move four 10,000 gallon fuelers and three 5,100 gallon fuelers eight miles and this was no small task," said Ike Eigenschenk, a Senior Engineer with Head Office Aviation, who went to Alaska to lend technical assistance.

"These seven fuelers became a fraction of a 26-vehicle caravan which at times extended more than a half mile through the streets of Anchorage."

The fuelers are designed for use at airports and not on the open road; so many precautionary steps had to be taken to ensure safety of the caravan. During the trip to Elmendorf all intersections were blocked; only one fueler at a time negotiated steep hills; brakes were checked at pre-planned points en route; and special equipment was brought along to contain and clean up any possible spills.

George Gutierrez, Anchorage Plant Superintendent, coordinated the move with the State Highway Department, the city police, the State Highway Patrol, the fire department, the U.S. Air Force, the FBI, the Secret Service, and the Anchorage Airport Security.

The refueling went off without a hitch and was accomplished 15 minutes faster than the allocated time. The outward bound flight also presented no problems, since the Emperor's planes landed at Anchorage Airport en route to Japan.

WELCOME TO SHELL



Mrs. Juanita Freeman
Stenographer
Treasury

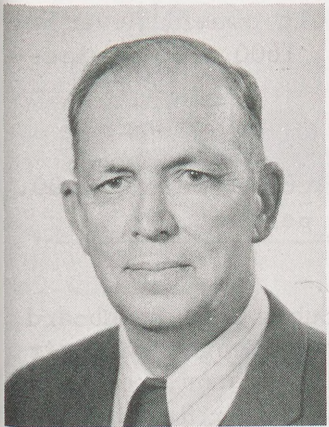


Mrs. Lois Reeves
Nurse
Employee Rel.



Miss Terry S. Ruiz
Stenographer
Treasury

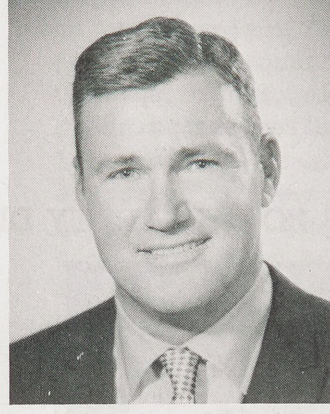
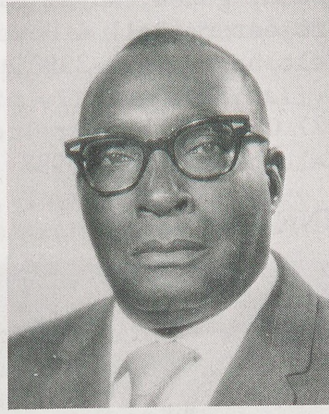
SERVICE ANNIVERSARIES



35 Years
J. W. Williams
Aromatics

30 Years
C. O'Toole
Eng. Field

25 Years
L. W. Cope
Cat. Cracking



25 Years
A. E. Krc
Research

25 Years
C. Toler
Eng. Field

25 Years
L. E. Tucker
Eng. Field

FIRST STAGE OF PASEO APARTMENTS UNDER CONSTRUCTION AT PLAZA DEL ORO

The first stage of the Paseo Apartment development in Shell's Plaza del Oro complex is now under construction.

It calls for the erection of more than 1,200 apartment units on 35 acres at a total investment of about \$20 million. However, when all stages of construction are complete, it could represent an investment of \$100 million for the 3,000 apartments spread over 95 acres and several high-rise apartment buildings now planned for the development.

The Paseo project, along with Shell's new data center also under construction and a new medical facility completed recently, represent the first developments to be announced for Plaza del Oro, Shell's 544-acre "city within a city" near Houston's famed Astrodome complex.

The first three stages call for construction of unusual garden style apartments that are being offered to the public on a unique pre-construction leasing plan. This plan will allow initial apartment residents to choose their own decorating themes and add, at builder's cost, extra features such as special lighting, hardware and cabinetry.

The garden apartments will be contemporary in design and will incorporate a construction feature unique to the Houston apartment market. This feature is a broad promenade walkway or "paseo" that will connect all buildings at the second floor level.

Six available floor plans include one bedroom bachelor and bachelorette apartments with one bath, units with two master bedroom suites and two baths, and three bedroom units with two-and-a-half baths. The apartments will range in size from 600 to 1,400 square feet each. They will rent from \$139 to \$290 unfurnished and can also be leased with furnishings.

Plaza del Oro, which is one of the lar-

gest developments of its kind in Houston, is a planned phase, 10- to 15-year project that is master planned to accommodate apartments, office buildings, commercial and medical facilities. It is bounded roughly on the north by Old Spanish Trail, on south by the South Loop, on the east by the new South Freeway now under construction, and on west by Knight Road and Kirby.

GOLF SHOW MADE AVAILABLE TO TV, COMMERCIAL PACKAGE MAY BE SHOWN

"Shell's Wonderful World of Golf"--minus the well-known pecten and references to Shell--is again being made available to television.

Arthur Pickens & Associates of Chicago has obtained rights to the show and plans to market a commercial package containing 50 outstanding tournaments from the series, which appeared on television under Shell sponsorship for nine consecutive seasons.

The edited segments will allow new sponsors to insert their own commercial messages into the series, retitled "The Wonderful World of Golf."

"Shell's Wonderful World of Golf" was retired from television in 1970 after 92 matches featuring some of the world's greatest golfers on courses from Malaysia to Massachusetts. The Emmy Award-winning series made vicarious world travelers out of 10 to 12 million viewers weekly and was vastly successful in its time.

OIL FACT

Oil is the number one commodity in international commerce, comprising more than half the volume of the world's seaborne trade.

CLASSIFIEDS

FOR SALE

Piano, good condition, matching bench, \$195. 2301 Ingersol, Pasadena, Telephone: 473-5169

1968 Sea King boat, motor and trailer. Boat is 14 foot, flat bottom, tri hull, 35 hp. motor, big wheel trailer, clean rig, rarely used. Telephone: 473-1991 after 5

T600 Galion Grader--IH TD 25 Dozer, 1953 & 1963 Gradalls, sell separately, \$35,000 for both. Telephone: 472-2266

Set of twin beds, western style, inner spring mattress & box springs, excellent shape. \$75 Telephone: 473-7539

1971 Honda SL 175, adult owner, never abused, show room perfect, 1600 mls. Price--\$475. Telephone: 473-7034

20 ft. Norge refrigerator-freezer, \$100. Electric range, works perfect, \$25. Telephone: MO 5-7126

Drexel bedroom suite, double bed, headboard, dresser, nightstand, black Naugahyde chair, Kenmore dryer, Norge refrigerator, sofa with foam cushions, Karastan rug, 9x12, gold, brown, green, Royal manual typewriter, 8 mm projector (Bell & Howell), almost new. Telephone: 468-3990, 13403 Taylorcrest

327 Chevy V8 4 barrel carb. & manifold, \$30. Telephone: GR 2-5988

ENGINEERING SERVICES HOLDS SAFETY DINNER



Jim and Sharon Gibbs, John Swinney and Dale and Betty Johnson were among honored



guests who attended the Engineering Services safety dinner party.



Joe and Camella Tesoro, Jane Ellen and Roger McCarthy, Pete Samsury, Frances and Ron



Chapman, Bob and Helen Pate and Evelyn and Ross Phillips enjoyed the dinner.



In animated conversations were Geoffrey Kinison, Larry Tinkler, Nelson and Jerry Linke,



Faye and Morton Boston, Joe Davis, Layton and Phyllis Tuggle and Frances Davis.