

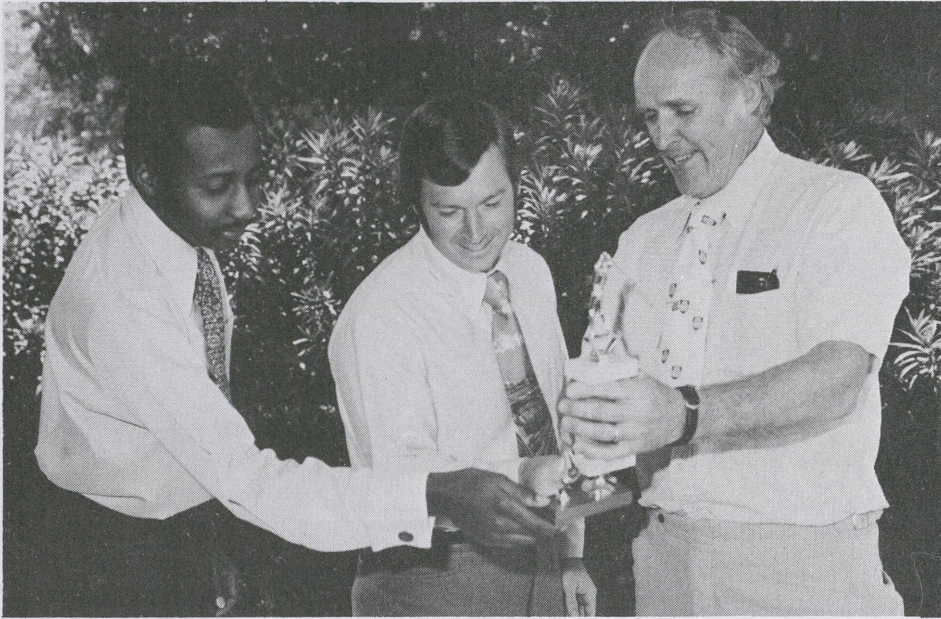
Shellegram

Deer Park Manufacturing Complex

Thursday, March 31, 1977

Vol. 42, No. 12

BLUE LETTER DAY AT BLUEBONNET COUNTRY CLUB



Bill Telschow (far right) shows analysts Bill Copeland and Mike Patton the trophy he won at the Bluebonnet Country Club's Spring Playday.

It was a blue letter day at the Bluebonnet Country Club for Purchasing senior analyst Bill Telschow. That was the day he shot 79 on the golf fairway during the 1977 Bluebonnet Spring Playday.

Surprised at winning a trophy, Bill says, "What happened was we had a little tournament up there. I felt I didn't have a chance - even with my 10 handicap, but the next lowest score was 81."

Bill gave the trophy to his six-year old granddaughter who plans to take it to school to show her friends telling them to "Look at what Granddaddy won." Right now Granddaddy has it at work to show his friends!!!

Golf isn't Bill's only extracurricular sports activity. In 1941 he was signed up by the Detroit Tigers as a pitcher right from Rice University. At Rice he starred on the

(Continued on page 3)

SHAREHOLDERS TO VOTE ON 2-FOR-1 STOCK SPLIT

If shareholders approve the two-for-one stock split at the Annual Shareholders' Meeting on April 28 in Houston, employees participating in the Shell Stock Plan will own twice as many shares the next day.

Although a stock split occurred only twice before in the company's history, it is not unusual. In the past year alone, 105 companies listed on the New York Stock Exchange split their stock.

Many shareholders believe that splits improve their position, but they don't - technically. Any effect on the growth of the stock is purely psychological. In a two-for-one split, shareholders don't double their money; they simply have two shares representing the same investment they had in one.

Companies split their stocks to gain a wider distribution. The more in the market, the more investors in the company. Lower priced blue-chip stocks are more attractive and thus have greater marketability. And when the dividend is increased along with the split, the stock becomes even more

attractive. The boost in the dividend rate, as Shell has done, is really the only bullish part of a stock split.

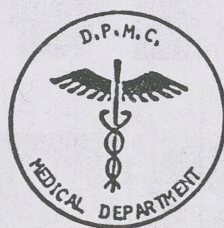
With Shell's two-for-one split, the number of shares of common stock outstanding will grow to 160 million from the present 80 million. In addition, the company will hold 90 million shares - over and above the split - that it anticipates it may need over the next ten years or so.

Employees may at any time direct the sale of a part or all of their shares, with the cash credited to their Thrift Account.

SHELLEGRAM OFFICE BEING RELOCATED

Due to the upcoming move of the *Shellegram* office, there won't be a newspaper next week.

All ads received too late for this week's paper will appear in the April 14 issue.



Open House
Sunday, April 3, '77
2 to 4 p.m.

ALL SHELL EMPLOYEES AND THEIR FAMILIES ARE INVITED TO AN INFORMAL OPENING OF OUR NEW MEDICAL DEPARTMENT DISPENSARY. THE NEW FACILITIES ARE LOCATED AT THE CHEMICAL PLANT ENTRANCE AND WILL OFFICIALLY OPEN TO RECEIVE PATIENTS ON MONDAY, APRIL 4, 1977, AT 6:45 A.M.

CONTEST UNCOVERS INTERESTING CARPOOLS

Would you believe a nine-member carpool that has survived seven years? How about a five-member carpool that travels 52 miles one way every workday?

It's true. These were two of the four winners of the contest held recently to promote a carpooler matching program. Awards were given to the carpool which traveled the furthest and least distances, the one with the most members and the one which had existed the longest.

When the contest was first announced in the *Shellegram*, the editor received a telephone call from a 17-year veteran carpooler who was sure her group had been in the existence the longest and therefore had won the prize. Not so! There are 11 other carpools which had survived as long, or longer, including the winners who had been carpooling for 29 years.

The winners of the least miles traveled cover 1.6 miles to work and they've been riding to work together for the past 25 years.

Each member of the winning carpools received their choice of prizes, which included a 20-gallon fillup, car wash, oil change and lube job; a tune-up; a Foley's gift certificate; or dinner for two.

Response to the matching

program was encouraging with 10 percent of the 3,200 employees indicating an interest in forming a new carpool or join an existing one.

Monthly drawings are now being held in which all carpools, old and new, are eligible. The carpooling program is an effort by the company to promote energy conservation, reduce traffic congestion in the area and to help alleviate the current congested parking conditions.

To enter your carpool in the second drawing, fill in the form on page 4. Include each carpooler's name and their company number on the form. If you don't know your company number, look on your badge. It's in the lower right-hand corner.

The deadline for entering the second drawing is Monday, May 2. One entry per carpool, please.

Winners of the first drawing will be announced in the April 14 issue.

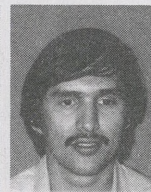
WELCOME TO DEER PARK MANUFACTURING COMPLEX



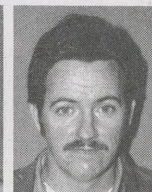
Robin Adair
Machinist No. 1
Maint. Engrg.



Mike Ashen
Auditor
Auditing



Alfred Ballesteros
General Helper
Maint. Engrg.



H. G. Bateman
Machinist No. 1
Maint. Engrg.



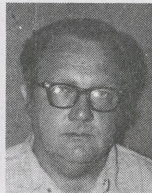
Annette Bozeman
General Helper
Maint. Engrg.



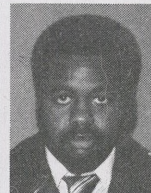
Harold Butler
General Helper
Maint. Engrg.



Peggy Cahill
Engineer
Proc. Eng.-East



Bob Carter
Machinist No. 1
Maint. Engrg.



Darryl Cavole
Engineer
Proj. Eng.



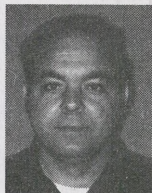
Mike Collins
General Helper
Maint. Engrg.



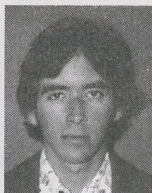
David Fears
General Helper
Maint. Engrg.



Chip Ferrell
General Helper
Eng. Field



Bob Fontenot
General Helper
Eng. Field



Rob French
Engineer
Proj. Eng.



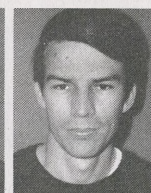
Ray Gates
Rigger No. 1
Maint. Engrg.



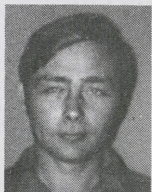
Marta Genus
Jr. Clerk
Services



Martin Gilliard
General Helper
Eng. Field



Philip Gomez
General Helper
Maint. Engrg.



Mel Hokanson
General Helper
Maint. Engrg.



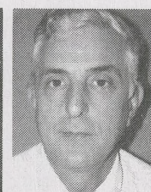
Tom Keller
Sr. Engineer
Instrumentation



Scott Kennedy
General Helper
Maint. Engrg.



Roger Lay
General Helper
Maint. Engrg.



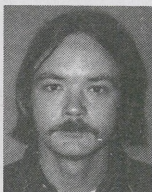
Harpo Manns
Optn. Foreman
Phenol



Glenn Maxwell
Electrician No. 1
Maint. Engrg.



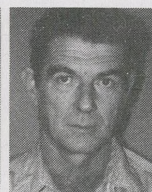
Kirby McKillip
Sr. Engineer
Proj. Eng.



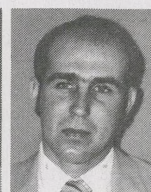
Pancho Miller
General Helper
Maint. Engrg.



Derrick Milton
General Helper
Maint. Engrg.



Joe Mims
General Helper
Maint. Engrg.



Garey Nelson
Accountant
Prod. Acctg.



Gus Noojin
Process Manager
Resins



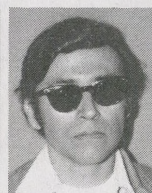
Larry O'Gilvie
General Helper
Maint. Engrg.



Bob Reineke
Sr. Accountant
Prod. Acctg.



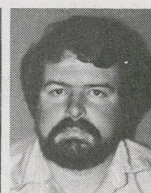
Gary Risenhoover
General Helper
Eng. Field



Roy Rodriguez
Machinist No. 1
Maint. Engrg.



Marty Schneider
General Helper
Maint. Engrg.



Randal Tanner
General Helper
Maint. Engrg.

PROVIDENT FUND NEWS

The Provident Fund valuation is as follows:

EQUITIES FUND

March 15 - \$2.578

SHELL STOCK FUND

March 1-15 - \$73.637



Randee Rabbit wishes to remind everyone that the SCORA Easter Egg Hunt is Sunday,

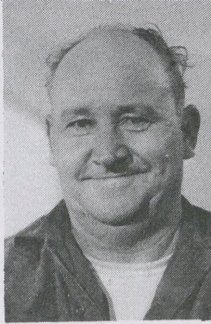
April 3, from 2-4 p.m. at the Deer Park Junior High School.

For further information and details on how to get to the school, check your bulletin board.

DEATHS

Hubert H. Taylor, 66, died March 25.

At the time of his retirement in June 1974, Hubert had almost 28 years of service. He left as a welder No. 1, Engineering Field.



Hubert made his home in Deer Park.

MORE FOR SALE CLASSIFIEDS....

Honda 90 street bike, 920 miles. \$150. 488-2775

1973 Trophy 5th wheel 30' travel trailer, loaded. \$6,000. 339-2397

Small wheel boat trailer, good for 1500#. \$125. 476-4849

23" Philco color TV, good picture, walnut cabinet. 1977 Dodge Tradesman customized paint job. Assume payments. 645-9975 after 5 pm

1973 Honda 750, excellent condition, 8,000 miles, extras. \$1,300. 643-8859

1965 Ply Valiant V8, runs good. \$250. 479-3829

1966 Chevy 4-speed truck, 283 motor. \$600. 334-2009

1968 Chevy pickup, 6 cyl, std, short wide bed. \$750. 1971 Pinto, 1600 cc, 4-speed. 472-8425

Blue letter day at Bluebonnet Country Club....

football team as well as on the baseball team.

When World War II came along, he joined the Marine Corps. An injury suffered during the war dashed any hope of continuing professional ball playing, so Bill joined Shell's team. In those days (1946-51) Shell had its own baseball team, and Bill did its pitching.

"We had a good hard-hitting club. We even beat a professional team during an exhibition game in Lufkin," remembers Bill.

Where the spherical polypropylene tanks now stand (along Hwy. 225), a baseball diamond and ball park stood.

"It looked like a big league ball park," says Bill. It had a grandstand built out of old Dubbs 9 boiler tubes, and there were games almost every Saturday and Sunday. We played all of the oil company teams in our area, and I think we won 99 percent of the time."

So, sports aren't new to Bill Telschow.

He enjoys telling about the time the Shell team played in Waco.

"I had a no-run, no-hit game going. Old Cleve O'Toole (now retired) was the catcher. It was the last inning. A man was on second base. There were two outs and a 3-2 pitch on the batter. The best pitcher got \$50. Old Cleve kept calling for a curve," says Bill, "and I would shake him off for a fast ball."

Finally Cleve stormed out to the mound insisting upon a curve. So Bill threw a

curve, and the batter hit the ball so hard it was all Bill could do to jump out of its path. Before the ball was recovered, the opposing team made a run and a hit, and Bill lost the \$50.

This was the same game that found the bases loaded when Johnny Campo came up to bat. Johnny hit the ball so hard that, according to Bill, it disappeared into orbit, and the Shell team scored four runs.

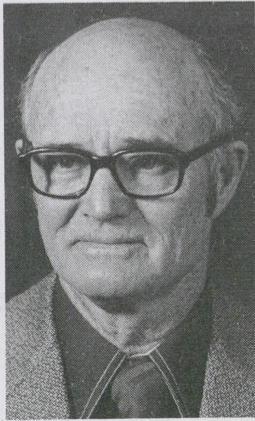
"Those were wonderful barnstorming years. Our team traveled to a good many Texas cities. We didn't have much radio or newspaper advertising in those days, but our baseball team sold lots of products with its good sportsmanship, says Bill.

Other employees and retirees (*indicates retirees) who played were: Bobby Schroeder, pitcher; Billy Amerson, catcher, Johnny Campo, shortstop, *Lawrence Mancuso, manager and business manager; A. R. Pustejovsky, infield; *Claude Cassidy, right field; *Don Bailey, left field; *Dixon Kirk, center field; Johnny Johnson, second base; Roy Pitts, third base; *Allan Hayes, catcher; Jack Phillips, right field, Charlie Clemons, center field; Otis Richardson, pitcher, infield; *Allen Thurman, third base and manager; *Cy Gaulk, catcher; Leonard Burton, pitcher; Eddie Lutcher, catcher; Grover Noonan, center field; Duke Ellington, center field; *Lefty Bishop, pitcher; and Ken Benjamin, second base.

SERVICE ANNIVERSARIES



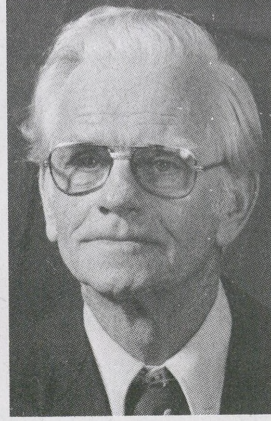
35 Years
C. C. Horton
Utilities OP-II



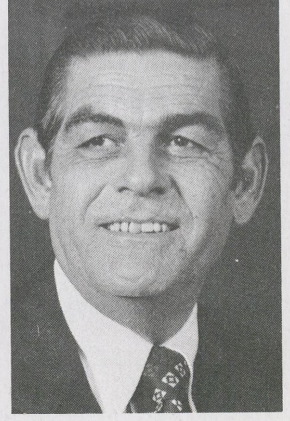
30 Years
C. T. Archer
Cat. Cracking



30 Years
P. W. Gudgell
Process Engrg.



25 Years
F. P. Fitzgerald
"A" Department



25 Years
J. H. Robinett
Design Offsites Util.

CLASSIFIEDS

FOR SALE

Honda 750 wixom fairing; Honda 550 rear wheel; Honda 450 gas tank and side covers; Honda 750 water seat.
337-2086 after 5:30 pm

1976 Cutlass Supreme 2-door, 350, Landau roof, AM-FM stereo tape, power, air, auto, tilt wheel, sport wheels & mirrors, 60-40 seat, 13,000 miles. \$5,095.
455-7393

3-2-2 house in Middlebrook, CLC, formal living, cathedral family room, extra large master bedroom, custom drapes, immediate occupancy. \$49,500.
488-0418 after 2:30 pm

Camper shell for LWB pickup. \$50.
487-0278

1970 Ford Ranger pickup, L/W, A/C, some dents, needs minor repair. \$800.
328-3212

Camper shell L/W, paneled and insulated. \$160.
328-3212

Mower-Mott Hammer-Knife, 6' wide, 3-point hookup. \$300.
328-3212

Lake Livingston, Putnams Landing, 2 lots and 1971 winner house trailer, near dam. \$9,995.
427-3155

150 Homelite 20" chain saw, auto, oiler. \$95. New 6 hp Tecumseh vertical engine. \$60.
472-5988

1969 Mustang Mach 1, 351 cu. in., A/C, automatic, AM radio, P/S, 41,000 miles. \$1,500.
869-7946

1973 Chrysler New Yorker 2-door, loaded, excellent condition, tape deck.
489-7160

Toledo Bend Lake, Pendleton Harbor lot in restricted development. \$5,200.
471-0916

6 cylinder Chevrolet engine and transmission, good condition. \$100.
472-8795

Sansui TU-5500 150-watt AM-FM tuner and AU-600 250-watt amplifier, Sony PS-4750 turntable, 2 Pioneer MX-15 100-watt speakers.
477-4575

1973 Honda 750 cc, windshield, luggage rack, backrest, crash bars, headers, 16" Harley wheel, runs good. \$1,000.
489-7708

3/4 hp power table, electric motors, Coleman lantern and burner, 26" girl's 3-speed bicycle, 13'6" Searfish sailboat.
471-4220

4-ton central air conditioner with coil, sensing unit and compressor, 100,000 BTU, ceiling heater, never used.
738-3592 after 4 pm

1976 15½' Phantom trihull, walk thru windshield, 75 hp Chrysler OBM, big wheel trailer with buddy bearings, all ski equipment, 8 months old. \$3,100.
477-4944

1973 Kawasaki 500 motorcycle.
946-5058 after 4:30 pm

GE combination washer/dryer, beautiful condition. \$175.
644-0133

English Springer Spaniel puppies. Make offer.
482-3863

1971 Chevy pickup, 350 cu.in. A/C, P/S, P/B, automatic. \$1,695.

1½-ton Friedrich A/C, no rust, good shape. Wall furnace, 50,000 BTU, 2 outlets. 42" attic fan. \$150 for all.
473-3647

Quarter horse, 6½ years old, gentle, fat & sassy. \$300.
944-0379

1965 Ford conv., 352 cu.in., automatic. \$1,800.
477-2428 before 3 pm

1975 Yamaha YZ80B motorcycle, Moto-X dirt bike, excellent condition. \$395.
479-5791

8'x7' garage door with hardware, good condition.
944-2883

WANTED TO BUY

Apartment size washer/dryer.
476-5722

Upright or spinet piano.
472-0945

FOUND

25-year tie bar service emblem with 1974-BJG on back. Charm with picture of child in it. Claim at *Shellegram* office.

PERSONALS

To all of my friends and coworkers at Shell, I would like to thank each of you for the nice scroll and the gifts given to me at my retirement. Come visit with us at 1209 Alpha Drive in Pasadena.
- L. W. & LaVerne Lister

Anyone witnessing the stalled car in the middle lane of Hwy. 225 on January 13 prior to Ray Hornsby's accident, please call him on 6567 or 649-1033.

CARPOOL CONTEST ENTRY FORM

I would like to enter my carpool which consists of the following individuals:

	Co. #
	"
	"
	"
	"
	"

We formed our carpool _____ (month/year) and travel _____ miles.

MAIL ENTRY FORM TO: SHELLEGRAM - MOA 103

SHELLEGRAM

Published by Shell Oil Company for its Deer Park Manufacturing Complex employees at Deer Park, Texas.

Dotti West, Editor