

shellegram

SHELL OIL COMPANY
HOUSTON REFINERY

SHELL CHEMICAL CORP.
HOUSTON PLANT

VOL. 22, No. 1

HOUSTON, TEXAS

JANUARY, 1957

Roorda Named New Chemical Assn't. Supt.

J. F. Roorda has been transferred from the Norco Plant, where he was serving as an Operating Department Manager, to the Houston Plant. He will assume the duties of Assistant Superintendent-Technical, replacing D. N. Rindsberg, who has been assigned Assistant Superintendent-Operations.

Roorda received a PhD in chemical engineering from Purdue University. In 1949 he came to work for Shell Chemical as a Technologist at the Martinez Plant in California. Later he was appointed Technical Assistant-Operations. In 1952 Roorda transferred to the New York Office and two years later returned to Calif. at the Ventura Plant as a Senior Technologist.

In 1955, Roorda moved to the Norco Plant as Chief Technologist, and one year later was promoted to Operating Department Manager.



J. F. Roorda

Four Refinery Workers Retire

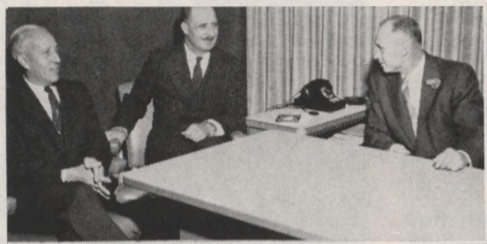
Four employees with a total of more than 97 years service at the Refinery retired Jan. 1.

Those who left Shell are Landal E. Lee, Office Engineer; Taylor D. Harris, Shift Foreman in Cat. Cracking; Oda L. Dunham, Pipefitter No. 1, and Edwin B. Lierman, Treater Helper No. 1.

Lee retired with more than 7 years service and with plans to sell his home in Houston and move to California because of the climate. Lee began his career as a designer at a time when construction of the Refinery was just getting underway.

Harris also began working for Shell as the Refinery was springing up a little more than 8 years ago. His retirement plans include moving to a

Cont. on P. 3, Col. 1



The new civic center at Deer Park was recently dedicated with a number of Shell employees taking part. Boy Scouts and Army Reserve members raise the flag while officials look on in the main picture. The upper inset is Chemical Plant Manager Glenn Purcell, Refinery Manager John Tench and Deer Park Mayor E. E. Dunn seated in the Mayor's office. In the lower inset, members of the Firebelles, auxiliary unit of the Volunteer Fire Department, serve refreshments to Fire Chief W. A. Penny and his assistant, F. J. Schindler, who was Deer Park's first chief and is an employee of the Refinery's Welding Shop. The Firebelles are (left to right) President Mrs. H. B. Kesterson (husband in G Dept., Chem.), Vice-President Mrs. W. L. Gailey (husband in Epon 2, Chem.), Secretary-Treasurer Mrs. Jimmie Walker (husband in Lube A, Ref.) and Ex-President Mrs. Penny.

Shell Workers Participate In Deer Park Dedication

Deer Park's new city administration buildings, which were constructed by Shell, were formally dedicated Dec. 15 with a flag raising ceremony and open house.

Refinery Manager John Tench and Chemical Plant Manager Glenn Purcell took part in the dedication of the three-building unit which was built at a cost of \$70,377. Mayor E. E. Dunn and two Deer Park city councilmen who are Shell employees took part in the event.

Following the flag raising ceremony performed by Army Reserve personnel of the 406th Engineer Battalion and Boy Scouts, Mayor Dunn took the two Shell managers on a tour of the three one-story buildings. The flag was carried to the flag pole by A. L. Burrow, an American Legion member who works in the G. Dept. at the Chemical Plant.

Three-Building Unit

The unit consists of a city hall which houses the mayor's office, council room and business office; a jail, corporate court and police station all in one building, and a fire station and headquarters.

The flag was presented to Mayor Dunn by P. W. Stevens who erected the flag pole in the court yard between the three modern buildings.

Members of the Deer Park City Council who were present for the ceremony are J. E. Morton of the Refinery's Control Lab and J. T. Cutrer of G. Dept. at the Chemical Plant. Other Shell employees who are members of the Council are Jimmie Walker of Lube A, Refinery; James L. Cook, Dispatching, Refinery, and Felix Ward, Chemical, Pipe Shop.

Firebelles Take Part

Officers of the Firebelles, auxiliary unit to the Fire Dept., served refreshments in the meeting room of the fire station to open house visitors. They are all wives of Shell employees — President Mrs. H. B. Kesterson (Chem. G. Dept.), Vice-President Mrs. W. L. Gailey (Chem. Epon 2) and Mrs. Walker, Secretary-Treasurer.

The buildings were all in actual use for several weeks prior to the flag raising.

The buildings were designed by Jack M. Reber (AIA), Baytown, and constructed by the Felix A. Davis Construction Company, Houston.

Miller Given Farewell Party and Gifts

Approximately 140 friends and co-workers of J. L. Miller gathered together on Dec. 27 to honor him with a farewell party as he left the Refinery post of Superintendent-Operations to take over as Manager of the Montreal Refinery.

He was presented with gifts and a large, leather-bound souvenir book covering many portions of his nearly 20 years at the Refinery. It contained some 100 pages of photographs of events that took place during this period, pictures of all present department managers and their assistants and pages of signatures of employees in each department.

Related picture, Page 3

The book also contained a number of color cartoons depicting humorous incidents in Miller's career at the Refinery, with particular emphasis on his penchant for neatness around the Refinery.

Refinery Manager John Tench served as toastmaster for the affair and Chief Engineer Bob Haldane was the commentator as the story of Miller's life at the Refinery was unfolded by color slides made from the cartoons in the book.

Miller was also presented with a number of humorous gifts. T. J. Reed of Automotive gave him a whisk broom, oil

can and cleaning rag so automotive employees in Montreal can keep his staff car clean. Hilda Chavalier, Miller's secretary, gave him a box of blue pencils and J. E. Stowers, Jr. (Eng.-Field), gave him a seed catalogue to help him maintain his keen interest in horticulture.

SERA Holding Member Drive

The Shell Employees Recreation Association is conducting its annual membership drive this month at both the Refinery and Chemical Plant.

Cards are available for all employees who are not SERA members authorizing the payroll deduction of the \$5 annual dues. Juanita Price (Chem.), a member of the Membership Committee, said all authorization cards must be turned in to the respective payroll sections by Feb. 1.

The dues of new members and old ones who previously authorized payment by payroll deductions will be taken out of the checks to be issued on Feb. 22 to hourly employees and on Feb. 15 to staff employees, she said. Dues may be paid in cash if desired.

Cont. on P. 3, Col. 4

Credit Union Meeting Set

The Shell Refinery Employees Federal Credit Union will hold its 20th annual meeting Monday, Jan. 21 for the purpose of electing new officers and declaring a dividend.

Open to all members and visitors, the meeting will be held at 5 p.m. in the Refinery Cafeteria, according to Treasurer J. P. Murray (Ref. Eng.).

The present officers will also make reports of the 1956 activities. The current President of the Board of Directors is E. J. Newton, Assistant Chief Engineer.

G. F. Breckenridge, Public Relations Director of the Members' Mutual Insurance Company, Dallas, will be guest speaker. The Credit Union will serve refreshments to those attending the meeting.

*Safety First
Last & Always*

Lab for Radioactive Research Now in Operation at Refinery

A one-time store room in the Refinery's Laboratory is now being used as a "hot lab" for research with radioactive materials.

Under the supervision of Dr. R. H. Hunt, the lab is a regular chemical lab with special equipment for handling radioactive chemicals. Every bit of planning that went into the facility had one main thought behind it — safety for the employees working there.

Dr. Hunt said that handling radioactive materials is no more dangerous than handling others if proper safeguards are established and utilized. The new lab is set up to provide these safeguards more than adequately for the levels of radioactivity which will be handled.

Research with radioactive materials had been conducted at the Refinery over the past five or six years. Increased research with those materials planned for the future will require these facilities.

Only those members of the Research staff who have been trained in the safe handling of such materials may use the lab for radioactive research.

All Surfaces Hard

Man has no natural way of detecting the presence of radiation. Therefore, the lab is equipped with instruments to protect workers from the radiation they can not see, feel, taste or smell.

The new facility is designed so that all surfaces are hard and can be easily cleaned, or even disposed of, in case radioactive chemicals splash on them. It is also built with the idea of limiting the number of places where dust may accumulate, carrying radioactivity with it.

The walls are made of sheet rock so that portions may be cut out if they become contaminated. Asphalt tile blocks in the floor may be removed. A hard enamel for easier cleaning is used on all painted surfaces.

Always present in the lab will be a monitor which operates on the Geiger counter principle, telling researchers by both sound and a dial how much radiation is present. Workers will use the machine to test equipment and their hands for the presence of radioactivity.

A large supply of rubber gloves will be kept in the room

because of the rule that nothing radioactive is ever touched with bare hands.

Use 'Dry Box'

Immediately apparent when a person enters the lab is another long pair of rubber gloves attached to a machine which reassembles a baby incubator. It is a "dry box" where experiments with radioactive materials that emit alpha and beta rays may be conducted. The researcher puts his hands and arms into the long gloves which are fitted over holes in the side of the apparatus. They slide into the machine and he can handle chemicals inside without touching them with his hands.

Experiments with alpha and beta radiation or very small amounts of gamma radiation may be conducted in the "dry box." Experiments with materials that emit large amounts of gamma rays must be conducted with greater protection.

Dr. Hunt explained that alpha rays will travel only one or two inches through air, while beta rays will go some six to eight inches. Gamma rays, however, will travel a considerable distance through almost all substances. They are very similar to x-rays, he said.

One piece of specially-designed equipment in the lab is a stainless steel hood and work bench equipped with a sliding glass door in front. An exhaust fan and a set of baffles provide a constant flow of air within the hood.

Filter Protects

A filter on the fan's outlet keeps contaminated particles from being passed to the exterior and the gases are safely dispersed into the air from a relatively high smoke stack.

Dr. Hunt pointed out that a researcher can build a lead brick "cave" inside the hood for particularly dangerous experiments, thereby protecting himself from dangerous radiation.

Another protective feature of the 16-foot square laboratory is hospital-type water taps that can be turned on or off with the wrist to avoid touching them with contaminated rubber gloves.

Getting rid of waste materials becomes a complicated process in this type of lab. Dr. Hunt said. Solid waste will be stored in a fiber-board drum and then shipped to the Atomic Energy Commission in Oak

Ridge, Tenn., for disposal. Liquid waste is retained in glass jugs set inside metal containers. It can be poured into concrete mixtures and disposed of similarly.

These waste materials can be shipped through ordinary express channels as long as they are not more radioactive than standards set by the Interstate Commerce Commission.

Have Pocket Monitor

Two interesting devices are available for the individual protection of each person using the facility. One is a small pocket monitor with a clip similar to a fountain pen that can be carried by the individual to give him an immediate, but not permanent, reading of the amount of exposure to radiation.

The second is a protective film badge worn by each individual while in the lab. These badges, made of a material very similar to the x-ray plate used by dentists, are worn for one week and then sent to Tracerlab, Inc., for developing. The company issues a report on the amount of radiation to which each individual has been exposed during the week.

A number of experiments have been carried out in the past or are planned for the future, utilizing radioactive materials, Dr. Hunt said.

Experiments can be conducted to determine the flow pattern in cat cracking units. Gamma rays are sent through the unit, giving various radiation counts on the other side because of different amounts of materials at different spots inside the cracker. This process is similar to taking x-ray photographs. A portion of the radiation is stopped by the material in the cracking unit with the monitor registering the amount that passed all the way through.

A great many "tracing" experiments can be conducted with "carbon 14," a radioactive carbon isotope made available by the AEC. Dr. Hunt explained that this radioactive carbon isotope can be included with regular carbon in many different products and processes and be traced by its radiation. This gives researchers information on exactly where certain substances go in manufacturing processes.

Dr. Hunt indicated that future experiments in "labeling cracking catalysts" may be conducted in the new lab. It can be determined exactly what happens to a catalyst by "labeling" it with the radioactive material.

Can Test For Leaks

It would also be possible, he said, to determine which of two or more catalysts is ground up faster in a unit by putting different radioactive isotopes in different catalysts at the same time.

Radioactivity can also be used to test for leaks in pipes by placing material in the line and then testing the suspected area with a portable monitor. The presence of undue radiation in any spot would indicate a leak in the pipe.



Dr. T. B. Metcalfe (standing) and Dr. R. H. Hunt of the Research Lab use a portable monitor to study the flow pattern in a cracking unit. The passage of gamma through the unit indicates the pattern.

Shell Development Consolidates Agricultural Research Activities

Shell Development Company is going ahead with plans to consolidate its agricultural research activities under one roof at Modesto, California.

Plans for the construction, according to Dr. H. Gershinowitz, president, provide for a large increase in present facilities at Modesto to house that portion of the firm's agricultural research staff presently located in Denver, Colorado.

An estimated \$1,000,000 will be spent by Shell for new

buildings and services. Construction is scheduled for completion by fall, 1957.

"Six major new laboratories and office buildings will be added to the present group," Dr. Gershinowitz stated.

Dr. Gershinowitz said that two laboratories are being combined to increase efficiency of operation. "The new combined laboratory is expected to be the outstanding industrial agricultural research center in the West of the United States. It will be among the best-equipped and most extensive industrial agricultural laboratories in the world," Dr. Gershinowitz said.

The Los Angeles firm of Austin, Field and Fry is architect, and Jack Evans, signer of the Disneyland grounds, is the landscaping consultant.

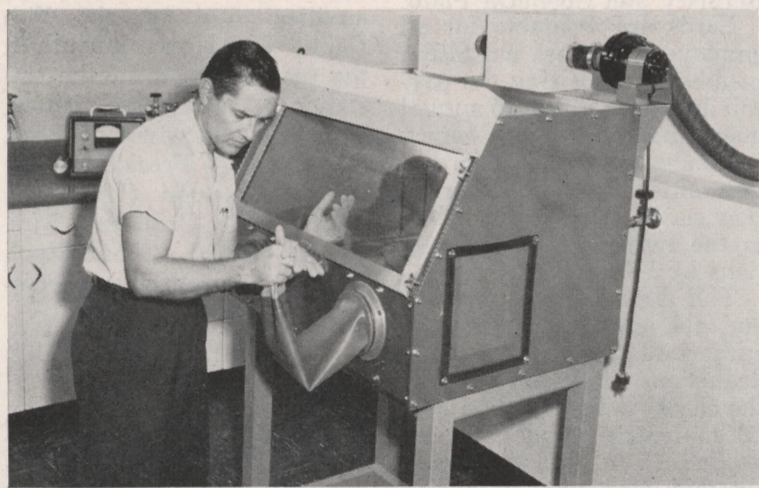
Other school honors included membership in American Institute of Industrial Engineers and Alpha Mu, honorary industrial engineering organization.

Refinery Hires Tech Girl Grad

Barbara Diane Michel is now working at the Refinery, proving that all graduates of Georgia Tech are not bruising football players.

Miss Michel, the first woman engineering graduate of the famous school, started work Jan. 2 in the Industrial Engineering Section at the Refinery.

Not only did the attractive 22-year-old blaze an academic trail at Tech, but she also showed the way for many of her male classmates by finishing in the upper third of her 1956 graduating class. Miss Michel is no stranger to Houston since she was graduated from Reagan High in 1952 as class valedictorian and worked in the drafting room for the Shell Development Company here one summer.



Dr. T. B. Metcalfe examines the rubber gloves which protect a researcher doing work with radioactive chemicals in the "dry box" which is one of the pieces of protective equipment in the new "hot lab" in the Research Dept.



JAKE KOBLER, Editor
(Refinery)

R. L. BURGET, Associate Editor
(Chemical Plant)

Staff photographers: Sam Davis, Al Locke

Published monthly for employees of Shell Oil Company, Houston Refinery, Shell Chemical Corporation, Houston Plant. Contributions of articles and photographs are welcomed. Address all communications to EDITOR, SHELLEGRAM, Shell Oil Company, P. O. Box 2527, Houston 1, Texas.



Viewing some of the gifts presented to Taylor Harris at his recent retirement party are (left to right) J. E. Watts, Harris, P. L. Benson, C. G. Scott, who replaced Harris as Shift Foreman in Cat. Cracking, and J. B. Moyers, Assistant Manager, Cat. Cracking.

Rubber Output Up at Torrance

Several phases of a multi-million dollar program to build versatility into Shell Chemical Corporation's plant at Torrance, California, were completed last fall to keep pace with growing and changing demands for synthetic rubber:

Among the new and extended facilities at the plant, which Shell purchased last year from the government, are:

A new unit to produce a special latex for the manufacture of foam rubber products. This will be the first such local source for western manufacturers of cold high solids latex.

Extensions to the butadiene facilities which will insure that customers receive a bigger supply of synthetic rubber in periods of raw material shortage.

Modernization of the synthetic rubber (copolymer) unit to pave the way for increased production and quality improvement. The copolymer unit receives butadiene and styrene from other units at the plant and reacts them in the presence of other ingredients to produce synthetic rubber.

Besides the additions to the manufacturing plant, Shell Chemical also is building a new research laboratory and pilot plant which will be completed early this year. These facilities will enable Shell Chemical to expand its already considerable research efforts in synthetic rubber.

The Torrance Plant, the only one of its kind west of the Rockies, is the main sup-



J. L. Miller receives a box of blue pencils from his secretary, Hilda Chavalier, at his farewell party last month. Blue pencil marks indicating desired changes in paperwork became a Miller trademark during his many years at the Refinery.

Retire—

Cont. From P. 1

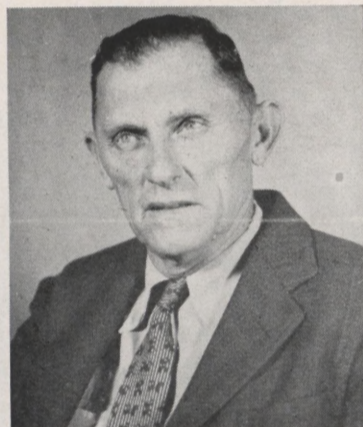
small farm near Oktaha, Okla. Harris came to work as a pipe-fitter helper.

Dunham started his Refinery career as a laborer and ended it with more than 21 years of service. He has plans to go into the real estate business now that he has retired.

Also retiring after more than 21 years of service is Lierman who started to work at the Refinery as a laborer. He had no immediate plans for any special retirement activity.



Randal E. Lee



Edwin B. Lierman



Joda L. Dunham

plier of general purpose synthetic rubber for automobile tires, floor tiles, and other rubber items manufactured in the West.

ball teams; tennis and golf tournaments; the annual picnic, and also operates the Shellwood recreation and picnic area.

Shellwood, which includes a new swimming pool opened late last summer, gives employees an excellent site for family picnics or larger get-togethers. The addition of this facility to the already outstanding athletic and recreation events gives SERA the most attractive program it has ever offered to members.

SERA—

Cont. From P. 1

A representative of SERA is available in each department to register new members.

All dues paid by SERA members are matched dollar for dollar by Shell. The organization sponsors all types of recreation activities for Shell employees such as dances; bowling, softball and basket-

CORRECTION

The Nov.-Dec. issue of the SHELLEGRAM stated that G. F. DeRidder, Chief Technologist at the Refinery had 25 years service. It should have been 30 years.

Safe Workers Are Good Workers

20 Years Service



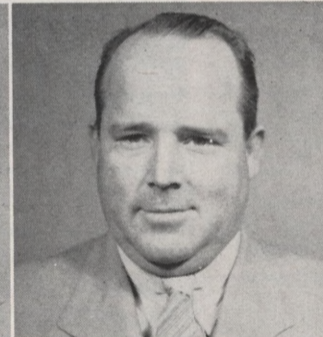
J. W. Alford
Dispatch. (Ref.)



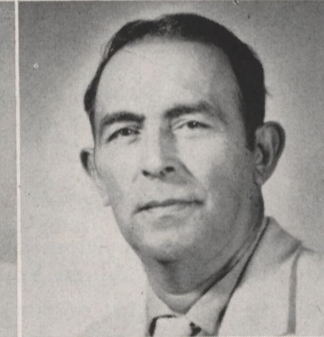
M. D. Burgin
Cat. Crack. (Ref.)



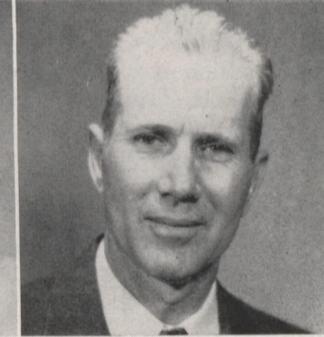
G. H. Cansler
Cat. Crack. (Ref.)



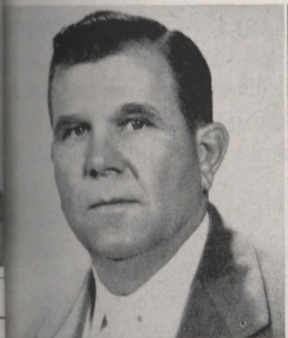
O. M. Gindratt
Eng. (Ref.)



Bernard Dehoyos
Eff. Cont. (Ref.)



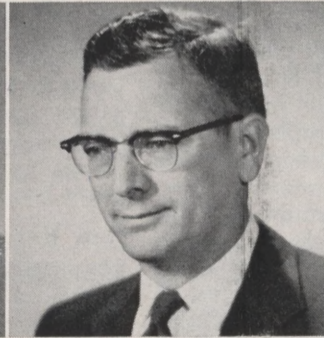
Lester Havard
Gas (Ref.)



C. H. Herring
Auto. (Ref.)



A. R. Hughes
Eng. (Ref.)



W. E. Jensen
Cont. Lab. (Ref.)



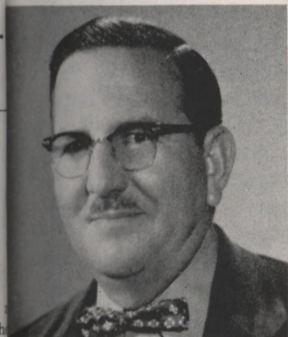
K. P. Kemp
Dispatch. (Ref.)



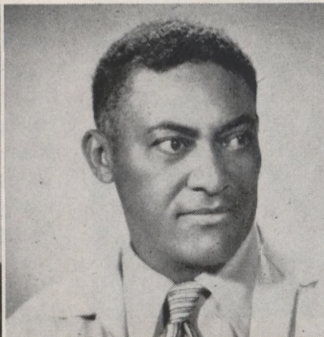
R. R. Lambert
Cat. Crack. (Ref.)



A. H. Loughridge
Eng. (Ref.)



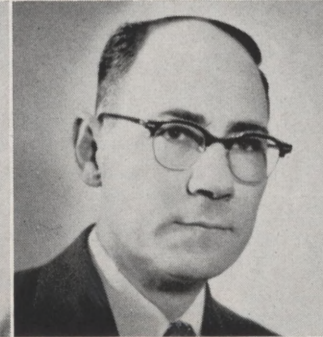
E. W. Love, Jr.
Eng. (Ref.)



C. J. Mitchell
Eng.-Field (Ref.)



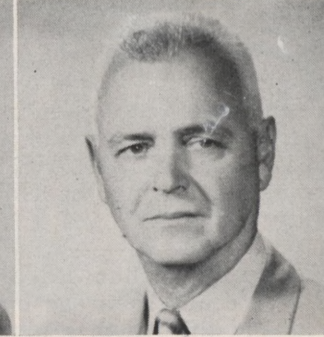
Monroe Moore
Eng.-Field (Ref.)



R. M. Patterson
Cont. Lab (Ref.)



A. G. Perrard
Eng.-Field (Ref.)



R. R. Sawyer
Eng.-Field (Ref.)



NEWS OF REFINERY PERSONALITIES

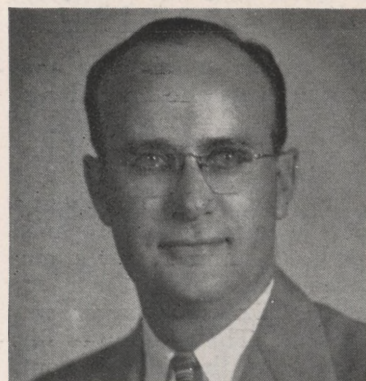
Researchers Present Papers

Two members of the Research Dept. presented papers in Boston at recent scientific meetings. Dr. R. H. Hunt read a paper on "Measurement of Fluid Catalyst Densities by Gamma-Ray Absorption" by invitation at the Tracerlab symposium. Dr. J. E. Gwyn presented a paper on his thesis work: "Effects of Atomization on the Performance of a Pilot Spray Dryer."

McDowell Is Mayor Pro Tem

P. G. McDowell, Dispatching, was recently elected mayor pro tem of South Houston. He is a member of the city council.

Deer Park Team Gets TV Plug



Nationwide television carried a plug for Deer Park's football team recently. TV cameras on Dave Garroway's morning show "Today" were scanning onlookers in the studio window when suddenly one lens focused on a sign boldly bearing the words "Yea Deer Park Texas, Go For State Championship."

Behind the sign, smiling broadly, was Harold Lewis, Manager of the Refinery Lube

Oils Department, an ardent Deer Park fan. Mr. Lewis is in New York assigned to the Head Office Manufacturing Department for a few months. Lennie Lambin is in charge of the Lube Oils Department until he returns.

Photographers Elected

Sam Davis and Al Locke, Refinery Photographers, were recently elected officers of the Society of Photographers in Industry. Davis was named president and Locke was chosen recording secretary.

Four Researchers in Little Theater

The roster of the Pasadena's Little Theater carries the names of four Refinery Shellites. The Research Lab is the working home of all four of the dramatic enthusiasts.

Wade Callendar, Dick Bartholomew, Ray Clerc and Bill Wright all have contributed to the success of "The Moon Is Blue," which was staged on Nov. 15, 16 and 17.

Mrs. K. E. Train, Mrs. R. N. Bartholomew and Mrs. W. L. Callendar have also given of their time to the Little Theater project this season.

Merry Lynn Morelan Attends Meet

Merry Lynn Morelan, daughter of Rex B. Morelan (Eng.) recently took part in the 11th International Allied Youth Conference at Buck Hills, Pa.

Goldstone Weds

F. P. Goldstone, Technologist in the Aromatics Dept., was married Dec. 1 to the former Lucy Virginia Newby of Houston. The wedding was held at St. Marks Episcopal Church. Mrs. Goldstone is employed at the University State Bank.

Marriage Rites Held

Cutting their wedding cake following their recent marriage ceremony at the Church of Christ in La Porte where Mr. and Mrs. Samuel J. Arnold. (Right) Mrs. Arnold, the former Miss Sherry Dayne Jones, is the daughter of C. L. Jones, Zone Foreman in the Engineering Dept. at the Chemical Plant. Arnold was employed in the Drafting Room at the Refinery during the summer of 1956. He is currently attending the University of Texas.

Accidents are the leading cause of death from age one to 35 and the fourth leading cause of death for all ages.



Refinery '56 Progress Marked By Construction, Safety Record

Progress in construction, production, safety and research marked 1956 as Refinery employees all pitched in to make the year a big success.

The start of two major construction projects highlighted the expansion phase of the year. Ground was broken in June for the new main office building and the research lab and office. Both modern, fully air-conditioned buildings are scheduled to be completed in mid-1957.

Super Shell with TCP made its debut at the Refinery in July when production of the higher octane gasoline got underway. Revisions at Dubbs No. 7 and 8 and the installation of Platformer No. 2 were important factors in the production of the new product.

The 2,700 men and women employees of the Refinery proved twice during the year they know how to obey safety rules and protect themselves and their fellow workers on the job. To every worker must go the credit for the marking up of one million consecutive safe man-hours twice during the year.

Two Safe Periods

Between March 6 and May 16 the Refinery chalked up 1,028,634 man-hours without a disabling injury. Shortly after this safe period ended,

in the Distilling area where three new solvents for the dry cleaning, paint and varnish industries will be produced, starting this spring.

A major project completed during the year and placed in operation was the river water supply system that brings in water from the Lake Houston reservoir. Before the new system was put into use early in the year, the Refinery depended solely on wells.

Pool Opened

The Shell Employees Recreation Association kept in step with progress with the opening of the new \$36,000 swimming pool at the Shellwood grounds. The pool was officially opened Sept. 23, attracting 550 swimmers the first day. Total Open House attendance that day was estimated by SERA officers at more than 1,200.

Those officers elected in mid-year to serve until May 1, 1957 include Dixon Kirk, Chemical Plant Instrument Shop, as President, and Fay Hilliard, Refinery Engineering, as Business Manager.

One of the major projects for SERA was the annual picnic, which was successfully held last year on May 26 at the Galveston County Park under the guiding hand of Pic-

a disaster control organization when on April 16 Manager John Tench sent the first She message on the new Civil Defense radio network which was designed to keep ship changing industries in touch with each other in the event of an emergency.

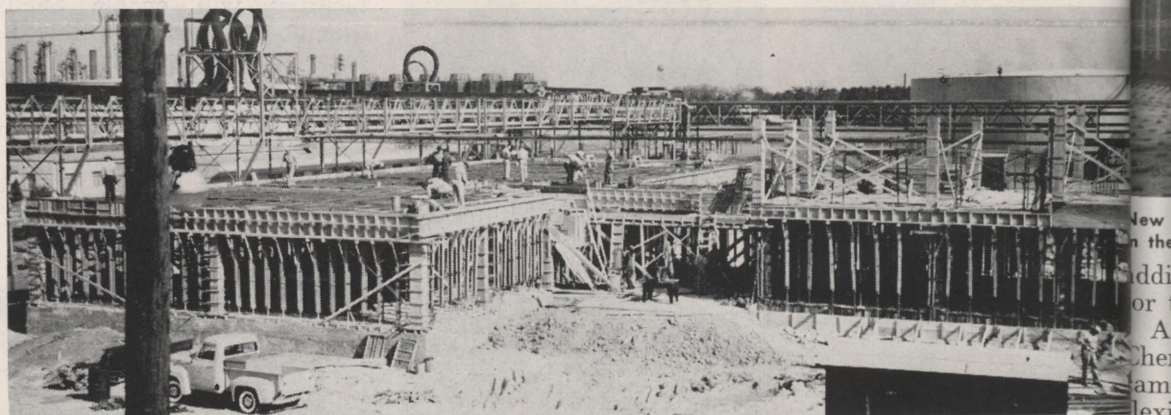
Mock Attack Held

Such an emergency came July 20 when both the Refinery and the Chemical Plant suffered "extensive damage" from theoretical nuclear bombing dropped in "Operation Alert." Fire Fighters exhibited their fine training when they answered tank farm imaginary blazes. Employees' families joined into the operation, being evacuated from the staff houses near the ship channel because of a pretended fire at dock No. 1.

The Refinery enthusiastically helped the rest of the industry report its progress to the nation during Oil Progress Week, Oct. 14-20. Jimmy D. Little, Shell Oil Company Vice President and World War flying general, was in Houston for the observance.

A number of Refinery employees were in the news for individual accomplishments.

Jack O'Neal reflected credit upon himself and the Research



The second story started to take shape on the new Research building as 1956 ended. Construction of the modern structure started in June last year.

Refinery employees went another 1,151,801 man-hours without a disabling injury. This second safe period fell between July 2 and Sept. 17.

Another example of cooperation and concern for their fellow man was given by the employees during October when the United Fund Drive quota was surpassed by more than \$900. Refinery employees contributed \$20,665.91 in the 1956 drive.

Meanwhile, members of the Refinery Research Lab were watching seven years of their research pay off at the Anacortes refinery. Success came in the development of a two-stage catalytic cracking operation that makes it possible to get a 15 per cent increase in the yield of gasoline from crude oil.

Another new product began coming out of the Wax Plant late in the year. It is a wax developed by the Research Dept. especially for use on sloping-top milk cartons where it must not crack under sudden temperature changes.

As 1956 ended, Construction was making marked progress

Chairman C. M. (Curnie) Wilson of the Refinery Engineering Dept. Some 7,000 persons attended the all-day affair.

Some 300 members of the Shell Employees Social Club, their families and guests enjoyed an afternoon of fun and good food Aug. 11 at the group's annual picnic.

The Refinery commissioned

New Refinery Supervisor



H. R. Neal
Foreman, Utilities

Lab by being awarded the Precision Scientific Award for Petroleum Chemistry by the American Chemical Society for his work in mass spectrometry.

Mason Elected

Gaines Mason (Thermostat Crack.) was elected President of the Deer Park School Board replacing W. A. Carpenter, Manager of the Distilling Dept. Carpenter declined another term after 21 years in the post.

J. M. Willard, Pipefitter in the Research Lab, was elected to a second term on the Galveston Park City Council.

A major change in Refinery management took place in December when J. L. Miller was transferred from his position as Superintendent - Operations to Montreal to be Refinery Manager. A. J. Wood, Chiroc Technologist at Wood Riverton was transferred here to replace Miller.

Overall, 1956 was an eventful and successful year for the Refinery—a year that fulfilled past promises and indicated an even greater 1957.

... IN 1956 Construction Highlights Chem. Plant's '56 Expansion Program

Last year marked the tenth service anniversary for the Houston Plant as a member of Shell Chemical Corporation. From its rather small beginning the plant has grown to be the largest in Shell Chemical Corporation's family. Further expansion occurred during the past twelve months as nine major construction projects were completed.

In P&R Department two production units were put into operation. The first was BPA-2, constructed to meet additional consumer demands for bisphenol-A, and as a source of phenol for the EPON® resins units.

During the past few years there has been an increased demand for the liquid variety of EPON resins. To meet it, EPON Resins Unit No. 3 was constructed. Besides providing the means to meet immediate demands the unit will supply

not come under the heading of manufacturing facilities, but are deemed just as necessary. The added space in the office building eliminated crowded conditions. The cafeteria offers the employees good food, pleasant surroundings, and far greater convenience.

History was made last year when ocean going tankers were used for the first time to transport glycerine from the Houston Plant to Seward, New Jersey. Months of planning and preparation were necessary before this system was put in practice. Now it has become routine.

New Shipping Methods

Improvements made toward the safe and efficient shipping of packaged EPON resins by boxcar proved highly successful. In place of loading boxcars by hand, the bags are stacked on pallets and loaded

efficiency. The first is a fire engine capable of extinguishing fires faster and from a greater range.

Tools and equipment are now being transported to shutdowns and major construction sites by a portable tool room. By using the portable tool room shutdown time has been sharply reduced.

Safety Record

Safety made the news this past year when the plant truck drivers were given a 100,000 mile safe driving award by the National Safety Council.

Refinery Aids Hungary Relief

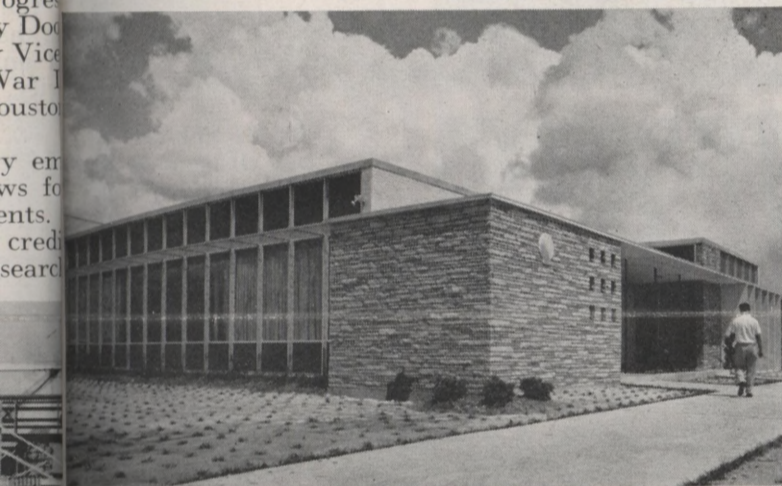
Refinery employees contributed \$570.40 to Hungarian refugee relief in a special Red Cross drive held just before Christmas.

The donations came in response to an emergency call issued by H. S. M. Burns, National Chairman of the American Red Cross and Shell Oil Company President. Refinery Manager John Tench brought the need to the attention of Refinery personnel with a letter addressed to all employees.

Who's New?

Dec. 2: Mark Wilson Pate, son of Mr. and Mrs. Calvin Pate, Electric Shop.

Dec. 4: Sherri Lynn Rowell, daughter of Mr. and Mrs. R. L. Rowell, Tech.



New Chemical Plant cafeteria, probably one of the most beautiful plant cafeterias in the world, has made lunch hours a real pleasure for Chemical plant employees.

additional production capacity for the future.

As consumers of Shell Chemical's EPON resins became more aware of its great flexibility they began requesting special types. To handle the demand the Product Development Unit was constructed. It is now supplying Shell Chemical's customers with numerous varieties of epoxy resins.

IPA Expansion

An expansion program set to increase the production of Isopropyl Alcohol was begun in October with the erection of a column designed for IPA production. The program affects four plants, A, H, M, and G. The IPA column was placed in A Department's, Distillation Area. Later four converters were put in place in M Plant, and in December Propylene column was erected in G-100 area.

As the Houston Plant expands in size and production facilities it must also keep abreast in techniques. In the Research Unit Operations Building are facilities to experiment with manufacturing processes. The Research personnel assigned to this unit will be constantly striving to improve on manufacturing methods now in use.

Added Office Space

The addition to the Main Office Building and the construction of a new cafeteria do

by a forklift truck. This method reduces loading time by more than half.

The next improvement was to place portable bulk heads in the cars to keep the pallets from moving around as cars are "humped" in switching yards. Recently another device replaced the bulk heads; called "car shrinkers."

The car shrinker now practically guarantees that the packaged EPON resins will arrive at their destination undamaged. It is constructed like any other bulkhead, but is backed up by a heavy springing device. When the car is bumped and the load shifts forward, the spring pushes the bulkhead in the same direction and keeps the cargo compact.

Civil Defense

Civil Defense was at the top of the list for the Fire and Safety Section. A radio warning system installed in the main gatehouse is providing the plant with an efficient way of transmitting or receiving calls for help in time of emergency.

Later in the year the plant participated in a national Civil Defense drill. This practice provided the plant radio operators and fire fighters the opportunity to check their know-how during an emergency.

New equipment purchased by the plant is bringing added

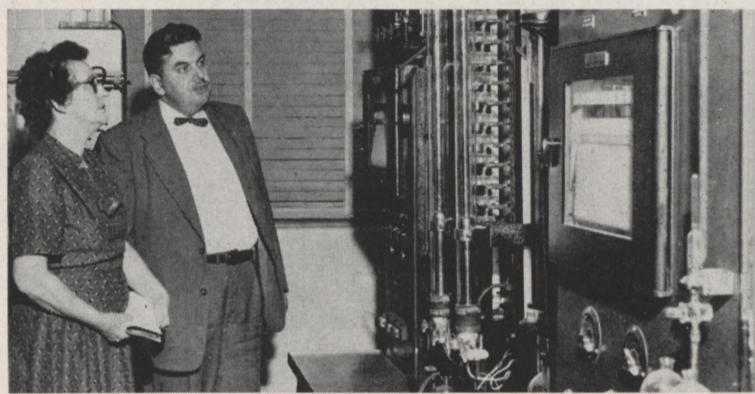
Chemical Plant HERE & THERE

School Teachers Visit Plant

Each year business and local schools participate in "Business Education Day." This is the time when business men and educators trade places for a day.

Taking over as school teachers this year were K. B. Field, Manager of the Treasury Department, and R. A. Brand, Engineer, in the Engineering Development Department.

Shown below are the teachers who visited the Chemical Plant.



V. W. Wilson, Chief Chemist, Laboratory Department, explains the uses of some of laboratory equipment to Mrs. M. C. Whipp, a general science teacher from Burbank Junior High School. This was part of plant tour.

★ ★ ★



Arthur Colvin, left, a general science teacher from Deady Junior High School has Chemical Plant accounting procedures explained to him by P. H. Sanders, Supervisor General Accounting, and L. A. Murphy, Chief Accountant.

Tallest Column Erected in G-100 Area

The Chemical Plant's IPA expansion program came nearer to completion recently as four converters and a propylene column were put in place.

The propylene column is the tallest in the plant, standing 151 ft. high. It will provide high-purity propylene.

Raising a column of this size poses several problems. One being that the column be brought into the plant facing in the proper direction, to eliminate having to move it unnecessarily. Plus the fact that moving a column of this size is a major undertaking.

The column's length proved to be somewhat of a transportation problem, requiring three flat cars to bring it to this

plant. H. J. Bettencourt and G. A. Laigle, Engineering Department, were responsible for erecting the tower. Wishing to make sure the column arrived in the right direction they contacted the Houston Rail Terminal, and gave them the flat car numbers and asked to be notified when the column arrived at the terminal.

In answer to their call the terminal reported to them that their records showed one of the cars in Opelousas, La., one in Baton Rouge, La., and the other in the shops being repaired.

To someone lacking a "cool head" it may have seemed that the column was now running around in three pieces. But, later reports cor-

rected the situation stating that they had been in the terminal all the time.

F. M. Stribling, Engineering Department, was assigned the job of putting the converters in place. They will provide additional diacetone alcohol, which in turn will provide more hexylene glycol, methyl isobutyl ketone, and methyl isobutyl carbinol.



Left, F. M. Stribling, Project Engineer in charge of converter installation in M Plant watches as one of the converters is hoisted into place. When completed the unit will house four converters which will aid in the production of DAA, HG, MIBK, and MIBC.



Chemical's tallest column begins its difficult climb toward the skies. It will produce propylene.

★ ★ ★ *T'Was the Season To Be Jolly* ★ ★ ★

Supervisors Party



Chow Line



Somebody Told a Funny

New Year's Dance



A Table Full of Fun



Panel of Experts?



Which Way Was the Line Going?



Let's Dance



Oops, Slipped



Now, Look at the Camera!

T
ploy
wor
than
cem
H
fite
was
been
fine
mor
H
erat
died
45.
for
V
itor.
had
Refi
thre

R. L.
C. L.

G. H.
G. M.
K. L.
Roy

W. H.
Ch

H. J.
R. W.
P. W.
G. M.
J. L.
D. E.
D. L.

J. F.
C. V.
M. L.
R. E.
W. G.
B. J.
J. H.

Pur
Job
Ge
finer
been
ing C
was a
ident
Me
all di
ries
Doris
from
chair

Urs
Uti
W
Utili
when
tires,
C. S.
the U
Ur
as Pe
the a
He v
man

Ok
value
state

In Memoriam

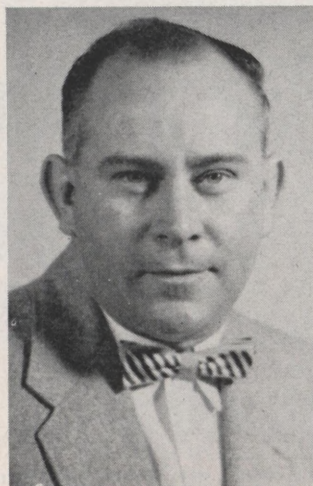
Three Refinery employees, all of whom had worked for Shell for more than 10 years, died in December.

Henry C. Langer, a Pipefitter, died on Dec. 8. He was 42 years old and had been employed at the Refinery for 17 years and two months.

Harry L. Tidwell, an Operator in Thermal Cracking, died on Dec. 9 at the age of 45. He had worked for Shell for 13 years and six months.

Willie Tryals, 32, a janitor, died on Dec. 21. He had been employed at the Refinery for 10 years and three months.

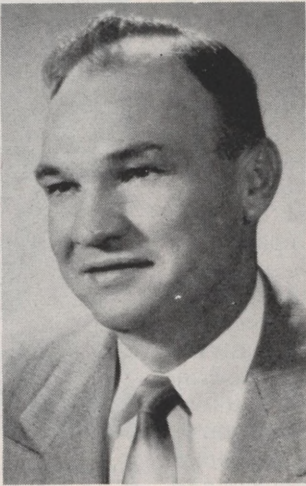
15 Years Service



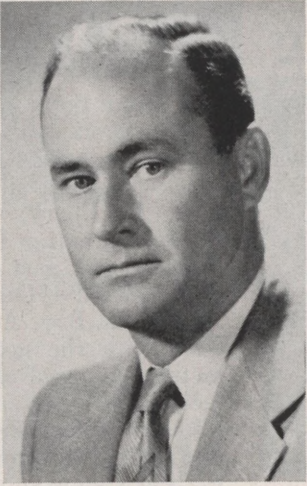
T. H. Bosse
Cat. Crack. (Ref.)



Chester T. Burns
Eng.-Field (Ref.)



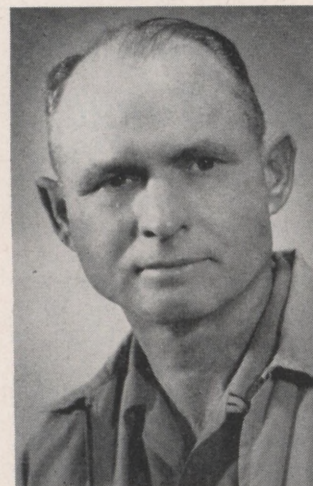
Wade L. Calhoun
Eng.-Field (Ref.)



W. F. Colwell
Eng. (Ref.)



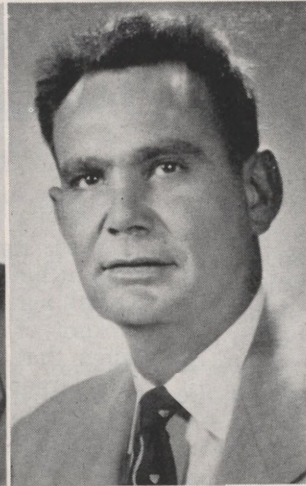
H. G. Creed
Eng.-Field (Ref.)



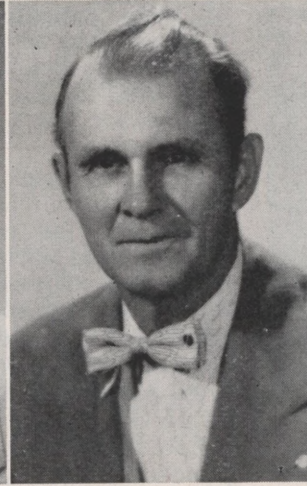
Earl E. Dunn
Dispatch. (Ref.)



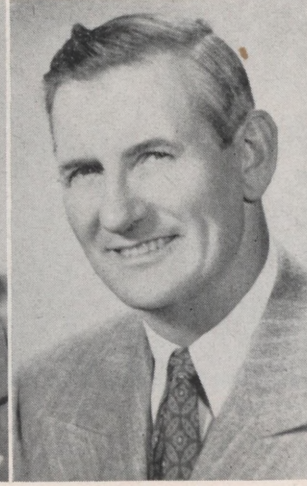
J. D. Hayslip
Lube (Ref.)



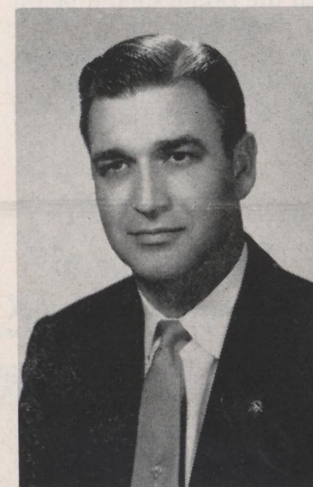
S. A. Hester
Eng. (Ref.)



Joe H. Hinton
Eng.-Field (Ref.)



W. F. Jackson
Eng. (Ref.)



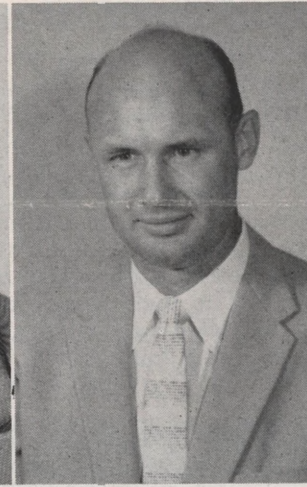
Tommy Jones
Control Lab (Ref.)



V. P. Loughery
Eng.-Field (Ref.)



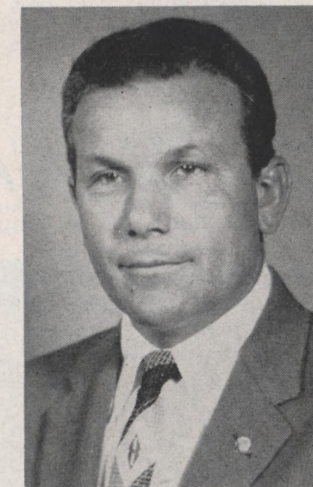
H. M. McLeod
Dispatch. (Ref.)



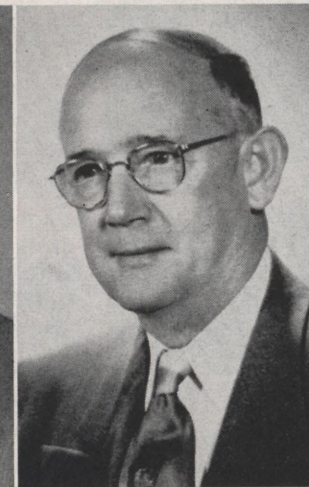
J. V. McNally
Eng.-Field (Chem.)



H. M. Miller, Jr.
Fire & Safety (Ref.)



J. E. Moulder
Eng.-Field (Ref.)



Frank J. Olexa
Eng. (Ref.)



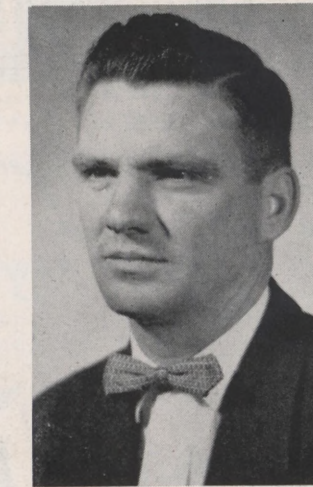
B. C. Parker, Jr.
Dispatch. (Ref.)



J. N. Parker
Eng.-Field (Ref.)



J. B. Reed
Eng.-Field (Ref.)



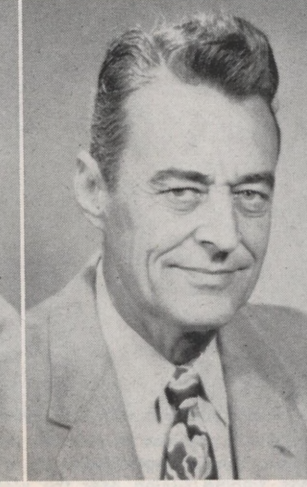
H. H. Townsend
Lube (Ref.)



C. D. Townsend
Eng.-Field (Ref.)



K. E. Train
Research (Ref.)



L. D. Wilkers
Arom. (Ref.)



D. E. Womack
Distilling (Ref.)



CHEMICAL

R. L. Saunder, Jr., Lab. Ass't.
C. L. Marshall, File Clerk

REFINERY

G. H. Lyles, Jr., Lab. Asst.
G. M. Alders, Jr., Lab. Asst.
K. L. Callihan, Nurse
Roy Barrett, Eng.

MILITARY LEAVES

W. H. Stewart, Jr., Res.
Chemist

10 YEARS REFINERY

H. J. Cannon, Eng.
R. W. Dunlap, Eng.-Field
P. W. Gudgell, Cont. Lab.
G. M. Neill, Treas.
J. L. Robinson, Res.
D. E. Van Pelt, Jr., Eng.
D. L. Price, Eng.-Field

CHEMICAL

J. F. Brackman, Opr.
C. V. Ferguson, Eng.-Field
M. L. Page, Eng.-Field
R. E. Robb, Eng.-Field
W. G. Robbins, Eng.
B. J. Waggoner, Eng.-Field
J. H. Ware, Eng.-Field

Purchase Discount Job Goes to Platt

George Platt of the Refinery's Drafting Dept. has been named Discount Purchasing Chairman for SERA, it was announced by SERA President Dixon Kirk

Members are asked to direct all discount purchasing inquiries to Platt at phone 436. Doris Knight, who resigned from Shell, was the previous chairman.

Ursprung Receives Utilities Promotion

W. E. Ursprung will become Utilities Dept. Foreman Feb. 1 when Frank Pemberton retires, it was announced by C. S. MacGregor, Manager of the Utilities Dept.

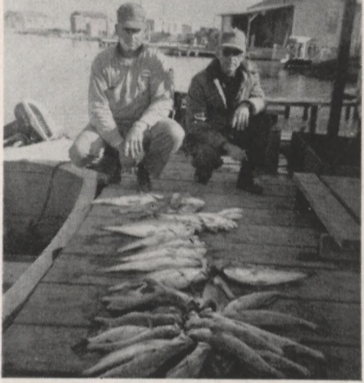
Ursprung has been serving as Pemberton's assistant until the actual date of retirement. He was formerly Shift Foreman in Utilities.

Oklahoma's oil production is valued at 90 per cent of the state's mineral production.

A. E. Curry Takes Part In Catching 252 Trout



Alvin Ernest Curry with some of the speckled trout caught by his father, A. E. Curry, Treating (Ref.).



Alvin Reuter, Livingston (left), and A. E. Curry, Treating (Ref.) with some of the 936 speckled trout caught by a group of eight fishermen in one weekend.

If you don't believe fish stories even when there are pictures to back them up, then you need to read no further.

A. E. Curry, of the Refinery's Treating Department, recently took part in an amazing weekend of fishing on East Matagorda Bay. And he came back with the accompanying pictures as proof of his fishing luck.

Curry and a fishing partner, Bill Pullen, Houston, hauled in 197 speckled trout one day and then went back on the water to get 55 more the next day, all of them weighing between three and five pounds.

Three boatloads of fishermen from the same camp accounted for 936 "specks" that weekend.

Curry reported the trout were hitting on anything he threw into the water—live shrimp, dead shrimp, spoons and small Mirro-Lures. He said they even went after a small piece of white cloth tied on his treble hook. However small plugs accounted for the larger fish.

Like to try your luck? The place is located on the bay between the bay island known as Dressing Point and Matagorda Peninsula.

TCP Team Tops Refinery Bowling

The TCP team was leading the Refinery Mixed Bowling league by a wide margin through the December bowling dates.

The league leaders had won 40 points and lost 16 compared to a 32½-23½ record for the second place Alkylation team. Two of the top three individual averages at that time belonged to TCP

members with K. Montgomery holding a 172 mark and J. Williams a 169 standard. But C. Stanberry of the Premium team was the best in the league with a 193 average.

During December, Stanberry rolled the best game and series with scores of 230-634. The high women's game was rolled by I. Myers, 212, while Vi Adams had a 502 for the top December series.



Graduates of the recent 40-hour Basic Supervisory Course are: (Seated left to right) L. F. Grove, Eng.; D. V. McKinnon, Stores; J. R. Hudson, Treas.; A. E. Krc, Research Lab; B. L. Jones, Research Lab; Jean D. Ament, Treas.; E. S. Metzler, Eng.; H. F. Tighe, Lube; I. B. DeWalt, Eng.; Alfred Tarver, Therm. Cracking; R. B. Morelan, Eng., and F. J. Long, Distilling. Standing are P. E. Slack Jr., Training Assistant, and J. P. Thomas, Training Supervisor.

Employees Asked To Indicate Interest in Bigger Rifle Range

Are you interested in a big-bore rifle range as a SERA activity?

If so, now is the time to show it by signing up as a potential participant. The main backers of this move for a range that will accommodate guns larger than .22's and pistols are A. L. McLain (Cat. Crack., Ref.) and Les Bassinger (Lab. Chem.).

They have presented their cause to the SERA Executive Board and have received promises of consideration in the budget, if enough persons show an interest in the activity.

Persons at the Refinery who are interested in such a range are asked to sign a roster on

the SERA bulletin board in the Clock House. Chemical Plant employees may contact Bassinger at 387.

Right now, the two men are engaged in a search for 10 to 20 acres of land that can be leased or purchased at a reasonable price. McLain pointed out that such an area would have to have a "dead" background for the range to assure that stray bullets didn't hit persons or valuable property. He said the range should be up to 300 yards long.

A small bore range is now in use by SERA members, but it will not accommodate jacketed bullets, McLain said.

Planning Match Play Golf Tourney in '57

J. W. Peters, Chairman of golf activities for the SERA, has announced tentative plans are being made for a match play tournament to be held later this year.

He said more information will be announced later on this event. The first 1957 handicap tournament was being held as the SHELEGRAM went to press this month.

In the December tourney, Hugh Granberry (Ref. Welding Shop) took top honors in the low handicap group with a net 61. He shot a gross 74 and carried a handicap of 13 strokes. W. Tanner (Chem. Eng.) was runnerup with a net 62 made up of a gross 82 and handicap of 20.

The high handicap winner was S. J. Lingar (Chem. Electric Shop) with a gross of 91 minus a 23-stroke handicap for a net 68. Second spot was taken by F. N. Deaton (Chem. Pipe Shop) with a net 69. He took 23 strokes off his gross 92.

New Mark Set In Engineering

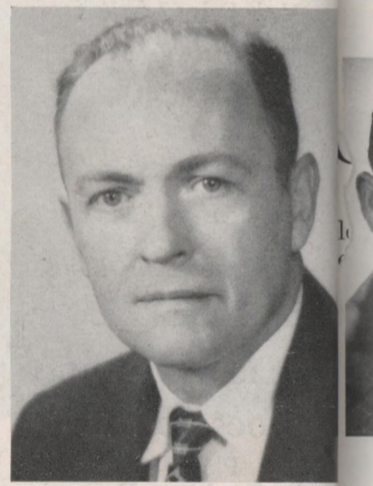
The Refinery's Engineering Field Dept. recently completed a record-breaking five months of work without a chargeable disabling injury.

Refinery Manager John Tench complimented all employees of the department upon the outstanding accomplishment of working 979,200 safe man-hours. He said in a letter to all workers, "This is a splendid accomplishment for such a large group of men whose work covers every phase of physical and mechanical activity."

The letter said that the personnel of the department demonstrated that people work safely when they make up their minds to do so.

Safety Pays BIG Dividends

25 Years Service

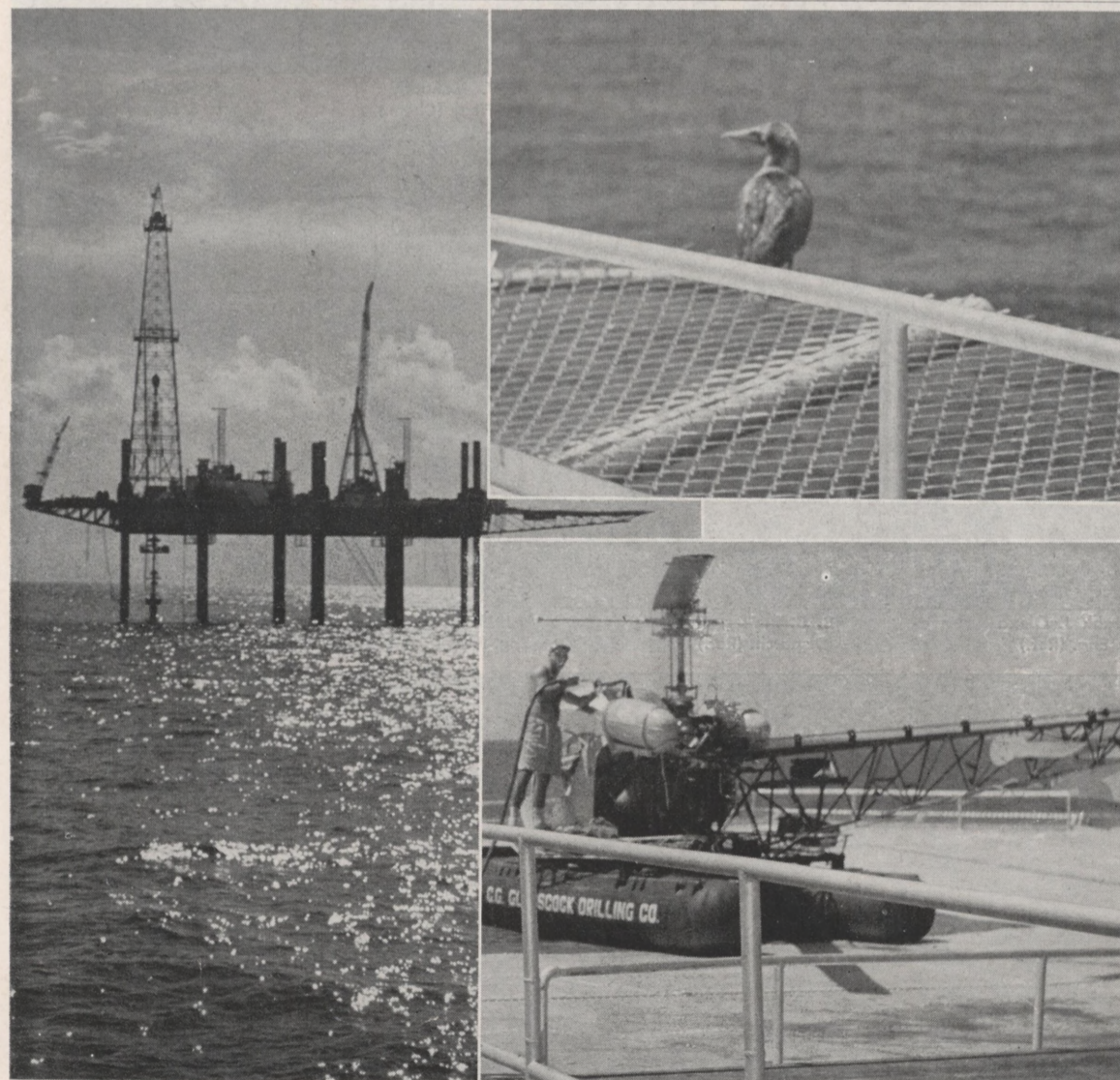


C. E. Cassidy
Cont. Lab. (Ref.)

Do You Have News?

The SHELEGRAM needs news about you and your family.

Have you news of a wedding, new baby, outstanding fishing trip or a special accomplishment? If so, tell the SHELEGRAM about it.



The big mobile drilling platform "Mr. Gus," provides a welcome refuge for two very different kinds of "birds" 63 miles out in the Gulf of Mexico off Galveston. The helicopter takes on a load of fuel between trips while the feathered bird just stopped off for a rest and rations, finding fishing near the platform excellent. "Mr. Gus" was drilling for the Shell Oil Company in 93 feet of water. It is owned by the C. G. Glasscock Drilling Company, Corpus Christi.

SHELL OIL COMPANY
P. O. Box 2527
Houston 1, Texas
Return Postage Guaranteed

Sec. 34.66 P. L. & R.
U. S. POSTAGE
PAID
Deer Park, Texas
Permit No. 1