

COLTHART



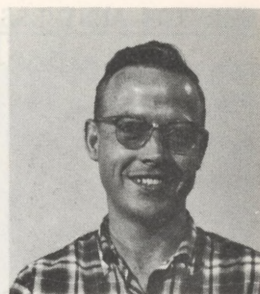
DE CARDENAS



GRAY



HOVORKA



HUGGER



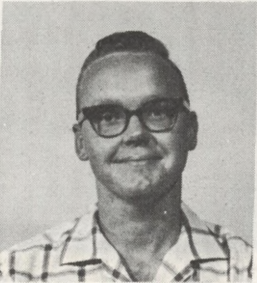
LEVITCH



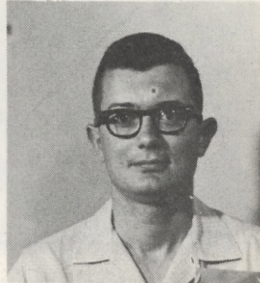
OTT



OUBRE



ROBERTSON



TILLER

TEN EMPLOYEES STUDY AFTER HOURS
IN PRINCIPLES OF MANAGEMENT COURSE

Ten Houston Refinery and Research employees recently completed a 12-session "do-it-yourself" after-hours study course held at the Hotel America in Houston.

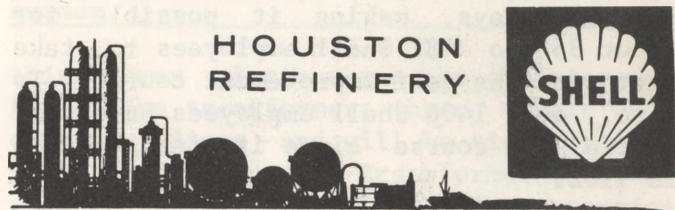
The ten participants were J. D. Colthart, E. DeCardenas, J. H. Gray, R. B. Hovorka, B. A. Hugger, R. N. Levitch, A. F. Ott, C. L. Oubre, C. E. Robertson, and M. A. Tiller.

Purpose of the course was to provide understanding of basic principles of management and to encourage self-development and coaching of subordinates. The 12 two-hour sessions covered such topics as the nature of a business enterprise, the role of the manager, line and staff relationships, the function of planning, leadership, performance appraisals and discussions, motivation and incentives and innovation in a business organization. Each of the two-hour "class" sessions required approximately three hours of pre-class preparation. The sessions were held after

(Continued on Page 2 - See COURSE)



SHELLEGRAPH



No. 333

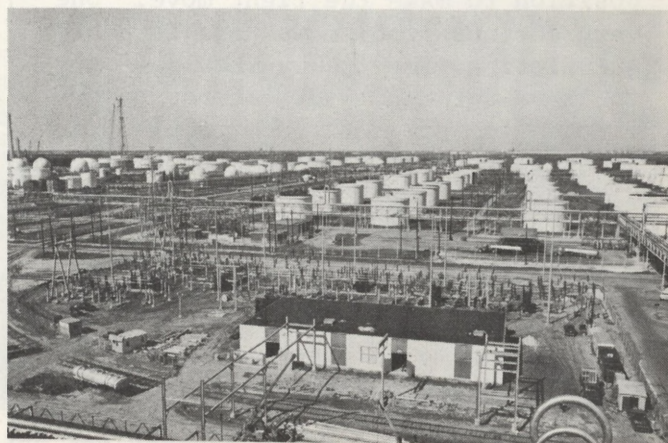
Friday, April 25, 1969

NEW ELECTRIC SUBSTATION NEARS COMPLETION
COULD SUPPLY POWER FOR 600,000 FAMILIES

Every time you come or leave from work you pass a huge complex of aluminum pipes, tall poles and large black metal containers, surrounded by a chain link fence. To the old hands at the Refinery this sight is not unusual because they recognize the project for what it is, but to the newcomer the sight of a new electric power substation is somewhat of a mystery.

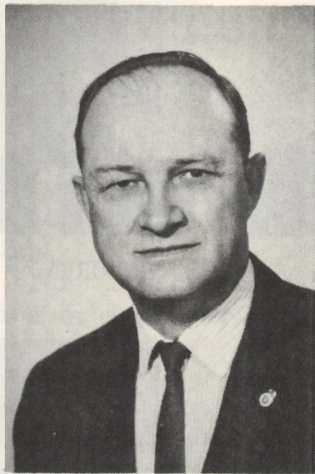
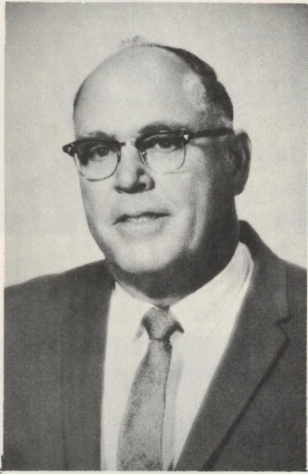
With the expansions now underway in both Refinery and the Chemical Plant, it became necessary to increase the Refin-

(Continued on Page 3 - See SUBSTATION)



THE CHANGING SCENE---The photo at left is the "before" of the site of the now nearly completed main electric power substation by the Refinery entrance road, while the picture at the right could be the "after" scene of the same area. For more pictures of the construction of the new power station, turn to page 3.

SERVICE ANNIVERSARIES



40 Years
J. F.
BISHOP
Utilities

30 Years
J. C.
MILLER
Eng. Field

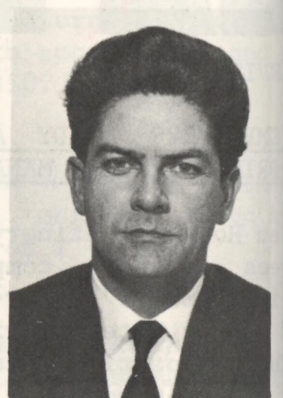
25 Years
V. E.
SMITH
Eng. Field

C. K. COLLINS NAMED REFINERY SUPERVISOR
B. Z. O'BRIANT APPOINTED FOREMAN

COURSE - Continued from Page 1

working hours, every other week, and there were usually 12 to 16 participants per course.

Employees from other Houston area Shell locations also participated in the course and there were actually three courses in operation--meeting on Tuesdays, Wednesdays and Thursdays, making it possible for about 36 to 48 Shell employees to take part in the self-improvement course. To date, over 1400 Shell employees have completed the course since its inauguration in 1962.



C. K.
COLLINS

B. Z.
O'BRIANT

HELP WANTED

Many persons report traffic violations which occur in the plant and request that action be taken to correct such situations. Unfortunately, like the public highway situation, this is not a simple matter to control, since the cooperation of every individual, both driver and pedestrian, is essential to maintain safe traffic on our Refinery streets. We have provided street markers and stop signs. We should observe defensive driving and walking habits. Always think, drive, or walk in anticipation that the other party may do the wrong thing, and that you will be in a position to make the right move. One very serious problem we have is haste at quitting time. Why should we try to save or gain 30 seconds or one minute to get out of the plant in order to get to our cars and sit for 5 to 10 minutes in long lines of traffic on the highway? This only exposes us to an injury in the plant before we get into the highway traffic jam. No one man or even a group can correct this situation. We need the help and cooperation of every individual to observe calm and orderly practices when walking or driving. Help us to protect yourself.

SAFETY DEPARTMENT

Manager Engineering Field I. S. Lark announced recently the following staff appointments.

C. K. Collins has been appointed for temporary assignment as Refinery Supervisor, effective April 21, 1969. He joined Shell at the Houston Refinery April, 1935, as a General Helper in the Engineering Field Department. He assumed the position of Operations Foreman in the Distilling Department in November, 1964.

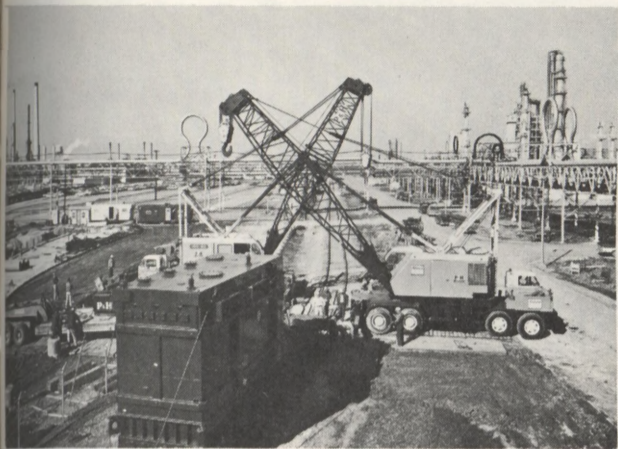
B. Z. O'Briant has been appointed Engineering Foreman, effective April 21, 1969. "B. Z." joined Shell at the Houston Refinery in May, 1948, as a Boilermaker Helper in the Engineering Field Department. He became a Boilermaker No. 1 in April, 1955, and assumed the position of Safety Inspector in the Safety Department in January, 1968.

SHELLEGRAPH

Published by Shell Oil Company for its Houston Refinery and Houston Research employees at Deer Park, Texas 77536.

P. H. FISCHER---Editor

Reprints allowed only by request. To submit news and photographs, call extension 541 or send material to Room 103, Main Office Annex.



138,000 VOLTS --- One of the giant 138,000 volt transformers for the new substation rests on a railroad flatcar as two heavy-duty cranes move into position to unload the 150-ton piece of equipment. The cranes placed the transformer onto the flatbed truck, at left of transformer, which carried it to the transformer's foundation.

SUBSTATION - Continued from Page 1

ery's electric power input potential. The present Refinery and Chemical Plant main substation has a maximum capacity of 75,000 kilovolt amps (KVA) and is fed from Houston Lighting and Power Company by two 69,000 volt lines.

Initially, the new substation will include 380,000 KVA of transformer capacity and will be fed from two 138,000 volt lines. It will have a total future capacity of 633,000 KVA requiring one additional line from the power company. This is equivalent to supplying the average electrical power requirements for over 600,000 families.

When the station is energized in May, it will begin to supply power to the Chemical Plant. The balance of existing Refinery and Chemical Plant loads is scheduled to be supplied by the new substation in November, 1969. After the new station goes into complete service, the old 69,000 volt substation will be dismantled.

There are several unique things about



EASY DOES IT--The two large cranes slowly, and inch by inch, lower the massive 138,000 volt transformer onto its foundation. The transformer is one of two initially installed at the new Refinery main electric power substation. Three more such transformers are scheduled to arrive this summer.

this power plant which are of interest. All of the transformers have double secondary windings and will be tied together such that any one transformer can fail without interruption of the power service to the plants.

The ten lightning bayonets, each 83 feet tall and 17 inches in diameter at the base, provide lightning protection for the outdoor substation structure. The station is designed to withstand hurricane winds of up to 130 miles per hour.

The substation building houses all 12 KV switchgear, current limiting reactors, and other related equipment. The relay and control panels have approximately 7,000 wiring connections for internal and external wiring.

Project Engineer for the new main electric power substation is L. C. Tuggle.



ELECTRIC FOUNDATION---The nearly completed foundation and "ground work" for the Refinery's 138,000 volt substation is illustrated in the picture above. The station is now nearing completion with the first power scheduled to be supplied to the Chemical Plant in May. Late this year existing Refinery units are to be hooked up to the substation, at which time the existing 69,000 volt main substation is to be dismantled.

CLASSIFIEDS

FOR SALE

3 Siamese kittens - 1 female; 2 males.
\$7.00 each.
Telephone - 477-3468

1964 Ford Pick-up, series 260 with V-8 engine, air, radio, heater. Good condition.
\$650.00
Telephone - HU-7-3056

1955 Chevy 1/2 ton Pick-up, V-8 Custom cab - \$150; Kelvinator refrigerator - \$20; 348 cu. in. Chevy engine - \$25.
Telephone - WA-3-4995 after 5:00 p.m.

1963 Cadillac 4-Dr. hardtop, fully loaded, extra clean, air, power, etc.
\$800.00
Telephone - 946-7946

14,000 BTU Fedders Air Conditioner. Used only three weeks. Still in warranty.
Telephone - 479-5656

Used air-conditioning condensate coil, 22" x 34 1/2" x 4 1/2", with freon storage tank. Make offer.
Telephone - 465-2618

Used red, Schwinn, girl's 24" bike.
\$10.00
Telephone - 465-2618

1968 Chevrolet 1/2 ton Pickup, V/8, fleet-side, long wheel base.
Telephone - GL-8-1378

AKC registered German Shepherd puppies. 7 weeks old, wormed, Rin Tin Tin and Longworth blood line.
\$50.00
Telephone - GR-7-2202

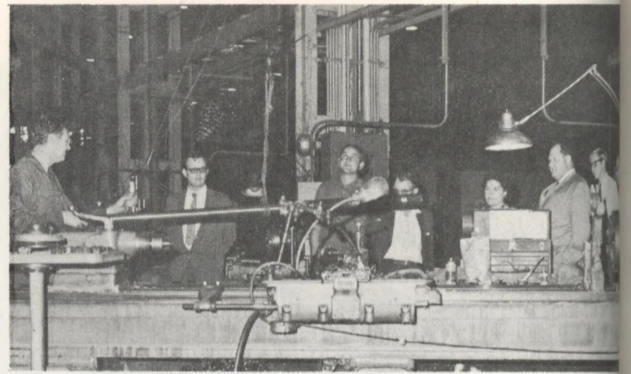
1967 Triumph TR4A. Excellent condition, new tires, 4 cylinder, 4-speed transmission.
Telephone - GR-2-8143

Used tires: 1 - 7.50 x 14; 1 - 7.00 x 14 tube type tires, lots of tread left for work car. \$5.00 each.
Telephone - 944-1965 (5 to 9 p.m.)

Used Emerson electric motor, 1/3 h.p., 2-speed - 1725/1140 rpm; 115 v, 60 cycle, 5.4 amps. In very good condition. Runs good. \$10.00.
Telephone - 465-2618

Squirrel cage blower, 16" x 13", with GE 1/2 h.p. electric motor, 1725 rpm, 115/230 v, 7.8/3.9 amps. In excellent condition, ideal for cooling your hunting or fishing cabin or as a replacement blower.
\$20.00
Telephone - 465-2618

Spirited 3-year old bay gelding. \$100.00,
Telephone - 471-1618



VOCATIONAL TEACHERS---A group of vocational education teachers and counselors from the Spring Branch Independent School District toured the Refinery on Monday. Here they observe a machinist at work in the Refinery's Main Shops Building. In addition to the tour of the shops and plant, the visitors heard a presentation by H. J. Estes, Manager Economics and Scheduling, on the subject of "Refining Processes." R. N. Pitman, Engineering Services, second from right, served as guide for the visitors on their trip around the Refinery.

FOR SALE

1 used in/outside 2' x 8' Hollywood sliding door with sliding window and screened upper half; auto closer included; also door frame; good for cabin or utility building.
\$10.00
Telephone - 944-1965 (5:00 p.m. to 9:00 p.m.)

Surfboard - Hawaii - 9' 2"; excellent condition. Best offer up to \$100.00.
Telephone - 473-3743

4' x 6' trophy case - \$8; vent hood - \$20
3 mowers - \$15-\$30.
Telephone - GR-2-5988

Tandem two-horse trailer in good condition.
Telephone - 473-4117

1961 Dodge Seneca - 4-Dr., V/8, automatic. Good transportation.
Telephone - 479-2703

Nobleat clarinet made by LeBlanc, good condition.
\$100.00
Telephone - 471-1411 after 4:00 p.m.

END OF THE SHORT DAYS

This Sunday, April 27, 1969, marks the beginning of Daylight Savings Time for the next months. Officially, DST goes into effect at 2:00 a.m. Sunday morning but since most of us will not be awake at that time, we can set our clocks forward one hour before going to bed Saturday night and still be on time Sunday morning.