

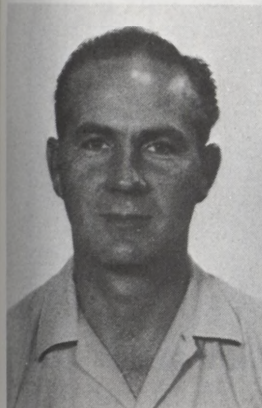


# Shellegraph

Houston Refinery

Vol. 37, No. 37

Friday, September 22, 1972



Bitner



James



Clyde Brooks and Lee Sweeten go over maintenance time in a computer print out. The volumes of cards on each employee, which were used before new system, are on desk.

## TIMEKEEPERS AIDED BY COMPUTER IN POSTING FIELD, STORES HOURS

Trying to keep track of several hundred employees in a large plant can be a tremendous job for a timekeeper who is responsible for posting manhours, overtime reports and overtime call out lists.

Volumes of cards and reports on each man's activities during each workday must be kept so that each will be paid correctly at the end of each pay period. Lengthy lists for daily overtime reports are also prepared.

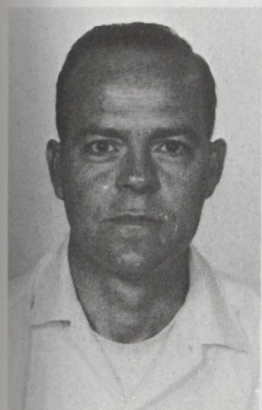
The Timekeepers in Engineering Field, Lee Sweeten and Clyde Brooks are kept busy most of each day entering notations on manhours, adjusting time and keeping track of overtime in large ledgers which contain cards on each craftsman. After consultations between Engineering Field management and the data processing group, a new procedure for overtime reports has been developed.

As in the past, each foreman for the crafts and Purchasing Stores is responsible for filling in punch cards for each man in his section and submitting these to the timekeepers each day. The timekeepers in turn sort the cards and send them to data processing where a computer takes over. Simplified printouts are produced each day for the overtime call out list, the daily overtime report and daily labor deviations which indicate if an employee is on vacation, off sick or away from work for any reason.

A composite of daily maintenance time reports is made once a week and submitted to hourly payroll.

Engineering Field employees worked with the new procedure during two months to

(Continued on Page 2.)



Shows



Staton

## PROMOTIONS LISTED FOR 4 MEN, BITNER, JAMES, SHOWS, STATON

Four men have been promoted in their respective departments.

Bill Bitner, Inspector, Engineering Field, has been named a Senior Inspector. He joined Shell in 1953 as a General Helper in the Engineering Field Department. After entering the Electrician craft, he became a No. 1 craftsman in 1966. In 1969 he was named an Inspector in Engineering Services and consequently served in the Expansion-Construction Department before moving to Engineering Field in 1971.

T. G. James, Lab Technician, Petroleum Chemistry and Catalysis, has been named a Senior Lab Technician. He began working for Shell as a Laboratory Assistant in the Research Laboratory in November 1968.

F. I. Shows, Lab Technician, Petroleum Chemistry and Catalysis, has also been named Senior Lab Technician. He joined Shell in 1967 as a Laboratory Assistant.

B. P. Staton, Inspector, Engineering Field, has been named Senior Inspector. He began his Shell career in 1968 as an Inspector in Engineering Services. In 1970, he transferred to Expansion-Construction and to Engineering Field in 1971.

**PURCHASING STORES HOLDS ANNUAL SAFETY DINNER PARTY AT RESTAURANT**



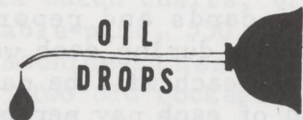
At the Sirloin Inn dinner were Mr. and Mrs. J. B. Davis, Fred Helleman, Marvin Adams, and Mr. and Mrs. Walter Shaw.



Mr. and Mrs. Ivan DeWalt were among guests.



Mrs. Al Eaton and Mr. and Mrs. Doug Meaden talked before dinner.



Donna Dorflinger, 12-year-old daughter of Cliff Dorflinger, Senior Employee Relations Assistant, has received an academic excellence award for the second time at Southmore Intermediate School. An eighth grade student, Donna received the award for having an "A" average in her studies. Only 17 students received the awards this year.



Donna plays the piano, sings and enjoys outdoor sports in her spare time.

\*\*\*

Becky Coleman knows firsthand the services provided by a United Fund agency. Becky is 3 years old and is blind and afflicted with muscular dystrophy. She is a client of the Lighthouse for the Blind and the MD center. The step granddaughter of Claude Minton, Sergeant, Employee Relations, she was recently featured in an ad which appeared in area newspapers saying, "Becky and her buddies want you to know what they did with your contribution to the United Fund last year. They learned to find their way alone. Your money goes to the Lighthouse for the Blind and the 42 other agencies..."



Mrs. Marvin Adams, Mrs. J. T. C. Jordy, Mrs. E. L. McKnight, and pensioner Al Eaton exchanged tidbits of news.

**TIMEKEEPERS  
(Continued from page 1.)**

put it into operation. Problems had to be solved in the system in order to convert hours to hours charged, adding comments in the runs, and producing a weekend schedule for overtime for each craft.

It is estimated that these overtime reports can now be turned out in half the time as the previous procedure.

## JA ACTIVITIES UNDERWAY AS COMPANY ADVISERS ORGANIZE SHELL NIGHT

Junior Achievement activities are underway and Shell Chemical and Shell Oil advisers will hold organizational meetings September 25 with students from Pasadena, South Houston and Deer Park School Districts.

Ken Braud, Chemical, and E. M. Rogers, Refinery, are chief advisers for the Shell night at the Pasadena JA center. This is the second year Shell is participating in the committee advisory system. Under this plan, several JA companies are formed and sponsored by one or two companies and the entire JA center is turned over to that group for one night a week.

The five companies will meet on Monday nights for two hours during the school year. The coordinating advisers, or chief advisers, will work with the company presidents and coordinate the efforts of the other advisers on these nights. This arrangement gives specialized guidance to the achievers, but at the same time gives them more responsibility.

Junior Achievement is a well-known program which teaches teenagers about the American economic system by allowing them to establish, manage, and operate their own miniature businesses. Local business and industry support the program and supply adult leaders to help the students in their ventures.

Chemical Plant advisers include W. F.

Lemons and J. W. Nelson, Treasury; J. W. Hurley, Purchasing; J. T. Ward, Light Olefins; Jeff Slotter, Shipping; L. R. Vaughn and T. Turner, Maintenance Engineering.

Advisers from the Refinery are Ray Crawford, George Stanfield, Ray Boyd, Ben Stastny and Lee Sweeten, Engineering Field; Kirby Henry, Clark Callihan and Jim Woodward, Treasury; D. A. Butler, Technological; and L. T. Whitney, Engineering Services.

## RIFLE CLUB CAN OFFER WHOLESOME ACTIVITY FOR MEMBERS, FAMILIES

Proving that a rifle club can provide entertainment for the whole family, 15-year-old Donna Kay Penland has become a real sharpshooter walking off with a few medals while having fun. Donna, daughter of L. F. Penland, Refinery, participates in the Big Bore Rifle Club matches on her dad's membership. Using a 243 Winchester, she took the benchrest event at 200 yards and outshot her father, among others in a recent match.

Another Shell offspring, Mike Rusch, son of Chemical Plant pensioner, Bob Rusch, won second place in the position event last month.

Bob Rusch, who is vice president of the club, says the next match will be held Saturday, October 7 at the rifle range on Red Bluff-Genoa Road. The Rifle Club has some 150 members enrolled and more are welcome. Member's families may participate in club activities. A \$4 initiation fee is charged and annual dues for the year beginning October 31 are \$3.

At the recent annual meeting, election of officers was held and a local hunter presented a film and slides on a recent African safari. Meetings are held periodically throughout the year and the monthly shooting matches permit gun enthusiasts to practice and compete with compatible rifles.

The classes consist of the benchrest event for 24 caliber and up, 5 shots at 100 yards, and the position event which is for 24 caliber and up, any sight, 200 yards, 10 shots from a prone position.

New members who can give additional information are president J. W. Mitchell, home telephone: 472-1412; vice president, R. D. Rusch, 946-1579; secretary-treasurer, J. W. John, 472-8972; executive officer, K. C. Walker, 472-7306 and range officer, L. F. Penland, 473-2268.

## PROVIDENT FUND NEWS

The following are the Provident Fund valuations:

### Equities Fund

September 5, 1972 - \$2.887

### Shell Stock Fund

August 1972 - \$47.143

## D. R. HULL TO TRANSFER TO ICS AS SUPERVISOR COSTS AND BUDGETS

D. R. Hull, Senior Accountant, Economics and Scheduling Department, has been transferred to Information and Computer Services, Technical Computing Center, as Supervisor Costs and Budgets.

The move was effective September 16 and was announced by the Refinery Manager.

Dave, who holds a B.B.A. degree from Baylor University, joined Shell in 1966. He transferred to the Refinery to E&S from Shell Pipe Line in November 1971.



## LINDA SMITH MOVES TO RESEARCH

Linda Smith recently transferred to the Deer Park complex in another Research consolidation move. A member of the Petroleum Processing and Engineering Department specializing in asphalts, she transferred from Oakland by way of the Bellaire Research Center.

Linda holds a B.S. degree from the University of California (Berkeley). She and her husband, David, live in southwest Houston.



## CLASSIFIEDS

FOR SALE

Buick, 1965 LeSabre, 4 dr. hardtop, 68,000 proveable miles, power steering, brakes, a/c, AM-FM stereo, excellent condition, very clean, \$850.  
Telephone: 481-4767

1970 VW, air, slide roof, AM-FM radio, \$1395.  
Telephone: 333-2068, Ext. 128 Mon-Fri

Dining room furniture--French provincial table & 4 chairs w/ padded cushions, china cabinet. Excellent condition. Also Fr. provincial commode table.  
Telephone: 645-1155

1970 Yamaha 350 cc street bike, helmets included, excellent condition. \$550 cash.  
Telephone: 946-1604

350 Honda 1971, like new, loaded, \$750.  
Telephone: 472-5942

1965 Chev. Impala 4 dr. ht., \$150 as is.  
Telephone: 944-5383

Electric stove with 2 Teflon lined ovens, deluxe, \$230. KitchenAid portable dishwasher. Both very young and avocado.  
Telephone: 469-0863

Lady Kenmore portable dishwasher. \$50.  
Telephone: 946-1981

1968 Mercury Monterey, Tudor, hardtop, power, air, radio, tape deck \$895.  
Telephone: 672-9631

'71 Capri, 1600 cc, 4 speed, air, AM-FM stereo, green, black vinyl top, \$1595.  
Telephone: GR 3-4219

8N Ford tractor, extra pull gear--good condition. \$675.  
Telephone: 472-5942. Out of town on weekend

Twin maple bookcase headboards. \$25.  
Telephone: 479-2703

1972 Toyota Celica ST, excellent condition, 6 months old, mags & air.  
Telephone: 479-2500 or 477-5160 after 5

Freezer--20 ft. Amana, upright type, cost over \$600 new. Works perfect, now in use. \$175 or best offer.  
Telephone: 433-9522 mornings or weekends

Black & white sofa bed, \$100. Gibson refrigerator, 1970 model (white), icemaker, \$300.  
Telephone: 424-4316

GE 1972 model with icemaker, \$500. Green Stratolounger, \$50.  
Telephone: 424-4316

FOR RENT

2 bedroom--6 room--home, close to schools & shopping, unfurnished, Deer Park, \$150 a month.  
Telephone: 479-2261

Unfurnished brick house, 3-1½-1, central air & heat, carpets, fence, near IH 45 & Gulf Bank, first time rented. \$175 month & \$100 deposit.  
Telephone: 473-6503

WANT TO BUY

1967 Belvedere or Coronet or Malibu.  
Telephone: 479-2241

FOUND & STILL UNCLAIMED

Pair of men's Mr. Levis slacks, size 34-35. Found in Training Room. Claim at Shellegraph office.

**SURFACE AGENT USED TO STOP GREASY SKID STUFF ON ROADWAYS**

A filled epoxy resin-based surfacing composition has been used successfully in the United Kingdom to reduce automobile skidding accidents by 50 percent.

For the last few years this epoxy-based composition has been used almost exclusively in England. One company now attempting to develop a market in the United States using Shell technology is Adhesives Engineering, which markets the product under the name of Coneresive Epoxy Asphalt Chip-seal.

Shell Chemical Company is the major supplier of EPON(R) Resins to Adhesives Engineering.

Ten years ago Shell International Research developed the epoxy composition. The epoxy based adhesive is sprayed on asphalt road surfaces along with chips of bauxite which are from 1/4 to 1/8 inch in size.

This forms a durable, coarse surface on roads which tires can grip better during wet weather to prevent dangerous skidding.

Brian Carr, a chemist formerly with Shell International who helped develop the product and who is now a consultant to Adhesives Engineering, says that the advantages of this product are many.

"The Greater London Council has purchased the lion's share of this adhesive in Europe since 1966," says Carr. "Studies in the United Kingdom have shown that 70 percent of wet skid accidents occur within a few yards of intersections.

"When the compound is applied to each 70 yard run-up to an intersection, accidents caused by skidding can be cut in half.

"While lives are obviously saved by the use of this product, studies show it also pays for itself in nine months," points out Carr. "For instance, money is saved in police time, in lawsuits against the city, in traffic snarl time, and in insurance rates. The life of one application is ten or more years."

According to Carr, the epoxy composition was first introduced to the U.S. in August of 1970 when Adhesives Engineering installed the surfacing on a bridge in Coalinga, Cal. The firm has also laid it on the San Francisco-Oakland Bay Bridge.