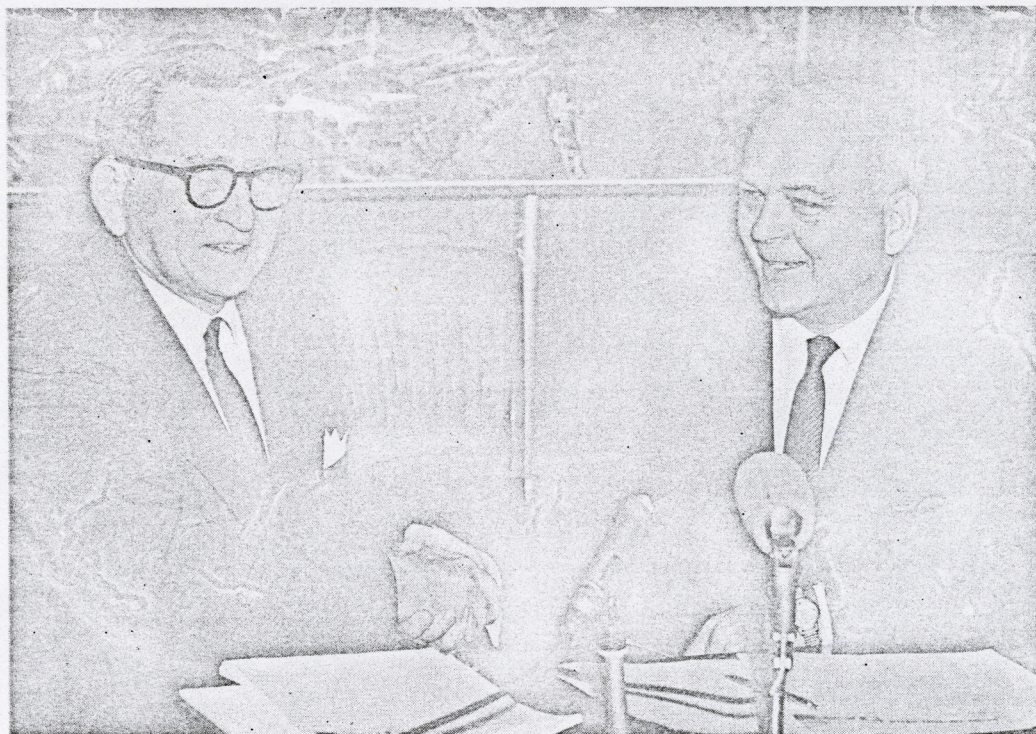


S. M. McAshan, Jr., left, and Port Commission Chairman Howard Tellepsen announce agreement.



PORT OF HOUSTON

BUYS LONG REACH DOCKS

THE HARRIS COUNTY Houston Ship Channel Navigation District has purchased the wharf facilities and warehouses in Houston known as the Long Reach Docks of the Gulf Atlantic Warehouse Co., a wholly owned subsidiary of Anderson, Clayton & Co.

The purchase was announced at a meeting of the Navigation and Canal Commissioners by Port Commission Chairman Howard Tellepsen and Anderson, Clayton President S. M. McAshan, Jr. The price negotiated by McAshan and Navigation District General Manager was \$6.5 million, to be paid for in Navigation District Revenue Bonds.

The Navigation District has agreed to lease back the properties to Gulf Atlantic Warehouse Co. for a period of 20 years at an annual rental of \$450,000 and a lease contract is being drawn up. Closing date for the change of ownership is scheduled for late December.

Tremendous Step

"This is a tremendous step forward for the Port of Houston," said Port Commission Chairman Howard Tellepsen. "The splendid facilities offered by the berths, sheds, access roads and rail-truck trackage at Long Reach Docks will greatly enhance the over-all operation of the Navigation District in years to come." President McAshan said, "This is a natural evolution, permitting more efficient handling of cargo under one man-

agement, namely, the Navigation District, and quicker turn around of ships. Houston will hereafter be in even better shape to compete with all other Gulf Ports."

Port Commission Vice Chairman W. N. Blanton, a veteran of a dozen years on the Commission, said, "This step comes as a culmination of many years of planning and serves to point up the need not only of building new facilities but of modernizing existing ones in the Turning Basin area."

Over the last nine years, the Navigation District has spent upwards of \$35 million on building new wharves, sheds, cargo handling facilities and other improvements as well as modernizing some of its existing, older ones. All but \$7 million of this has been financed by Navigation District Revenue Bonds.

Embraces 40-Acres

The 40 acres of wharves and sheds of the Gulf Atlantic Warehouse Co. have been a familiar sight to ships visiting the Port of Houston for more than three decades. The facility has high density cotton compress warehouses as well as general cargo sheds and general cargo handling facilities.

Commenting on the purchase Port Commissioner E. H. Henderson said, "The Long Reach Docks have contributed greatly to the growth of the Port of Houston over the years, and the Navigation District and the Gulf Atlantic

Warehouse Co. have worked together in developing and building foreign trade through Houston."

Commissioner R. H. Pruett said the "most flexible use of the combined facilities in the future will certainly develop a better ability by the public port body to serve the shipping public." He called Anderson, Clayton's decision to sell the facility to the publicly operated Navigation District "a helpful civic decision."

Commissioner W. D. Haden, II emphasized the Port of Houston's determination to "increase our facilities constantly by building new ones and modernizing existing areas in order to better serve the great hinterland area of 21 states stretching in a tier from Houston to the Rocky Mountains and the Canadian frontier."

Will Have 36 Wharves

The Harris County Houston Ship Channel Navigation District wharves presently extend from the upper south side of the Turning Basin around and down the north side to where Wharves 26, 27 and 28 are now under construction. With the eight additional berths of the Long Reach operation, the District will have 36 berths.

Private wharves are also operated by the Manchester Terminal, Petco Terminal and Adams Terminal comprising seven additional general cargo berths.