

Shellegram

Deer Park Manufacturing Complex

Thursday, Aug. 28

Vol. 45, No. 24



New DPMC docks near completion

After months of construction, West Dock and Barge Dock—which will both increase the DPMC's capability to load and unload vessels on the ship channel—are nearing completion.

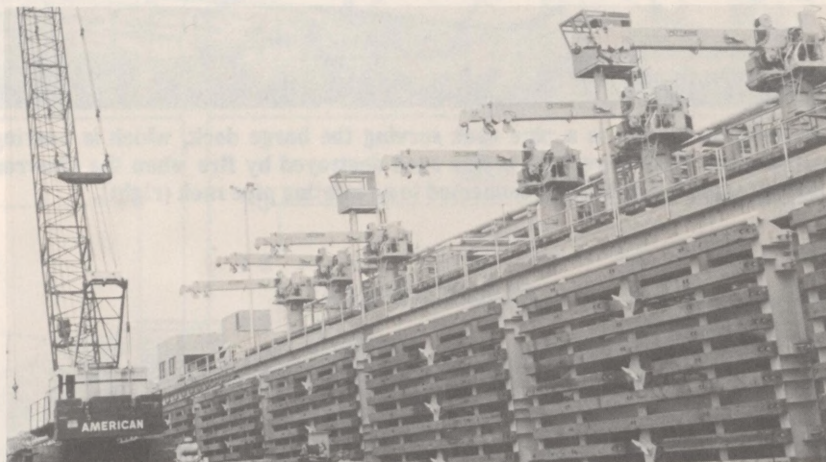
Under construction for 18 months, West Dock is expected to be in service by November—while plans call for completion of Barge Dock by the end of the year. Both projects are on schedule.

According to Don Lanning, process manager, Dispatching-Docks, West Dock is designed to handle product vessels (carrying such things as gasoline, jet fuel and solvents) of up to 55,000 tons.

These design standards are expected to meet DPMC needs for many years since the size of product vessels isn't growing as fast as crude ships—which are becoming much larger than in the past.

Barge Dock replaces the old barge facility. It was severely damaged last September when lightning struck the Chevron Hawaii, causing it to explode and start several fires. The new dock can stand up to fire better than its wooden predecessor because it's built of steel and concrete.

Both new docks are designed to compensate for subsidence. Land in this area is sinking at a lower rate than



Expected to be ready for service in November, the West Dock is designed to handle product vessels of up to 55,000 tons. The loading cranes (right) will service both fuel ships and barges. The large crane at the left is being used during construction.

previously because pumping of subsurface water, which causes subsidence, is being discouraged. But sinking continues.

To counteract this problem, the two new docks were built about 16 feet taller than older facilities—which should allow them to overcome subsidence for about 20 years.

Lanning pointed out, "At first, they'll be a little high and close to the end of the 20 years, they'll be a little low. But for most of that time, they'll be just right."

He also explained the new facilities are designed to increase the ability to meet the requirements of government environmental standards. To do this, they're equipped with drainage systems which will carry away spilled fuel before environmental damage can result.

Hershall Arnett, Project Engineering, worked with engineering contractors during the designing of those two facilities and the proposed East Dock as well. John Nepveux, Project Engineering, has supervised dock construction.

Construction of East Dock, which will

Continued on Page 2

Sonics win 'Shootout'

The DPMC's Sonics emerged as softball champions last Saturday in the first annual Texas-Louisiana "Shootout," winning two out of three games played against Norco's team.

Although Norco took an early lead by defeating the Sonics 8-5 in the first game, the Complex players fought hard to make a comeback. The Sonics crushed Norco 14-4 in the next game and edged their way to a second 15-13 victory.

As a result of the Sonics' victory, the Complex has been awarded a shiny, new trophy—that's more than four feet tall. Norco will get another crack at a DPMC team next year—when the second "Shootout" will be played in Louisiana.

But the Sonics were not the only winners Saturday night. The Angels defeated Bub's Club 17-0 in an exhibition game between the two DPMC women's teams.

\$ — \$ — \$ — \$

Provident Fund news

\$ — \$ — \$ — \$

The Provident Fund valuation is as follows:

Equities Fund
 July 31 - \$3.758
Shell Stock Fund
 July 16-31 - \$38.364

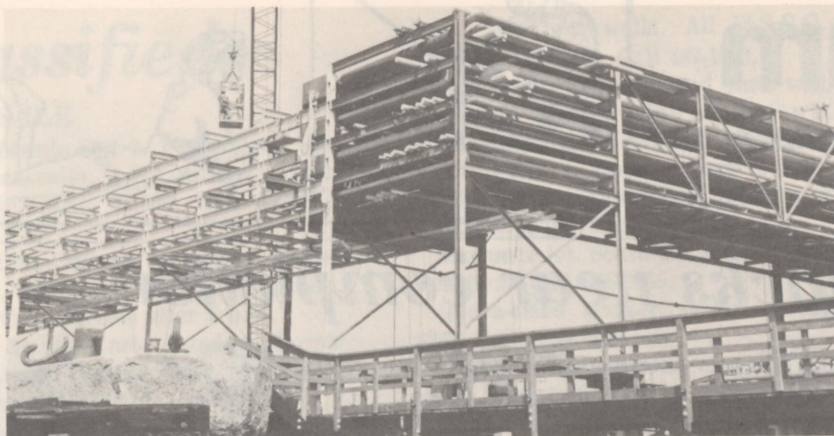
\$ — \$ — \$ — \$

The Shell Employee Stock Ownership valuation is:

July 16-31 - \$38.609

\$ — \$ — \$ — \$

New DPMC docks near completion . . .



Pictured on the left is a pipe rack serving the barge dock, which is nearing completion. Built to replace a pipe rack destroyed by fire when the Chevron Hawaii exploded, it is being connected to an existing pipe rack (right).



Shown here is the Dock Operations Building, which was occupied for the first time earlier this summer after being under construction since 1978.

Continued from Page 1

replace No. 1 Dock (another Chevron Hawaii casualty), will start next January. It'll be equipped to load and unload product ships. But it also will be a backup facility for handling crude ships since more vessels are expected to carry imported oil in future years and make additional crude dock facilities necessary.

Although the two docks now under construction are meeting exacting construction standards, East Dock (scheduled for completion in late 1982) will be built even stronger because it'll be designed to handle crude ships of up to 80,000 tons.

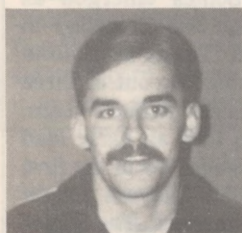
While the present construction schedule calls for completion by 1984 of one new dock in addition to East Dock, the project is in the planning stage.

However, the new dock construction programs are not the only DPMC building programs which have been under way on the ship channel.

Dock Operations Building was occupied earlier this summer after being under construction since 1978.

In addition, the slip was recently dredged to make it wider. Lanning said, "Because ships now have more room to maneuver, we feel it'll be safer to pass in the slip. This will help prevent a ship from bumping into others if the tugboat escorting it experiences a power failure."

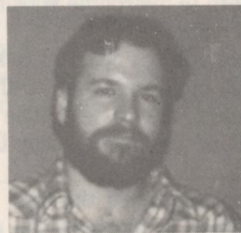
Welcome to the Deer Park Manufacturing Complex



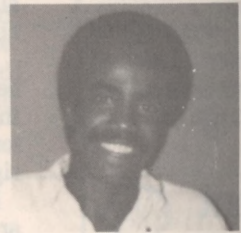
Tim Bradley
General Helper
Maintenance North



Regina Dotson
General Helper
Maintenance North



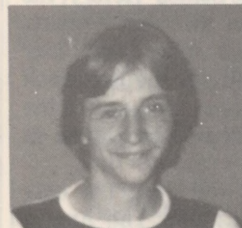
Mike Harrison
General Helper
Maintenance North



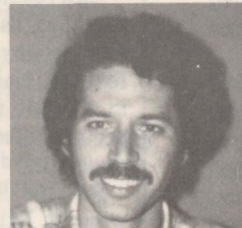
Greg James
General Helper
Maintenance North



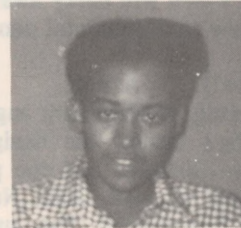
Fred Lemley
Lineman No. 1
Maintenance North



Tom Lingenfelter
General Helper
Maintenance North



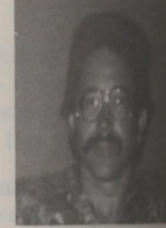
Jose Morales
General Helper
Maintenance North



Julie Sennett
General Helper
Maintenance North



Susie Winsten
General Helper
Maintenance North

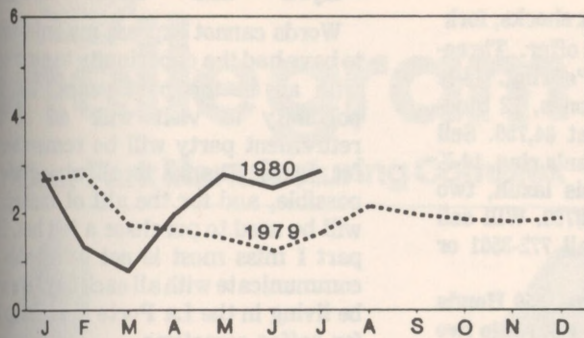


Glen Zier
General Helper
Maintenance North

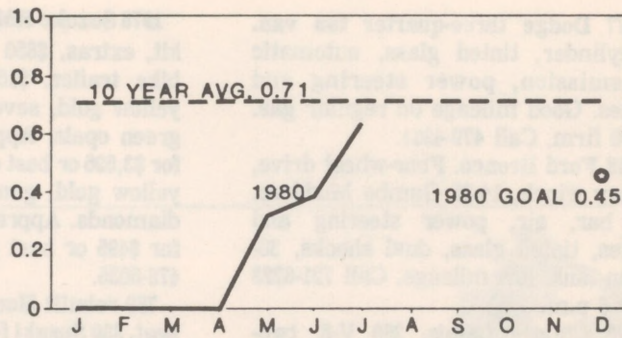
OSHA RECORDABLE INCIDENT RATE

LOST WORKDAY INCIDENT RATE

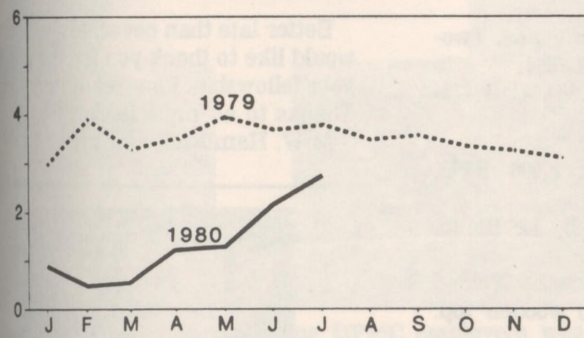
DPMC NORTH



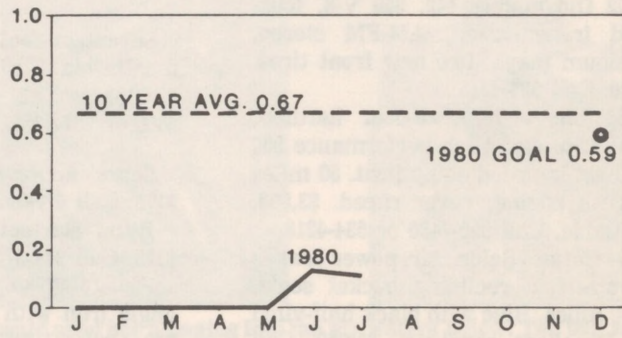
DPMC NORTH



DPMC SOUTH



DPMC SOUTH



Remember safety — it affects all of us

As reflected by these graphs, most Complex accident rates (excluding DPMC South's lost workday incident rate) had risen by last month to the highest figures registered all year. Through July, 1.8 million hours were worked at DPMC North, with 1.7 million worked at DPMC South. During that time, North reported 18 OSHA recordable incidents (any accident requiring medical attention other than first aid) and South reported 24 recordables.

This means North at the month's end had a recordable incident rate of 2.8 per 200,000 hours worked, with South recording a rate of 2.7. Despite these current trends, DPMC safety officials are optimistic the Complex can equal or exceed last year's recordable incident rates—which were 30-40 percent better than in 1978. But it will take all of us—thinking and practicing safety.



Electricians North safety party

Attending the Electricians North safety party were (left photo) Nelson and Jerry Linke, Gerald and Hilda Hamilton and Bud and

Doris Higgins. In the right photo are Ron Martin and Mike Grayson. Standing to the left of Grayson is Wanda Martin.

Classifieds

FOR SALE

1977 Dodge three-quarter ton van. Six-cylinder, tinted glass, automatic transmission, power steering and brakes. Good mileage on regular gas. \$3,200 firm. Call 479-4964.

1978 Ford Bronco. Four-wheel drive, factory winch, 14-35 Gumbo Mudders, roll bar, air, power steering and brakes, tinted glass, dual shocks, 30-gallon tank, low mileage. Call 721-6223 after 6 p.m.

1979 Cutlass Calais. 260 V-8, two-barrel, blue on blue. 27,000 miles, 19-23 miles per gallon. \$6,000 or take up payments. Call 481-8051.

1972 Oldsmobile 442. 350 V-8, four-speed transmission, AM-FM stereo, aluminum mags, two new front tires. \$1,200. Call 534-4218.

1966 Chevy II. Two-door hardtop, street-strip car. High performance 350 V-8. Best in speed equipment. 50 miles on fresh engine, never raced. \$3,500, negotiable. Call 925-7480 or 534-4218.

1974 Cutlass Salon. Air, power brakes and steering, reclining bucket seats. 52,000 miles. Blue with black half-vinyl top. Excellent condition. \$1,950. Call 476-9913.

1978 Chrysler LeBaron. Loaded, excellent condition, low mileage. Must sell. \$3,650, negotiable. Call 944-7435.

1978 Fiat Spyder. Air, AM-FM, five-speed. Call 944-7343.

1978 Honda 750-K. 5,000 miles. Two helmets, canvas cover, windjammer,

backrest. \$2,100. Call 471-0557 after 5 p.m.

1978 Suzuke RM-125. Fox shocks, fork kit, extras. \$850 or best offer. Three-bike trailer. \$150. Lady's ring. 14-K yellow gold, seven diamonds, 12 blue-green opals. Appraised at \$4,750. Sell for \$3,595 or best offer. Man's ring. 14-K yellow gold, genuine lapis lazuli, two diamonds. Appraised at \$700. Will sell for \$495 or best offer. Call 772-3561 or 476-6035.

750 rebuilt Honda engine. 550 Honda seat. 380 Suzuki for parts. Four into two exhaust pipes for Honda. Two sets of antique Marx electric trains. Willby Lionel trains. Call 337-2086 or 337-3900.

Seventeen-foot Coleman canoe. Two-months-old. \$250. Call 471-7694.

Glastron ski boat. \$4,000. Call 475-8605 or 267-6258.

Sears air conditioner. 8,000 BTU. \$175. Call 477-7393.

B-flat clarinet. Noblet by Le Blanc. \$125. Call 944-3789.

Reloading or work bench. Welded angle iron with two-inch wooden top. \$40. Call 471-2983.

FREE

Room and board. For two responsible mature working ladies in exchange for night-time security for elderly lady. Call 946-1492.

PERSONAL

Better late than never I guess, but my wife, Billie, and I wish to thank all of you for the retirement party and gifts.

It was certainly appreciated. Thanks again.

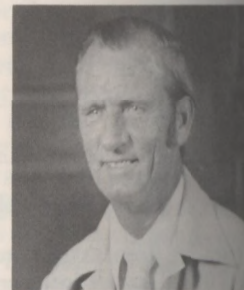
—Byrd and Billie Baggett

Words cannot express my enjoyment to have had the opportunity to associate with all in the past years. The opportunity to visit with all at the retirement party will be remembered for years. Thanks to all who made it possible, and for the gift of money. It will be used to purchase a felt hat. The part I miss most is not being able to communicate with all each day. We will be living in the La Porte area. Stop by for coffee sometime.

—J.R. (Chief) and Margaret Ensminger

Better late than never. My wife and I would like to thank you for the gift and your fellowship. I am really enjoying it. Thanks to all my friends.

—M.W. Hambrick and wife



Keenan retires

Bob Keenan, 57, a senior supplies assistant at the DPMC South Quality Control Lab, retired Aug. 1 after 34 years of company service.

He and his wife, Ann Louise, reside at 5515 Clarewood, Houston.

Congratulations

Congratulations to the personnel at the Docks for reaching a new safety record. Those personnel made it to one safe year on Aug. 21.

Shellegram

Deer Park Manufacturing Complex

Published weekly by Shell's Deer Park Manufacturing Complex for its employees and pensioners. All inquiries should be addressed to Shellegram, Shell Oil Company, P. O. 100, Deer Park, Texas 77536.

Les Cole - Editor