

Shellegram

Deer Park Manufacturing Complex

Thursday, October 5, 1978

Vol. 43, No. 40

Gas Recovery's Flying Duo Ready For Takeoff

Down through the ages men have dreamed of flying. But it wasn't until our century that the dream became a reality.

The year was 1903 when the Wright brothers, Orville and Wilbur, both in their thirties, successfully flew their invention: an airplane with a motor. And, man's age-old dream became a reality.

Some seventy years later another young man, with a desire to soar above the earth, learned to fly. And in December 1974, that young man, Jerry Jones, bought his first plane: a 1956 Cessna 172 prop job with four seats and a single engine.

Though the Cessna is twenty-two years old, Jerry, an operator No. 1 in Gas Recovery, declares it airworthy. And, without a doubt, he is in a good position to determine the airworthiness of an airplane. He is a certified airplane mechanic, licensed to perform annual inspections of airplanes for himself and others. The certification process along with the experience he gained while performing this type of work for Hobby provide Jerry with both the mechanical knowledge and the practical knowhow to determine a plane's airworthiness.

Since buying the Cessna, Jerry has taken an annual flying vacation to various state and national parks during October. And for the past three years, Nelson King, shift foreman, Gas Recovery, has gone with him. Both men are convinced that October is the best time to go on vacation. Why? Well, there are fewer tourists as schools are in session, and the fall colors are spectacular in October.

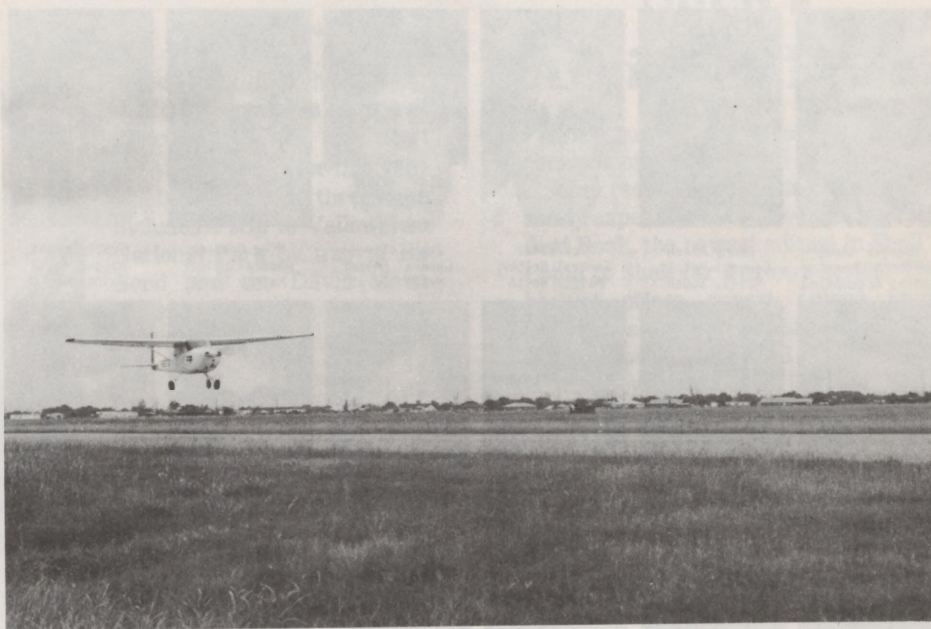
So, with Jerry at the controls and Nelson as co-pilot, the duo have winged

Jerry's Cessna 172 to places such as Mesa Verde, Monument Valley, Lake Powell and Bryce Canyon.

This October the duo may become a threesome - provided Nelson's brother, Jim, goes with them. Unfortunately, Jim's wife feels that her brother-in-law, Nelson, is a daredevil and doesn't want

her Jim lost on some lonely mountainside. Nelson a daredevil? Well, it is true that he likes taking the back roads when driving and that he has been lost a time or two or more in his life. And he and Jerry have been known to travel on snow-covered mountains in a four-

Continued on page 3.



Jerry Jones wings his Cessna 172 into the "wild blue yonder" toward his home in Anahauc.

Provident Fund News

The Provident Fund valuation is as follows:

Equities Fund

September 15 - \$2,839

Shell Stock Fund

September 1-15 - \$34,754

Ten-and-Over Parties

Sylvan Beach Pavilion

October 14 - Refinery

October 21 - Chemical

Classifieds

SCORA Events

Beavers Jerri Dromgoole (left) watches as teammate Vickie Breshears (center, dark shirt) safely slips past first baseman Pam Hahn, one of Frank's Foxy Ladies. Another Foxy Lady, Peggy Cahill, watches with disbelief from center field as the Beavers score another run to win 7:6.



Welcome To The DPMC

Theresa Adams Keypunch Operator General Accounting	Danny Allen General Helper Maint. South	Rick Baker General Helper Maint. North	John Cottrell General Helper Maint. North	Mike Davison General Helper Maint. South	Frank Dumont Rigger No. 1 Maint. South
Ron Finnigan Emp. Rel. Analyst Industrial Relations	Sandra Hall Senior Clerk Financial	Pat Hayes Office Secretary Operations West	Colleen Hutchings Engineer Envir. Engrg.	Nancy Kocurek Clerk Distribution	Jack Monroe General Helper Maint. North
Joe Palomarez General Helper Maint. South	Virginia Pavlovsky General Helper Maint. South	Kevin Pestka General Helper Maint. South	Jo Raburn Typist General Services	Ginny Smith General Helper Maint. North	Victor Stephens General Helper Maint. South
Brian Turner Supt. Operations Phenol/Acetone	Vicki Warnke Office Secretary Distribution	Roger Warren General Helper Maint. South	Jonnie Weatherly General Helper Maint. South	Margaret Weathers General Helper Maint. South	Ray Welborn General Helper Maint. North

World Travels Meeting Topic

Barbara Pierce Bush, wife of George Bush, will be the guest speaker at the next meeting of the Shell Wives Club, which will be held at the Houston Country Club, 1 Potomac (off Woodway, between Voss and Fountainview), at 11:30 a.m., Wednesday, November 8.

Mrs. Bush will review her worldwide travel experiences while her husband served as Congressman, Permanent Representative to the United Nations, Chairman of the Republican National Committee, Chief of the United States Liaison Office in the People's Republic of China and Director of the Central Intelligence Agency.

During the last 10 years, the Bushes have travelled on six continents, and lived in China for 14 months. Late last year, they again visited China and Tibet.

All Shell wives in the Houston area are invited to attend the meeting. The price, \$10 per person, includes luncheon, wine and parking.

Questions concerning the luncheon may be addressed to Mrs. Lily Smith, 467-3530.

Blood Services Make-Up Day

Make-up day for blood donors to Blood Services of Houston will be tomorrow, October 6, at the chemical plant. All employees wishing to donate blood should contact Glenn Pardon on 7308 for scheduling.

Employees Retire After Years Of Service

Ben S. Baldwin, 58, retired with 27½ years of company service. At the time of his retirement, he was superintendent, Operations-Expansion.

He and his wife, B.J., will make their home in Buchanan Dam, Texas.

R. W. "Bob" Bray, 59, retired with 29 years of company service. At the time of his retirement, he was superintendent, Engineering and General Facilities.

He and his wife, Jeanne, will make their home in Graham, Texas.

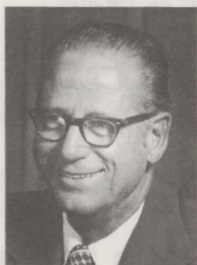
Grover Byford Dunn, 65, retired with 28 years of company service as sign painter in Maintenance North.

He and his wife, Thelma Pauline, reside at 3218 Fern in Pasadena.

Joe F. Hill, 65, retired as instrument-man No. 1, Instrumentation. At the

time of his retirement, Joe had almost 32 years of company service.

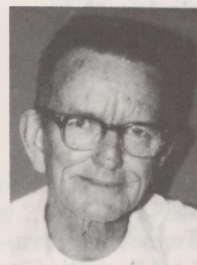
He and his wife, Ruth, reside at 2015 Lamar in Pasadena.



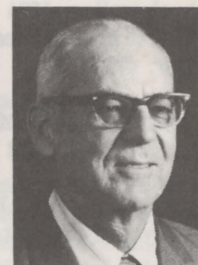
Baldwin



Bray

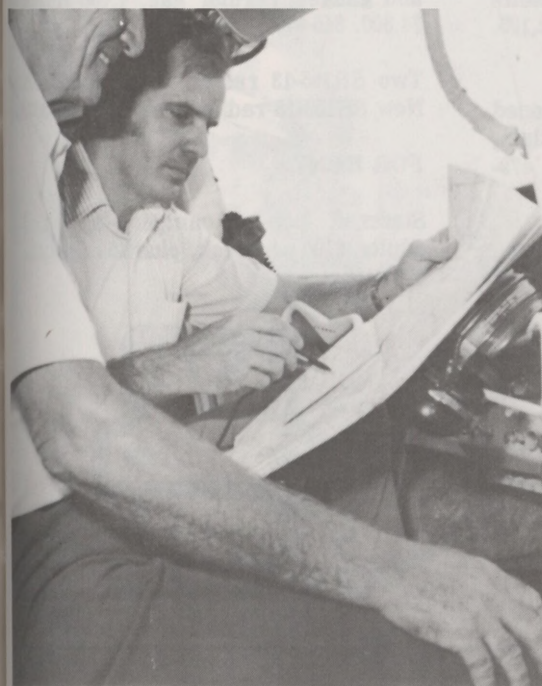


Dunn



Hill

Gas Recovery's Flying Duo ...



Continued from page 1.

wheel Jeep. But those things don't make a man a daredevil. At least to Nelson they don't.

Vacation plans for this year, whether a duo or threesome, includes a trip to Yellowstone National Park by way of Big Bend and the Davis Mountains. And, who knows, it may include a side trip or two.

Gas Recovery's flying duo, pilot Jerry Jones (background) and co-pilot Nelson King, reviews flight plans for their trip scheduled later this month.

Shell's Accident Book

What should you do if you see a traffic accident or are involved in one?

Some recommendations from traffic safety experts are included in *The Accident Book*, the newest edition in Shell's *Come to Shell for Answers* series. The booklet offers expert advice from national safety organizations, police officials, paramedics and physicians. It is a follow-up to *The Driving Skills Book*, designed to help reduce driving errors leading to vehicle accidents.

Shell's newest booklet contains recommendations concerning assistance when arriving first at the scene of an accident and lists the obligations of drivers who are involved in accidents. It also includes a suggested list of medical supplies to be carried in an accident kit and describes basic first-aid procedures. The booklet recommends that drivers learn more about first-aid techniques through community classes. About 40 million copies are being distributed through national magazines and participating Shell service stations.

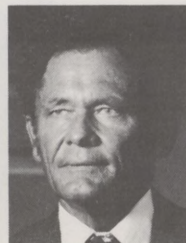
Service Anniversaries



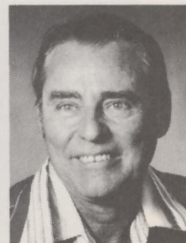
35 Years
W. P. Matthews
Env. Cons.



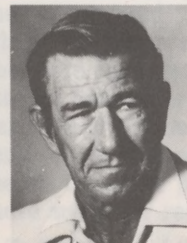
30 Years
B. O. Bishop
Inspection



30 Years
V. Martin
Aromatics-West



30 Years
J. T. Parker
CPS



30 Years
M. A. Wood
Maint. North

Traffic Statistics

The number of DWI drivers involved in fatal motor vehicle traffic accidents increased 35 percent, from 519 in 1976 to 699 in 1977. Persons killed in motor vehicle traffic accidents involving DWI drivers increased 27 percent, from 636 in 1976 to 809 in 1977.

Classifieds

FOR SALE

15' custom built Holmes plywood boat, big wheel trailer, 1974 electric 50 hp Evinrude, 40 hours or less time. \$795 or best offer. 472-3187

Honey delivered to DPMC: 2 lbs, \$1.85; 1 gallon, \$9.50. 485-5472

1975 Olds Omega, 250 C.I., 6 cyl., standard, heavy duty radiator. \$1,200. 479-1092

3-2-2 in Deer Park, 2 years old, custom drapes, Nutone food center, corning-ware cook top, many extras, fenced with greenhouse. 479-7436 after 6 p.m.

1977 LTD Landau, 2-door hardtop, 400 C.I., 2 bbl, auto, air, tilt steering, cruise control, P-S-B-W-L-S, new tires, low mileage. \$6,000. 479-1403

1975 Gremlin X-P-S-B, air, rally, auto, AM-FM, 6 cyl., rear window defrost, cruise. \$1,900. 734-5475 or 747-3188

Omega B66XL photographic enlarger with Dichroic color head, voltage stabilizer pack, 35mm & 75mm lens, 35m and 2 1/4 x 2 1/4 negative carrier, Omega easel, Unicolor 11x14 color print processing drum, electric drum roller, Patterson film processing tank, duo cube color analyzer, Kodak color data book, etc., all like new. \$300. 452-0000

1976 Ford Custom 150, P-S-P-B, air, regular gas, excellent condition. \$3,600. 427-2208 after 4:30 p.m.

Sears Citation manual typewriter with carrying case. \$49.95. Approximately 20 horse books, brand new with hardback covers. \$1.00 per book. 427-2208

1974 Chevy LaGuna 52, 350 C.I., automatic, all power, 73,000 miles. \$950 or best offer. 473-1137 or 479-0146

1976 Trans Am Pontiac, AM-FM 8-track, new tires, air, automatic. \$4,700. 333-2349 after 5 p.m.

1969 Mustang, mags, air, tape, metal flake paint. \$1,600. 472-4793

Heavily wooded acre in San Jacinto county. \$2,850. 333-2349 after 5 p.m.

Brunswick air hockey table. \$75. 476-0857

1975 Cadillac Sedan DeVille, vinyl top, 60-40 bench seats, new tires, cassette and 8-track, very good condition. \$5,195. 479-6130

14' V-bottom aluminum boat, cushioned seats, steering wheel drive, 25 hp Elgin, 35 hp Evinrude and trailer. \$800. 479-2268

1972 Datsun 240Z, air, AM-FM, auto, CB, excellent condition. \$3,350. 485-2706

1973 20' Champion motorhome, loaded with extras, low mileage, excellent condition. \$8,150. 477-2483 after 5 p.m.

1972 Maverick 2-door, 6 cyl., power steering, auto, air, radio, 54,000 miles, clean. \$995. 455-7393

1973 Toyota Corona 2-door, hardtop, 47,000 miles. \$950. 455-7865

1974 Bayliner 23', sleeps 6, stove, sink, ice box, head, 6 cyl., new Easy-Load trailer. \$8,500. 427-3298

1976 Datsun B210, AM-FM, air, S-R tires. \$3,000. 477-9182 after 4 p.m.

1975 15' Phantom trihull, walk-thru windshield, canopy, 75 hp Chrysler, drive-on big wheel trailer, excellent condition. \$2,800. 477-1043 or 479-5156

1978 Coleman pop-up camping trailer (Valley Forge), sleeps 6, Porta-Potti, 3-burner stove, excellent condition, extras. 479-9801 after 5 p.m.

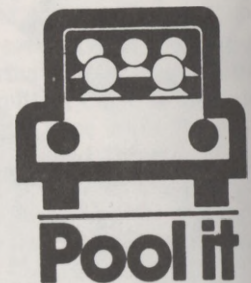
Brunswick air hockey table. \$75. 11' Ladybug sailboat, like new. \$125. 476-0857

1978 Chevrolet pickup, 250 SWB, step side, standard, air, heavy duty radiator and gauges, regular gas, 4,400 miles. \$4,600. 645-8797

Two SR155-13 radial tires. \$10 each. New SR155-13 radial tire. \$20. 358-8673

FOR RENT

Starcraft pop-up camper, sleeps 6 adults. \$100 per week, plus \$50 deposit. 479-6130



Shellegram

Deer Park Manufacturing Complex

Published weekly by Shell's Deer Park Manufacturing Complex for its employees and pensioners. All inquiries should be addressed to Shellegram, Shell Oil Company, P. O. 100, Deer Park, Texas 77536.

Dotti West - Editor

P. O. Box. 100
Deer Park, Texas 77536