

1 9 4 1
HOUSTONIAN



HQ
1941



Covers—UNIVERSAL BOOKBINDERS
Engraving—ART ENGRAVING Co.
Photographer—CHADWICK STUDIOS
Printer—GULF PUBLISHING Co.

BILLY W. MILLER
Editor

CHARLES BRIGANCE
Business Manager

1941

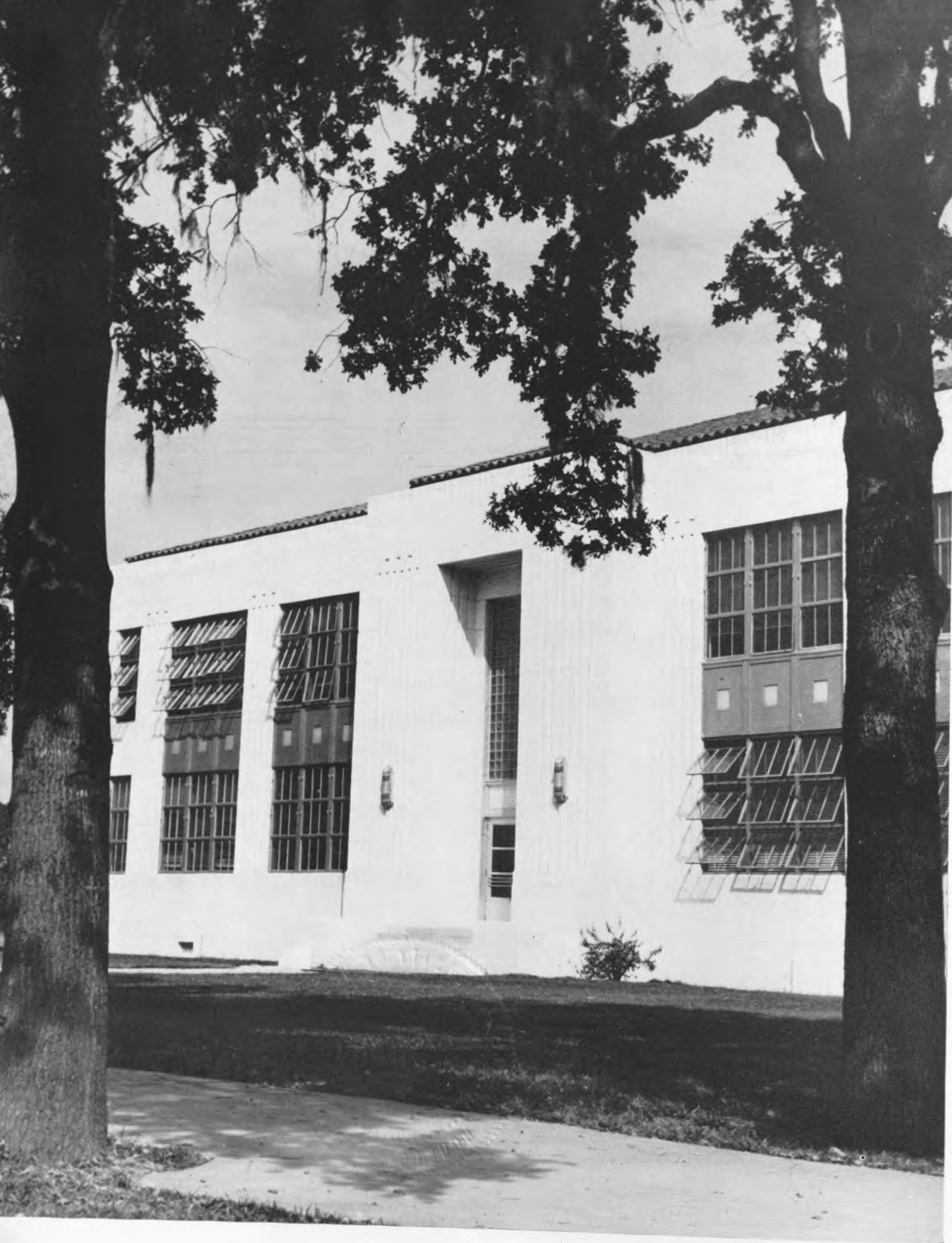
HOUSTONIAN



BOOK SEVEN

PUBLISHED BY THE STUDENTS
OF THE UNIVERSITY OF HOUSTON

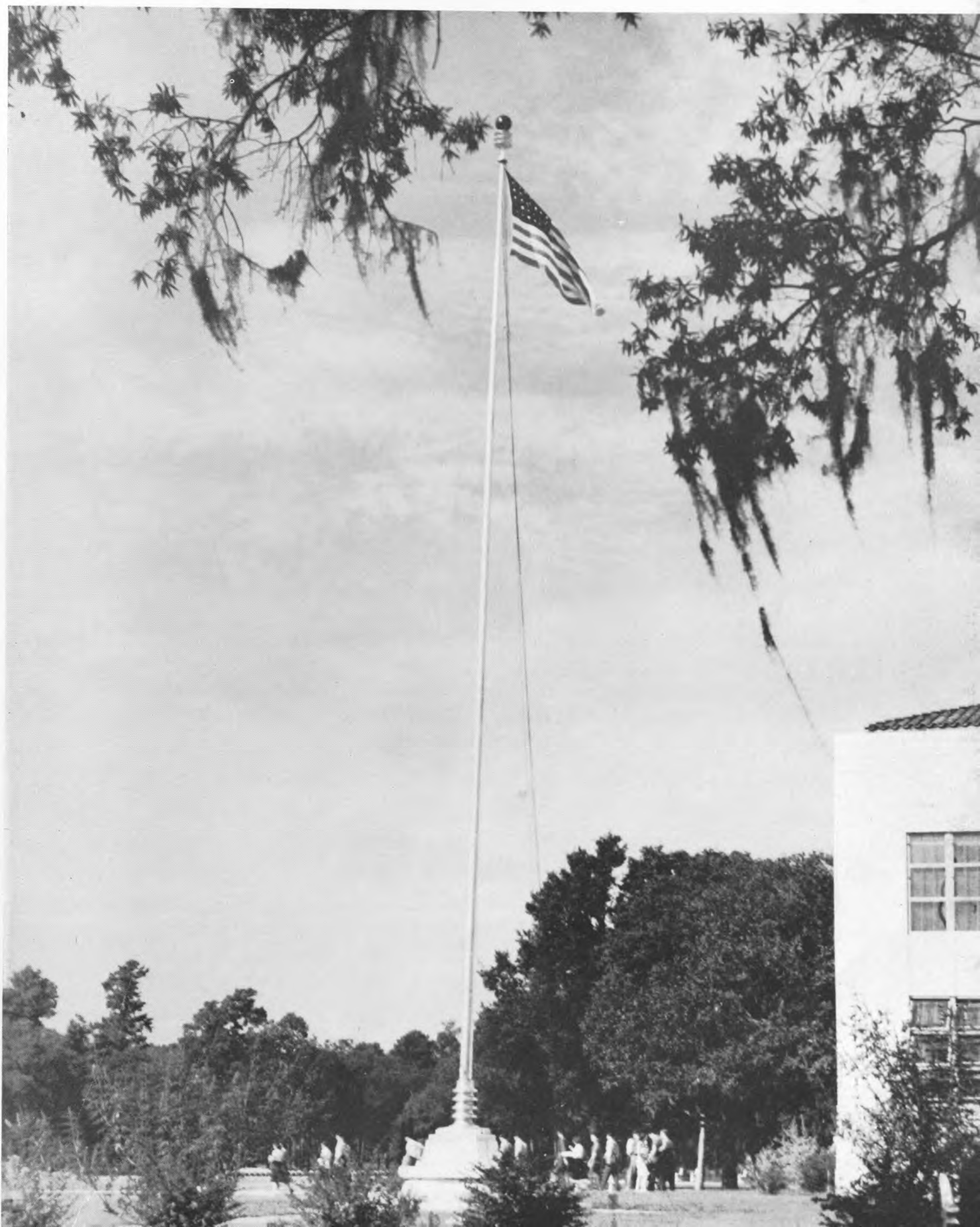
37597



Spencer
LD
2281
H745
H6
1941

Science Building—Southwest Entrance

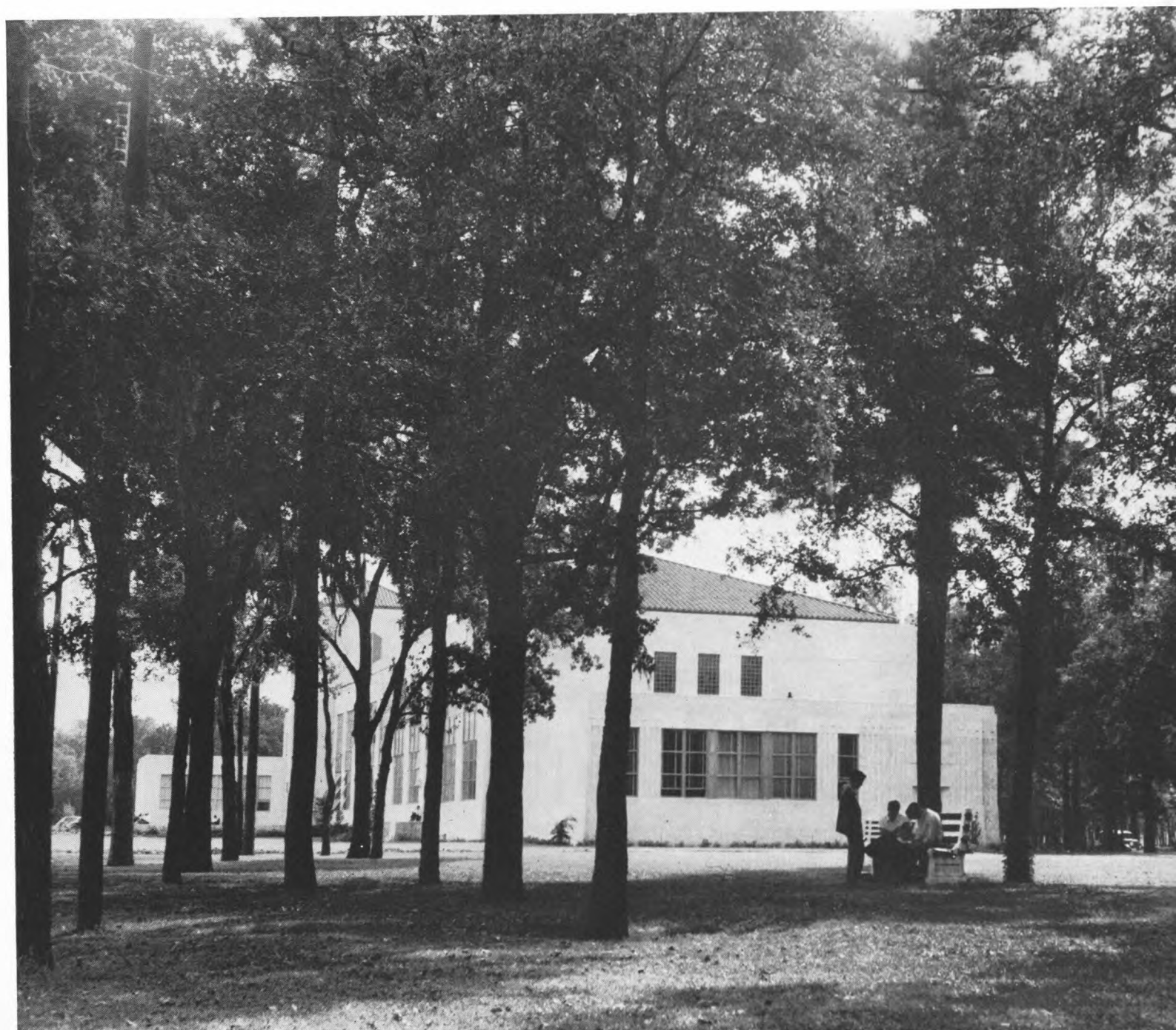
Pearl C. Bender Memorial Flagstaff
Dedicated by Cougar Collegians 1940





Science Building—The outstanding natural beauty of our campus blending with the architecture of its buildings . . . the aesthetic and the material—

Roy Gustav Cullen Memorial Building



DEDICATION

★ ★ ★ ★ ★ ★ ★ ★ ★ ★

To the Frontier Fiesta and to the school spirit it has helped to create, to the student unity and fellowship it has called in to being, and to the closer reality of our goal — the Student Recreation Building — this, the 1941 HOUSTONIAN is proudly dedicated.



Roy Gustav Cullen Memorial Entrance



Library

Table of
C O N T E N T S



ADMINISTRATION

CLASSES

VANITY FAIR

HONOREES

PUBLICATIONS

ORGANIZATIONS

DIVERSIONS

ADMINISTRATION

BOARD OF TRUSTEES

President DR. RAY K. DAILY

Vice-President HOLGER JEPPESEN

Secretary MRS. B. F. COOP

Assistant Secretary DR. HENRY A. PETERSEN

E. D. SHEPHERD, SR.

GEORGE D. WILSON

EWING WERLEIN



DR. E. E. OBERHOLTZER
President of the University

ADMINISTRATIVE OFFICERS



N. K. DUPRE
Dean of the University



DR. W. W. KEMMERER
*Comptroller and Director
of Curriculum*



H. L. MILLS
Business Manager



MURRAY A. MILLER
Assistant Dean

PEARL C. BENDER
Dean of Women



DR. C. F. HILLER
Bursar

ROBERT A. WHITE
Auditor

FACULTY

FINE ARTS



Frederic Browne, Robert W. Talley, L. Standlee Mitchell, Bruce Spencer King

EDUCATION



Archie W. French, Samuel W. Henderson, Dr. Alva L. Kerbow, Dr. Arvin N. Donner,
Charles S. Meek

ENGLISH



Mary Edna Poole, Dr. C. F. Hiller, L. S. Mitchell, Edith Carlton, William Goyen,
Katherine Keller, Mercedes Sloss

Hilda Lemon, Evelyn Thompson, Ruth Pennybacker, Nena Lewis, Dr. R. B. Daniels,
Bessie Ebaugh

SOCIAL SCIENCE



Edward Chan, Dr. Joseph Werlin, Dr. Arvin Donner, Jules Vern, Dr. Louis Kestenberg,
Charles Meek, Leon G. Halden, V. J. McCoy, Dr. James Manfredini, Freeman Nixon

MATHEMATICS



N. C. Hunsaker, J. D. Hutchinson, W. A. Rees, Dr. Anthony Aucoin, Martin Wright

ENGINEERING



J. E. Hoff, R. K. Walters, Francis Daasch, L. B. Fields

LANGUAGES



William Shamblin, Dr. Louis Kestenberg
Floy P. Soule, Jules Vern, Dr. James Manfredini, Dr. C. F. Hiller, Betty Heinrich

BUSINESS ADMINISTRATION



R. A. White, P. C. Masten, Roy Baines, H. A. Helms, Dr. Raymond Baldwin
E. B. Day, Addie Small, Lillian Warren, Yvonne Reifschneider, Howard Branch

SCIENCE



Dr. Keith Hussey, Fred Smith, R. D. Wood, Dr. Victor Greulach, Lyle T. Hooker,
Dr. Lawrence Rosenblad

W. W. Curtis, Dr. Eby McElrath, E. P. Doremus, C. B. Johnston, Dr. G. A. Drake,
Bill Williams

Charles Houston, E. W. Schuhmann, Dr. Marguerite Rogers, Leroy Simons,
Arthur Poxon, Louis Shepard



Faculty, students eye view before exams — Mitchell, comfortably disposed, tells 'em how — McIlhenney, Hiller, and Capt. French linger over tea and crumpets — Representative Thomas flanked by "Doc" and Polichino — French must know a funny one, Trustee Peterson seems dubious — questions and answers by the profs — Doctor Eby, in sunglasses — "Count" Manfredini and his subject, the whole of Latin America — the Dean says he caught 'em himself, honest — pensive? — McCoy smacks one — it looks like a high foul for Talley, and a bit tongue — watching the waves does things to you gentlemen, careful — well, you wouldn't listen, Mr. Johnson.



Werlin and Mitchell, temporarily wall-flowers, while "Doc" Kemmerer and friend "put-that-little-foot" - Talley and "date" arrive for Trustee-Faculty Party - Carlton attempts to cheer the Dean up, while Lewis stores up for that rainy day - that's no hole in Dr. Donner's head, the pate is merely decorated geometrically by a scalene cone - Press Feature Writer Halden casts his shadow of the future - panorama, note exact likenesses on walls - "Psycho" Kerbow and "Math" Reese discuss the party, and things - Shamblin and Ebaugh make a gay evening of it.

STUDENT GOVERNMENT

STUDENT ASSEMBLY

The Student Assembly is closing its second year, having made a splendid record in such a short period. Its purpose is to recognize and assimilate a true democratic attitude by making up a membership composed of two representatives from each recognized organization on the campus. The duty of the Assembly is to promote school spirit, cooperation and to act as a cross section of school representation on matters pertaining to school life — A true sound board of student sentiment.

OFFICERS

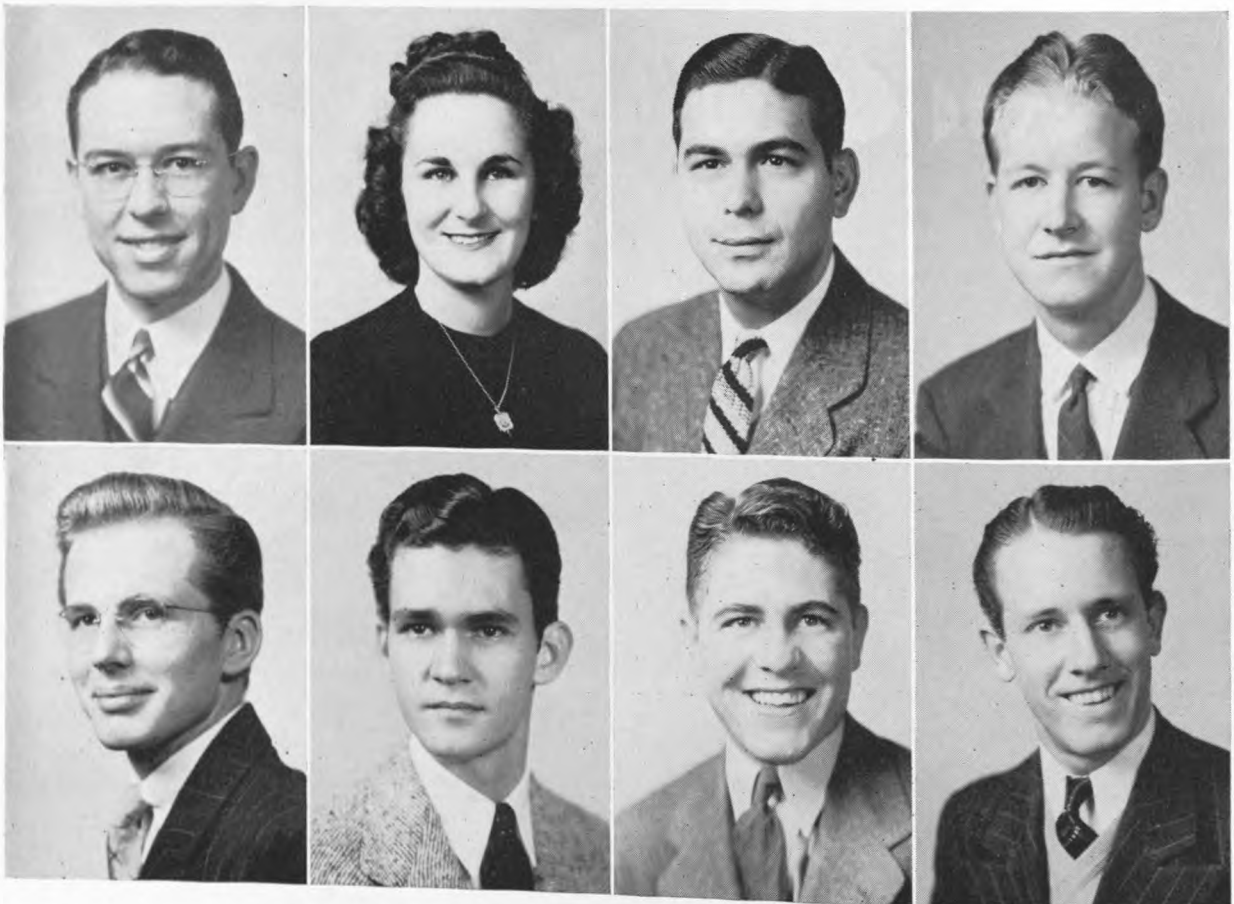
<i>Presiding Officer</i>	Tom Yerxa
<i>Vice-President</i>	Ray Campbell
<i>Secretary</i>	Gene Cuny
<i>Parliamentarian</i>	Alan Lohse
<i>Clerk</i>	Billy Miller

Student Assembly members are:

<i>Senior Class</i>	Earl W. Brokaw, Arvena Johnson
<i>Junior Class Day</i>	Robert W. Sullivan, John J. Nicosia
<i>Junior Class Night</i>	Marian Sharpiot, Tom Lee
<i>Sophomore Class Day</i>	Ned Simes, Donald Jeppesen
<i>Sophomore Class Night</i>	Vivienne Haubelt, Robert Condon
<i>Freshman Class Night</i>	Felix Stanley, Jim Brown
<i>French Club</i>	Mary Pyle, Mary Frances Jones
<i>Red Masque</i>	Charlotte Walser, Margaret McConnell
<i>Cougar Collegians</i>	Alece Brigance, Marion Moore
<i>Buckaroos</i>	Frances Evans, Frances Lee Smith
<i>Engineering Society</i>	Conrad Schoppe, Arthur Poxon
<i>Business Administration</i>	Ersula Morgan, Joe Potter
<i>Foil Club</i>	Gerald Leinweber, John Kosut
<i>Cougar</i>	Louise Pridgen, Gene Cuny
<i>Houstonian</i>	Billy Miller, Charles Brigance
<i>Pre-Law Club</i>	Halbert Berry, Ray Campbell
<i>Spanish Club</i>	Francis Lynch, Patricia Soule
<i>Glee Club</i>	Frank Avery, George Walker
<i>Geological Society</i>	Philip Allen, Ray Grodheus
<i>Institute of Latin American Affairs</i>	P. J. Sterne, Rosemary Pellerin
<i>Choral Club</i>	Marian Pellerin, Susan Larimer



Weed Peterson Tom Yerxa
 John Taub Louise Butler Jack Valenti



Will Gay Alice David Frank Zeto Frank Walker
 Charles Saunders Johnny Goyen Clifton Shelton Bill Fullick

STUDENT COUNCIL

The Student Council is composed of thirteen members, five from the Student Association and eight as representatives of the four classes. The officers are President, Vice-President and Secretary of the Student Association who automatically serve as the same officers of the Council. Two Councilmen-at-large are elected from the whole student body at the same time as the Association officers and serve as direct representatives of the whole student body.

The Council acts in a dual capacity as the representative body of the students and the administration in matters concerning both parties relating to student problems. It performs as a judicial body on student controversial situations, conducts elections, helps to set up the social calendar, regulates the student handbook, supervises afternoon free dances and is the Dean's personal student advisory body. The Vice-President of the Council acts as the presiding officer of the Student Assembly. Mr. Harvey W. Harris is the Faculty Advisor to the Council.

OFFICERS

<i>President</i>	WEED PETERSON
<i>Vice-President</i>	TOM YERXA
<i>Secretary</i>	LOUISE BUTLER
<i>Councilmen-at-large</i>	{ JOHN TAUB JACK VALENTI
<i>Senior Class</i>	{ WILLIAM GAY <i>President</i> ALICE DAVID..... <i>Representative</i>
<i>Junior Class</i>	{ FRANK ZETO..... <i>Day President</i> FRANK WALKER..... <i>Night President</i>
<i>Sophomore Class</i>	{ CHARLES SAUNDERS..... <i>Day President</i> JOHNNY GOYEN..... <i>Night President</i>
<i>Freshman Class</i>	{ CLIFTON SHELTON..... <i>Day President</i> WILLIAM FULLICK..... <i>Night President</i>

CLASSES

SENIORS

C
L
A
S
S

O
F
F
I
C
E
R
S

President.....WILLIAM C. GAY

Vice President.....CHARLES BRIGANCE

Secretary.....ELIZABETH CARLON

Treasurer.....FLETCHER DAILEY



ARNOLD, BILLY—B.S.

Major—Social Science; B. A. Club; Student Assembly; Fiesta, 40.

BIRATH, MRS. IDA—B.B.A.

BRADBURN, MAUDE ELLEN—B.B.A.

Secretarial Club; B. A. Club; Cougar Collegians; Red Masque Players.

BRIGANCE, CHARLES—B.B.A.

Business Manager Houstonian, 41; Treas. Junior Class, 40; V. Pres. Senior Class, 41; Student Assembly, 40, 41.

BUNTING, NINA LOIS—B.A.

Major—English; Cougar Collegians.

CAMPBELL, DOROTHY MAY—B.S.

Major—English.

CARLON, ELIZABETH FREW—B.A.

Major—History; Cougar Collegians, 38, 39, Sec'y, 40, Pres., 41; French Club, 38, 39, 40; Senior Class, Sec., 41; Coronation Representative to Huntsville, 41; May-fete, 40, 41; Red Masque Players, 40, 41.

CHENAULT, W. BLEIVETT—B.A.

Major—Engineering.

CHRISTY, VIRGINIA CARY—B.A.

Major—Government; Spanish Club, 39.

COBB, MARY—B.S.

Major—Business Administration; Cougar Collegians; B. A. Club.



COBB, WYOMA—B.S.

Major—Business Administration; Cougar Collegians; B. A. Club.

COKER, DENTON—B.A.

Major—Education.

CRAWFORD, HULON L.—B.S.

Major—Psychology.

CRAWFORD, RUTH—B.S.

Major—Business Administration; B. A. Club, 37, 38, 39, 40, 41; Buckaroo, Pres., 41; Public Speaking Club, 36.

CRUMP, WILLIAM—B.S.

Major—Geology.

DAILEY, FLETCHER—B.S.

Major—Government; Senior Dance Ticket Chairman, 41.



DAVID, ALICE MARIE—B.S.

Major—Social Sciences; Student Council, 41; Student Association, Sec., 40; Buckaroos, 39, 40, 41; Cougar Collegians, 38, 39, 40, 41; Houstonians, 38, 39, 40, 41; Mayfete, 40, May Queen, 41; Cougar Editor, 39; Honor Activity Society, 40, 41; Outstanding People, 40.

DAWSON, KITTY LOU—B.S.

Major—Sociology; Cougar Collegians, 38, 39, 40, 41; Red Masque Players; Pre-Law Club, 41; Cougar Staff.

DUNLOP, NAOMA BURKS—B.A.

Major—Education.

DURST, MAURINE—B.A.

Major—Education.



DYBALSKI, MILDRED—B.S.
Major—Art.

DYER, EVERETT—B.A.
Major—Education.

ERVIN, ROGER JAMES—B.S.
Major—English; Society of Engineers, 38, 39, 40;
Cougar, 38, 39, 40, 41; Glee Club, 37, 38, 39, 40, 41.

FITZGERALD, KATHLEEN—B.S.
Major—Education.

FOX, ELOISE—B.S.
Major—Education.

FRANSEE, GABRIEL—B.S.
Major—Biology; French Club, 38; Fencing Club, 38;
Pre-Medical Society, 40.

GARDNER, MILTON—B.S.
Major—Engineering.

GAY, WILL—B.B.A.
Major—Accounting; B. A. Club; Debate Club; Student
Council, 41; Senior Class Pres., 41.

GREER, THORNTON—B.B.A.
B. A. Club; Secretarial Club.

HAYS, BETTIE—B.A.
Major—Business Administration; Red Masque Players;
Collegiate Dramatic Society.



HEINRICH, BETTY LEE—B.A.

Major—Foreign Language; Cougar Collegians; French Club; Spanish Club.

HELTON, FRANCES—B.A.

Major—English; Cougar Collegians; Tennis Club; El Foro Espanol.

HOLLAND, ELIZABETH—B.S.

Major—Education; Buckaroos.

HOUZE, JOHN HENRY—B.A.

Major—Business Administration.

JOHNSON, ARVENA—B.S.

Major—Education.

JOHNSON, MARY SUSAN—B.S.

Major—Education; Buckaroos.



JOHNSTON, DORIS JEAN—B.A.

Major—English; Cougar Collegians; French Club; Red Masque Players.

KIRK, WILLIAM—B.S.

Major—Engineering; Engineering Society.

KIHNEL, MYRTLE CLAIR—B.S.

Major—Education.

KIRKPATRICK, JIMMIE—B.B.A.

B. A. Club; B. S. U.; Spanish Club.



LARIMER, SUZANNE—B.A.

Major—English; Cougar Collegians, 38, 39, 40, 41;
French Club, 39, 40, 41; B. A. Club, 39, 40, 41;
Glee Club, 39, 40, 41; Mayfete, 40, 41.

McLAUGHLIN, JOHN P.—B.B.A.

McMILLAN, DELPHENE—B.S.

Major—Education.

MARSHALL, RUFUS

MAZOW, EDYTHE—B.S.

Major—English; French Club; Red Masque Players;
Buckaroos.

MILLSAP, STUART—B.S.

Major—Engineering.

MILLSTEAD, EARNESTINE—B.S.

Major—Government; B. A. Club.

MORGAN, ERSULA—B.S.

Major—Business Administration; B. A. Club; Student
Assembly; Buckaroos; Cougar Collegians; Red Masque
Players; Mayfete, 41.

NEUMEYER, ESTHER—B.S.

Major—Education.

O'BANION, ROBERT WILLIAM—B.B.A.

Major—Banking and Finance; B. A. Club; Secretarial
Club; Accounting Society.



O'BRIEN, PATRICIA—B.S.

Major—Business Administration; Cougar Collegians, 38, 39, 40, 41; B. A. Club; Junior Class Sec., 40; Mayfete, 40, 41; Junior Prom Queen, 40; Red Masque Players.

PARKER, WILLIAM HOWARD—B.S.

Major—Education.

PETERSON, WEED L.—B.A.

Major—Economics; Sophomore Council Representative, 39; Student Assn., V. Pres., 40, Pres., 41; Honorary Activity Society, 40; V. Pres., B. A. Club, 40; Outstanding People, 40; Latin American Institute, 40, 41.

PHALEN, EILEEN MARIE—B.A.

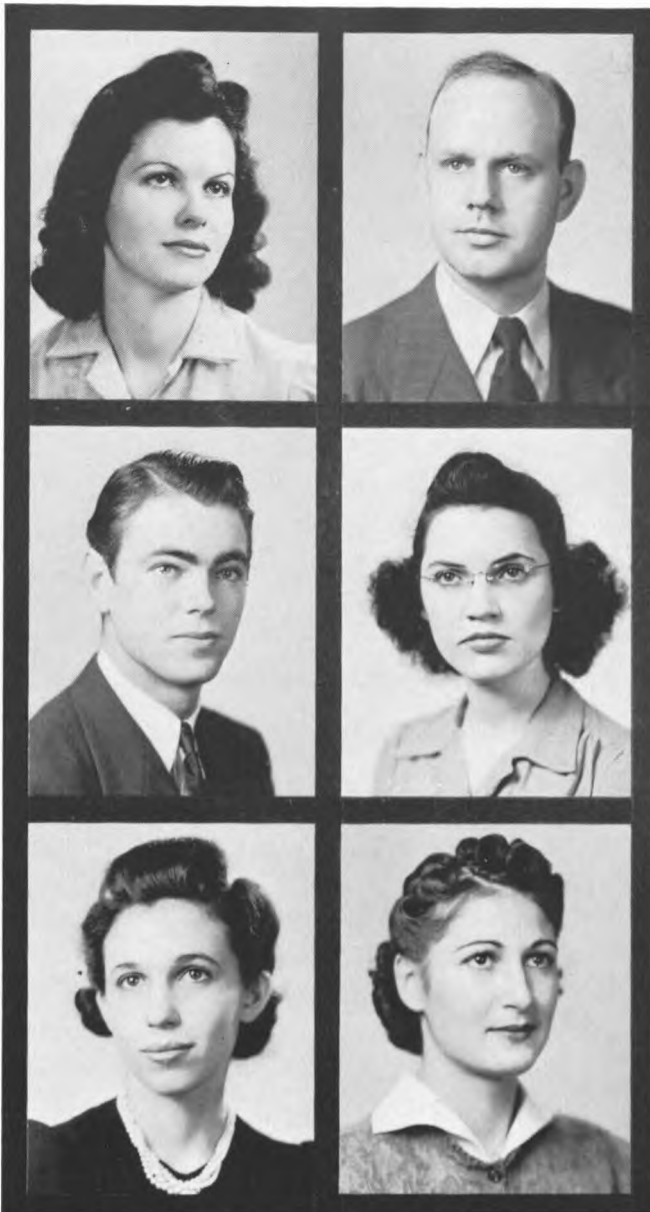
Major—Chemistry.

PRIDGEN, LOUISE—B.A.

Major—English; Cougar Editor, 39, 41; Houstonian Asst. Editor, 39; French Club, 38; Red Masque Players, 39; Student Council, 39; Student Assembly, 41.

PUCCIO, ANGELENA—B.S.

Major—Physical Education.



RISINGER, LEWIS—B.S.

Major—Social Science.

ROBB, CLARENCE MITCHELL—B.S.

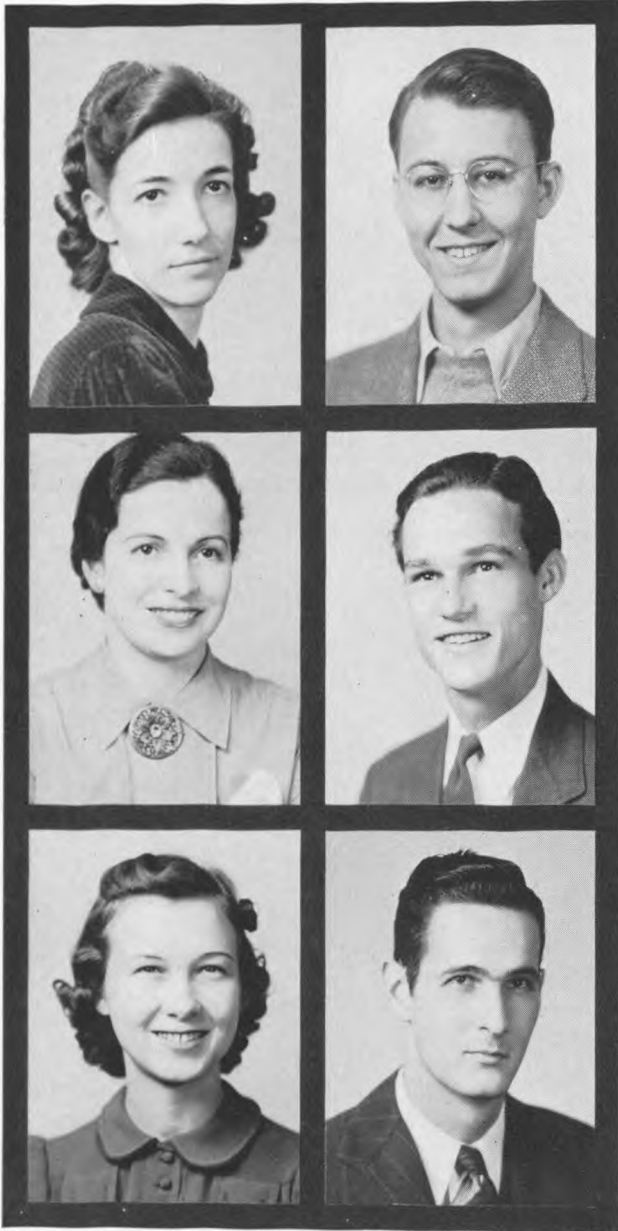
Major—Engineering.

RULFS, CARMEN LUCILLE—B.S.

Major—Education.

RYEMON, SYBIL THELMA—B.S.

Major—English.



SCHNURR, GLADYS ISABELLE—*B.A.*
Major—History; Cougar Collegians; Spanish Club.

SCHOTT, HERBERT JOSEPH—*B.B.A.*
B. A. Club; Pre-Law Club; Student Assembly.

SCHWECKE, MRS. MADELINE—*B.A.*
Major—Education.

SHINN, BOYD CLIFTON—*B.B.A.*
Pres. Squires, 39; Pres. B. A. Club, 41; Outstanding People, 40.

SKIPPER, MRS. KATHRYN—*B.S.*
Major—Education.

SMITH, H. LESTER—*B.B.A.*

STALLINGS, FLORA LOUISE—*B.S.*
Major—English; Cougar Collegians; Red Masque Players.

TAUB, HENRY—*B.B.A.*
Outstanding People, 40; V. Pres. Engineers, 40; Foil Club, Pres., 40; Pre-Law; Vice-Chairman Frontier Fiesta, 40.

TRITICO, MRS. FLORA—*B.A.*
Major—Education.

URBANTKE, LILLIAN HORTENSE—*B.S.*
Major—Education; Pre-Medical Society.



VAN VELZER, MARY

WALSER, CHARLOTTE MARIE—B.B.A.

Major—Secretarial Training; Red Masque Players;
Student Assembly; Glee Club; B. A. Club; Secretarial
Club.

WATSON, WINNONA EILEEN—B.S.

Major—Health Education.

WOOD, MRS. ROBBIE L.—B.S.

Major—Education.

WOLFER, WILLIE MAE—B.S.

Major—Education; Buckaroos.

YERXA, THOMAS MATTESON—B.S.

Major—History; Freshman V. Pres.; Sophomore Pres.;
B. A. Club; V. Pres. Student Council; Public Speaking
Club; Debate Club.



JUNIORS

C
L
A
S
S

O
F
F
I
C
E
R
S

DAY SCHOOL

President FRANK ZETO
Vice President THOMAS W. MENEFEE
Secretary GRACE KELLER
Treasurer NEVILLE POWELL

NIGHT SCHOOL

President FRANK WALKER
Vice President WERNER HEESCHE
Secretary JOSEPHINE HIGHTOWER
Treasurer ERNIE McASHAN

Alders, Lois Lillian
 Anderson, Shirley Jane
 Atkinson, Norman



Baillio, Lorraine
 Bart, Genevieve
 Bay, Peggy Jean

Bayless, Frank
 Bilnoski, Rose Lee
 Bond, Kathryn

Botts, Robert
 Brigance, Alece
 Brown, Louise



Buckner, Chester
 Buescher, Charles
 Butler, Louise

Campbell, Ray
 Chelf, Alpha Ruth
 Clayton, Estelle



Colby, Frank
 Collier, Della Belle
 Craven, Richard

Cuny, Gene
 Dailey, Dorothy
 Dailey, Levens

Davis, Edward
 Davis, Eunice Mosette
 Dee, Mary

Del Costillo, Gloria
 Dennis, Mary Elizabeth
 Diener, Lurline

Dubinsky, Sylvan
 Ellis, Jane
 Finney, James

Flanagan, Mary Anne
 Foster, Claire
 Fuller, Alice



Gennusa, Leonard
 Gillies, Kieth
 Gohlman, Harry David



Gracey, Cleo Clair
 Griffith, William
 Hanovich, Toby



Harbordt, Fred
 Heesche, Werner
 Hickernell, Mary



Hickerson, John Fletcher
 Hightower, Josephine
 Hodge, Billy



Homer, Joe
 Ilfrey, Jack
 Jett, Sarah

Jonas, Russell
 Jones, Alice Sue
 Jones, Mary Frances



Kaplan, Roselle
 Keller, Grace
 Kietzman, Patricia

Kuhn, Herbert
 La Cavera, Philip
 McCain, Jean

McKenney, Frank
 Mabry, Mary Gene
 Manry, John Thomas

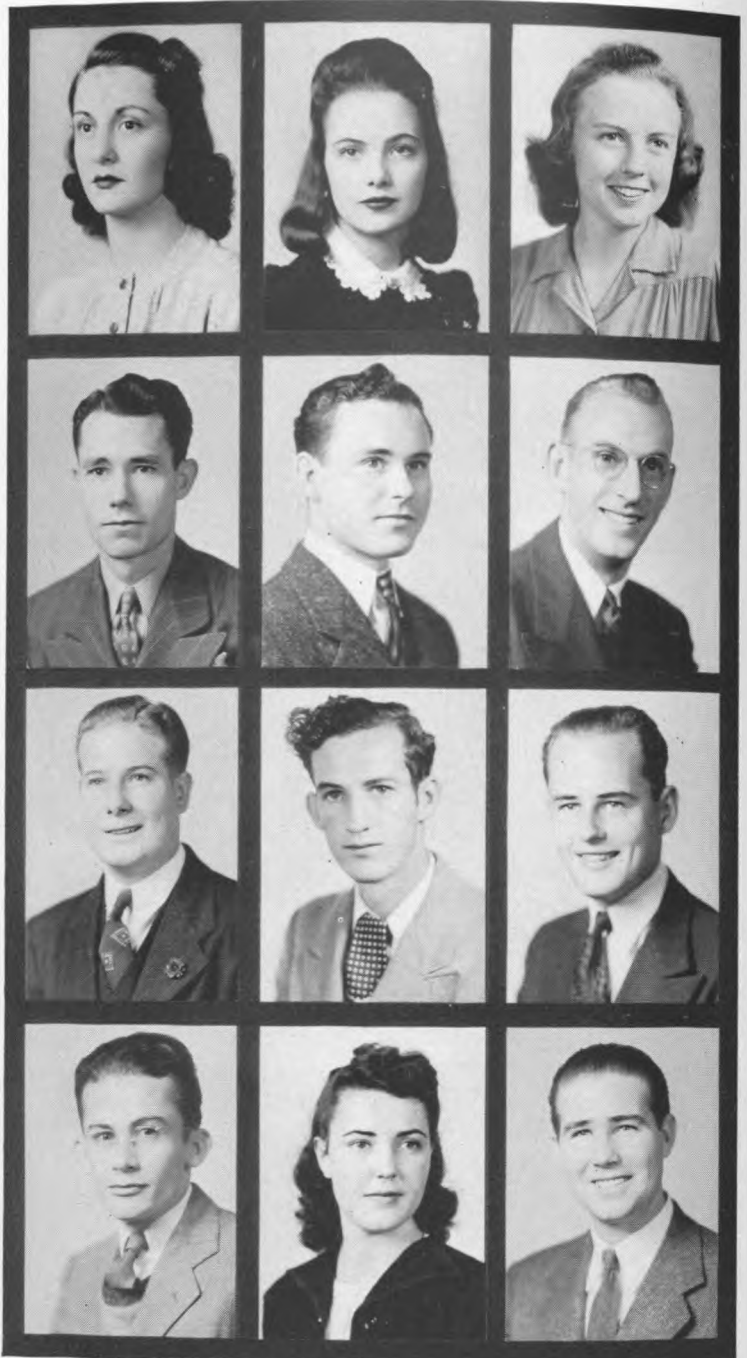
Menefee, Thomas
 Miller, Margaret
 Mills, Arthur

Moffatt, Robbie Mae
 Molesworth, Eleanor
 Moore, Berkley

Moore, Marion Margaret
 Moore, Robert
 Moore, Thomas



Morgan, Susan Vern
 Muhl, Hazel
 Parkers, Lillian



Peevey, Rodney Francis
 Potter, Joe
 Powell, Neville

Schoppe, Conrad
 Smith, Clarence
 Smith, Ralph

Stewart, John Paul
 Stone, Evelyn
 Stovall, O. A.



Strom, Regina
 Sullivan, Robert
 Summers, Rosemary

Tennant, Robert
 Todd, Evelyn
 Lowell, Billy



Trotter, James

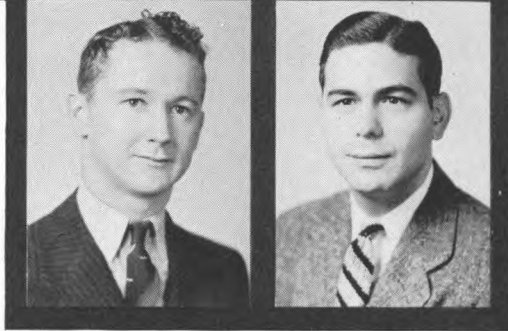
Turner, Mary

Tynes, Mary Faye

Wadley, Pattye Jayne

Walker, Frank

West, Henry Clopton



Wier, Robert

Zeto, Frank

SOPHOMORES

C
L
A
S
S

O
F
F
I
C
E
R
S

DAY SCHOOL

President CHARLES SAUNDERS
Vice President BILLY STROUD
Secretary ROSEMARY PELLERIN
Treasurer MARY JO HOGAN

NIGHT SCHOOL

President JOHNNY GOYEN
Vice President RUSSELL F. GOFF
Secretary LYDA MURRELLE
Treasurer CARL HOUSTON



Adams, Lloyd
 Allen, Joe
 Alston, M. K., Jr.

Babcock, Genevieve
 Bachman, Dick
 Baggett, Anna Jacquilyn

Baldrige, Beverly
 Barabach, Walter
 Barron, Lovelle

Beaman, Ray
 Belk, Helen
 Berry, Frank

Bowen, Marysue
 Boyd, Minnie Ruth
 Bratten, Johnny

Brinkman, Willie
 Britton, Helen
 Brookshier, Betty



Bryant, Virginia

Bunjes, John Vernon

Buschardt, William



Butler, Winona

Cannon, Harold

Capdeville, William Lee



Carr, Mildred

Cire, Dorothy

Clark, Milford

Conaway, Majorie

Condon, Robert

Collins, Robert

Cornwell, Glenn

Carven, Marguerite

Crouch, Jean

Daly, Jack

Davis, Bette

Davis, Chester



Davis, Dorothy
 Dodson, Jonel
 Dold, Frances

Dumas, Harold
 Engdohl, Dorothy Lee
 Epperson, Virginia Anne

Estill, Bettie
 Evans, Francis
 Flanagan, Lou Anne

Flesher, John
 Freeman, Robert
 Gallagher, Elizabeth

Galny, Velma
 Gentry, Arva
 Goff, Russell

Gould, Laura Jane
 Goyen, Johnny
 Grammier, Fred



Gray, Marjorie
 Grubbs, Ray
 Gunter, Thomas

Hammersmith, Harris
 Harrington, Jerry Marie
 Haubelt, Vivienne



Healy, Pat
 Hightower, Florence
 Hockmeyer, George

Hogan, Mary Jo
 Hooper, Martha Jane
 Horn, Jimmie

Houston, Carl Preston
 Humphreville, William
 Jeppesen, Donald

Joneson, Wilbur
 Joyce, Bruce
 Ketteringham, Billie Jane



King, Marie
 Kirk, Joy Esta
 Konken, Jane

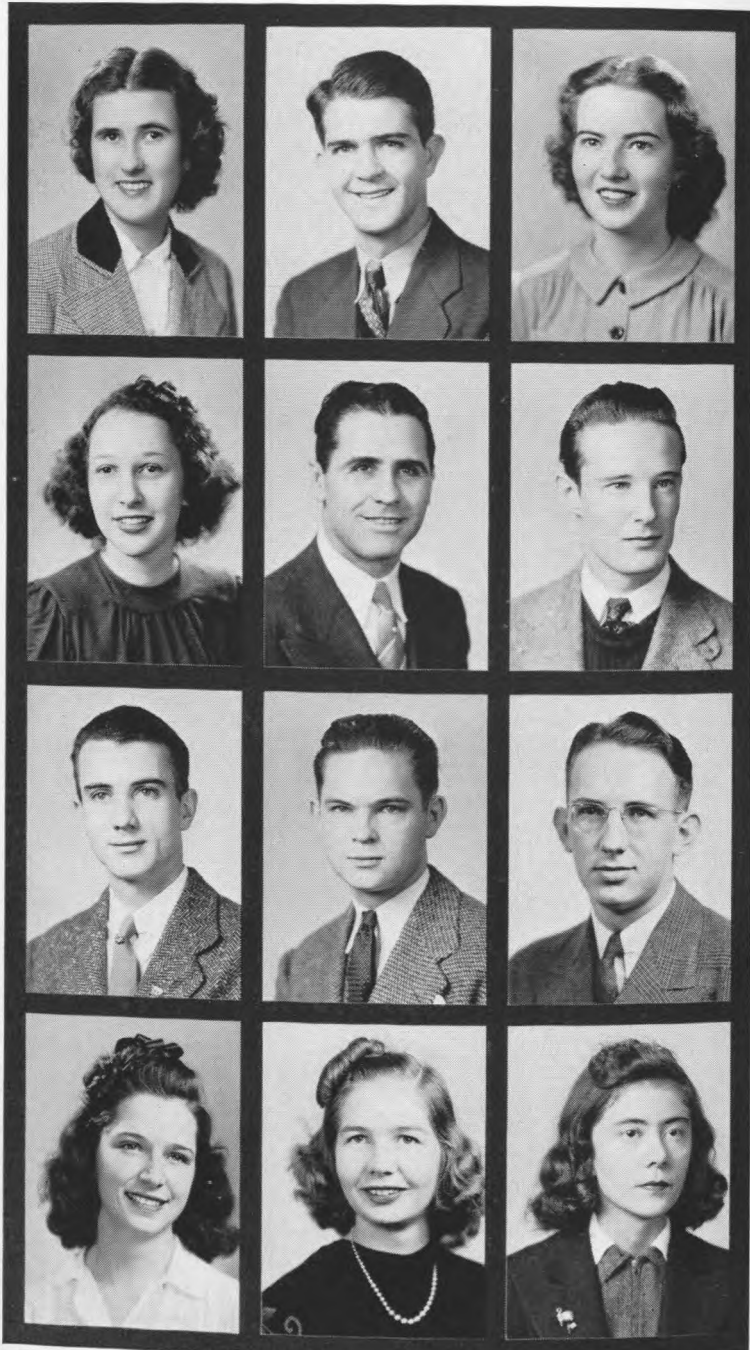
Krenek, Lillian
 Kuhleman, Jane
 Leinweber, Gerald

Lekebusch, Ilse Marie
 Le Marie, Alphonse John
 Lester, Bettie

Litowich, Jacqueline
 Lopez, Cruz
 Love, Jack

McBride, Frank
 McClellan, Leroy
 McGinty, Charles

McLeeland, Elizabeth
 Mach, Doris
 Manry, Mary



Mayes, Johnnie Irene
 Maynard, Frank
 Meine, Frank



Meredith, Anita
 Miller, Charles William
 Miller, Charlsie



Minahan, Joseph James
 Mitchell, Antoinette
 Moore, John

Moore, Helen
 Morgan, James
 Morgan, Margaret

Murrelle, Lyda
 Nelson, Oscar
 Neubauer, C. A.

Nice, Mary Margery
 O'Kelly, Elsie
 O'Leary, Bob



Oliver, Thelma Joyce
 Parker, Charles
 Pellerin, Marian

Penick, Robert Frank
 Perkins, Darold
 Peters, Jane

Plummer, Ralph
 Pollard, Katherine
 Porter, Doris

Porter, Lloyd
 Pyndus, George
 Rankin, Helen

Reinhard, Edward
 Rogers, Mary
 Rogers, William

Ruthenbeck, Evelyn
 Sanders, Hazel
 Sanford, Geneva



Saunders, Charles
 Sawtelle, Ermina May
 Schill, Richard

Schmitt, Robert
 Schott, Lois Mildred
 Schuhmacher, Inez



Schwecke, Norma Jean
 Semaan, James
 Simes, Ned Edward

Sims, Ruth
 Sligh, Leighton Ralston
 Smith, Frances

Smith, Jackson B.
 Smith, Muriel
 Sorelle, Laura

Sparr, Bill George
 Sprague, William
 Stakemiller, Dorothy



St. Cyr, Georgia
 St. Cyr, Leroy
 Stroud, Billy

Sutherland, John
 Taub, John
 Tenney, June

Thickstun, Hazel
 Thornton, Glenera Ray
 Thischer, Eloise

Tritico, Leonard Frank
 Tyler, John
 Upchurch, Jerry

Valenti, Jack
 Walker, George
 Wallace, Dickson Elliott

Waters, Marianne
 Weaver, Ruby
 Weinberg, Adolph



Wever, Wanda
Wilburn, Paul
Wilhoit, Bill



Wilkinson, Lawrence
Williams, Charles
Williams, Ruth



Winkelman, Edward
Wolff, Leota
Woodburn, Robert

Wright, Robert
Wyatt, Mary
Wynne, Gloria

Zurborg, Edna

FRESHMEN

C
L
A
S
S

O
F
F
I
C
E
R
S

DAY SCHOOL

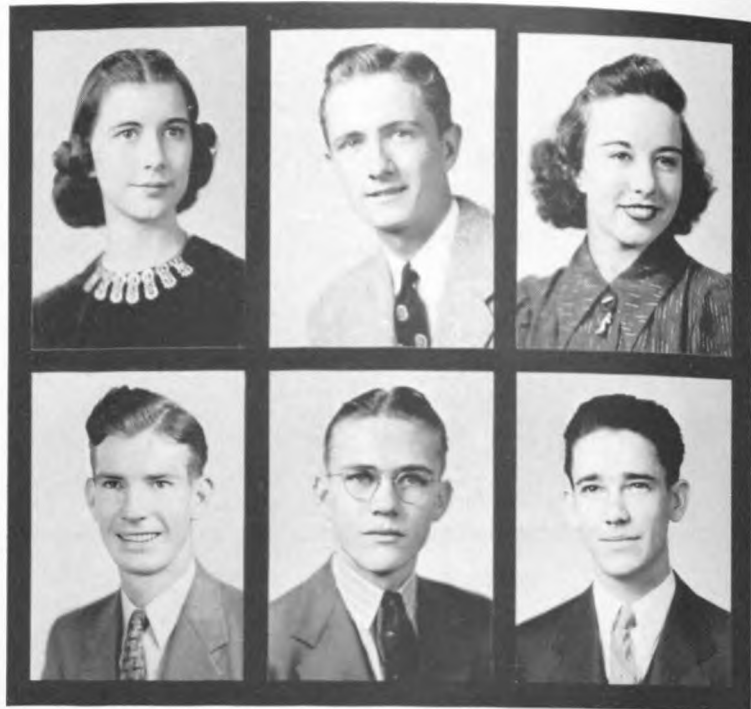
President CLIFTON SHELTON
Vice President FRANCES TREMAINE
Secretary BOOTS MERRITT
Treasurer JERRY ANDERSON

NIGHT SCHOOL

President BILL FULLICK
Vice President H. C. HALEY
Secretary PAMELA WOODS
Treasurer GENE REDMAN

Abrego, Betty
 Adams, Jud Lee
 Akin, Earlene

Alexander, Lloyd
 Allen, Bradford
 Allen, Johnny



Anderson, Geraldine
 Anderson, Norma Faye
 Anthony, Mary Lee

Baker, Jack
 Baether, Marion
 Banta, Becky

Barnes, Leatrice
 Baston, Emma Lee
 Bell, Boris

Bell, John
 Belles, Geraldine
 Bering, Charlene



Black, Horace
 Blaibe, Rogar
 Blair, Jane

Bliven, Dayton Avery
 Bonar, Howard
 Brinkman, Vivian

Bruecker, Marcillo
 Bundy, Margaret
 Calhoun, Bill

Canniff, L. J.
 Carder, June
 Cardiff, Bill

Carr, Dorice
 Carrigan, John
 Castle, Jack

Cayton, Doris
 Chastian, Carlin
 Childress, Betty Jane



Clark, Leon
 Clevenger, Marie
 Cobb, Emogene

Coffman, Dorothy
 Combs, Jack
 Conroy, Charles



Cooper, Dorothy
 Creighton, Mary Ann
 Cutting, Robert

Davis, Patricia
 Del Costello, Helen
 Dement, Hazel

Dillard, Mildred
 Dowell, Bonnie Jean
 Drake, Mary Ann

Dues, Rosemary
 Duke, Lila
 Dunn, Abe



Dunn, James T.
 Dunn, Katherine
 Elsbury, Edith

Fagan, Jacquelyn
 Farmer, Charles
 Flocke, Otto Robert

Foster, Thomas
 Fullick, William Garland
 Gaines, Amy

Gamble, Clyde
 George, George
 Geldert, Margaret

Giuffre, Sam
 Glaros, Elizabeth
 Goot, Irwin

Griffith, Hester Jane
 Grissom, Lavergne
 Hackley, Alice



Haden, Charles
 Halverton, Helen Marion
 Harris, Edwin

Hartman, Mary
 Hartwig, Victor
 Harvey, Yolande June



Heiman, Jane
 Hendrix, Frances
 Hendrix, Lenore

Hermann, Athalie
 Hickens, Hedley
 Hilton, Dorothy Ray

Hope, Harry
 Hotl, Lucille
 House, Mildred

Hrivnatz, Esther Virginia
 Hurley, Barbara Lee
 Hurley, Kathryn





Jackson, Louise
 James, Lawrence
 Jensen, Frances

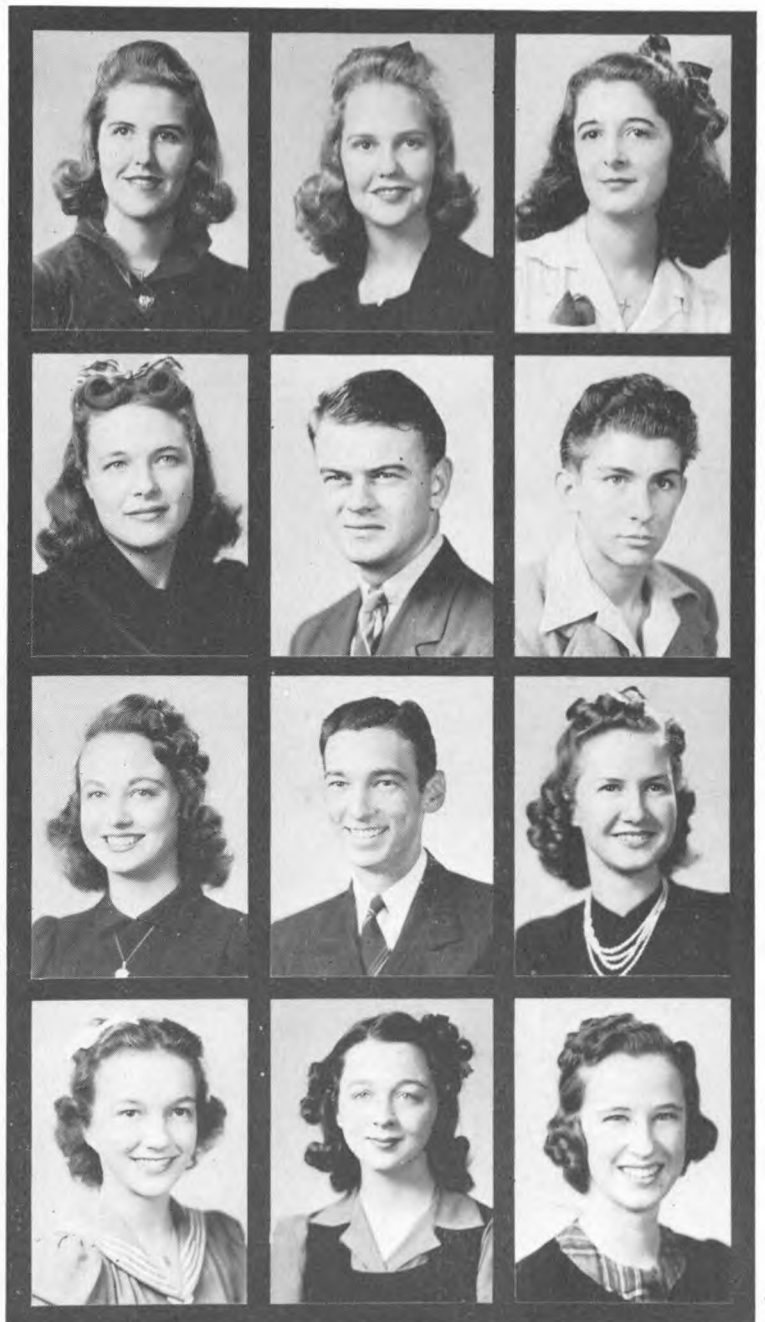
Jercik, Robert
 Johnson, Catherine
 Johnson, Corinna

Jones, Carol
 Jones, June
 Jones, Margaret

Karn, Elizabeth
 Kelly, George
 Kietzman, Maurice

Kincannon, Lorene
 Lander, Estis Durwin
 Leigh, Virginia

Leverett, Lynn
 Linnenberg, Evelyn
 Lippold, Shirley



Little, Lena Joyce
 Lobit, Joe
 Lockard, Justa Emma

Lohse, Alan
 Long, Eugene
 McConnell, Margaret



McCorkle, Paul
 McGehee, Elizabeth
 McQuhae, Charles Allen

McTernan, Ada Katheryn
 Maddox, Marilyn
 Manahan, Florence

Mangum, Evelyn Bliss
 Mann, Hegrietta Anno
 Martin, Sidney

Mast, Granville
 Medillin, Antoinette
 Merritt, Hazel





Monaghan, Norma
 Montgomery, John
 Montgomery, Joyce

Morgan, Leon
 Morton, Beulah
 Mulvey, Eleanor

Myrick, Johnnie Lou
 Norman, James
 O'Brien, Virginia Lee

O'Connor, Frances
 Olson, Albert
 Owens, Bernice

Paley, Hyman
 Parson, Warren Hill
 Person, Betty Marie

Pickel, Jane
 Poerschke, Vernon
 Powell, Gloria Ann



Pressley, James

Quast, John

Quinn, Hazel

Ramsey, Frank

Ramsey, Nena Juanita

Ridley, Thomas



Robb, Harold

Roberti, Virginia

Ross, Shelby

Rourke, Patricia

Rymal, George

Sayre, Marjorie

Schoen, Robert

Segelquist, John

Shane, Jennie Lee

Shaw, Gladys

Shelton, Clifton

Sherfy, Lois Marie



Sherrod, Jeanne
 Shindler, Owen
 Shindler, Wilma

Shropshire, Kenneth
 Simms, Edward
 Sims, Sarah Lee

Singleton, Mary Edna
 Smith, Dor Lee
 Smith, Edna Mae

Smith, Roscoe Falvey
 Spencer, Jerry
 Spradley, Edgar

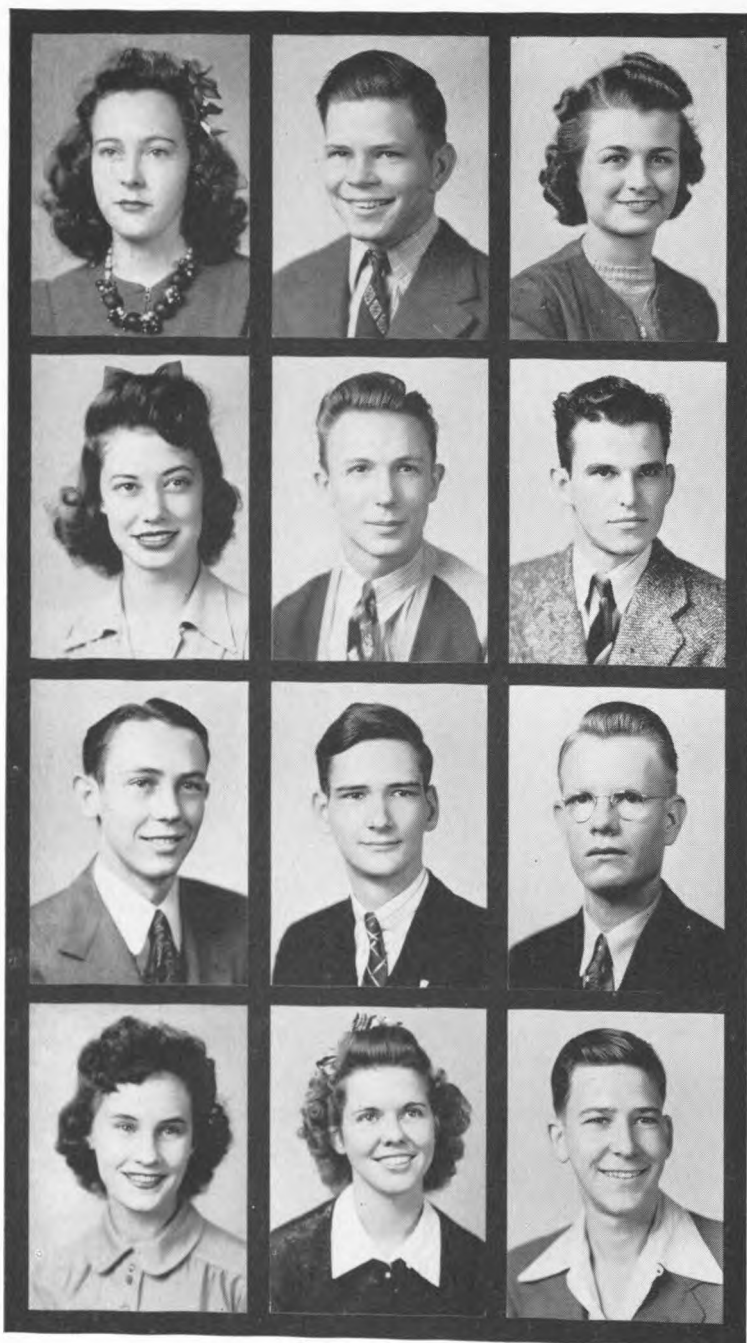
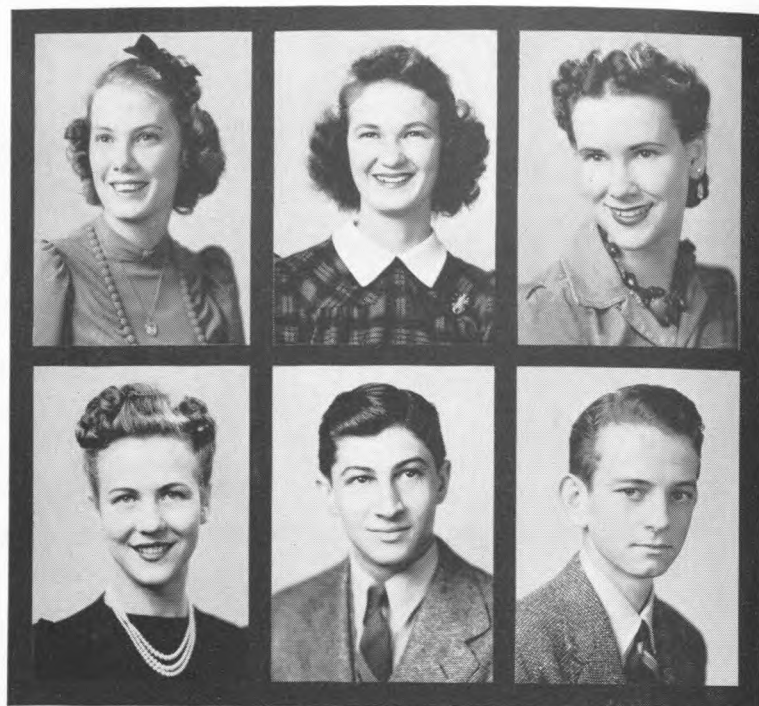
Sprawls, Harold
 Steighan, Billie
 Stephenson, Virginia

Steward, Jack
 Sturgis, Madelyn
 Tharp, Phillip, Jr.



Thickstun, Bernice
 Tibbitts, Jean
 Tobola, Nelrose

Tremaine, Frances
 Troncole, Michael Charles
 Tuffly, Joseph



Tuffly, Rose Marie
 Urquhart, Jackson
 Van Hekken, Ruth Mae

Ware, Doris
 Watson, Arthur
 Whisenhart, Paul

White, Sam.
 Wilder, Erwin Gabbert
 Willborg, Wesley

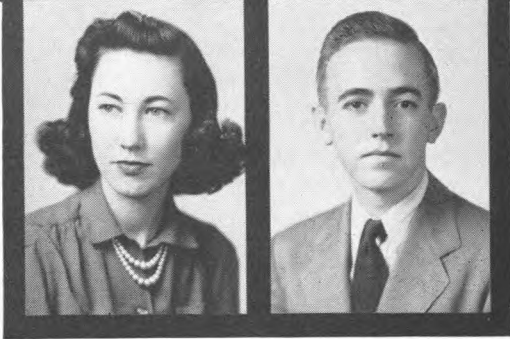
Williams, La Velle
 Williamson, Louise
 Wilmeth, Jack



Wilson, Christine

Wood, Emily

Woodburn, Mary Jane



Wright, Beth Louise

Zagst, Joe



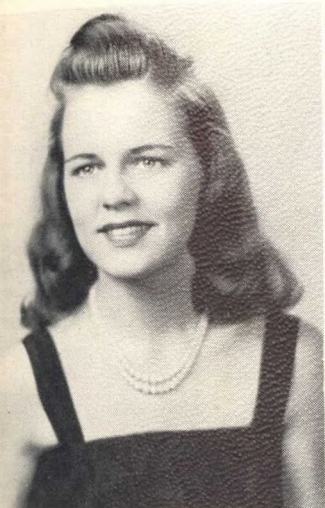
VANITY FAIR
Pattye Jayne Wadley
FAVORITES



Pattye Jayne Wadley



Athalie Hermann



Geraldine Anderson

Lenore Hendrix

Willie Mae Wolfer

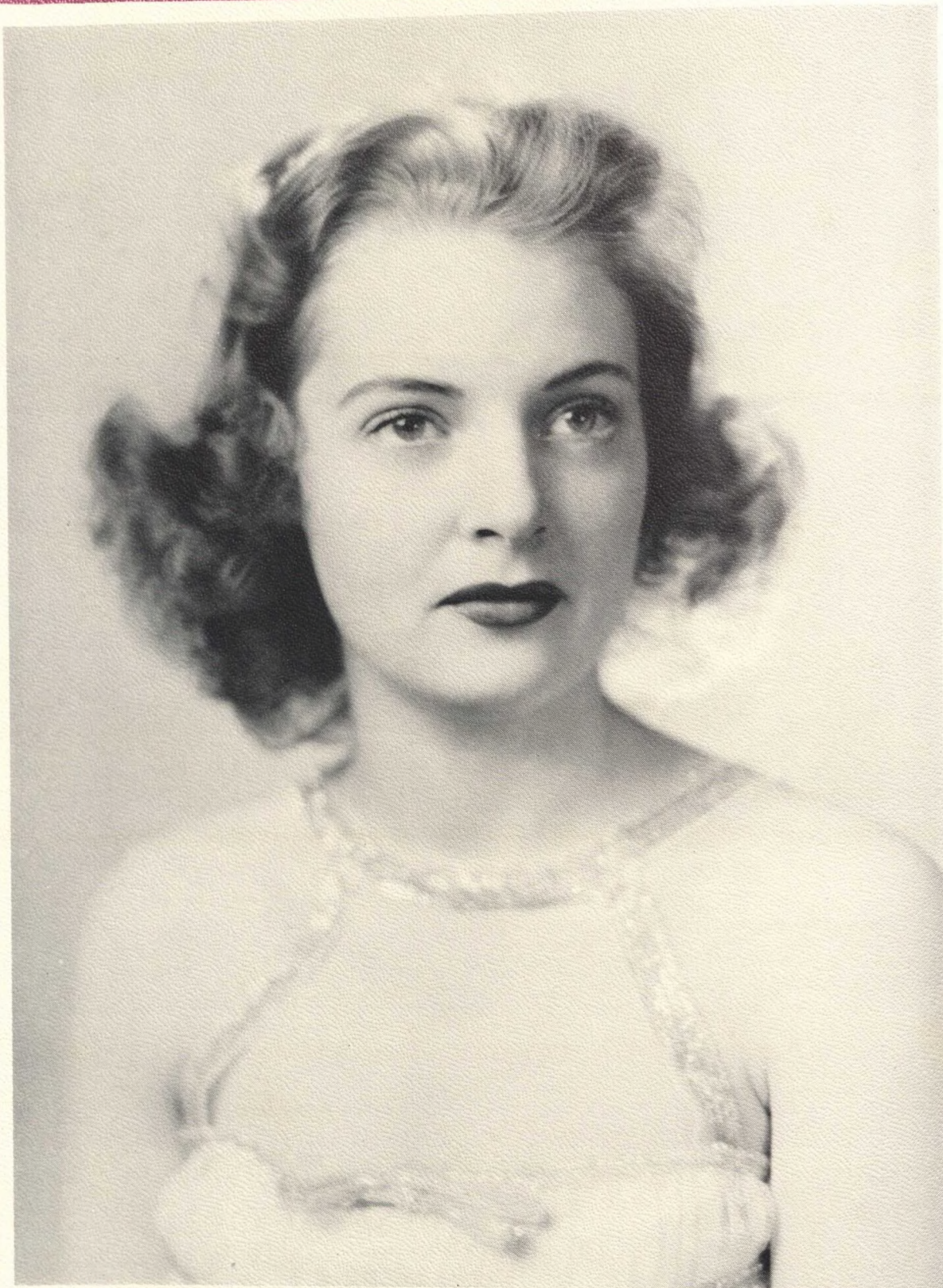
Frances Tremaine

Mary Ann Drake

Alece Brigance

Beatrice Williams

Bonnie Boysen



Beverly Baldrige



Winona Butler

Gladys Downey

Charlene Bering

Gladys Shaw

Jeanne Sherrod

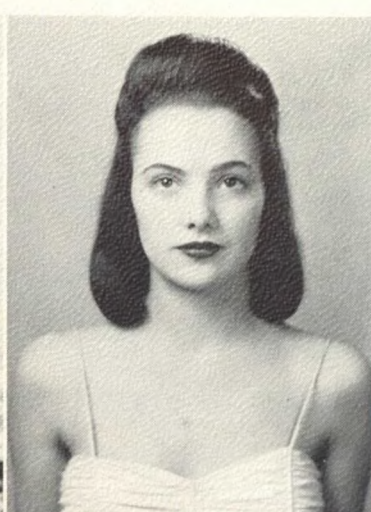
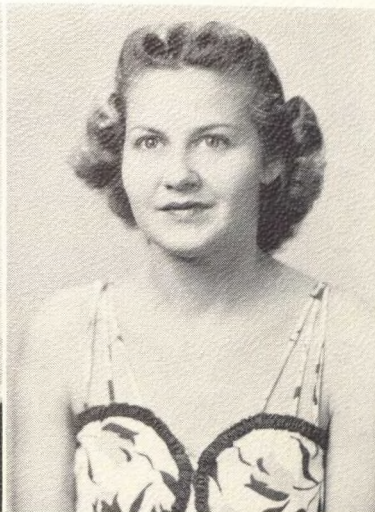
Norma Jean Schwecke

Robbie Mae Moffatt

Marie King



Della Belle Collier



Charlotte Forester

Edith Elsbury

Georgia St. Cyr

Hazel Muhl

Dorothy Stakemiller

Marjorie Sayre

Vivienne Haubelt

Margaret McConnell



Louise Butler



Eleanor Mulvey

Nena Conn

Johnnie Lou Myrick

Mary Dee

Virginia Bryant

Mary Jane Woodburn

June Zehner

Bettie Lester



Vivian Brinkman



Doris Ware

Hazel Dement

Ginger Roberti

Eleanor Molesworth

Bernice Owens

June Jones

Lovelle Barron

Patricia O'Brien



Estelle Clayton



Helen Rankin

Dorothy Cire

Marilyn Maddox

Mildred House

Hazel Merritt

Alice David

Susan Vern Morgan

Marie Clevenger



Gloria Powell



Jane Kuhleman

Jane Blair

Rose Marie Tuffly

Jennie Lee Shane

Mary Turner

Gloria Del Costillo

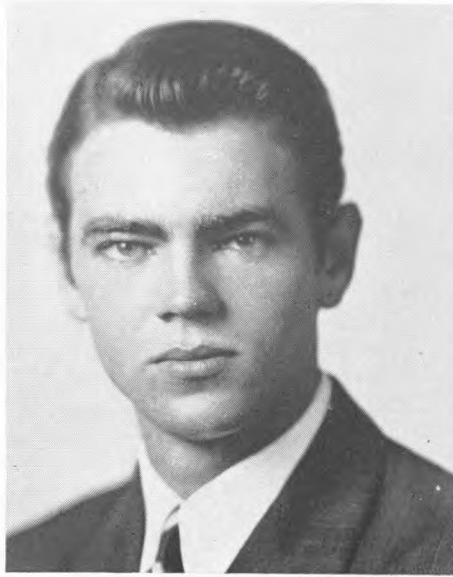
HONOREES

HONORARY ACTIVITY SOCIETY



Alice David, Elizabeth Carlon, Louise Butler, Lela Blount, Bettie Hays, Weed Peterson, A. C. Murrelle,
Henry Taub, Bill Williams, Billy Miller, Charles Brigance, Ray Campbell, Gene Cuny, Tom Yerxa,
Will C. Gay

The Honorary Activity Society was organized by the Student Council in the fall of 1940, and the charter members selected by the activity committee of the faculty. Its purpose is to recognize those students, who by their display of school spirit, character, and personality exercise most influence on student affairs and extra-curricular activities. Senior and Junior students only are eligible for election and must have been on the campus at least two years. New members are elected in the spring to fill vacancies left by graduating seniors in the membership of fifteen.



WEED L. PETERSON
Student Government



RAY CAMPBELL
Student Government



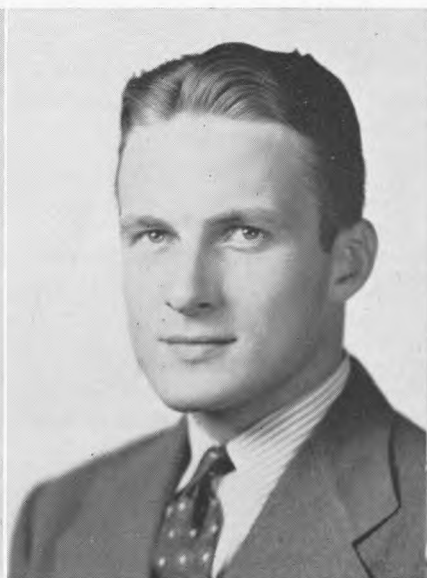
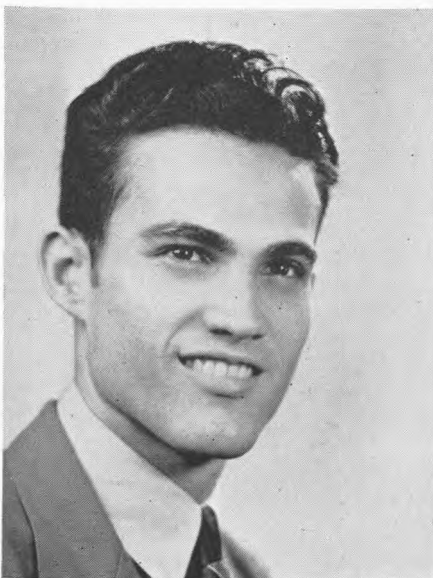
JACK VALENTI
Student Government

OUTSTANDING PEOPLE 1941

CHARLES BRIGANCE
Activities

TOM YERXA
Activities

ALAN LOHSE
Activities





ALICE DAVID
Activities



ELIZABETH CARLON
Activities



LOUISE BUTLER
Activities

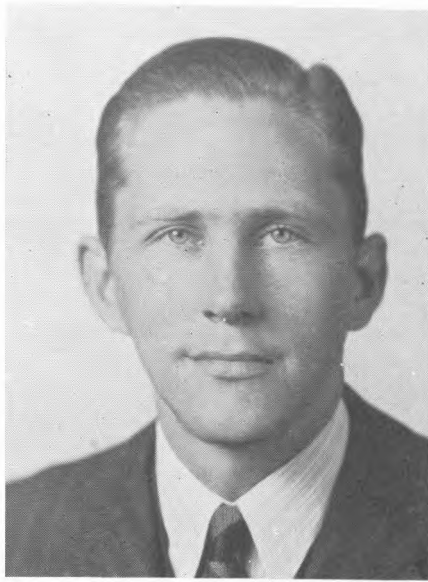
OUTSTANDING PEOPLE 1941

LEE KEDING
Scholarship

ARTHUR POXON
Scholarship

ASA MARTIN
Scholarship





BILLY W. MILLER
Publications



RALPH WILSON
Art



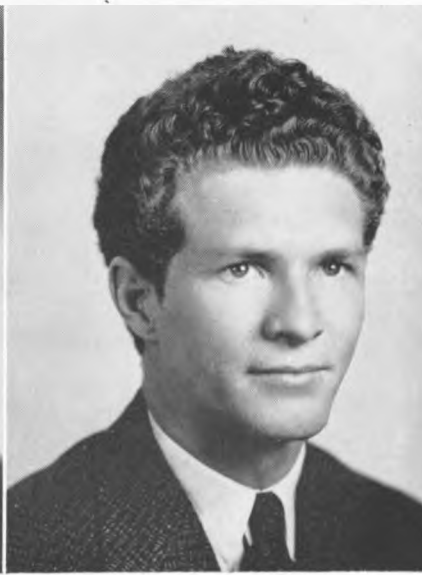
CHARLES SAUNDERS
Dramatics

OUTSTANDING PEOPLE 1941

GENE CUNY
Activities

JOE KOPPEL
Activities

KING STEWART
Activities



PUBLICATIONS



VAL JEAN McCOY
Instructor in Economics
Houstonian Advisor

FACULTY ADVISORS

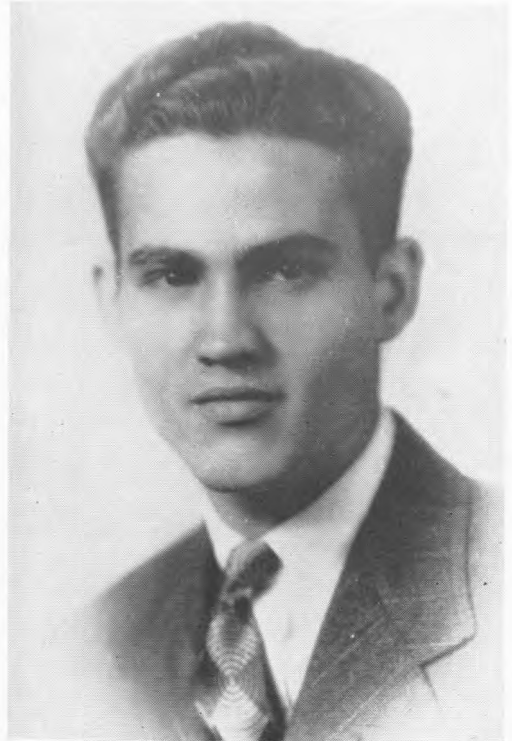


N. K. PATTERSON
Director of Public Relations
Cougar Advisor

THE 1941 HOUSTONIAN



BILLY MILLER
Editor



CHARLES BRIGANCE
Business Manager

STAFF

<i>Editor</i>	BILLY W. MILLER
<i>Business Manager</i>	CHARLES BRIGANCE
<i>Assistant Editor</i>	JOE POTTER
<i>Assistant Business Manager</i>	NEVILLE POWELL
<i>Faculty Advisor</i>	VAL JEAN McCOY
<i>Associate Editor</i>	ALICE DAVID
<i>Clubs</i>	FRANK McKENNEY
<i>Photography</i>	FRANK COLBY
<i>Advertising Sales</i>	WILLIAM BUSCHARDT
<i>Advertising Sales</i>	HAROLD SPRAWLS

JOE POTTER
Assistant Editor

NEVILLE POWELL
Assistant Business Manager



Much work has been put into this book to leave some of the memories of the past year in a permanent form. I wish to thank the members of my staff for their timely efforts in bringing about the creation and publication of this 1941 Houstonian.

Acknowledgement goes to Louise Butler, Hazel Dement, Jerrie Anderson, Rodney Alsup, Weed Peterson, and Ralph Miller, all of whom have helped immeasurably, many times.

My deepest appreciation to P. J. Sterne, whose experience and help in composing this annual was inspiring and indispensable.

To Joe Potter and Neville Powell for a bit of good luck and best wishes for yearbook production in 1942.

The proof of our work and your past school year activities are pictured herein. May they meet with your approval and satisfaction.

BILLY W. MILLER
Editor

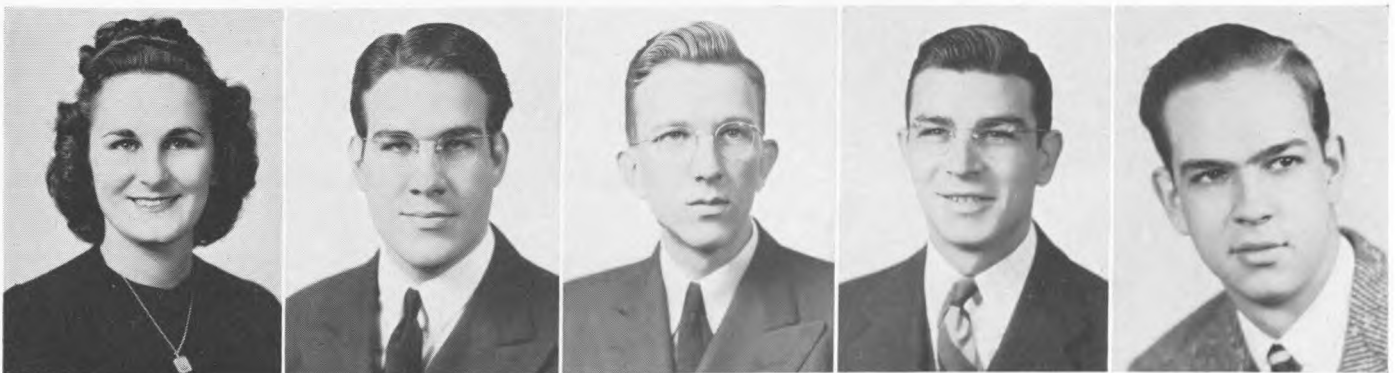
DAVID

McKENNEY

COLBY

BUSCHARDT

SPRAWLS



THE COUGAR



PRIDGEN

ERVIN

FLANAGAN

STAFF

<i>Editor, First Semester</i>	LOUISE PRIDGEN
<i>Editor, Second Semester</i>	MARYANNE FLANAGAN
<i>Business Manager</i>	ROGER N. ERVIN, JR.
<i>Associate Editor, Day Copy</i>	VELMA GALNY
<i>Associate Editor, Night Copy</i>	GENE CUNY
<i>Departments Editor</i>	HELEN MOORE
<i>Literary Editor</i>	GLENERA THORNTON
<i>Rewrite Editor</i>	JANE PETERS
<i>Exchange Editor</i>	DOROTHY LEE ENGDOHL
<i>Advertising</i>	{ MARY LEE PYLE G. H. GALNY

REPORTERS

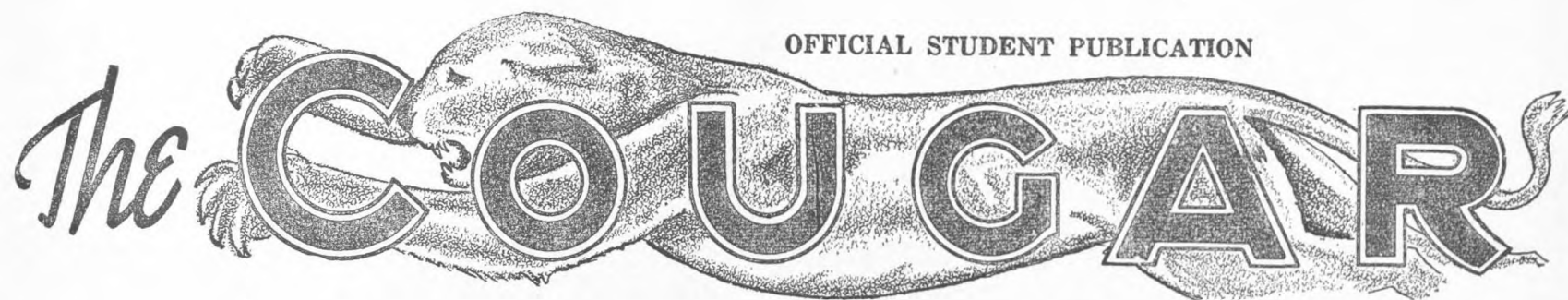
<i>Campus</i>	{ JO KATHRYN SCHMIDT DOLLY LOU ROSE
<i>Columns</i>	{ BILLY MILLER JACK VALENTI KING STEWART JACK DALY FRANK McKENNEY
<i>Photographer</i>	FRANK COLBY
<i>Sports</i>	WILBUR JONESON

MEMBERS JOURNALISM

George Miller	Eleanor Molesworth	Clopton West
Dorothy Cire	Newell Tilton	Hazell Quinn
Mary Van Velzer	Moselle Jacobs	Albert Bower
Suzanne Mortlock	Mary Alice Jefferis	Nena Ramsey
	Leota Wolff	

OFFICIAL STUDENT PUBLICATION

The COUGAR



The COUGAR is the only student official newspaper on the campus. With the appointment of N. K. Patterson as Public Relations Director of the university and faculty advisor of the paper, a new policy was established setting up arrangements to have a new staff elected each semester. The editors and senior staff members will be selected from the Journalism classes, as the paper is the laboratory of the department.

The editors, Louise Pridgen for the first semester, and Maryanne Flanagan for the second, have done very much hard work on organization and training staff members to bring out a good paper every week.

The financial affairs of the COUGAR have been in the capable hands of Roger Ervin whose never ceasing energies have made possible several larger editions on special occasions.

A word of especial thanks and appreciation to John Scardino, the printer, and frequently unofficial editor-in-chief, for his liberal doses of good journalism applied genially to the staff during sessions making up on press night. Except for his friendly advice and assistance the path of the editors would have been considerably rockier than it was.

The staff was unstinting in its efforts in behalf of publicity for the Frontier Fiesta, and published the usual "big issue" of the year during the week of the fete, distributing several thousand copies to the visiting high seniors and other guests.

CLUBS



BUSINESS ADMINISTRATION CLUB

OFFICERS

<i>President</i>	BOYD SHINN.
<i>Vice-President</i>	ANDREW SHEBAY
<i>Secretary</i>	ALECE BRIGANCE
<i>Treasurer</i>	CHARLOTTE WALZER
<i>Sergeant-at-Arms</i>	CHARLES BUESCHER
<i>Student Assembly Representatives</i>	{ JOE POTTER ERSULA MORGAN





BUSINESS ADMINISTRATION CLUB

The B. A. Club enjoys the distinction of being the largest club on the campus. Organized in 1937 from the members of the Business Administration department, the club has had a steady growth under the advice and encouragement of the Faculty Advisor, Dr. Raymond Baldwin. As usual this year Dr. Baldwin entertained with several parties at his home, and the club sponsored a dance in the Cullen Auditorium in the first semester.

The year was closed with the annual banquet, and with the sponsorship of the Bingo booth at the Frontier Fiesta.



BUCKAROOS



Regina Strom
Dorothy Dailey

Ruth Crawford
Evelyn Ruthenbeck

Mary Grace Rogers
Jane Peters

OFFICERS

<i>President</i>	RUTH CRAWFORD
<i>Vice-President</i>	DOROTHY DAILEY
<i>Secretary</i>	REGINA STROM
<i>Business Manager</i>	EVELYN RUTHENBECK
<i>Historian</i>	MARY GRACE ROGERS
<i>Reporter</i>	JANE PETERS
<i>Faculty Sponsor</i>	HARVEY W. HARRIS

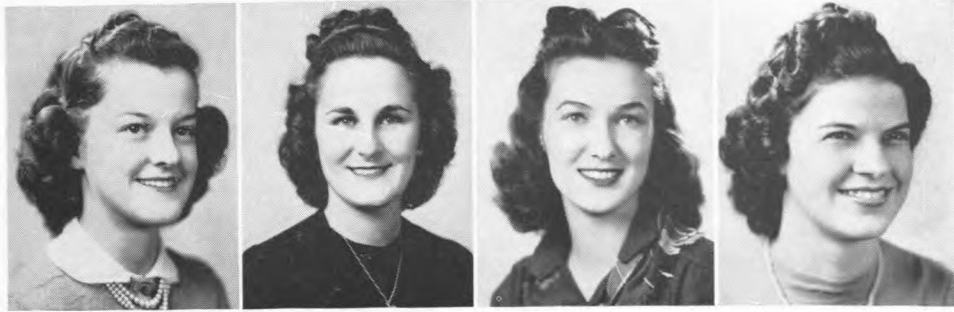
BUCKAROOS



The Buckaroos, the University of Houston Riding Club, started the year by representing the school in the Post Fall Fair, following this on November 3 with the formal initiation. A hayride and weiner roast were held in December shortly before the Christmas party. The annual participation of the club in the Houston Fat Stock Show included riding in the parade, a booth at the show, and the crowning of Dorothy Dailey as the Queen of the Rodeo and Horse Show.

The Round-Up Dance was held by the club March 7 at the Arabia Temple. A saloon booth was the Buckaroo contribution to the Frontier Fiesta, and the year was concluded with a trip to the spring horse show in Austin, and a trip to Bandera, Texas.

COUGAR COLLEGIANS



CARLON

DAVID

BUTLER

SUMMERS

OFFICERS

<i>President</i>	ELIZABETH CARLON
<i>Vice-President</i>	ALICE DAVID
<i>Second Vice-President</i>	JERRY ANDERSON
<i>Secretary</i>	LOUISE BUTLER
<i>Treasurer</i>	ROSEMARY SUMMERS
<i>Parliamentarian</i>	SUZANNE LARIMER
<i>Faculty Sponsors</i>	{ MRS. BESSIE EBAUGH MRS. PEARL C. BENDER DR. EBY McELRATH

COUGAR COLLEGIANS



First of the affairs given during the year by the Cougar Collegians was the tea in the Cullen Auditorium for all the girl students of the university. The Pearl C. Bender Memorial Flagstaff was presented to the school on October 2, and on October 6 a reception was held for new members of the club. The formal initiation was held late in October at the home of Dorothy Dailey. A cake dance in November, and the annual bay party at Casa Del Mar in December, together with the customary Open House, held this year at the home of Alece Brigance, closed out the year of 1940.

The big event of the year as usual was the formal "Cupid's Fling" at the Arabia Temple in February. Louise Butler was crowned Sweetheart. The style show was the feature of the Collegians at the Fiesta. The spring semester activities were closed with the annual Senior Luncheon held on the Rice Roof in May.

PRE-LAW SOCIETY

OFFICERS

First Semester

<i>President</i>	HALBERT BERRY
<i>Vice-President</i>	GENE CUNY
<i>Second Vice-President</i>	DICK SCHILL
<i>Secretary</i>	NORMAN ATKINSON
<i>Treasurer</i>	JACK VALENTI

Second Semester

<i>President</i>	GENE CUNY
<i>Vice-President</i>	RAY CAMPBELL
<i>Second Vice-President</i>	NORMAN ATKINSON
<i>Secretary</i>	ED DAVIS
<i>Treasurer</i>	FELIX STANDLEY

Faculty Sponsor, LEON HALDEN

The Pre-Law Society, formed in the second semester of 1940 as an organization for those students who plan to study for the legal profession, progressed further during 1941 under the guidance of Mr. Leon G. Halden, the faculty sponsor of the club.

Judge Norman Atkinson addressed the group in November. The first formal initiation was held in February at the home of Halbert Berry. An informal dance in the Cullen Auditorium was held shortly after the installation of the new officers.

The contribution of the society to the Frontier Fiesta was the Judge Roy Bean Court.

PRE-LAW SOCIETY



Valenti
Schill
Lopez
Charpiot
Davis
Stokely
Halden

Atkinson
Sparr
Campbell
Lee
Cuny
Stanley
Menefee

Botts
Bleike
Ehlers
Zeto
Taub
Cavanaugh
Goyen
Saunders

PRE-MEDICAL SOCIETY



ALLEN

HANOVICH

OLIVER

LEKEBUSCH

TURNER



OFFICERS

<i>President</i>	JOE ALLEN
<i>Vice-President</i>	TOBY HANOVICH
<i>Recording Secretary</i>	THELMA JOYCE OLIVER
<i>Corresponding Secretary</i>	ILSE LEKEBUSCH
<i>Treasurer</i>	MARY TURNER
<i>Faculty Sponsor</i>	LYLE T. HOOKER

PRE-MEDICAL SOCIETY



The Pre-Medical Society was founded two years ago with the advice and assistance of its faculty sponsor, Lyle T. Hooker. Its membership is made up of those students whose college work will later lead them into some branch of the medical field.

Information concerning entrance to medical schools and hospital training is secured for the benefit of all who are interested, and during the year many Houston professional men spoke before the club.

A shadow operation and show was the feature of the society at the Frontier Fiesta.

THE BAPTIST STUDENT UNION



OFFICERS

<i>President</i>	NELL JEAN STEWART
<i>Vice-President</i>	BILL CRUMP
<i>Vice-President</i>	ANITA MEREDITH
<i>Secretary</i>	WARREN GRAYBILL
<i>Treasurer</i>	ELWYN PARKS
<i>Sponsor</i>	P. C. MASTEN

The Baptist Student Union opened the year with a party honoring new students in September. At Thanksgiving, the club held a breakfast, and at Christmas it sponsored a toy hospital for a Mexican Mission. Later in the year two Student Retreats were conducted at Casa Del Mar. The B. S. U. this year sent a representative to the Southwide Student Retreat at Ridgecrest, N. C. A service at the Star of Hope Mission was held each month and devotional meetings five times weekly were held on the campus. As usual, the B. S. U. published during the year their bi-monthly newspaper.



AMERICAN CHEMICAL SOCIETY
STUDENT AFFILIATE

OFFICERS

President.....M. A. WESTBROOK
Vice-President.....J. S. WINTERHALTER
Secretary-Treasurer.....T. M. WADDELL

Formed during the fall semester of 1940, the student affiliate received its charter from the national organization at a dinner held at the Plaza Hotel in January. Mr. Lloyd Evans, president of the American Chemical Society presented the recognition.

During the spring semester, a joint session was held with the Rice Institute chapter.

Several lectures and demonstrations were given by outside chemists to members of the society as an addition to the regular course of study.



CHORAL CLUB

OFFICERS

<i>President</i>	PAT KIETZMAN
<i>Vice-President</i>	GENEVA SANFORD
<i>Secretary</i>	SUZANNE LARIMER
<i>Treasurer</i>	MARIAN PELLERIN
<i>Publicity Chairman</i>	BETTY JANE CHILDRESS
<i>Librarian</i>	JACKIE LESH
<i>Faculty Sponsor</i>	BRUCE KING

The Choral Club, with the Boys Glee Club, had its initial performance of the year December 16 at the university.

The club on February 16 appeared as guests of the Central Methodist Church of Galveston, and gave a vice-versa dance in March in the Cullen Auditorium.

Closing the year, the club in May presented an operetta, "A Waltz Dream," under the direction of Mr. King and L. Standlee Mitchell.



GLEE CLUB



OFFICERS

<i>President</i>	LARRY WILKINSON
<i>Vice-President</i>	ARTHUR MILLS
<i>Secretary-Treasurer</i>	JACKSON SMITH
<i>Business Manager</i>	NEVILLE POWELL

Formerly organized with the girls as the general Choral Club, during this year the boys formed their own organization under the name Glee Club of the University of Houston.

The initial performance was held in conjunction with the girls Choral Club on December 16.

The club was active at various other times in the social life of the university, and participated in the presentation of the operetta, "A Waltz Dream," in May.

UNIVERSITY OF HOUSTON SOCIETY OF ENGINEERS



OFFICERS

President JOE HOMER

	Day	Night
<i>Vice-President</i>	BILL KIRK	JERRY LEINWEBER
<i>Secretary</i>	VLADIMIRE BILY	EDDIE SMITH
<i>Treasurer</i>	LOUIS SHEPHERD	NORMAN WOODRUFF
<i>Speaker</i>	RAYMOND STOLZ	BRADFORD ALLEN
<i>Chief Engineer</i>	CARROLL SWARTZ	
<i>Sergeant-at-Arms</i>	EDWIN CHERNOSKY	

BOARD OF DIRECTORS

Vladimire Bily, *Chairman*

Arthur Poxon

Bob Tennant

Joe Homer

UNIVERSITY OF HOUSTON SOCIETY OF ENGINEERS

The University of Houston Society of Engineers is one of the oldest organizations on the campus and it provides the engineering students a better opportunity to know each other.

Many field trips were held during the year, and several parties were enjoyed by the society during the term. Following its usual custom, the Society sponsored regular visits to industrial plants in the Houston area during the year, affording the members of the society opportunities for practical study of local industries in actual operation.

The high spot of the second semester was the annual Engineers Dance, which this year was in the form of an Air Raid Dance, with the guests coming as they might imagine being caught when the air raid siren went on. The Society closed the year by contributing several booths to the Frontier Fiesta.



LES MOUSQUETAIRES



OFFICERS

<i>President</i>	NORMA LYNN WOOD
<i>Vice-President</i>	EILEEN PHALEN
<i>Secretary</i>	BETTY LEE HEINRICH
<i>Treasurer</i>	DIXIE JUNE BRECUNIER
<i>Publicity Chairman</i>	SUZANNE LARIMER
<i>Student Assembly Representatives</i>	{ MARY LEE PYLE MARY FRANCES JONES
<i>Faculty Sponsors</i>	{ WILLIAM SHAMBLIN JULES A. VERN

The French Club of the University of Houston, Les Mousquetaires, was founded in 1934 under the name Comme-Ci, Comme-Ca for the purpose of conversing in French at informal gatherings and entertainments. Club members were active in French Little Theatre productions.

In 1938 the club adopted the present name. With money earned from its activities the club has contributed to the Building Fund, and has purchased over a hundred books for the university library.

This year was begun with a banquet for new members. During the Christmas holidays a party was given. During the Frontier Fiesta, the club constructed a booth as a replica of a typical French side-walk cafe.

PSYCHOLOGY CLUB

OFFICERS

<i>President</i>	BETTY YATES
<i>Vice-President</i>	HAROLD MOBLEY
<i>Secretary</i>	DOROTHY HOWARD
<i>Treasurer</i>	ROBERT DUFF
<i>Faculty Sponsor</i>	DR. ROY A. CROUCH

The Psychology Club was organized in March of this year for the purpose of discussing problems in the field of psychology.

Although the newest of the extra-curricular organizations on the campus, the club has made up in enthusiasm what it lacks in tradition, and looks forward to a new year.



COLLEGIATE DRAMATIC SOCIETY



OFFICERS

<i>President</i>	BETTIE HAYS
<i>Secretary</i>	ROSEMARY PELLERIN
<i>Treasurer</i>	RAY CAMPBELL

The Society began its year by entertaining the members of Red Masque with an open house. The first play by the group was "The Ghost Train," presented in December, with a banquet at the Golden Girl after the show.

In March, a weiner roast for members and dates was held. The year closed with the Society presenting three one-act plays.



RED MASQUE PLAYERS

PresidentCHARLES SAUNDERS
Vice-PresidentROSEMARY PELLERIN
SecretaryLELA BLOUNT
Business ManagerJOE POTTER
Faculty SponsorL. STANDLEE MITCHELL

The first function of the group was the open house held for the new members — "Ah, Wilderness" was the dramatic success of the Players in October followed by a banquet at the Original Mexican Restaurant — the second dramatic production of the year was "Is Life Worth Living" with the celebration at Christy's afterwards.

Dr. Reginald Platt and Cy Howard of the Houston Little Theatre appeared as guest speakers during the year. A melodrama was presented during the Frontier Fiesta, and the annual bay party concluded the year.



SPANISH CLUB



OFFICERS

<i>President</i>	BETTY HEINRICH
<i>Vice-President</i>	GLORIA DEL COSTILLO
<i>Secretary</i>	MARGARET LOUISE LOOP
<i>Corresponding Secretary</i>	HELEN BRITTON
<i>Reporters</i>	NENA J. RAMSEY, NORMA WEBB
<i>Faculty Sponsor</i>	FLOY P. SOULE

The Spanish Club of the university, El Foro Espanol, following its usual custom, met at Christmas time for a party at the home of Mr. and Mrs. Edgar Soule. Pan-American Day was celebrated on April 13 in the garden of the Soule home. The Consular Corps of the Pan-American Republics, including Mr. Urrea, Vice-Consul of Mexico, and Mr. Burbano, Consul of Ecuador, who spoke briefly, were guests of honor.

The club during the year has endeavored to steadily maintain its two-fold purpose — to foster interest in the establishment on the campus of a Pan-American Building, and to establish exchange scholarships between the University of Houston and similar institutions in Latin-America.

SPEAKERS FORUM

OFFICERS

First Semester

President.....PETER CHUOKE
Vice-President.....SHERWOOD CRANE
Secretary.....LA MURIEL MONTGOMERY
Treasurer.....ALICE DAVID

Second Semester

President.....SHERWOOD CRANE
Vice-President.....ALICE DAVID
Secretary.....SUE MORGAN
Treasurer.....FELIX STANDLEY
Faculty Sponsor.....HARVEY W. HARRIS

The Speakers Forum is organized from the students of the Speech Department of the university and has as its object the improvement of the speech of its members.

It was the practice of the club during the year to hold a program night once every two weeks during which the members of the club contributed their own entertainment such as singing, dancing, and dramatics.

Topics of interest to the student body were frequently discussed in informal open forums.



GEOLOGICAL SOCIETY

OFFICERS

First Semester

<i>President</i>	DAVID BRATTEN
<i>Vice-President</i>	JOHN KELLY
<i>Secretary</i>	O. F. LANGFORD
<i>Treasurer</i>	B. E. MAXWELL

Second Semester

<i>President</i>	JOHN KELLY
<i>Vice-President</i>	C. J. MURDOCH
<i>Secretary</i>	JOHN R. WILSON
<i>Treasurer</i>	W. P. CRADDOCK
<i>Student Assembly Representatives</i>	DAVID BRATTEN, RAY GRODHAUS
<i>Faculty Sponsors</i>	FRED SMITH, R. D. WOODS, DR. K. M. HUSSEY

The Geological Society with this term is closing out its second year on the campus. Carrying out its purpose of furthering the knowledge of its members in the field of geology, the club has during the year sponsored several talks by authorities on the subject. Field trips are a regular feature of the school year, in addition to those conducted by the Geological department of the university.





Dr. Baldwin entertains for the B.A.'s. Shebay presides at the punch bowl with Stewart, Tibbits, Neibel, Pellerin, Hollis, and Yates awaiting turn. Collegian line-up, mostly officers in the background, plain members in the foreground — Mitchell, impeccably dressed for relaxation, always graciously answers to the courteous call, "Hey, 'Mitch'" — the intricacies of the modern air-cooled engine with Hutchison doing the honors — give 'em the teeth gals, Buckaroos galore — Taub stands off gunman Sparr and whip-man Alston — "oooooooooh, Weed, not me," says Butler, knowing full well prexy's not kidding this late — Perkins warbles — again B.A.'s, Morgan, Walzer, Dr. and Mrs. Baldwin, Shebay, and O'Brien.

DIVERSIONS

ICE HOCKEY



Back row — R. J. Fenzl, Jimmy Moroney, Bobby Dwyer, Lockhart Nolen, Chester St. Clair
Front row — Leonard Cullen, Cyril Bergeron, Danny Mulvey, Frank Orsini, Robert Schexnayder

Captain.....R. J. FENZL

Coach.....ARCHIE W. FRENCH

The Hockey Team had its most successful season this year, was beaten only by Rice Institute. Both teams were tied for the lead at the close of the season. A two-game run-off was played, winner to be the team scoring most goals during the two games. University won the first, Rice the second game, and Rice scoring most goals.

Much credit goes to Coach French for the fine sportsmanship and excellent play of the team.



Action on the ice



JAMES RÖDERICK MORGAN
Captain

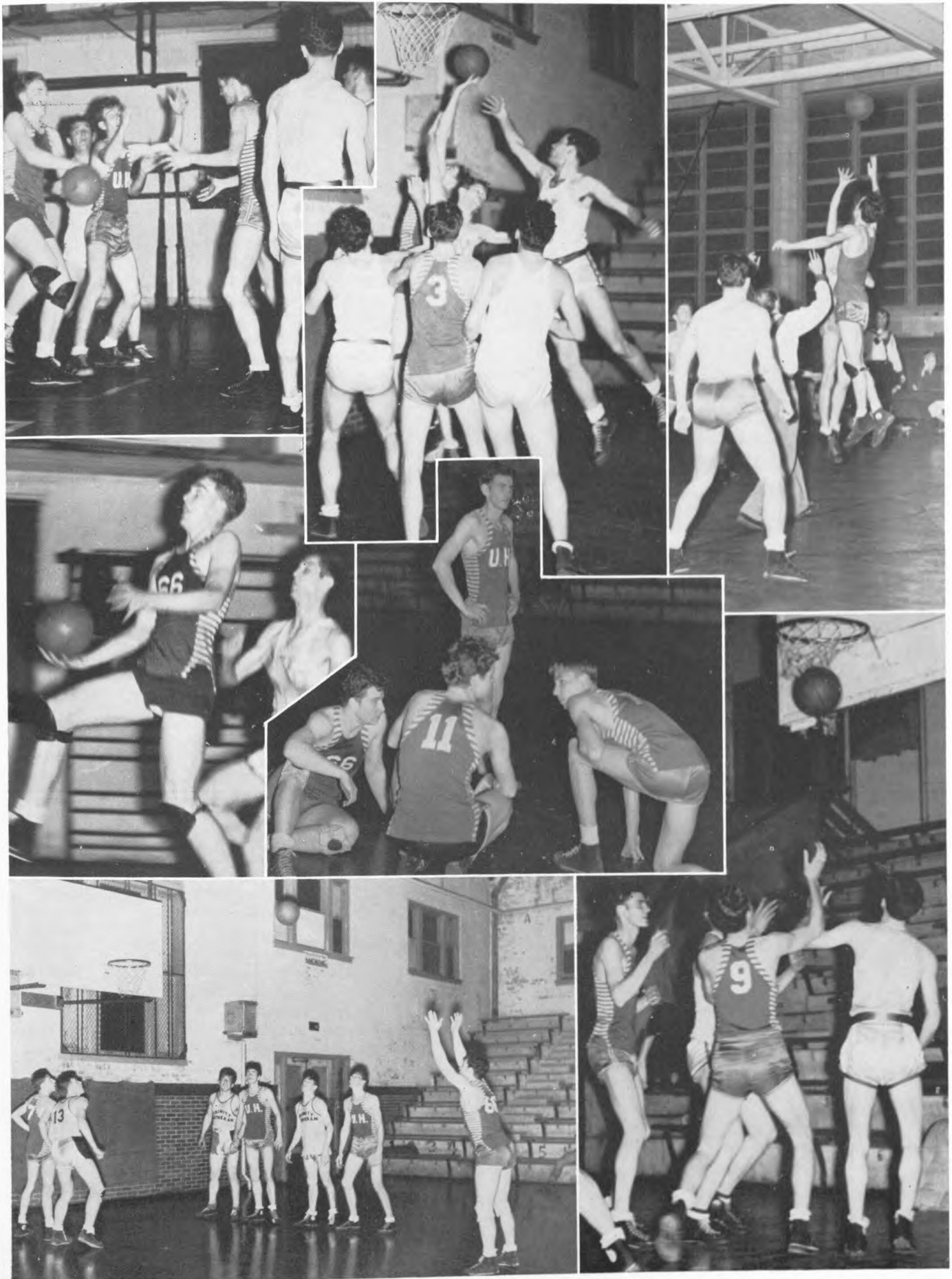
E. A. SNAPP
Coach

BASKETBALL

The basketball team had a splendid season under the guidance of Coach E. A. Snapp. Playing in the Recreation Department Tournament they were beaten only by Carr's-Sweeney and finished in second place behind the champs.



Paul Saphos, Burt Bader, Morgan, Henry Hope, Herman Earlywine, Dudley Vance, Snapp,
Norman Woodruff, Glenn Cornwell, Buddy Toomey, Bill Sparr.



Action on the court

SOFTBALL

Organized late in the year, the softball team played in one of the night Recreation Dept. leagues at Mason Park. Outfitted in brand-new uniforms in the school colors, and playing several nights a week, the team played some twelve games, winning all except two.

Although the newest of the university teams, there is considerable good material on the squad, and it is expected that they will have a very successful season next year when they play on their own lighted field on the university campus.

The manager of the team was Herman Earlywine, the coach, Ed Snapp.



Woodruff, Vogelsang, Earlywine, Grammier, Hogwood, Snapp
Vance, Smith, Kelley, Zagst



Action before the footlights.

**SENIOR HIGH SCHOOL
RECEPTION**



High School Seniors, honor guests of the evening — Rosemary Nevue enthroned with her escort — Student Association President Peterson, official university escort for the beauties, calmly guides the most beautiful of the presentees — that's a good bow, if a trifle stiff — the cream of the graduating seniors of the city, judges headache — chivalry is nice when done well, but it's hard when you're not in practice, isn't it Bud?



Seniors Morgan and Gay pay homage to their monarchs — Their Majesties, Queen Alice and King Henry — Juniors Potter and Brigance — more seniors, Greer and O'Brien, hoop-skirt and all — university nobility in line — Wood and Saunders, at home before the footlights.



The Royal Court of the University of Houston 1941 May Fete — anonymous beauty — the Most Beautiful Girl of the high schools of the year — photographers field day — mostly the back of Mitchell's neck — parade of the high school representatives to the Fete.

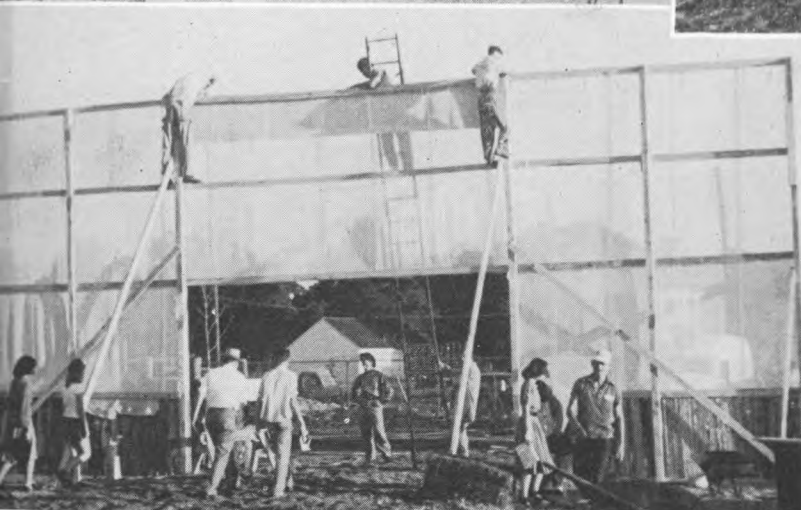


Royalty and nobility before the coronation — David maintains poise and calm — Gay and Morgan high above the flurry of the lower classes, academic only, of course — Leinweber and Rankin enjoy their moment of fame — Rankin, again, and Chapman await the big moment — Princess Pat, enjoying herself in hoop-skirts, while Wadley and Carlon in foreground wait patiently for announcer Yerxa and friend to finish their conversation.

FRONTIER FIESTA



Autrey, Rankin, Keller, Harrington, Tremaine, and Merritt gang up on "fuehrer" (no offense please, Joe) Koppel for the start of the beard-growing contest — Koppel and Schill sell the mayor the first ticket, and when anyone is naturally shorter than Joe, he's good — some of the "hoss-riders" plan their ticket campaign — after the battle, mother, what greater courage than to let a girl shave you — preview of the winner, Cardiff, during one of the weekly measurings — "the cup" by Oshman's, went to Buckaroos for plenty tickets sold — some of the boys pile up the boxes, fence-posts, gates, etc. (note to the Dean — don't believe it) — the result, some blaze, huh.



Looking from inside the "Big-top" — "Doc" Kemmerer "fixing" the dance floor, mouth full of nails, with Leinweber assisting — Ware holding Daly up after an "accident" — everybody puts their shovel to the sawdust, without which there would have been only muddy water mostly — see what we mean, this almost was the final as well as the opening scene — Hutchinson, dressed for labor, looks for more rain, while student helpers play — Main entrance gets trimmings just before opening — Carr and Flanagan get an aerial view of the grounds — amateur carpenters and painters add a few finishing touches to the tool house.



Art Department contribution to the Fiesta — Grissom interpreting some of our modern art — “Coz” Daly beats out a fast one — Wilson and Tenney on a bicycle built for two — Manry drumming orders for her All Girl Band — McHenry, “Ace showman,” vocalizes a number to Merritt — we trip the light fantastic with Mitchell, Adams, and Lacy — Lohse gives that special attention to Day — here we have bathing on the campus twenty-five years ago — Anderson, Jones, Dillard, and company do an encore for Night Club Revue.



Sturgis draws 'em in while Beaman and Moffatt fan away the mosquitoes — Olivia "Chez Paree" Bradford picks 'em up and puts 'em down for Casino Revue — BINGO with Stewart watching O'Brien and Sterne put corn on the card — Sprawls barks for one of the shows, flanked by two beautiful beamers — the Melodrammer, the biggest on earth, portrays life in a Bowery cafe in the nineties with the "Ta-ra-ra-boom-te-a" girls slinging a mean knee while Perkins, Wilson, Alston, and Sparr affect nonchalance — Judge Roy "Murrelle" Bean dispenses justice West of the Pecos — swing high cowboy, the bell rings hard — Lancaster's Beauty Parade of the Century showing the Dean's handiwork — Jones opens wide the bridgework and busts tonsil for the Night Club Revue.

ADVERTISING



Just the beginning, or "hell week" to you — what kind of affair was this, no pants? — poor lost fishess, or is it slimess? — the Dean's chillin' — you're next, pay here, please — Owens in a restful mood on the new flag-pole — blindman's buff with Leinweber inquisitioning in the background — Stewart grins while Tremaine debuts with friend — praise Allah and sing "Fight On" — Del Costillo gets part of the Saturday night chore gratis — freshmen brawl in the fall — the party is the other way, men — Mast gets a fine paint job from Wilkenson — Mast and new paint job shows 'em how.



MEMBER FEDERAL DEPOSIT INSURANCE CORPORATION

"What sculpture is to a block of marble,
Education is to the human soul."—ADDISON

TO THE CLASS OF '41

Humble Oil and Refining Company,
a Texas institution, congratulates
you upon the successful completion
of your college career. May the joys
of college days continue with the joy
of useful work well done in your
chosen profession.



Compliments of

**HOUSTON
ELECTRIC
COMPANY**



Conway and Heesche lead the Conga chain — Soph "Deb" Schwecke and Taub cheek-to-cheek — Leinweber retreats forward from Rankin on Sadie Hawkins Day — it's all right, Genevieve — bored, Max, with Saunders? — Roberti has that fascination for Jeppesen and Shelton — beam Sims — hockey star Mulvey in pigtails, and singing — again Leinweber with Goyen and "slime" while the Dean makes with the speech — Hager slumbers peacefully on, disturbing no one — mannikins Schwecke and Keith, but lovely — coming, going, and just resting on Science steps.

DRINK

Coca-Cola
TRADE MARK
REG. U.S. PAT. OFF.

IN BOTTLES

Sakowitz Bros.

ON MAIN AT RUSK

"One of America's Really Fine Stores." Specializing in Men's, Women's and Children's Apparel and Accessories. Occupying six floors of the 35-story Gulf Building. HOUSTON



A Name

and what it stands for!

That same impulse that leads one to look for the Karat mark on gold . . . or the Sterling mark on silver . . . leads one to look for the label on an article of merchandise. If the label says "Sakowitz Bros." . . . the article is immediately accepted as genuine . . . and ultimate satisfaction is a foregone conclusion!

Back of every piece of merchandise in this great store there is a stern guardian of its quality! Consistently careful . . . extremely cautious . . . ever vigilant that nothing shall enter that does not reflect credit on the name of Sakowitz.

RECOMMENDED BY THE PEOPLE WHO KNOW

Personality Portraits
CHADWICK
Studio
LEO DUBINSKI BOB BANZER
716 National Standard Building
Phone C.5663 ▼ Houston, Texas

Photographers for the Houstonian class sections

KRUPP & TUFFLY *Inc.*

9 0 1 M A I N A T W A L K E R

SHOE CENTER OF SOUTH TEXAS

Since 1882

Corrigan

JEWELERS, INC.

903 Main Street

FAMOUS BRANDS FOR MEN

Hart Schaffner & Marx Clothes



Arrow Shirts



Stetson Hats

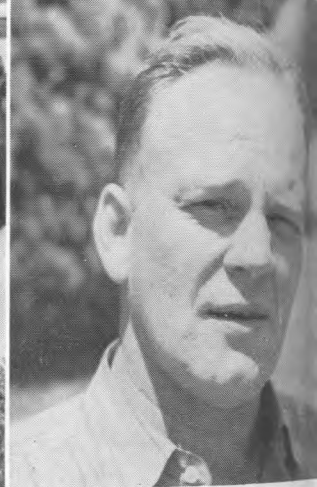
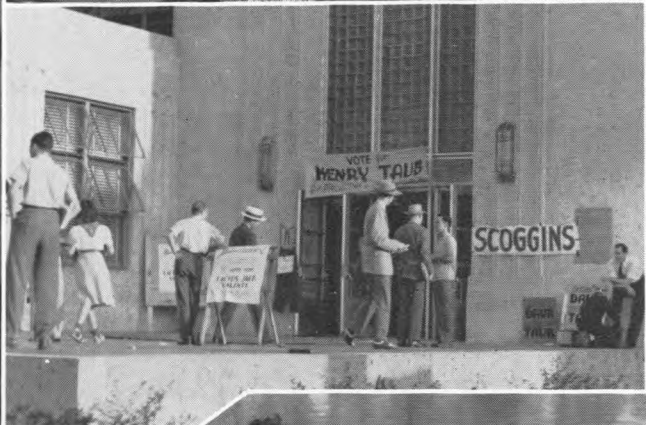


Florsheim Shoes



LEOPOLD & PRICE

805 Main • Houston



Scared, Frank? Campbell, Shill, Morgan, David, and Cuny seem happy — hope there's no one mad here — Walzer and the Pellerins waiting for someone — Congressman Thomas answers a hot one — Remember? everyone including Campbell hunting the owner of the pants by the entrance way — a threesome with Woodburn looking for the fourth — Jerry and Hal in close-up with Ed Davis and friend in the background — Crawford and Emmert gang up on the poor horse — OK, you can play now — "The Angel" Miller.

Best Wishes to
UNIVERSITY OF HOUSTON
from

TEXAS ELECTRIC
STEEL CASTING COMPANY

Compliments
of a
Friend

THE HOUSE OF QUALITY
for Houston Homes



Greetings and Best Wishes
to the student body
UNIVERSITY OF HOUSTON

WILSON
STATIONERY & PRINTING CO.

Main at Prairie — P-8221
HOUSTON



UNION BOTTLING COMPANY
Capitol-9248



Beauties galore — Norma Jean Schwecke — Estelle Clayton — Rose Marie Tuffly — Daurice Smith — Frances Tremaine — Line-up of glamour after having been rushed madly off the stage — Bonnie Boysen — Jane Blair — Mary Jane Autry — Lou Ann Flanagan — Beverly Baldrige.

5708 Alameda Road

Phone Lehigh 9303

Palace
RIDING STABLES

Where the Buckaroos Ride

JOHN SKAGGS, Owner

HOUSTON, TEXAS

PAT H. FOLEY & CO.

FUNERAL DIRECTORS

Dignified, Thoughtful, Efficient Service

★

HADLEY 2177

4010 FANNIN

Ex-student of the University of Houston

Foley Bros.

- THE LARGEST STORE
- IN THE LARGEST CITY
- IN THE LARGEST STATE

Houston Owned

Houston Minded

Compliments of

A. B. C.
and
HENKE & PILLOT
FOOD STORES

Fifteen Super Markets

Serving Houston

ESTABLISHED  IN 1887
LEVY'S
LEVY BROS. DRY GOODS CO.

Battelstein's

Houston's Smart Store

For Men • Women • and Boys



Neville "McNamee" Powell, guardian of the university air-waves, fastens his gaze on the mike — beauties of the Class of '43 — the winners, Doc Hiller and Taub, most handsome — Koppel before the rains came, lines up stuff for the much postponed Fiesta — Houston does her bit for the Buckaroo dance — some liquid refreshment after the bonfire — the sunshine girls give out with "You Are My Sunshine" for the Juniors, with Gerlach from Sam Houston State in the background — "What am I offered?" Cuny and Campbell finally had to give the cake away — Brigance and his St. Louie gal at the Houstonian Presentation Ball — Barron and Miles, and Barron's usual orchid — Prexy Peterson and his flame from Minnesota — why must these boys go so far off for these Yankee gals? — Peterson again, crowns Morgan Prom queen.



BOOKS

REFRESHMENTS

University Book Store

SUPPLIES

JEWELRY

the COUGAR

Newspaper



Your favorite department store

SEARS, ROEBUCK AND CO

LOW-COST HOME LOANS

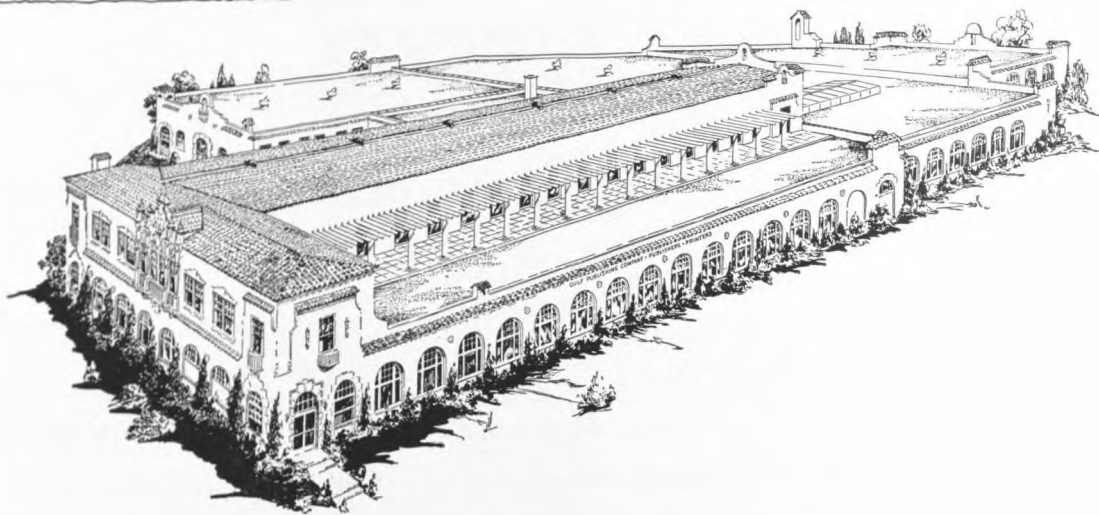
for building, repairing
and refinancing

DEAL WITH HOME FOLKS

PROFITABLE INVESTMENTS

Safety insured up
to \$5,000

Houston First Federal
SAVINGS AND LOAN ASSOCIATION
1114 CAPITOL • FAIRFAX 3341



fine printers ★

CATALOGUES, BROADSIDES, HOUSE ORGANS, MAGAZINES, BOOKS,
FOLDERS, LEGAL BRIEFS, BROCHURES, OFFICE STATIONERY,
SCHOOL ANNUALS, PROGRAMS, OIL COMPANY STOCK FORMS

GULF PUBLISHING COMPANY

3301 Buffalo Drive HOUSTON, TEXAS Telephone Hadley 3141



ENGRAVINGS BY ART ENGRAVING COMPANY, HOUSTON, TEXAS

AUTOGRAPHS

STUDENTS AND FACULTY — 1941

ABLE, GENEVIEVE
 ABRAMS, SAMMY S.
 ABREGO, BETTY
 ACKERMAN, VIRGIL LYNTON
 ADAIR, JOE
 ADAMS, BETTY JANE
 ADAMS, JAMES FRANK
 ADAMS, JUD LEE
 ADAMS, PATSY JANE
 ADAMS, ROBERT HENRY
 ADAMS, WALTER QUITMAN
 ADICKES, ROBERT FREDERIC
 AGE, OSCAR LEE
 AIKEN, WILLIAM
 ALBIN, G. O.
 ALDERS, LOIS LILLIAN
 ALLEMAND, JULIUS MITCHELL
 ALLEN, BRADFORD M.
 ALLEN, HAL B.
 ALLEN, JOHNNIE EDWARD
 ALLEN, JOSEPH WALDEMAR
 ALLEN, WALTER EDWARD
 ALLIN, PHILIP R.
 ALLWRIGHT, AMY G.
 ALSTON, M. K., JR.
 ALSUP, JOHN CREG
 ALSUP, RODNEY JACKSON
 AMES, EDELWEISS JENKENS
 AMES, RICHARD HENRY
 AMES, WILLIAM HENRY
 ANCINEC, ROSE MARIE
 ANDERSON, LUTHER THOMAS
 ANDERSON, MARVIN HOBERT
 ANDERSON, MARY ELIZABETH
 ANDERSON, RUTH LOUISE
 ANDERSON, SHIRLEY JANE
 ANDREWS, CLARICE DELL
 ANDREWS, DOFFIE N.
 ANDREWS, IRVIN TALMAGE, JR.
 ANDREWS, JOE ELMO
 ANDREWS, LILLIAN C.
 ANGELOS, NICK JAMES
 ANTONE, RAY
 ANTHONY, JAMES
 APPERSON, NORMAN TALMAGE
 ARANT, JOHN SPINKS, JR.
 ARMSTRONG, BILLY J.
 ARMSTRONG, MARY NUGENT
 ARMSTRONG, MAUD DAVIES
 ARNOLD, AUGUSTUS WILLIAM, JR.
 ARNOLD, BILLIE G.
 ARNOLD, ROY FRANKLIN
 ARON, ALFRED IRVIN
 ARTO, FRED CLEVELAND
 ARTUSY, MRS. JANE COX
 ARTUSY, RAYMOND LONGINO
 ASHER, COLMAN ROTH
 ATKINSON, LOUISE
 ATKINSON, NORMAN
 ATLAS, LILLIAN
 AUSTIN, OREN LYLE
 AUTREY, MARY JANE
 AVERY, FRANK LeROY
 AVERY, MRS. R. E.
 AVRIETT, GILES CROXTON

BABCOCK, GENEVIEVE
 BACHMAN, DICK C.
 BADER, BERTRAN THOMAS
 BADGER, FARRELL FRANK, JR.
 BADGER, HARRY SPRAGUE
 BAETHER, MARION ISABEL
 BAGGETT, ANNA JACQUELYN
 BAILEY, ETHEL WEBB
 BAILEY, PERCY WILLIAM
 BAILEY, SYDNEY SMITH
 BAILLERES, JOHN DAGOBERTO
 BAILLIO, DOROTHY LORRAINE
 BAILY, DAVID WALLACE
 BAIN, WINSLOW VERNON
 BAINES, CONNIE
 BAKER, JACK

BAKER, JEFFERSON T.
 BAKER, MARION KATHERINE
 BAKER, ROBERT EDMOND
 BAKER, JEFFERSON J.
 BALDRIDGE, BEVERLY
 BALDRY, GEORGE EDWARD, JR.
 BALEZ, ERNEST JOHN
 BALL, EDNA FAE
 BALL, SHERWIN JACKSON
 BALLARD, WESLEY EMERSON
 BALLENTINE, JOHN ALTON
 BALLEW, JACK CONLEY
 BANTA, ETHEL LOU BECKY
 BANTA, FRED C.
 BARABASH, WALTER PAUL
 BARHAM, HELEN JANE
 BARNARD, CORRIDEN DONALD
 BARNARD, HAROLD
 BARNES, GERALDINE
 BARNES, MARION LEATRICE
 BARNHILL, GENE FLEMEN
 BARRINGTON, ETHELYN E.
 BARROW, M. B.
 BARROW, RICHARD GILBERT
 BARROW, RICHARD WINSTON
 BATAY, ALBERT JAMES
 BARTH, JOHN HENRY
 BASTON, EMMA LEE
 BATCHELOR, WILLIAM, JR.
 BATEMAN, HERBERT EDMOND
 BATES, MARION DAWN
 BATTERSON, VERNON CLARENCE
 BAXTER, STONEWALL JACKSON, JR.
 BAXTER, PETER SOLOMON
 BAY, PEGGY GENE
 BAYLES, ALICE VIRGINIA
 BAYLES, MARY ALTHEA
 BEAMAN, DIXIE MAE
 BEAMAN, RAY
 BEANE, ROSE ERMINE
 BECKER, CARL
 BEDNAR, CHARLES VINCENT
 BEINHORN, CHARLES ARTHUR
 BELL, BORIS ISRAEL
 BELLES, GERALDINE L.
 BELMONTE, HORACIO LOYOLA
 BERGER, JOE H.
 BERING, SAMUEL EUGENE, JR.
 BERRY, FRANK LEE
 BERRY, JOEL HALBERT, JR.
 BIDDLE, HOMER OLAND
 BIENVENU, BERT
 BILNOSKI, ROSE LEE
 BILY, VLADIMIR GEORGE
 BIRATH, MRS. ELNA THUR
 BIRDWELL, JERRY HERBERT, JR.
 BIRKMAN, ROGER W.
 BIVAN, DAVID FORD
 BLACK, MRS. ESTHER WEIGELT
 BLACK, JAMES DAVID
 BLACK, JOHN BENNETT, JR.
 BLAIKIE, ROGER EWART
 BLAIR, JANE BURGESS
 BLAIR, MARJORIE INETA
 BLAND, JOSEPH DOUGLAS
 BLANKS, WILLIAM J.
 BLASINGAME, HOWARD R.
 BLEAKNEY, EDWIN A.
 BLEAKNEY, ORA DELLE
 BLEIKE, ROGER, JR.
 BLIXT, MARCIA EMELIA
 BLOHM, GEORGE LEE
 BLOUNT, LELA ELIZABETH
 BLUE, WILLIAM THOMAS
 BOHAN, RUTH RYAN
 BOLLES, JOHN HOBBY
 BONNER, MARGARET
 BONDESEN, WILLIAM KRISTIAN
 BONGIO, ROBERT WARREN
 BOONE, JAMES ROBERT
 BOOZALIS, DEMETRI JOHN
 BOTTINO, LILLIAN CHRISTINE

BOTTLER, NAN WINNETTE
 BOTTS, HARRY B.
 BOTTS, ROBERT O.
 BOUDREAUX, EDWARD ALPHA
 BOUDREAUX, MARGARET
 BOUKNIGHT, SUE WILLA
 BOURNE, HARRY EDWARD
 BOURRET, MAURICE GLEASON
 BONTWELL, DOUGLAS WILLIAM
 BOWDOIN, RUBY L.
 BOWEN, MARYSUE FRANCES
 BOWLER, WILLIAM WALLACE
 BOWLING, JOHN
 BOY, GEORGE HERMAN
 BOYD, ANNA MAE
 BOYD, MINNIE RUTH
 BOYSEN, BETTY JANE
 BOYSEN, BONNIE
 BOYSEN, HAROLD EDWIN
 BOZEMAN, JOHN F.
 BRADBURN, MAUDE ELLEN
 BRADFORD, OLIVIA ANN
 BRADLEY, EWELL C.
 BRADLEY, RAYMOND LESLIE
 BRADLEY, WILLIAM ARTHUR
 BRANDES, EVA STRAUSS
 BRANTLEY, EDITH
 BRATTEN, JOHN LINDSLEY
 BRATTON, DAVID JONATHAN
 BRAUTIGAM, EVELYNE
 BRAUTIGAM, L.
 BREAUX, HELEN RANDOLPH
 BRECUINIER, DIXIE JUNE
 BREEDEN, SHELTON E.
 BREIT, CATHRYN AILEAN
 BRETT, DONALD HENRY
 BRIDGES, CAROLINE WALTON
 BRIEGER, ALBERT
 BRIGANCE, ALECE FRANCES
 BRIGANCE, CHARLES F.
 BRIGHTWELL, PROCTOR W.
 BRINKMAN, WILLIAM EMIL
 BRITAIN, RAYMOND R.
 BRITTON, DAVID ARTHUR
 BRITTON, HELEN
 BRITTON, THEODORE G.
 BOADWAY, KATHRYN FRANCES
 BROCK, HOYD ELWOOD
 BROKAW, EARLE W.
 BROOKS, P. R.
 BROOKSHIER, BETTY
 BROUSSARD, SALLY MARGARET
 BROWER, ALBERT
 BROWN, AUBREY
 BROWN, BENNY ANDREW
 BROWN, EDWARD VICTOR
 BROWN, ERNEST
 BROWN, GERALD ROY
 BROWN, JIM B.
 BROWN, MARIAN RUTH
 BROWN, ROBERT ADAIR
 BROWN, THOMASINE DAWN
 BRUECHER, CATHERINE IDA
 BRUECHER, MARCILLE
 BRUNSON, THOMAS CLYDE
 BRYAN, JANE ELLEN
 BRYANT, VIRGINIA FRANCIS
 BUCKLER, JOHN WESLEY
 BUCKNER, CHESTER LEE
 BUCKNER, GUY OLIVER, JR.
 BUCKNER, JUANITA FRANCES
 BUCKNER, R. C.
 BUEHNER, PAUL EDWARD
 BUMPERS, REX
 BUNJES, JOHN VERNON
 BUNDY, MARGARET MAE
 BUNTIN, BILLIE VIRGINIA
 BUNTING, NINA LOIS
 BURDICK, FRANCES GENEVIEVE
 BURKMAN, DOROTHY MARGARET
 BURNETT, JEFF
 BURNLEY, CARY LAMAR

BURNLEY, MARJORIE L.
BURRIS, EVAN W.
BUSBEY, GEORGE
BUSCHARDT, WILLIAM CHARLES, JR.
BUSH, ROBERT EWELL
BUSHEY, CHARLES W.
BUTLER, LOUISE
BUTLER, THERESA
BYRD, EDWIN LESLIE
BYROM, LUCILLE K. (MRS.)

CABINESS, VIRGINIA FRANCIS
CAGLE, CARROLL
CALAWAY, ROBERTA ALENE
CALHOON, RUBY LEE
CALHOUN, THONNIS WATSON
CALHOUN, WILLIAM CARL
CALLAHAN, GWENDOLYN ELSIE
CALVERT, H. LYSLE, JR.
CAMERON, JOHN N. C.
CAMMACK, JULIA MAE
CAMP, JOSEPH ALEXANDER
CAMPBELL, MRS. DOROTHY F.
CAMPBELL, DOROTHY MAY
CAMPBELL, FLOYMAE
CAMPBELL, MELVIN GRIGSBY
CAMPBELL, RAY, JR.
CANNATA, COLLEEN MARIE
CANNIFF, L. J.
CANNON, MILDRED LAMERLE
CANON, THOMAS HERALD
CAPDEVIELLE, WILLIAM LEO
CARAWAY, AMOS DAVID
CARAWAY, VESTAL HENRY
CARDER, JUNE
CARDIFF, BILL PRIESTER
CARLON, ELIZABETH FREW
CARLTON, ELIZABETH DAVID
CARNES, ELIZABETH VIVIAN
CARPENTER, CHARLES LOUIS
CARR, MILDRED MARGARET
CARRIGAN, JOHN FRANCIS
CARROLL, JOHN WALTER
CARROLL, WILLIAM ROBERT
CARSTARPHEN, CHAPEL PRICE
CARSTEN, FRANK C.
CARTER, ALFRED ALLEN
CARTER, ANNA JUNE
CARTER, CLAIRE FREDA
CARTER, LESTER DANIEL
CASEY, HAZEL H.
CASTELLANOS, GEORGE MELVIN
CASTLE, JACK HUSTON
CATHEY, ROY CECIL
CAUTHAN, WELDON DAVIS
CAWTHON, ELLEN LUCILLE
CHADWICK, JOHN L.
CHAMBLEE, ANNE CLARK
CHAPMAN, CARL WILBUR
CHAPMAN, ISABEL W.
CHAPMAN, THOMAS O.
CHAPMAN, WALLACE WEBSTER, JR.
CHARLTON, EMILY
CHARPIOT, MARION SYLVESTER
CHASTAIN, CARLIN AKIN
CHEATHAM, MARGIE OLETA
CHELF, ALPHA RUTH
CHENAULT, W. BLEWETT, JR.
CHERNOSKY, EDWIN J.
CHERNOSKY, JUANITA E.
CHIRP, ROMAN M.
CHILDERS, ALMER FLOYD, JR.
CHILDERS, MARGARET ROSE
CHILDERS, MARIAN RUTH
CHILDRESS, BETTY JANE
CHILDRESS, LETA LAVONNE
CHLADEK, JOHN
CHRISTY, VIRGINIA CARY
CIRE, DOROTHY REGINA
CLANCY, ROBERT T.
CLARK, FRANK CHRISTOPHEE
CLARK, FRANKLIN FORREST
CLARK, HARRY EUGENE
CLARK, KATHRYN ZELDA
CLARK, KENNETH KIRBY

CLARK, LEON WILSON
CLARK, MILFORD HARRISON
CLARK, RICHARD THOMAS
CLARK, VIRGINIA ADELINE
CLAY, HENRY JOSEPH
CLAYTON, ESTELLE FRANCES
CLEAVELAND, BRADFORD
CLEMENS, FRANK CARTER II
CLINE, MAE LOUISE
COAN, EDITH LILYAN
COBB, EMMA JEAN
COBB, MARY ADELYN
COBB, WYOMA
COCHRAN, BERNICE ELDREDGE
COCHRAN, JEFFERSON WILLIAM
COCHRAN, JOHN EARL
COCKRELL, EMBRY RANDOLPH, JR.
COCKRELL, MARION SEIGAR
CODDOU, GENE
COFFMAN, DOROTHY SUE
COKER, DENTON REUBEN
COLBY, FRANK OLIVER
COLBY, JOHN BYRON
COLE, JULIA ELIZABETH
COLEMAN, JARROD THURSTON
COLEMAN, JOHN ELMER
COLEMAN, MARIE MARJORIE
COLLIER, DELLA BELLE
COLLIS, MARTIN EDWARD, JR.
COLLINS, GEORGE THOMAS
COLLINS, HAROLD
COLLINS, MAJOR
COMBS, JACK
COMPERE, THOMAS HECHIGEE, JR.
CONAWAY, MARJORIE JANE
CONOON, ROBERT E.
CONNOR, JOSEPH J. W.
CONNERS, WILLIAM FRANK
CONROY, CHARLES WILLIAM
CONWAY, REV. J. DONALD
COOK, DOROTHY
COOPER, DAN THEODORE
COOPER, DOROTHY LEE
COOPER, JAMES
COPE, ELIZABETH JANE
COPPINGER, VICTOR
CORNWELL, GLEN WILLIAM
CORNWELL, OTTAWAY BETHARD
COLTON, DOROTHY MARIE
COUVILLION, URBAN BENNETTE
COVINGTON, ROY BYRON
COWAN, HENRY LEE
COWEY, ROBERT ALLEN
COX, C. BRANT
COX, GERALDINE LYDIA
CRADDOCK, WILLIAM PERCIVAL
CRAIG, ANN WEBB
CRANE, JAMES SHERWOOD
CRATE, ANDREW BUCK
CRAVEN, MARGUERITE MARIE
CRAVEN, RICHARD VIRGLE
CRAWFORD, DAVID STEWART
CRAWFORD, HULON L.
CRAWFORD, INEZ HENSLEY
CRAWFORD, RUTH
CRAYTON, JAMES JEFFERSON, JR.
CREAGER, WALTER PENN
CREIGHTON, MARY ANN
CREED, MARY LILLIAN
CRON, MAVIS ANDERSON
CRONIN, LUCILLE CECIL
CROUCH, JEAN RAE
CROUCH, PAUL CLIFFORD
CROWLEY, MRS. JOHN
CRUMP, WILLIAM LUCAS
CRUSE, RAY
CULVER, RALPH KENNETH
CUMMINGS, GLENN MALCOLM
CUMMINGS, JAMES ARAL
CUNNINGHAM, ADA EVA
CUNNINGHAM, CHARLES EDWARD, JR.
CUNNINGHAM, TED EDWARD
CUNY, EUGENE
CURRY, COURTNEY WEST
CUSHMAN, JAMES ALFRED, JR.

CUTTING, ROBERT JEROME

DAILEY, DOROTHY
DAILEY, FLETCHER WARREN, JR.
DAILEY, LEVENS ANDREW
DAILY, JEANNE MERLE
DALY, JACK
DANCY, HIBBERT HENRY
DANIEL, JACK
DARLING, JACK NICKERSON
DAUGHERTY, F. MORTON, JR.
DAVID, ALICE MARIE
DAVIDSON, HORTENSE ROSALE
DAVIDSON, LOUIS, JR.
DAVIS, BETTE EVELYN
DAVIS, DOROTHY LOUISE
DAVIS, ED CLIFTON
DAVIS, EDWARD FRANKLIN
DAVIS, FELIX ALBERT
DAVIS, FLORENCE KRENGEL (MRS.)
DAVIS, FRANCIS KENT
DAVIS, HAROLD WINSTON
DAVIS, JAMES NATHANIEL
DAVIS, MOSETTE
DAVIS, PATRICIA PAGE
DAVIS, VERA MAE
DAVIS, WILLIAM EMERSON
DAVIS, WILLIAM J.
DAVIS, WOODROW WILSON
DAVISON, MARGARET LEE
DAWDEN, RUTH DEBRAH
DAWSON, CARLTON LIGON
DAWSON, KITTY LOU
DAWSON, MARY JANE
DEACON, ESTELLE MAE
DEAN, ROBERT LOUIS
DeBELL, ROBERT HALL
DEBO, JOHN MICHAEL
DEBLANDON, ELIZABETH
DEE, MARY MARGARET
DeGREEFF, CASPER WILLIAM
DeHAAS, BILL F., JR.
DeHAY, GEORGE HERBERT
DEL CASTILLO, GLORIA
DEL CASTILLO, HELEN
DEMENT, L. HAZEL
DENNIS, MARY ELIZABETH
DERR, ERNEST FRANCIS
DETERING, LENORA
DEVOTTI, JACK RAYMOND
DeWALL, DORIS ESTELLE
DeYOUNG, CHARLES EDWARD
DICKERSON, LINWOOD WAVERLY
DICKERSON, WESTON ALBERT, JR.
DICKINSON, MARY ELIZABETH
DIENER, LURLINE
DILLAHUNTY, MARTHA ELVIN
DILLARD, MILDRED
DILLON, WILLIAM HOWARD
DILWORTH, TOM
DINAN, NATHALIE
DIX, GEORGE LEE
DOBLE, CLARE
DODSON, JONEL
DOHERTY, LAWRENCE
DONAHO, WILLIAM REUBEN
DORRIS, WILDA
DOUGHERTY, KENNETH WALTON
DOUGLAS, JOHN OWENS, JR.
DOW, THEODORE ALFRED
DOWNEN, RICHARD ALVIN
DOWNEY, GLADYS BERNICE
DOYEN, MRS. JEWEL BUTLER
DRAKE, MARY ANN
DREYER, ROBERT LEE
DUBINSKI, SYLVAN
DeBOSE, HANSFORD ARTHUR
DUES, ROSEMARY JULIA
DUFF, ROBERT L.
DUFFY, JACK GILBERT
DUKE, LILA AUBREY
DULLAHAN, JOHN EDWARD
DUMAS, HARRELL FISHER
DUNLOMP, MRS. ERNEST
DUNN, ABE

DUNN, HELEN LAVONNE
DUNN, JAMES FRANKLIN, JR.
DUNN, KATHERINE JANE
DUPREE, DORIS GLENN
DUSHAM, GWENDOLYN MAE
DURST, MAURINE WILSON
DURST, ROBERT STEVENSON
DUTY, JOHN MORRIS
DWYER, ROBERT H.
DYBALSKI, MILDRED MARIE
DYER, EVERETT DIXON

EADS, RICHARD GORDON
EARLYWINE, HERMAN
EARMAN, WILLIAM KENNETH
EARTHMAN, GRANVILLE
EARTHMAN, JAMES, JR.
EATON, GAIL A.
EDENS, ERNEST ARCHIE
EDWARDS, MAURICE
EDWARDS, RALPH MERLE, JR.
EGNER, PAUL O., JR.
EHLERS, LOUIS ALEXANDER, JR.
EHRHARDT, HENRY LEON
ELDRIDGE, GAIL PORTER
ELDRIDGE, LUCIA
ELLER, FRANK CHARLES
ELLINGTON, JUANITA MARIE
ELLINGTON, REX ROLAND
ELLIOT, EDNA MAE CLAIRE
ELLIS, CAROLYN JANE
ELLISON, HOWARD L.
ELLSWORTH, JOHN HAROLD
ELROD, EFFIE JEAN
EMBRY, DICIE HUNT
EMMERT, BEATRICE AGNES
ENGDOHL, DOROTHY LEE
ENGELKE, WILFRED ADOLPH
EPPARD, JOHN HENRY
EPPERSON, VIRGINIA ANNE
ERVIN, ROGER NEWTON, JR.
ERWIN, WILLIAM F.
ESCHENFELDER, PAUL FREDERICK
ESTILL, BETTIE
ETZEL, KATHLEEN ELIZABETH
EUBANKS, CHARLES TRUETT
EVANS, LEON MAURICE
EWING, TREPHER P.
EZELL, LABRON F., JR.

FARIAS, ALBERT GARCIA
FARIS, JOHN EDMOND
FARMER, LESLIE GEORGE
FAULKNER, ROBERT BURNS
FAY, CHARLES WILLIAM
FEDER, SOPHIE LEAH
FEREM, WILLIAM HENDERSON
FERGUSON, JAMES T.
FERGUSON, MARY FRANCES
FIERSTEIN, STANLEY CHARLES
FINK, LELAND CASPAR, JR.
FINKELSTEIN, RUTH
FINN, GEORGE RILEY
FISCHER, WALTER
FITE, AYERS ELIZABETH
FITZGERALD, EDWARD LEIGH, JR.
FITZGERALD, KATHLEEN COOK
FLAKE, EMMA FRANCES
FLANAGAN, LOU ANNE
FLANAGAN, MARYANNE
FLANAGAN, SAM HOUSTON
FLAVIN, ARTHUR WILLIAM
FLESHER, JOHN NEFF
FLOCKE, OTTO ROBERT
FLODINE, NORRIS ELGIN
FLOETER, DAVID LEE
FOERSTER, CECILE
FONTAINE, EDWARDS MARTIN
FOOTE, ALFRED AMOS
FORBES, S. DON
FORDTRAN, VELMA NANCY
FORDTRAN, WILLIAM H.
FORESTER, CHARLOTTE MABRY
FORNEY, CHARLES MATTHEW
FORTIER, ALBERT BENEDICT

FOSTER, GWENDOLYN LOUISE
FOSTER, JAMES K.
FOSTER, LELA CLAIRE
FOSTER, THOMAS BELL
FOURNIER, KENNEY CHARLES
FOWLER, JAMES BYRON
FOWLER, RICHARD EDWARD
FOX, ELOISE ROSLENE
FRANCIS, DENNIS LONZO
FRANCIS, CHARLES ALFRED
FRANK, JOHN BERNARD
FRANK, MARTIN H.
FANSEE, GABRIEL D. D.
FRANZ, ANDREW HERMAN
FRANZ, EVELYN IVY
FRASURE, ELIZABETH M.
FREEBORN, JACK
FREEDMAN, MILTON LESLIE
FREEMAN, CHAPPELLE
FREEMAN, HAZEL DEAN
FREEMAN, IRIS LAUNA
FREEMAN, ROBERT EDWARD
FRIEDBERG, JUNE ELAINE
FRIEDBERG, PHILIP ROBERT
FRIEDRICH, AUDREY MERCEDES
FRIEDRICH, CHARLES, JR.
FUERST, ROBERT
FULGHUM, HENRY LEROY
FULKERSON, CATHERINE
FULLER, ALICE LORENA
FULLICK, WILLIAM GARLAND
FURLEY, EDMUND

GAFFORD, HOUSTON
GAINES, AMY KATHLEEN
GALLAGHER, ELIZABETH ANN
GALNY, G. H.
GALNY, VELMA EILEEN
GAMBILL, PETER TRAVIS
GAMBLE, CLYDE RICHARD
GARDNER, MILTON
GARNER, PAT ELIZABETH
GARNER, WILLIAM H.
GARRISON, WILL YOUNG
GAUTNEY, MARGARET
GAY, MARY ELIZABETH
GAY, WILLIAM CLARK, JR.
GEIBEL, ROGER SCHWERTFEGER
GELDERT, MARGARET
GELFORD, JOSEPH SAMUEL
GELLER, REBA ANN
GENNUSA, LEONARD T.
GENTRY, ARVA ESTIS
GEORGE, ARCHER LLOYD
GEORGE, GEORGE, JR.
GEORGE, GERALD
GEROW, BETTY CORDELIA
GIBBS, LEWIS GEORGE
GIBSON, ISABEL EDITH
GIFFORD, ZORA JOY
GILLEN, JAMES WILLIAM
GILLER, EDWARD BONFOY
GILLIES, EDWARD F.
GILLIES, GEORGE KEITH
GILMORE, HARRY LEE
GIRALA, ANTHONY SEVERINO
GIRASH, JOE JOHN
GIRAUD, RICHARD THEODORE
GISLER, WILSON FRED
GIUFFRE, SAM WILLIAM
GLAROS, ELIZABETH
GLASER, CECELIA AGNES
GLASER, EDWARD JOSEPH
GLENN, ROBERT LOUIS
GOFF, RUSSELL FREDERIC
GOGGAN, GERTRUDE GERALDINE
GOHLMAN, HARRY DAVID
GOLDBACH, WALTER AUGUST
GOLDMAN, REUBEN J.
GOLDSTEIN, RALPH J.
GOOD, LEOLA JOY
GOODMAN, HAL A.
GOODRICH, MARY PRISCILLA
GOOT, IRWIN
GOSSETT, CHESTER EARL

GOULD, LAURA JANE
GOULD, WILLIAM EDWARD
GOYEN, CHARLES WILLIAM
GOYEN, JOHNNY W., JR.
GRACEY, CLEO CLAIR
GRAMMIER, FRED
GRAMPP, EDGAR
GRANT, HELEN F.
GRANT, JAMES R.
GRAVES, CHARLES WILSON
GRAY, MARJORIE JOAN
GRAYBILL, WARREN J.
GREEN, CHESTER JOSEPH
GREEN, CLIFFORD
GREEN, GLENN M.
GREEN, J. BERNARD
GREEN, LOUIS
GREEN, MARGARET
GREEN, QUENTIN LAFAYETTE
GREEN, ROBERT ALLEN
GREENE, MARY WILLIE
GREER, AVERY LENOIR
GREER, THORNTON C.
GRIESENBECK, MARY ANN
GRIFFIN, HENRY WILLIAM
GRIFFITH, HESTER JANE
GRIFFITH, WILLIAM FRANK, JR.
GRIFFITH, WILLIAM WALTER
GRISSOM, LAVERGNE EDELL
GRODHAUS, RAY FREDERICK
GROGAN, JACQUELINE
GROSCHKE, NORMAN RAY
GROSS, JOSEPH K.
GROVES, FRANK SIMPSON
GRUBBS, JACK THURMAN
GRUMBLES, MRS. ERON DIES
GRUBBS, ROY
GUEST, WAYNE WILLIAM
GUNDERSON, RUSSELL ARVIN
GUNN, ALFRED DAVID
GUNTER, THOMAS ROBERT
GUTHRIE, ROBERT STEWART
GUTHRIE, ROGER WILLIAMS
GUTIERREZ, MATILDE MARGARITA
GWIN, DOROTHY HARRIETT

HAARDT, GENE ERNST
HABERLIE, H. L.
HACKLEY, ALICE LORRAINE
HADEN, CHARLES MCINTYRE
HAGEN, ROBERT W.
HAILEY, MARY KATHRYN
HALE, DORENDA
HALEY, VINCENT EDWARD
HALL, EMERY CARL
HALL, PEARL FULLER
HALL, ROY ELVEN
HALLIBURTON, PAUL
HALPHEN, FRANCIS JOSEPH, JR.
HALSEY, HAROLD ADELBERT
HALVERTON, HELEN MARION
HAMBLIN, HEDY ALICE
HAMILTON, JOHN JEROME
HAMMERSMITH, HARRIS
HAMMOND, STERLING MIMS
HAND, FREDERIC NORRIS
HANNA, PEARLE EULALIE
HANOVICH, TOBY LEE
HANSEN, EVELYN GRAY
HARBERS, ALMA
HARBIN, DANIEL I.
HARBORDT, FRED AVES
HARDEY, IDA MARIE
HARDING, JAMES WHITNEY
HARDY, JOHN PAYNE, II
HARDY, SIDNEY BARON
HARDY, ZENIA VIVIAN
HARISON, WILLIAM BEVERLEY
HARRELL, DOLORES SYDELLE
HARRINGTON, BETH L.
HARRINGTON, JERRY MARIE
HARRISON, ELIZABETH DAGUERRE
HARRISON, MAXINE
HART, JAMES MORRIS

HARTMAN, HOWARD EVERETT
HARTMAN, MARY ELEANOR
HATWIG, VICTOR EDWIN
HARVESON, LLOYD CULLEN
HARVEY, YOLANDE JUNE
HASH, JERREL C.
HASSLER, BETTE RAE
HASTINGS, MARY ANN
HASTINGS, SAM HENRY
HAWK, FRANK ADELBERT
HAWLEY, HAROLD M.
HAXTHAUSEN, MARCELLA FAYE
HAYES, BEVERLEY ROSELLE
HAYES, MARY ELLEN
HAYES, MAY A.
HAYHURST, ROSS BAILEY
HEALY, PAT J.
HEARD, JACK FLEWELLEN
HEARN, MARY EDITH
HEBERT, EDNA LOUISE
HEESCHE, URSULA
HEESCHE, WERNER H.
HEIMAN, FRANCES JANE
HEINEMJER, THEODORE JOHN
HEINRICH, BETTY LEE
HELVERING, GENEVA DEANE
HELTON, FRANCES RUTH
HENDERSON, WARREN DEBS
HENDRIX, FRANCES LORRAINE
HENDRIX, LENORE MARIE
HENNINGTON, HENRY MORELL
HENLEY, NELLIE LEAH
HENNING, ESTHER VINCENT
HENSKE, EDNA LOTTIE
HENSKE, ELMO JOHN
HERMANN, ATHALIE ARMSTRONG
HERZIK, CHARLES ERWIN
HESTER, WALTER
HETHERWICK, HENRY LAWSON, JR.
HEYNE, ROLAND
HICHENS, HEDLEY C.
HICKERNELL, MARY JEAN
HICKERSON, J. FLETCHER
HIGGINS, WILLIAM NOBLE
HIGHTOWER, FLORENCE JOSEPHINE
HIGHTOWER, JOSEPHINE
HILL, ANN
HILL, DR. AUSTIN E.
HILL, FRANCINE
HILL, HARRY LOBIT
HILL, JOHN ELLIS
HILL, LOUISE
HILL, RALPH KELLY
HILL, WILSON WESLEY
HILLMAN, HAROLD H.
HILLEY, MARGARET MILDRED
HILLS, MRS. MERLE
HILTON, DOROTHY RAY
HINDMAN, JAMES WILLIAM, JR.
HINDMAN, LEWIS DUNCAN
HINES, THEO
HINSON, HUBERT HUGH
HINSON, JAMES
HOCKMEYER, GEORGE RANDOLPH
HODGES, MRS. FRANK
HODGES, WANDA LORENE (MRS.)
HOGAN, CHARLOTTE M.
HOGAN, MARY JO
HOGWOOD, BUDDY WILLARD
HOLLAN, GORDON D.
HOLLAND, ELIZABETH
HOLLAND, MARY KATHERINE
HOLLOWAY, MARY JANE
HOMER, JOSEPH FREDERICK
HOOPER, JULIA DEE
HOOPER, MARTHA JANE
HOOPER, WILLIAM ROBERT
HOPE, HARRY ELMER
HOPWOOD, THOMAS WILLIAM
HORD, RAYMOND NEIL
HORN, JIMMIE ROWLAND
HORSTMAN, LYDIA FLORENCE
HORTON, HENRY WELDON
HOSEK, MARGARET MARIE
HOSKINS, LOUISE

HOUGHTON, GEORGE LEWIS
HOUSE, MARCUS
HOUSE, MILDRED LOUISE
HOUSTON, BETTY M.
HOUSTON, CARL PRESTON, JR.
HOUSTON, GORDON MAYNARD
HOUZE, JOHN HENRY, JR.
HOWARD, BEULAH ELIZABETH
HOWARD, DOROTHEA M.
HOWARD, KENNETH S.
HOWELL, LEE HOBART
HOWELL, SHIRLEY MAURINE
HOWTON, BRUCE JAMES
HRIVNATZ, ESTHER VIRGINIA
HRUSKA, ROBERT JOSEPH
HUBBERT, RUTH EVELYN
HUBBARD, JADWIN ROBERT
HUDECK, FRANK JOHN
HUEBNER, WILMA ESTELLE
HUGE, AUGUST FREDERICK
HUGHES, ROY DAVID
HUMBURG, EMMETT ELTON
HUMPHRYS, JAMES WENDELL
HUMPHREVILLE, WILLIAM EDWARD
HUNT, MRS. EPPSIE A.
HUNT, EUNICE GENEVA
HUNT, DAVIS D.
HUNTER, INA FAE
HUNTER, JOHN FRANCIS
HURLBY, BARBARA LEIGH
HURLEY, KATHRYN LOUISE
HURST, EDWARD ANSLEY
HURST, HARRY EDWARD
HURWITZ, PAUL A LOIS
HUTCHINSON, FRANK YOUNG
HUTCHISON, FENTON HEWES
HUTCHISON, WINNIFRED V.
HUTTO, O. D.
HYSON, FLOYD RAVILLA

ISBELL, JACK DONOVAN

JACKSON, JAMES HILL
JACKSON, MARY LOUISE
JACKSON, WALTER
JACOB, DARIA ELIZABETH
JACOBS, MOSELLE SYLVIA
JAMES, LAWRENCE BERNARD
JANDER, PHILIP LATHAM
JARBOE, JAMES ALOYSIUS
JARESH, ANTOINETTE AGNES
JARRATT, MATTIE LEE
JEFFERIS, MARY ALICE
JEFFERS, DELLA MAE
JENKINS, RICHARD W.
JENKS, BETTYE MARCELLA
JENSEN, FRANCES ELAINE
JESSEL, JOSEPH BRAND
JETT, SARA
JIRCIK, ROBERT ALLEN
JOFFRION, BUDDY FRANK
JOHNSON, CARL IRVIN
JOHNSON, CATHERINE DUFFY
JOHNSON, CHARLES GORDON
JOHNSON, CORINNA
JOHNSON, DICK DOWLING
JOHNSON, EDWARD HARRISON
JOHNSON, ELOISE CAROLINA
JOHNSON, J. DALTON (MRS.)
JOHNSON, J. DALTON
JOHNSON, JOHN FREDRIC
JOHNSON, JOHN RUFFIN
JOHNSON, MARY SUSAN
JOHNSON, ROBERT E. LEE
JOHNSON, SARA M.
JOHNSON, THELMA JEANNE
JOHNSON, WANDA ARINE
JOHNSTON, DORIS JEAN
JOHNSTON, ELVA LOGAN
JOHNSTON, IRA RAYMOND
JOHNSTON, MADGE
JOLLY, JAMES F.
JONAS, RUSSELL CARLTON
JONES, ALICE SUE
JONES, BILLY HERBERT

JONES, CARROLL VIRGINIA
JONES, CLAIRE JEANNE
JONES, FRANCES CAROLYNN
JONES, HOMER YALE
JONES, JUNE CELESTE
JONES, LOUIS OSWALD
JONES, MARGARET ADELLE
JONES, MARGARET ANN
JONES, MARY FRANCES
JONES, NIMA LUCILLE
JONES, ROBERT SHIVE
JONESON, WILBUR EUGENE
JORDAN, BENNIE GRACE
JOYCE, BRUCE ANTHONY
JUNG, DOROTHY ANN
KAHLDEN, SHIRLEY HARGROVE
KAPLAN, ROSELLE
KAISER, DAVID
KAMINSKY, MAX
KARN, ELIZABETH ANN
KEATHLEY, MARY REBECCA
KEDING, LEE S.
KEEP, PATRICIA
KEENAN, WILLIAM HOWARD
KELLER, GRACE
KELLEY, ROY DENTON
KELLIS, DANIEL
KELLOGG, CARL C.
KELLY, HERBERT LOUIS
KELLY, JOHN
KELLY, MICHAEL VERNON
KELLY, ROBERT RAYMOND
KELM, RUSSELL, WILLIAM
KENDALL, FRANK RUSSELL
KENNEDY, ANN
KENNEDY, GERALD JAMES
KENNON, CROCKETT ELLIOTT
KETTERINGHAM, BILLIE JANE
KIETZMAN, MAURICE DUANE
KIETZMAN, PATRICIA LOIS
KIHNEL, MYRTLE CLAIR
KINCANNON, LORENE DOROTHY
KING, ALFRED THOMAS
KING, NELDA VERNON
KING, ROBERT VERNON
KIRK, JOY THOMAS
KIRK, WILLIAM HENNESSEE, JR.
KIRKLAND, OPAL AVIS
KIRKPATRICK, JIMMIE FRANCES
KIRSHMAN, SHIRLEY EUGENE
KISSEL, VIOLA MAY
KLAVENESS, ALF
KLEEMAN, LEE A.
KLEIN, HELEN MARGARET
KNOFF, EVELYN LOUISE
KOCH, DOROTHY LOIS
KOENIG, EMIL HERMAN
KOETTER, JUERGEN
KONKEN, JANE OLIVETTE
KOPECINSKI, ANDREW HENRY
KOPECKY, JOHN CHARLES
KOPPEL, GUSTAV JOSEPH
KORFF, MIRIAM CLOTEEL
KOSAN, ERNEST CHRISTOPHER
KOSUT, JOHN
KRIESLER, HAROLD
KRENEK, LILLIAN ELIZABETH
KRETZSCHMAR, KARL
KRONING, VERNA ELIZABETH
KRONZER, ISABEL JANET
KRUSE, NOBLE IVAN
KUGLER, GERTRUDE STELLA
KUHN, HERBERT CREAGH
KURITZA, WALTER MYRON

LACAVERA, PHILIP JOSEPH
LACY, BESSIE JANE
LADD, CLARENCE TOLBERT
LAGLER, STEPHEN
LAIRD, BETTY
LAIRD, RUTH
LANCASTER, TOMMY BINGHAM
LANDER, ESTIS DURWIN
LANDRAM, ELMA COTTRELL
LANE, MRS. LILLIAN WATTS

LANGFORD, OTELL F.
LANTRON, HENRY LOUIS
LARIMER, CHARLES ROGER
LARIMER SUZANNE ELIZABETH
LARIMER, THORNTON GARRETT
LASSETER, GLADYS
LAWHON, CHARLES
LAWLER, ARTHUR
LOWRIE, ROBERT JAMES
LAWS, MARJORIE
LAWSON, JAMES LEE
LEACH, JOHN ANTHONY
LEAHY, WILLIAM WYATT
LEARNED, CARROLL PRESCOTT
LEAVITT, MABEL LOUISE
LEDERED, PAUL ALOIS
LEE, JOSEPH WILLIAM
LEE, MACK EDWARD, JR.
LEE, THOMAS WOODROW
LEESEMANN, LILLIAN
LEFF, ANNETTE SARAH
LEGGETT, ELMER RILEY
LEGGETT, JAMES WILSON
LEGLER, EDNA A.
LEIGH, VIRGINIA NEVILLE
LEINWEBER, GERALD FISHER
LEITCH, JOHN VICTOR
LEKEBUSCH, ILSE MARIE
LeMAIRE, ALPHONSE JOHN
LEMON, HILDA LONG
LENZEN, PAUL
LEO, GEORGE
LEON, HAROLD U.
LEONARD, C. H.
LERA, ORLANDO
LESH, JACQUELINE
LESHIKAR, MRS. LILLIAN LEE
LESLIE, ROB ROY
LESTER, BETTIE
LESTER, MARION HUDSON
LESTER, MARY ELIZABETH
LEVERETT, LYNN
LEVIN, ELLIOTT HERMAN
LEVINE, ISADORE
LEWIS, JAMES ILOYD
LEWIS, KATHERINE
LEWIS, RAYMOND
LEWIS, VIVIAN ROSALEE
LEWIS, ROBERT LEE
LIESTMAN, WELTON O.
LIGHTNER, MRS. W. E.
LILES, WILLIAM NEWTON
LINAM, CLARENCE JOSEPH
LINDEMANN, ALEEN MAE
LING, ROBERT REYNOLDS
LINNENBERG, EVELYN MARGUERITE
LIPPER, ELAINE
LIPPER, LUCILLE
LISTI, LUKE LOUIS
LITOWICH, JACQUELINE
LOBIT, JOE EDWARD
LOCHEED, EDWARD WILSON
LOCHEED, MILDRED MAUDE
LOCHER, EBEN HUNTER
LOCKARD, JUSTA EMMA
LODLE, JO R.
LOGAN, CHARLES OMAR
LOHSE, EDGAR ALAN
LONG, EUGENE OTIS
LONG, JOHN LEWIS
LONG, MARY EARL
LONG, MILLICENT MAURICE
LOOP, MARGARET LOUISE
LOPEZ, J. CRUZ
LORD, GEORGE FRANK
LOVE, JACK EDWARD
LOVEJOY, DONNA
LOVITZ, HERMAN
LOWE, PERCY
LOWE, VERNON WALTER
LOVIS, THEODORE STREMMEL
LUNDY, MARY FRANCES
LYNCH, FRANCIS CALHOUN
LYNCH, JAMES GILINDER
LYNE, EVELYN LUCILE

LYNE, WILLIAM HENRY
LYON, SARAH BRYAN
LYTLE, FRANK CALLEN
McANALLY, KATHRYNE MARY
McASHAN, EDWARD
McASHAN, ERNEST JAMES
McBRIDE, BUFORD EUGENE
McBRIDE, ESTIL OWEN
McBRIDE, FRANK EDWARDS
McCAIN, MARTIE JEAN
McCAIN, MRS. MARTIN
McCANN, JACK TAYLOR
McCANN, JEWELL
McCARTER, JAMES CLIFTON
McCARVER, JOHN HENRY
McCLELLAN, LEROY B.
McCLENNY, GRACE LEE
McCALLICK, HUGH E.
McCOLLOCH, SAM PHILLIPS
McCONNELL, EDGAR M.
McCONNELL, HARRY ROBERT
McCONNELL, MARGARET
McCONNELL, NOBLE
McCONNICO, ARA JEAN
McCORKLE, LUTHER PAUL
McCORMICK, KENNETH ANCIL
McCOY, JOHN CHARLTON
McCRACKEN, LEROY SAMUEL
McCREARY, MARY MARGARET
McCUTCHEON, HOPE ANNE
McDAVID, ELOIS
McDONALD, JOHN ORVILLE
McDONALD, JOSEPH CHESTER
McELVY, HELEN
McGEE, JAMES HENRY, JR.
McGEEVER, MARIAN
McGEHEE, ELIZABETH
McGEHEE, ROBERT GENE
McGILL, WALTER SCOTT, JR.
McGINNIS, FRANK JEFF
McGINTY, CHARLES FLATO
McHENRY, JACK FRY
McHENRY, THOMAS RANDOLPH, JR.
McKENNEY, FRANK STOCKTON
McKENNEY, LYNN
McKIM, CHARLES MILLER
McKINNON, VERNON C.
McLAUGHLIN, GEORGE O.
McLAUGHLIN, JOHN P.
McLAUGHLIN, KEN V.
McLEAN, HARRY R.
McLELLAND, KATHRYN ELIZABETH
McMAHON, MARIETTA C.
McMEANS, ROBERT HOWARD, JR.
McMILLEN, DELPHENE E.
McMULLEN, MARY DELL
McMULLIN, PEARL
McNULTY, JAMES WALTON
McQUHAE, ALLEN, JR.
McSHAN, ROBERT LOUIS
McTERNAN, ADA KATHERYN
McWILLIAMS, EDWARD CARROLL
MAAS, BERNICE SYLVIA
MABRY, MARY GENE
MacCALLUM, MARGARET
MAH, DORIS ANNA
MACKENZIE, LEOTA B.
McLAUGHLIN, FRANCES EUGENIA
MAHAFFEY, MORRIS DALE
MAHAFFEY, A. RAYMOND
MAHONEY, WALTER F.
MAJORS, DAVID PRESTON
MALLETT, JOHN S.
MANAHAN, FLORENCE ALENE
MANCIB, ROBERT BRUCE
MANES, RHODA EVELYN
MANESS, VERLA MAE
MANG, CONRAD DELL
MANN, ANTHONY
MANN, HENRIETTA ANNA
MANN, PATRICIA
MANNES, MARIAN
MANRY, JOHN THOMAS III

MANRY, MARY JO
MARASEK, WILLIE ROBERT
MARCY, WAYNE ELMER
MARKS, TOM
MARONEY, JAMES FRANCIS
MARSHALL, DORIS
MARSHALL, HULEN ADRIAN
MARSHALL, MARY PAULINE
MARSHALL, RUFUS FARRELL
MARTIN, ASA LEON
MARTIN, DOROTHY JEAN
MARTIN, JAMES BRYSON
MARTIN, LESTER CYRIL
MARTIN, SIDNEY
MASON, AGNES
MASON, RICHARD ANTHONY
MASSEY, JASPER EARLE
MASSEY, KING WILBURN
MAST, GRAVILLE WHITMORE, JR.
MAST, MATALIE (MRS.)
MATHER, WALTER SCOTT
MATLOCK, CORBETT EUGENE
MATLOCK, DOROTHY MARIE
MATNEY, CHARLES BINNIE
MATSUMOTO, KEIGE
MATTHEWS, RICHARD LOUIS
MATTHEWS, ROY EUGENE
MATZKE, ERNESTINE
MAUFFRAY, ROY J. B.
MAVERICK, JOHN F.
MAVERICK, MARY AGATHA
MAXWELL, BILLY EUGENE
MAXWELL, JACK
MAY, LESTER RATHBUN
MAYES, JONNIE IRENE
MAYNARD, EDWIN PULLAN, JR.
MAZOW, EDYTHE
MEDCRAFT, HARRY LEROY
MEDELLIN, ANTOINETTE
MEINE, FRANK FREDERICK, JR.
MELANSON, LOUIS A.
MELTON, ALAN SIGAL
MENEAR, WILLIAM JAMES
MENEFFEE, INEZ (MRS.)
MENEFFEE, THOMAS WESLEY
MEREDITH, ANITA
MERRILL, JAMES RADCLIFFE
MERRITT, CYNTHIA MARIE
MERRITT, HAZEL L'AVERNE
MERRITT, JOHN GUY
MESIROW, BEATRICE
METCALF, HUGH EDWARD
MEYER, ANTHONY GERIT, JR.
MICHELS, BETTYE JANE
MICHELS, JUNE
MIDDLETON, JACK ARVA
MIKS, CLAUDE E.
MILES, ELLISON
MILLER, ARTHUR LEE, JR.
MILLER, BOYD K.
MILLER, CHARLSIE LEE
MILLER, CHARLES WILLIAM
MILLER, CHRIS
MILLER, ESPEN N.
MILLER, GEORGE WILLIAM
MILLER, HORTENSE
MILLER, HUBERT M.
MILLER, JAMES ARTHUR
MILLER, MARGARET JUANITA
MILLER, PAUL B., JR.
MILLER, RALPH DUNCAN
MILLER, ROBERTA EUGENIA
MILLS, ARTHUR K.
MILLSAP, MRS. LEON
MILLSAPPS, STUART CRANFORD
MILSTEAD, EARNESTEEN
MILSTEAD, FRANCES
MILSTEAD, NEIL THOMAS
MIMS, WESLEY GREENE
MINAHAN, JOSEPH JAMES
MINTIE, MARJORIE
MITCHELL, ANTOINETTE MARIE
MITCHELL, DANIEL C.
MOBLEY, HAROLD M.
MOFFATT, ROBBIE MAE

MOKLE, CHARLES B.
MOLESWORTH, ELEANOR MARGARET
MONAGHAN, NORMA ELIZABETH
MONROE, FRANK HENRY
MONTGOMERY, JESSIE LUCILLE
MONTGOMERY, LAMURIEL
MONTGOMERY, WILLIAM ROBERT
MOODY, ALICE MAE
MOORE, CHARLES BERKLEY
MOORE, F. WESLEY
MOORE, HALL HOWARD
MOORE, HELEN JO
MOORE, MARGARET A.
MOORE, MARION MARGARET
MOORE, ROBERT M.
MOORE, THOMAS ANDREW
MORCOM, WILLIAM CHARLES
MORGAN, ARTHUR DALLAS, JR.
MORGAN, ERSULA LAURA
MORGAN, JAMES RODERICK
MORGAN, LEON EDWARD
MORGAN, LEROY WASHINGTON
MORGAN, MARGARET A.
MORGAN, SUSAN VERN
MORRIS, BEULAH RUTH
MORRIS, JACK
MORRIS, JUANITA CHARLOTTE KING
MORRISON, JOYCE
MORSE, RETA MAE
MORTON, BEULAH KATHERYN
MORTLOCK, SUZANNE CLARK
MOSER, EDMUND ANDREW, JR.
MOUTH, JAMES HARRY
MUELLER, RALPH H.
MUELLER, THELMA
MUGNIER, JUNE NANNETTE
MUGNIER, MILAS ARMAND
MUHL, HAZEL MARGARET
MULLIN, JERRY CECIL
MULVEY, DANNY HOWARD
MULVEY, MARY ELEANOR
MURDOCH, ERNEST JOHN
MURPHREE, HELEN MARIE
MURPHY, BETTYE RUTH
MURPHY, RANDEL LEE (PAT)
MURRAY, JOHNNYE W.
MUSGRAVE, BARBARA STEWART
MUSHAWAY, GROVER LEE
MYERS, NORMA ARDATH
MYRICK, JOHNNIE LOU

NATHAN, SELMA
NAYLOR, ELIZABETH LOUISE
NAYLOR, FRANCES
NEALE, JOHN DALTON
NEEL, MARVIN ELLIS
NEIBEL, CHARLES DICKINSON
NELSON, OSCAR CUTLER
NELSON, VERNON ALAN
NESBITT, DORIS MARGARET
NESMITH, OLIVER DRURY
NEUBAUER, C. A.
NEUHAUS, BEN B.
NEUMEYER, ESTHER LEE
NEVILLE, ALFRED EDWARD
NEWMAN, CARLTON BLAKELY
NEWMAN, EMMETT WAYNE
NEWTON, FRANCIS
NEYLAND, CHARLES E.
NICE, MARY MARGERY
NICHOLL, THOMAS HILL
NICOLAI, ERNEST O., JR.
NICOSIA, JOHN JOSEPH
NIDAY, JAMES EDMUNDSON
NOONAN, WILLIAM GEORGE
NORMAN, JAMES STANFORD
NORRIS, RAYMOND FRANCIS
NOWELL, R. H., JR.

O'BANION, ROBERT WILLIAM
O'BRIEN, PATRICIA
O'BRIEN, VIRGINIA LEE
O'CONNOR, FRANCES EDITH
O'DONNELL, FRANCES PATRICIA
O'KELLEY, ELSIE MAURINE

OLDHAM, HAROLD KENNETH
O'LEARY, ROBERT HOWARD
OLIVER, THELMA JOYCE
OLSON, ALBERT EUGENE
OLSON, JACK NANCE
O'NEAL, BILLY
OUTLAW, HOWARD EARLE
OUTTERSIDE, LAURA VARNER
OUZTS, WILMOT BENJAMIN
OVERSTREET, WAYNE
OWEN, BOBBY
OWEN, BYRON GLENN
OWEN, RUBY BOREN
OWENS, BERNICE FRANCES

PAGE, JAMES A.
PALEY, HYMAN WOLFE
PALMER, RALPH A.
PAPAS, NICHOLAS JOHN
PAPPAS, CHRISTO JAMES
PAPPAS, PETE JAMES
PAPPAS, THAMES JOHN
PAPPAS, VASIL
PARK, MARY JANE
PARKER, CHARLES T.
PARKER, CHARLES S.
PARKER, JIMMIE EUGENIA
PARKER, LILLIAN ANN
PARKER, MARILYN FRANCES
PARKER, MARY LILLIAN
PARKER, WILLIAM HOWARD
PARKS, ELWYN EUGENE
PARIETTE, JOHN ROBERT
PARSONS, MILDRED ALEENE
PARSONS, WARREN HILL
PASTER, GARNETT
PATTEN, MARY OLIVE
PATTERSON, DOROTHY CADE
PATTERSON, EDWARD W.
PATTERSON, JERRY DAN
PATTON, BETTY JANE
PATTON, CHARLES EDWARD
PATTON, JOE BONTZ
PAYNE, KAY ELLSWORTH
PAYNE, T. R.
PEDEN, BILL FOREMAN
PEET, WILLY GEORGE
PEEVEY, RODNEY FRANCIS
PELLERIN, MARIAN
PELLERIN, ROSE MARY
PELTON, RALPH EDWINN
PENA, SAM M.
PENICK, ROBERT FRANK
PENICK, VERNON ELLSWORTH
PEREZ, ALEXANDER
PERKINS, DAROLD ELLIOT
PERNOUD, RENI
PERRY, DON
PERRY, ELSIE LUCILE
PERRY, MARGARET MARY
PERRY, ROBERT DEWEY
PERSON, BETTY MARIE
PERSON, SAM JONES, JR.
PETERS, JANE CATHERINE
PETERS, WILLIAM JOSEPH
PEHRSON, VERNON WILLIAM
PETERSON, WEED LENIN
PETHERIOTES, JAMES GEORGE
PHALEN, EILEEN MARIE
PHILLIPS, EARLE ELMER
PHILLIPS, LUCILLE
PHILLIPS, MARTHA ELLEN
PICKEL, GINGER
PICKEL, JANE
PIERCE, MRS. ALLYN
PIERCE, ELWOOD KEMPTON
PIERSON, ANDREW LUKE
PIERSON, GEORGE LIONEL
PIETZSCH, LLOYD CORNELIUS
PILIER, WILLARD
PINTSCH, ROBERT
PIRIE, JAMES EDWARD
PITCOCK, RACHEL A. (MRS.)
PITTS, MELVIN CRUSE
PLATT, ALVIN, JR.

PLILER, MARGARET ELIZABETH
PLOWMAN, AUDIE RAY
PLUMMER, RALPH WALDO
POE, MRS. CHARLES E.
POERSCHKE, VERNON
POLK, FRANK CARR
POLLAN, HOMER LAPRELLE
POLLARD, SARAH KATHERINE
POMONIS, HELEN ANGELA
POPE, ARTHUR NORMAN
PORTER, DORIS
PORTER, LLOYD A.
POTTER, EUDORA DIANA
POTTER, JOE B.
POTTER, ROBERT ROTHE
POWELL, GLORIA ANN
POWELL, NEVILLE SHELBY
POXON, CLARENCE ARTHUR
PRATT, DOROTHY MAE
PRATT, HELEN THEVENOT
PRATT, KATHRYN MARSH
PRESCOTT, CHAMBERS RICHARD
PRESSLY, JAMES DAVID
PRESTON, GLENN LINDSEY
PRIDGEN, FRANCIS LOUISE
PRIGGE, A. C.
PRINCE, GARY
PRING, PHILIP
PRITCHETT, TED ELLIOTT
PROCHNOW, CARL THOMAS
PROCTOR, STACY BEN
PROSCH, JOHN CHARLES
PRUDE, GEORGE DAMON
PRYOR, FRANK LINWOOD
PRYZANT, FANNIE
PUCCIO, ANGELENA F.
PYLE, MARY LEE
PYNDUS, GEORGE T.
PYNDUS, PHILIP RICHARD

QUAST, JOHN JULIOUS
QUINN, MARGARET HAZEL

RAAB, LULA ANNA
RADENZ, HENRY RUDOLPH
RADLEY, WALTER SIDNEY
RAGLAND, WILLIAM A.
RAINBOLT, TOM MARION
RAINEY, RICHARD BENJAMIN
RAMSEY, FRANK LOVIC
RAMSEY, NENA JUANITA
RANDALL, GLADYS JANNETTE
RANKIN, HELEN MARYANN
RAWLS, JOHN LESLIE
RAY, JUNE KATHLEEN
RAYMER, GEOFFREY MARVIN
READ, CLARK P.
READ, RAYMOND R.
REAVES, FRED THOMAS
REDDING, LUTHER RAYMOND
REDMON, CLARENCE VICTOR EUGENE
REED, ELEANOR RUTH
REED, RUBY MAE
REED, TOMMY C.
REES, LENORE
REESE, JANE HALL
REESE, JIMMIE EUGENIA
REID, CLARENCE PRESTON, JR.
REID, FRANK JOSEPH
REIFSCHNEIDER, YVONNE FRANCIS
REINHARD, EDWARD OTTO
REMMERT, ERWIN ADOLPH
RESCH, EDWARD G.
RETZER, MARGARET ELLEN
REYNOLDS, DARCEY
REYNOLDS, SARAH ALICE
RHEMANN, LLOYD MAURICE
RICE, WILLIAM FRANKLIN
RICHARDSON, HARRY LELAND
RICHARDSON, JAMES ALBERT
RICHARDSON, PAULINE KENNEDY
RICHMOND, RUTH
RICHTER, MARTHA MARGARET
RICKS, JEAN CAROLYN
RIDLEY, THOMAS PENNINGTON

RIDLEY, WALKER ALVAN
RILEY, JAMES MARK
RISIMGER, LEWIS
ROACH, CHARLES ELMORE
ROARK, ETHEL H.
ROARK, MRS. FAYE B.
RABB, HAROLD SIMMONS
ROBB, CLARENCE M.
ROBBINS, EVELYN EDWARD
ROBERTI, GINGER LAWRENCE
ROBERTS, BLANCHE VIRGINIA
ROBERTS, BRUCE CLAIR
ROBERTS, EMMETT THORNTON
ROBERTS, PHILIP
ROBERTS, ROBERT JESS
ROBERTS, THEODENC ERASMUS
ROBERSON, HURLEY C.
ROBERTSON, JOAN
ROBERTSON, L. P.
ROBINSON, LAURA L.
ROBINSON, LEROY
ROCHE, FRANK BRUN
ROCHEELE, WILBUR N.
ROGERS, FRED CLOUD
ROGERS, GENE SUMNER
ROGERS, HARRIETT KNOWLES
ROGERS, MRS. MARGUERITE
ROGERS, STANLEY FRANCIS, JR.
ROGERS, WILLIAM EDGAR
ROGERS, VIRGINIUS CULLUM
ROGILLIO, JOSEPH BURT, JR.
ROLLINS, JACK KEITH
ROOS, LEON JOHN
ROGUEMORE, FRED OSCAR
ROSE, DOLLY LOU
ROSE, GEORGE GIBSON
ROSENDAHL, HARRIET MARIE
ROSEN, BERNARD
ROSEN, LESTER
ROSS, SHELBY EARL
ROURKE, PATRICIA ROSE
ROUGAGNAC, HENRY ANDREW
ROTE, ORVILLE WINN
ROWE, EXA MINTER
ROWLAND, CARL
ROWSEY, LUTHER BENSON
ROZZELL, STEIRLY CHESLY
RULFS, CARMEN LUCILLE (MRS.)
RUTHENBECK, EVELYN MARIE
RUTHERFORD, ADOLPHUS PAYNE
RYAN, BERT LACY, JR.
RYEMON, ABE MILTON
RYEMON, SYBIL THELMA
RYMAL, GEORGE ROBERT
RYON, JOHN L.

SABOM, FELICIA
SABOM, ROBERT F.
SACCOMANNO, I. JAMES
SADLEIR, FRANK
SAHLEN, LEONARD OLIVER
SAIBARA, WARREN G.
SALING, SHIRLEY JEAN
SAMPSON, EMMA BELLE
SAMPSON, OTIS ALWYN
SAMUEL, JOSEPH W.
SANDERS, HAZEL MARIE
SANDOW, KEN
SANDS, VELMA E.
SANFORD, GENEVA ARLVA
SAPHOS, PAUL NICK
SARGENT, JOHN JOSEPH, JR.
SASS, WILLIE McCALEB
SAUNDERS, CHARLES ALBERT
SAUNDERS, NORMA JEAN
SAUR, STANLEY REX
SAUTER, GERALDINE JANE
SAWTELLE, ERMINA MAY
SCARBOROUGH, WALTER W.
SCARDINO, ROBERT ALBERT
SCEARCE, JOHN BURTON, JR.
SCHILL, RICHARD THOMAS
SCHILLACI, ANTHONY
SCHILLING, GEORGE ANTHONY
SCHILLING, MERREL FREDERICK

SCHINDLER, ALOIS
SCHLEIER, ERICH EDWIN, JR.
SCHMIDT, JO KATHRYN
SCHMITT, A. ROBERT
SCHNURR, GLADYS ISABELLE
SCHOEN, ROBERT W.
SCHOENEMANN, OSWALD MARTIN
SCHOMER, RAYMOND VIRGIL
SCHOPPE, CONRAD J.
SCHOTT, LOIS MILDRED
SCHRECKENBACH, MIKE ALFRED
SCHROEDER, JAMES M.
SCHULTZ, ALFRED ALBERT
SCHULTZ, ELTON FRED
SCHWARTZ, JOHN CARROLL
SCHWARZ, CHARLOTTE MAURICE
SHWECKE, MADELEINE BOUDOUIN
SHWECKE, NORMA JEAN
SCOTT, HARRY VADEN
SCOTT, H. CLARK
SCOTT, LUCILE OLIVE
SEBASTA, MARION GAYLE
SEGAL, SYLVIA
SEGELQUIST, JOHN EDWIN
SEIDER, SAUL DAVID
SEIDLER, MIRIAM G.
SELLERS, PRESTON TEODULE
SEMAAN, JIMMIE
SEPPER, JUDITH GRACE
SHANE, JENNIE LEE
SHARP, JOHN BURTON
SHARPLEY, JAMES WESLEY
SHAW, GLADYS WINIFRED
SHAW, GRETCHEN NADENE
SHAWVER, LOIS
SHEBAY, ANDREW GEORGE
SHEFFIELD, ARVENA JOHNSON
SHEFFIELD, JEAN WHITE
SHELTON, FRAZIER CLIFTON
SIMES, NED EDWARD
SIMMS, EDWARD
SIMON, ANTON RAYMOND
SIMON, ARTHUR HENRY
SIMONS, HERMAN H.
SIMONS, LeROY HOLMES
SIMPSON, A. MARJORIE
SIMPSON, CHARLES DUNCAN
SIMS, RUTH LUCITA
SINCLAIR, WILLIAM NOEL
SINGLETON, MARY EDNA
SKELTON, JAMES AUSTIN
SKIPPER, MRS. KATHRYN RHODES
SLATAPER, LOUISE LEAH
SLATTERY, JAMES ARTHUR
SLIGH, LEIGHTON RALSTON
SMALL, HERSCHEL GLYNN
SHEPARD, LOUIS C.
SHEPHERD, HARVEY MELLOR
SHEPHERD, MADELINE
SHEPHERD, NELLIE B.
SHERFY, LOIS MARIE
SHERMAN, KATHRYN ELIZABETH
SHERRILL, PATRICIA LOIS
SHERRILL, WADE HAMPTON
SHERRILL, WILLIAM H.
SHERROD, JEANNE
SHIELDS, CHARLES NELSON
SHIMEALL, WAYNE KERMIT
SHINDLER, OWEN ELLIOTT
SHINDLER, WILMA
SHINN, BOYD CLIFTON, JR.
SHOWS, MRS. CLARA CODETTE
SHUMBERG, EMIL J.
SIKES, WELDON DRAKE
SMALL, JACK MONTY
SMALL, WILLIAM A.
SMITH, ADICE CAMERON
SMITH, ALLAN GREGORY
SMITH, ALAN McKINNEY
SMITH, ARTHUR WILLIAM
SMITH, BETTY JANE
SMITH, BEVERLY FAITH
SMITH, BILLIE TOM RIEGER
SMITH, BLAKELY
SMITH, CLARENCE

SMITH, DAURICE LEA
SMITH, EDNA MAE
SMITH, EDWARD ERNEST
SMITH, ELLIS H.
SMITH, FRANCES LEE
SMITH, GEORGE WINSTON
SMITH, H. LESTER
SMITH, JACKSON BERKLEY
SMITH, JEROLD DWIGHT
SMITH, JOHN NEWMAN
SMITH, LUTHER CREATH
SMITH, MARGARET ELIZABETH
SMITH, MARY LOU
SMITH, MURIEL
SMITH, R. FALVEY
SMITH, BAIRD KINGSWELL
SMITH, RUTH AMELIA
SNAPP, E. A.
SNELL, ARTHUR HENRY, JR.
SNODGRASS, ROBERT WILLIAM
SNYDER, ELCHARD EDWIN
SNYDER, LAFAYETTE GORDON
SOLOMON, MARGARET
SONNENFELD, ELISABETH BERTHA
SoRELLE, LAURA ELLA
SORRELL, BENNIE JOHN
SOULE, FINLEY M.
SOULE, PATRICIA
SPAIN, HORACE H.
SPARR, BILL GEORGE
SPEAR, WILLIAM WARDEN
SPEER, SIM LYLE, JR.
SPEIGHTS, JUNIUS LEE
SPEIGHTS, RUDOLPH ALTON
SPENCER, BILL HOOVER
SPENCER, BILL HUNTER
SPENCER, MRS. MYRTLE W.
SPENCER, FRED CHARLES
SPIVAK, RUTH FLORENCE
SPRABERRY, MARGUERITE
SPRADLY, WILLIAM EDGAR
SPRAGGINS, HAZEL LOUISE
SPRAGUE, WILLIAM HOWARD, JR.
SPRAWLS, HAROLD FRANKLIN
SPRINGER, TED T.
SPROCK, ELIZABETH LILLIAN
SPOULE, HARRYETTE
SQUYRES, CONNER J.
STAFFORD, AMIL CELLA
STAKEMILLER, DOROTHY BOB
STALLINGS, FLORA LOUISE
STANFORD, MARTHA ANN
STANFORD, WALTER OTTO
STANLEY, FELIX MORLAN
STARKE, ROBERT OWEN
STAINÉ, HAROLD ADELBERT
ST. CYR, GEORGIA MAY
ST. CYR, LEROY VARNER
STELL, BILLY CARLTON
STENDEBACH, WILLIAM NOLAN
STEPHENS, DOROTHY GLYNN
STEPHENSON, VIRGINIA KATHERINE
STEVENS, BRADFORD VERNON
STEVENS, VANCE LEE
STEWART, JACK
STEWART, JOHN PAUL
STEWART, KING
STEWART, NELL JEAN
STEWART, RUTH B.
STEWART, RUTH BERTHA
STEWART, V. A.
STRICKLER, IRA WILBUR
STIEGHAN, BILLIE WIRT
STILLMAN, MILDRED JOYCE
STIRTON, ANDREW WILLIAM
STIRTON, JEANNIE
STOCKWELL, BEVERLEE SHERWOOD
STOKELY, CHARLES FRANCES
STOLZ, RAYMOND CHARLES
STONE, EDWARD MORONI
STONE, EVELYN
STONE, SHERMAN LEE
STONECIPHER, ROLAND
STOREY, INEZ BELLE

STOVALL, MARILEE
STOVALL, O. A., JR.
STOPPLE, WILLIE VIVIENNE
STREB, ARTHUR EDWARD
STRICKER, GEORGE ANN
STROM, REGINA DOROTHEA
STRONG, SETH
STROUD, BILLY GEORGE
STROUD, CLYDE POWELL
STROZIER, MAUDE H.
STURGIS, MADELYN ALFREDA
SUE, J. O.
SULLIVAN, ROBERT W.
SUMMERS, JOSEPH FRANK
SUMMERS, ROSEMARY VINA
SUTHERLAND, JOHN DENHAM
SUTTLES, EDWARD LILLO
SUTTON, CHARLIE MERLE
SWEENEY, JOHN ALEXANDER
SWIRSKY, PAUL S., JR.

TALBOT, L. MARVIN
TALBUTT, MARGARET
TALBERT, W. C., JR.
TAPP, BOMAR HART
TARTAKOV, FANNIE
TASH, DANIEL BERRY
TAUB, HENRY
TAUB, JOHN BEN
TAYLOR, BILL P., JR.
TAYLOR, HASSELL GREGG
TAYLOR, IDA GRACE
TAYLOR, JOSEPH WALTER
TAYLOR, ROBERT LOUIS
TAYLOR, ROBERT M.
TEMPLETON, LLOYD NEIL
TENNANT, JOE ALLEN, JR.
TENNANT, J. PARCHAL
TENNANT, ROBERT F.
TENNEY, JUNE
TERRY, GEORGE F.
THARP, PHILIP, JR.
THAYER, JESSIE ELLEN
THICKSTUN, G. BERNICE
THICKSTUN, HAZEL MAE
THIELE, EMILY AUGUSTA
THIGPEN, MAYE BUTTERFIELD
THOMAS, EDWARD EUSTACE
THOMAS, MARY LOUISE
THOMPSON, ARTHUR JAMES
THOMPSON, BIRDIE D. MRS.
THOMPSON, CHARLES DUKE
THOMPSON, HARVEY LEE, JR.
THOMPSON, ERA
THOMPSON, JAMES DEMPSEY
THOMPSON, HOMER SCOTT
THOMPSON, JAMES ROSS, JR.
THOMPSON, MILTON LEROY
THOMPSON, WILLARD ABJAH
THOMPSON, WILLIAM STONE
THOMSON, CECIL M.
THORNTON, GLENERA
THURMOND, MARION JEAN
TIBBITTS, JEAN FRANCES
TILLMAN, BERNICE ELISABETH
TILTON, NEWELL EDWARD
TIPS, GEORGE RATHER
TIPPEN, HOMER BENDER
TISCHER, ELOISE
TOBOLA, NELROSE
TODD, CORDELIA MAY
TODD, EVELYN THERESA
TOOMEY, BUDDY MICHAEL
TOPEK, ESTHER MARLENE
TOWELL, BILLY HUMPHREYS
TRAYLOR, ALBERT EMORY
TREMAINE, FRANCES JUDSON
TRITICO, FLORA GIGLIOTTI
TRITICO, LEONARD FRANK
TRONCALE, MICHAEL CHARLES
TROTTER, JAMES
TROWBRIDGE, MABIE FRANCES
TUCKER, JOHN MURPHY
TUFFLY, JOSEPH B., JR.
TUFFLY, ROSE MARIE

TURNER, JAMES ERVIN
TURNER, MARY
TWILLIGEAR, THELMA LA VERNE
TYER, MRS. CORA LEE
TYNES, MARY FAYE
TYLER, JOHN CLIFTON

UGALDE, NORMA LENORE
ULLRICH, JEWEL
ULLRICH, MARY JANE
UMLAND, ALAN WERNER
UPCHURCH, JERRY SELWYN
URBANTKE, LILLIAN HORTENSE

VALENTI, JACK JOSEPH
VAN ALLEN, WALTER WEBSTER
VANCE, DUDLEY
VAN CLUTTS, GENEVA RUTH
VAN DE GAER, CLAIRE LOUISE
VAN HEKKEN, RUTH MAE
VAN LONDON, GREGORY SELLERS
VAN VELZER, MARY
VARNALL, BERNARD HENRY
VAUGHN, BERNICE HATTIE
VAUGHAN, JAMES K., JR.
VERGES, JIM GEORGE
VAUGHN, LILLIAN OPHILIA
VIERECK, TALBOT
VINES, ROBERT ASA
VINES, RUBY VALREA (MRS.)
VISER, ELOUISE WELCH
VOGELSANG, M. E.
VOLKING, ELSIE EVELYN

WADDELL, THOMAS MATHIS
WADLEY, PATTY JAYNE
WAGGONER, YVONNE MARGURIETE
WAHLBERG, HERBERT ARTHUR
WALDING, JACK H.
WALDMANN, THOMAS MASON
WALKER, FRANKLIN W.
WALKER, GEORGE LEAMON
WALKER, JAMES LEE
WALLACE, DICKSON ELLIOTT
WALSER, CHARLOTTE MARIE
WALTERS, ELIZABETH
WALTON, ONA JOY
WALTRIP, JACK WILLIAM
WANNALL, RUTH WYLLYS
WARE, WILLIAM
WARD, JENNIE
WARE, DORIS ALINE
WARE, IRA CALVIN
WARE, MARY LYNN
WARREN, HOWARD LINDSAY, JR.
WATERS, FLORENCE
WATERS, MARIENNE OPHELIA
WATSON, ARTHUR LEE
WATSON, MARY JEANNE
WATSON, NANNIE OLA
WATSON, SMEON E.
WATSON, WINNONA EILEEN
WATTS, PLEASANT LOUISE
WEAVER, PEARL V.
WEAVER, RUBY AUDREY
WEBB, NORMA MARY
WEBBER, McKENDREE HUTCHINSON
WEBRE, SAMUEL CLARK
WEEDEN, GARRETT MALCOLM, JR.
WEHRUNG, BETTE SUE
WEINBERG, ADOLPH, JR.
WEINSTEIN, HYMAN JOSEPH
WELCH, WILLIAM FRANCIS
WELLS, FRANK WHITFIELD, JR.
WELLS, HELEN FRANCES
WELLS, HARRIS PEYTON, JR.
WEST, HENRY CLOPTON
WEST, IRENE MITCHELL
WESTBROOK, M. ALLEN
WESTERFELD, MARVIN EDWARD
WESTERFELD, MAURICE URBAN
WEVER, WANDA LOUISE
WHEELER, JAMES A.
WHEELER, ROLAND SIBLEY JAMES
WHISENHANT, ROBERT RAYMOND

WHITAKER, ANDREW WESLEY
WHITAKER, CARLTON FIELDS
WHITE, GEORGE WILLIAM
WHITE, GEORGE EUGENE
WHITE, JOE T.
WHITE, LORRAINE
WHITE, SAM DAVID
WHITFIELD, GERALDYNE RUTH
WHITTEN, JOEL NEWTON
WHITTEN, STEPHEN EARL
WIEBUSCH, WALTER C.
WIER, ROBERT F.
WIGGINS, DAN EARLE
WIGGINS, JAMES MURRAY
WIGGINS, WINNIE CLYDE MRS.
WILBURN, PAUL DAVIS
WILDER, ERWIN GABBERT
WILHOIT, BILL ROGERS
WILK, MORRIS A.
WILKENFELD, JESSICA IRENE
WILKENFELD, JULIAN HURLEY
WILKINSON, LAWRENCE DWIGHT
WILLBORG, WESLEY WILLARD
WILLIAMS, CHARLES ALBERT
WILLIAMS, CLARENCE ELWOOD
WILLIAMS, EVELYN LOUISE
WILLIAMS, FRANCIS BAKER
WILLIAMS, IDA BEATRICE
WILLIAMS, J. W.
WILLIAMS, LA VELLE
WILLIAMS, LEONARD PAUL
WILLIAMS, LEWIS CHARLES
WILLIAMS, RICHARD RAYMOND
WILLIAMS, SHIRLEY MAE
WILLIAMS, WILMER MOORE
WILLIAMSON, MILDRED LUISE
WILLIAMS, MARGIE GERTRUDE
WILLIAMSON, NANALINE
WILLIS, JACK DeMARET
WILLIS, LOUIS ROBERTS
WILLKE, HERBERT ALEXANDER
WILMETH, JACK MARION
WILSON, CHRISTINE GYNN
WILSON, EUGENE V.
WILSON, GEORGIE MAE
WILSON, JOHN ROBERT
WILSON, RALPH LEE
WILSON, SUSAN MENEFFEE
WINBORN, WALTER
WINKELMAN, EDWARD WILLIAM
WINN, R. M.
WINNER, CHARLES SAMUEL, JR.
WINNER, JAMES ARNOLD
WINNING, JANE L.
WINTER, FRANCIS JORDAN
WINTERHALTER, JAMES STEWART
WISE, GEORGE EDWIN
WISENBERG, AVROHON ISAAC
WISENBERG, RUTH MIRIAM
WITTMER, OWEN WILLARD
WOESTMEYER, H. ADDISON
WOLFE, ALLEN LUTHER
WOLFE, MRS. NELL
WOLFER, WILLIE MAE
WOLFF, LEOTA ALLEEN
WOLFINGTON, LAURA ALMEDA
WOMACK, JESSE FARRINGTON
WOOD, BETTYE
WOOD, BETTYE NONA
WOOD, EMILY CLAIRE
WOOD, NORMA LYNN
WOOD, OPAL
WOOD, RAYMOND JOSEPH
WOOD, MRS. ROBBIE LAWHON
WOODBURN, MARY JANE
WOODBURN, ROBERT PRESTON
WOODRUFF, FRANK NORMAN
WOODS, CYNTHIA LORETTA
WOODS, DAN
WOODS, PAMELA L.
WOOTTON, GARNETT ROBINSON
WORHOL, IRWIN ALEXANDER
WORLEY, JAMES ELLIS
WRIGHT, ANN
WRIGHT, BETH LOUISE

WRIGHT, IVY JACKSON
WRIGHT, LEOLA HOWELL
WRIGHT, MARY OLIVE
WRIGHT, ROBERT CORNEALIUS
WYATT, JAMES ROBERT
WYATT, MARY JAMES
WYNN, ITHAL
WYNNE, GLORIA
WYNNE, M. VAL

YARBROUGH, REAGAN BAXTER
YATES, BETTY
YATES, ERNEST FRANK
YATES, SARABELLE
YERXA, THOMAS MATTESON
YOUENS, WILLIAM CLIFFORD
YOUNG, BETTY SUE
YOUNG, ROBERT JAMES

ZAGST, JOE
ZEISIG, WALTER KURT
ZENNER, EUGENE JOSEPH
ZERWEKH, CHARLES EZRA, JR.
ZETO, FRANK WILLIAM
ZIRBEL, CONSTANCE HAZEL
ZURBORG, EDNA BELLE

GRADUATE SCHOOL

ADDISON, LEAFA GREEN
AINSWORTH, MAMIE DELLE
ALLEN, ROY
ALLISON, MAMIE BRIGHT
ANDERSON, MARJORIE
ANDERSON, MAY J.
ARMOUR, ANN L.
ARMSTRONG, CLEO
ARNOLD, ALTON COLLIER
ASKEW, MRS. JEWELL EILEEN
BAILEY, AVIS
BAILEY, KATHRYN
BANKS, RICHARD JAMES
BELL, MARY
BENBROOK, JOYCE
BERWICK, KATHRYN WRIGHT
BIRATH, ELNA THUR II
BLACKWELL, BELLE McSHAY
BLOODWORTH, LALLA SMITH
BOON, ELISABETH VINT
BRANN, REGINA
BREDTHAUER, TOMMY MOORE
BRAUTIGAM, G. F.
BROTZE, ARNO GEORGE
BROWN, BETSY
BURWELL, MAUDE
CALLICOATTE, LORENA (MRS.)
CARDWELL, MRS. OPAL
CARTER, CHARLIE MAY
CHAMBERS, MARY ELIZABETH
CHAN, EDWARD KING-TUNG
CLARK, BURTON WYATT
CONOVER, CORDELLA BELL (MRS.)
COUCH, MRS. O. D.
COX, CELESTE ESTILL
DAVIS, ANNIE PEARL
DAVIS, DOLLIE GRADY
DAVIS, NELDA MAE
DAVIS, RACHEL
DEAN, DAVID BOYD
DEATS, MRS. ROBBIE YOUNG
DeWALT, LILY MILLS
DICKINSON ADELENE
DICKINSON, RODGER COMAS
DINKINS, O. T.
DISHRON, JOSEPH FOWLER
DIVER, MRS. JOHNNIE DAVIS
EARTHMAN, ADDIE MAY
ELDREDGE, MRS. LOUISA
ELLIS, MANTON
ELLISOR, LILLIAN
EMMERICK, BEULAH ANDRUS
EWING, OSWALD BOYD

FINK, EVELYN
FOSTER, FRANCES BELL
FOWLER, ANNIE LAURIE
FRASURE, WILLIAM W.
FRATCHEL, LOUIS EDWARD
GALBRAITH, ALICE JANE
GALE, J. E.
GRAF, JACK
GUINN, MRS. FLORENCE RATCLIFFE
HARLOW, MINNIE MAUDE
HARRIS, FRANCES LEE ANNAH
HAYS, BETTIE
HEMPHILL, MILDRED BAILEY
HENSON, GERTRUDE L.
HEWITT, G. W.
HICKS, ROBBIE D.
HILTON, MRS. ELIZABETH LOGAN
HODGES, ETTA
HOHL, DOROTHY
HONSINGER, MRS. REBECCA
HOOKER, RUBY W.
HOPE, MAUD HAMILTON
HUNSAKER, LORAIN D.
INGRAM, MARY
IRWIN, MRS. JOHN GARLAND
ISAACKS, MARY
JACKSON, ELNA ELIZABETH
JAMES, MRS. MARIE LOGAN
JELLY, LOUIS CHARLES
JOHNSON, HAROLD RAYMOND
JOHNSTON, GLEN LEE
JONES, ROBERTA
KELSO, ALMA STEWART
KIETZMAN, LOIS FLORENCE
KILLOUGH, MYRTLE IRENE
KING, ELECTRA
KISSEL, MRS. RUTH
KOPECKY, H. O.
LADD, MARY SHIVELY
LAMBERT, VICTOR VERNON
LAUGHLIN, MRS. E. A.
LEASE, VIVIAN COWLES
LEGGETT, MRS. DAISY
LeGROS, BERTHA KILMAN
LEWIS, MRS. H. C.
LOGGINS, MARY ELIZABETH
McCAIN, BIRDIE JIMMIE
McCLUNG, MATTIE HAYNES
McCONNELL, VIRGINIA LEE
McDANIEL, MRS. ISABEL M.
McKEE, EVA
MADDEN, JESSE ALBERT
MASON, LOUELLA MINOR
MEHR, IDA
MERRIWETHER, JOHN
MEYER, E. F.
MILLER, ARTHUR BARRETT, JR.
MILLER, BILLY WAYNE
MILLIGAN, HELEN KING
MILLS, RANDOLPH THOMAS
MILLSAP, MARGARET LOUISE
MOELLER, MARY VIRGINIA
MURRELLE, ALEXANDER CAMPBELL III
NALL, RUNIE LUCILLE
NEEL, MATTIE IVEY
NICHOLS, RALPH GREGORY
NIEMEYER, DORA ISELT (MRS.)
NISBET, MRS. E. BATES
NIXON, FREEMAN GRAVES
NORMAN, EDNA
NOTTINGHAM, FREDDA ALICE
OMEN, MARY F.
PARHAM, GRACE REAGAN
PARKER, CLARENCE CALVIN
PERKINS, WILMA
PHELPS, ELIZABETH KATHRYN
PHILLIPS, MRS. IDA G.
PITCOCK, DENICE EVANS
PLUMPER, MISS T. J.
POE, CHARLES E.
POTTER, FRANK M.
PRANEUF, STELLA
QUAM, MYRTLE V.
REED, MRS. WINNIE C.
RINEY, RIVERS BAUM

ROBERTS, OLIN
ROBERTSON, CARLITA BARBARA
ROYDER, DOROTHA GREEN
SACHS, MRS. ZELDA SCHLOM
SANDERS, MAGDALENA
SANDERS, MARY CAROLYN
SATTLER, FLORENCE
SCARBOROUGH, G. C.
SCARBOROUGH, RAYMOND L.
SCOTT, LEYLA B.
SEITZ, MRS. GENEVIEVE M.
SHAMBLIN, WILLIAM A.
SHAW, PEARL PYE
SHEBAY, ARIELLE
SHELP, MRS. ERNESTINE A.
SHRINER, HELEN E.
SHUMATE, ZELPHA EUNICE
SIMS, JAMES NATHAN
SIMS, JOSEPHINE
SINGLETON, JOE HENRY
SKELTON, MRS. MARY
SLAY, VERA MAE
SLEDGE, MARION AMELIA
SLOCUMB, DON B.
SLOSS, MERCEDES
SMITH, MRS. BESSIE BUTLER
SMITH, MRS. CARRIE LOU
SMITH, MRS. EFFIE TORMAN
SMITH, VERA
SORRELLS, DOROTHY CATHERINE
STAFFORD, RALPH LEONARD
STAFFORD, WINOGENE HEWLETT
STARK, ATMAR ROBERT
STARK, ESTELLE
STELL, JACK POWELL
STEPHENSON, SARAH JEANETTE
STILES, MRS. REGGIE LOIS
STRANGE, JULIA
STREUSAND, MRS. SADIE SHAMBLUM
TERRELL, PAULINE EARNEST
THOMPSON, MRS. EVELYN STRAUGHAN
THOMPSON, ORA
THOMPSON, OSSIE GREEN
THOMPSON, VYOLA
TOMPKINS, WILLIE OGG
VANOVER, MYRTLE HANNAH
VAUGHT, LILLIAN
VAUGHT, MARGARET
VIEBIG, VAN RICHARD
VOGLER, ED ALLEN
WALTERS, CECIL
WALTERS, ROBERT K.
WATKINS, MRS. LEONA
WEBB, MRS. NAN IRENE
WELLS, CLARENCE ASA
WERLIN, ROSELLA H.
WHATLEY, JULIA KIRK
WHISENHUNT, MRS. CHARLOTTE S.
WHITAKER, ALTON RUTH
WHITE, NELL
WHITE, W. PARKER, JR.
WINSTON, REBA
WOOD, RUTH JORDAN
WORD, GRACE
YOUNGKIN, REBECCA LEA
ZAPP, HELEN AUDREY

FACULTY

AUCOIN, ANTHONY
BAINES, ROY
BALDWIN, RAYMOND
BRANCH, HOWARD
BRANDSTETTER, JOHN W.
BROWNE, FREDERIC
BYINGTON, HELEN
CARLTON, EDITH
COCHRAN, J. C.
COOPER, DALE S.
CROUCH, ROY A.
DAASCH, FRANCIS J.

DANIELS, R. BALFOUR
DAY, EMMETT B.
DONNER, ARVIN N.
DOREMUS, E. P., JR.
DRAKE, GEORGE W.
EBAUGH, MRS. BESSIE M.
FIELDS, L. B.
FRENCH, ARCHIE W.
GREULACH, VICTOR A.
HALDANE, ROBERT
HALDEN, LEON G.
HALL, CHARLES A.
HARRIS, HARVEY W.
HELMS, H. A.
HENDERSON, S. W.
HILLER, C. F.
HOFF, JOHN EDWARD
HOOKER, LYLE T.
HOUSTON, CHARLES E.
HUNSACKER, NEVILLE C.
HUSSEY, KEITH M.
HUTCHINSON, JAMES D.
JOHNSTON, C. B.
KELLER, KATHERINE
KEMMERER, W. W.
KERBOW, ALVA L.
KESTENBERG, LOUIS
KING, BRUCE SPENCER
KUCERA, MRS. JEAN W.
LEWIS, MRS. NENA R.
LIST, H. H.
McCOY, VAL JEAN
McELRATH, EBY NELL
McROY, PAUL F.
MANFREDINI, JAMES M.
MASTEN, PLES C.
MEEK, CHARLES S.
MILLER, M. A.
MITCHELL, L. STANDLEE
PATTERSON, N. S.
PECK, LORA B.
PENNYBACKER, RUTH
POLICHINO, LOUIS
RASMUSSEN, A. A.
REES, WARREN A.

ROGERS, MRS. MARGUERITE
OSENBLAD, L. E.
SAGE, MILDRED
SCHUHMAN, E. W.
SMALL, ADDIE B.
SMITH, FRED
SOULE, MRS. FLOY P.
TALLEY, ROBERT W.
THOMPSON, MRS. EVELYN S.
VERN, JULES A.
WALTERS, ROBERT K.
WARREN, MRS. LILLIAN L.
WELCH, CHARLES J.
WERLIN, JOSEPH S.
WHEELER, R. S. J.
WHITE, ROBERT A.
WHITMAN, FLORENCE
WOODS, RAYMOND D.
WRIGHT, MARTIN

TEACHING ASSISTANTS

BAY, PEGGY GENE
BURNS, W. L.
CHEN, EDWARD
CLARK, EUGENE
CURTIS, W. W.
DAUGHERTY, F. MORTON
GOYEN, WILLIAM
HEINRICH, BETTY LEE
JONES, MRS. ROBERTA
LANGFORD, OTHELL
LEMON, MRS. HILDA
NIXON, FREEMAN G.
POOLE, MARY EDNA
POXON, C. ARTHUR
REIFSCHEIDER, YVONNE
SABOM, FELICIA
SCHINDLER, ALOIS
SHAMBLIN, BILL
SHEPHERD, LOUIS
SIMONS, LEROY

SLOSS, MERCEDES
WILLIAMS, C. E.

LIBRARY

OSBORNE, ZELDA, *Assistant Librarian*
WIKOFF, MRS. RUTH S., *Librarian*

ACADEMIC ADMINISTRATION

BENDER, MRS. PEARL C., *Dean of Women*
COBB, MARY, *Secretary to Assistant Dean*
DUPRE, NAASSON K., *Dean*
HARRIS, GWENDOLYN,
Assistant Secretary to Registrar
McMULLIN, MRS. PEARL, *Registrar*
MILLER, M. A., *Assistant Dean*
OBERHOLTZER, E. E., *President*
PICK, WANDA, *Assistant Secretary to Dean*
SCHEDLER, NELL, *Secretary to Dean*
SCHROEDER, JERRY, *Secretary to Registrar*

BUSINESS ADMINISTRATION

HILLER, C. F., *Bursar*
KEMMERER, W. W.,
Comptroller and Director of Curriculum
LEASER, LEONARD C., *Purchasing Agent*
LECLERE, MRS. ROBERTA,
Manager of Book Store
MacLACHLAN, JOSEPHINE, *Cashier*
MILLS, H. L., *Business Manager*
SCHULDA, VALASTA,
Secretary to Comptroller
SHEBAY, ARIELLE, *Cashier*
STONE, VIRGINIA, *Pay Roll Clerk*
TUCKER, MRS. T. E., *Lunchroom Manager*
WHITE, ROBERT A., *Auditor*



PICTURE
FRAME

