

# Shellegram

Deer Park Manufacturing Complex

88:10

## PAFEC celebrates first anniversary

To celebrate its first anniversary, the Quality Process support group for Chemical Operations, PAFEC (Purchasing & Administrative Services, Financial, Economics & Scheduling and Computer Services), held a Quality Awareness Day Sept. 28 at Ernie's restaurant.

At the luncheon meeting, **LINDA WILCOX**, P&AS, received the August "Quality Recognition Team Award", which is awarded monthly to a supplier or a customer of a PAFEC member organization for an outstanding Quality performance during the previous month.

In addition, the support group recognized the efforts of members to promote the Quality Process and for creating Problem Resolution Forms (PRFs) that have added to improved

See "PAFEC" on Page 3



**LINDA WILCOX, P&AS, receives the Quality Recognition Team Award for August from DEAN ZURKAMMER, manager, Chemical E&S at the PAFEC Quality Awareness Day luncheon Sept. 28 at Ernie's Restaurant in Pasadena. The luncheon, delayed for two weeks due to the impending hurricane, was held to celebrate the one-year anniversary of PAFEC, the Quality Process support group for Chemical Operations.**

### 'Smokeout'

## Puffers, chewers, dippers get chance to 'nix' nicotine

If ever DPMC personnel had a good chance to quit smoking, cease chewing or stop dipping various to-

bacco products for good, the next couple of months will provide it for them.

Not only is the Medical department offering the Methodist Hospital's stop smoking course through October (and will repeat it early next year), but they're solidly promoting Thursday, Nov. 17, which is the American Cancer Society's annual "Great American Smokeout" day.

According to **DENISE BACH**, DPMC Medical department nurse, the day of the Smokeout is one on which even the most unreconstructed puffer, chawer or dipper will be fair game for some good-natured cajoling by family, friends and co-workers to give up

### Rules for submitting classified ads

This is a reminder to readers about the rules for submitting classified advertisements for free publication in the *Shellegram*:

- Ads are published for Complex employees, retirees and families only. The advertiser must be the owner and not an agent or dealer.
- All ads must be submitted in writing, stating item for sale or lease, advertiser's name and home telephone number. Forms are available at reception desks in most administration buildings and from the Community Relations office in North Admin/239-A.
- Deadline for submitting ads is the first Tuesday of the month.
- Mail ads to the *Shellegram* at North Admin/221 or bring them to Community Relations, North Admin/239-A.

See "Smokeout" on Page 2

# DPMC smokers can 'kick habit' for free

"Smokeout," Continued from Page 1

his or her addition to nicotine.

"That's right. Addiction," says Bach. "Smoking cigarettes, cigars and pipes; chewing tobacco and dipping snuff are all ways in which nicotine addicts satisfy their craving for this harmful drug. It may not be as dramatic — or as immediately harmful — as a narcotics addict using a syringe, but prolonged use of tobacco and tobacco products produces an addiction that researchers say is just as deep and difficult to kick as those that go with heroin or cocaine."

The American Cancer Society

## **Shellegram to document stop-smoking journey of two DPMC personnel**

As a testament to the effectiveness of the Methodist Hospital-developed stop smoking classes currently underway at the Complex, the *Shellegram* will present a chronicle of the journey toward freedom from nicotine of two to those who signed up for the course, which began Oct. 4 and ends Oct. 27.

The two entrants, chosen from the group of 30 DPMC personnel who registered for the course, are **LORRAINE CARPENTER**, Chemical Maintenance, and **LARRY BECK**, BPA Operations.

Both potential ex-smokers were asked to keep a daily diary on their progress through the course, and to jot down both the good — and bad — experiences involved in kicking the habit.

The story will appear in the November, 1988 issue of *Shellegram*.

reports that the risk of developing lung cancer is 10 times greater for smokers than for nonsmokers, Bach observes, and those who smoke two or more packs a day are 15 to 25 times more likely to die of lung cancer.

"That's why we're calling attention to the hazards of smoking and the use of other tobacco products," she says. "We really care about our friends and fellow employees."

The stop smoking course at DPMC, already underway and attended twice weekly through October by 30 persons, is offered to Complex personnel free of charge, even though individuals who sign up at Methodist Hospital must pay up to \$500 apiece.

In early 1989, the course will be repeated for additional personnel who sign up beforehand, Bach says. Details about the second class will be announced in January.

"This is a highly successful course, and we believe it will result in a high percentage of ex-smokers at the Complex" Bach says, adding that additional course-offerings will depend upon the interest shown during the first two.

"We will announce exact details on the second run-through, probably in January," she notes.

But while stop smoking courses result in a high degree of success, the American Cancer Society's "Smokeout" day focuses national attention on the most common nicotine-producing habit, cigarette smoking. And on November 17, it may be difficult for a person working at DPMC to light up, bite off a chew or slip a dip between cheek and gum — without at least a little upbeat ribbing from those closest to them, Bach says.

"It's not really 'ribbing'," she says. "We prefer to call it 'supportive attention'. We simply hope to encourage people to make a solid commitment to put off tobacco use for a full, 24-hour day. All of us non-smokers — and that includes a lot of ex-smokers — will be there to encourage anyone who puts tobacco down. When somebody is



*"The stop smoking course at DPMC... is offered to Complex personnel free of charge"*

serious enough about quitting to refrain from tobacco for 24 hours, they deserve as much help and understanding as we can give them."

According to information from the American Cancer Society, a survey of smokers indicated they believe that cigarette-smoking helps relieve stress, boredom, hunger and other problems. Medical studies, however, show that smoking does none of these. If anything, smoking increases them.

On Smokeout day, says Bach, people can come by the Medical building in the morning and pick up "Survival Kits" to help them through. Each kit contains gum, candy, a nail file and other items to help keep abstainers busy when the urge to use tobacco hits them. The kits will be on hand at both cafeterias during the day, as well.

According to Bach, last year's Smokeout set an all-time record for participation. More than 19.5 million of the nation's 50 million smokers tried to kick the habit for the day.

In addition to the fact that lung cancer accounts for almost 28 per-

## Smokers' benzene levels 1000% higher

Smokers display significantly elevated breath levels of benzene, styrene, ethylbenzene, xylenes and octane, among some 20 volatile organics, according to a recent article by **WAYNE AUSTIN**, staff industrial hygienist in *Safespots*, the DPMC health and safety newsletter.

According to Austin, the findings were made in a recent study by the Environmental Protection Agency on the influence of personal

exposure and breath concentrations measured in 200 smokers and 322 non-smokers in New Jersey and California.

"Significant increases in breath concentration with the number of cigarettes smoked were noted for the first four aromatic compounds (benzene, styrene, ethylbenzene and xylenes)," writes Austin. "Based on direct measurements of benzene in mainstream cigarette smoke, it is

calculated that a typical smoker inhales 2 mg. of benzene daily (equivalent to 30 ppb. for a 24-hour period or 60 ppb. for an 8-hour work-day), compared to 0.2 mg./day for the non-smoker."

From these findings, writes Austin, it appears that cigarette smoking may be the most important source of exposure to benzene for the estimated 50 million American smokers.

cent of all cancer deaths in this country, making it the single largest contributor to the total cancer death rate, says Bach, some additional general facts on smoking and its effects on health include:

- Lung cancer is largely a preventable disease. It is estimated that 83 percent of lung cancer cases could be avoided if individuals never took up smoking.

- Lung cancer is the Number One cause of cancer death among both men and women. An estimated 93,000 men and 46,000 women will die of lung cancer in 1988.

- What's more, a total of 152,000 persons will develop lung cancer in 1988.

- More than 320,000 Americans will die prematurely in 1988 of diseases linked to smoking. That's as many Americans as have been killed in all the wars fought in this century.

- All forms of tobacco use, including cigars, pipes and smokeless tobacco, put the user at increased risk for cancer of any part of the oral cavity, from lip and tongue to mouth and throat.

## SCORA NEWS

### Skating party slated Nov. 17

A SCORA skating party will be held at the Sportspace Skating Rink in Deer Park from 7-9 p.m. Nov. 17. Admission is free for SCORA members, and guests will be charged \$1.50. Bring the kids, says **DEBBIE LITTLE TAYLOR**. For information, contact Little Taylor at EXT 6212.

### Christmas Dance Reminder:

**RUSSELL ADAMS**, president of SCORA, reminds both members and non-members to circle Friday, Dec. 16 on their calendars to remind them of the annual SCORA Christmas Dance, which will be held at the S.P.J.S.T. Hall in Deer Park.

"**JERRY McDANIEL** is coordinator for the Dance, and he's planning a lot of fun activities," says Adams. "We're also looking for volunteers to help decorate the hall and assist in setting up. Interested members should call the SCORA Hot Line at EXT 6975."

### Local dealers offer Shell lube discounts

This year, Lubricants at DPMC is

celebrating 40 years of being in business, and has arranged with several local service stations to offer all Complex employees, upon presentation of their I.D. card, any of the wide array of Shell Lubricant products at cost plus a nominal handling charge.

According to SCORA President Russell Adams, members can buy the lubricant products by the case for substantial savings.

All grades of oil, grease, transmission fluid and antifreeze products are included in the offer, says Adams.

The following stations will honor the discount to DPMC employees (Once again, employees must present a valid identification card before the discount will be granted):

- Refinery Road Autocare; Highway 225 and Refinery Road
- John Merritt Shell Service; Highway 146 and Spencer Highway
- Steve Koumoulos Shell Service; Center Street and Spencer Highway.

According to Adams, these dealers offer additional discounts on Shell products and service.

## PAFEC celebrates Quality Awareness award

"PAFEC," Continued from Page 1

Performance.

The group singled out creation of

the Electronic PRF System, which goes into effect for the PAFEC member-support groups in November. This project was initiated from a PRF writ-

ten by **TOM FLUKER** and **MARY SMITH**.

According to records, PAFEC members had submitted 42 PRFs through Sept. 30, 1988.

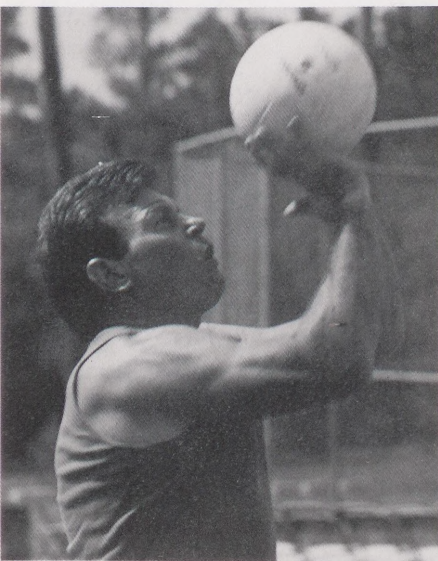
# SCORA picnic draws record 700-plus attendees



**JIM REPP**, retiree and Chief Cook, hefts a huge barbecued brisket from the grill of 'Mr. T', the official SCORA mobile barbecue pit. Our photographer ate it with sauce and onions.



Both grownups and kids enjoyed the antics of three clowns, complete with costumes and make-up. One of the clowns even did magic tricks and hand-fashioned balloon figures.



**JACK JOHNS**, Central Maintenance, sets up a team-member for the 'spike' in a volleyball game. Rumor has it that pro scouts were on hand to sign Jim up after the game. He hid.

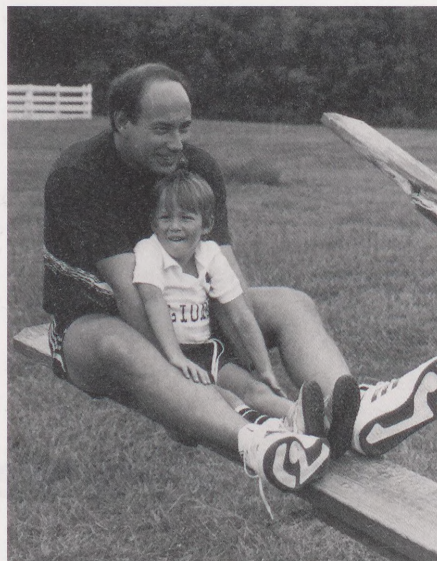
More than 700 DPMC employees, retirees and their families attended the annual SCORA Picnic Sept. 24 at Lenox Ranch, and according to **RUSSELL ADAMS**, president of the DPMC employee recreation organization, if anybody left the picnic with an empty stomach, it was purely their own fault.

"We had enough barbecue, hot dogs, free popcorn, beer and soft drinks and snow cones to easily handle 1,000 people," says Adams, "so if anybody had to break out a TV dinner when they got home, they spent too much time playing volleyball or swimming to take advantage of the food and beverages on hand."

But Adams isn't complaining. Hungry picnickers kept volunteer barbecue cooks busy all day, he says, and club member volunteer servers didn't have much time to leave the serving lines and beverage booths themselves to take part in the fun and games.

"Mr. T," the official SCORA mobile barbecue pit, was on hand, as was another pit loaned to the picnic by Logistics.

"We really appreciate Logistics letting us use their pit," says Adams. "We couldn't have done without it."



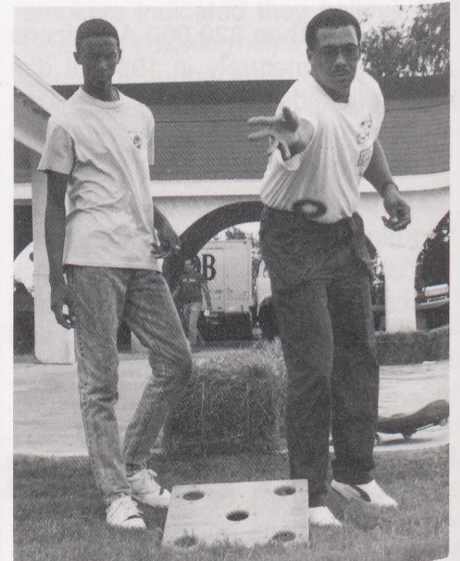
**Glen Athey**, husband of Employee Relations' **KATHY ATHEY**, gets son **Scott** to help weigh down his end of the seesaw. Contrary to rumors, Kathy was not on the other end.

The picnic, which ran from 11 a.m. to 7 p.m. at the 40-acre recreational facility off U.S. Highway 90 near Sheldon Reservoir, is generally well-attended each year, says Adams. This year, however, good weather and a growing interest among DPMC personnel in employee get-togethers combined to make the picnic a record-setting success.

"Besides having plenty to eat and drink, everyone took part in both organized and pick-up games, and the kids had a good time at the swimming pool, taking part in the washer toss, riding the three carnival rides, watching the antics of three clowns — one of them a magician — and joining in the haystack scramble, where a lot of quarters, dimes and nickels were scattered around a pile of hay and the kids all charged in at the same time."

For grownups and teens, a DeeJay was on hand with recorded music for both listening and dancing, and Bingo games resulted in cash for lucky winners.

"The last game involved a \$300 pot" says Adams. "And door prizes were awarded, including some nice posters and an inflatable NFL football, both donated by the Budweiser people."



**LRDS Operator EARL JACKSON** (r), and son **Shundrick** try the washer toss. Jackson says washers are harder to toss than horseshoes but, if dropped, much easier on the toes.

# Safety recognition drawing nets prizes for 25 more DPMC employees

The second round of drawings connected with the Complex's Safety Recognition Program was held Sept. 13 in the South Cafeteria, and once again 25 lucky full-time employees, whose names were drawn from the special ticket drum, were given the option of choosing one of the four prizes available, including a VCR, a 19-inch color television set, a microwave oven or a stationary aerobic exercise bicycle.

Individual safety awareness forms, on which the name of each winner was listed, were drawn from the ticket drum.

Those winners are:

**KENNETH LAWRENCE**, Central Maintenance; **JOHN L. DANIELS**, electrician, West Fuels; **'MO' MORELES**, Phenol Acetone; **GERRY HOOPER**, Fuels Maintenance; **EDWARD HINOJOSA**, Fuels, ATC; **JOHN KROLCZYK**, Tin Shop; **'COWBOY' FREGIA**, Resins Maintenance; **FERNANDO CHAVEZ**, Fuels Maintenance; **GREG HEACOCK**, Automotive; **MICHAEL ARCHIBALD**, North Lab; **DAVID BOATMAN**, Central Maintenance; **DARRELL KOEPKE**, Financial; **TONY MAGGIORE**, Control Systems, and **LLOYD KIRK**, Boiler Shop.

Also **DELORES MACKEY**, Distribution; **RONNIE LUSK**, Phenol Acetone; **MIKE HELM**, Project Engineering; **MIKE GILTON**, Environmental Engineering; **TERRY SIMS**, Engineering Support; **M.R. WILLIS**, Paint Shop; **BILL MUL-**



*The second round of the Complex's Safety Recognition Program drawings, held Sept. 13 in the South Cafeteria, resulted in another 25 lucky DPMC employees, each of whom get to choose prizes from among an array of useful items. On hand at the drawing were (l-r) DEBRA ELLIS, Chemical Operations, who drew names; JERRY GOLDEN, superintendent, Facilities Support, who spoke on safety; MIKE HELM, Project Engineering, a drawing winner; J.D. JOHNSON, superintendent, Chemical, and S.R. CLAYTON, Chemical Maintenance, who turned the drum.*

**LEN**, Instrument; **J.B. BABINEAUX**, Central Maintenance; **DAN JAEGER**, Engineering Fuels; **CHARLES TIMM**, G Dept., Chemicals, and **RHONDA JOHNSON**, Central Maintenance.

The drawing for September was scheduled to be held in the North Cafeteria on Oct. 12. Subsequent drawings scheduled for the remainder

of 1988 are to be held at noon on the following dates:

- Nov. 9 – South Cafeteria.
- Dec. 9 – North Cafeteria
- Jan. 11, 1989 – South Cafeteria.

Names of lucky monthly winners will be announced in the following month's issue of the *Shellegram*.

## COMING IN DECEMBER DPMC's ANNUAL CHRISTMAS FOOD DRIVE

### Tips for a scary - but safe - Halloween



Halloween evokes images of hobgoblins, witches, ghouls and vampires and other cleverly-disguised children who go trick-or-treating each year. But it also can bring images of danger if parents, motorists and homeowners do not take certain safety precautions, says the Texas Medical Association. Costumes, especially dark-colored ones, are difficult for motorists to see at night. Parents should include reflective tape or reflective liquid "paint" (available in hardware stores) on costumes and bags to improve a child's visibility. Make certain the costume is not so long that a child can trip on it, or so loose that it may catch on bushes and other obstacles. Cloth masks and entire head masks can block a child's vision or breathing. Instead, consider painting a mask on the child's face with cosmetics or grease paint. Parents should review safety rules with their children, including walking on sidewalks or staying to the side of the road, and not eating any candy or fruit they receive until it has been checked at home. Motorists must be especially attentive on Halloween. Slow down and drive with extra caution through residential areas. Homeowners can help out by having outside lights on as a sign of welcome and so trick-or-treaters do not trip over stairs or other obstacles. The TMA suggests following these easy guidelines to make Halloween much scarier — and safer — in 1988.

For Second-Quarter 1988

# Catalytic Cracking & Gas captures DPMC 'Rock of Reliability' award

Due to the high overall reliability levels maintained thus far this year in Fuels, particularly during the second quarter, picking the unit most deserving of Fuels' "Rock of Reliability" award for the period was a problem, to say the least.

However, because of its exceptionally reliable performance during the second quarter, the Catalytic Cracking & Gas department was chosen "best of the best" within Fuels, and received the award.

LARRY RILEY, supervisor of operations & maintenance, says that while Catalytic Cracking & Gas is one of the largest departments in Fuels — which could give it a "leg up" on the other departments in terms of visibility — it also has high visibility in terms of potential failure.

"You have to look at our history to understand how big an achievement this has been," says Riley. "About two years ago, both the Distillate Hydrotreater and the Normal Paraffin Recovery Unit were scheduled for permanent shutdown. When you're in that kind of mode, you expect priorities to go to other units. Then, however, the marketplace changed and this group had to really hustle, not only to make things work, but to work more reliably and efficiently."

Riley commends the work of the Mechanical Equipment organization at DPMC in helping keep Catalytic Cracking & Fuels on the leading edge in terms of reliable, peak operating levels.

"It was crucial that in order to keep running at maximum production levels, our pumps and compressors needed to operate at design capacities," he observes. "When a failure did occur, however, maintenance personnel were given the necessary time to repair those compressors and pumps completely by bringing them back to original design standards. It wasn't a matter of just putting band-aids on

things; we needed this equipment — which, in most cases, is old and subject to heavy use and frequent breakdowns — to function without failure."

JIM OVERMAN, field team manager, is the first to declare that without the other departments in Fuels having had "exceptional" reliability of operations during the second quarter, Catalytic Cracking & Gas would not have been able to operate at its peak levels.

"The second quarter typically signals the start of the gasoline production season," says Overman. "And this year, here has been a sustained high demand for detergent feedstocks production, as well. Couple both those demand factors with the second-quarter downtime experienced at Norco's Fuels and Olefins units unit due to the recent accident there, and the overall pressure of demand for gasoline, jet fuel and chemical feedstocks was particularly high. We all were asked to 'run hard', and while DPMC's Cat-Cracking & Gas department was singled-out, the award could just as well have gone to any one of the other departments in Fuels."

Nevertheless, Overman stressed the performance of operators, coupled with that of craftsmen and engineer/technical staff, as having gone a long way in providing Catalytic Cracking & Gas with the "right stuff" for which the recognition was earned.

"The squeeze was on," he notes, "but all 60 or so operators, craftsmen and support personnel assigned to Catalytic Cracking & Gas displayed a singleness of purpose in meeting the increased demand for products, while assuring the highest equipment reliability. It was an exceptional performance."

In gasoline production at DPMC, Overman cites high second-quarter reliability figures for the Cat Feed Hydrotreater as having had a direct effect on Catalytic Cracker production in both April and May, which averaged

more than 62,000 b/d of fresh feed.

"Before the Norco accident, we were running only about 50,000 b/d of Cat Cracker feed," he points out, "with the rated capacity of the unit at 65,000 b/d. At these increased feed rates, we were producing 35,000 b/d, which is nearly 1.5 million gallons of gasoline a day. Any way you look at it, that's responding to the needs of our customers."

What's more, he said, the Fuel Gas Treater and Sour Water Stripper units also functioned at peak efficiencies.

Furthermore, Overman notes that with Norco Fuels and Ethylene production curtailed, DPMC was handed the additional responsibility of providing Shell's Geismar Chemical Plant with increased levels of normal paraffin as feedstock for that plant's burgeoning detergent business.

"Our Normal Paraffin Recovery Unit had record production in the month of May, with an average of 2,045 barrels a day (b/d) of normal paraffin for the entire month. That is a noteworthy feat, since our annual average production last year was around 1,500 b/d and our earlier projected average for the second quarter was something like 1,800 b/d."

He says for the entire second quarter, the Normal Paraffin Recovery Unit typically ran at production rates ranging from 1,800 to 2,100 b/d without either scheduled or unscheduled shutdowns.

Nevertheless, he again points to the other DPMC Fuels units' performances as having a direct effect on production at Catalytic Cracking & Gas.

"If any one of the other units goes down, it immediately impacts Cat Cracker and Normal Paraffin Recovery Unit production," he stresses.

Riley agrees. He reserves par-

See "Cat Cracking" on Page 8

# M I L E S T O N E S

## SERVICE ANNIVERSARIES

### 20 YEARS

T.E. EDGE  
Control Systems

G. WILLIAMS JR.  
P&AS

### 15 YEARS

M.S. BELL  
Engrg. Svcs.

D.C. BROOKS  
Olefins Oprns.

J.N. CAMPBELL  
Fuels-DST

R.F. INGEBRETSON  
LPA Maintenance

W.L. MARTIN JR.  
FUELS-ALKY/  
THERM. CRKG.

C.A. MITCHELL  
Finance

R. NARANJO  
LPA Maintenance

R.A. PYLANT  
Control Systems

### 10 YEARS

W.R. ALFORD  
BPA

R.C. ALSTON  
East Maintenance

R.C. DE LA ROSA  
Chem. Oprns.-East

C.A. DUES  
Hydrocracking

F.J. DUMONT JR.  
Central Maintenance

E.E. ELLISON  
East Maintenance

K.B. HIGHT  
Hydrocracking

M.J. KASMIROSKI JR.  
Fuels-DST

B.J. KERN  
Medical

B.L. McCURRIN  
DPC-Lube Log.

J.B. MONCRIEF III  
Major Resins

A.P. MOTT JR.  
Catalytic Cracking

G.G. NOLEN  
Control Systems

L.G. OLIVER  
Hydrocracking

J.J. ROSS  
Fuels-Dispatch  
Oprns.

A.B. SMELLEY  
LPA-Maintenance

D.A. TURPIN  
Major Resins

J.D. VALADEZ  
East Maintenance

### DPMC WELCOMES

J.W. ADCOX  
Analyst-Log. Svcs.

R.E. BENNETT  
Operations

D.J. BRASHER  
Operations

C.T. BURNEY  
Operations

M.R. CAVE  
Operations

A. CHARLES JR.  
Operations

R.L. COOKE  
Operations

S.G. COOLEY  
Operations

L.L. DILL  
Operations

E.P. DUGAT  
Operations

J.E. HALL  
Operations

K.K. HARDEN  
Operations

W.E. KENNEDY II  
Operations

R.R. LANDRENEAU  
Operations

P.O. LESLIE  
Engrng-LPA

R.A. LuQUETTE  
Operations

K.A. MOORE  
Operations

M.T. OWENS  
Operations

R.J. PEARCE  
Operations

M.G. PEDNEAU  
Operations

H.D. PINKERTON  
Operations

M.A. RAUCH  
Operations

G.E. ROBERTSON  
Operations

R.T. RODRIGUEZ  
Operations

J.S. SAMPSON  
Operations

W.B. SMITH JR.  
Operations

G.R. VEAZEY  
Operations

R.M. WELDON  
Operations

R.G. WIESS JR.  
Operations

### RETIREMENTS

J.B. SMITH  
ECH/IPA & Derivatives

## Provident, Employee Stock Ownership Funds show activity

The Supervisory Board and the Board of Management of Royal Dutch Petroleum Co. will propose to shareholders a two-for-one stock split of the existing shares of the company.

According to *Funds Valuation*, the newsletter circulated to shareholders in any of the various Provident, Pay Deferral Investment or Employee Stock Ownership funds, if approved, the split of stock shares would go into

effect on Jan. 18, 1989.

Also, it was further announced that the average cost per share of Royal Dutch Petroleum Co. ordinary shares distributed to the accounts of members of the Provident Stock Fund during the period Sept. 1-15 was \$109.17.

In other Shell Funds news, members of the Employee Stock Ownership Fund who received a cash distri-

bution of their accounts by the Aug. 31 deadline received about \$107.69 per share.

On Sept. 15, Royal Dutch Petroleum declared a semi-annual dividend of \$2.41 per share (after 15 percent Netherlands withholding taxes) payable Oct. 18 to shareholders of record Sept. 26. According to the newsletter, this dividend was reinvested and allocated to members' accounts.

# Fuels department 'solid as a rock'

"Cat Cracking," Continued from Page 6

ticular praise for the performance of operating personnel for helping to put the decision for the award in favor of Catalytic Cracking & Gas.

"The operators identified potential problems much earlier than before, and headed them off," he says. "They have begun to evolve into a 'pro-active' mode, rather than a reactive one."

He says another key factor is improved communications between operations and maintenance. "Our maintenance effectiveness has improved significantly," he adds.

Riley says many of the basic tenets of the Quality Improvement Process are being used by operators to do jobs correctly the first time, and to identify and eliminate root causes of problems.

"Now, we're entering into the furnace oil season, so reliability, particularly with the Distillate Hydrotreater, is still very important," Riley observes. "And with Norco's Cat Cracker down for an undetermined period of time; the Cat Cracking & Gas department still needs to operate at peak efficiencies."

## IN MEMORIAM

D. W. DIAL, pipefitter, who retired Oct. 31, 1964, died Sept. 13, 1988.

But as far as winning "The Rock" award is concerned, Overman says the personnel in Catalytic Cracking & Gas remain proud of their accomplishments. Framed, color photographs of the award are being hung in each of the department's four control rooms.

"This," he points out, "will remind everyone involved that the award was the result of a true team effort."

## CLASSIFIEDS

**FOR SALE:** Two-story, 3-2-2 house; excellent condition, new A/C, new carpets, new paints; Lomax near schools. Call R.J. Kondas, EXT 6701.

\*\*\*

**FOR SALE:** Two burial plots in Grandview Memorial Cemetery; \$675 each. Call David Maners, 473-7854.

\*\*\*

**FOR RENT:** 3-1 house; 1-1/2-car garage and central air and heat; near Southmore Hospital; \$375/month plus utilities and a one-time \$200 deposit. Call W.C. Cowey, 473-2170.

\*\*\*

**THANKS TO ALL MY FRIENDS** for my retirement coffee and cake bash. It was truly super! Your gifts were splendid, as was the cherished scroll. Each one of you, my fellow workers, has a special place in my memory. We're in Brookside, TX, near Pearland. Our door is always open to you all.

D.W. HAWES

\*\*\*

**MY THANKS TO EVERYONE** for the nice retirement party, plaque, cash gift and the many years of friendship.

MARVIN R. ADAMS

## DPMC employee's son cited at Academy

Cadet Ronald P. Garrett, son of **BOBBY GARRETT**, ER Training, and Mrs. Garrett, has been placed on the Commandant's List for military excellence at the United States Air Force Academy at Colorado Springs, CO.

Cadet Garrett, a senior at the Academy, is a graduate of Ross Sterling High School.

To be named to the list, cadets must have a 3.0 or greater military performance average at the end of the fall or spring semester, according to Academy spokesmen. Cadets who receive this distinction wear a silver wreath on their uniforms.



**Cadet Ronald Garrett, son of DPMC's Bobby Garrett.**

## Shellegram

**Deer Park Manufacturing Complex**  
Published monthly by Shell's Deer Park Manufacturing Complex for its employees and pensioners. All written inquiries should be addressed to SHELEGRAM, Shell Oil Company, P.O. Box 100, Deer Park, Texas 77536. Contact: Room 221, N/Adm. Bldg. DPMC EXT.: 6372. Houston Office: 627-9933.

**F. Jay Schempf**  
Editor

BULK RATE  
U.S. POSTAGE  
PAID  
PERMIT #1  
HOUSTON, TX