

SHELLEGRAPH

HOUSTON
REFINERY



No. 13

Thursday, March 26, 1970

ETHYLENE PLANT START-UP OPERATIONS BEGIN WITH TESTING OF THREE LARGE BOILERS

Shell Chemical recently began start-up operations on the first major piece of equipment in the new ethylene facility.

The facility's three large boilers are undergoing tests prior to being placed in operation later this month. The boilers will generate steam for use at Shell's chemical plant and refinery. The steam will eventually be used to drive a network of pumps and compressors in the plant as well as being used for process operations when the facility is fully operational later this year.

Construction of the facility began in the fall of 1967 and represents the most significant addition to the chemical plant, Shell's largest, since it was built in 1942. When completed, the facility will produce 1.2 billion pounds of ethylene a year, approximately 10 per cent of the total production in the United States, and several other olefin products.

SCALE MODEL DISPLAYED AT TOWN PLAZA

Residents of the Deer Park community were able to see a scale model of a portion of the new Ethylene Plant, March 19-21 during "Meet Your Neighbors Days" at the Town Plaza shopping center.

"Meet Your Neighbors Days" is a program sponsored by the shopping center management to acquaint local residents with the business and industrial community of Deer Park. Participating firms are invited to set up displays in the mall area of the center.

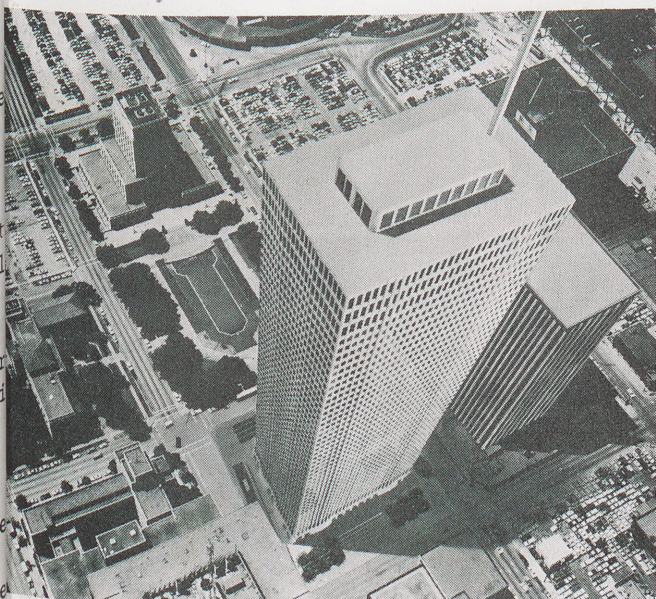
The model was of one of the plant's large fractionating columns which is easily visible from Highway 225. The actual column is about 150 feet tall, 26 feet in diameter and weighs 500 tons. In addition to the model, interested shoppers were provided with a special pamphlet describing the new facility.

DEER PARK VOLUNTEER FIRE DEPARTMENT RECEIVES \$9,600 FROM SHELL REFINERY AND CHEMICAL PLANT

Shell's Chemical Plant and Refinery recently donated \$9,600 to the Deer Park Volunteer Fire Department for use in building a recreation hall for the firemen.

W. R. Durland, Chemical Plant Superintendent, Petrochemicals Division, attended the monthly business meeting of the department, March 16, and presented a check on behalf of the Chemical Plant and Refinery. Durland said that Shell recognizes the out-

(Continued on Page 3.)



MODEL OF ONE SHELL PLAZA looms over neighboring buildings. The structure reached to the 44th floor within recent weeks.

FIRST CONTINGENT OF GENERAL OFFICES-HOUSTON EMPLOYEES TO MOVE INTO ONE SHELL PLAZA IN JULY

Moving time for your Shell counterparts who are bound for One Shell Plaza will begin in July. While workmen are completing the rest of the 50-story building, floors five through 28 are to be occupied by some employees who will make up the General Offices-Houston organization.

In this manner, Shell employees will begin moving into the South's tallest skyscraper between July 15 and September. These early movers will make up half of the total Shell employees to be housed in the finished building in 1971.

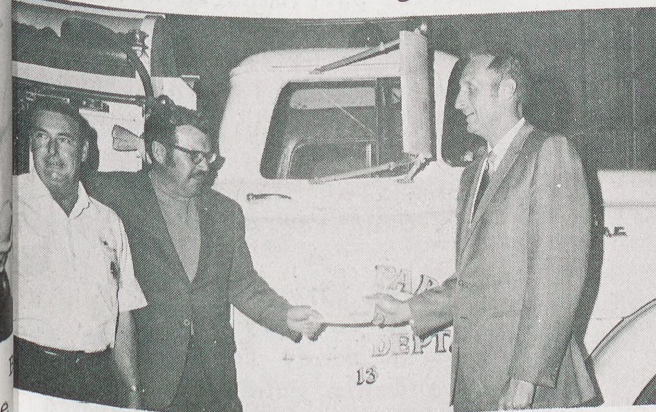
The first move of Shell employees will utilize 23½ floors and 500,000 square feet of floor space.

One Shell Plaza has already begun to dominate the Houston skyline as it continues to grow. Outside construction work on the towering structure reached to the 44th floor within recent weeks.

The building has been sealed at the 20th floor level and work has begun on installing partitions and other office finishing work starts at the fifth level. Later, the building will be resealed at the 34th level as interior finishing work moves upward, when completed One Shell Plaza will have a total gross square footage of 1.6 million.

Most of the parking facilities in Two Shell Plaza, 29-level structure being erected.

(Continued on Page 3.)



Presenting check for \$9,600 from Shell is W. R. Durland, Plant Superintendent, Petrochemicals Division, right, to members of the Deer Park Volunteer Fire Department.

SHELL WIVES AND DAUGHTERS COOK UP INTERNATIONAL DISHES TO ASSIST JULIETTE LOW FUND



Cooking foreign dishes for sale was an experience for Nancy Meier, dressed in oriental costume, and Mrs. Bonnie Stewart, Troop Leader. In center is Patty Holub, at right are Lisa Keener, Cathy Taylor and their Troop Leader, Mrs. Lambert, selling punch.

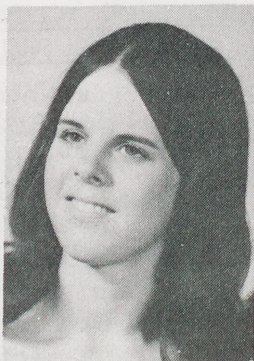


One troop, above, Mrs. James Carew, Theresa Coffelt and Jean Carew, sold fortune cookies, another sold hawaiian delicacies and demonstrated traditional dances, below.



DEBORAH LAIRD HONORED AT UNIVERSITY OF HOUSTON

Deborah Ruth Laird, a freshman in the Honors Program at the University of Houston, was recently accepted in Alpha Lambda Delta, national freshmen women's honor society. She is also an inactive member of Gamma Sigma Sigma service sorority and is a Little Sister of Delta Upsilon fraternity. The daughter of Mr. and Mrs. J. E. Laird, she is majoring in math under a valedictorian scholarship.



Selling Czech kolaches were Julie Rogers and Mrs. Paul Rogers.



Representing Holland were Mrs. Greta Atson, a native of Holland, Lori Pesl and Mrs. Robert Pesl.

Shell wives and daughters took part in the International Tasting Fair held Saturday in Pasadena by the Jackson neighborhood Girl Scouts.

Jean Carew and Mrs. James Carew (he works at Shell Chemical) participated as did Lori Pesl, Mrs. Robert Pesl, Shell Chemical, Patty Holub, daughter of Andrew Holub, Engineering Field, Nancy Meier, daughter of Mrs. Louise Meier, Tech; Julie Rogers and Mrs. Paul Rogers, Res.; Tana Bishop, daughter of Charles Bishop, Docks; Cathy Taylor, daughter of R. L. Taylor, CCU.

Each Girl Scout troop prepared a dish from a different country and sold the food cooking to raise money for the Juliette Low World Friendship Fund which provides for Girl Scouts from all over the world exchange visits.

The girls even presented native dances from the different countries to entertain customers.

CAROL LANE SPEAKS BEFORE DEER PARK ROTARY
GIVING MOTORING TIPS FROM HER PUBLICATIONS

Miss Carol Lane, Shell's noted authority on vacation travel spoke to members of the Deer Park Rotary Club and their wives on March 18.

The travel expert discussed how to put fun and imagination in a vacation, and demonstrated how a two-week wardrobe could be packed into a suitcase that weighed only 14 pounds fully packed. The title of her speech was "It's What's Inside that Counts."

Author of Travel Brochures

She has written several brochures on camping and outdoor cooking, traveling with children and pets, packing for the trip and planning a practical vacation wardrobe. Her latest brochure is directed to women drivers. Called, "What's a Nice Girl Like You Doing Under the Hood of Your Car" or "Please Lady, I'd Rather Do It Myself," the booklet gives basic tips a woman should know about her car not only in emergencies but also for everyday maintenance.

The booklet will be available shortly in the Shellegraph office. It can be ordered by writing Miss Carol Lane, Shell Oil Company, 1008 West Sixth Street, Los Angeles, California 90054.

Travels 70,000 Miles a Year

Miss Lane travels over 70,000 miles each year lecturing to clubs and finding new ideas for family outings in her position as Shell's woman's travel director. She talked before Chemical and Refinery wives in a special program in March 1969.

Quite an outdoorswoman, Miss Lane's experiences include camping in Utah's Canyonlands National Park and along the California gold rush trail. She has hiked the Black Hills of South Dakota and recently spent a week canoeing through the white-water rapids of the Connecticut River.

ONE SHELL PLAZA--

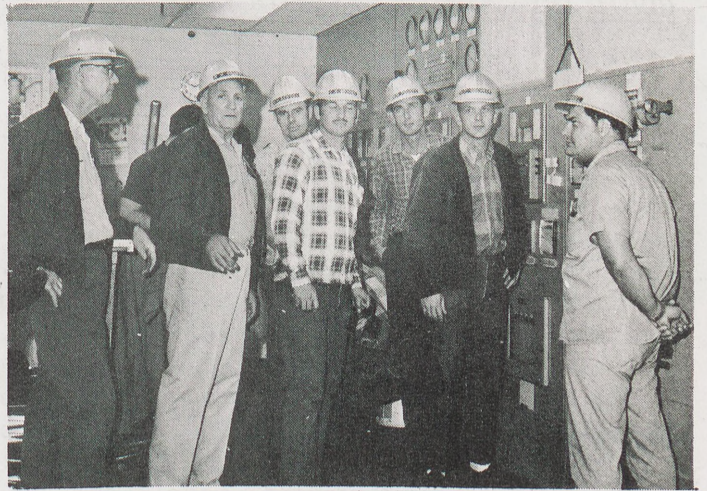
(Continued from Page 1.)

...ted diagonally across Louisiana street from One Shell Plaza, is scheduled for operation the end of the summer.

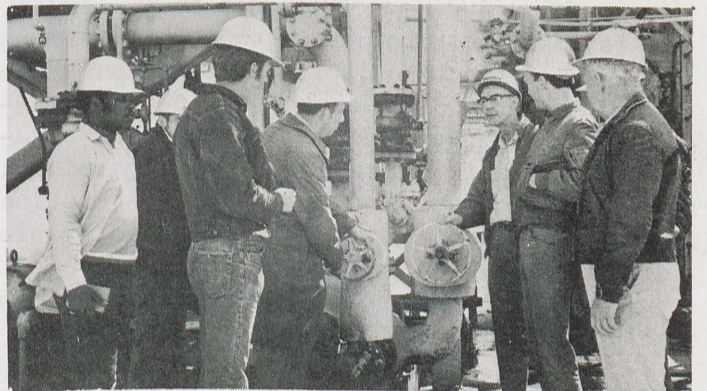
The lower floors of that structure will be used for parking, possibly as many as 12 levels. Construction work will continue on the upper floors of Two Shell Plaza while the completed lower floors are utilized for parking. Work is expected to be completed on an underground tunnel connecting the two buildings by September.

Those New York organizations to be located in One and Two Shell Plaza will be known as "General Offices-Houston" and will include manufacturing, Transportation and Supplies, and Marketing, Employee Relations, Purchasing and General Services elements of Financial, Legal and Public Relations. Other Shell occupants will be Industrial Chemicals, Petrochemicals, and Polymers Divisions of Shell Chemical, the Southwestern E&P Region, Houston Division, Shell Pipe Line Corporation, and Houston Transportation and Supplies Offices.

15 EMPLOYEES TRAINED TO FILL OPERATING JOBS...



T. J. DAVIS AND R. H. GRASSE, far left, familiarize new Dubbs 9 employees with control room as part of training. In group are M. H. Benton, C. A. Wright, B. G. Flurry, B. F. Cochran and J. L. McDaniel.



Learning the different parts of the unit are J. A. Batiste, C. Nelson, C. E. Dunn, B. G. Lain, and R. S. Leach with instructors T. J. Davis, second from right, and R. H. Grasse, far right.



Trainees learning to read instruments are D. E. Grace, J. T. Clarkson, M. H. Benton, B. F. Cochran and J. L. McDaniel.

DEER PARK VOLUNTEER FIREMEN RECEIVE MONEY--
(Continued from Page 1.)

standing work done by the department. He added that Shell also realizes that the efforts of the department saves the community and taxpayers, Shell being the city's largest taxpayer, a lot of money.

The recreation hall will be built behind Fire Station No. 2 on L Street on land donated by the City of Deer Park. Total cost of the structure is estimated at between \$18,000 and \$20,000.

Shell has interests in the fire department other than as an industrial citizen and a taxpayer, however, since a considerable percentage of the firemen are Shell employees with long years of service.

NEW SHELL FILM EXPLAINS CONVERSION OF CRUDE
GIVING INTRODUCTION TO CHEMISTRY OF REFINING

A new Shell film takes the mystery out of refining.

"Refining Processes" is a basic introduction to the chemistry of refining crude oil into petroleum products.

The 16-mm, 20-minute color film is recommended for school and general audiences. It is available to groups on request from the Shell Film Library, 450 N. Meridan St., Indianapolis, Ind. 46204

The new Shell film catalog, which lists 19 other films available on free loan, says the following about "Refinery Processes":

"Using laboratory equipment, models and animation, the film demonstrates in easily understood terms the fundamental workings of a modern oil refinery.

"Crude oil is a complex mixture of hydrocarbon compounds. Since they boil and subsequently condense at different temperatures, it is possible to separate them into various groups, or fractions, by distillation. From these fractions, some are selected for further refining by catalytic cracking or catalytic reforming into high octane gasoline. The role of catalysts in a chemical reaction and their importance to oil refining are dramatically illustrated."

A portion of the film was photographed at the Norco Refinery.

ELIZABETH ANN SHIELDS NAMED TO UT HONOR ROLL

Elizabeth Ann Shields, daughter of Mr. and Mrs. W. H. Shields (Engineering Field), was named to the honor roll at the University of Texas College of Education.

Elizabeth Ann was named a Cum Laude honor student on the roll which included 169 students.

A minimum of 55 grade points accumulated for the semester qualifies a student for the honor roll. Total points are calculated by multiplying the number of semester hours undertaken by the value of each grade.

Elizabeth Ann is a sophomore majoring in special education.



CLASSIFIEDS

FOR SALE

Used air conditioner, also used 22-inch rotary lawnmower.

Telephone: 472-6382

4 lots on Trinity River Plaza, 1 block River.

Telephone: 446-2885

Custom built gun cabinet, 6 gun cabinet with sliding glass doors, locks on doors and drawer, \$85. Must be seen to appreciate.

Telephone: 473-8479 after 5 weekdays anytime on weekends

French Provincial, drop leaf dining table and 4 chairs, fruitwood; also table Excellent condition, \$100.

Telephone: MO 4-1510

Several guns open on deer and turkey in Bandera County.

Telephone: 473-1821

1968 RCA black & white TV, \$100.

Telephone: 946-8606

Set of 14 inch E-T aluminum mag wheels G-M car, like new \$85.

Telephone: 471-4355

5-year-old gelding sorrel, gentle enough for kids, \$150.

Telephone: 675-7612

Income Tax service.

Telephone: 941-0090

WANT TO BUY

Gas welding equipment including refill oxygen and acetylene cylinders.

Telephone: GL 3-7741

FOR SALE OR TRADE

16-foot trailer house, fully equipped, once, want \$1600 or will trade for property in Freeport, Galveston or surrounding area, or gardening land out of city.

Telephone: Ox 4-5171



ASKING FOR SHELL FLEA COLLARS are Lee Simons' sophisticated poodle and pensioner Iva G. Loomis' pets, Prince and Poochie.