

CAVITY AT THE CAT. CRACKER...but it means big things for the Distilling Department. The hole (arrow upper left) was made when the original Cat. Cracker fractionator was idled by revisions in 1964. The 115-foot tall column was cut into 11 sections and moved to the Distilling Department (shown right above) to await revisions now taking shape south of Distilling No. 1. In due course the vessel will be reassembled and lengthened - making it the tallest column on the Refinery's west property.

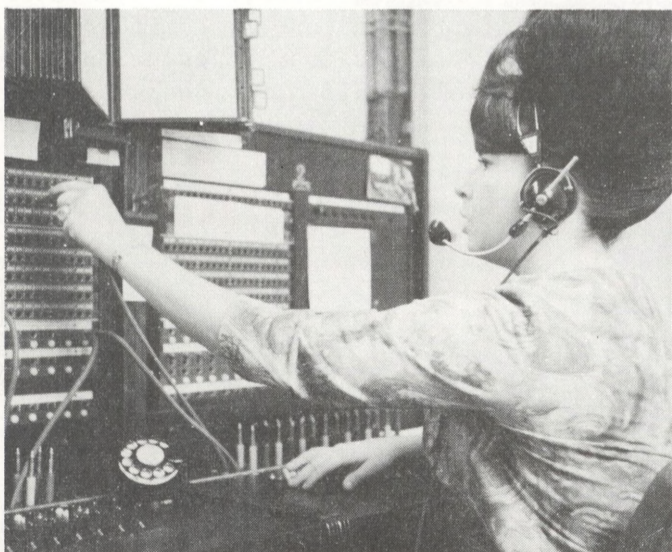
DISTILLING NO. 1 HARDWARE APPEARING ON THE SKYLINE AS MODERNIZATION MOVES AHEAD

New structures rising behind the Main Office and Cafeteria in the Distilling Department mark the progress of the modernization program at Distilling No. 1.

Revisions to the primary system at Distilling No. 1 were completed in 1961, and consisted of (1) control house modernizations, (2) the installation of a new primary fractionating column, and (3) the construction of a new vertical furnace.

The present modernization is represented by the replacement of the secondary system at Distilling No. 1. Basically, these revisions include (1) two new furnaces, the larger of which will be of the dual service type, (2) four new stripper columns, and (3) a 154-foot tall secondary (Cont'd. on page 3)

REFINERY PEOPLE IN ACTION



GOOD MORNING...Shell Refinery. Try saying that cheerfully a couple of hundred times to get the feel of Switchboard Operator Melba Newby's job. Then add to that the long distance calls, the wrong numbers, and the grouches - and you've come a long way toward appreciating what goes on in the PBX (Private Business Exchange) Room.

SHELLEGRAPH



HOUSTON
REFINERY



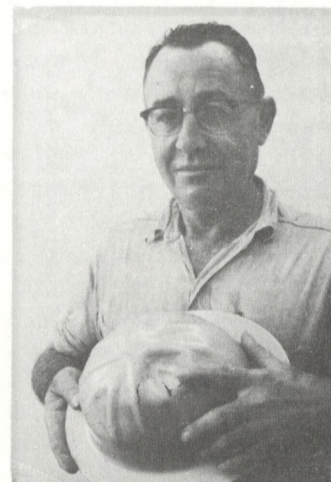
No. 197

Friday, August 12, 1966

HARD NOSED ABOUT WEARING HIS HARD HAT
F. J. SVOBODA PROVES HIS POINT

"This dent could have been in my head", says F. J. Svoboda, General Helper No. 1, "if I wasn't a stickler for wearing a hard hat."

Working out in the open on a 4" dropout line near the river water reservoir seemed a safe enough place to go bareheaded, but Svoboda "wasn't going to take any chances." Not only did he keep his own hard hat on, but cautioned a co-worker to do likewise. It was good advice, because a few moments later a piece of 4" pipe swung free and struck Svoboda - denting his hat as shown here.



Dented heads, on the other hand, can only be prevented with a little foresight - so when in doubt, take Svoboda's advice and wear your hard hat.

Once again, incidents such as these point up to the fact that safety consciousness can mean the difference between an unfortunate incident and a serious injury...how long does it take to put on a hard hat?

"PAPA" NUT GETS A RETIREMENT SURPRISE FROM HIS OLD BUDDIES AT THE CAT. CRACKER

Like Aggies, Cat. Cracker veterans never get it out of their blood. Even though W. L. Nutt, who retired as an Operator No. 1 in the Thermal Cracking Department on August 1, has been gone from the Cat. Cracker for a few years, his more than 15 years' service there weren't forgotten. His former co-workers wished him well by presenting him with a Stetson all tied up in a special dollar-bill bow. Pictured here at the gathering in the Cat. Cracker Control Room are A. Mason, J. E. Laird, D. A. Hampton, W. P. Polson, J. B. Booty, R. W. Vanston, "Papa", and J. D. Kuebler. Still to come is "Papa" Nutt's regular retirement party set for next week.



NORCO REFINERY AND VENTURA COUNTY OPERATIONS OBSERVE 50-YEAR ANNIVERSARIES

Fiftieth anniversaries were marked at Norco, Louisiana, and Ventura, California, on the same day in June. It was June 12, 1916, that Shell operations began in Louisiana at the Norco Refinery, and coincidentally, negotiations were completed for the Company's first Ventura County land purchase.

In 1916, the New Orleans Refining Company, a predecessor Shell company, bought 366.2 acres of plantation land 24 miles above New Orleans. It was to be the site first of a terminal and later of a 5,000-barrel-a-day topping plant that has been

transformed into a 170,000-barrel-a-day refinery.

At Ventura, oil seeps led Shell to buy land in what was predominantly farm country -- until then. Shell today is represented in the county by the Pacific Coast Area Coastal Production Division, the Ventura Exploration District, Ventura Land District, Ventura Gas Plant, two pipelines of the West Coast Pipe Lines Department, and many Shell service stations and marketing facilities. Shell Chemical operates the Ventura Chemical plant.

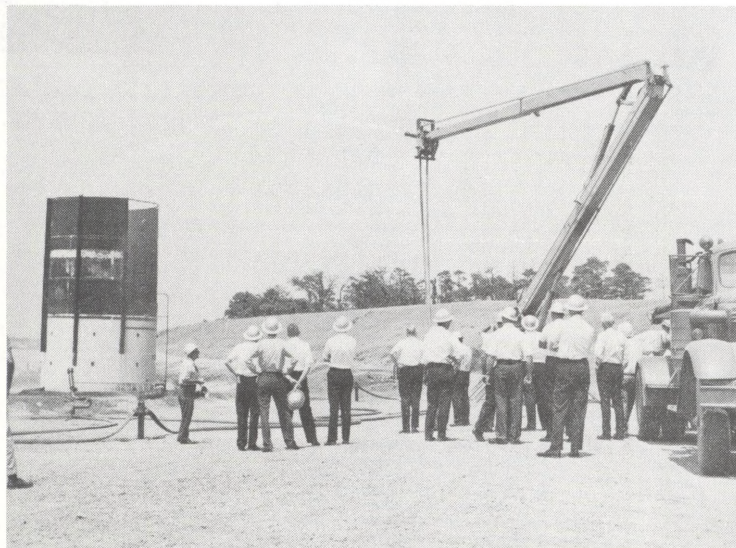
UP-TO-THE-MINUTE REFINERY FIRE FIGHTING EQUIPMENT NOW HAS ITS OWN HOME-MADE "SNORKEL"

Modern city fire departments boasting of remotely-controlled hose nozzles mounted on large crane-like booms have nothing on the refinery as shown in the pictures below. Attached to the end of a 60' aerial platform boom, and soaking its target, is a special nozzle attachment designed by the Fire and Safety Department.

Patterned after its city counterpart, the combination foam and water nozzle is easily attached to the business end of an aerial platform in a matter of minutes. The stream pattern adjustment is made by a nozzle con-

trol lever operated here by J. C. Hart, Operator No. 1, Lube C, as C. Agnew, Pumper-Gauger, Dispatching, looks on. Once the hoses are hooked up, the direction of the stream can be controlled from the ground.

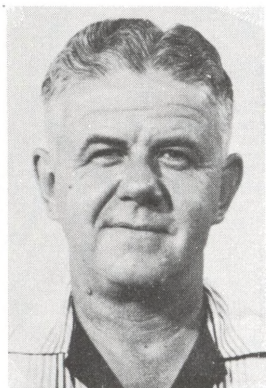
By design, this equipment is not an essential part of the "first-wave" of emergency fire-fighting defense. It is used as a second-line, or backup, system for fires calling for water or foam which can be more effectively applied from heights and distances attainable with the new boom nozzle.





TAKE A GUESS - What percentage of adult Americans have never ventured more than 200 miles from home? Did you say 52 per cent? That's the tidbit for the week and one of the reasons for the "Discover America Best by Car" theme being used by the oil industry to urge Americans to visit and enjoy the scenic, recreational, and historic sites that abound in this country. Emphasis, naturally, is on the suggestion that the family auto provides the best and most rewarding way to see the country today. Can you argue?

ARE YOU LOOKING - for a different vacation? Then walk about 100 miles through the mountains! PETE WILPITZ, Research Pilot Plant Foreman, took 12 boys in his Explorer Post on a 12-day trek through Camp Philmont in the high country near Cimarron City, New Mexico - and says he "may go again...sometime."



The 56 actual mile hike - which doesn't include other necessary

walking - and unnecessary walking after making a wrong turn - took the group through Indian artifact country, deep woods, and rugged mountain trails - all at altitudes above 6,800'. The food was all dehydrated - down to maple syrup and meat. Although two pack mules carried their share, the hikers made the 56 miles with full back packs. In relating this part of the trip Pete says he found a lot of things he started out with that "fell by the wayside." If, by now, you still think the hikers had it easy - keep in mind that bears presented a constant threat and required that all food be hung in plastic bags about 10' off the ground. Two Shellsons JERRY and JOE TAYLOR, whose dad is LEO TAYLOR, Research Laboratory Technician, also made the hike. What did Pete do when he got back home? He took his family to Colorado...in the car.

PROVIDENT FUND NEWS

Here are the latest Provident Fund valuations:

Equities Fund:

July 1, 1966 - \$1.676
July 19, 1966 - 1.692

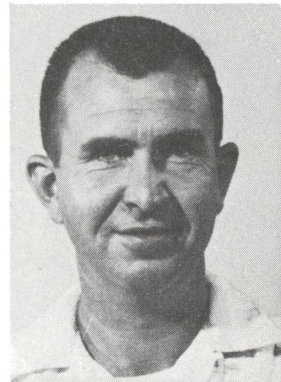
Shell Stock Fund:

July, 1966 - \$61.975

JIM FERRY AROMATICS DEPARTMENT OPERATIONS FOREMAN TO BE PROMOTED TO RES. ASSISTANT

Refinery Manager Leonard T. Wilson has announced the promotion of James W. Ferry to Research Assistant effective September 1.

Currently an Operations Foreman in the Aromatics Department, Jim was born in San Antonio. He attended school in Pennsylvania prior to entry into the Air Force, where he served as an officer for four years during World War II. Prior to joining Shell here in the Research Laboratory in 1947, he attended the Missouri School of Mines and Metallurgy. In 1949 he was promoted to Laboratory Technician and in 1963 to his present position as Operations Foreman in the Aromatics Department.



Polio is still a menace - 17 of the 19 cases reported in Texas were children. Consult your doctor about booster shots.

DISTILLING MODERNIZATION (Cont'd from p.1)

fractionator column mentioned in the cutline on page 1.

With these revisions completed, the Distilling Department will be producing a sharply fractionated kerosene cut to be used as the feedstock for the mol (molecular) sieve plant now under construction adjacent to the cat. feed hydrotreater on the east property.

The mol sieve plant will produce normal paraffins which will be sent by barge to Shell Chemical's new Geismar, La. plant as raw material for the manufacture of biodegradable detergents. These are the detergents which clean your clothes but do not leave foam on streams flowing from sewage disposal plants.

WELCOME



J. Henry Blunt
Engineer
Technological

Don W. Patterson
Engineer
Engr. Services

SHELL FOSSIL COLLECTION PRESENTED TO SMITHSONIAN WILL GIVE SCIENTISTS SOMETHING TO WORK WITH



D. E. Davis, Houston E & P Exploration Department, is shown examining one of the species in the "working" collection of fossils recently presented to the Smithsonian Institution in Washington, D.C. This extensive Mississippian fossil collection was presented by Shell Development Company's Exploration and Production Research Division.

Collected by Shell geologists in central and western Montana, North and South Dakota, the macro-organisms range from a quarter of an inch to about three inches (cross section) in size. These sea animals lived in the waters which covered most of the United States 350 million years ago in the Mississippian geological time period.

Gathered primarily from out-cropping rock formations, the thousands of specimen in Shell's collection aided in oil exploration by enabling scientists to make time stratigraphic correlations. In one sense, fossils are landmarks to environmental conditions existing in early geologic time.

Unlike many collections at the Smithsonian, Shell's will be a "working" collection. Smithsonian scientists, as well as those from universities and other institutions, can actually work with and handle the fossils while studying the species.

CLASSIFIEDS

FOR SALE

17" Motorola, Maple Console TV. Rexair Vacuum Cleaner and Power Lawnmower.
Telephone - GR-3-0707

One de luxe automobile luggage carrier, heavy vinyl, zipper side loading with lock. Folds easily for compact storage. One standard size Ping-pong table, heavy duty for hard and long-lasting wear and tear. One 23" black and white Zenith TV, Consolette, Early American styling, solid maple cabinetry. Plays fair but does need some minor repairs -- mostly small tubes.
Telephone - MI-4-2538 - 1 p.m.-9 a.m. daily

1953 6 cylinder Ford 2-Dr. Standard shift with overdrive. Dependable.
\$100.00
Telephone - GR-9-2536

Two wheel utility trailer about 4 X 8 with canvas cover. 15" wheels and spare. Good shape.
\$100.00
Telephone - GR-9-1338

1961 Chevrolet 1/2 Ton Pickup. Radio, heater, stepside.
\$650.00
Telephone - HI-7-5704

1 Ton Friedrich - Just overhauled, new fan motor - \$85 or 1 Ton Vornado, excellent condition - \$60 -- Take your choice.
Telephone - HU-6-0729

One acre land - fenced with shed near new Deer Park Football Stadium.
Telephone - GR-3-1274

FOR SALE

Three bedroom house, 1 bath, central air and heat, close to schools and shopping center. 821 Grove, Deer Park. Will re-finance or sell equity.
Telephone - GR-9-3654

1963 Chevrolet, 2-Dr. Hardtop Impala. 283 cu. in. V/8, factory air, power steering, tinted glass, padded dash. 35,000 miles. One owner - like new - see to appreciate.
Telephone - MI-5-2829

1965 Chevrolet Impala V/8 - 4-Dr. Hardtop, loaded, 17,000 miles.
\$2600.00
Telephone - GR-9-2886

1965 Chevrolet BelAir V/8 - 4-Dr., loaded, 19,000 miles.
\$2205.00
Telephone - GR-9-2886

Two rose-beige, all wool carpets with pads; one 12 X 22 - good condition - \$75, and one 12 X 10 - excellent condition - \$50. One twin bed with springs and mattress - book-case headboard - \$40. Three pair floor-length draw drapes, unlined, beige - \$10 a pair. Telephone - GR-9-3505

WANTED

21" rotary lawnmower case with 7" wheels.
Telephone - GR-2-5988