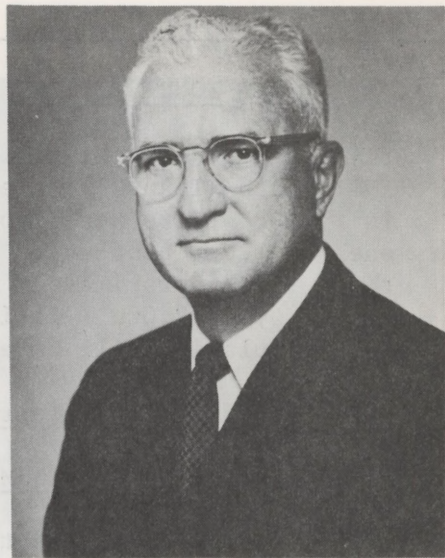




D. B. KEMBALL-COOK



R. M. HART



R. N. DUNCAN

RECENT SENIOR MANAGEMENT CHANGES
ANNOUNCED BY SHELL'S PRESIDENT

R. C. McCurdy, President of Shell Oil Company, has announced that D. B. Kemball-Cook, Executive Vice President in charge of Manufacturing, Transportation and Supplies, and Marketing, has been elected to the newly created position of Executive Vice President and Chief Operating Officer.

The senior officer in charge of each of the following operating and supporting organizations will report to Mr. Kemball-Cook: Exploration and Production; Manufacturing, Transportation and Supplies, and Marketing; Shell Chemical Company; Shell Development Company; Personnel and Industrial Relations; and Purchasing.

The following organizations will continue to report to the President: Financial, General Counsel and Public Relations. Mr. Kemball-Cook will continue to act as Mr. McCurdy's deputy.

R. M. Hart, Vice President Transportation and Supplies, has been elected Executive Vice President, Manufacturing, Transportation and Supplies, and Marketing to succeed Mr. Kemball-Cook in his prior assignment.

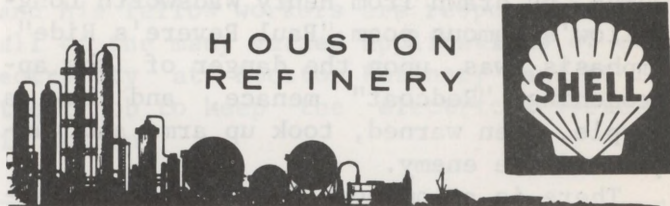
R. N. Duncan, General Manager Supply Relations, Transportation and Supplies, has been appointed General Manager in charge of Transportation and Supplies, and will report to Mr. Hart.

(Continued on Page 2 - See CHANGES)

PROVIDENT FUND NEWS

March Shell stock purchase price through subscription was \$50 per share. Cash available from Company contributions, cash dividends and sale of rights not exercised at 70¢ per right permitted the Fiduciary to subscribe to shares with approximately 53% of total rights received. Equity Fund Unit Value on March 5, 1968, was \$1.803, and on March 20, 1968, was \$1.835.

SHELLEGRAPH



HOUSTON
REFINERY



No. 285

Friday, April 19, 1968

LENNIE GOLDSTEIN TRANSFERS TO HEAD OFFICE
ASSUMES NY TECHNOLOGICAL POSITION



L. A. GOLDSTEIN

L. A. Goldstein, Manager Technological, will be transferred to Head Office Manufacturing Technological as Assistant Department Manager effective June 1, 1968, announced Refinery Manager Leonard T. Wilson.

Lennie, who holds a B.S. degree in chemistry from Tulane University and a B.S. degree in chemical engineering from the University of Texas, joined Shell at the Houston Refinery as a Technologist in July 1955. After a variety of technical assignments in the Technological, Gas, Aromatics, and Catalytic Cracking Departments, he was transferred to Head Office Manufacturing Technological in September 1961. He went on foreign assignment to The Hague in July 1964 and upon his return in July 1965, he was appointed Manager Technological at the Anacortes Refinery. He returned to the Houston Refinery in June 1967 where he was appointed to his present position as Manager Technological.

TOURIST TALK

TEXAS VISITOR POTENTIAL IS INCREASING! When Texas became a Republic in 1836, there were approximately one billion people on earth. Now there are approximately 3½ billion. In the year 2,000, it is estimated the population will have doubled to 7 billion.

(Published by Texas Tourist Council)

SPREAD THE ALARM

"One if by land, and two if by sea;
And I on the opposite shore will be,
Ready to ride and spread the alarm
Through every middlesex vil-
lage and farm."

Everyone recognizes these immortal words as drawn from Henry Wadsworth Longfellow's famous poem "Paul Revere's Ride". Emphasis was upon the danger of the approaching "Redcoat" menace, and how a people, when warned, took up arms and vanquished the enemy.

There is an ominous foe, "Traffic Hazard", which is building a formidable potentiality for serious injury in our Refinery. Our forces have been lulled into complacency by his subtle approach. The mounting numbers of vehicles should dictate an extra effort by each of us to cope with the situation. There should be a closer observance of traffic safety rules, and more caution exercised, but a seeming apathy, coupled with a false sense of security, has given rise to a boldness which defies logic. These are some observations from the "Old North Tower" of Safety:

1. Speeding is on the increase.
2. Stop signs, as such, are being ignored. The sign really means one should stop instead of slowing down and then resuming speed.
3. Double parking is quite common, particularly around zone shops.
4. Parking too close to walkways blinds oncoming vehicles to pedestrian traffic. The pedestrian has right of way too.
5. Right of way at intersections is not always observed.
6. Always keep horns, wipers, lights, and brakes in good repair.
7. Most departmental scooters used to convey personnel are overloaded.

"One if by land, and two if by sea;"

Now, friend! This is my warning to Thee.

--I. C. White

Sr. Fire & Safety Inspector



SHIRLEY
A.
CASSEDAY
Clerk
P&IR



ANDREA
WALKER
Typist
Treasury

CHANGES - Continued from Page 1

Denis Kemball-Cook joined Shell in 1931 and for the next 12 years worked in exploration and production activities in St. Louis and Houston. He accepted employment with Compania Shell de Venezuela in 1945 becoming a Director of that company in 1950. In 1957 he moved to New York to become a Director and Vice President of Shell Caribbean Petroleum Company and Asiatic Petroleum Corporation. He became an Executive Vice President of Shell Oil in 1958.

Bob Hart joined Shell as an Attorney in Tulsa in 1950. He moved to Head Office in 1952 and became a General Attorney in 1959. He served on a special assignment in the Midland E&P Area in 1961 and was appointed Treasurer of Shell Oil in 1962. The following year he moved to Shell Chemical as General Manager, Industrial Chemicals Division. He returned to Shell Oil in 1966 as General Manager, Transportation and Supplies, and was elected to his present position in 1967.

Ron Duncan joined Shell in 1927 as Clerk at the former East Chicago Refinery. He moved to St. Louis in 1935 and to New York in 1940 as Head Supply Clerk. He was named Manager, Supplies Department, in 1946; Manager, Transportation and Supplies in 1952; and to his present position in 1958.

SHELLEGRAPH

Published by Shell Oil Company for its Houston Refinery and Houston Research employees at Deer Park, Texas, 77536.

P. H. FISCHER---Editor

Reprints allowed only by request. To submit news and photographs, call extension 541 or send material to Room 103, Old P & IR Building.



REWARDS FOR BEING SAFE---C. M. Knight, left, and F. D. Dunham, who both work for the Purchasing group, admire two of the prizes to be given away in conjunction with the Safety Shoe Month in May. During May, employees who purchase a pair of safety shoes will receive a chance to win a radio, portable auto light, fire extinguisher, or one of several other prizes. Some of the choices of safety shoes available are illustrated below. Another benefit of purchasing a pair (or more) of safety shoes in May is that you may pay for them through the payroll deduction method.

REFINERY PEOPLE IN ACTION



ELECTRICIAN AT WORK---R. M. Weatherly, one of the Engineering Field's Electricians, is shown doing just one phase of work he does at the Refinery. Here he cleans and checks the armature of a large motor. He and his fellow workers are responsible for all of the many varied applications of electricity at Houston Refinery and it is their job to keep the electrical systems in action.

**H319 ... Sagebrush Leatherguard
Pigskin Casual Moc-Oxford**

Sagebrush Leatherguard treated pigskin moc-oxford; cemented black Neoprene; Nitro Crepe Saf-Tred sole and heel; Supervisor last.



**H210 ... Tufgum Sole & Heel,
Spanish Moss Upper Leather**

Spanish Moss green leather oxford; Tufgum Resist-Oil sole and heel; Cushioned Arch pad; Dacron stitched; Director last.



**H332 ... Popular Executive Black
Oxford in DuPont Corfam**

Hy-Bright black Corfam moc-oxford; Hy-Flok Resist-Oil sole and Resist-Oil heel; full leather lining; Cushioned Arch pad; Supervisor last.



DU PONT CORFAM®

**H938 ... Hayride Brown Chukka,
Nitro Crepe Sole and Heel**

Brown brushed and smooth water-repellent leather Chukka shoe; cemented black Neoprene Nitro Crepe Saf-Tred sole and heel; Cushion insole; Supervisor last.



**H342 ... Plain Toe Oxford
in Cordo Color Corfam**

Cordo color Corfam plain toe oxford; oak leather Butyl-treated sole; Neoprene heel; storm welt; Cushioned Arch pad; Supervisor last.



DU PONT CORFAM®

**H341 ... Cordo Color Corfam Exec-
utive Wing Tip, Cushioned Arch Pad**

Hy-Bright Cordo color Corfam long wing tip oxford; oak leather Butyl-treated sole; Neoprene heel; full leather lining; Cushioned Arch pad; storm welt; Supervisor last.



DU PONT CORFAM®

CLASSIFIEDS

NOTICE - FORMER TREATING EMPLOYEES

A Treating Department Old Timers' Party is planned as follows:

Time: 6:00 p.m., April 25, 1968

Place: Billie's Restaurant
1429 South Richey
Pasadena, Texas

Who: Ex-Treating Department employees and friends are invited.

If you plan to attend, please contact Henry Boggs - 94-6-2873 or Bailey Gunn - 94-6-7235 before April 23.

SHELL OIL AND FIVE OTHERS FORMED
NEW PRODUCTS PIPELINE TO SUPPLY MIDWEST

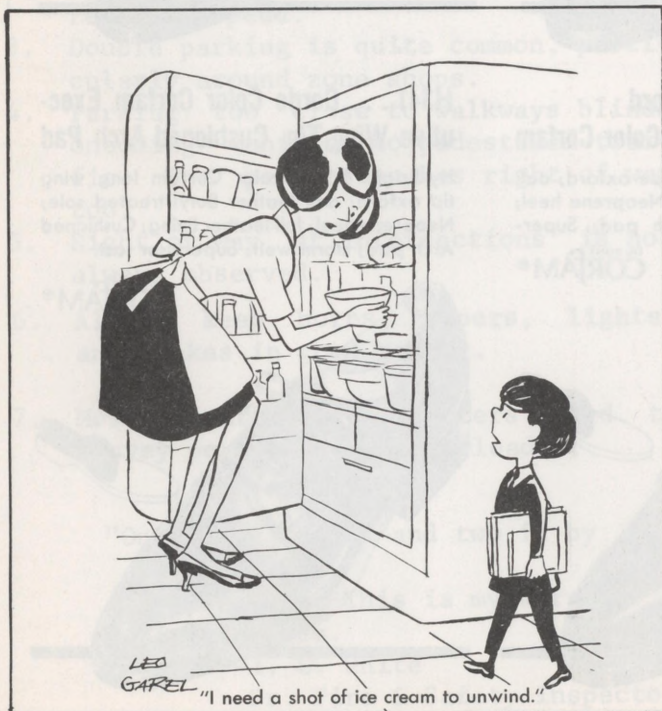
R. N. Duncan, General Manager Transportation and Supplies, announces that Shell and five other oil companies have formed the Explorer Pipe Line Company to construct a large-diameter products pipeline from the Gulf Coast to the Mid-Continent area. The project will help Shell keep pace with increased product demand anticipated in the Midwest.

Plans call for the 1,200-mile pipeline to run from Lake Charles, Port Arthur and Houston on the Gulf Coast to Tulsa, St. Louis and Chicago. At Tulsa, the line will connect to the Williams Bros. pipeline to supply the northern Midwest area.

Shell's initial percentage of participation in the Explorer Pipe Line Company will be 16.41 percent. The new pipeline, expected to be completed by the end of 1970, will be among the three largest products pipelines in the United States.

FOR RENT

Boat and utility storage - Located at 2715 Beverly in Golden Acres. Reasonable.
Telephone - GR-2-3032



FOR SALE

1958 Pontiac 4-Door Hardtop. Loaded Extra clean.
\$350.00

Telephone - MI-5-5333

Used push-type 20" rotary mower.
\$10.00

Telephone - GR-9-2357

1952 Chevrolet. Good solid work car.
\$150.00

Telephone - GR-3-1274

1 Cleveland Alto Sax.

Very good condition.

Telephone - HU-6-2770

Weekend Cottage, modern, air-conditioned. Completely furnished, including stove and refrigerator. Large lot, nice lawn with large shade trees. City water. Located 9 miles from Anahuac at Oak Island, near Trinity Bay. Sacrifice for \$2,300.00.
Telephone - GR-9-2273

Corner lot at Champion's South. Off FM196 and near golf course. Wooded.

Priced right to sell.

Telephone - PA-9-0483

House with two lots - Two bedrooms, air conditioned and carpeted throughout. Aluminum siding. 2911 Dalton, Park Place.
Telephone for appointment - NE-3-3505

Toy male poodle. Black, six weeks old. AKC registered.

\$75.00

Telephone - GR-2-6382 after 5 p.m. weekdays.

Norge Refrigerator - across top freezer. Good running condition.

\$45.00

Telephone - MI-5-1155

1½-ton Friedrich Air-Conditioner. Good condition.

\$225.00

Telephone - MI-5-1155

2-ton York Air-Conditioner. Still in service. \$40.00.

Telephone - MI-5-1155

1963 Falcon Ranchero - Radio, heater, automatic transmission.

Telephone - HU-5-2690

1962 Comet body parts - Transmission, rear end, air-conditioner, motor parts.

Telephone - HU-5-2690

LOST

Man's Masonic ring at East Parking Lot.

Telephone - GR-2-0656

WANTED

Used file cabinet - standard size.

Telephone - 473-5603