

*Let the light of peace shine.
May you, too, reflect the light.*



Employees Share Christmas Plans

Several employees were asked what they would be doing over Christmas and their responses varied from working to playing Santa for the children of others.

There wasn't a moment's hesitation when Training's Jo Raburn was asked what she was going to be doing over Christmas. "I'm going home to Louisiana and let Mom do the cooking!"

The Raburns enjoy going to Louisiana as often as they can since Hodge's parents, as well as Jo's, live there; and, they want their four-year-old daughter, Tracey, to be with her grandparents as often as possible.

Hodge is also a Shell employee, who worked in Process Control-Electrical prior to his being transferred downtown.

If, over the next few days, you should hear a husky Ho! Ho! Ho! coming from Reproduction, think nothing of it. It's Annetta Cintron practicing her Christmas Day role as Santa for the children at the Bayshore Child Development

Center in Baytown.

Although this is Annetta's first attempt at playing the role of the jovial St. Nick, she's well on her way to success with seven little - and not so little - ones to practice on during the evenings and her co-workers during the day. In the meantime, the traditional Santa costume, complete with pillows for filler, hangs in her closet awaiting her premier performance on Christmas Day when the costume will come alive with the ever warm and loving Annetta, who enjoys children and finds many ways to express that joy.

There's never any question how machinist Ronnie Hill's family will spend the Christmas holidays. "It's off to grandmother's house we go."

All twenty-three members of the family converge Christmas Eve at Grandmother Alexander's home in Spring in plenty of time to share the evening meal together and get in lots of visiting. Then around ten o'clock, the children are reluctantly tucked into



It's Louisiana, here I come! for Jo.

bed, so Santa can come; and, the adults can visit some more while putting everything in order for Christmas morning.

"We always honor the great grandparents by giving them their gifts first, then come the grandparents, then the kids," says Ronnie with anticipation clearly reflected in the telling.

"I've reserved a table at the El Chico Restaurant on Main for my family and some of our friends from church," says painter O. T. Hester, who picked El Chico because it features Freddie Noble on the piano playing music that brings back fond memories of bygone days at the Coconut Grove for Hester and his friends. "Gifts will go to the sloppiest dressed one, the least likely to succeed one and others equally worthy.

"Come Christmas Eve the wife will fix a big meal for the kids, and we'll exchange gifts. Then, I'll recuperate for a day before leaving town for our place in the country."

Then, there's H. A. Wigley, an operator in Distilling, who will spend this Christmas the same place he spends

Continued on page 4

Letter From The Editor

After six years and over three hundred issues of the *Shellegram*, I'm leaving it to an as yet unnamed editor.

It goes without saying that I will miss the weekly challenge of putting together the *Shellegram*. Most of all, though, I will miss the many close relationships which have developed as a result of that challenge; but, it's time for a change. So, with much anticipation, I look forward to my new job in Employment as an interviewer, confident that you will take the new editor under your wing and offer him or her the same generous support you have always shown me.

Thank you.

Dotti West

Next *Shellegram* On Jan. 3

The *Shellegram* will not be issued on December 27. The next issue is scheduled for January 3.

If you have any news items or story ideas for the new editor, please put them in writing and mail to the *Shellegram* office. Be sure to include your name and work extension, so that he or she will be able to get in touch with you for more information.

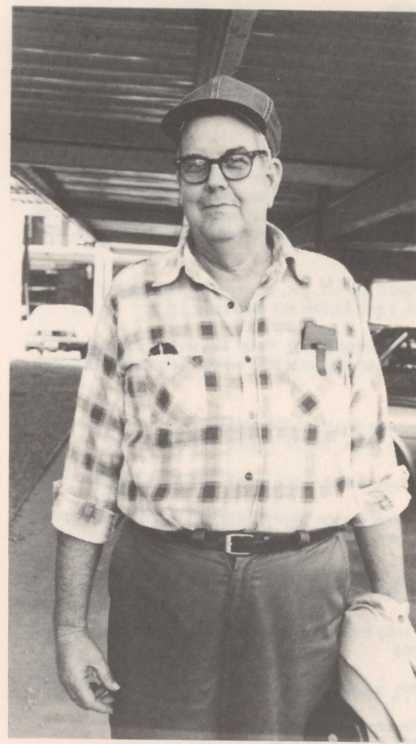


Annetta will play Santa's role.

On Christmas Day,
these employees
will be in a
variety of situations.



To Ron, Christmas means honoring one's elders.



For Wigley, it's just another work day.



Hester plans to recuperate.

Grandchildren and Christmas go hand in hand for Sgt. Morrison.



Classifieds

FOR SALE

76" Spanish couch. \$75. Fireplace screen, black. \$15. 3rd seat for Suburban, tan color. \$50. Set of golf clubs and cart. \$25. 14' Flying Junior sailboat with Cox trailer. \$600. Penney's power lawnmower. \$40. 15 gallon aquarium, heater, filter, air pump. \$20. 474-4767

1977 GMC Sprint, air, power, tilt, cruise, air shocks, 350 V8, 2 bbl. \$3,295. 487-1086 after 2 p.m.

Four 13" wheels. \$60. Four 13" wire hub caps. \$175. Everest-Jenning electric wheelchair. \$300. 472-2230

1976 Honda Civic CVCC stationwagon, air, AM-FM, Michelin tires, motor needs work. 476-6125

125cc T.M. Suzuki 1973, good condition. \$300. 472-8795

Farberware open hearth electric broiler with rotisserie, new condition. \$35. 471-5365

200'x196' lot on golf course at Rayburn Country, No. 263 in Sect. 7, Lake Sam Rayburn. 721-2996

Bush Hog mower, 5' pull type, good condition. \$600. 339-1903

Custom crocheting, your pattern or mine. 944-2823

1975 Granada, auto, air, P-S-B, 42,000 miles. \$2,100. 476-4085 after 4:30 p.m.

1974 1/2 Datsun 260Z, 64,000 miles, new paint, mags, shade kit, AM-FM cassette, 4-speed, 25 mpg, excellent condition. \$4,700. 479-6764

1976 Ford Explorer F-150, 48,000 miles, air, auto, P-S-B, radials. \$3,400. 479-6957

Water softener-conditioner, 32,000 grain, uses block salt. 40-channel CB with aerial. \$45. 479-0116

Moped, good shape. \$175. 479-1772

Maple secretary. \$25. Beige upholstered chair, wing back. \$75. Blue traditional chair. \$75. 472-6101

1963 Cadillac Sedan Deville, all power, cruise, magic eye, controlled differential, new tires, good condition. 472-6101

1975 Moto Guzzi, 850T, custom seat and handle bars, low mileage, new battery and tires. \$1,250. 1979 Plymouth Volare stationwagon, air, P-S-B, excellent condition. 487-3420

FOR LEASE

3-2-2 house, large yard, fireplace, wet bar, sunken living room, garage door opener, microwave oven. 479-7925

3-2 fenced in Forest Bend, near schools, shopping center and park. 334-2009 after 5 p.m.

WANTED

Anyone who may have seen accident involving 1966 blue Chevy at 50th Anniversary celebration parking lot between 3-5 p.m. 476-4542

LOST

Pair of prescription sunglasses in black case. 487-7059

FOUND

Single key on 50th Anniversary ring. Claim in room 151 of refinery administration building.

PERSONAL

I wish to thank all my friends and fellow workers at Shell for the wonderful retirement party and the nice gifts I received. I would also like to express my gratitude and appreciation for the many wonderful years and memories which I have experienced with all of you. I will never forget them and all of you.

- Virgil A. Reichardt

Sharing Christmas

Continued from page 1

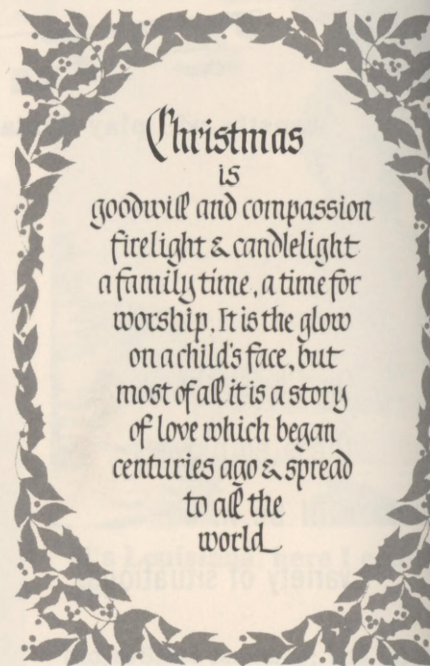
every Christmas that falls during his shift: at work.

"It's going to be real exciting working Christmas Day," says Wigley with a grin. "Next year will be different though. I've already scheduled part of my vacation to include Christmas week, so I can share it with my grandbaby, who will be 15 months old then. Just the right age to love Christmas!"

"I'll be on long change that weekend," says Sgt. J. D. Morrison," so I won't have to come back to work until Wednesday on evenings."

And, having Grandpa home for Christmas will be one of the nicer gifts for April, six, and Shane, five, children of the Morrisons' only child, a daughter who lives in Dallas.

The kids really get the gifts, says Morrison, as their other grandpa owns a gift shop in Deer Park.



Correction

The address provided for Harvey J. Rasco's wife, Irene, was incorrect. It should have been 10806 Corona in Houston.

Shellegram

Deer Park Manufacturing Complex

Published weekly by Shell's Deer Park Manufacturing Complex for its employees and pensioners. All inquiries should be addressed to **Shellegram**, Shell Oil Company, P. O. 100, Deer Park, Texas 77536.

Dotti West - Editor