

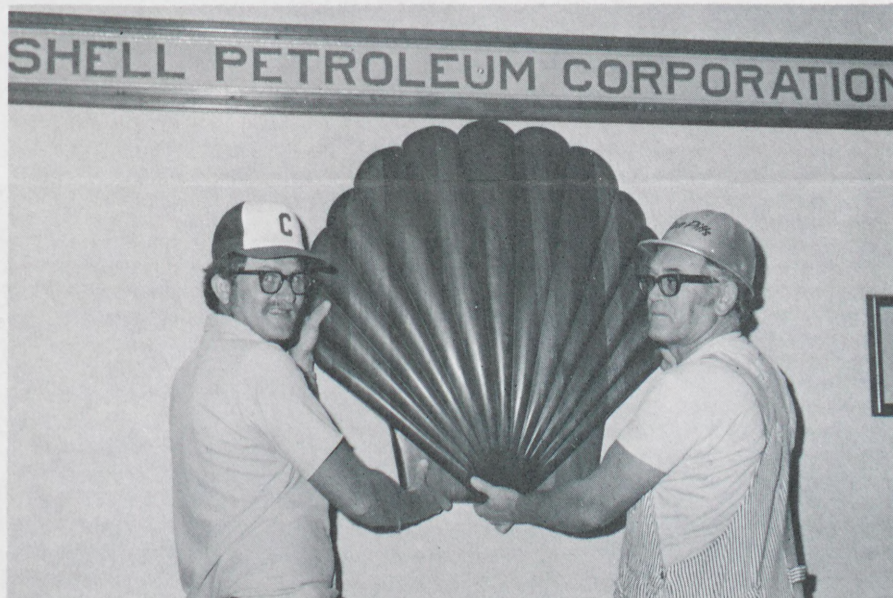
Shellegram

DeerPark Manufacturing Complex

Thursday, July 9, 1981

Vol. 46, No. 28

Boiler House relic is a sign of the times . . .



Donnie Hall, left, and Dan Pitts, both carpenters, Maintenance North (left photo), were busy a couple of weeks ago placing the familiar wooden Pecten in the lobby of the North Administration Building under a new fixture—a vintage Shell Petroleum Corporation sign.

The Pecten was made in 1956 by Fat Boy Rife, who has since retired from the North Carpentry Shop. But the sign which is constructed totally of cast iron, is a lot older than the 25-year-old Pecten. It was one of five placed on massive boilers in the old Refinery Boiler House when the Refinery began operating in 1929. The boiler house is shown below as it appeared in the 1940s.

The sign was retrieved from the boiler house when that facility was shut down in 1973. But its current shiny look hides the fact that it is over 50 years old. That look was a gift from the many North craftsmen, who sand-blasted and repainted the sign.

And that sign will soon be one of the few things left to remind us of the boiler house because that structure is scheduled to be dismantled in the near future. If any employees or retirees have any memories or old photos of the boiler house they would like to share, we sure would appreciate it.

. . . the present

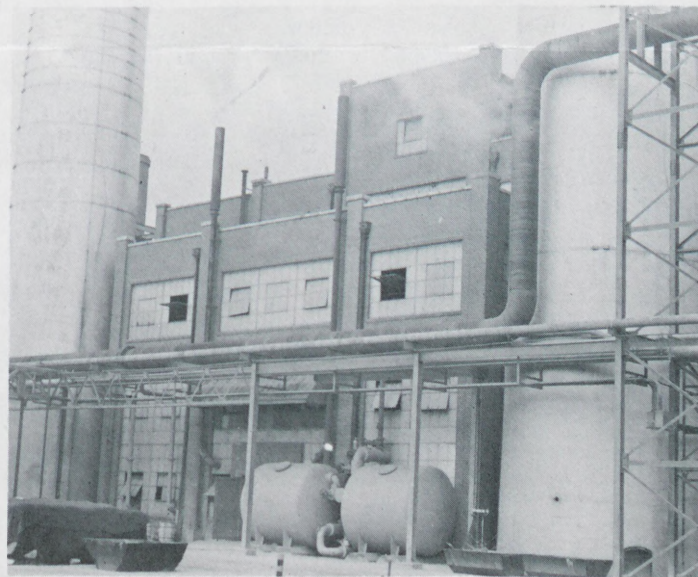
Helpful safety hints are on their way to your home

Keep your eyes on your mail at home because you will soon be receiving three billfold-sized cards which illustrate safety procedures you can use anywhere.

One card demonstrates the correct procedure for applying the Heimlich maneuver to save a person from choking, while another shows the way to use cardiopulmonary resuscitation (CPR) to aid heart attack victims. A third demonstrates how to lift and carry objects without hurting your back.

The cards are not designed to take the place of first aid training in administering the Heimlich maneuver or CPR. But they are being issued to help Complex employees deal with emergencies. The card dealing with lifting is designed to remind you how to lift correctly because it is a common part of everyday life.

Cards are being mailed to all employees' homes as part of a summer safety program, "Excellence is our goal—safety begins with me."



. . . and the past

Classifieds

FOR SALE

1974 Ranger pickup. Good condition. 1977 Honda Automatic with fairing. Will take \$1,200 each or will trade for furniture for living room and bedroom or boat motor and trailer. Call 997-1004.

1973 Pontiac LeMans Sport. Air, automatic transmission, AM-FM, power brakes and steering. 1976 Mach II Mustang. AM-FM, four-speed, air, power brakes and steering. Call 453-2329.

1972 Toyota. Four-door, automatic, 1,600 cc. \$500. Call 481-3977.

1979 Mustang Cobra. Turbo-charged, AM-FM stereo, Michelin radials, custom wheels, air, four-speed, bucket seats, quartz clock, four cylinders, 15,000 miles. Call 943-1187 after 5 p.m. and ask for Sonny.

1972 Olds six-passenger station wagon. Air, power brakes and steering, low actual miles. Everything works. Good work car. \$500 cash. Call 479-3519 after 4:30 p.m.

1971 MGB. New convertible top, FM tape deck. Fair condition, runs good, gets about 28 miles per gallon in town. Call 479-8391 after 4:30 p.m.

1969 four-door Impala. Antique dressing table (three-way mirrors). Pacer Mat exerciser. Prices negotiable. Call 946-4051.

Heavy-duty overhead track rack for long-wheel-base pickup. Good condition. \$100. Call 383-3053.

Phelps 25-foot gooseneck trailer. Stake float tri-axle, 6,000-pound axles, new brakes, good eight-ply tires, H-D

ramps, registered for 8,000 pounds. \$3,000. Call 487-4430 after 5 p.m.

Four HR 78 X 15 Kelly Pacemark steel-belted radial whitewall tires. Ran about 20,000 miles, never had a flat. \$60. Call 455-7393.

1980 Yamaha 850 Special. Like new. Only 7,100 miles. \$2,475. Call 444-2005.

1980 Kawasaki LTD-1000. 3,400 miles. \$3,100. Call 480-2475.

1973 Honda 500. \$500. Call 476-5814.

Twenty-foot "Flying Dutchman" sailboat. \$500. Call 668-1324, Area Code 713, after 5 p.m.

Nineteen-foot glass, deep-V boat. 150 HP, tandem galvanized trailer. \$1,600. Call 471-5029.

East Texas variety store. Ideal for retired couple, established business for 55 years. Middle 20s. Two-story colonial home. About 4,800 square feet, five bedrooms, 2½ baths, huge game room, near churches, stores and post office. Good condition. East Texas-Alto. \$47,000. Call 713-858-4734 or 713-858-3256.

Mid Lake Village. Lot 75 X 155, across from waterfront lots, easy access to boat ramps and KOA swimming pool. Call 1-787-3481 after 2 p.m.

Two and three-quarter acres in Lomax. Call 479-3628.

Cemetery lots. At Grandview, Christius Section, Lot 608, spaces one and two or three and four. \$400 each. Call 471-3581.

Twelve cemetery lots in South Memorial Park. In Lot 621, Angelus Garden. \$5,200. Call 713-480-2006.

King-size bed. Excellent condition. \$150. Call 480-3826.

Cooper lawn edger. \$80. Old Avon dolls. \$5 each. Borg Warner ignition for pre-1975 GM cars. \$60. 1972 Vega radiator, bumper and console. Call 472-5988.

Heavy-duty Schwinn bike. Knee action, luggage carrier on back, white walls. \$135. Call 477-1948.

Black Lab. Three-years-old, no papers. Needs training. Call 422-4069.

FOR RENT

3-1 home in Pearland. With carport, fenced yard and utility building. Call 485-3221.

WANTED

Fourth person for existing three-person car pool. In Lakewood Forest-Norchester area. For 7:15 a.m.-3:45 p.m. work day. Call 376-6879.

Child care in my home for shift workers (all shifts). Call 479-3320.

'Las Vegas Night' set for July 17

Cash in on SCORA's 'Las Vegas Night' (with play money) on July 17. The fun will last from 8 a.m. until midnight at Pasadena's S.P.J.S.T. Hall. Featured attractions will include poker, roulette, blackjack and bingo.

Advance tickets cost \$3 each. They can be purchased from Barbara Bond, General Services; Pat Dunaway, Inspection North; Betty Benson, Phenol; Sherri Hartley, Olefins; Vickie Breshears, Engineering Support; and Ed Overmeyer, South Machine Shop. Admission at the door will cost \$4 per person.



Shellegram

Deer Park Manufacturing Complex

Published weekly by Shell's Deer Park Manufacturing Complex for its employees and pensioners. All inquiries should be addressed to Shellegram, Shell Oil Company, P. O. 100, Deer Park, Texas 77536.

Les Cole-Editor
Extension 6301