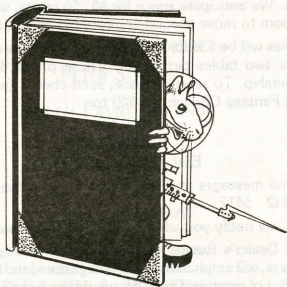


WORLD FANTASY CONVENTION 82'



AT
PARK PLAZA
NEW HAVEN, CONNECTICUT

OCTOBER 29, 30, 31

PROGRESS REPORT #1 DEALER'S ROOM

The dealer's room is located in the 3900-square foot Plaza Room, across a large foyer from the Art Show and the ball rooms. We anticipate space for 40 - 50 tables, with wide aisles and room to move around comfortably behind the tables.

Tables will be \$30 for the first and \$40 for the second, with a limit of two tables per dealer. These prices do not include membership. To reserve space, send checks (payable to The World Fantasy Convention '82) to:

Ken Avery
P.O. Box 8262
East Hartford, CT 06108

Phone messages for Ken can be left with Harold Kinney at (203) 742 - 5417.

Ken will notify you when your table space is confirmed.

The Dealer's Room, in keeping with interests of attending members, will emphasize books, magazines, and artwork - new, used, out-of-print, and rare. We would like a good cross-section, though, so please indicate (with your reservation) what you'll be selling. We'd like to avoid a room full of rare book dealers, with no one at all selling new books by attending authors. Comics, gadgets, and other items with a marginal relationship to the field will be down-played.

We expect the room to sell out well before the convention, so it's best to reserve early.

Cover by Artist Guest of Honor *Don Maitz*

Guests Of Honor

PETER STRAUB

JOSEPH PAYNE BRENNAN

DONALD MAITZ

Toastmaster

CHARLES L. GRANT

Norman L. Hood, Chairman

Harold Kinney, Chairman

Dick Brisson, Art Show Chairman

Ken Avery, Dealer's Room

Kennedy Poyser, Publications

Jim French, Program Director

ART SHOW

Our Artist Guest Of Honor this year is World Fantasy Award winner Don Maitz. Don has won numerous awards both in and out of the fantasy field. It seems that nary a week goes by that a book doesn't appear with a new Maitz cover. Don will be showcasing nearly 20 major works including a completely new piece done especially for the convention program book. Any artist interested in exhibiting in the art show should send an SASE (2 stamps please) to:

Dick Brisson
c/o The Medicine Shoppe
173 Rockdale Ave.
South Dartmouth, MA 02748

We expect to have all space sold out well in advance of the convention (and space is limited), so if you are interested please inquire as soon as possible.

PUBLICATIONS

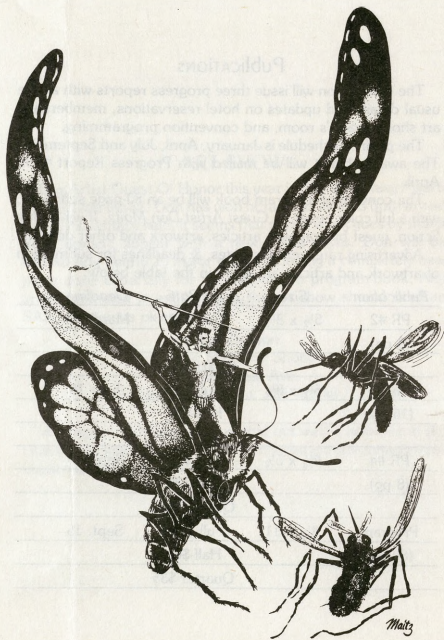
The convention will issue three progress reports with all the usual details and updates on hotel reservations, membership, art show, dealer's room, and convention programming.

The planned schedule is January, April, July and September. The awards ballot will be mailed with Progress Report #2 in April.

The convention program book will be an 80-page softcover, with a full color cover by *Guest Artist Don Maitz*. It will feature fiction, guest biographies, articles, artwork and other delights.

Advertising rates, closing dates, & deadlines for submission of artwork and articles are listed in the table below:

<i>Publication</i>	<i>Size</i>	<i>Ad Rate</i>	<i>Deadline</i>
PR #2	5½ x 8½	Full-\$30	March 15
(8 pg)		Half-\$20	
		Quarter-\$10	
PR #3	5½ x 8½	Full-\$30	June 15
(16 pg)		Half-\$20	
		Quarter-\$10	
PR #4	4¼ x 5½	Full-\$30	Sept. 15
(8 pg)		Half-\$20	
		Quarter-\$10	
Program	8½ x 11	Full-\$100	Sept. 15
(80 pg)		Half-\$60	
		Quarter-\$35	



All artwork © Don Maitz

Dedicated to: Mark Twain and H. Warner Munn

Advertisers - Ad space in the next progress report is \$30.00 a page. This report will be mailed sometime in late March or early April. There will be a small update mailed in August or September with only a minimal amount of advertising space available. For all ads contact *Kennedy Poyser* via convention P.O. Box.

Ad copy, payment (checks payable to World Fantasy Convention '82), submissions, and requests for info should go to:

Kennedy Poyser
42-77 Crommelin St.
Flushing, N.Y. 11355
(212) 961 - 2895

WORLD FANTASY CONVENTION '82

Park Plaza Hotel,
New Haven, Connecticut
October 29 - 31, 1982

NAME _____

ADDRESS _____

CITY _____ STATE _____ ZIP _____

Attending (\$25) Supporting (\$10) Total Enclosed _____

For the Archives: please circle which WFC's you have previously attended.

None 75 76 77 78 79 80 81

Mail To:

World Fantasy Convention '82
P.O. Box 8262
East Hartford, CT 06108

World Fantasy Convention '82
P.O. Box 8262
East Hartford, CT 06108



FIRST CLASS MAIL

001
Fritz Leiber
565 Geary St., #604
San Francisco CA 941102