



FIRST AID KITS - THE OUNCE OF PREVENTION IS UP TO YOU - HERE'S THE POUND OF CURE

You may not be a first aid expert, but with the proper supplies on hand you are on the right track. And without them - well, you won't have an excuse after May 1. Here's why: first aid kits at bargain prices are being made available to you. But that's not all - Shell will pay the first dollar toward your purchase.

During the month of May - before the peak vacation season begins - you can arrange to buy, at or below cost, one (or several) of the kits shown above. As a demonstration of Company interest in home and travel safety, Shell will pay the first dollar toward your purchase of the first one you buy.

The kits will go on display in the cafeteria and at the Main Gate soon. All you have to do is turn in your order - with the money - to the Fire and Safety office or the Stores Department office. There will be a maximum delivery time of 5 days.

The cost? You owe it to yourself to see what the kits contain, but the Marine Kit costs \$5.63, the Sportsman's Kit \$4.60 (including the snake bite unit), the Auto Kit \$2.50, and the Emergency Kit \$5.00.

**REFINERY PEOPLE IN ACTION**



IT ALL FITS TOGETHER...like a jigsaw puzzle. Insulator No. 1, H. O. Harper, wires the two halves of premolded pipe insulation in place as the phenol shutdown rolls along in A Section of the Lube Department.

MONDAY'S THE DAY - YOU MAY BE "SINGLE" UNLESS YOU ACT NOW

If you don't get your completed W-4 form to the Payroll Section of the Treasury Department by the 25th, from a tax standpoint you may as well not have the wife and kids (if you have them in the first place). The law says you must file the new W-4 form with your employer showing your exemptions, or be handled as though you were single. Just a word of advice from George Herren, Supervisor Payrolls, - "your withholding amount will probably change even if you declare the same number of dependents. So be sure to figure the amount to be deducted from your paycheck under the new system as outlined in the booklet sent to you. Then, come next Income Tax time, you will know what to expect."

**SHELLEGRAPH**



No. 181

Friday, April 22, 1966

SHELL PIPE LINE ACTIVE IN GROUP INVESTIGATING LOUISIANA TO ILLINOIS CRUDE OIL LINE

Shell Pipe Line Corporation, along with several oil and pipeline companies, is exploring the possibilities of constructing a large-diameter crude oil pipeline from South Louisiana to Illinois.

The first meeting for the project was held recently, and it was agreed that the present East of Rockies crude oil supply/demand situation favored continued action. A detailed study is now underway to determine routing, line size, and station sites.

It is expected that this pipeline would be multiply-owned and would be an undivided interest type venture.

SAFETY RULE FOR NEXT WEEK

Next Monday the Safety Dollar Mystery Man may embarrass you - as he did to more than just a few this week when he asked to hear about the Safety Rule. Be on guard - and read rule No. 3 on page 5 of your Safety Manual ...in case of fire or the Mystery Man - both can catch you off-guard.



PASADENA PIONEER...and for 35 years a Shell Station owner and operator. C. P. McMurry (left) receives a 35-year plaque from Shell's Houston Marketing District Manager D. R. Haggart. Pasadenans and others who use La Porte Road (Sterling) are familiar with Mac's station and garage in the 700 block. This isn't Mac's first station - he's just been in this one for 30 years. His first station was opened across the street from his present site in 1930 where he spent his first 5 years as a Shell operator. So, next time you're in Mac's vicinity, drop in and see his new silver plaque - and while you're there, you might as well fill'er up with Super Shell - Mac won't mind. After all, service has been his business for 35 years.

TREATING DEPARTMENT EMPLOYEES'  
ANNUAL OLD-TIMERS PARTY

All ex-Treating Department employees and friends are invited to attend the annual Old-Timers' Party to be held at Angel's Grill in Pasadena on Friday night, April 22, at 6:30 p.m. A steak dinner will be served at a cost of \$2.50 per person. If you plan to attend, please contact Henry Boggs at HU-6-2873 or Bailey Gunn at HU-6-7235 before April 20, if possible.



Lepper

Look

*"Try to think of it as an exciting new day of adventure, joy, and achievement."*

O.K., SO YOU'VE BEEN AROUND A LONG TIME -  
BUT HOW MUCH DO YOU REALLY KNOW BY NOW?

How much do you know about Shell? Try these questions and check your answers with the correct ones on page 4.

1. Shell Oil Company grew out of the American Gasoline Company and the Roxana Petroleum Company, both of which were founded in the United States by the Royal Dutch/Shell Group of Companies. What was the founding year?
2. Why is Shell Oil known as an "integrated" oil company?
3. Name the presidents of Shell Oil Company, Shell Chemical Company, Shell Development Company and Shell Pipe Line Corporation.
4. What are the six divisions of Shell Chemical Company?
5. Where are the three major research laboratories of Shell Development Company, and in what areas of research do they specialize?
6. About how many miles of trunk and gathering pipelines does Shell Pipe Line Corporation operate?
7. How many refineries does Shell Oil Company have on stream?
8. Shell Oil's primary product is automotive gasoline, but about how many products in all does the Company market?
9. In 1960, Shell Oil was the sixth largest domestic marketer of automotive gasoline, with six per cent of the market. Where does the Company rank today?
10. Shell's trademark, a seashell, is one of the Company's most valuable assets. What kind of a shell is it?

**PERSONNEL CHANGES**

- D. L. Price - From Operator No. 2 to Operator No. 1 - Aromatics
- S. M. Bear - From Rackman - Dispatching to Machinist No. 1, Engineering Field
- R. E. Pool - From General Helper to Operator No. 2 - Aromatics
- J. J. Kindla - From Fireman to Operator No. 2 - Thermal Cracking
- E. C. Savell - From Operator No. 1 - Distilling to Boilermaker No. 1 - Engineering Field
- A. L. McPhail - From General Helper to Rackman/Pumper-Gauger - Dispatching
- K. W. Moore - From Operator No. 2 to Operator No. 1 - Lube B
- B. Keeling - From Operator No. 1 - Thermal Cracking to Machinist No. 1 - Engineering Field
- W. A. Carlton - From Operator No. 2 to Operator No. 1 - Thermal Cracking

THIS WEEK'S SAFETY RULE WINNERS

- W. E. Jensen - Refinery Lab.
- R. J. Carter - Thermal Cracking
- R. G. Sturrock - Utilities
- W. C. Jahn - Boilermaker
- H. A. Raschke - Painter



**FISHERMAN'S LUCK** - he wins \$50 and has to split it three ways! This fish tale with a new twist got its start when Pipefitter W. N. McKnight tried to guess the weight of a giant sea bass. The critter was hanging in the freezer of a new Pasadena fish market as part of a promotional scheme where the closest guess got \$50 - not the fish! Mac's guess of 139 lbs. 8 oz. was one ounce off - and so were the guesses of two other customers. How's that for the big one that two-thirds got away?

**SNYDIE SHOTS IN SEVENTIES** - if he keeps it up he says he may catch his wife, PAT.



Retired Process Superintendent L.J. SNYDER stroked out a cool 79 at Golfcrest - and in his words "...my first excursion into the 70's and probably will raise havoc with my current, comfortable handicap of 19. Incidentally, it may serve to narrow

the differential between PAT and myself, PAT still being some strokes lower in handicap than I am." SNYDIE figures in a few more years he'll be ready for the pro circuit. He closed his letter by explaining that he had asked PAT to frame his scorecard, but "she indicates that something - namely myself - might well deserve hanging!"

**A BOOK FOR A BUCK** - that may help put the kids through school. A surprising \$30 million in college scholarships in Texas are going unnoticed, so The Texas Manufacturers Assn. has done something about it. For a dollar you can order "College Opportunities for Texas Students" - a 70-page booklet telling the what, where, when, how, and who of these 13,000 scholarships. Just order your copy direct from the TMA, Box 52428, Houston, Texas 77052. Be sure to send check or money order for \$1.00.

**REST STATIONS AND WILDFLOWERS** - a report from the Texas Highway Department. The T.H.D. has added considerable zip in its program of driver convenience by announcing plans to build nine rest areas and unmanned information centers around the state. The nearest one to Houston Refiners will be on IH-10 east of Spur 330, east of Houston. The centers will contain a large bulletin board for travel information, dis-pense maps, and provide rest rooms. One other flowery note: the T.H.D. says they haven't fallen down on their mowing job - but their operations are restricted until the more than 500 varieties of wild flowers have gone to seed.



**THEY RIDE...**that others might walk. Saturday's annual Pasadena Elks San Jacinto Trail riders included June Alden and her dad John, Craft Foreman Engineering Field. Riders from all over the Gulf Coast took part in the ride which provides benefit for some of the states' crippled children. After riding in this year's Salt Grass Trail where at one point she even drove a team of mules, this short ride from Galveston County Park through Pasadena to the San Jacinto Monument was a snap for June. She's 19 and a freshman at San Jacinto College on a music scholarship and wants to teach school some day.

#### PROVIDENT FUND ANNUAL REPORTS READY

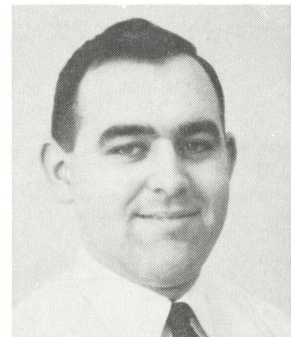
The Provident Fund Annual Reports are in the mail room being readied for mailing Monday to all members. You'll be missing something if you don't give it a good going-over - maybe even an investment tip or two.

#### **WELCOME**

R. H. KANTOR

Engineer

Technological



#### CHEMICAL PROGRESS WEEK STARTS TODAY

Contributions to us all by chemistry and the chemical industry will be emphasized during this, the 13th annual Chemical Progress Week. This national observance, designed to recognize the good neighbor relations of the chemical industry, will highlight efforts to assist in a solution of local and national air and water pollution problems.

ANSWERS TO A QUIZ ABOUT SHELL ON PAGE 2

1. 1912.
2. Because it is engaged in every major phase of the oil business -- from exploration to marketing.
3. Shell Oil, R. C. McCurdy; Shell Chemical, C. W. Humphreys; Shell Development, T. W. Evans; Shell Pipe Line, J. H. Pittinger.
4. Agricultural Chemicals, Ammonia, Industrial Chemicals, Plastics and Resins, Synthetic Rubber, and Petrochemicals.
5. Emeryville, California, new and improved oil and chemical products and processes; Modesto, California, agricultural chemicals; Houston, Texas, exploration and production.
6. At the end of last year there were more than 8,700 miles.
7. Eight. Anacortes, Ciniza, Houston, Martinez, Norco, Odessa, Wilmington-Dominquez and Wood River.
8. About 3,500. After automotive gasoline, the basic major products are kerosene and distillate fuel oils; residual fuel oils; aviation fuels; asphalt; liquified petroleum gas; and lubricants.
9. Third, with eight per cent of the domestic market.
10. A pecten; specifically, a scallop shell, marked by wavy edges and radiating lines.

SERVICE ANNIVERSARIES



W. O. Hopper  
Refinery Lab  
35 Years



L. R. Grounds  
Cat. Cracking  
25 Years

**CLASSIFIEDS**

FOR SALE

Running gear out of a 1957 Chevrolet; 283 cu. in. V-8. Motor and transmission rebuilt with less than 1,000 miles on each. Rear end in good shape.  
Telephone - GR-2-8795

Horse - 4-year old Welch mare. Very gentle for youngster.  
Telephone - GR-3-2565 (after 5:00 p.m.)

1959 GMC 1/2-Ton Pickup.  
Telephone - MI-5-1155

1959 Oldsmobile Station Wagon; air-conditioned; radio; heater; power. Will run \$100.00. Telephone - HU-4-7090

1962 Chevrolet stepside Pickup. Excellent shape; 19,000 miles. \$1,095.00.  
Telephone - GR-2-0018

42" upright attic fan - 1/2 h.p. motor takes 115 or 230 volt - all steel frame; \$25.00.  
Telephone - GR-2-0018

ANYTHING TO MAKE IT EASIER

The form shown below is about as far as we can go toward helping proud papas (and mamas) get recognition for the greatest kids on earth - their own! Don't let it slip your mind - use the form this weekend. The deadline is June 10.

GRADUATE'S REPORTING FORM

Name: \_\_\_\_\_ School: \_\_\_\_\_

Major Course or Degree: \_\_\_\_\_ Activities: \_\_\_\_\_  
(Include school and community)

Offices held, etc. Honors and Awards: \_\_\_\_\_

Future Plans: \_\_\_\_\_

Parent's Name: \_\_\_\_\_ Address: \_\_\_\_\_

Home Phone: \_\_\_\_\_

Refinery Department: \_\_\_\_\_ Remarks: \_\_\_\_\_

Be sure to include a picture and send it with this form to THE SHELLGRAPH - either in the plant mail or to: P. O. Box 100, Deer Park, Texas 77536.