

HIGH WATER---During the heavy rains last week the Houston Ship Channel rose an appreciable amount and the water in the Shell slip rose about six feet above mean tide. The pictures above show some of the high water at the docks. According to our dock employees, this time was one of the highest that the water rose since Hurricane Carla caused extensive flooding in 1961. See page 4 for another picture.

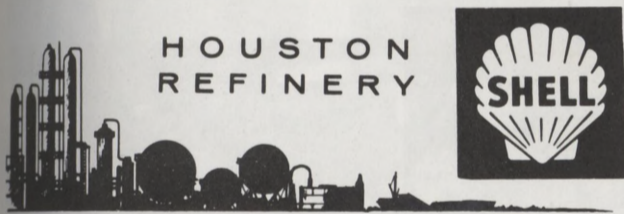
TODAY'S PAPER

This edition of your SHELLEGRAPH is being published on Thursday, February 20, instead of on Friday, February 21, due to the Refinery holiday which falls on Friday. Next week's publication will be out on Friday as usual.

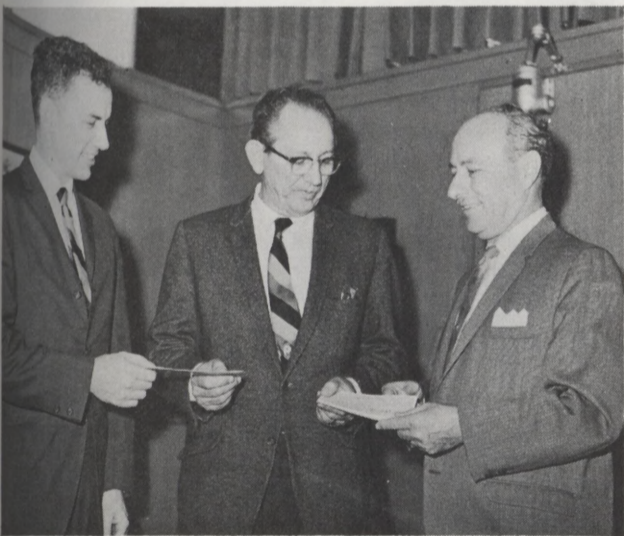


READY TO RIDE INTO THE SUNSET?---These four Refinery westerners who participated in the Refinery's annual Go Texan Day are, from left to right, B. E. Norwood, W. L. Pegues, Sandy Jones, and J. C. Muyres. Norwood is Manager of the Effluent Control Department, and the other three are members of the Refinery Laboratory. See page two for more Refinery Go Texan Day pictures.

SHELLEGRAPH



No. 324 Thursday, February 20, 1969



TAX PAYERS --- Bill Gabig, left, Shell's Houston Chemical Plant Manager, and Leonard Wilson, right, Houston Refinery Manager, present tax payment checks to Harris County Tax Assessor and Collector, Carl Smith. The two checks represent the bulk of Shell's Harris County tax payment of over \$3 million for 1968. About half of that figure was paid to the City of Deer Park and to the Deer Park Independent School District.

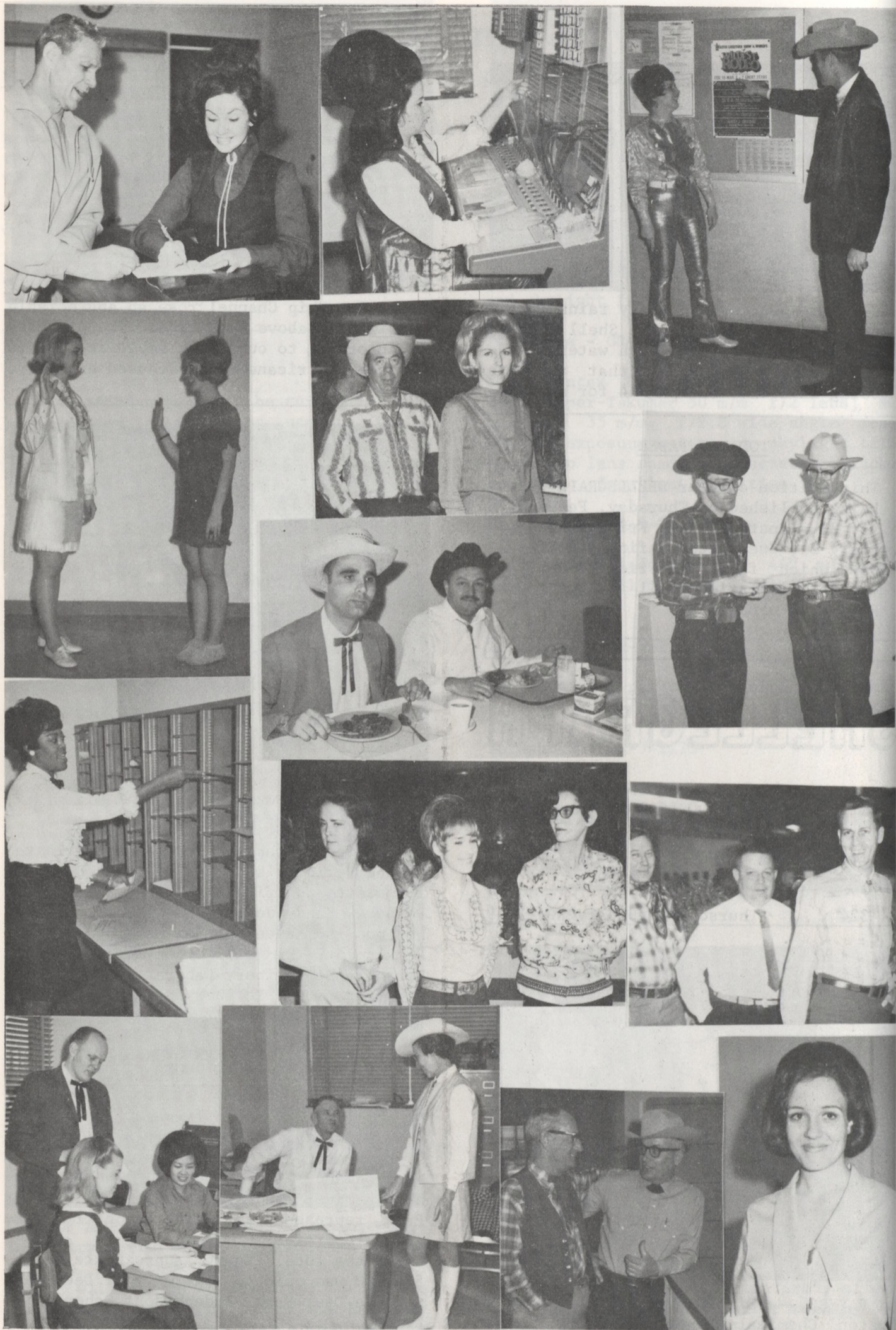
SHELL'S TAXES IN TEXAS OVER \$14.5 MILLION
HARRIS COUNTY'S SHARE EXCEEDS \$3,000,000

Shell, the fourth largest taxpayer in Harris County, has paid over \$3 million in 1968 taxes on the Company's properties in Houston and Harris County. The Refinery and Chemical manufacturing complex in Deer Park represents the bulk of Shell's taxable properties.

Of the total figure, approximately \$1,536,000 was paid to the City of Deer Park and the Deer Park Independent School District.

Harris County received a payment of approximately \$1,019,000, and the remainder of the tax bill, about a half million dollars, was paid to the City of Houston and other incorporated municipal areas in which Shell properties are located.

Shell's total annual tax bill throughout Texas is over \$14,500,000.



GO TEXAN DAY --- Wednesday, February 19, 1969, was observed as Go Texan Day at Houston Refinery in conjunction with the opening day of the 37th Annual Houston Livestock Show and Rodeo. Be sure to attend one of the performances of the event, and if you happen to go to the rodeo on Sunday night, February 23, you'll be able to see some lucky youngster catch the Refinery sponsored calf during the calf scramble event. Another Refinery calf will be "scrambled for" on Friday night, February 28. The pictures above are of some of the Refinery's cowpokes and cowgals at work, eating, and just remembering the days of the west.

DE VICENZO, SIKES, AND ARDA TANGLE ON "SWWG" ON TELEVISION SATURDAY

The last of two semifinal golf matches on "Shell's Wonderful World of Golf" will be televised over KPRC-TV, Channel 2, Saturday afternoon at 4:00 p.m.

Featuring Roberto DeVicenzo, Dan Sikes, and Ben Arda at the London Hunt and Country Club, Ontario, Canada, the match should prove to be very interesting.

Just in case you have wondered what goes into making a television series such as "SWWG", the following items may be of interest.

Filming the 1969 series of "Shell's Wonderful World of Golf" involved complex problems in logistics and close adherence to a tight time schedule.

Moving 8,000 pounds of equipment and a

38-member traveling unit (technicians, a series host, a producer-director and an administrative staff) in and out of 10 match locations required detailed planning.

On match days the crew was on the course by 7 a.m. to set up for the 8 a.m. tee-off.

Equipment rented at each location included a helicopter for aerial views, several four-wheel-drive vehicles for hauling cameras and scenery around the course, and a wide variety of office equipment. In addition, two buses and four sedans transported the crew and local workers to the course.

When the series began eight years ago, the crew was on location 14 to 15 days for each match. The time has now been reduced to five days, with a day for travel and another day for rest.

SERVICE ANNIVERSARIES



25 Years
R. W.
COFFEY
Research

25 Years
L.
FARRIS
Eng. Field

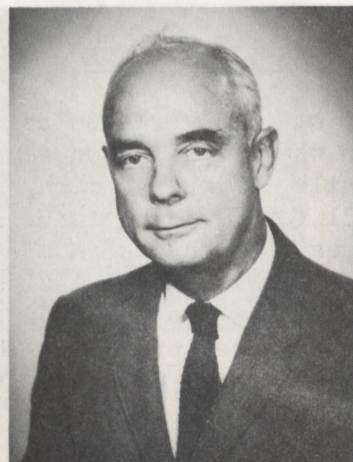
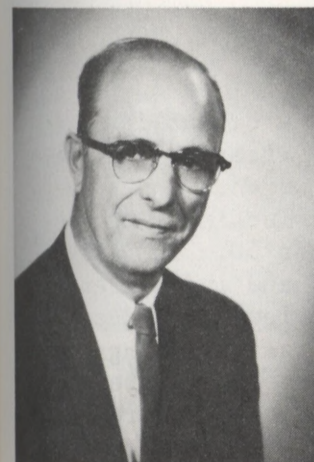
30 Years
D. D.
GALLOWAY
Eng. Serv.



30 Years
C.
HARGROVE
Eng. Field

25 Years
I. C.
MARTIN
Ref. Lab.

30 Years
R. J.
MC CARTHY
Eng. Serv.

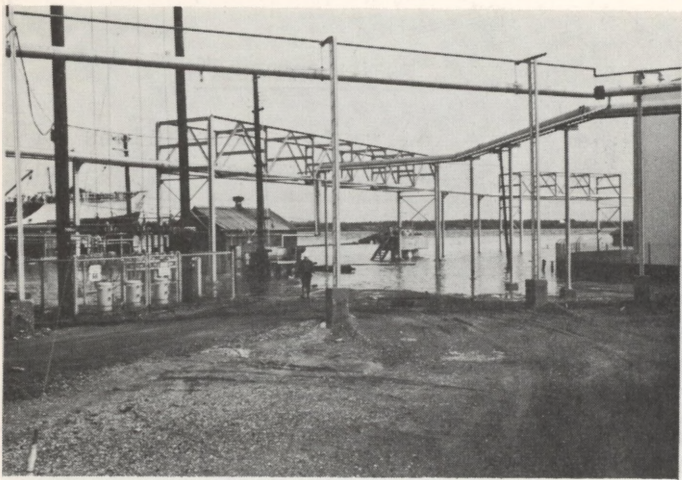


25 Years
E. C.
NEFF
Eng. Field

25 Years
C. F.
STEBBINS
Dispatching

30 Years
C. A.
VETTER
Eng. Field

n Re-
and
go to
catch
11 be
e Re-
west.



WATER, WATER EVERYWHERE --- During last week's heavy rains, a six foot tide caused this flooding of the Refinery dock area. The fire house at left was completely surrounded by water and flooding occurred to about the second pipe rack support column from the left; the water had receded by the time this picture was taken.

CLASSIFIEDS

FOR SALE

1968 model fold-down type camp trailer. Used two weekends.
Telephone - 944-2165

Registered Beagle puppies with excellent markings.
Telephone - 465-1847

16' Plywood boat - Windshield, steering wheel, running lights, etc. No motor or trailer.
\$150.00
Telephone - HI-2-7685

WANTED

Used car - Chrysler product - 1964-65, factory air-conditioning, automatic shift, prefer station wagon or 4-door sedan, good and cheap.
Telephone - 488-0807

.44 Magnum Pistol. New or Used.
Telephone - 747-8934 - 5:30 p.m.-9:00 p.m. weekdays; 9:00 a.m.-6:00 p.m. weekends.

"GO TEXAN - GO TO THE RODEO"

CLASSIFIEDS

FOR SALE

1962 Chevrolet, standard shift, 6-cylinder, 44,000 miles.
\$500.00
Telephone - GR-3-5169

GE Electric Range. Brown, double oven, rotisserie, almost like new.
\$100.00
Telephone - 473-1491

Camera - Anscomatic 726. Instant loading, automatic or manual exposure, range finder, 6 shutter speeds, excellent condition.
\$30.00
Telephone - 473-5603

Remington Model 582 .22 rifle. Excellent condition. Will sell with or without 4x scope.
\$35.00
Telephone - JA-2-6811 after 5:30 p.m.

Browning 9mm High Power Pistol. Like new - seven months old.
\$85.00
Telephone - JA-2-6811

Coldspot air-conditioner, 14,000 B.T.U., like new, used only 3 months; 220 V.A.C. 2-speed.
Sacrifice - \$135.00
Telephone - GR-2-1563 after 5:00 p.m., weekdays.

1963 Chevrolet 1/2 ton pickup. Good condition.
\$595.00 or best cash offer.
Telephone - 946-6611

1962 Chevrolet Bel Air - 4-Dr. sedan; a/c; power steering; new tires.
\$550.00
Telephone - 649-8540

42" round, bronze-tone, Formica top dinette table with 4 vinyl covered chairs - brown and beige color with large extension leaf. Like new.
\$45.00
Telephone - GR-9-3848

SURVEY INDICATES MEN LITTER MORE

According to George Gallup, Jr., President of the American Institute of Public Opinions, sex and age have a strong bearing on whether a person is a "Litterbug." A recent Gallup survey shows men litter nearly twice as much as women. The survey further shows people between the ages of 21 to 35 litter twice as much as those between the ages of 35 to 49 and three times as much as people over 50. The survey also gave insight into why people litter -- carelessness, laziness and indifference, or because no trash receptacles were available. The people interviewed had decided views as to what should be done about the litter problem. They said laws against littering should be more strictly enforced than at present, there should be more trash cans, and more programs of public education on littering. (Source: Bureau of Outdoor Recreation "Mid-Continent Memo.")