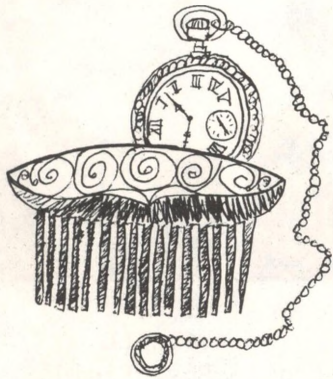


CHRISTMAS --- IS THE MAGIC
STILL THERE FOR YOU?

Most of us who will be exchanging gifts during this holiday season



have probably thanked the Wise Men - the Magi, if you please - for inventing the art of giving presents during this happy time. In fact it's one of the things th-

at makes the time so happy. But we all change, to wit: did you always believe (or do you now) that it's truly a greater joy to give than receive? Givers who get more fun out of giving can look upon O. Henry's "Gift of the Magi" principals and find them as the author says, "the wisest of the wise." But to others who have lost, or driven, the magic of the season from their lives, Jim and Della probably seem like a couple of nuts. (Remember? Jim sold his gold watch to buy Della a set of combs only to find she had sold her hair to buy him a fob chain.) O. Henry finds wisdom in Jim and Della, and says "they are the Magi". Your SHELLEGRAPH goes along with him and hopes your holidays are filled with the warmth and joy of his Magi.



CHEERS - from old Santa ... well, would you believe a helper? Behind that Clause-like exterior you'll find Cafeteria Serviceman Howard Smith, who spread joy with his punch bowl at the Christmas dinner Wednesday. But ho ho ho's come easy with the likes of Sharry Livingston shown here on the receiving end of a cup of holiday cheer.

SHELLEGRAPH



No. 216

Friday, December 23, 1966

'TIS TWO NIGHTS BEFORE CHRISTMAS AND ALL THROUGH THE PLANT ... THERE'S PLENTY STIRRING

Signs of the season are everywhere and the Refinery's no exception. Throughout the plant, decorations (aside from the main display) have appeared, in some cases almost out of nowhere, to extend greetings of the season - even down to special red and green bow ties displayed by a few subtle "decorators". Christmas trees are a natural "get in the spirit" catalyst and have sprung up in several spots where the spirit bubbled over as shown here. The tree on the left is being decorated in the Research lobby by (left to right) Lee Scott, Billie Alexander, Joan Tinker, Barbara Moon, Pat Bezdek, and Claudia Matcek. The Refinery dispensary has also taken on a festive look - thanks to the plant nurses, three of whom are shown here on the right: Charline Hayden, Elizabeth Hechler, and Hortense Hines.



SHELL ANNIVERSARIES



S. F.
GOOD
Gas-Therm. Crkg.
30 Years



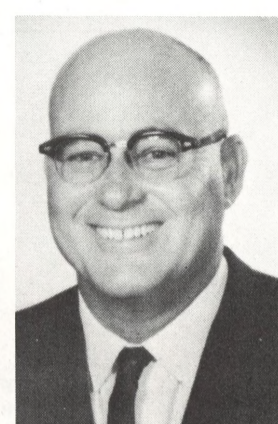
E. W.
LOVE
Eng. Office
30 Years



A. H.
LOUGHRIDGE
Eng. Field
30 Years



R. R.
LAMBERT
Effluent Control
30 Years



W. F.
COLWELL
Eng. Field
25 Years

PLANNING A CHRISTMAS BOWL? DON'T GET HURT

It had to happen. Bowling has become such a popular sport that injuries on the alleys are causing growing concern to the National Safety Council.

Certainly people don't have to be told not to drop bowling balls on their toes. But such accidents happen. And so do other bowling mishaps whose causes are not quite so obvious. Here are some tips to Christmas keggers: Avoid pinching of your fingers when lifting the ball from the rack; be alert in handling the ball so you don't hit another bowler or a spectator; keep beverages or food away from the actual bowling lane and approach -- spillage can make a slippery floor area; store shoes, bowling bags and other equipment so that it doesn't clutter the spectator aisles or bowling area; and make the one for the road a non-alcoholic beverage.

PERSONNEL CHANGES

- T. M. Froelich - From Tester After 18 Mos. to Tester After 24 Mos., Refinery Laboratory
- H. G. Hummel - From Tester After 36 Months, Refinery Lab., to Machinist No. 1, Engineering Field
- W. J. Austin - From Dock Hlpr. to Operator Hlpr. No. 1, Utilities
- C. T. Blasberg - From Pumper/Gauger, Lube C to Operator No. 2, Aromatics
- R. L. Sikora - From General Hlpr. to Operator No. 1, Gas
- J. Morgan - From General Hlpr., Engineering Field to Fireman Thermal Cracking
- S. P. King - From General Hlpr. to Operator No. 2, Lube A

HOUSTON SCOUTS AFTER SAFETY MERIT BADGE VISIT PLANT AND SEE FIRE AND SAFETY DEMONSTRATION

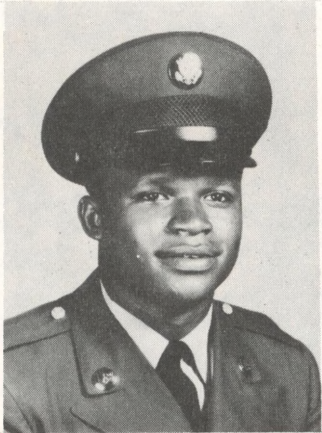
Some 30 Boy Scouts and their leaders from four southwest Houston troops paid a visit to the refinery last Friday evening to learn more about safety. The trip was arranged by Assistant Stores Manager Fred Gerbode, who is Scoutmaster of Troop 740 and a Merit Badge Counselor for the Southwest District of the Sam Houston Area Council. Fred is shown here with former Stores Manager Al Eaton (left), now on assignment at the Houston Data Service Center. Special Tester George Rogers (right) explains the inner-workings of a refractometer to Fred's sons, Farrell (standing), an Eagle Scout, and Timothy (seated), a Second Class Scout.



The group was given a demonstration of the safe handling of petroleum products and a short walk-in tour of the main fire house, conducted by Fire and Safety Inspector John Floyd. During their visit to the Refinery Laboratory, the Scouts were hosted by Operations Foreman, Bill Antone.

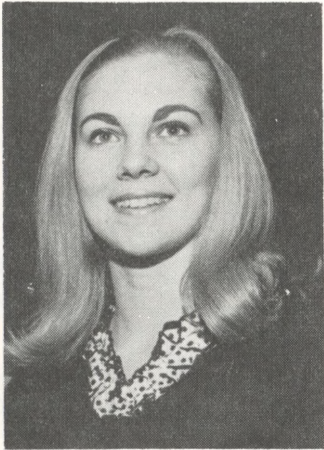
**OIL
DROPS**

KOREAN CHRISTMAS - for **JOE ALLEN WHITE**, son of Gardener **REUBEN WHITE**.



Enroute right now from Seattle to join his Division in Korea, Joe Allen at least had a few days at home during the Christmas season. The stop-over here in Texas followed a three month stay at Camp Polk, Louisiana, where he was assigned as a truck driver. During his visit at home, he was able to help his dad celebrate his 50th birthday earlier this week. Besides Joe Allen, Reuben and his wife **CASTAVIA** have four younger children, **JAMES**, **REUBEN, JR.**, **MILTON**, and **HELEN MARIE**. They all attend Carver school in Baytown.

SURFING SWEETHEART - for **SHELL-A-GO**. This holiday treat for **SHELLEGRAPH** readers is **LINDA HEFLIN**, Sweetheart of the Refinery-sponsored JA Company.



Early next year she will be representing **SHELL-A-GO** at the Houston Area's JA Sweetheart Contest, but right now she carries her load as a production line worker turning out Tuff-Puffs and Smudge Budge. She is a Junior at South

Houston High, where she is a flutist in the marching concert band. She is also in the Latin Club and Square Dance Club. So it figures that she likes Latin and square dancing but surfing and fun on the beach are also favorite pastimes when the weather is right. What are her plans for the future? She says, "I am not certain at this point, maybe this JA work will give me some insight, but I am thinking about San Jacinto College first - then Stephen F. Austin later." But do blonds have more fun? Your **SHELLEGRAPH** forgot to ask.

CREDIT UNION FLASH!

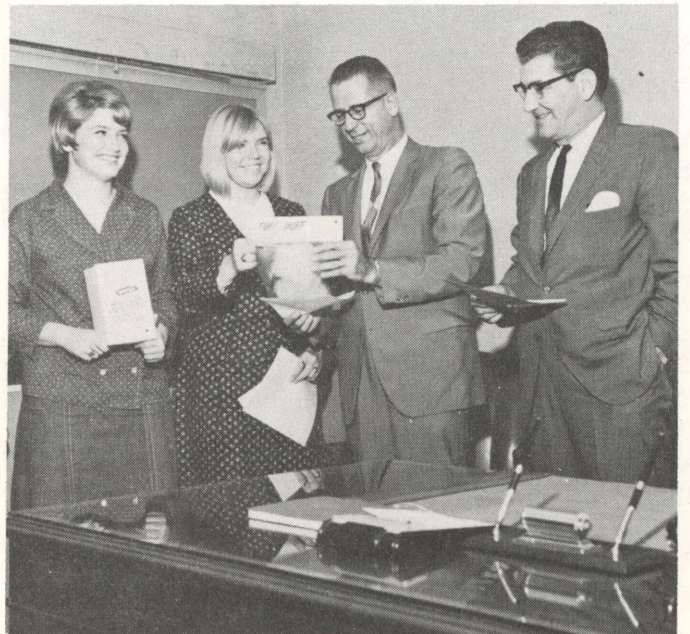
The Board of Directors of the Credit Union declared Wednesday night a 25% interest refund and a dividend of 5.25%. That's a substantial increase over the 4.68% paid to shareholders last year.

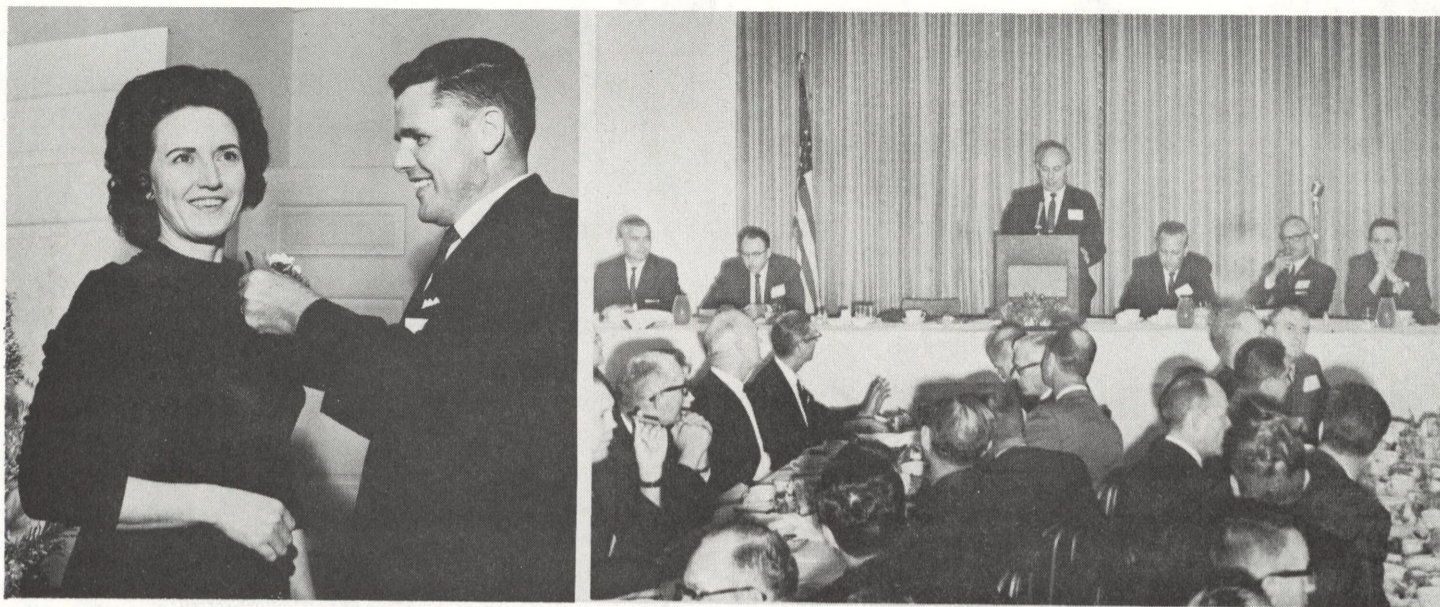
REFINERY PEOPLE IN ACTION



THAT'S WHAT THE SIGN SAYS - get the message? Pointing to their handiwork Painter No. 1 **J. E. Holloway** (left) makes his point to his billboard posting partner, **R. R. Boyd**, also a Painter No. 1. Both Boyd and Holloway posted the Christmas messages on plant billboards which show Santa with a black eye - bringing home the point that a moment of carelessness may be costly - and painful. Resolve now to make your holidays safe and happy ... as the sign says, "Don't mar your holiday with an accident."

SHELL-A-GO SMILES - mean a sale. Officers of the Refinery-sponsored Junior Achievement Company **SHELL-A-GO** are shown here after closing a stock and product sale with Process Superintendent **Ben Baldwin** and Treasury Manager **T. J. Villars** (right). The feminine smiles belong to **Marti Novotny** (left), Vice President of Sales, and **Susan Pearson**, Company President. Marti is holding a box of Smudge Budge, a dry-type grease-absorbent, cleaner as Susan hands Ben a package of Tuff Puff - nylon netting scouring pads. Both products sell for 75 cents a package. The stock share which T. J. holds was the "last of issue", and put the final dollar into the **SHELL-A-GO** venture.





IT'S ALL PART OF THE JOB - says Refinery Superintendent Ray O'Brien as he pins a corsage on Ina McClure, Head Duplicating Operator, at the Supervisory Christmas Party. Held Tuesday night at the Executive Country Club, the gathering was hosted by Refinery Manager Leonard Wilson, shown on the right (standing). Other head table guests (seated left to right) were Process Superintendent Gene Smith, Chief Technologist Mel Renquist, Shell Chemical Plant Superintendent J. T. Robson, Houston Research Director Bill Bailey, and Chief Engineer Jim Ramsey.

NEED A LAST MINUTE CHRISTMAS GIFT IDEA - HOW ABOUT A BOTTLE OF SHELL'S WOOD-METAL POLISH?

Shell Furniture Polish is being re-introduced to our side of the Rockies after an absence of 15 years. It has been marketed successfully on the Pacific Coast for more than 30 years.

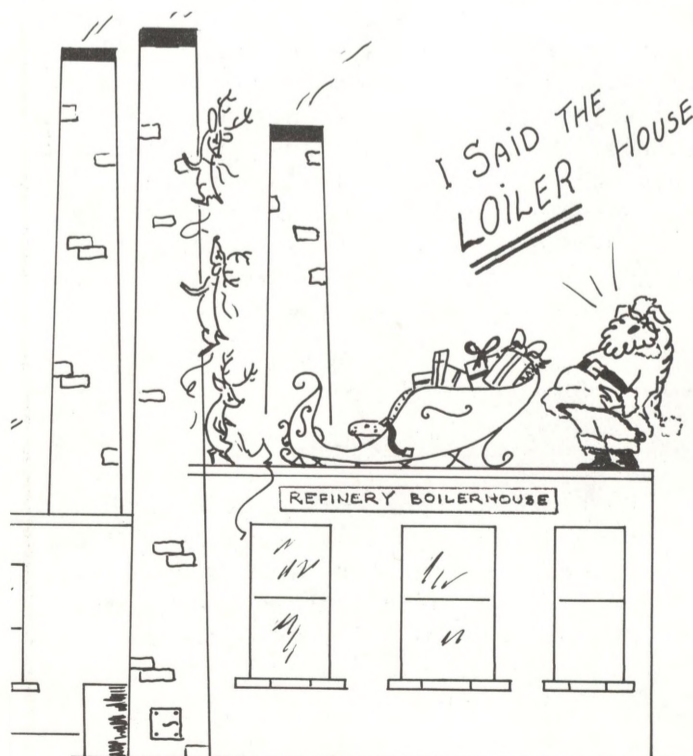
The polish cleans by gentle solvent action and contains no abrasives or other harsh cleansing agents that might damage finishes. It leaves a residual "dry" film which does not catch dust, show finger marks, or plug pores of wood as does conventional oily furniture polishes. It is recommended for blond and dark woods and even metal finishes.

Shell Furniture Polish is packaged in one-pint glass bottles and is sold at Sh-

ell stations at about half the price of competitive brands.

AN ORIGINAL CARTOON - FOR A CHANGE

Thanks to Draftsman Bob Johansen, who is an exhibited artist during his off-hours, the SHELLEGRAPH has a Christmas cartoon strictly for refiners. Your SHELLEGRAPH is always on the lookout for bits of news and humor - so next time you get an idea, put it on paper and send it in. You'll get paid an amount equal only to that charged for classifieds - but think of the fun you'll have!



CLASSIFIEDS

FOR SALE

Sewing machine; excellent condition, walnut; 6-drawer cabinet; bargain at \$50.00

Telephone - HU-6-4457

Welsh pony - 3½ years old. Saddle, blanket, and bridle.

\$165.00

Telephone - Crosby: 428-5971

1956 Oldsmobile Sedan. Motor and body in good condition.

\$125.00

Telephone - GR-2-1652 (Weekends and after 5 p.m. work days.)

HOUSE FOR RENT - (Fairmont Park)

Three large bedrooms, 2 baths, den, kitchen, living room, 2-car detached garage - House completely brick

Telephone - GR-1-2764