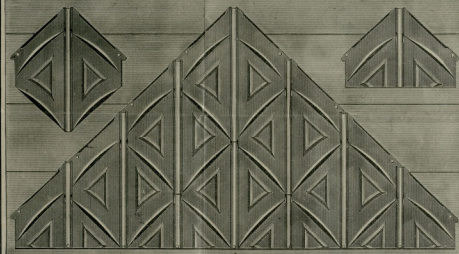


THE BEST  
**TIN ROOFING**  
 IN THE WORLD.

PATENTED AUGUST 29, 1882.



PRICE, \$6.00 PER SQUARE, Plain. \$6.50 PER SQUARE, Painted on both sides.  
 F. O. B., New York.

*Beautiful in appearance, lays almost as tight as though it was soldered. Can be laid by any Carpenter. Does away with all EXPANSION and CONTRACTION, and is as cheap as the ordinary tin roof, and in fact, taking everything into consideration it is the most perfect roofing ever put upon a building for the price, where tin is preferred. These plates will be known to the Trade as the*

**D. W. ROOFING PLATES.**

*The reason for calling them by that name is that the Centre Rib, on each plate, is made in such a manner that the one above slips over the one underneath, forming a perfect "dove-tail" joint for three inches*

*(that being the lap), thereby holding the four plates firmly together, the two under and over-lapping plates being nailed to the roof as shown in cut. They are manufactured from the best charcoal iron, and coated with pure tin, (such as used to be in the market years ago when a tin roof was good for something, not these poor, thin, "coke" plates, washed over with a little lead, called roofing tin,) especially for this purpose, 15x15, and lay 12x12 to the weather, taking 100 plates to the square of 10x10 feet, or 100 sq. feet, put up one square in a case. Full directions for laying in each box. They are not intended for flat roofs, but for any roof where slate or the ordinary shingle will answer.*

We also make this style of plates in Iron, both Painted and Kalameined. By their taking a better quality of iron, and more labor in making, they come a trifle higher than the I. C. plates on following page.

PRICE, PAINTED, \$6.00 PER SQUARE.

PRICE, KALAMEINED, \$7.00 PER SQUARE.

F. O. B., AT WORKS, SCOTSDALE, PA., NEAR PITTSBURGH.



# METALLIC SHINGLES.

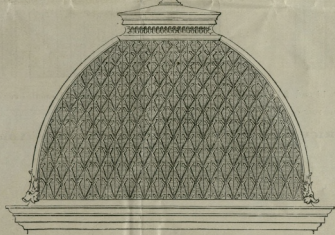
"COMSTOCK'S PATENT"  
**A DOUBLE IRON**

IN USE IN ALL  
**PATENTED Sept. 4,**

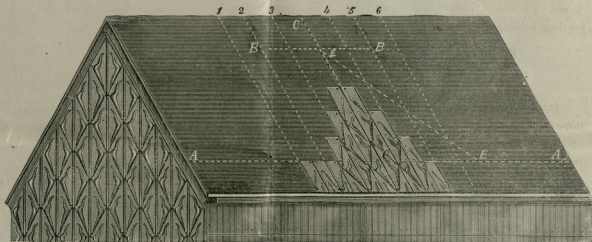
WITH CLASP LOCK.

**FIRE-PROOF ROOF.**

PARTS of the WORLD.  
 '77; Sept. 10, '78.



These Shingles are 8½x16, and lay 250 to the square of 10x10, or 100 square feet. Put up, one square in a case, 10x16x10, and weigh, Painted, 130 lbs.; Kalamined, 140 lbs. Full directions for laying in each case. These goods are well-known to the trade, as we have sold thousands of tons of them in the past six years, the only drawback to them being the price. By their laying double it requires very much more iron to cover a square, and, therefore, it makes them too expensive for ordinary building purposes. They are very ornamental, durable, and thoroughly fire-proof (on account of being a double thickness), and are well adapted for mansards, gables, steeples, etc. They also make a beautiful siding, when people care more for quality and looks than price. We make them both Painted and Kalamined



PRICE, PAINTED,

" KALAMEINED,

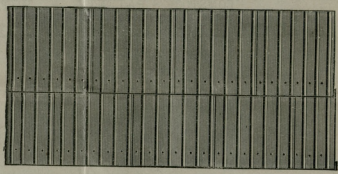
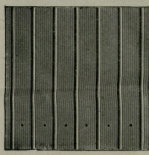
PER SQUARE, \$7.25

" " 8.25

F. O. B., SCOTSDALE, PA.

3/14 HXX #17780

# CORRUGATED IRON SIDING.



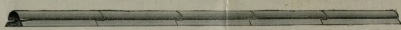
Size of sheets 13 x 14 and 26 x 32. In laying, the end of each sheet is lapped over the sheet below it about one inch, nailing with one row of nails only, about one inch above the lap.

**PRICE, F. O. B., SCOTSDALE, PA., OR NEW YORK,**

Per Square, 10x10, or 100 Square Feet.

|             |        |
|-------------|--------|
| KALAMEINED, | \$6.00 |
| PAINTED,    | 5.00   |

## KALAMEINED IRON RIDGE CAP.



This is a fine finish for Ridges and Hips of Roofs. We make the Cap in lengths of about 2 feet each, and in putting it on it should be nailed in one end only of each length. The next length locks into the nailed end, as shown in the above cut, in such a manner as to cover the nail-head. We make the Cap of Kalameined Iron only. In order to make a first-class job the joints should be soldered after being properly secured to the roof, although it is often used on cheap buildings without.

## METALLIC PAINT.

This is a first-class Paint for Roofing, and made from iron ore, ground in pure linseed oil. We desire to supply it for use in our Roofing, as we believe it will wear longer, and thus keep the Roof in better order than any other.

It is free from deleterious substance and will not impart any taste or in any way injure the water which is collected from the roofs for drinking or other purposes. One gallon covers four "squares" of roof surface (400 square feet).

PRICE, ONE DOLLAR PER GALLON.

**KALAMEINED NAILS, 3 CENTS NET PER POUND.**

The D. T. and I. C. Plates take  $\frac{1}{2}$  pound to the Square. The Comstock Shingles take  $1\frac{1}{2}$  pounds to the Square.

## ANGLO-AMERICAN ROOFING CO.

22 CLIFF STREET, N. Y.