

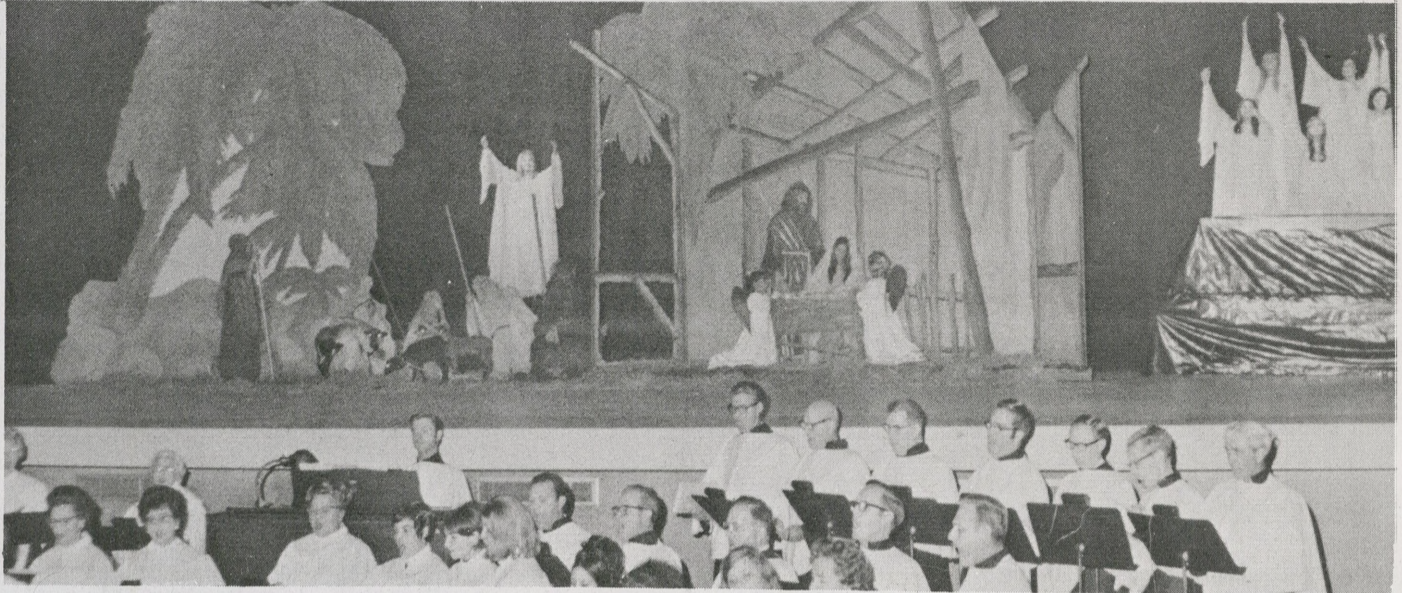


# Shellegraph

Houston Refinery

No. 50

Thursday, December 24, 1970



## CHRISTMAS SPIRIT HITS REFINERY--GOOD DEEDS IN EVIDENCE EVERYWHERE

Christmas came to the Houston Refinery early in the month of December as employees got the urge to decorate and to spread the Christmas spirit.

All around the plant decorations of all shapes and sizes began appearing. There was a scotch pine tree in the Refinery Lab, a white tree in the main building lobby, a gaily decorated tropical plant is featured in the Research Lab, and a bandage, aspirin, medical supply tree was installed in the Plant Hospital as well as other spontaneous decorations around the plant.

Larry Gruber, Effluent Control, again donned his choir attire to participate in the Houston Recreation Department's annual

Christmas pageant in the Miller Outdoor Theatre. The pageant, band concert and tree of light ceremony features hundreds of area youngsters.

Even busy managers including John G. Pratt, Jim Ramsey and Mel Renquist, members of the Optimist and Rotary Clubs of Pasadena helped the Salvation Army raise funds for the groups Christmas projects by being the familiar bell ringers last weekend.

Research employees have been gathering old clothes and food items for donation to an organization which helps teen drug users.

For more pictures on Christmas events--see Page 2.



Pasadena Rotary Club and Optimist Club members were Bell Ringers for the Salvation Army last weekend, including J. D. Ramsey,

F. G. Reitz, J. G. Pratt and M. L. Renquist (not pictured). Above, is the tree of light ceremony and Christmas pageant.

### REFINERS AWAIT CHRISTMAS



Posing for a gag picture with mistletoe someone installed in Research are Brenda Hughes and J. H. Moser. In center, Sheri

Ashby decorated a tropical plant. Right Jim Stewart, Shirley Brasher, Mittie Deaton and Jody Johnston decorated the Lab tree.



Dick Bannerot received a trolling motor at his recent retirement party. In background is Bill Bailey.

### FORMER PUMPER NO. 1 DIES SERVICES HELD FOR JACK BRASHEAR

Funeral services were held Saturday, December 19, for James J. (Jack) Brashear, who died in a Pasadena hospital on Friday, December 18.

He is survived by his widow, Mrs. Nora Elizabeth Brashear, two daughters and two sons.

Jack retired in December 1953 after completing 24½ years of service. At the time of his retirement, he was a Pumper #1 in the Dispatching Department. He had served as a Painter and Rackman during his career with Shell.



### DON'T LET TIME TAKE CHILDREN'S SCHOLARSHIPS, APPLY BY FEB. 12

As the new year approaches, we get a feeling of how fast time moves along. And if we don't watch it, February 12, 1971 will sneak up on everyone before completed entry blanks for the 50 college scholarships available to Shell children in the 1972 competition are all submitted to the Shell Companies Foundation.

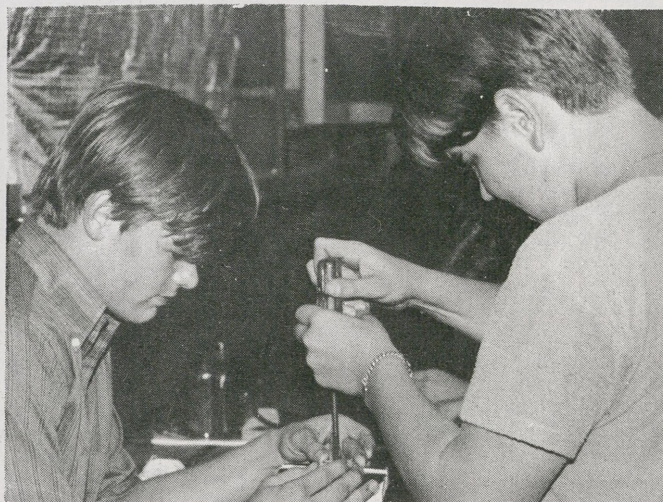
Blanks are to be submitted to the Foundation, Scholarship Competition, c/o 6th Floor, 1 Shell Plaza, Houston, Texas 77002 .

To be eligible for the 1972 competition, students must be either second-semester juniors or first-semester seniors as of February 1971, and at that time must take the National Merit Scholarship Qualifying Test.



A reminder of his old days in the Dispatching Department, a toy train, is unpacked by John Harkness, right, as presented by E. M. Rogers at a recent party. Harkness transferred to General Offices after 26 years at the Refinery.

**SHELLITE, JUNIOR ACHIEVEMENT COMPANY, JOINS BUSINESS COMMUNITY**



Junior Achievement company members Suzanne Lakey, Mary Rowden, Janet Walker, Linda

Douglass, Carolyn Leger, Robert Criddle and Jim Keen each learn to operate equipment in their workshop while manufacturing their plexiglass notepads.

**Second Segment**

**BURGLARS PREFER SMALL HOMES AND APARTMENTS FOR EASY LOOT**

This is the second part of a story by M. Robert Beasley.

Burglars also point out the fact that loot obtained in prowling small homes and apartments, such as clothing, luggage, sporting equipment, cameras, television sets, is much easier disposed than costly furs or jewelry.

The most common and easiest method of entry into private homes is the manipulation of spring-type snap locks. Skilled hands require only a thin piece of plastic--the kind found in any man's wallet. This is inserted between the casing and door, directly in line with the lock. The resilient plastic easily pushes the lock back, and the door is opened instantly, without a sound.

To stop this easy entry, replace spring-type locks with deadbolt appliances, which require the turn of a key for locking. Such locks won't make your home invulnerable, but will discourage many burglars.

Side and back doors, and basement doors and windows are also favorite points of entrance, because there is less chance of being spotted by neighbors. These avenues of entrance can be effectively protected through use of sliding barrel bolts on all service-entry doors, and crossbar arrangements or hasp locks on basement windows.

Doors having hinge pins on the outside are also open invitations to the experienced burglar. He merely has to slip out the hinge pins, and the entire door can be lifted out, even with a costly lock on the opposite side of the door. Check your hinges.

As shocking as it may sound, many burglaries are committed with the use of actual house keys. Families often have the dangerous habit of hiding a key for use by other persons, or in the case of loss.

Another common and frequently disastrous habit is having an address in your key case. This may bring back lost keys, but it can also allow a crook to make duplicates, return the keys, and later burglarize your home.

Young high school students are learning about the American free enterprise system by participating in Shellite, the Shell Refinery sponsored Junior Achievement company.

Shellite is manufacturing and selling a plexiglass notepad for \$2.25.

Under the leadership of Richard Gerth, Tech; George Roe, Hydroprocessing, Vic Edwards, Treasury; and Dan McNeill, Tech, Shellite is manufacturing a plexiglass pad which allows for tearing off of each note..

The company, which is not subsidized by the sponsor, must sell shares to raise money before they can start manufacturing and selling their product.

The advisers meet with the 23 students from South Houston, Deer Park, Pasadena, Rayburn and Dobie High Schools each Wednesday to manufacture the product and make plans for marketing.

Three girls, Kathy Kindla and Linda and Donna Douglass, are Refinery daughters. Officers include Cynthia Dees, President; Janet Walker, Vice President Manufacturing; Terry Wright, Vice President Sales; and Sylvia Morrison, Secretary, all from Deer Park High School. Vicki Williams, Rayburn High School, is Treasurer, Donna Douglass, Deer Park, is Personnel Director.

Shellite will start selling their plexiglass notepad door to door in January. They are also preparing for two trade fairs to be held at Houston shopping centers in the spring.

**SHELLEGRAPH**

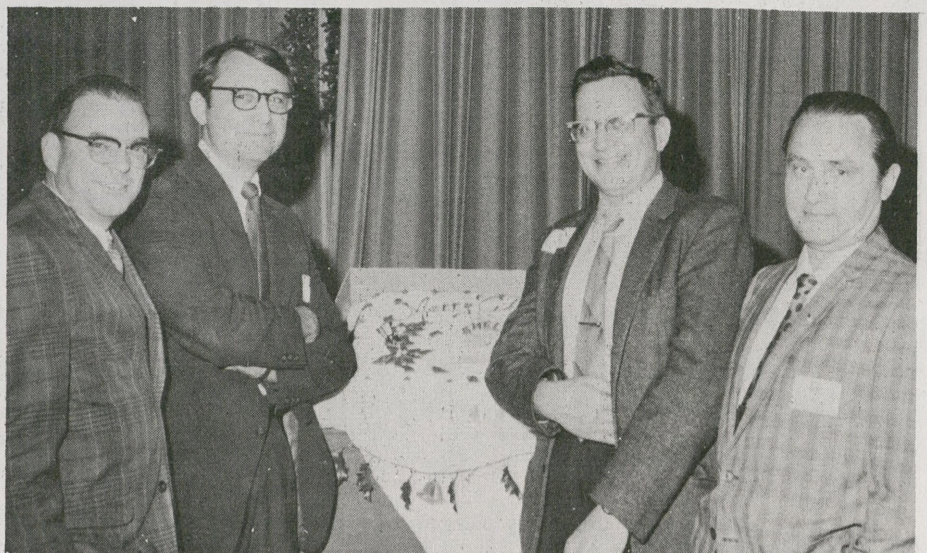
Published by Shell Oil Company for its Houston Refinery and Houston Research employees at Deer Park, Texas.

Mrs. J. B. Ochoa--Editor

Reprints allowed only by request. To submit news and photographs, call extension 541 or send material to Room 103, Main Office Annex.

Deadline for ads--Wednesday noon.

REFINERY MANAGER HOSTS SUPERVISORS AT ANNUAL CHRISTMAS PARTY



Pleasant conversations were held at the party between Jack Cox, H. J. Bettancourt,

J. K. Bagley, P. V. Peurifoy, Bob Robinson, Steve Slaymaker and E. G. Carlson.



Guests at party included Don Lanning, Claude Burgess, host John Pratt, J. C. Dunbar, Bo-

din Hugger. Les Scott and Ray Hornsby assisted in giving out name tags to guests.

CLASSIFIEDS

1967 2-door T-Bird, still in warranty, clean, has all extras, must sell, \$1550. Telephone: 471-3113

2 open arm occasional chairs, \$4 each or \$7 for both. 3/4 width hollywood bed with 2" foam mattress. Telephone: 946-6273

1959 Cushman electric golf cart. Telephone: 946-2545

White French provincial bedroom suite, 72" triple dresser, 9 drawers, large mirror, twin headboards with frames, night table and luggage bench with cushion, glass tops on dresser & night table, \$175. Call after 6 or weekends. Telephone: 591-3943

'67 Pontiac GTO, all power, a/c, a/t, console, Hurst dual-gate shifter, bucket seats, gold, black vinyl interior, 36,000 miles. Telephone: 946-6273

1966 Plymouth Fury station wagon, brown, good condition, 58,000 miles, \$795. Telephone: 1-591-2732

NOTE OF THANKS

May we express our thanks to our many friends for their thoughtfulness and comfort when we lost our beloved daughter, Donna. Your deeds will never be forgotten.

The Howard Harp family

Please pass on my appreciation to the many kind friends at the refinery who made my 26 years here such a stimulating joy. The party was a grand climax and the gifts will be treasured both in themselves and as a constant reminder of my life and friends at Deer Park. Thank you from the bottom of my heart.

John B. Harkness

CREDIT UNION FLASH--DIVIDEND UP

The Board of Directors of the Credit Union declared a 25% interest refund and a dividend of 5.75% for 1970.