



## DPMC's oldest power plant soon will halt operations

Plans are currently being made to permanently shut down the boilers at Power Plant No. 1, the Complex's oldest steam-generating facility, later this month. The dramatic changes in energy consumption, with the increasing use of energy conservation and reduced process demands, led to the decision to shut down the unit rather than mothball it indefinitely.

Built in the late 1940s, Power Plant 1 carried a staff of eight operators and four foremen.

"There was no need to maintain these boilers with the situation as it looked in the '80s," said David Ross, TSO in Utilities North who helped with

the shutdown. "We considered mothballing it, but it would have cost us \$1 million initially, and another \$200,000 a year for maintenance. We couldn't justify the cost."

It's no secret that steam requirements from DPMC boilers have dropped sharply in the past few years. This is largely due to the economy which has been running on empty recently, dampening consumer demand. But other factors beside the lethargic economy also contributed to Power Plant 1's boiler shutdown.

"The biggest single factor was the shutdown of OP-II," Ross said. The olefins plant

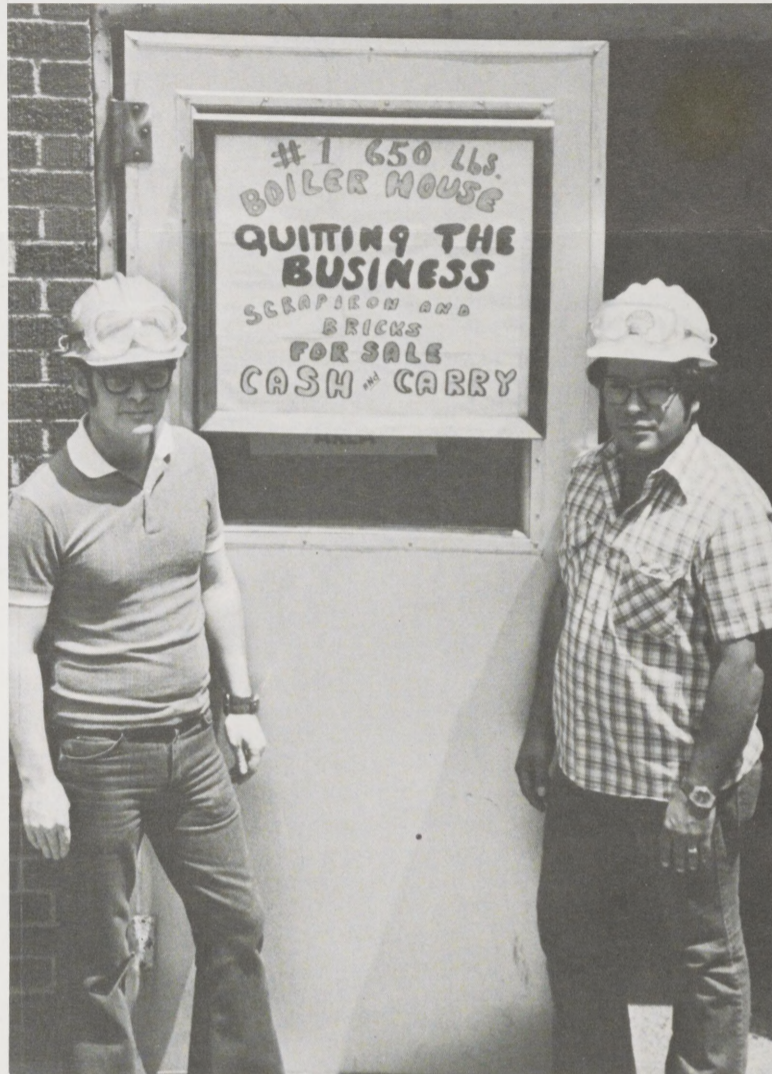
had been one of DPMC's biggest steam consumers; when it ceased production, it left a wide gap in steam production. Furthermore, when OP-II eventually comes back up, a number of changes will have been made so the unit won't need the kind of energy it did in the past.

The Central Power Station's (CPS) conversion to natural gas also led to the shutdown. Curtis Cook, process manager, Utilities North, said the switch to gas allowed CPS to run economically at higher rates. It also helped maximize cogeneration, in which electricity is produced along with low pressure steam.

These factors, as well as other energy conservation projects planned for the future, meant that the steam capacity from the six 650 boilers at Power Plant 1 wouldn't be needed in the next decade.

The shutdown of Power Plant 1's boilers will have virtually no effect on energy requirements at DPMC. In the past, they had been run at low rates serving primarily as a back-up for the other boilers at CPS and Utilities South.

Ross explained that the boilers at Power Plant 1 were used only as needed. "Our strategy is to carry only enough surplus to meet the demand if we lose our largest boiler. Additionally, we have a list of units — a curtailment list — that can quickly reduce their steam demand if necessary," he said. In the future, he added, Power Plant 2 will be used as the primary back-up.

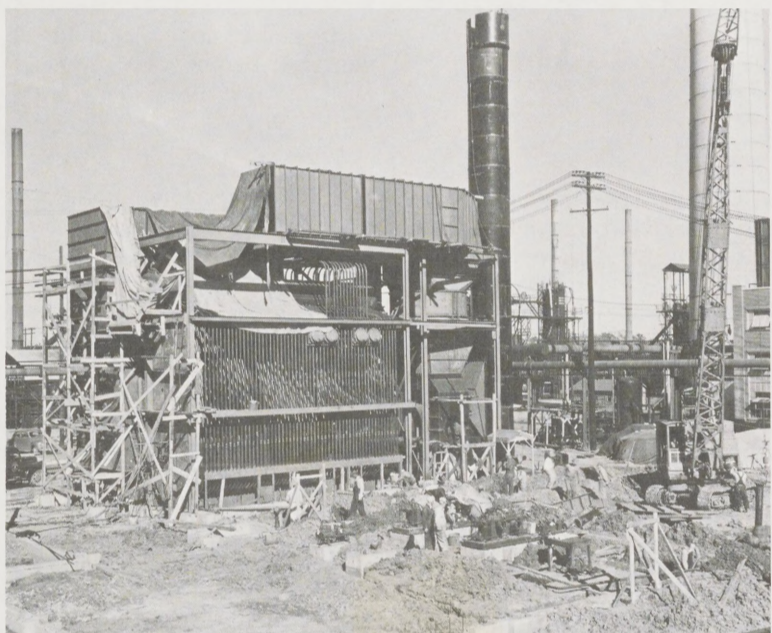


Utilities operators Dan Vogt, left, and Joe Trevino, right, stand in front of a lighthearted sign taped on the control room door at Power Plant 1, which is being permanently shut down.

The economic incentives are the most attractive aspect of the shutdown. "We expect to recover \$1.5 million a year in fixed costs from the beginning," Ross said. He noted that because of their age, the boilers are a high maintenance

item. "In addition to turbine and pump replacements, the entire instrumentation system is obsolete and would have been replaced soon," he said. The old unit may be out-

Continued on page 2



This photograph, made on Dec. 31, 1945, shows the view from the southwest as the first boiler was being built at Power Plant 1. The two boiler feedwater pumps had already been set in what would later become the control and pump room.

## Science Fair whiz kids tour CPS, Environmental

Two busloads of teen-agers visited the Complex several weeks ago, but they weren't your typical high school students. They were all whiz kids with ravenous



**HEART OF THE SYSTEM** — Rob Jacoby, second from left, led this group of students to the top of the aeration basin at the North Effluent Treaters. There, he explained the activated sludge process that biologically breaks down waste — the heart of the DPMC environmental conservation system.

scientific appetites.

The students, who toured Central Power Station (CPS) and the Environmental Conservation facilities, were all competing in the 33rd International Science and Engineering Fair held at the Astrohall last month.

More than 1,400 students and sponsors from the United States, Puerto Rico and seven foreign nations competed for prizes at the fair. They worked on projects as diverse as designing a mechanical arm for a friend who lost his arm in an accident to tracing the effects of acid rain on the environment.

The students who chose to visit DPMC — a number of tours were available, including NASA and the Houston Ship Channel — got an inside look at one of the world's largest petrochemical plants. These young scientists probably found their curiosity sparked more than once as they toured the Complex.

"These are some of the brightest high school students in the world," said Bill Gibson, DPMC Community Relations Manager, who hosted the tours. "We tried to give them an idea of what a petrochemical complex actually does."

One group of students spent the morning touring DPMC's environmental protection facilities. The students had a chance to walk through the North Treaters, and they also visited the belt filters and the incinerator at DPMC South.

"We tried to illustrate the basic environmental conservation processes," said Rob Jacoby, Plant Engineering, who served as one of the tourguides. "We also tried to convey the commitment Shell has in the area of environmental protection."

Several other folks from Environmental served as tourguides, including Cindy Graham, Bob Pesl, Wilbert Pegues and Mike McCarthy.

Jerry Ivie, Manager of Environmental Operations, said, "We're very proud of our effort in the environmental area. These high school students need to be aware of what industry is doing about pollution."

Another group focused on energy as it toured CPS. There, the students listened to a presentation on cogeneration, the efficient, simultaneous production of both electricity and steam for manufacturing processes, by Ken Jones, Process Engineering.

The tour began in the CPS control room, before the students went outside for a walking tour of the boiler area, the generators and the water treater control room.

Rusty Harrison, training coordinator at Utilities Central, said, "We tried to get across the function of CPS in the Complex — and how we do our business." Harrison served as one of the CPS tourguides, along with Wallace Ledet, Don Weaver, Bill Wendes, Don Treat and Chuck Thompson.

### Tomorrow is deadline for 1982 Graduate's issue

The deadline for submitting information forms and photographs for the Shellegram's annual Graduate's issue is tomorrow, June 4. Material submitted after the June 4th deadline will not be accepted.

If you would like a graduate in your family honored, send an information form and a picture (with the student's name lightly printed on the back) to the Shellegram office in the North Cafeteria. Forms can be sent through company mail, or dropped in a special box in the Shellegram office. The mailing address outside the plant is P.O. Box 100, Deer Park, Texas, 77536.

Even though tomorrow is the deadline, you still have time if you act quickly. But remember, the Shellegram may have a Graduate's issue every year, but you won't have a graduate every year.

# Classifieds

## FOR SALE

1975 Datsun 710. Four speed with AM-FM eight-track stereo and triaxial speakers. Uses regular gas. Red with black interior. \$1,850. Call 488-0094 after 4 p.m.

1980 Chevrolet half-ton Fleetside. Three speed, standard, six cylinder. AM-FM. 1955 Chevrolet half-ton Stepside. Six cylinder, three speed standard. Make an offer. Call 487-1368.

1964 Volkswagen Squareback. Runs. Body rough. Drive to work or use for parts. \$300. Call 471-7953.

1981 Honda 650 Custom. \$2,100. Call 427-8207.

1971 BMW R75-5 brown motorcycle. Fully dressed. \$1,800 or will consider in a trade. Call 471-5729.

Camping cot. Lavatory with fixtures. Ward's Overload shocks for 70-76 G.M. Med. car. Four Firestone G70x15 raised-letter tires. Call 472-5988.

El Camino camper cover. \$150. Call 472-3018.

Garden tractor. 14 horsepower. Includes 48-inch mower, all garden attachments. Excellent condition. \$3,200. Call 487-4820 or 449-3273.

1976 16-foot Galaxy Tri-hull. 130 horsepower Volvo inboard-outboard motor. White with maroon interior. Many extras. \$3,200. Call 479-6779.

100,000 BTU central heat unit. \$40. Call 472-4986.

Old Coke machine. \$40. Call 472-4986.

21-inch Sear's color TV. Three years old. Floor model in mint condition. \$350 firm. Call 479-0650.

Bedroom furniture. Queen-size bed, antiqued off-white. Includes headboard, frame, Simmons Beautyrest mattress and box springs. Matching wardrobe. \$250 for all — you haul. Solid-oak antiqued off-white dining room table with fruitwood top, six chairs with upholstered seats. Credenza buffet with fruitwood top. \$350 for all — you haul. Call 729-9770.

Remington Wingmaster Model 870 12-gauge shotgun. Modified barrel with ribbed site. \$200. Call 472-0125.

AKC Dachshund. Two males, nine weeks old. \$150. Call 479-7145 after 5 p.m.

## FREE

Kittens. Full litter to choose from. Eight to 12 weeks old. Call 471-3008.

## WANTED

A used 16-inch boy's bicycle in good condition. Call 471-5729.

## PERSONALS

We wish to express our thanks and appreciation to our friends at Shell Refinery for making my retirement a joyful and memorable occasion. Our friends are always welcome at our home, so please stop by. We live at 1403 Harrop in Pasadena.

**Bennie and Della Christ**

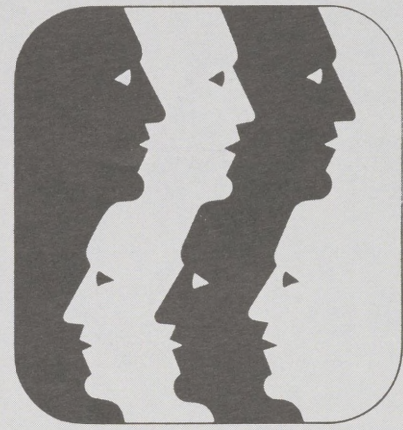
I would like to thank everyone that helped make my retirement party such a memorable experience. My wife and I are living in Kingsland, Texas, on Lake L.B.J. Thanks again.

**J.F. Lieder**

I want to thank all my friends and coworkers for the gifts and cake to help me celebrate my retirement. I will never forget you all and I will miss all the gags and jokes that you pulled on me in the past. If any of you are ever up this way, stop in for a visit. Thanks again and I wish you all the best.

**Barney C. Gaines**

P.S. We will always have plenty of turkey on the table.



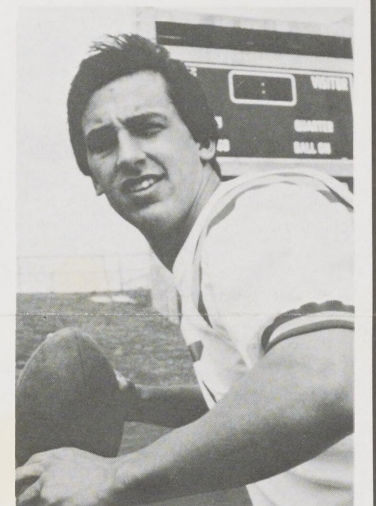
# Up and Coming



Gylla Headley

Gylla Headley, daughter of Madonna Headley, a clerk in Reproduction, was recently nominated as a United States National Mathematics award winner, an honor bestowed on only one-half of one percent of the nation's math students. The 12-year-old sixth-grader at Gentry Junior High in Baytown will have her personal biography printed in the 1982 U.S. Achievement Academy National Awards Yearbook. The award also qualifies her to apply for a USAA college scholarship, although college is a bit ahead of even this gifted student. Gylla is also a jazz and tap dancer, a member of the band, and she has written a play for her class.

Doug Powell, son of Ken Powell, BA-SR Process Manager, recently signed a national letter of intent to play football for Louisiana State University. The prep quarterback from Eisenhower High School passed for 1,200 yards and 15 touchdowns, and ran for five more last season. He was a unanimous selection to the District 21-5A all-star team, and he was one of the state's "Super 60" blue-chippers. Even though he was recruited by schools like SMU and Texas, Powell chose LSU. He picked the Baton Rouge school not only for its dental program, but because he has family ties there — it's also the spot where his father began his Shell career in 1966 at the Geismar Plant.



Doug Powell

Mark McNair, son of A. B. McNair, Dispatching Operations, recently was awarded the prestigious Air Medal for his role in a historic flight two years ago. McNair, First Lieutenant in the U.S. Air Force, served as co-pilot during a nonstop flight from Hurlburt Field in Florida to Andersen Air Force Base in Guam in 1979. The 29 and one-half hour mission was the longest nonstop flight ever accomplished by a C-130 transport plane. The award cites McNair for his "exceptional skill and airmanship in overcoming such obstacles as thunderstorms, adverse weather, and minimum visibility during the four in-flight refuelings that were required."



Mark McNair



**KING PINS** — Dead Wood won the 1982 SCORA Mixed Bowling League title. Team members include, from left to right: Clayton Hardy, A Department; Steve Capps, Process Engineering; Tony Pyer, Intermediates and Solvents; Vickie Breshears, Engineering Support; Rick Swain, Process Engineering; and Mike Rudnicki, Process Engineering. Gerry Olivo is not pictured.

## SCORA Bowling final standings

TEAM	WON	LOST
Dead Wood	88½	51½
Shafts	88	52
Combination	86	54
Hi Rollers	77	63
Alley Cats	77	63
Splinters	75	65
Lucky Strikes	72	68
Chaos	68	72
Heavy Ends	67½	72½
Jokers	65	75
Whealers	62½	77½
Gutter Dusters	60½	79½
Rollercoasters	60	80
Keglers	59	81
Untouchables	58	82
Renegades	56	84

## Power Plant 1 closes operations

Continued from page 1

dated, but it holds many memories for the folks at Utilities. Bill Ursprung, an operations supervisor with 44 years of service at DPMC, started his Shell career as a helper in the old boiler house.

"We had a lot of good times, hard times," he said. "Back

then, you had to literally fire the boilers by hand. You were constantly on the move. But I honestly never thought I'd see the day Power Plant 1 would go down."

Ross said the Utilities Department will have to coordinate its scheduled boiler

shutdowns more closely with other major steam consumers and work hard to minimize the effects of emergency shutdowns. "But to keep the boilers for insurance now would be a luxury," he said, "and at an annual cost of \$1.5 million, that's a luxury we can't afford."



## Shellegram

The Shellegram is published each week by Shell's Deer Park Manufacturing Complex for the purpose of informing and recognizing pensioners and employees. All inquiries and correspondence should be addressed to the Shellegram editor.

John P. Abbott  
Editor  
Extension 6301  
N. Cafeteria

Shell Oil Company  
P.O. Box 100  
Deer Park, Texas  
77536