

# "KUZBAS"

AN OPPORTUNITY  
FOR ENGINEERS  
AND WORKERS



PROSPECTUS

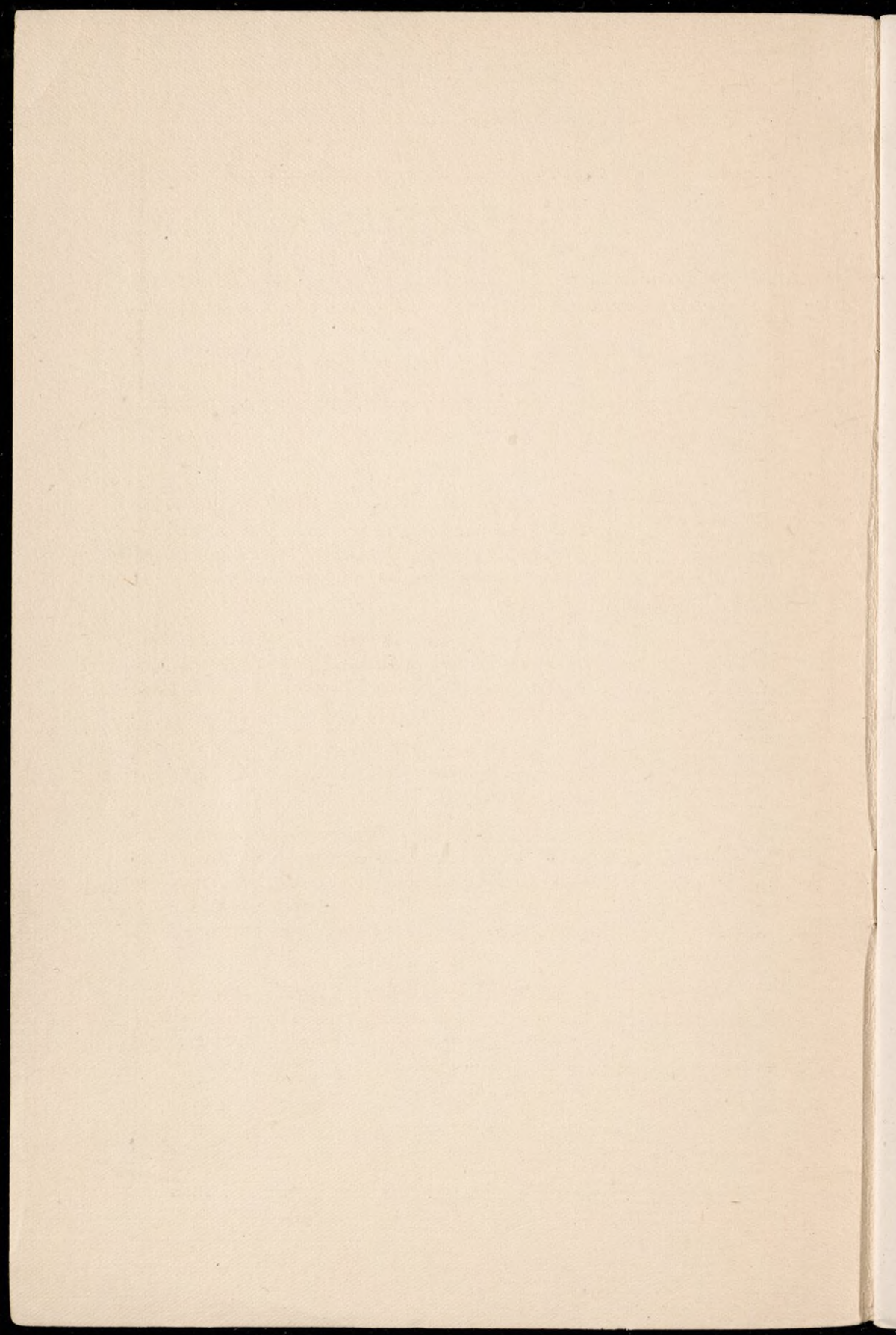
---

*Price 10 Cents*

---

"KUZBAS"

Room 303, 110 West 40th Street, New York City, N. Y.



## WANTED

*American Engineers and Workers for Soviet Russia in the  
Kuznets Coal and Iron Basin by the Autonomous Industrial  
Colony — "Kuzbas".*

*Room 303, 110 West 40th Street, New York City, N. Y.*

Two of the most valuable concessions in Soviet Russia have been taken off the concession market and are now held for exploitation by an organization of American workers. This organization is being created at the present time from industrially qualified men who desire to do the job.

The organization will supply coal for the Trans-Siberian Railroad and the general needs of Soviet Russia; develop a big machine industry in the Kuznets Basin and become the industrial center of Siberian economic life.

The group of foreign workers will produce for use and the extension of its enterprises without the limitations of capitalist industry—rent, interest and profit.

It is a great experiment to create a big machine industry that will not feed a parasitic society, but will return to the worker the full product of his labor. Many difficulties must be overcome, but it is a milestone along the road of human progress that such resources and opportunities are now available for such an experiment.

What the world needs is more service from the engineer, and Kuzbas gives them at last the opportunity to build what heretofore only a few have dared dream—a co-ordinated industry that will serve mankind.

Every worker should read the following pages carefully. In this pamphlet he will find all the details of a great plan whereby American workers and engineers can go to Russia, take over an

immense industrial project, and develop it for the benefit of humanity, and not for a horde of hungry, profit-seeking concessionaires. He will find a practical plan that has been worked out by a group of foreign workers and engineers now in Russia, and that has been formally approved by the heads of the Russian Government. He will find a plan that will stimulate the imagination of men of industrial vision, a plan for the first industrial colony in the world, where engineers will find freedom to work out experiments they cannot attempt under the profit-system, and where workers will find that self-government, that sense of social creativeness, that solidarity and equality they have never found anywhere in the history of the world until this present hour.

The plan is to develop Concession Number One offered to world capitalists—the Kuznets Coal and Iron Basin with its two hundred and fifty billion tons of coal, its iron ore, timber and agricultural land, and to operate Nadejdenski Zavod, a complete steel plant in the northeastern Urals, which in pre-war years produced 20 per cent of the total steel and cast iron of the Urals, being the largest producer of charcoal pig iron in the world.

It is an opportunity so large and amazing that it takes the breath away. It is as if one were being asked to be the founder of a New America. And it is a practical project, and can be accomplished if we can find enough American workingmen and engineers who have the intelligence, courage and the heart to be pioneers of this great vision.

Most of the details of the enterprise were worked out in Russia, so that everything as stated in the following pages is authoritative. The application blanks, a copy of which is found within this pamphlet, may be forwarded to the Autonomous Industrial Colony Kuzbas, Room 303, 110 W. 40th Street, New York City, N. Y.

## **WHY FOREIGN WORKERS ARE NEEDED**

The general policy of concessions by the Russian Government is a recognition that Soviet Russia does not possess the material or human forces to operate and extend its present factory equipment, and without a big factory production social reconstruction is impossible.

Soviet Russia offers her industry to the capitalist concessionaire, to world labor, or to both. Proletarians should occupy and use the factories and resources of Russia, which the Russian workers cannot adequately use.

The Soviet Government welcomes such aid as here outlined and promises all possible support to any attempt of labor to develop in Russia modern industry.

The Russian Revolution gave the land to the peasants and the factories to the working man. Thru four years of most terrific struggle these victories have been maintained. This is the great historic fact that keeps the eyes of all workingmen on Russia. For this to occur in a small country would be of tremendous importance, but that on the ruins of autocratic Russia should be constructed and maintained the workers' and peasants' government is beyond the imagination of any one man.

Soviet Russia now controls one-sixth the land mass of the earth. Practically every natural resource and environmental condition is embraced under this control. One hundred and thirty millions of people of the white race of superior physique are now just beginning to realize on the riches which Mother Earth has so long concealed beneath their feet. A newer world than America is at last being opened up to the conquest of industry and science, under the guiding hand of labor.

Land monopoly has been destroyed. Use and occupancy is the sole title to land. The peasants are preparing more land for the plow. But one must remember that agriculture in Russia is very primitive. The three-field system, poor seed, very poor farming implements and a very mediocre grade of live stock, as well as the peasants' lack of knowledge of modern methods, are not the best foundations for successful agriculture. Still, despite the civil war, which killed some seven million adult males of the peasantry and seriously maimed fully as many, as well as reduced the number of livestock to a dangerous minimum, the peasantry of Russia are well satisfied to build on the results of the Revolution.

The industrial workmen started production under revolutionary control, but the demands of the revolution called them from the factories. Some went to the front in charge of the

Red Army and died on the numerous battlefields of the Revolution. Others, with the formation of the government of workers and peasants, became administrators of the government. Less conscious workers returned to the villages to till their acreage of free land. These three movements from the factories continued—to the army, to the government and to the villages, until at last the factory had to close down for want of skilled proletarian labor. This labor, because of the backwardness of Russian industry and the enormous losses of the Red Army, could not be replaced. Tens of thousands of class conscious Russian workers died on the battlefields against Kerensky, Kolchak, Korniloff, Denikin, Wrangel, etc. Today their machines are idle.

If the world and Russia are to realize at once on the industrial revolution they died to establish, and maintain for the workers of the world, vigilant labor from the world movement must replace these workmen martyrs of Russia by industrially qualified and physically fit individuals, selected and organized to open the Russian factories under the control of labor.

Any attempt to open the factories of Russia on a basis of full production will make it necessary to import not only the technicians, superintendents, foremen and overhead organization, but also millwrights, machinists, electricians, boilermakers, blacksmiths and plumbers. Skilled labor will be one of the problems that any concessionaire will have to solve by importing such labor from the unemployment markets of America, England and Germany. Unskilled labor Russia has in abundance, but, because of her free land, the wages must necessarily be above what the peasant laborer can earn in his village.

Russia never had enough overhead industrial organization. Her engineers went to the technical school for a career, just as their brothers went to the army, navy, or government posts for a career. Many practical engineers were imported from outside, together with the modern plants of the International Harvester Co., the Singer Company and others. These men of course left Russia with the coming of the Revolution.

Russia never had enough boilermakers, blacksmiths, millwrights, machinists, electricians and such skilled labor; her

chief importations were machinery and other products of such labor. Her big machine industry was just developing and was growing so rapidly that skilled workmen were also imported.

Russia never had enough coal miners. With enormous resources in coal, she imported it from England and Germany for use in the factories. Before 1914 she imported 70 per cent of all coal consumed. Since the conclusion of the trade agreement with England, Soviet Russia has resumed the importation of coal from England, and even from America. Three hundred thousand tons is the minimum estimate necessary for Petrograd in 1922.

Now that Soviet Russia will again take her place in international relations, trade will slowly revive. All the world looks to Russia as a market for machine products. Russia has always produced a surplus of raw products and food and received importations of manufactured products. But Russia must develop her factories, and in time manufacture for herself, using her raw materials and food at home. Ninety per cent of Russia's present equipment is being inadequately used. While there is a shortage of material or liquid capital, yet the handicap of Russian industrial life is largely a lack of skilled labor.

### THE IDEA "KUZBAS"

A few workers in Russia, in the spring of 1921, decided that by the utilization of the returning Russian Americans and by including in this immigration skilled workmen, foremen and engineers, an organization could be created that in a suitable location could develop a unit of that modern machine industry for which America is famous.

Thus S. J. Rutgers, a Dutch engineer, and H. S. Calvert, an American expert in machine production, prepared a thesis for the Soviet Government, with a request that its general principles be accepted and an expedition be authorized to make a survey of the possibilities for utilizing some of the idle factories and resources of Soviet Russia by foreign labor.

Mines and factories in the vicinity of Moscow, Petrograd and other large cities were not considered suitable for the development of big machine industry because of the lack of fuel

and food, and because of social conflicts and the difficulty of securing a regular supply of raw materials. The extremely valuable Donets Basin had suffered attacks from counter-revolutionary bands; its mines had been flooded and electrical stations wrecked. Food is also scarce in the Donets and banditism is a general menace. Conditions for the development of modern industry require peace, security and general social efficiency as a basis for successful operation.

An expedition was authorized June 22 and a survey was made of the Kuznets Basin in Siberia (Kuzbas is the contraction of Kuznets Basin), and of certain properties in the metallurgical region of the Ural Mountains.

As a result of the expedition, arrangements were made in which the Kuznets Coal and Iron Basin, situated 100 miles south of the city of Tomsk, and Nadejdenski Zavod, the best steel plant in the Ural Mountains, were taken off the concession market and reserved for operation by foreign labor, especially American labor.

### **A PLACE FOR EVERYBODY**

Only a few Americans, including two engineers, are working this winter in Kuznets Basin repairing houses, securing information and making the arrangements for the arrival of other workers from America, and only a small group is at the Nadejdenski steel plant. An organization of six thousand men from America, including engineers, executives and skilled workmen, must be created to carry out the full first year's production program.

### **KUZNETS BASIN**

The Kuznets Basin lies halfway between Moscow and Vladivostok, just south of Tomsk. It is bounded by the Trans-Siberian Railroad on the North, the Altai foothills on the East, the Ob River on the West, and extends 70 miles south of Kuznets through the Telbes iron deposits, which lie along the Kuznets Altai and Salair Mountain chain. Around Telbes the iron deposits are particularly rich, being over 75 per cent iron—large deposits of from 45 per cent to 65 per cent ore are easily

accessible. The coal deposits extend from the Trans-Siberian Railroad to just south of the town of Kuznets, covering an area of 9,000 square miles—150 miles north and south, and 60 miles east and west. The River Tom, a tributary of the Ob, drains the Basin and flows through the deposits. About two-thirds of the coal lies on the west side of the river. According to Professor Lootugin, a Russian geologist, who also made a survey of the Donets Coal Basin, Kuznets Basin possesses two hundred and fifty billion tons of coal, or four times the coal of the Donets Basin, and more than the total coal reserves of the British Isles.

Kuznets Basin is a pioneering region, in which some of the development work has been done. Two large coal mines, Kemerovo and Kalchugina, have machinery installed. Housing has been provided for several thousand people, with electric lights and running water. The Kuznets railroad has been built from Urga, on the Trans-Siberian Railroad, south 200 miles thru the coal field, and the railroad grade has been extended another 70 miles south into the heart of the Telbes iron ore, where the earthwork and foundation of a steel plant, on similar design of the Gary, Indiana, plant, has been constructed. For the first 100 miles south over the coal field, the Kuznets Branch Railroad is ballasted, and has numerous sidetracks, and well-built stations and buildings. The Kuznets Railroad is of the same gauge and steel as the Trans-Siberian.

The Basin was developed upon lease from the royal family. The development started about 1913 and continued under one engineering organization. During the war, a four-story steel reinforced chemical plant for the production of coke and by-products, such as benzol, coal tar and other chemicals, was constructed at Kemerovo. It still requires heavy castings and fire brick, but will be operated in the fall of 1922. At GuriEFF, a thirty ton blast furnace, foundry and machine shop will supply immediate repairs and extensions.

## KEMEROVO

Kemerovo is a little industrial Gary in Kuznets Basin in the heart of Siberia. The American workers will take over this town of 11,000 population, together with all the auxiliary in-

dustries. The mining part of the town is on the east bank of the River Tom, and the industrial part connected with the chemical plant on the west bank. The town is well laid out, with broad streets and attractive double log bungalows of three or four rooms, with fenced yards. The houses are lighted with electricity and many have running water. The town and all buildings have been built since 1913, and five hundred workers can be added to the existing population with but slight repairs to existing buildings. As the immigrant workers arrive, Russian peasant labor to the amount of about half the population of the town will return to the village, since this peasant labor has been mobilized for work in the mines.

The following municipal industries will be taken over in Kemerovo and operated by the foreign workers' unit:

A well built hospital, situated in the forest of pine that comes down to the edge of the city, now employing a medical staff of 61, including two doctors, a surgeon, two dentists and two midwives.

A bakeshop now employing four bakers. (Siberia uses white flour.)

A hotel dining room accommodating 250 and employing ten persons.

Three bath houses, one for miners, one for the general public, and one for old people. Each bath house has an attendant.

Two Swedish sawmills of one frame each, which are now in operation—one on each side of the river.

A blacksmith shop with small equipment and nine forges in good condition.

Two theatres of 1,000 capacity each, and equipped with moving picture machinery, as well as a stage and scenery for the production of plays.

A grammar school with 25 teachers and 500 school children.

Three small brick plants (with no machinery) where twenty thousand brick are made by 20 workers during the summer months.

A barber shop with two barbers.

One sewing and tailor shop with two tailors.

A shoe repair shop with 22 shoe-makers.

A five bench carpenter shop.

The American unit will also operate a stone quarry near Kemerovo, where good building stone can be obtained. A sand pit, which is already being operated, has a railroad connecting it with the town. Limestone is found ten miles south on the River Tom, where 150 tons are produced each summer by a force of ten men. The surplus lime not used by the municipal industries of Kemerovo is exchanged with the peasants for their products.

### KEMEROVO COAL MINE

Around the operation of the Kemerovo coal mine will center the first year's activity of the foreign workers. An endeavor will be made to operate this mine by building around it a social organization so that the workers can produce as efficiently as possible.

The Kemerovo mine has four seams lying on an inclination of fifty degrees, and running at right angles to the Tom River in the bluffs that rise 225 feet from the east bank. The seams are "in the same measure" with approximately two hundred feet of waste between each seam. The four seams are respectively about 18, 7, 11, and 9 feet thick.

Double tracked drifts have been run in from the river on each seam, one of which is closed. The coal has been taken out for about one-fourth mile back from the river. Three perpendicular shafts and one inclined shaft have simple cable hoists with steam power installed. The last shaft, a circular concrete shaft, is one and one-half mile back from the river. It is just being completed. The underground workings extend from the bottom of this shaft thru the drifts out to the river, with numerous ventilation shafts leading up thru the coal to the surface. Only a small amount of coal has been taken out. The concrete shaft is 212 feet deep and is planned to work all four seams.

The method of exploitation is to work only the coal above the drifts. Coal raised by the shafts is dumped into the cable tramway buckets and taken across the River Tom to the chemical plant. That handled by drifts is taken away by barges.

Four million poods (60,000 tons) was the 1921 production with 286 Russian miners underground. The equipment could produce many times this quantity.

Five hundred miners are needed for the Kemerovo mine. These men, under average conditions, should produce 45,000,000 poods, or ten times the present production. With the help of Russian labor, the program of the American workers should obtain, with the existing equipment, one million tons in 1922 from Kemerovo and adjoining mines along the river.

### KEMEROVO CHEMICAL PLANT

A chemical plant has been 80% completed in Kemerovo to produce coke and by-products, benzol, coal tar and other chemicals. The buildings are practically completed except for a shortage of window glass. The design is on the plans drawn by a Belgium chemical engineer, who also designed two similar plants in the Donets Basin. The buildings are four story steel concrete and stone of modern construction with numerous windows. The plant covers about two city blocks, the connections between buildings being by tunnel. The capacity is about nine million poods of coke yearly, i. e., 150,000 tons. One of the two batteries of ovens is practically completed. Fire brick for the other will be supplied from the Ural or produced at Nadejdenki. Some heavy castings and boilerwork are still to be completed. A few boiler makers and machinists could complete the plant in three months, as most of the materials necessary are at hand.

The driving motor central station is 1000KW. A second station of similar capacity is used at present for the mines. Another similar unit has been partly completed.

Three acid reservoirs, ten benzol reservoirs, and eight tar reservoirs are installed. In fact, a good organization could run the plant at one half capacity in a couple of months.

Two boiler houses with high brick stacks completed are nearly ready for operation—also six condensers for clearing gases and tar. The ammonia unit is short heavy castings and some boilerwork. Of the rectification unit, very little has been built. Other completed projects include mechanical workshops

with heavy shears, punches and lathes; a foundry, water tower and column for cooling water. The plant was built in 1917.

The cableway to transport coal from the opposite side of the River Tom has a capacity of twenty million poods yearly, or one-third million tons, working 360 days of 12 hours. The present ten horse power motors should be thirty-five to forty horse power. This cable is six years old, but in good condition. The leading cable is  $\frac{5}{8}$ " and hang cable 2". It is 5 versts long.

Two hundred workers, including technicians and executives, are needed for the chemical plant.

### **TRUCK GARDEN AND DAIRY FARM**

Just on the edge of Kemerovo will be operated a 2,500 acre dairy farm and truck garden for use of the Kemerovo workers.

### **GURIEFF ZAVOD**

The Gurieff blast furnace, located on an eight mile branch of the Kuznets Railroad, 130 miles south of Urga, will supply immediate repairs and extensions. Iron has been worked here for many years. Behind the old stone buildings looms Jenghis Khan and his Mongol and Tartar bands, for Kuznets in Russian means blacksmith, and in such places as Gurieff iron has been smelted for centuries. The iron and coal lie side by side.

Years ago Gurieff had an old water power rolling mill. The ruins of mighty timbers and the great steel rolls, below the old stone wall excite the imagination. The dam broke some two years ago, releasing the river. At present the power in Gurieff is steam, altho the stream must be harnessed by renewing the dam at some future time. The buildings, tho old, are extensive and in good condition, including the houses for workers. The present blast furnace is designed to use charcoal, altho coke can be used successfully. Four thousand poods (sixty-five tons) of pig iron have been produced per month. The iron ore is eight miles from the factory and is transported by horses. It is possible to produce two thousand poods (30 tons) daily. There is a stock of fifteen thousand poods (250 tons) of charcoal at the plant.

The blast furnace was built during the war to construct

heavy castings for the chemical plant and make immediate repairs for the railroad and mines. The diameter of the furnace is 1.30 meters at the bottom and 2.75 meters at the middle; the height is 11 meters, and contents 42 cubic meters. It is in very good condition, and has a possible capacity of 13,000 tons, 800,000 poods yearly by working twenty-four hours. A foundry cupola, brass foundry and machine shop with lathes for heavy work, make possible immediate job work repairs.

A rolling mill for Gurieff has been brought as far as Kemerovo from the Ural by water. There are also large stocks of bars of steel of different shapes.

Forty foundrymen, twenty lathemen, technicians and executives are needed.

### CEMENT PLANT

The cement plant is located on the Trans-Siberian Railroad where it crosses the River Tom. The capacity of the plant is 100,000 poods (1,600 tons), although only 56,000 poods were produced in 1920 and 23,000 poods in 1921. The installation is two rotary kilns, with grinders, etc. The buildings are in good condition.

Repairs are necessary to the stave mills to produce ten pood cement barrels. New saws are needed, and new balls for the grinders at once. Some of the gearing is also in need of replacement. Pumps are required for the boilers.

One quarry is two versts from the plant and one five versts. The five verst quarry will in future be the source of supply. A five verst overhead tramway is projected as a necessary installation.

For the stone quarry, twenty horse power compressor and engine, boiler and two Burley machines, with two Jack-hammers or such quarrying machinery is desirable. Four hundred men and women are working in the cement plant at present. Twenty houses are connected with the plant and a soldiers' barracks in good condition can serve as additional housing for the present. About fifty technicians and workers are needed for this plant to operate it at capacity production. A part of the increased production will be at the disposal of the American unit.

## TOMSK

Kuzbas Organization will operate a glass factory, tannery and shoe factory and Hoffman brick kilns in Tomsk.

The city of Tomsk is the capital of the gubernia of Tomsk. It is situated on the River Tom, 27 miles above its confluence with the Ob. The population is 80,000. Tomsk is the largest city in Siberia, and is connected with the Trans-Siberian Railroad by a 54-mile branch line. Its growth was influenced by gold discoveries in the Altai Mountains. Tomsk has large flour mills, and is one of the big river ports on the Ob River system. The best buildings are connected with the University, which was the fourth in Russia. In 1921 there were 6,000 students in attendance. It is the cultural center of Siberia. There are archaeological, ethnological, zoological, mineralogical and botanical museums, a technological institute, cathedral, library, and geographical, medical, musical and other societies.

## GLASS

For fifty years a small glass works has been in operation near Tomsk. Glass sand is found on the railroad near the city limits. Soda is at present produced at Barnaul from three dry lakes, where deposits of over three million tons are found.

From information secured at the University of Tomsk, the raw material is  $\text{Na}_2\text{SO}_4$ , 95 per cent to 98 per cent pure after distillation: Barnaul produces about seven tons of soda monthly at present. The very primitive glass works employ seven glass blowers. American machinery for manufacture of window glass and glass jars will be bought and with the necessary personnel, estimated at a minimum of fifty workers and specialists, will add a very necessary industry and product to Siberian life.

## BRICK AND POTTERY

Very good clay is found at Tomsk. The red clay suitable for building brick lies on the surface to a depth of three meters. A much better white clay, two meters thick, is found at the river's edge and at places under the red. Sand is plentiful and the red clay has about the right amount. A good white sand is abundant around the new Hoffman brick kilns near the city limits. They

have simple mechanical equipment, mixers, pressers, elevators, dry rooms, and trackage connecting the red and white clay and sand. The capacity of the new Hoffman kilns is 500,000 brick monthly. These kilns as well as several older Hoffman kilns are not in operation at present. Presses for roofing tiles must be added to the plant equipment of the new Hoffman kilns which the American workers will operate. Tomsk University gave us the information that the white clay is suitable for pottery making.

### **TANNERY**

The tannery at Tomsk has several good brick buildings, a good brick stack, two Birmingham pumps of 44 H. P. and 22 H. P., and a good boiler, that is cleaned every two weeks. The capacity of the plant is 4000 hides per month, of which 3000 was the production before the war. It now tans 1000 per month with 45 workers and the 8-hour day. There are four big circular washers and plenty of large circular wooden vats. The hides are fleshed by hand and the by-products used in a glue factory. There is a good roller hide presser and a trimmer. The plant tans cow, goat and sheep hides and the supply of skins is inexhaustible. The production process is poorly arranged, but could be rearranged easily. Everything is in good order. The present manager was the former owner. He complains that the fir bark used is unsatisfactory and that the willow bark which is plentiful along the river should be secured. Fifty workers are needed for the tannery.

### **SHOE FACTORY**

In a fine brick building with concrete floors in Tomsk is a shoe factory equipped with eight Singer machines for uppers and two each of the other more important machines. The machinery is of American manufacture and is in good shape. Supplies of nails and thread are needed. Fifty workers and executives are needed to operate this plant.

### **TIMBER**

All the timber along the River Tom is especially suitable for mining props, and some is good building timber. A small forest is only 15 miles from Kemerovo, altho the chief source of supply is much farther up the Tom near Krepivino on the small tributaries

that flow into the Tom, especially from the east. These small tributaries are shallow and it is with difficulty that logs can be moved down them except in the spring for a month or so of high water. The peasants bind the logs in rafts (which is slow work at best). They transport to the river with horses. Farther south, toward Kuznets, the timber becomes more plentiful, but it is still small in size, 12"-14"-16". The forest runs 60 per cent fir, 25 per cent aspen, the remainder birch. Some very good twelve inch birch is found in some localities.

Fifty miles above Kuznets on the Tom and Kondoma rivers, yellow pine and spruce of good size and quantity are plentiful. The pine runs up to 36" in diameter, altho 30" pine only is found in sufficient quantity for exploitation. Near Telbas there are some 15 or 20 empty houses which are suitable for lumber workers. From Telbas the forest stretches unbroken south and east. Timber may be transported on the Tom River from May until October.

The R. S. F. S. R. will cut and raft to Kemerovo, 60,000 logs for the use of Kuzbas in the spring of 1922. Two hundred lumberjacks and fifty sawmill workers will be needed this spring.

## AGRICULTURE

A big machine farm will be organized. Ten thousand desiatins (25,000 acres) of land in the Kuznets Basin have been secured for the spring. Steam and gas tractors, gang plows, threshers, and mowers will be bought in America and taken with the unit. Two thousand head of dairy cattle and bulls, 500 head of horses, bees, swine, geese and ducks will be supplied by the Siberian Revolutionary Committee. Fine breeding stocks of rabbits, poultry, swine and goats will, if possible, be taken from America, as well as seeds, cuttings of berries and hardy fruit trees. The farm will organize a modern truck garden. This farm should interest the best American farmers and be not only a producer of food but a model of scientific agriculture.

## NADEJDENSKI ZAVOD

The Nadejdenski steel plant is in the most northeastern section of the Ural Mountains and is almost an isolated industrial

empire. This plant will be taken over to hasten the development of the Kuznets Basin. The region is connected by water transportation via the Ob River with Siberia and the Kuznets Basin, and by rail via Ekaterinburg with both European Russia and Siberia.

The Nadejdenski steel plant is not only a well equipped modern plant, but combines efficiently metal mining, coal mining, timber exploitation, charcoal burning and the operation of a three hundred mile narrow gauge railroad with a locomotive shop which has built forty-five narrow gauge locomotives; also lime, brick and fire brick production; machine and machine part production; foundry and lathes for production of fifty ton rolling mill rolls, and a power plant of 11,000 KW. All the above will supply **seven blast furnaces** of 100 ton daily capacity each with a total yearly capacity of 10,000,000 poods of highest grade charcoal pig iron; **nine Martin ovens** of a total yearly capacity of 13,000,000 poods of charcoal pig iron; an **automatic rolling mill** with its own power plant of 10,000 KW., with a yearly capacity of 7,500,000 poods of heavy railroad steel, and a **sheet or tin plate mill** of 3,000,000 poods yearly capacity. Minor repairs to run all this equipment at full production can be made at the plant. At present over fifty per cent is ready to run, except for a shortage of skilled labor.

Just to the side of the steel plant stand several massive steel reinforced buildings, constructed during the war to manufacture shells on quantity production. These buildings, power plant, foundry, forge shop, heat treat and machine shop, will have machinery installed for the quantity production of agricultural implements, as well as job work for the mines. Three hundred American lathes and forging presses have been installed in the machine shop on a wood block floor. There is plenty of pigs, blooms and form iron to start production at once on a sufficiently large scale.

In the region covered by the plant, are six million acres of some of the best timber in Russia. It ranges from mining props of fir and birch to excellent sawmill timber, three, four or even five feet in diameter. The better timber is sawed in a Swedish sawmill of seven frames equipped with planers, tongue and groove machines, etc. The remainder is burned in ovens to produce charcoal for the blast furnaces. The timber is brought to the plant by the narrow gauge railroad that extends 200 miles into the forest, and is also floated down by the river and loaded into cars by an ingenious mechanical loader.

One thousand American lumberjacks are needed in the six million acres of forest to supply the timber needed for charcoal and the sawmill.

The Nadjedenski plant also includes a copper mine with Ingersol-Rand equipment, a small old smelter still in running order with 13,000 tons of high grade ore at the smelter; and a ferro-manganese mine and plant for grinding ochre paint. Riches of quartz, placer gold and platinum in the river sand are undeveloped resources. Moose and elk are plentiful.

Iron is the basis of Nadejdenski Zavod. It is mined by steam shovel from the open pits. The ore is of highest quality, both magnetic and oxidized, running about 65 per cent pure iron with only a trace of phosphorus or sulphur. It is smelted with wood charcoal and thus maintains its high quality.

Two seams of Brown coal, each 16 feet thick on an inclination of about 5° are mined for steam and gas coal. A small briquette plant is connected with the smelter. The coal is not good enough for coke. It has been mined by using four steam shovels and trains, 1600 men digging 5,681,740 poods the first seven months of 1921, which is about nine ton per man, average, per month. This method of removing the earth to reach the coal is excusable, since the peasant knows nothing of mine timbering, but miners are required to release the peasant for his agricultural labor.

A kiln for building brick, with a capacity of 250,000 brick per month has simple machinery and dry rooms installed. A very fine fire brick kiln has all the necessary crushing and mixing machinery. The fire brick are of excellent quality and used to line the blast furnaces.

The iron ore, charcoal and lime charge the blast furnaces mechanically. The molten iron goes in ladles through a tunnel to the Martin ovens. Four Martins are of 50 tons each, five of thirty ton capacity. Massive electric cranes are well placed throughout the plant. The steel buildings are very large with ample space for each operation. Plenty of railroad trackage connects all points of the plant.

The power plant of 11,000 KW. includes one 2700 Gas Electric,

two 500 electric and one 800 electric; one 5000 steam turbine, and one 4000 KW. steam turbine. The power house is in good condition. The 10,000 KW. unit that operates the automatic rolling mill is made up of two 5000 KW. gas turbines. The wire mill needs drawing boards. The steel work is up for a new building for the wire mill. The heavy duty machine shop contains sufficient machinery to handle the manufacture of locomotives.

Of all this excellent equipment, Soviet Russia fired in 1921 only one of the seven blast furnaces and one of the nine Martin ovens, and rolled some railroad rails, using the automatic rolling mill at but one-tenth capacity. Wood is being cut this winter for charcoal. An endeavor will be made by the American workers to run this equipment at least at 20 per cent capacity in 1922.

Grain warehouses, a flour mill and bakeries are operated by the plant, as well as other small municipal industries.

Nadejdenski Zavod is to be the machine shop of Kuzbas. It will be operated to manufacture metal products for repairs and extensions to hasten the development of the Kuznets Basin properties. Additional machinery, now standing idle in Moscow and Petrograd warehouses and factories, will be installed in the vacant buildings to manufacture on quantity production agricultural machinery for exchange with the peasants and for use of the Kuzbas agricultural industry.

A minimum of two thousand metal workers and one thousand timber workers are needed to commence the operation and prepare the way for other fellow workers from America.

## SIBERIA

Siberia has more standing timber than any other country. There is a tremendous amount of unexploited mineral wealth, including gold, copper, zinc, silver, lead and graphite, as well as immense areas of unexploited coal and iron deposits. It has quantities of wild game and large rivers stocked with fish, particularly salmon and sturgeon.

Siberia has about 8,000,000 population, of which over 90 per cent are peasants. The peasant population is along the Trans-Siberian railroad on the black earth belt that stretches from the

Ural mountains eastward to beyond the Ob river and up the slopes of the Altai mountains.

This black earth belt is level or gently broken by streams and watercourses here and there. It is meadow land with clumps and forests of birch and pine. Native grasses, red and white clover, wild timothy, wild rye and oats grow in the meadows, and wild flowers raise their heads among the weeds and over the wild strawberry plants that hug the soil everywhere. Blackberries, raspberries, gooseberries and mushrooms abound in the forests of birch and pine. Much could be done by modern berry culture. The black loam is from one to four feet thick with a gray sandy clay subsoil.

The villages have large herds of cattle and horses, and some sheep and swine. Each herd of cattle is accompanied over the meadows by herdsmen as the cultivated fields are unfenced. There is a whole horizon as pasture for each herd of village cattle and vast spaces between villages are ungrazed. Only a small part of the fine native hay is cut. Considering the primitive tools used one wonders how even so much is cut and stacked. Men, women and children work from early till late at the task and the results carry the livestock thru the long winter.

Around Kemerovo and Kalchugina the land is excellent for cultivation with steam tractors, gang plows and the profitable use of modern agricultural methods. Further south along the railroad and river the country is more broken and forested. In Kuzbas the peasants raise considerable crops of wheat, oats, rye and potatoes, and have a surplus for exchange after paying the tax in kind to the government. The peasants' statement as to yield of wheat would mean about thirty-two bushels per acre, but observation of the growing fields did not bear out this calculation. Fifteen bushels would seem to be about the average yield of the best fields. Still, the black sandy loam, rich in humus, should, if given clean seed and a proper seed bed, excell the peasants' estimate. The peasants plow for wheat on the first of May and seed at once. The wheat is harvested in August and September. Rye is sown about the first of September and is harvested the next summer a few days before the wheat harvest. Potatoes are grown in small patches and yield very well. They are planted the first of May and dug in August. Growing cabbage, carrots and turnips, as well as tobacco were observed by our party in July. Beans and peas are suc-

cessful garden crops. Sugar beets have been raised with a view of the sugar industry successfully, but machinery is lacking at present.

There is a good apple and plum orchard near Omsk and a good apple orchard near Tomsk, despite the common belief that fruit cannot be raised successfully in Siberia.

The Siberian bees were brought in by gradual movement of the population eastward and have become gradually accustomed to the long Siberian winters. Kuznets Basin produces an excess of honey.

The possibilities of scientific machine agriculture are unlimited. Siberia has a great future, which only waits for the men who know how to realize on its possibilities.

The five governments of Irkutsk, Tomsk, Altaisk, Yenesisk, and Omsk, from figures published by the agricultural department of Siberia, had in the spring of 1921:

4,059,000 head of Sheep,	67% of the number in 1917
3,560,000 head of Cattle,	65% of the number in 1917
1,534,000 head of Swine,	70% of the number in 1917
3,800,663 head of Horses,	97% of the number in 1917

The year of 1921 was a profitable one for the peasantry of Siberia, yielding big crops of grain and hay.

The Trans-Siberian Railroad is double tracked and in excellent condition through this meadow acreage 1000 by 300 miles of black land on which most of the livestock is grazed.

## CLIMATE

Kuznets Basin is just on the opposite side of the globe from Winnipeg, Canada, in the same latitude, and has generally the same climatic conditions. The average January temperature is zero Fahrenheit, or 18° below, Centigrade. The winters are very cold, but dry. The first snow comes the first of October and is soon followed by winter. The snowfall during October is followed by bright sunny days all winter long, which make snow glasses desirable for those who spend much time out of doors. A Swiss who has been seven years in Siberia and is at present connected with

the Tomsk University as Professor of English language says that "Winter is the best time of year."

Spring comes in Kuzbas suddenly the latter part of April. One day the frozen river will carry the weight of horse and cart—three days later the river is free of ice. Surplus water runs off quickly as the snow melts, so there is little slush.

The summers are delightful with the greenest possible meadows.

The climate at Nadejdenski is similar to that of the Kuznets Easin, but generally has a heavier fall of snow.

### **SIBERIAN GOVERNMENT**

The administration includes the provinces of Tobolsk, Tomsk, Yeneseisk, Irkutsk, Yakutsk with Kamchatka. Siberia is governed by Soviets and elects its quota of delegates to the Moscow All-Russian Soviet. The Siberian Revolutionary Committee, with headquarters at Novo Nikolaevsk, is a body of nine men appointed by Moscow for Siberia. With a small administrative staff, a few peasant soldiers, a wireless and railway telegraph, they govern a country as large as the United States.

### **TRANSPORTATION**

The Ob River system possesses navigable water for more than six thousand miles, is open for navigation four months each year, and is connected with the outside world thru the Kara Sea and the Arctic Ocean (open for one month yearly). The Yeneisi River system comprises four thousand miles of navigable waterway, and is connected by the Ket Canal for small boats with the Ob River system. Eighty per cent of the pre-war tugs, steamers, dredges and barges are in good condition.

The Trans-Siberian Railway extends over 5,000 miles from the Gulf of Finland thru N. Asia to Vladivostok in the Sea of Japan. The roadbed is in good condition and ballasted most of the way. There are two single track railroads connecting Omsk and Moscow, one via Tuimen and a southern route via Chelyabinsk; and one double track Chita to Omsk. There is also single track Chita to Vladivostok and another thru Manchuria. Some locomotives are idle for shortage of fuel and 400 are burn-

ing wood. Passenger trains Moscow to Novo Nikolaevsk pulling eleven coaches five days, scheduled three times weekly, burn coal and oil. Freight trains take two weeks for the journey.

The Kuznets railroad runs south from Urga on the Trans-Siberian, 200 miles to Kuznets. The east branch of the Kuznets Railroad branches fifty miles south of Urga and runs 25 miles to Kemerovo on the River Tom. A west branch leaves the Kuznets Railroad 125 miles south of Urga and runs 8 miles to the Gurieff blast furnace. The railroad bed is extended 70 miles south of Kuznets to Telbas, the center of the iron deposits.

The distance between various properties is as follows:

Kemerovo to Kuznets, 175 miles.

Kemerovo to Kalchugina, 75 miles.

Kemerovo to Gurieff, 125 miles.

Kemerovo to Tomsk, 200 miles.

Novo Nikolaevsk to Urga, 100 miles.

Urga Junction to Kuznets, 200 miles.

Urga Junction to Kalchugina, 100 miles on Kuznets Ry.

Urga Junction to Kemerovo, south 50 miles on Kuznets Ry. and east 25 miles on branch line.

Urga Junction to Gurieff, 130 miles on Kuznets Ry. and 8 miles west on branch line.

## WOMEN AND CHILDREN

The region and properties have been selected with a view of securing as favorable conditions as possible. For the same reason, only a small number of women and children should accompany the first groups. But strong, healthy women who are accustomed to outdoor life can be taken care of by the organization. Some women and children are desirable to maintain the proper home life and home atmosphere. The engineers and skilled workers will in many cases be accompanied by their families. The estimate for Kemerovo is 2,800 workers and not over 1,200 women and children; for the north eastern Ural 3,000 workers and not over 1,500 women and children. Suitable schools will be provided for the children, and work in the homes or industrial work provided for the women. Single women will also be considered, providing they are also industrially qualified, physically fit and politically reliable.

## FOOD

The first big question in Russia is food, so any industry must solve the food problem. Kuzbas (Kuznets Basin Organization) will solve it in many ways. One hundred dollars' worth of food must be taken for each immigrant worker. This will provide sugar, coffee, chocolate, tea, dried fruits, rice, beans and such food as is not available in Russia for mass distribution. The Russian Government will supply the food as to other industries on the basis of production, i. e. in exchange for coal. This will insure meat and grain. Kuzbas will manufacture articles of wood and metal and exchange with the peasantry for food. Logs can be cut, rafted down to the peasant villages and also exchanged for farm products. Sawmills will be operated and sawed timber is in great demand. (Doors, window frames and glass are absolutely unobtainable at present.) Cast iron stove tops, frames and doors can be made to set in the brick work of the Russian peasants' stoves. Also cast iron wagon hubs and axles can be made to replace the wooden axles and hubs of the peasant carts.

## HOUSING

Housing will be the utilization of existing houses as mentioned in the description of each property, and the development of a modern construction unit, using the raw materials, lime, cement, brick, timber, glass, etc., to make finished buildings.

## CLOTHING

Clothing will be supplied through importation with the immigrant, and through exchange with the Soviet Government, as well as by gradual extension thru manufacture of shoes, furs, etc. Each worker should take as much clothing as possible.

## WAGES

The workers will receive from their production a satisfactory standard of living, which will include a yearly bonus. The remaining product (except the customary Soviet taxes), will be used to extend the industrial equipment of the enterprise.

## OPERATION

All the properties will be operated as a state industry, as an economic unit under the management of the organization of foreign workers. The organization will function on the basis of a special statute approved by the Council of Labor and Defense. All the properties will be operated by Kuzbas Organization as one property; with one board of managers and one technical staff with the proper subdivisions.

## DISCIPLINE

Responsibility for the progress of all work rests with the technical staff who are responsible only to the Board of Management. The Board of Management are responsible both to the workers and to the R. S. F. S. R. The work discipline and methods will be absolutely determined by the technical staff or its proper subdivisions, superintendents, foremen, etc.

Labor organized in industrial unions will participate in an advisory capacity, the spirit of Kuzbas Organization being that solidarity shall exist between all parts.

Individuals out of place will be redistributed so as to eliminate or avoid friction. Absolute inability to fit in will result in elimination from the organization.

## CAPITAL

Three hundred dollars per worker must be raised; to cover \$100 for transportation, \$100 for purchase of food, and \$100 for small tools. Additional money must be raised for auxiliary supply of clothing, medical supplies, books and other social needs. An endeavor will be made to get the worker to supply this capital as far as possible, thus eliminating such exploitation as its repayment to others would require.

Against that part of the production at the disposal of Kuzbas Organization for extension of the enterprises may be issued notes or promises to repay all sums of money contributed by individual workers or sympathizers. No rights of ownership in the natural resources or developed property will be issued in any form. The Russian Socialist Federated Soviet Republic is under no obligation to repay any obligation to be incurred by the Kuzbas Organization.

## THE PRODUCTS OF KUZBAS

The colony constitutes a Soviet State enterprise, whose entire output belongs to the R. S. F. S. R.

Everyone is confident that not only can Kuzbas Organization sustain itself, but also create a big surplus as a state industry. Kuzbas will pay the customary state taxes in products, especially coal. These taxes are at present very low and must be so, since industries are operating at about 10 per cent efficiency.

To guarantee a satisfactory standard of living and extension of the enterprise, the Soviet Government offers Kuzbas the following:

The total product of the agricultural and building industries is at the disposal of Kuzbas Organization, less the usual taxes.

In regard to all other industries: Kuzbas Organization will turn over to the Soviet Government the equivalent of the production secured by the Soviet Government in 1921 (which was approximately 10 per cent of total capacity); also 50 per cent of all production over that of 1921. For all products turned over to the Soviet Government, a credit will be given and an equivalent in other commodities received thru exchange on a commercial basis. The equivalent received and the remaining production is at the disposal of the Kuzbas Organization for individual consumption or the expansion of the enterprise. Products at the disposal of Kuzbas can be exchanged with the peasants or others. Part of the products will be used for a satisfactory standard of living; the remainder for the extension of industrial equipment to create a big machine industry. The amount reserved for extension of the whole organization will be determined by the unit as production justifies it.

### “SATISFACTORY STANDARD OF LIVING”

What is meant by a satisfactory standard of living will be determined by the board of managers, who are responsible both to the workers and to the Soviet Government. As a minimum, it is a standard based on productive efficiency. For the first two years each worker will put his labor into Kuzbas. On the basis of production a yearly bonus will be declared and placed to the individual credit of each worker. This bonus will consider the

services rendered, hardships endured, the future prospects of Kuzbas, and what a similar amount of industry would return the worker in the United States, in the form of savings. It will take longer than two years for Kuzbas to gather full production momentum, yet two years will mark some progress.

### **KUZBAS WILL NOT ISSUE SHARES OF STOCK**

Kuzbas Organization will produce for use. The individual worker receives for individual consumption a satisfactory standard of living. His surplus product will be used for the extension of the enterprises of Kuzbas except the payment of the customary Soviet taxes. The increasing efficiency of the organization and greater mechanical installation results in a greater productivity. This greater productivity remains a social possession, as no stocks or shares have been issued. Thus a productive organization is created that can give the worker "the full product of his labor" and let that labor be performed by the machine to an ever-increasing amount.

### **MEN AND THE FUTURE**

Under the imperative urge of modern industrialism, Siberia will be explored, surveyed and peopled. An organization with courage, sociability and technical fitness can develop Kuznets Basin in a few years so that its highly tempered industry will feed a new life, a new culture. But it must be an organization that can pioneer, that can stand hunger, cold and setbacks if they come. It must have full chested men, open air men; men who can do things, while they get their dinner from the river and snap it on the wing; men who can stand lonely nights on the edge of the earth and do it willingly because of the big thing that stands a beacon light before them. Men who can be shown—who can be told—who can teach. Men who can spread their genius and capacity over a country that is wide enough and big enough for the widest and biggest. Out of such men can be built an organization to which the world will beat a pathway, "Kuzbas."

### **WORKERS NEEDED FOR KEMEROVO AND TOMSK**

Agricultural workers for ten thousand dessiatins (25,000 acres) to use steam tractors, gang plows, mowing machines, thresh-

ing machinery—for a modern industrial grain farm—truck gardening, dairy and poultry farm.....	500
Lumber jacks for timber exploitation in Kuznets Basin.....	200
Men to operate two Swedish sawmills and one modern American sawmill in Kemerovo .....	50

General construction workers as follows:

For the exploitation of lime .....	50
Cement .....	50
Glass .....	50
Brick .....	50
Carpenters, 150, making a total of.....	350
Social service workers, doctors, dentists, teachers, etc.....	50
Railroad construction workers to operate one work train, fresco gang, earthworks and bridges, etc.....	400
Men for coal barge building, etc., for water transport.....	100
Metal and machinery workers to operate a 30-ton blast furnace, a small foundry machine shop, millwrights, electricians.....	350
Coal miners for Kemerovo .....	500
Men for coke and by-products plant .....	200
Men for leather and shoe factory.....	100

This makes up a total of 2,800 workers, and includes the overhead, technical, personnel, and also such workers as cooks, bakers, waiters, laundrymen, tailors, etc., necessary to maintain such efficient social standards as would result in average American efficiency for the enterprises. (Accommodation has been made for women and children not to exceed 1,200.)

### WORKERS NEEDED FOR NADEJDENSKI ZAVOD

Timber workers for operation of one Swedish sawmill with seven frames, and planing machinery and work in forests, 1,000.

Men for steel plant and auxiliary industries in Nadejdenski. In connection with the steel plant will be operated a modern foundry and machine shop for mass production under American methods of agricultural implements, a modern tool works and jobbing shop, as well as rolling mill, sheet mill, wire mill, iron ore mines, coal mines, brick kilns, flour mills, etc. 2,000 metal workers are needed for Nadejdenski Zavod. (1,500 women and children can be accommodated.)

## DOCUMENTS

The following is the form of Questionnaire to be filled out by each worker desiring to go to Russia with the Kuzbas Organization:

### QUESTIONNAIRE

**For Applicants Desiring of Participating in the Above Colony**

Please fill in in ink as briefly as possible

1. Name .....
2. Date of Birth .....
3. Country .....
4. City or District .....
5. Occupation .....
6. Are You Married? .....
7. Wife's Occupation .....
8. Names of Children.....Age....Where Born.....  
.....  
.....
9. Do you Read and Write?.....
10. What Languages? .....
11. What languages do you speak? .....
12. Have you the tools of your trade?.....
13. Value? \$.....
14. Can you furnish a Certificate of Physical Fitness?.....
15. Give name of your present firm and time engaged there....  
.....
16. Give two other references of Industrial Qualifications.....  
.....  
.....

17. Give short account of your industrial experience during the past Five Years .....
- .....
- .....
- .....
- .....
- .....
18. Have you acted as Foreman or other Capacity? .....
19. Name of Your Union or Organization .....
20. If approved, on what date will you be ready to sail? .....
- .....
21. Have you Sufficient Warm Clothes of Good Quality necessary for Hard Winter? .....
22. If you have household or other effects to transport, please describe them briefly .....
- .....
23. Are you prepared to submit to the Discipline of the Organization? .....
24. Will you undertake to serve two years with the Organization? .....
25. The Organization does not undertake to return any monies entrusted to it, except under special circumstances, within Two Years. Is that satisfactory to you? .....
26. It will be necessary for you to place your money in the hands of the Organization so that Transportation and Supplies can be secured at Wholesale Prices. Is that satisfactory to you? .....

27. If your Application is approved, how much money can you furnish including fare? .....
28. Have you read and do you thoroughly understand the conditions printed on the other side of this Questionnaire? .....
29. Do you accept them? .....
30. Signature of Applicant.....  
 Address .....

NOTE: Each worker must fill out an individual questionnaire. Groups should submit their questionnaires conjointly, with a brief account of the Group, equipment, finance, occupations, etc. Do NOT leave your job until you hear from the Organization. Do not forward money until arrangements have been made for its handling.

Forward this questionnaire direct, or through your Group representative to the Secretary, Kuzbas, Room 303, 110 W. 40th Street, New York City, N. Y.

The Prospectus can be obtained therefrom at 10 cents per copy.

Extracts from Organization Statute passed by the Soviet of Labor and Defense (the nine economic heads in charge of the Economic Departments of the Council of People's Commissars over which Lenin presides), will show the general form of organization of the Autonomous Industrial Colony "Kuzbas."

Each person going to Russia will be requested to sign a copy of the following Statute as an indication that he understands the purpose for which he goes to Russia.

"The purpose of the Autonomous Industrial Colony Kuzbas is to run Nadejdenski Zavod and a number of enterprises in Kuznets Basin, towards the end of creating a big modern industry in Soviet Russia.

"The management of the Unit will be in the hands of a Managing Board of seven members, three to reside in Kuzbas, three

in the Urals and one in Moscow. These members will be selected by the workers in the Unit, subject to the approval of the Soviet authorities. The election will be for a term of one year, with the provision of recall by two-thirds of the workers, or by the Soviet Government, who will have a representative on the Managing Board.

"The Board of Management is the highest organ of the Unit, and will be responsible to the Soviet authorities. It will appoint and discharge the technical staff, which in turn will supervise all labor, as well as act as adviser to the Board of Management. All workers in the Unit will belong to their respective industrial unions, which again will act in an advisory capacity to the Board of Management and the technical staff.

"The Industrial Unions within the Unit will constitute a part of the All-Russian organization of Industrial Unions. Russian workers within the Unit shall have the same legal and material rights as the other participants from America and other countries.

"The Unit will guarantee to its members insurance to cover injuries incurred whilst working in the enterprises, sickness insurance, vacation, sanitary conditions, education, etc., at a standard which must, at least, be equivalent to that provided by the laws and regulations pertaining to workers in State enterprises in Soviet Russia.

"Any member who leaves the Unit, either by his own accord or otherwise, will be answered for by the Managing Board of the Unit only.

"For the time being an Organization Committee is formed that will function as a Managing Board, until at least three months, and at the most six months after the first groups arrive from America in their respective districts in Siberia and Ural. The members of this Organization Committee in Russia shall constitute the Managing Board in Russia. The members of the Organization Committee abroad will take care of the Unit's work in their respective countries in accordance with general instructions.

"The members of the Organization Committee in America will select and appoint the necessary qualified technicians, specialists and workers, and will as far as Russian-American emigrants are concerned, co-operate with Technical Aid to Soviet Russia. Russian-Americans shall not exceed 80 per cent of the total.

"The Organization Committee shall be responsible for the purchases in Canada and the United States for the complete equipment of the emigrants and their transport.

### PLEDGE

"1. The Organization Committee and the emigrants collectively are responsible that only such workers come to Russia that are able and willing to endure consciously the many privations that are unavoidably connected with the reconstruction of industry in a rather backward country, emerging from years of war and counter-revolution.

"2. Each member of the Unit who comes to Russia undertakes to work at his or her highest capacity in order to create the highest form of productivity, so that they will prove by deeds that the workers are more capable of operating industry than the capitalists. Each member undertakes to subordinate him or herself, to the discipline of the Unit.

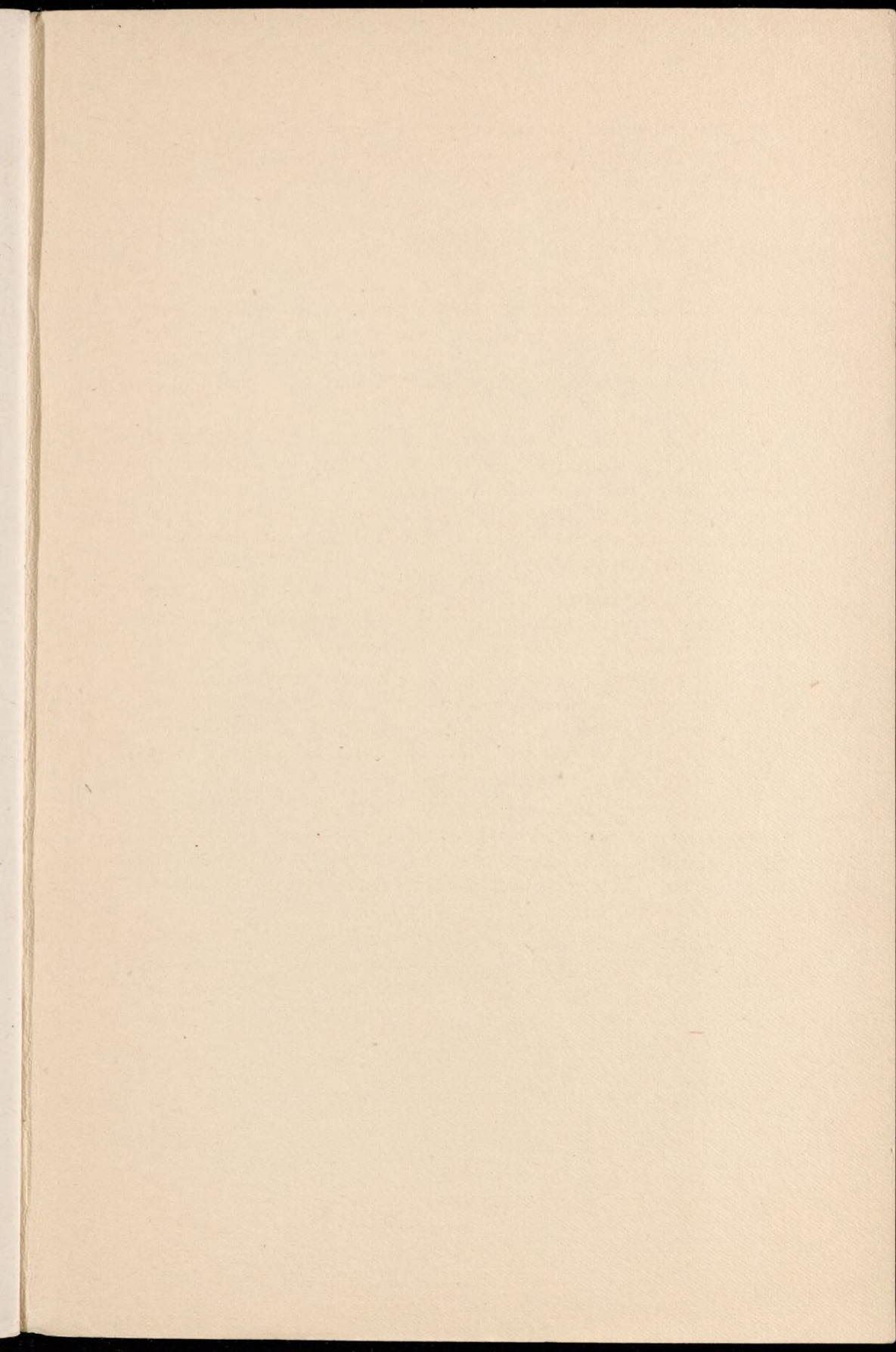
"3. The members of the Unit pledge themselves, in case of misunderstanding or conflict, that they will accept as final the decision of the highest Soviet authority in Russia.

"4. The members of the Unit pledge themselves to take into consideration the extreme nervousness of the hungry and exhausted Russian workers and peasants, and to try by all means to avoid friction, jealousy or misunderstandings, and to attempt by all means to establish friendly and amicable relations.

"The undersigned declares that he is cognizant with the general plan for the industrial colonization of Kuzbas and Nadejdenski Zavod, and with all the above Statutes, and that he is prepared to accept all the obligations expressed therein, particularly the last four paragraphs.

"He is prepared to work at least two years in Soviet Russia and to pay his own traveling expenses thereto, for clothes for two years, \$100.00 for food, and in addition \$100.00 or more, for necessary tools and machinery.

*February, 1922.*



INDUSTRIAL UNIONIST BOOK SHOP  
96 East 10th Street New York

The ACADEMY PRESS  
112 Fourth Avenue, N. Y.



*M. J. Pootky 7/21/22. June 27 1910*