

**FAMILY INTEREST**--Albert Weatherly, his father, Eugene, and mother, Maurine, examine pride Liz as Albert readies her for the Houston show. Right, the whole family has watched the project with interest, shown the younger brother Edward, Mrs. Weatherly, Dec. Weatherly and Albert. The Weatherlys feel that their son has gained valuable experience by raising the heifer.

**Winner of Shell Calf**

**WILLIAM ALBERT WEATHERLY ANXIOUS TO EXHIBIT REGISTERED HEIFER IN HOUSTON LIVESTOCK SHOW**

A Shell calf scramble winner, William Albert Weatherly of Nacogdoches is eagerly preparing to show his heifer in this year's Houston Livestock Show.

Albert was one of the scramble winners last year. "Our two oldest boys had scrambled before, but we had never been there to watch. It was quite a funny feeling to see Albert out there chasing a calf and trying so hard to win," said his mother, Maurine.

"I was awfully lucky to catch that calf, I saw this boy letting go as the calf ran away and I just happened to be there to catch it," Albert said.

Since that time he has used his \$200 certificate to purchase a registered holstein heifer, Vaught Farm Pride Liz.

Liz, as Albert calls her, is now 18 months old and weighs about 1,000 pounds. Albert has hopes of starting his own registered herd with Liz. In a letter to Refinery Manager Leonard T. Wilson, Albert said, "My father, a very astute trader, helped me choose her and she was the first one we both concurred on. I don't know if I am a professional or a novice, but I will try to make this a lucrative project."

Liz has already won a blue ribbon at the Nacogdoches County Fair.

Most of Albert's day is filled with school. He attends tenth grade classes at Nacogdoches High School. In the afternoons he works with his heifer and two steers. He feeds Liz about 20 pounds of feed a day and walks about a mile and a half.

He and his brother Edward, who will enter the calf scramble this year, are raising four calves besides Liz.

The Weatherlys, who have a 1200-acre dairy farm, mix their own feed for all of their cows and Liz. The heifer has been gaining weight rapidly with the home mixed corn and alfalfa hay she is fed everyday.

(Continued on Page 3.)



# SHELLEGRAPH



HOUSTON  
REFINERY

No. 7 Friday, February 13, 1970

DAYS OF THE WILD WEST REVISITED--GO-TEXAN DAY SET FOR THURSDAY, FEBRUARY 26 AT REFINERY

Go-Texan Day, when the Refinery is operated by cowboys and good-old-fashioned ladies, will be Thursday, February 26.

Two main activities planned for the day are the Go-Texan contest and the 75 cent barbecue lunch served in the Cafeteria.

The contest will be held in the Research Building meeting room at 11:45 a.m. Contestants may compete for six \$15 gift certificates from Oshman's. Categories are most authentic cowboy, most authentic cowgirl, best dude man, best dude lady, most unusual cowboy and most unusual cowgirl.

Participants must register with either the Administration Building Receptionist, Research Receptionist or the Engineering Field Secretary before 1 p.m. on Wednesday, February 25. All contestants will be treated to a free lunch after the contest.

Judges will be Betty Regan, Ann Varner and D. O. Henry, who were winners in the 1968 contest, W. L. McCarley and W. R. Davis.

Cleve O'Toole will be trail boss or master of ceremonies.

The cafeteria menu for the day will be hickory smoked barbecue beef and links, potato salad, slaw, ranch style beans, relishes, dessert, coffee, tea or 1/2 pint of milk.

PROVIDENT FUND NEWS

The following are the Provident Fund valuations:

- Equities Fund:
  - January 5, 1970 - \$2.218
  - January 20, 1970 - \$2.150

- Shell Stock Fund:
  - January, 1970 - \$41.732

# CELEBRATION

Susan Andre, daughter of Mr. and Mrs. M. L. Andre, is off to Europe with the cast of "Celebration", a University of Texas Drama Department play.

"Celebration" is being booked at military bases all over Europe by the USO for the next four months.

Susan tried out for the play last fall and was one of the 20 selected out of 350 who tried out. She is the only freshman in the cast.

The group left for Frankfurt, Germany last week and is set to begin touring immediately on an itinerary planned by the USO. They did not know in advance what military bases they would visit, but did know that part of the tour would be with Bob Hope's company.



Susan, who has two solos in the musical, "is completely at home on the stage. There is no question that she is in the right profession," her father said. She has been using her singing and dancing talents since she was very young. Most recently, she had the lead in the Milby High School presentation of "My Fair Lady."

She will probably go through the real test of an actress on the European tour, because the company will have two performances a day in a variety of theaters, from huge arenas to tents to outdoor stages.

The cast will be responsible for stage sets and props which they must put together for each performance. Because the cast is responsible for their equipment, they were allowed to take only three changes of clothes.

After playing at The University of Texas for one week, the cast was delighted to learn that they had been selected to go on the USO tour. Fourteen members of the original cast are on the tour.

Susan will get full credit toward a degree for her experiences during the next few months. During this time she will be learning techniques taught by the choreographer, director, and costume chief which were imported from Broadway for the original University of Texas production.

"Susan was not going to try out for the play at first, but some friends talked her into it," her father said. "Everyday she would call and say she was still in the running. It was quite a thrill for her when it was announced later that the play would tour Europe."

After the whirlwind tour, the group now have two weeks in which they can visit any city they want. Susan wants to go to Paris and London.

Marshall Andre says he is surprised how fast Susan is growing up. "She is only 17 and we probably won't recognize the young lady who returns at the end of the tour," he said.

## MARK STUBBS ON BAPTIST COLLEGE DEAN'S LIST

Mark N. Stubbs, son of Mr. and Mrs. B. Ac Stubbs, was among 85 students who have been named to the Dean's List at Houston Baptist College for the fall semester.

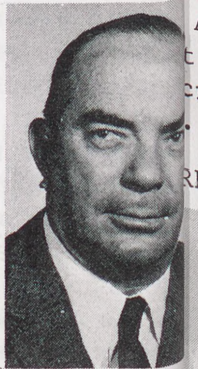
To make the Dean's List, a student must have a grade point average of 3.5 or better out of a possible 4.0. This achievement entitles the student to make applications for a partial scholarship at Houston Baptist College.

## I. A. (IKE) DANIEL, RETIREE, DIED JANUARY 28

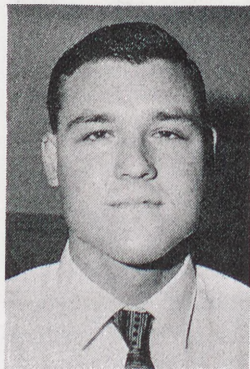
I. A. (Ike) Daniel, 64, died Wednesday, January 28. He is survived by his wife, Mrs. Lena Spence Daniel, and a son, Jack.

Daniel retired in 1963 as an Operator #1 in Lube Oils after 24 years of service. He began working for Shell in 1939 as a General Helper and served in the Plant Protection group for about four years.

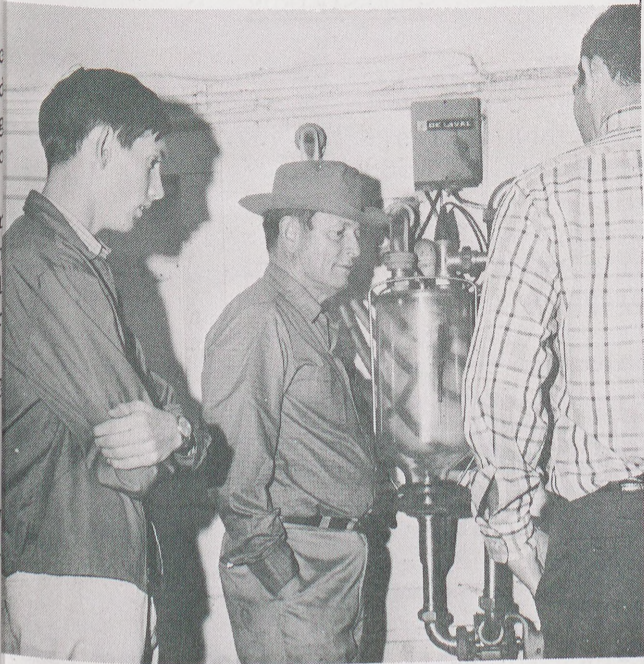
He was born in Kennard, Texas and graduated from High School in Crockett, Texas.



WELCOME TO SHELL



G. W. Kinison  
Engineer  
Engineering Services



**SHOWING VISITOR THROUGH DAIRY**--Albert and his father explained the workings of a dairy to a visitor from Houston. Albert's duties around the dairy farm in addition to raising Liz and going to Nacogdoches High School.

**CALF RAISING PROJECT PROVIDES EXPERIENCE STARTING A HERD OF HIS OWN TO YOUNG ALBERT**

(Continued from Page 1.)

Active in Future Farmers of America and 4-H, Albert is learning how to raise a herd. They even teach him how to keep records. "This is one of my weak points," said his father who has been a dairy farmer for about 5 years.

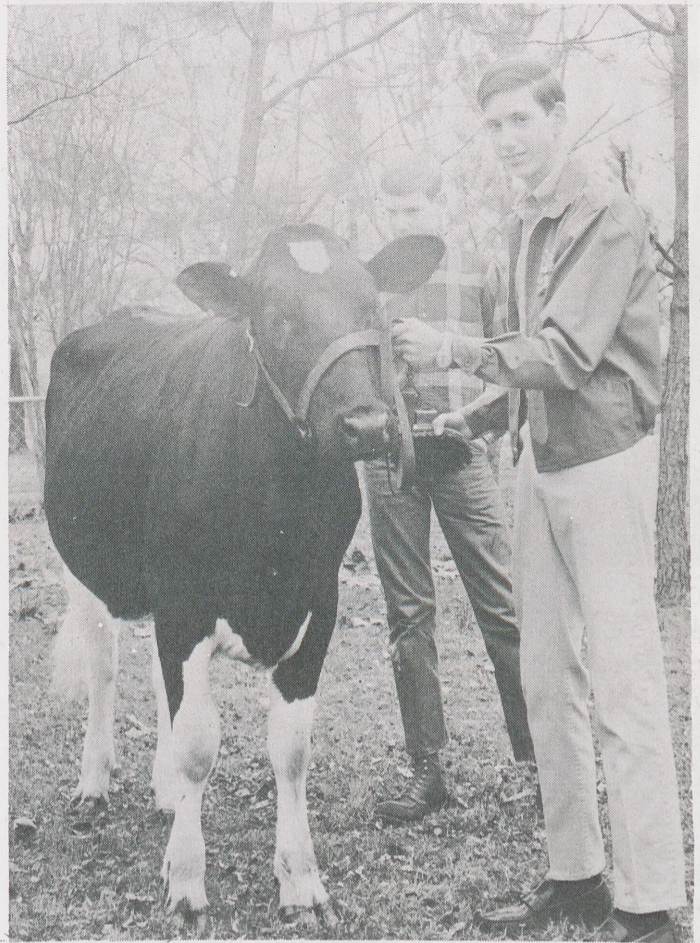
Albert must submit a monthly report on his heifer's progress to the County Agent, his sponsor--Shell, the Calf Scramble Office, and the District Extension Agent. When he brings the heifer to the Houston Livestock Show, he must submit an essay on his year of work and tell what he learned from the project.

Albert will exhibit Pride Liz for a week at the Livestock Show. His brother will scramble for his own calf on Tuesday, March

**PREPARING FOR THE STORK...**



**RIENDS GAVE** Lanetta Clark a baby shower recently in the Stenographic Section office. Lanetta works in the Mail Room.



**TEACHING THE HEIFER TO WALK** and stand is a project both Edward and Albert have worked on for several months.

**PROVIDENT FUND STATEMENTS COMING IN MARCH**

The Shell Provident Fund annual statement will be mailed to employees' homes in early March.

The Provident Fund is made up of three parts: Thrift Fund, Equities Fund and Shell Stock Fund. The statement shows balances as of December 31, 1969 in three different ways--cash in the Thrift Fund, units of participation in the Equities Fund, and cash as well as whole and partial shares of Shell stock in the Shell Stock Fund.

To compute the cash value of your Provident Fund account, it is necessary to convert units and shares to cash figures. Year-end values of Equities Fund units and Shell stock are included at the bottom of the Provident Fund statement. You may obtain current Shell stock prices in most newspapers. Up-to-date unit values of the Equities Fund are posted regularly on company bulletin boards.

Employees can learn more about the Provident Fund from their copy of the company's new benefits booklet, "Shell and Your Benefit Plans." Section six covers such topics as who may join, how each fund operates, provisions for widows and federal income tax.

**SHELLEGRAPH**

Published by Shell Oil Company for its Houston Refinery and Houston Research employees at Deer Park, Texas 77536.

Mrs. Josie Ochoa--Editor

Reprints allowed only by request. To submit news and photographs, call extension 541 or send material to Room 103, Main Office Annex.



**GOING FISHING**--Allen L. Williams, Operator #1, Distilling, receives fishing tackle to prepare him for retirement. E. H. Mergens, Distilling Manager, made the presentation of gifts from Williams' many friends.

#### PETROLEUM PRODUCTS TRAVEL TO THE MOON

Petroleum played many important parts in man's first journey to the surface of the moon. The initial liftoff, for example, was powered by kerosene and liquid oxygen.

The astronauts' space suits were made from petroleum-based fibers and plastics and many parts of the space vehicle, including gaskets, seals and even the critical re-entry heat shield were also products of petroleum.

After the searing re-entry into the earth's atmosphere, the giant parachutes that slowed the space vehicle's descent were made from petroleum-based nylon. Even the flotation gear that righted the vehicle after splash-down was made from petroleum-based urethane.

#### RODEWAY INNS JOINS SELECT CIRCLE OFFERING ACCOMMODATIONS TO SHELL CREDIT CARD HOLDERS

Motorists with Shell credit cards recently became entitled to another advantage. Now they may use their cards to obtain accommodations at Rodeway Inns, a new and growing chain of motels.

Rodeway Inns operates 75 motels in the West, Southwest and South, and is building 15 more. The chain joins Travelodge, Master Hosts and Sheraton in providing quality accommodations for Shell credit card holders.

A Shell credit card, though, can be used to charge a lot more than lodging and food on the road. It's accepted by Hertz, Avis and National car rental companies. And it can be used to charge accidental death and dismemberment insurance in most states, under a policy issued by Allstate.

Not to be overlooked, a Shell credit card is a traveler's key to fuel and motor oil--for his car, boat or aircraft--and for tires, batteries, accessories and maintenance services for his automobile.

Employees, members of their family and friends may obtain a credit card by writing the Retail Credit Manager at the Tulsa Data Service Center, Shell Oil Company, 18th and Baltimore Streets, Tulsa, Okla. 74102.

#### CLASSIFIEDS

##### FOR SALE

2 shetland ponies, \$25, \$35.  
Telephone: 645-5836

Motorcycle, Norton (British Make), excellent condition, \$650.  
Telephone: MI 3-7640

2 aluminum folding beds, \$15, Federal enlarger, \$20, 19" portable TV, black & white \$20.  
Telephone: 473-5603

Golden retriever puppies, 4 weeks old, registered, \$125 a piece.  
Telephone: 944-2623 after 5 p.m.

72-inch sofa--off-white brocade--good condition.  
Telephone: MO 4-1510

Low equity. Four bedroom home in Deer Park. Must see to appreciate.  
Telephone: 472-7986 after 6 and weekends.

Two beds with box springs & mattresses, good condition, double bed sells for \$30, 3/4 bed for \$10.  
Telephone: GR 3-1137

1965 1/2 ton Chevrolet pickup truck--short wheel base--67,000 miles, \$350.  
Telephone: GR 2-3018

1967 Volkswagen, radio, heater, sun roof, 16,000 miles, very good condition, by owner \$1025.  
Telephone: 944-5308 or 472-6768

##### WILL SWAP

2 wooded corner lots 60x150 each, back to back, in NE Houston for a mobile trailer home of equal value.  
Telephone: 453-5154



A MAXI SWEATER AND BERET are the latest dogwear as shown by Blackie, owned by Mrs. Evelyn Lemmons, Nurse. If you have an unusual picture of your dog or cat, submit to the Shellegraph and if published, you will be entitled to a Shell Flea Collar for your pet.