

# Shellegram

Deer Park Manufacturing Complex

Thursday, August 16, 1979

Vol. 44, No. 33

## For Benefit Game

# Players Needed For 'Bleepball'

Volunteers are needed to form a DPMC team of "Masked Bandits" who will play the Lighthouse for the Blind "Bayou Bombers," the Texas State Bleepball champions, August 30, 1979, as part of the Complex's United Way Campaign kickoff.

"Bleepball" is a game like softball, played without the benefit of vision. The ball contains a bleeper, and players must depend on their sense of hearing for hitting and fielding the ball. The game is scheduled for the Houston Rugby Field in Memorial Park because of its accoustical qualities, a definite requirement for the game.

The DPMC team will be a mixed team of male and female players who will receive special coaching from certified instructors at practice sessions now being scheduled with the Lighthouse for the Blind. Knowledge of the game is not a prerequisite for participation.

Bleepball will allow unlimited substitution of DPMC Masked Bandits in this contest so that all participants will

get into the game.

DPMC bleepball batters and fielders with good hearing sensitivity will be blindfolded (masked) to simulate

blindness. Pitchers and catchers are, however, permitted to be sighted for obvious reasons. In addition, the DPMC

Continued on page 2

## Too Much Oil Into Chemicals?

About 6 percent of U.S. petroleum refinery output is used to produce petrochemicals. At Shell, because of our major position in the petrochemical industry, that figure is closer to 10 percent. While petrochemicals also are being affected by the crude oil shortage, further cutbacks in this use would have a very minimal impact on the fuel sector, but would cause major disruptions to U.S. jobs and the economy.

Petrochemical products are essential to everyday living. Companies that use petrochemicals have created jobs for more than 29 million people in this country. About 35-45 percent of U.S. manufacturing depends on a wide variety of petrochemical products in their respective operations. In view of this, petrochemical cutbacks affecting

domestic manufacturing would result in very severe disruptions to the economy.

Shell refineries and chemical plants are interwoven into complexes which maximize our ability to conserve energy and optimize costs. The predominant type of chemical plants we operate, called olefins plants, are in fact conversion units producing about 30 percent of their output as blending stocks for high octane gasoline and other energy products.

The balance of the output is raw material for petrochemicals used to produce an almost endless array of valuable products including medicines, consumer products, clothing, and plastics. Many of the products derived from petrochemicals serve to further this country's conservation efforts. For example, plastics are used to reduce automobile weight which in turn increases gasoline mileage per gallon. Petrochemical products are used for insulation which provides huge savings on heating and cooling systems in buildings and homes.

It is critical that long-range public policy recognizes the fundamental difference between the use of hydrocarbons to produce goods of greater economic value to consumers, and the consumption of hydrocarbons as energy. While much of the solution for the next decade lies in public policy aimed at increasing production of oil and gas, near term progress can be made by improved conservation of fuels without serious disruptions to the economy.

## Anyone See A Yellow Unicycle?

Operations-West supervisors Sammy Davis (on the left) and Tom Davis wonder what a poor guy must do to ensure his shiny, yellow Schwinn bicycle being where he left it the night before. But the guy who's really wondering is Distilling process manager Pete Lanchak. After all, he's the one left with only a front wheel chained and locked to the bicycle stand located in front of the UCC building.



# Employee Tidbits

Dispatching analyst **Roy E. Schroeder** considers himself a honky-tonk fan. Phenol operations foreman **W. P. "Bill" Bourland's** wife, **Christy**, is a former international competition water skier. Maintenance North pipefitter **Glenn Eberhardt** bottoms out while helping out during the flood. Training's **Ouida Reeves** and **Sue Schlemmer's** sense of humor, wit and tact revealed at **Bill Hurston's** send-off to Wood River Refinery.

"G" operator **Kelly Calvert** walked

## Masked Bandits Bleepball Team

Continued from page 1

Masked Bandits will also need unmasked volunteers to serve as: (1) spotters for guidance of the Masked Bandit fielders, (2) Base operators to help Masked Bandit baserunners find the bases, (3) scorers to keep accurate count of the opposition's runs unless the Masked Bandits' ears get finely tuned in during practice sessions, (4) timekeepers to record for posterity the base running speeds of our Masked Bandits, (5) managers to provide strategy, and (6) disciplined fans for our team.

Family participation is urged as players or fans in this great "People to People" effort of your Complex United Way teams. Sign up now! the deadline Aug. 23. Call **Chuck Vasek**, Scora Softball chairman at 6391 or send your name and telephone number to the United Way Campaign Office, Rm 108, R-Adm., Ext. 6021.

## Correction To Energy Answer

There was a typographical error in the answer to one of the energy questions in last week's *Shellegram*. The response to a question about the difference in gasoline prices in Houston and Minneapolis mistakenly quoted the transportation costs of gasoline to Minnesota as 32 cents per gallon. The correct transportation cost is three cents per gallon.

and hitchhiked from Red Bluff at Highway 225 to arrive on time for work the day of the flood. Heavy equipment operator **W. "Tat" Tatman** hams it up for the photographer. Senior clerk **Ovidia Lindsey** dispatches boom truck to pick up the Keystoner at the crude dock. Maintenance North's hip new crane operator is **Danny Moore**. Garage mechanic **Rob Bass** finds new sailboat an endless variety of learning experiences.

Heavy equipment operator **Ken Love** attempts to grow a mustache. Heavy equipment operator **Marshall Wood** says **Ronnie Stevenson**, truck driver, could use a few domino lessons. It's belated thanks to heavy equipment operator **Rodney Chauvin** for a smooth basket ride to photograph the changing out of the DU-2 furnace stacks. **Gerald "Che Che" Miles**, another heavy equipment operator, hurts back handing co-worker a wrench. Senior engineer, Engineering Offsites, **John Gray** recently attended the 25th reunion of his high school class and was surprised to learn that one of them, **Jeanne Carstens**, was now editor of the Anacortes newsletter.

Retirees **Vic Karney** (Automotive) and wife, **Marie** (Medical), enjoy the leisure hours they spend at their home in Smith Point on the bay near Anahauc. Another retiree, **Riley VanMatre** (Maintenance North machinist) would like to know more about the 50th Anniversary coming up on September 29.

## Shell Program Features 1981 Scholarships

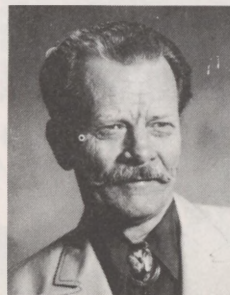
In its thirteenth Shell Companies scholarships competition, the Shell Companies Foundation, Incorporated, will sponsor 50 college scholarships for Shell children who will complete high school in 1980 and enter college in 1981. As in previous years, all phases of the competition will be handled by the National Merit Scholarship Corporation (NMSC).

Those eligible to compete are sons and daughters of regular fulltime employees and retired or deceased employees of Shell Oil Company (including Shell Chemical Company and Shell Development Company) and Shell Pipe Line Corporation.

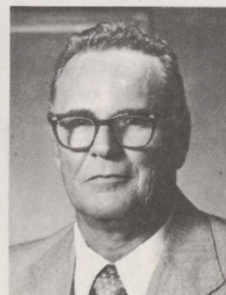
Students who wish to compete must submit completed 1981 entry forms by November 1, 1979, to Scholarship Competition, Shell Companies Foundation, Incorporated, Two Shell Plaza, P. O. Box 2099, Houston, Texas 77001. Additionally, they must take the preliminary Scholastic Aptitude Test-National Merit Scholarship Qualifying Test (PSAT-NMSQT) which will be given in high schools on October 23 or October 27, 1979.

Descriptive booklets covering the program and 1981 entry forms may be obtained from the Employee Relations office at any Company location or from the Shell Companies Foundation, Incorporated, Two Shell Plaza, P. O. Box 2099, Houston, Texas 77001 (241-3078).

## Service Anniversaries



30 Years  
F. M. Leonard  
Utilities North



25 Years  
J. W. Burks  
Inspection



25 Years  
L. Copeland  
Dispatching Docks



25 Years  
B. W. Farmer  
Dispatching



Renovations have been completed on the new automotive garage located on Center and "S" Streets, where most of the automotive maintenance will be done.

## DPMC Gets Auto Maintenance Facility

The North Automotive Maintenance Facility, under construction the last two years, was completed and officially open June 1. The three buildings, an automated car wash, a lubrication area and a maintenance section-administrative office, cost over one-half million dollars to construct.

"It's built on the site of the old Research Pilot Plant," said Bob Staton, Maintenance Supervisor. "We demolished three buildings to clear the site, but left the EPC building standing. The greatest portion of our work was in renovating and adding 6,500 square feet to it, building new partitions, tearing down old ones and installing new plumbing. This brings the total square footage for the new garage complex to 38,600 square feet."

Ray Crawford, manager, West District Maintenance North, explained why the former garage was considered obsolete. "It has been here for 40 years, and we needed a garage with more complete facilities in order to do a better job maintaining the complex fleet."

The new garage is more than new buildings. New equipment has been or will be installed. "We will eventually have a diagnostic analyzer that can be connected to a vehicle; and, through a

series of automatic tests, it will pinpoint problems in the ignition, electrical, starting and fuel systems. In addition, this analyzer will perform exhaust emission tests for compliance with existing EPA requirements."

The car wash will improve the efficiency and speed in which employees can get their vehicles cleaned. "We want to encourage people to have their vehicles washed regularly," Crawford said.

Other new items include: front end alignment, brake machines, overhead cranes and lifts to handle heavy equipment, tire repair, increased capability for doing oil changes and lube jobs, a parts room, increased office space for clerical staff and administration, larger bay areas, seven hydraulic lifts and an automated fueling system.

The fueling system, is perhaps the most novel feature of the new garage. A punch card system allows people to turn on one of the four pumps for gasoline (two regular and two unleaded). When a person finishes pumping, the following information is sent to the automotive office to a teletype machine: odometer reading, amount of regular or unleaded gas delivered, the vehicle number and type, the time and

the date. "The system really helps us on maintenance records and on keeping a running inventory of the gasoline," said Staton.

New to the garage staff is the position of service coordinator, who serves in much the same capacity as the service manager in any automobile dealership. This job is assigned to Jerry Davis who has the responsibility of checking all vehicles brought to the garage to determine what repairs are required. After initiating the work order on the vehicle, Jerry passes it on to either G. W. Anderwald or C. W. Eddleman, both of whom are garage foremen. They then supervise the mechanics, while the necessary work is being done.

"Our big advantages are that all repairs and maintenance procedures are consolidated, and we are now centrally located in the plant," said Davis. "Right now, we just want people to bear with us as we develop and get over our growing pains. Everything's a little unsettled now, but we're at the end of the moving stage and are working toward making all phases of the new garage operational."

By Carlos Vidal Greth



Automotive mechanic Wes Clark enjoys doing body work on company cars in his new quarters.

A company van awaits a lube job in automotive's new lubrication shop.



# Classifieds

## FOR SALE

1976 Corvette, 28,000 miles, AM-FM, tilt, exc. condition, \$7,850. 479-5018

10 x 12 canvas tent. \$50. 4 down sleeping bags. \$60 each. 479-2300

Riding lawn mower with rear bagger attachment. \$225. firm. 476-0769

1977 Camaro Z-28, power steering, power brakes, 4-speed, air, cruise, tilt, AM-FM-Cass. \$5,700. 328-3715

1975 Firebird Esprit, 350 V-8, auto., vinyl top, rally wheels, AM-FM 8-track, new tires and alignment. 334-2878

1972 Starcraft pop-up camper, sleeps 6, AC, stove, furnace, icebox, sink, awning, porta-potty. \$1,400. 479-0116

35 Cal. Marlin, lever action with case. \$125. 455-0056

750 Honda, 1976 engine on 1974 frame, excellent condition. \$1,500. 487-0370

New S&W Mod 29, 44 mag with 8 3/4" barrel, factory nickel finish, unfired and in wooden box. 471-5416

Four 14" cast "mag" wheels from 1978 Grand Prix. \$200. 424-7382

China hutch, Early American. \$100. Butcher block game table and 4 chairs. \$70. 479-3485

Desk model manual Underwood typewriter. \$25. 473-8720

Black living room set, "Spanish" couch, love seat, chair with ottoman. 479-2948 or 333-4162

Rockwell 9" table saw - model 34-580, guide rails, solid ext. wings, blade guard and stand. \$125. 488-5583

Easy-Lift sway control hitch with sway bar and electric brake kit. \$150. 643-4883

1974 Anthony 19' jet boat, 455 Olds, 390 H.P., tandem trailer. \$4,000. 472-1700

1975 Bayliner 17' 130 H.P. Volvo I.O., new seats, carpet, and depth finder, motor and outdrive. \$3,500. 472-0125

1966 Mustang, 289 C.I. - auto trans., radio. \$895. 455-0056

Grand Prix Moto Cross boots, size 9, \$35. 469-3112

Glass dr. fireplace screen, 38" or less, \$50. artificial logs, \$20. 475-1229

8' x 10' tent (Sears), used once. \$75.; 6 light chandelier, like new. \$100. 476-4085

351 Ford Windsor engine and transmission out of 1973 LTD. 337-2086 after 6 Gold crushed velvet sofa, 84" with matching recliner. \$200. 437-1616

Hide-A-Bed, multi-browns, full size. \$150. Ken-Wood kitchen table and chairs, blond finish. \$175. Lloyd mini-stereo and tape deck. \$75. 472-1440

1974 Pontiac Catalina, blue, 4 dr. sedan, very clean, good tires, P-S-B, radio, regular gas; 1977 Pontiac Grand Prix, velour interior, excellent condition, low mileage, fully equipped. 472-0595

Loveseat, green and gold plaid, traditional, excellent condition. \$75. 485-3053

1973 Sea Ray 18' inboard-outboard 165 Mercruiser. \$3,295. 1973 TM 250 Suzuki dirt bike. \$350. 476-0563

1974 Mercury Comet - 6-cyl vinyl top, auto, power, low miles \$1,795. 943-0622  
2 1/2 ton central air and 75,000 BTU, gas furnace, Stewart Warner, 3 years old, \$200. 479-0229

Wurlitzer custom organ - Model 550 - with Orbit III, synthesizer and cassette recorder, two keyboards and 25 note chimes, exc. \$1975. 479-2425

## FREE

2 cats, 3 months old, housebroken, rabies shots. 472-0018

## WANTED

Ladies or big girl's bike. 488-0403

Large toy "red" wagon. 668-9506

## PERSONALS

Retirement party for E. M. (Bubba) Farmer, 2:30 p.m., August 30, 1979, Refinery Cafeteria, bar-b-que and beer.

I wish to thank all my friends at Shell for the party, retirement gift, and your good wishes. I will have many fond memories of our years together. Hope to see you often in the years to come. Thanks again for everything, especially for being my friends.

- J. W. Lovett

To all my friends and co-workers, a heartfelt note of gratitude. You have overwhelmed us with your kindness, concern, and generosity. May you all be blessed with good health and peace from above. Smiles from

- Roberta Reeves and son Joseph

The family of E. L. Carraway acknowledges with grateful appreciation your kind expression of sympathy.

We would like to say "thanks" to all of our many friends at Shell Refinery for the gifts we received and the retirement party you shared with us on August 1st. Dot & I are both very grateful for both the many gifts and the good wishes that went with them. May all of you be able to experience this same equally enjoyable occasion. Yawl come now, heah?

- Fred & Dot Shoemaker

Many thanks to all of the people who have made my job at the DPMC so enjoyable over the past four and a half years. The party was great and the pen set will complement my new desk at One Shell Plaza. I consider myself fortunate to have had the opportunity to work with such a great bunch of people. I will always treasure the experience and friendship gained at Deer Park. Good luck and thanks again.

- Bill Lafield



## Shellegram

Deer Park Manufacturing Complex

Published weekly by Shell's Deer Park Manufacturing Complex for its employees and pensioners. All inquiries should be addressed to **Shellegram**, Shell Oil Company, P. O. 100, Deer Park, Texas 77536.

**Dotti West - Editor**