



ALL YOU HAVE TO DO...is find the queen. P. E. Dickerson, Operator No. 1, Lube A, watches an unruly swarm of bees adorning a control valve on the HVI Unit. He's smiling because he's got the queen where he wants her - in the makeshift hive. If you look closely you can see her loyal subjects crowding to get in a small door (circled) at the bottom of the hive. Dickerson, who has 3 hives at home in Golden Acres, says this stray swarm was a "good one - weighing about 5 pounds." His statement went unchallenged - no one on hand had the scales or the inclination to weigh a pound of bees.

IT'S TOMORROW FOR THE PARTY

What does your conscience tell you about voting in tomorrow's Primary? If it's telling you to vote, why not pause long enough to ask yourself why? For one reason, the opportunity to vote in free elections is hardly a privilege these days - it's your obligation as an American with a personal stake in the future. Democrat or Republican - your Primary is tomorrow - just let your conscience be your guide - you'll be there.

PROVIDENT FUND NEWS

Here are the latest Provident Fund valuations:

Equities Fund:

April 5, 1966 - \$1.732

April 20, 1966 - 1.763

Shell Stock Fund:

March, 1966 - \$59.505

SHELLEGRAPH



HOUSTON
REFINERY

No. 183

Friday, May 6, 1966

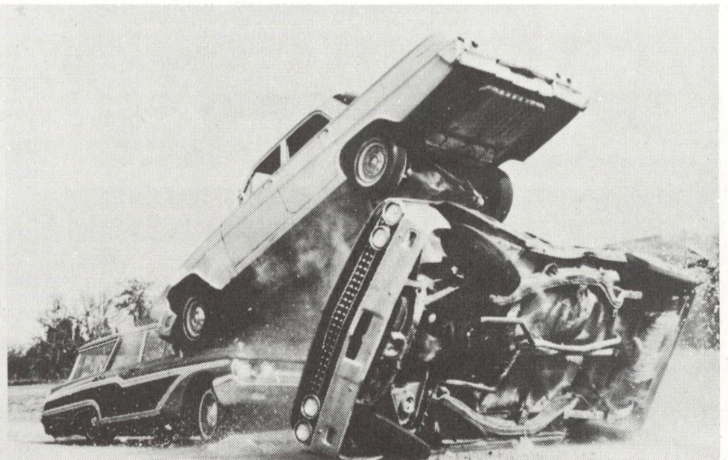
HERE ARE SOME THINGS YOU SHOULD KNOW ABOUT THE NEW 1966 NATIONAL DRIVERS TEST

By watching T.V. on Tuesday, May 24, at 9:00 p.m., you might save your life - or someone else's. This is no joke - no more so than are the bodies of traffic victims strewn across the nation's highways. Even if you're fed-up with T.V. tests, call on your good judgment in this matter and chances are you will not only have your own family before the set, but your neighbors will be there as well.

The new driver's test which will again be seen on Channel 11, is entirely new. There will be more questions covering a greater range of driving situations. It will also be better because much was learned from last year's show regarding wording and filming techniques.

The show will have attractions for everyone - although it's not intended to be an entertainment program. It will include spectacular filming - all in color to make it more true to life.

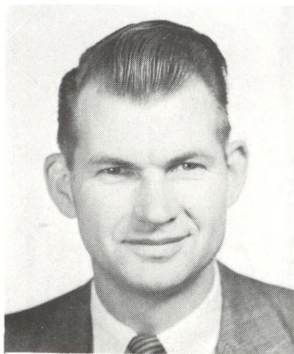
But how much closer to life can you get when your wife or teenager learns how to handle a driving situation that would have otherwise resulted in tragedy?



CRRRASH...and you were there - if you took part in last year's National Drivers Test. Scenes like this one will put you in the driver's seat two weeks from now - May 24 at 9:00 P.M. on Channel 11. You owe it to yourself and your family to be there.

**LIMBACH TO HEAD OFFICE MARKETING ECONOMICS
SUCCEEDED BY NAGER IN RESEARCH**

Jack Limbach will transfer to Head Office Marketing Economics as Assistant to Manager Product Economics effective June 1. As announced Wednesday by Research Director W. A. Bailey, Limbach will be succeeded by Max Nager as Chief Research Chemist.

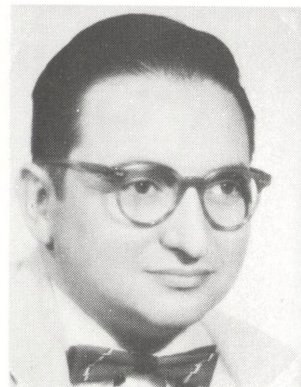


LIMBACH

Jack joined Shell here at Houston Refinery as a Jr. Technologist following his graduation from Georgia Tech in 1947. He was transferred to Head Office Manufacturing Technological in 1954 after serving in several Refinery departments. He transferred to Wilmington Refinery as Assistant Manager Alkylation and returned here as Manager Technological. He was promoted to his present position of Chief Research Engineer in December, 1964.

Jack, his wife Melba, and their two sons Greg, 12; and Kirk, 8, live in Pasadena.

Max also joined Shell here. His first assignment following his graduation in 1951 from Ohio State University with a Ph.D. in Chemistry was in the Houston Research

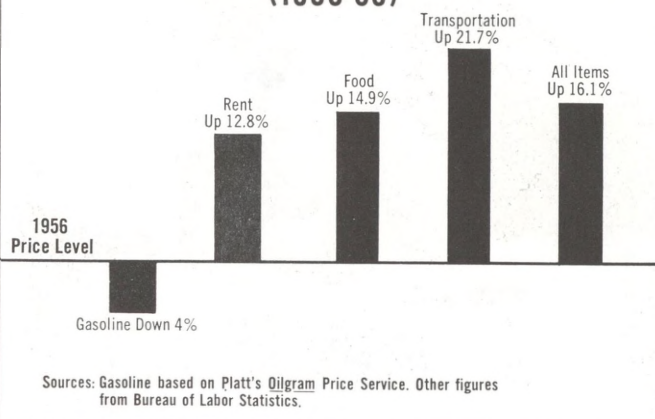


NAGER

Laboratory as a Research Chemist. He spent two years in Head Office Manufacturing Research and returned here as a Senior Research Chemist in 1957. He became Group Leader in August, 1959, and went to Amsterdam on special assignment with Associates for one year beginning in July, 1963. He was named Assistant Chief Research Chemist in August, 1964.

Max, his wife Ruth, and their three sons Alan, 14; Ross, 12; and Glen, 8, live in Pasadena.

**Gasoline Bucks Consumer Price Trend
(1956-65)**



REMEMBER HOW MUCH YOU PAID...for a gallon of gasoline in 1956 - less tax? If you said about 20½¢ (20.70¢), you've got a fantastic memory. But you're paying even less for it today - and the quality has been steadily improving. National averages for regular are up from about 90 to 94 octane since 1956. Then why does it cost more? You guessed it - taxes. These steadily increasing taxes are equivalent to about a 50% sales tax on gasoline today. In fact, during the past 10 years, average State and Federal taxes have risen 25%! Still, the octane rating (the fuel's resistance to engine knock) has gone up - and so have other characteristics like volatility, cleanliness, power, mileage, and control of harmful engine deposits. So, think about it - you're in the business of making a better product which costs less - makes you feel pretty good doesn't it? (Go ahead and brag about it if you want to.)

SAFETY RULE FOR WEEK BEGINNING MAY 9

The Safety Dollar Mystery Man is still at large and his list of victims grows longer with each correct answer to the question "What's the Safety Rule of the week?" Be ready for him by boning up on rule II on page 36 of your Safety Manual - the valve you turn may be your own.

A CLOSE-UP OF THE SPORTSMAN'S FIRST AID KIT - ONE OF 4 TYPES NOW AVAILABLE AT SPECIAL RATES



Here's the Sportsman's First Aid Kit. It's ideal for hunters, fishermen, camping families, hiking groups, and summer cottages. This handy companion for any outdoor activity has a rust-proof container made of high impact styrene. It's water resistant and dirt and dust proof. The cost is \$4.60 - less a dollar paid by Shell if it's the first one of any kind you buy. It contains a complete snake bite unit, scissors, forceps, a large assortment of bandages, water purification and salt tablets, antiseptic cream, and other items. The Sportsman's kit, along with the other three types of high quality first aid kits at specially reduced prices, are on display this month only at the Main Gate clockhouse and in the cafeteria. Simply place your order (cash only) with the Fire and Safety Department. Remember, Shell pays the first dollar on the first one you buy.



CAN'T SLEEP NIGHTS? - Here's an idea: An all-night slot-racing marathon. Two Shell-sons, KEN SCHROEDER and RICHARD WILLIAMS, teamed up for one last week at Broadway Raceways at 10:00 p.m., and at 2:30 the next morning, they walked out winners. Ken is the son of R. E. SCHROEDER, Industrial Engineering, and Richard is the son of C. F. WILLIAMS, Engineering Field. Competing in this marathon were five other teams racing at scale speeds averaging 260 mph - actually clocked. The drivers switched every 40 minutes and before the evening was over the winners had made 2700 laps around the course.

IT'S NATIONAL "BE KIND TO ANIMALS WEEK" - so take a dog to lunch. It's the 52nd annual observation of one of the oldest special "weeks" in this country. Even old George - our sad-eyed SHELLEGRAPH mascot of sorts - figures someone will toss him a biscuit this week (but no one has yet, as you can see). George



has a lot of friends at the SPCA Kennels just itchin' to find a home. Just in case you're interested, visiting hours during "Be Kind to Animals Week" or any other time at the SPCA's modern facilities at 519 Sach's (off the 3100 block of Washington Ave.) are from 9:00 a.m. to

5:30 p.m., Monday through Saturday, and Sunday from 1:00 p.m. to 5:30 p.m.

A CASE FOR PESTICIDES - "Bugs or People?*" Here's a new book by a writer on conservation and farm subjects for 40 years, documents the need for pesticides in terms of multibillion-dollar agricultural losses, and food for the world's exploding population. The author points out the annual bill for insect damage to crops in this country alone is \$4 billion. Weeds inflict an estimated \$5 billion worth, fungal diseases \$3 billion, and rats \$2 billion. Emphasizing the importance of safe use, he candidly examines and evaluates the many criticisms directed at pesticides during the past few years. Obviously, he has come to feel that in most of the problem situations, known benefits greatly outweigh potential risks.

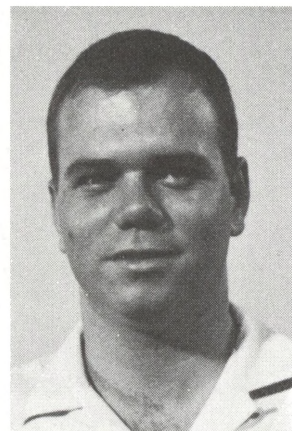
*"Bugs or People?" by Wheeler McMiller; Appleton-Century, New York; 228 pages; \$4.95.

PROCESS ENGINEER R. F. ANDREWS TO TRANSFER TO HEAD OFFICE MANUFACTURING TECHNOLOGICAL

Bob Andrews, who is presently assigned to the Cat. Cracking Department as a Process Engineer, will move to Head Office in New York. He will assume his duties in the Manufacturing Technological Dept., effective July 1.

Bob joined Shell here as a Research Engineer in 1960 following his graduation from the University of Florida with a B.S. degree in Chemical Engineering. He transferred from the Houston Research Laboratory to the Refinery Technological Department in 1965, where he has since held various technical assignments in operations.

Bob lives with his wife Sally and their two boys, Robert, 3; George, 10 months, in Pasadena.



PERSONNEL CHANGES

- H. W. Payne - From Clerk to Analyst - Engineering Construction
- C. A. Trevino - From Laboratory Assistant to Sr. Laboratory Assistant, Research
- P. A. Bezdek - From Jr. File Clerk - Treasury to Jr. Clerk - Research

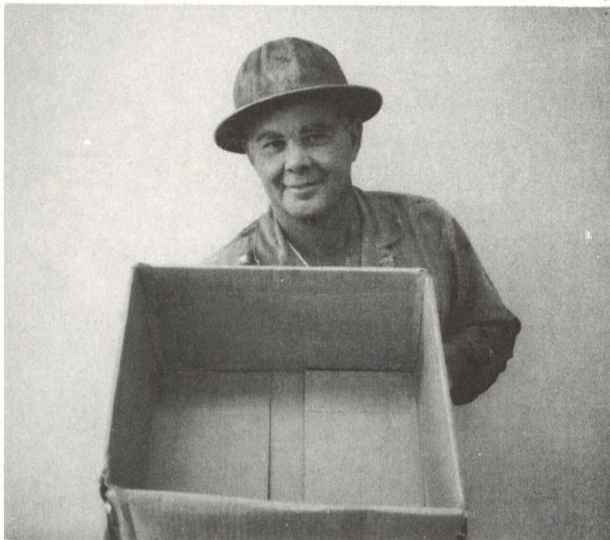
GRADUATES-YOUR "SHELLEGRAPH" WANTS YOU

Parents - Don't forget to send your graduate's picture and information sheet to the SHELLEGRAPH. The deadline approaches.

HOW DO KIDS LOOK...after they've seen a refinery? Here's a busload of 5th graders from Orange Grove Elementary School after their visit last week. Highlighting their first venture into the refining business was a demonstration of safe handling of petroleum products conducted by Fire & Safety Inspector H. M. Hancock. The group also paid a visit to Shell Chemical before returning home.



HAD YOUR LAUGH FOR TODAY? THIS ONE IS GUARANTEED OR YOUR MONEY CHEERFULLY REFUNDED



WAS HE LEFT HOLDING THE BAG?...J. W. Lovett, Pipefitter No. 1, (shown here) will say he was. It all happened Monday when Foreman George Stanfield's crew was installing an 8" line in the pipe rack on the upper dock road. Lovett, along with Pipefitters B. H. Wagner and R. F. Allen, had discovered an obstruction in the 40' length of pipe and diagnosed it as a 'possum. Knowing a ready market for fresh 'possum, they agreed to catch the "varmit" in a cardboard box - with Lovett holding the box. After all efforts to chase, poke, or coax the obstruction out of hiding had failed, one end of the line was raised almost vertically and SWISH - out came the obstruction right into the box Lovett was holding - but not for long. The friendly 'possum turned out to be a big fat 2-striper skunk. Lovett says he didn't get sprayed because he figures both he and the skunk were too scared to do anything but "make tracks."

THIS WEEK'S SAFETY DOLLAR WINNERS

- A. G. Buckley - Pipefitters
- N. M. King - CC Gas
- A. R. Hughes - Effluent Cont.
- O. Green - Refinery Lab.
- J. D. Coker - Electricians

WELCOME



Dennis D. Faulk
Research Chemist
Research



Melba Jo Newby
Opr. Telephone
Treasury



"IT'S YOUR VACATION AND YOU CAN DO ANYTHING YOU WANT—
WASH THE WALLS, PAINT THE GARAGE, SPADE THE GARDEN..."

CLASSIFIEDS

FOR SALE

1964 Ford Country Sedan. Air, automatic, radio, heater, tinted glass. 37,000 miles. \$1,595.00
Telephone - GR-9-1295 after 5 P.M.

Set of 1864 Rogers Bros. silver service for 8 - looks new.
\$30.00
Telephone - HU-6-0364

Deluxe Model Kitchen Range
Automatic pilots, griddle-in-the-middle, rotisserie, 36-inch oven, good condition, exceptionally clean.
Telephone - GY-8-6065

Good 8N Ford Tractor. Reasonable.
Telephone - GA-1-1431 after 6 P.M.

20" Rotary Mower with Clinton 4-cycle engine.
\$15.00
Telephone - GR-2-3164

DeWalt Radial Arm Saw - \$75 or trade for garden tiller.
Telephone - HU-6-6611

WANT TO BUY

Outboard gas tank.
Telephone GR-2-6370

Honey Extractor
Telephone - HU-6-6611

24" Boy's bicycle in good shape for about \$15.
Telephone - PR-4-4519