

Shellegraph

Houston Refinery

Vol. 37, No. 11

Friday, March 17, 1972



Treasure Hunters of Pasadena staged a hunt at the Danville ghost town site recently and Shellites were among the 175 participating.

Cyldie and Bubba Riggs, R. L. Evans, and Jim Alexander used their metal detectors. Alexander holds a metal piece with 1842 inscription

H. L. CLARK, S. S. BRAUN INVOLVED IN TRANSFERS TO HOUSTON OFFICES

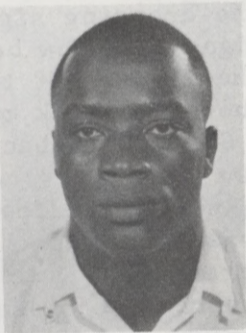
H. L. Clark, Mathematician, MTM Research Lab-Houston, is being transferred to the Technical Computing Center as a Systems Analyst.

ery Equipment, has been transferred to Manufacturing Engineering as a Staff Engineer.

The move was effective March 1.

Steve holds a B.S. degree in mechanical engineering from the Missouri School of Mines. He joined Shell as a Junior Engineer at the Wood River Refinery in 1946. He moved to Head Office in 1956 as a Senior Engineer, becoming Assistant Chief Engineer at Houston Refinery in 1958. He moved to Manager Engineering Services before assuming his last position in 1968.

The move, which is effective April 1, was announced by W. A. Bailey, Research Director.



Harold Clark holds an M.S. degree in mathematics from Texas Southern University.

He joined Shell as a Junior Lab Assistant in 1965, becoming a Lab Assistant later that year. He became a Mathematician in 1970.



S. S. Braun, Manager Construction Refin-

INDIVIDUAL MOTORISTS URGED TO HELP CLEAN THE AIR THROUGH NEW PROGRAM

An appeal to help clean the air will be aimed directly at motorists during April through a nationwide campaign sponsored by companies in the automotive service business.

zines will tell drivers how to make a quick pollution check of their own by looking for the following symptoms.

Following a theme established last year in Shell's "drive for clean air", a full-scale publicity effort will ask drivers to join in "check your vehicle emissions month."

o a car that creeps ahead abnormally when stopped with the automatic transmission in gear.

The campaign will urge motorists to find out if their cars are big polluters either by going to service stations participating in the program or by performing quick do-it-yourself checks. It will further advise professional adjustments for cars that need it.

o an engine that doesn't stop when the key is turned off.

Shell has supported the drive since the planning stages. And many Shell dealers will undoubtedly join in to do their part for the environment on an individual basis.

o intermitten or constant rough idling.

o stalling.

o dark deposits inside the tailpipe or discoloration in the tailpipe area.

Participating service stations will post signs offering a three-system check for excessive emission. A 10-15 minute examination of a car's ignition, carburetion and emission-control systems will zero in on the big culprits. Minimal costs will vary from station to station.

o sluggish acceleration.

o misfiring.

o knocks or pings.

o gas or oil odors inside a car.

o an automatic transmission that shifts erratically.

o unusual oil consumption.

o a rusty engine oil dipstick.

o poor gas mileage.

The ads will point out that any one of the symptoms could be a warning of trouble. Two symptoms could mean a car is polluting more than the driver realizes. Three or more mean the odds are pretty good that a car is a big polluter and should alert the driver that he is courting real car trouble.

Full-page public service ads in Life, Sports Illustrated, Newsweek and other major maga-

OIL DROPS: REGISTER TO VOTE BY APRIL 6. JAYCEES HOLD POLITICAL RALLY

You may have already been bombarded by all the political campaign material being distributed by the numerous candidates. And you may have already made up your mind on some of the candidates.

But have you registered to vote yet? In Texas you must register by April 6 in order to vote in the primary which will be held May 6.

You must have resided one year in the State, 6 months in the county, city or town before you can vote in a particular election.

In case you miss the primary registration deadline, you still have another chance to register for the general election on November 7. This deadline is October 7.

Teenaged voters must be 18 by the date

SYMBOLS AND SHAPES TO BE FEATURED ON HIGHWAY SIGNS BEGINNING JUNE 1

The Texas Highway Commission has approved sweeping new changes in traffic control devices--signs, signals and highway markings.

The changes are in the Manual on Uniform Traffic Control Devices approved by the Commission. The manual incorporates changes prepared by the Federal Highway Administration based on recommendations by a national committee of the American Association of State Highway officials.

The new philosophy in signing recommended by the manual involves the changeover from words to symbols and pictures as part of an international move toward greater uniformity and clarity in road signs throughout the nation.

In Europe, the system of symbols and shapes has been used effectively for the past 20 years among multi-language countries where uniformity is necessary for efficient traffic control.

The new signs and other traffic control devices have been under study in this country since 1964. One of the primary reasons for the new system of symbols and shapes is that they will enable people of different national and cultural backgrounds to easily identify traffic signs while driving.

Panels explaining the new symbols will be placed under the signs so motorists won't be confused.

In Texas, the changeover will be gradual, with new signs going up on a replacement basis initially. The manual will become effective June 1, 1972.

Although there will be new symbols, shapes and colors, the majority of the existing signs will remain unchanged.

The new yield right-of-way sign will have a wide red border and white interior and will retain the word "Yield" in red inside the border.

Slash Means No

New prohibitive signs will all have a red circle with a slash cutting diagonally through the center which will mean "DO NOT" or "NO". The symbol inside the circle will show what is prohibited. For example, a sign showing a left turn arrow which is surrounded by a red circle and a slash means "No left turn".

of each election in order to vote in that election.

The Pasadena Jaycees, of which Charles Goeking, MTM Research, is a past president, is holding an Old Fashioned Political Rally tomorrow at the Pasadena Rodeo Grounds.

All Harris County and gubernatorial candidates have been invited for informal campaigning. No speeches will be made. The candidates will mingle with the crowd and handout campaign material.

The rally will be held from 11 a.m. to 6 p.m. The \$2 for adults and \$1 for children admission charge will cover the barbecue to be served at noon.

Yellow diamond-shaped signs will still stand for a warning, but some of the symbols showing hazards ahead will be new. The message, "MERGING TRAFFIC", on a yellow diamond-shaped sign will be replaced by a black arrow being joined by a smaller black line. It is hoped this will minimize confusion as to which stream carries the merging traffic.

School Signs Changed

A major change in the school advance sign and the crossing sign has been made. These signs will now be pentagon in shape, with the figures of two school children being shown in black on a yellow background.

Color will become more important in the new system.

Red will indicate stop or a prohibition, green will show movement permitted or give directional guidance, blue will signify motorist services, yellow will indicate a general warning, and black on white will be used for regulatory signs such as those for speed limits and for most guide and destination signs.

Orange, a new color in the manual, will convey construction and maintenance warnings.

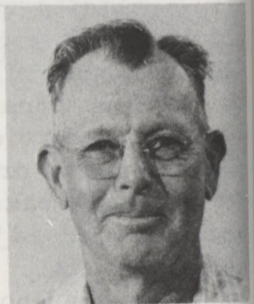
RETIRED PUMPER, OSCAR RAPE, DEAD

Oscar Rape, 66, died March 12. He was a retired Pumper #1, Dispatching.

He is survived by his widow, Mrs. Jewel Rape.

Rape first began working at Shell as a Laborer in 1936. He worked in different jobs until he transferred to Dispatching as a Gauger #1 in September 1941.

Funeral services were held Tuesday. Interment was at Forest Park Cemetery--Lawndale.



SHELLEGRAPH

Published by Shell Oil Company for its Houston Refinery and MTM Research-Houston employees at Deer Park, Texas.

Mrs. Josie Ochoa--Editor

Guess Who... Win a Prize If You Name 20 Correctly

1938 PHOTO OF ENGINEERING EMPLOYEES FEATURED AFTER MANY INQUIRIES



Because of the interest caused by the picture of the 1938 Main Office employees which appeared in the Shellegraph several weeks ago and since many inquiries were made about an hourly picture, here is the one taken of engineering employees in 1938. The picture was provided by J. J. Staton, pensioner, who is in the photo. Oldtimers might challenge

the younger employees to see how many of the 105 faces they can match with those of employees and pensioners. The first five employees and five pensioners to correctly identify at least 20 of the men in the picture will receive a choice of Shell Cleaner Polish, Shelltox, Air Freshener or No-Pest Strip. Call Ext. 541 or 301 (Bell) or mail list to Shellegraph.

AUTOMOTIVE EMPLOYEES HONORED AFTER SAFE YEAR AT DINNER



At the Automotive safety dinner recently were, l-r, Mrs. Charlie Vetter, C. Newton, Mr. Vetter, H. L. Shorts, Mr. and Mrs. Jack



Downey and Mrs. Shorts. Center are Mr. and Mrs. Sam Stewart, right, were Mr. and Mrs. Wes Clark.



Honorees included Jack Junell, Roy Shellabarger, Mrs. and Mr. John Kindla, Mr. and Mrs.



C. J. Mitchell, W. M. Thomas, R. Tanner and Mr. and Mrs. W. Tatman.



CLASSIFIEDS

FOR SALE

Air conditioners--18,000 BTU, 220, \$100, 11,000 BTU, 220, \$50; 6,000 BTU, 110, \$50. Telephone: 472-5988

1966 Buick LeSabre, loaded. 1966 Ford 2-dr. Galaxie 500, automatic & air, extra low mileage. Telephone: 472-7462

1963 Ford pickup, V8, standard shift, runs good, \$150. Telephone: 442-7685

Exercycle (used) in good condition, \$125. Telephone: 921-5480

Pickup, 1964 Ford custom, long wheel base, new battery, muffler, good mechanical condition. Some rust. Good tires, \$495. Telephone: 471-0612

Knit suits and dress (size 14). Telephone: 921-5480

Closet furnace, good condition, \$20. Telephone: WA 6-9801

'65 Valiant, 6 cyl., stand. trans., 2 dr., good tires, low gas mileage, excellent

motor, good work car. \$425. Telephone: 643-1750

1968 Ford XL, 390, air, power, disc brakes, excellent-clean condition. Last chance. \$1200. Telephone: 477-5448

House-Meadowcreek, 3 bed., 120'x110' lot, large oak trees, 6½% inst. rate, \$129 mo., buy owner's equity. 5481 S. Crooked Creek. Telephone: 944-0715

1967 Triumph "Herald" convertible, red body, new black top, new brakes, 36,000 miles, \$425. Telephone: 667-4136

Townhouse-Leawood, Alief schools, 2-2½-2, complete electric kitchen, drapes, central heat-air, all carpet, assume GI loan, \$21,500, low equity and monthly note. Telephone: 498-4922

Want To Buy

Army .30 caliber carbine. Must be clean. Telephone: 473-2268

WANTED: Portable oxy-acetylene brazing outfit, complete with size "MC" & "R" tanks. Telephone: 474-3344 evenings