

# DPMC Expansion Program Update

A number of new units were completed and put into operation at Shell's Deer Park Manufacturing Complex during 1978 as the largest expansion program in the Company's history moved into its fifth and final year.

Shell's expansion program began in 1974 and included more than a dozen new process, utility and environmental protection units. By the beginning of 1979 all major units were finished with start-up operations for the new central power station and olefins plant continuing into 1979.

Several resins related units began operation during 1978. They included a bisphenol of acetone (BPA) plant, a liquid epoxy resins plant, a solid epoxy resins plant and an ultra modern resins handling and distribution system.

BPA is an intermediate chemical used to manufacture epoxy resins. Shell is the leading producer of epoxy resins in the United States and already had two BPA plants at Deer Park.

Epoxy resins are used to satisfy a broad range of consumer and industrial needs. They are widely used as adhesives, corrosion resistant coatings, laminants for electrical components and durable-light weight building material.

The new resins handling and distribution facility incorporates sophisticated computer-based technology to improve resins handling operations. It is one of the most modern facilities of its kind in the United States and includes drumming, tank truck loading and rail car loading capabilities.

Shell also completed two new chloride incinerators in 1978 which reduce air emissions at the Complex. The new units are the second and third of their type at the Shell Complex. The first such unit was built in 1977 during an earlier phase of the construction program.

Prior to 1978, Shell had completed work on a number of projects including a phenol-acetone plant, a benzene extraction unit, a crude oil dock, a surface water clarifier and several multi-million dollar effluent treatment facilities.

ties.

Shell completed the startup of its new central power station in the first few weeks of 1979. This new facility provides additional steam and electricity for the complex's increased process operations.

Start-up activity for the olefins plant (OP-III), the largest portion of the expansion program, began in January. That unit is expected to be in full operation by mid-year. It will be the last part of the expansion program to be completed.

Olefins are building block chemicals used in the production of a wide range of petrochemicals used to make such things as synthetic fibers, synthetic rubber, plastics, vinyl and a wide range of consumer goods from aspirin to

automobile tires. The olefins plant will also produce large volumes of gasoline components and other energy products.

In addition to building and starting up new units, Shell continued an active training program in 1978. The complex's training organization graduated its 1,000 new employees from an operator fundamentals course which was adopted in 1977 to meet the company's increasing manpower needs.

Shell also sent more than 300 employees to a special fire training course at Texas A&M's world famous Industrial Fire Training School. The A&M training is part of Shell's continuous fire protection program which includes regular training sessions at the complex.

## DP Chamber Recognizes Efforts

Superintendent Ron Swofford accepted a plaque recognizing the DPMC's contributions to the Deer Park Chamber of Commerce. The plaque stated that it was given "as a token of our appreciation for your unrelenting efforts and continuous contributions to the success of our community."

Melba Eveler, president of the DP Chamber, presented the plaque to Ron, who is the Chamber's 2nd vice-president, at its 20th annual installation banquet held January 13 at the Houston Yacht Club.

"The plaque," says Ron, "was in recognition of the help that the DPMC has given over the years through its employees to the Chamber. And, although there have been many things done by many different individuals, the more outstanding contributors over the past year have been: Maxine Wallace, Bill Lafield, Bob Johansen, Ina McClure, Chester Guidry and Robert Taylor."

Maxine, secretary, Administration, worked with the Voice of the Chamber. Bill, manager, Community Relations, handled the Chamber's public rela-

tions. Bob, senior draftsman, Engineering Support, helped with the art work; and Ina, senior office assistant, Services-Reproduction, did the reproduction end. Chester, special assignment, General Services, and Robert, foreman, Maintenance North, helped with the electrical facilities for the Fall Festival.



Ron Swofford hangs plaque recognizing contributions by DPMC employees on behalf of the Deer Park Chamber.

## Chicago Tribune Cites Shell Situation

The following editorial, reprinted in its entirety, appeared in the December 11, 1978, edition of the **Chicago Tribune**:

"The good news out of Washington is that the Carter administration now says it will ask Congress to remove price controls from gasoline. Two days before that announcement, Alfred Kahn, the nation's chief wage-price guideliner, publicly blamed the government's regulations for the shortages of unleaded gasoline around the country. Such regulations, he said, can have a perverse effect.

"Indeed, they can and do. Take the case of Shell Oil. Like some other major refiners, Shell has had to ration high-octane unleaded gasoline to service stations because of unexpectedly high demand caused at least partly by good driving weather. Refineries shut down temporarily for repairs or normal maintenance also contributed to spot shortages.

"Besides having to ration its gas, however, Shell had to reduce its wholesale price by a half cent on December 1 and by another half cent on December 7. Now that's curious on the face of it. Normally, where there's more demand for something than there is supply at one price, the price rises until supply and demand balance at a new price. But here's Shell, with less to sell,

having to lower its price in spite of rising demand.

"Regulations are the reason. The government says a refiner can charge today what it was asking for its gasoline back in 1973, plus any increased costs for crude oil, machines, equipment and labor.

"What's wrong with this is what's wrong with government price controls in general. Suppose you're a refiner. Since 1973 you've invested in ways to cut costs through more efficient production. You do so in the expectation of being able to enjoy a bigger profit margin when supplies are low and

prices rise, or of being able to underse competitors when gasoline is plentiful.

"Consumers also benefit from your investment - directly from lower price and indirectly from the pressure on competitors to improve their efficiency in order to match your lower prices.

"But if you're government regulated then you can raise prices only by passing on increased costs. If you've used efficiency to cut your costs, then you actually get penalized. You're not allowed to make an extra buck as a reward for your efficiency.

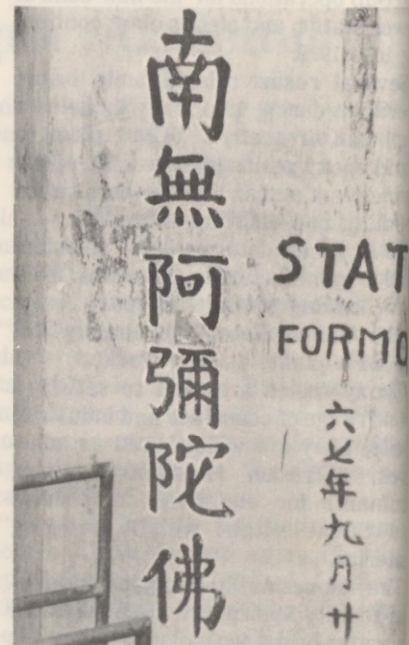
"Shell says that is what's happening

Continued on page 4

## Ghosts Banished

These Chinese characters, emblazoned in red, appeared one day on the channel side of the crude dock. Their meaning, a mystery to Shell dockmen, became even more mysterious as a smiling Chinese crewman, reading the message, was overheard saying, "No ghosts at your docks."

Later an inquiry was made of another Chinese crewman aboard the Kayeson. He translated the message in China's mandarin dialect as: "O my God!", an invocation for protection against ghosts. The smaller column records a date, but for what is still another mystery. At least ghosts are banished from our docks.

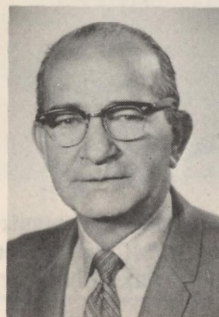


## Death

Retiree Kyle Stuart, 62, died January 20. At the time of his retirement in February 1977, he was an instrumentman No. 1 in Maintenance North with 30½ years of company service.

Funeral arrangements were handled by the Pace Steancil Funeral Home in Cleveland with burial in Splendor, Texas.

He is survived by his wife, Myrtle, who resides in Splendor.



Stuart

## Shell Well Benefits Park

Monahans Sandhills State Park is a lively place these days. There's a working oil well right in the middle of the picnic area.

The oil well dates from 1957, when it was drilled by Shell Oil Company just before the West Texas park opened. However it wasn't considered productive enough then to be worth the effort and was plugged. Nowadays, with new methods for obtaining the oil and the greater demand for energy, interest revived in the old well. About \$2,500 was spent just to locate the well, but its find

has proved to be an asset.

It was found in the large, level picnic area, but its location hasn't spoiled the area in any way, since tables and other facilities are on the other side. Now, as well as producing about 20 barrels a day, the well is a highly popular visitor attraction.

The oil rig was opened to viewers last spring, after being reactivated and fenced. Soon a push button recording will be installed with taped information about the well's history.

## Thorpe Looks Forward To China Stay

Steve Thorpe looks forward to immersing himself in the society and culture of the Chinese people. Steve, son of Clarence Thorpe, supervisor, Environmental Operations, will have a perfect opportunity to do just that over the next two years, while teaching advanced conversational English for future teachers at the Kunming Normal College in Kunming, the capital of Yunnan province.

The door to the People's Republic of China opened for Steve through his involvement with the Austin chapter of the U.S. China People's Friendship Association. It was through this association that he heard about the teaching position in China.

Feeling his knowledge of the Chinese language and his educational background were qualifications for the position,

Steve wrote the Chinese Liaison Office in Washington, D.C., to let them know he was interested in the position. Within a few months, he was offered the teaching position in Kunming. Along with teaching conversational English, he will probably teach English and European literature, American culture and social and political history. Steve will also edit books in English for correct word usage, sentence structure and grammar.

The University of Texas graduate first became interested in China during former President Nixon's 1971 visit to the country. At that time, Steve knew nothing about China, so he took a few courses and got hooked.

After graduating with a masters in history (Asian studies), Steve began working with the Texas Program for

Educational Resources on Asia (TEXPERA) at the University of Texas. TEXPERA, an outreach program for public schools, was established to provide Asian resource materials for teachers throughout the State of Texas.

Other past experiences, which will no doubt aid Steve, include: a year-long stay with a Chinese family in Taiwan, while studying the language; serving as a co-leader on a Fulbright Grant for a group study of India; and being a co-leader on an Association group tour of Mainland China during April 1978.

When asked what he thought about the U.S. recognition of the People's Republic, Steve responded with: "I am an advocate for recognizing China. Having an historical personality, I think that China is a legitimate government. It's realistic U.S. foreign policy to recognize China. With 970 million people, that government, and not Taiwan, represents these people. To say that Taiwan represents them is not realistic."

"I don't anticipate any overt friction between the two. Eventually, they will get together. It's an emotional thing now."

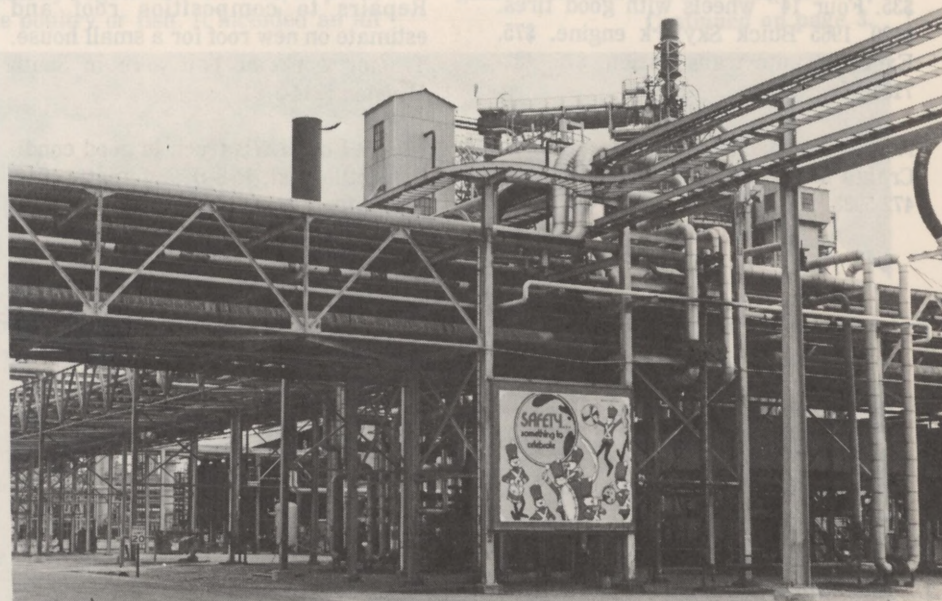
## Employee Tidbits

John T. Fisher, staff engineer, Engineering Services, presented certificate in recognition of his leadership as chairman of the Standard Committee SP63 "Armored Type Liquid Level Gages." Vern Burnett, terminal computer operator, General Accounting, plans European holiday for picture taking. Q. H. "Bud" McDaniel, lineman, Maintenance North, sports luxuriant beard.

Sandra Bradbury, employee relations assistant, Industrial Relations, surprised recently on her birthday with a beautiful gray, fur-trimmed coat - a gift from husband, Brad. Dave Marshall, on special assignment in Purchasing, has "most unusual" dinner guest. It has been reported by a most reliable source that Tildon Hebert, manager, Process Engineering-Planning, requisitioned an ant eater for the refinery administration building and that Services is diligently trying to locate one at a reasonable price, of course.

Maintenance North pipefitter C. Renfro Hervey's wife makes fresh butter - thanks to the cow they raise on their six-acre plot. L. Danny Savage, pipefitter, Maintenance North, receives furry surprise from co-worker M. Glenn Eberhardt. Finishing the Houston Marathon were Vince Moravec, senior engineer, Environmental Operations, in two hours, 57

minutes and Aamir Farid, engineer, Process Engineering-West, in three hours, 53 minutes. Maintenance North instrument man James L. Cook gives a lady a ride.



## "Safety . . . something to celebrate"

That's the message of the sign formerly located at the northeast corner of 12th and R Streets. How about your work habits? Are they something to celebrate? Remember, safety is an attitude, a habit, a way of life. So, work safely. Then, you, too, will have something to celebrate.

# Classifieds

## FOR SALE

Maytag gas dryer, white, good condition. 489-9696 after 6 p.m.

Custom chrome removal: trailer hitches, step bumpers. No job too large. 334-1967

3-2-2 brick home in League City, clean, wood fence, carpet, drapes, corner lot. 8½ percent VA assumption. \$48,200. 334-4624

3-1-1 house, clean, fenced backyard. 645-7928

1972 240Z Datsun. 476-4504

1978 Datsun king cab pickup, air, AM-FM cassette, 4-speed, console, excellent condition. \$5,395. 643-3864

1975 Buick Electra Sedan, P-S-S-B, air, 68,000 miles, clean. \$3,500. 482-7154 after 6 p.m.

8' Spanish stereo cabinet, dark oak, excellent condition. \$300. 448-2526

1971 Chevy tailgate for WB pickup. \$45. Rear window for 1971 Chevy pickup. \$35. Four 14" wheels with good tires. \$120. 1965 Buick Skylark engine. \$75. Excellent auto transmission. \$75. 482-7154 after 6 p.m.

New Craftsman paint spray gun. \$20. Craig FM 8-track stereo tape deck. \$20. 472-5988

U.S.D.A. registered, bearded Hervey Yorkshire brood hog, poor blood line, fair breeder. 334-1967

Practically new H78-15 radial tire. \$20. 946-9510

1978 Ford Econoline window van, customized by Leisure Time, refrigerator and sink. \$8,200. 471-4579

Maple king-size headboard. \$30. Maple chair, orange upholstery. \$30. Both in very good condition. 479-5852 after 5:30 p.m.

1966 Mustang HT, 6 cylinder, auto, air, new tires, custom paint, very good condition. \$1,750. 981-1317

New 1957 Chevy rear mount antennas (2). \$75 for both. Two Mickey Thomson tires and Chevy chrome rims L60 x 15. 479-4979

Corner lot in Newport on Lake Houston, utilities in, club membership included, will consider financing. 444-8749 or 453-3965

New contemporary velour couch, loose pillow back and side bolsters, brown tones. \$200. 487-3455 after 5 p.m.

## WANT TO BUY

Repairs to composition roof and estimate on new roof for a small house. Tractor work for half acre in South Houston. 944-5791

1971-74 Ford LWB truck in good condition, little rust, P-S-B, automatic. 944-7435 after 5 p.m.

## FOR SALE OR TRADE

1956 Ford F-100, completely restored \$3,700 or trade for 4-wheel drive. 474-4376

## FREE

Male Irish Setter. 643-4883

Schnauzer pup, about six months old. 472-1967

# Chicago Trib

Continued from page 2

in its case. In the first place, because Shell produced lead-free gasoline cheaper than its competitors, it was able to hold its price one-to-three cents a gallon below their price throughout this fall. The reward in the market place was that Shell's lower price made its sales of high-octane unleaded gas grow faster than its competitors.

"But then the government's regulations came into play. Because Shell has had fewer costs to pass on than its competitors, the regulations forced Shell to cut its price even more than Shell had already cut it voluntarily. The regulations, spelled out by Congress five years ago, are blind to market-place developments. So just when Shell and its competitors haven't enough lead-free premium to meet demand at present prices, the regulations are forcing Shell to charge still less in order to keep Shell's profit margin from expanding beyond what it was in 1973.

"It is that kind of perversity that wide-awake officials such as Mr. Kahn recognize in price controls and that makes the removal of those controls by Congress imperative."

P. O. Box. 100  
Deer Park, Texas 77536



Deer Park Manufacturing Complex

Published weekly by Shell's Deer Park Manufacturing Complex for its employees and pensioners. All inquiries should be addressed to **Shellegram**, Shell Oil Company, P. O. 100, Deer Park, Texas 77536.

**Dotti West - Editor**