



SHELLEGRAPH

HOUSTON
REFINERY

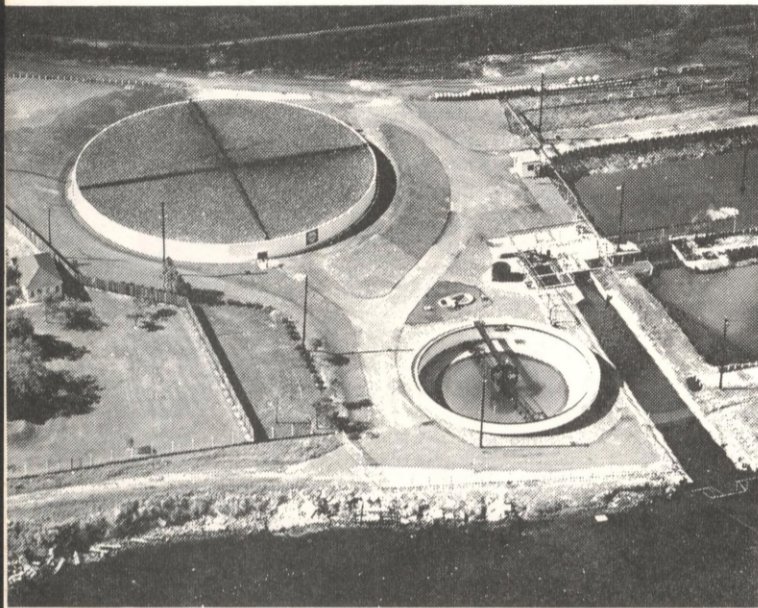


"Your Information HOT LINE"

No. 26

Tuesday, November 5, 1963

TO ALL EMPLOYEES



THIS huge new Biological Filter and Clarifier are recent additions to the effluent water treating facilities at the Refinery.

BIOFILTER GOES INTO OPERATION AT REFINERY

The Houston Refinery's new biofilter is now on stream and operating satisfactorily, according to Ben Norwood, Manager of the Refinery's Effluent Control Department.

"As a matter of fact, we found surface minnows in the discharge flume to the Houston Ship Channel the other morning", Ben reports, "and that's the first time I've seen fish in that area since the early '30's".

The new unit - a "trickling" filter - is comparable to the self-cleansing action of a natural stream. Effluent waters, sprayed across a huge bed of loosely-packed rocks come in contact with organisms on the rocks - a variety of bacteria, protozoa, algae, and fungi - which utilize the contaminants in the effluent water as food.

(continued on page 2)

PETE KEEGAN DIES

It is with regret we report the death of Pete Keegan, retired Administrative Superintendent of the Houston Refinery. Mr. Keegan died Saturday evening, November 2, at his home in Houston following a long illness.

Born in Pittsburg, Kansas, Mr. Keegan joined Shell in 1929 as a Safety Inspector at the Houston Refinery after working several years with the U. S. Bureau of Mines.

With the exception of two years served as Assistant Personnel Manager in Head Office, Mr. Keegan's entire career was spent here at Houston. During his distinguished career he rose to Manager of the Industrial Relations Department at the Houston Refinery in 1931, and to Administrative Superintendent in 1946.

Mr. Keegan had been retired since March 1961.

He is survived by his wife, Mrs. Ruth Keegan, four daughters and a son. To this family an expression of sympathy from their many friends is extended.

ANNIVERSARY CAKE

Recently the Refinery Cafeteria observed an anniversary--their 13th. That's the length of time Progressive Cafeteria, Inc. has been operating the local cafeteria. To celebrate the occasion, a large cake was baked and placed at the end of the serving line--past the cashier--and all diners that day had a free piece of cake waiting for them. Below, J. W. Burdett of the Research Laboratory reaches for his piece of "anniversary cake".



BIOFILTER GOES INTO OPERATION (cont'd.)

Thus the waste water as it is filtered through the rocks is purified in a manner similar to that which occurs naturally in a fast moving mountain stream.

The biofilter is the first of its kind at a petroleum refinery in the Gulf Coast area.

Measuring 172 feet in diameter and nine feet deep, it required 190 railroad carloads of trap rock, weighing approximately 11,400 tons, to fill the biofilter. This huge mass of carefully graded rock is supported on one course of high rate drain tile, sloped to a diametric flume.

Effluent water to be discharged across the biofilter is collected at two settling ponds adjacent to the facilities. From there it enters a feed sump and is then pumped to the biofilter where it is discharged across the rocks by means of a four-arm, reactor-type rotary distributor. Water jets flowing out of the distributor arms rotate this equipment to provide a uniform flow of water over and through the rock.

Once the water has passed through the bed of rock, it flows to a clarifier for one last treatment before being discharged into the Houston Ship Channel. The clarifier, 90 feet in diameter, is equipped with sludge and oil removal facilities.

There's one other installation at the biofilter area that promises to be quite a tourist attraction....a "living laboratory" adjacent to the clarifier where fish swimming back and forth in a fish pond filled with freshly-treated water from the biofilter offer "living proof" that Shell's effluent waters are not harmful to Gulf Coast fish life.

- - - -

DATE AND SITE CHOSEN FOR CREDIT UNION ANNUAL MEETING

The Credit Union is making plans for the Annual Meeting...and the date has been set. The 1964 Credit Union meeting will be held at the Music Hall in Houston, on Thursday, January 30, 1964. The Board of Directors of the Credit Union report that 1963 appears to be shaping up as a record year, and to celebrate this fact there will be Cash Prizes given to LUCKY members who are present at the meeting.

- - - -

A REQUEST FOR PICTURES OF "CHIPS"

From time to time requests come our way from all parts of the country - and world. The latest, an air mail letter from "Ijmuden, Nederlands", and addressed to "Shell Oil Compagnie, Houston Refinery Research Department, Box 2927, Texas, U.S.A." - was received by Dick Bannerot. A schoolboy wrote: "I am a collector of pictures of chips (ships), because I intend to be a sailor when I'll have got my school certificate. I take the liberty to ask you therefore to send me a few and I thank you very much for this indeed. I hope I'll have the opportunity in (the) future to thank you personally and perhaps even I'll be a member of your crew...."

Each letter receives individual attention...since that's the only way you could possibly handle the variety of requests contained in them. The above letter has been forwarded to our public relations people, and you can just bet that our Dutch schoolboy friend will be receiving his pictures of chips - er, ships - in the not too distant future.

- - - -

SERA BINGO PARTY

The next SERA Bingo Party will be held Friday, November 8, at the Shellwood Lodge, starting at 8:00 PM. There will be prizes....free coffee....and candy for the kiddies...For members only.

- - - -

C L A S S I F I E D S

FOR SALE: 1954 Buick Hardtop; \$195.
Call the Credit Union, GR-9-2886.

FOR SALE: Wooded lot, 60' x 120', in Forest River Estates (Channel-view School District); Call W. A. Carlton, GR-2-2933.

- - - -