

The Yellow Flag Is Flying In Refinery's Safety Drive

Refinery employees are finding out what the yellow flags mean.

Since the safety campaign, "Knowing's Not Enough," began, brightly colored yellow flags have been cropping up in various places around the Refinery. And more and more employees are wearing the blue and yellow buttons calling attention to the slogan, "Knowing's Not Enough."

Shell Pumpers And Crews Go To Todd Fire

The fire which broke out at the docks of the Todd Shipyards recently furnished a good test case for the Ship Channel Industrial Group.

A review of this fire points to one conclusion—the group, with its equipment, manpower and know-how are capable of handling emergencies within the member plants in a quick and efficient manner.

A timetable of the Todd fire supports this conclusion.

Shortly after 11:00 a.m. on the morning of June 28 a call was received over the Ship Channel Disaster Group radio network that a fire had started at the Todd Shipyards. A few minutes later another call was sounded at Todd, this time an All-Out Call for pumpers and pumper manpower to fight a fire which was now out of control.

By 11:30 both the Refinery and Chemical Plant had pumpers and pumper crews on the highway dispatched to the fire. The Refinery firefighters,

See TODD FIRE, Page 3

B. L. Stanley Is Named Director In Credit Union



B. L. Stanley

created by the resignation from the board of J. B. Bradshaw.

A member of the credit committee for the Credit Union since February 1952, Stanley will fill the position of director until the term expires next January. Bradshaw, who had served on the board since December 1955, resigned pending his transfer from Houston to Shell's Wood River Refinery.

Presently office supervisor in the Purchasing-Stores Department at the Chemical Plant, Stanley began his Shell career at the Shell-Union Oil Company's Cactus Plant in West Texas in 1943. In October 1945 Stanley came to the Houston Refinery, Chemical Division as a Stores foreman. In July 1949 he was named to his present position.

The campaign was opened officially Monday morning, July 18, when Refinery Manager J. A. Tench addressed Engineering Field personnel at a meeting in the Central Shops Building. Tench pointed out the appropriateness of the campaign's title by pointing to the type of accidents suffered by Refinery employees. In each instance knowing what to do was not enough to prevent the accident. Since then, small groups of employees have gathered to see a movie entitled, "Knowing's Not Enough." Before the campaign ends every Refinery employee will have had an opportunity to see this fine 28-minute film, recognized as one of the best industrial safety movies available.

The campaign is geared to the fact that just knowing how to work safely is not sufficient to insure safety—that we must put this knowledge into everyday practice. This safety drive is aimed at keeping every employee constantly aware of this fact—that knowing is not enough.

Besides the movie, yellow flags are located throughout the Refinery; bulletin board announcements call attention to the safety drive; large banners spell out the theme of the campaign; and the blue and yellow button worn by the employees indicate personal participation in the drive.

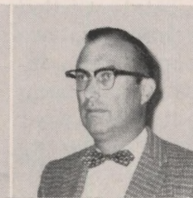
Fourie, Harris To Head Office In Chemical Personnel Changes



G. B. Carter



R. W. Fourie



D. M. Sheets



A. B. Harris

Several personnel changes affecting employees in the Industrial Chemicals and Plastics & Resins Divisions at the Chemical Plant have been announced by Glenn Purcell, Plant Manager.

In the Industrial Chemicals Division, G. B. Carter, pres-

P. & I. R. Answers Withdrawal Query

A question has been raised by a number of employees concerning the withdrawal of contributions from the Provident Fund: "If I do not make a withdrawal this year, am I eligible at some later date to do so?"

The Policy and Benefits Section of the Personnel & Industrial Relations Department answers the question in this manner, "You are eligible to withdraw up to 50% of your own contributions made to the Shell Provident Fund after January 1, 1959 at any time—subject to one limitation. Only one withdrawal may be made within any 12-month period."



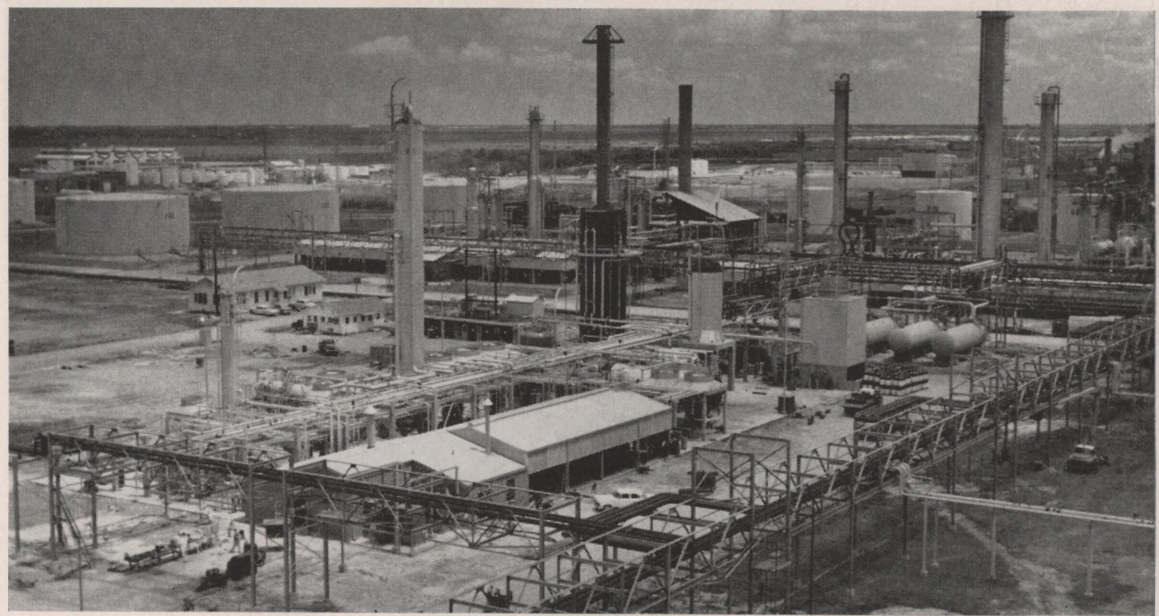
SHELL OIL COMPANY
HOUSTON REFINERY

SHELL CHEMICAL COMPANY
HOUSTON PLANT

VOL. 25, No. 7

HOUSTON, TEXAS

JULY, 1960



THIS PICTURE, looking southeast at the new D. H. T., shows the unit as it appears in operation. The unit was built not

for increased production but to improve the quality of furnace oil and diesel fuel processed at the Houston Refinery.

D. H. T. Unit Goes On Stream At Refinery

The Distillate Hydrotreater went on stream in early July. It was constructed in the east section of the Refinery, between the Cat. Cracking and Platforming areas.

The unit, designed to improve the quality of furnace oil and diesel fuel processed at the Refinery, has a rated ca-

capacity of 30,000 barrels a day, which was attained in its first days of operation.

The process employed at the D.H.T., known as the Shell trickle phase process for desulfurization, replaces the acid and doctor treatments of furnace oil components at the Treating Department.

Features of the D.H.T. which are new to Houston Refinery processing include extensive cooling by motor-driven-fan air-coolers, and the first Refinery application of remote automatic tank gauging and blending of feed components.

Feed for the unit consists of

light gas oil from Cat. Cracking, and light and heavy gas oils from the crude oil distilling units. The stability of the gas oil is improved at the unit by desulfurization.

Besides the furnace oil and diesel fuel produced at the unit, a small amount of gasoline is recovered and sent to the Aromatics Department for platforming. Gases from the fractionator go to the high pressure absorber for heavy ends recovery. The net product hydrogen stream is sent to Shell Chemical for hydrogen sulfide removal (for sulfur

See D. H. T., Page 2

Motor Truck Weigh Scales Being Built At Refinery Entrance Gates

A motor truck weigh scale, complete with disappearing gate, soon will be located in front of the Main Gate House at the entrance gates to the Refinery.

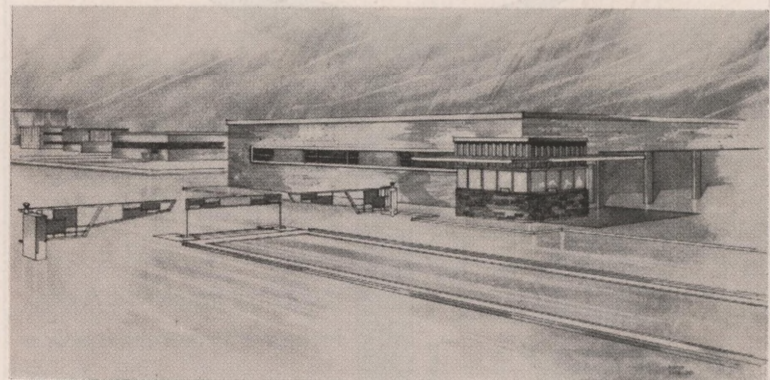
The Fairbanks-Morse Leve-tronic Motor Truck Scales are state certified for accuracy as an exact measurement for buying and selling bulk products. The 50-ton capacity scale will be capable of handling any cargo shipments which pass through the main gates of the Refinery.

The mechanism for the scale will rest in a five-foot deep pit

covered by a platform at the street level 10 feet wide and 60 feet long. A curb will extend along the two long sides of the platform.

Situated in the middle of the Main Road, the scales will be located just outside the main gates. The west section of the existing entrance gate will be moved back far enough to make room for the new section of disappearing gate. This new section of gate, located at the north end of the scale platform, lowers into the ground by means of a hydraulic sys-

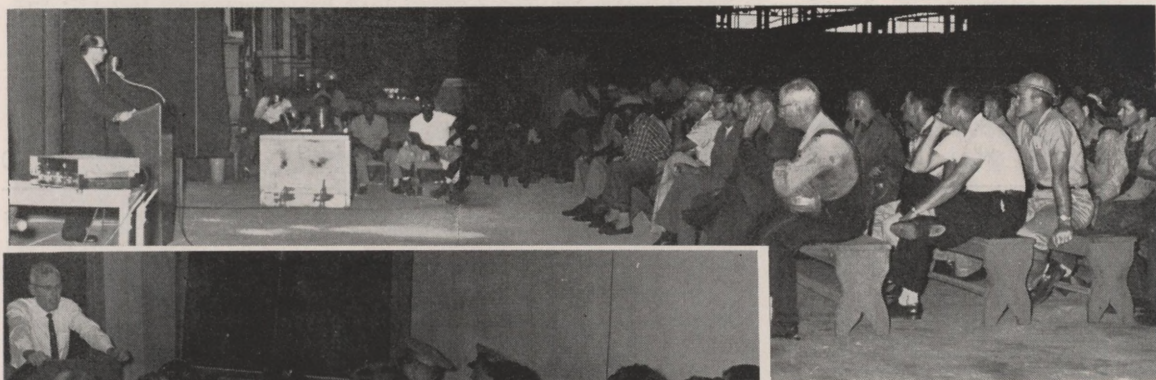
See SCALES, Page 3



THIS DRAWING by C. L. Budd of the Refinery Engineering Office shows the location of the motor truck weigh scales to be constructed at the Refinery entrance in the near future. The new section of gate lowers into the ground to permit traffic to cross.

See FOURIE, Page 3

Employees Learn About The Yellow Flags



AROMATICS DEPARTMENT MANAGER L. J. LAMBIN talks about safety with this group of Refinery employees prior to the showing of the movie, "Knowing's Not Enough" in the Crafts Training Room in the Central Shops Building.



WEARING their "Knowing's Not Enough" buttons, these three Refinery instrument men show they are participating in the safety campaign. From left to right are A. C. Rainey, R. C. Whitley and F. F. Lewis.

Motor Oil Drive Calls Attention To Need For Check



Horace Mayfield

Horace Mayfield Of Refinery Dies

"The most important 30 seconds in the life of your car" is the main theme of advertisements now heralding Shell Oil Company's 1960 motor oil sales drive, "Operation Golden Gusher."

Spotlighted in national magazine advertisements, on radio and TV commercials, in service station posters and point-of-sale displays, "the most important 30 seconds" theme refers to the time a Shell dealer takes to check the oil level of a customer's automobile engine and to ask when the oil was last changed.

The campaign's objectives are to impress the motorist with the importance of having his oil checked and to promote a preference for Shell motor oils — particularly Shell X-100® Premium.

Shell's program stresses the importance of changing oil every 60 days in the summer and every 30 days in the winter, but not to exceed 2,000 miles regardless of the season.

Advertising includes a series of ads in the three largest national magazines, LIFE, THE SATURDAY EVENING POST and READER'S DIGEST, with a total circulation of more than 23,500,000. Live and transcribed commercials will be used on 450 local radio stations and television commercials on 70 local stations. Service station posters will emphasize the value of a regular oil change, while product displays will focus attention upon X-100 Premium.

It is with regret the SHELLEGRAM reports the sudden and untimely death of Mr. Horace Mayfield. Mr. Mayfield, a special laborer in the Refinery Engineering Field Department, died on June 24 at the age of 47.

An expression of sympathy is extended to the widow, Mrs. Pearl Mae Mayfield, from Mr. Mayfield's fellow employees at Shell.

Employed at the Refinery in October 1943, Mr. Mayfield had accumulated over 16 years service with the Company at the time of his death. Hired as a laborer in the Engineering Field Department, he later worked as a yardman before becoming a special laborer in May 1957.

Texas petroleum industry employs some 229,000 persons (about 1 out of every 10 Texas workers) with wages of more than \$1.2 billion.

REFINERY MANAGER J. A. Tench discusses the safety campaign "Knowing's Not Enough" with Engineering Field personnel in the Central Shops Building.

ELIMINATE THE IMPS

Part of the new safety campaign at the Refinery is centered around four little "imps", representing dangerous worker attitudes. Named after the hazards, they are:

IMPatience — unable or unwilling to endure delay.

IMProvising — making do on the spur of the moment, not using the proper tools.

IMPunity — feeling free from injury or painful consequences.

IMPulsiveness — acting on an impulse or feeling.

Let's eliminate the "imps" by practicing what we already know. Knowing's not enough anymore.

D. H. T. —

(Continued From Page 1)

production) and then returned to the Refinery for fuel.

Main components of the unit include a 44 million BTU preheat furnace, catalyst filled reactor, heat exchangers, two product flash separators, reciprocating recycle gas compressors, a product stripper column, product coalescing and additive facilities.

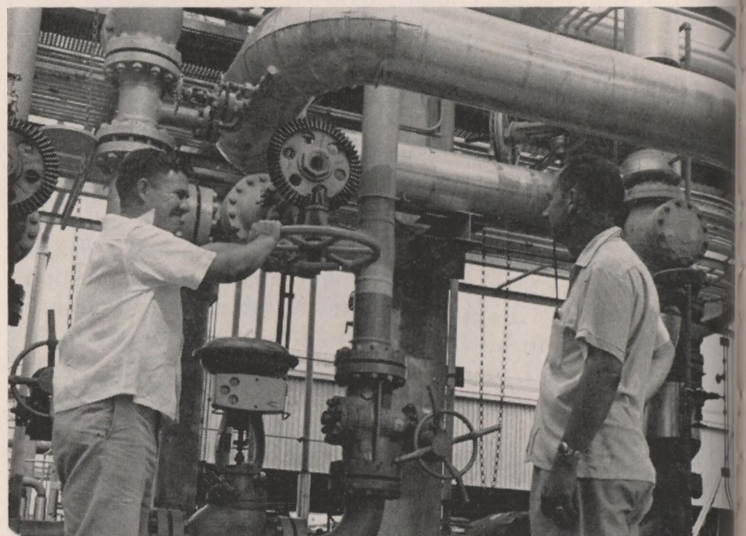
The main control room at the unit is air conditioned and equipped with a full graphic panel. Adjacent to the control room are the shift foreman's office, locker room, laboratory, electric switch room and utility room.

Personnel assigned to the unit are members of the Catalytic Cracking Department. V. A. Maggio, who as the assistant department manager is directly responsible for the operation of the unit, acted as liaison between operations and construction forces during the construction period. Staff personnel at the new unit are Operating Assistant J. W. Matthews, and Shift Foremen J. M. Gates, A. M. Gore, R. R. Lambert, and C. G. Scott.

The personnel who operate the new unit participated in an extensive training program prior to the startup date. For two weeks these men attended morning classroom sessions where the fundamentals of the D.H.T. operation were discussed. Then each afternoon the class moved to the unit for on-the-job training. During the week prior to actual startup, the assigned personnel began activating the unit, doing the preliminary work necessary for the unit to begin receiving feed stocks.



V. A. MAGGIO, far left, discusses operation of the new D. H. T. unit at a training session held for unit personnel prior to the start-up. Seated from left to right are J. W. Repp, J. W. Matthews, W. E. Barr, A. J. Ashworth, O. D. Horn, M. S. Smith, L. D. Harris, and D. W. Lanning, Technologist. Standing are R. F. Bliese, D. Robison, D. C. Hon, A. W. Patterson, B. D. Mankin, M. L. Booty, and W. L. Hartley.



GAUGER D. C. HON turns the valve bringing feed to the D. H. T. unit as Shift Foreman J. M. Gates observes. The unit went on stream in early July.

30.9^c

PRICE PER GALLON—INCLUDING TAX

10¢ TAX

TAKE A CLOSER LOOK !

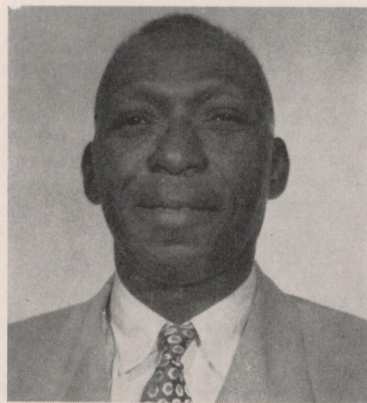
While the gasoline pump gauge shows the price per gallon, it tells only part of the story. The tax decal below it rounds out the picture. A close look reveals that the average motorist pays a tax equal to 47 per cent of the price before tax.

A. Brooks Retires From Refinery; Will Continue Living In Houston

One Refinery employee, Anthony Brooks, joined the ranks of the retired on July 1.

A resident of Houston, Brooks plans to continue living at his home at 517 East 39th Street. In his retirement he hopes to spend his leisure hours hunting and fishing and maintaining his home. He plans to do part-time work around his neighborhood. Brooks' career with Shell

dates back to September 1939 when he was employed as a laborer in the Refinery Engineering Field. In August 1943 he became a yardman, and in May 1957 a special laborer.



Anthony Brooks

Todd Fire—

(Continued From Page 1)

headed by K. J. Kitzmiller, included Fire and Safety Department's R. J. Griffin, B. J. Landry, and H. M. Miller. Members of the fire crew were L. E. Milholland, A. M. Seelhurst, B. C. Allen, E. Matthews, and C. M. Cunningham, the driver.

From the Chemical Plant, E. G. Saxon and J. H. Burns led a volunteer fire crew consisting of A. B. Cobb, M. W. Roseberry, and C. R. Ford.

When the Shell crews arrived at the scene of the fire they found the normal water supply to the hydrants had been exhausted. The docks were ablaze along a 450-foot front.

By noon the Refinery's Red Pumper had backed into position along the edge of the dock, the crews had strung 30 feet of suction hose to reach the water, and had started taking suction from the Channel at a vertical lift of 13'-9".

For the next three and one-half hours this pumper supplied water for six 2½" hose streams, each at 175 pounds of pressure. Besides the six streams furnished by this pumper, the Refinery's Hale Pumper took suction on the other side of the fire and supplied an additional two hose streams to the Houston Fire Department for the duration of the fire.

Refinery fire crews manned two of the hose streams while making the other six available to municipal and industrial fire crews.

The Chemical Plant pumper and fire crew were held in standby.

By 3:00 p.m. all that remained of the fire were small areas of smoldering timbers. Shortly after 4:00 p.m. the Shell crews were released to return home.

Besides proving the efficiency of the Ship Channel group in answering this emergency appeal, this fire also pointed up the ability of the Refinery's large diesel powered pumper to supply water in large quantities in critical situations.

The Red Pumper is one of two portable pumpers used at the Refinery to augment or supplement the stationary pumps. These pumpers can take suction from either of two fixed locations on the Ship Channel or at the Refinery's fresh water reservoir, as well as at many other sources of water around the Refinery.

Fourie—

(Continued From Page 1)

1957, and was named section leader in April 1959.

Sheets joined Shell Chemical at the Houston Plant Laboratory in June 1950 as a chemist. He became a senior chemist in January 1959 and was assigned as a senior technologist in the Plastics and Resins Division in April 1959. He held this position until his new assignment.

Assignment as a chemist in the Houston Plant Laboratory in October 1952 was the beginning of Harris's career with Shell. In August 1953 he was transferred to P&R Operations as a technical assistant. Assistant Manager of P&R Operations, a position reached in September 1957 was his next assignment. In November 1958 Harris became assistant manager of R Operations where he remained until April 1959 when he became assistant manager of Special Products.



Scales—

(Continued From Page 1)

tem in the scales pit.

When completed, traffic will be one-way into the Refinery along the east side of the entrance by the Gate House, and one-way out of the Refinery along the west side of the entrance by the Main Office Building. The traffic through the middle gate section across the weigh scales will be two-way for the cargo carriers.

The Main Gate House is currently being rebuilt and will house the mechanism which automatically records the weight of a vehicle when it registers on the scale. The guards will continue to control the opening and closing of all entrance gates, including the hydraulically-operated center gate, from a panel in the gate house.

N. S. Cardamone is the project engineer.



THESE PICTURES show the flag-changing ceremony which took place at the Refinery Tuesday morning, July 5. In the top picture, Refinery Manager J. A. Tench presents the new 50-star flag to the Boy Scout color guard. Then, in the bottom picture, the Scout representatives stand at attention as the colors are started up the flagpole.

Flag-Changing Ceremony Salutes New State Of Hawaii, Boy Scouts

Refinery employees joined with Scouting Shell sons and daughters in an impressive flag-changing ceremony Tuesday morning, July 5, at the Refinery.

The occasion was the raising of our new 50-star flag, recognizing the entry of Hawaii as our newest state. The ceremony also paid tribute to the 50 years of Boy Scouting in the United States, with representatives from the various branches of Scouting participating.

Employees Participate

Refinery employees, who are veterans of our five branches of the military service, joined with the Scout representatives to form an honor guard for the ceremony. All participants stood at attention as Refinery Manager J. A. Tench presented the new 50-star flag to a Boy Scout color guard from Troop 268 in Deer Park. Then, as the bugler played "To The Colors", the new flag was quickly hoisted to the top of the flagpole.

The five Refinery employees who represented the military services were:

W. E. Hall, Engineering Field, a veteran of the U. S. Navy with World War II service aboard the U. S. S. Bunker Hill.

K. W. Henry, Treasury Department, a former Marine Corps sergeant with military duty in both World War II and the Korean War.

T. C. Huffman, Engineering Field, the Air Force repre-

sentative who earned his wings as a staff sergeant on a B-17 in the European Theatre in World War II.

R. C. Myers, Research, a Coast Guard veteran with World War II service which included the North African Invasion and 11 Pacific Island landings.

A. F. Padilla, Engineering Field, a veteran of four years service with the U. S. Army in World War II with duty in the Pacific Theatre.

The Scout color guard, under the direction of Jason Huffman, listed four Shell sons as members. Jimmy Clarke is the son of C. J. Clarke, Chemical Plant; two brothers, Leon and David Gailey are the sons of W. L. Gailey, Chemical Plant; and Henry Buchanan is the son of H. H. Buchanan, Refinery. Completing the guard were Buddy Dollens and Steve Pate.

Shell Sons, Daughters

The Scouting representatives were all sons and daughters of Shell employees. Representing the Boy Scouts was Clarence Eldridge, whose father is the Refinery's C. E. Eldridge. Two Brownies took part in the ceremony. Mena Lucille Eldridge, daughter of C. E. Eldridge, and Deborah Allen, daughter of the Chemical Plant's R. V. Allen. The Cub Scout in uniform for the ceremony was Billy Ursprung, son of the Refinery's W. E. Ursprung. Tom-

See FLAG-CHANGING, Page 5

You Have A Business Interest In Your Shell Service Station

The future opportunity you have with Shell is directly influenced by what is happening at this moment in 23,000 businesses across the country.

These businesses, of course, are the service stations where Shell products are sold. Shell's ability to compete successfully depends vitally on how well Shell dealers are doing on the front line of business activity.

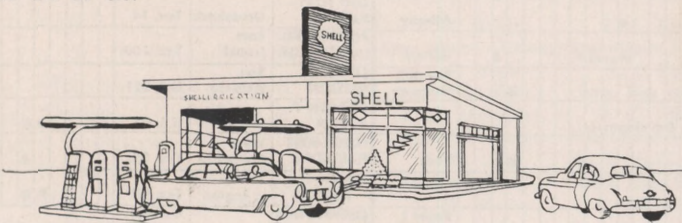
As Shell employees, we can give these dealers important support. The average motorist buys about 650 gallons of gasoline and 35 quarts of motor oil a year. Multiplied by 38,000 (the number of Shell employees) this amounts to a total sale of about 25,000,000 gallons of gasoline and 1,330,000 quarts of oil annually.

In addition, by patronizing Shell stations we give our Company's products an open endorsement, which promotes purchases of Shell products by our friends and neighbors.

Not only our action but our words count in building business for Shell. When we talk to our friends or relatives about Shell products—the research that goes into them or the performance they deliver—we are inviting potential customers to Shell.

If every employee got five acquaintances to buy Shell products, the Company could increase its annual sales by 123,500,000 gallons of gasoline and 6,650,000 quarts of oil.

And that means greater job security and opportunity for all of us.



YOUR VACATION CHART — by Carol Lane, Women's Travel Director, Shell Oil Company

The ideal vacation provides opportunities for rest, relaxation—and stimulation. You need time not only to unwind in peaceful surroundings and occasionally work out some forgotten muscles, but also an opportunity to share ideas with new acquaintances in new places.




Once you've decided upon the area to visit, begin your planning by tapping the various state and regional sources of free information about

accommodations, recreational or sports facilities, special events and points of interest. They'll be glad to help you realize the possibilities for enjoyment in any locality.

For a pleasant variety of experiences, fix a few goals as "musts," but keep your itinerary relatively flexible for "shun-piking"—or exploring the back roads. The turnpikes may get you there faster, but the "shun-pikes" take you to the heart of any area

where the unexpected adventure happens.

The following chart will help you prepare for one big summer vacation—or a series of week-end trips, or "tourettes." And since 80 percent of all vacationers travel by car, there's a special section of tips from Shell's experts for your automobile—assuming, of course, that it's in top mechanical condition, has been properly lubricated, has tire-changing tools and a good spare tire.

	PLANNING THE TRIP	WHAT TO PACK	FOR THE KIDDIES	FOR YOUR CAR	COST CUTTERS
RESORTS 	Write to state chamber of commerce for listing of accommodations. Compare rates and facilities before making choice. Make reservations two months in advance, enclosing a deposit. Friends may be a good source of information. Your local travel agent can help select resort and make reservations at no extra cost.	For women: four mix-match ensembles for travel, dress-up evenings, spectator and active sports; for men: both formal white and sports jacket; dress and sports shirts; slacks, shorts. For both: sweater, topper, rainwear, beach and sports gear.	For pre-school youngsters, take along some "digging" toys, slumberblanket or soft toy that they sleep with at home; storybooks. 3 dress, 4 play outfits, 2 bathing suits, extra sweaters and rainwear. The swimming pool, stable or recreation room keep older children occupied full-time.	If headed for beach, touch up any damaged chrome parts, wax and polish car as salt-water hastens corrosion. Place plastic spread or old shower-curtain over car seat to protect from sand and damp bathing suits. If headed for mountains, be sure to check brakes, clutch and tires.	Resorts with "package" rates, including free use of recreational and sports facilities and American meal plan, save spending on entertainment. Take advantage of "off-season" rates, often practically half. A travel iron cuts those high valet costs.
CAMPING 	For map of national and state parks describing camping areas and facilities, write: National Park Service, Department of Interior, Washington, D. C., or state chamber of commerce. Reserve campsites, where possible, before June. State Fish and Game Commissions supply fishing and hunting information. Most parks supply special events bulletins.	Essential gear: tent (with metal tent-pegs), sleeping bag, extra blanket, liquid-fuel cook-stove and fuel can, water pail, flashlight, matches in waterproof container, cooking utensils, axe, sheath-knife, several vacuum bottles, first-aid kit, metal mirror. Sturdy jeans or denims, sports blouses, sweater, warm jacket, rainwear, extra walking shoes.	If they're in grade school, let them "shake hands" with nature in parks by supplying handbooks on wildlife plus simple equipment for catching specimens. For an insect net, attach a dowel stick to a wire hanger around which you have sewn a yard-long cone of cheesecloth. A kitchen sieve helps catch tiny stream life.	Extra 5-gallon gasoline can, safety flares. Much gear can be transported in the car by removing back seat, filling area with equipment and covering with an air mattress "seat" for the small fry. Carry extra rope to lash gear to car.	Rent equipment (except sleeping bag) first time out. Improve a "refrigerator" for fresh foods from plastic bags covered with newspapers dampened with cold water. Some perishables fit into a wide-mouthed vacuum bottle with a little ice; place in stream for extra protection.
TOURING 	Oil company touring services supply maps and routings, spot points of interest. Historical and other societies offer sightseeing information. Several publications list motels and describe accommodations. Most motels will make reservations for you at your next day's destination, accept deposit to confirm it. With no reservation, start looking no later than 4:00 p.m.	Choose wrinkle-free clothes in neutral colors or prints which hide road dust. Skirts should have plenty of kneeroom, jackets or blouses roomy under arms for comfort during motor-ing. Wardrobe selection similar to resort wear, without formal wear for men and women.	Keep 'em comfortable. Wrinkle-free seersuckers, jerseys, allow wriggling, keep toddlers looking neat. Take along "mystery box" filled with some new, some familiar toys. Hand out one at a time to prolong interest. Pleasant rest area can be improvised in back of car. Stack about 4 pieces of luggage up to the level of the rear seat. Cover with an air mattress and blanket.	Pin a shoebag over the back of the front seat. In the pockets place road-maps, flashlight cosmetics or "fresh-up" equipment, odds and ends you want neat and handy. Check air pressure in your tires in the morning when they're "cold" for an accurate reading, say Shell's automotive engineers.	Picnics help stretch vacation dollars. For breakfast picnic right in car, pick up sweet rolls and fruit from a roadstand the night before. Fill vacuum bottle with hot coffee next morning and stop off at your convenience for roadside snack. For luncheon, make-your-own sandwich, fruit and coffee. Picnics also give children a chance to run off pent-up energy.
TOURETTE 	A series of week-end trips provide vacation "extenders." Obtain road map, draw circle with a 200-mile radius around your home town. Within that area, look for historical, recreational spots, natural wonders and other visiting treats (many are listed on map). Several publications list fine restaurants in almost every area. Go one way, come back another.	Wear a suit and blouse, pack a basic frock which can be dressed up or down with accessories. Most men prefer to drive in slacks and sport shirt, packing a suit and dress-shirt. To pack suit, place pants sideways in suitcase, with legs hanging out. Place jacket with shoulders toward rear of bag, on top of pants, with sleeves folded across jacket. Fold legs over jacket and bottom of jacket over legs.	Plan to stop every 50 miles or so for a "break" for a meal, sightseeing or just leg-stretching. Places of interest for children include animal farms, museums, caves or other natural wonders. Industrial tours are treats for children from ten through teen-age.	Any of the suggestions listed above may be applied. Here's a good place to remind you how to leave home. Stop any anticipated Saturday deliveries of milk, newspapers, laundry or cleaning bundles. Turn off all lights in the house, close and lock windows, empty and turn off refrigerator if necessary. Leave key with neighbor in case of emergency.	Picnics are still the budget's best friend, enabling you to splurge on a deluxe dinner. Tourist homes are usually lowest priced accommodations; many motels will add a cot for a child in your room at no extra cost. State parks have free recreation areas. Take along your own sports equipment.

Copyright 1960 by Shell Oil Company



TOP: REFINERY MANAGER J. A. Tench congratulates the insulators for their having reached one million hours of work without a disabling injury in this picture taken at the barbecue for the group. LEFT: "THERE'S PLENTY FOR EVERYONE," says R. D. Dunderdale who cooked the barbecue enjoyed by the insulators who attended.

Refinery Insulators Reach Million-Hour Safety Mark

It took almost 21 years to reach it—since October 21, 1939 to be exact—but the Refinery insulators topped the one-million mark for hours worked without a disabling injury on the first of June.

Engineering Field crafts have impressive safety records, indicating they are well on the way to establishing the million-hour mark themselves.

To celebrate the occasion a barbecue was held at the Staff Barbecue Pit at which time the group was praised for their splendid accomplishment by various members of Refinery management.

35 Years Service

Of the 32 craftsmen currently assigned to the group, only one man, E. D. Williams, can trace departmental service back across the full span of time represented in the record. Besides Williams, only two other members of the current group, N. P. Hand and A. W. Fields, have Shell service which dates back that far.



L. L. St. Pe
Dispatching (Refy.)

Master Mechanic W. J. Snow noted that several other

Flag-Changing Ceremony—

(Continued From Page 3)

my Roe, son of the Refinery's E. W. Roe stood as the Explorer Scout representative, while Sylvia Syfert, daughter of the Refinery's M. C. Syfert represented the Senior Girl

Scouts. R. B. Howell's daughter, Melanie, represented the Girl Scouts. Howell is a Refinery employee.

The bugler was Dwight Lankford of Boy Scout Troop 506 in Pasadena.

15 Years Service

- | | |
|-------------------------------------|--------------------------------------|
| S. Q. Gentry
Eng. Maint. (Chem.) | J. A. Perry
Operations (Chem.) |
| J. F. Hays
Eng. Fld. (Refy.) | R. L. Post
Eng. Fld. (Refy.) |
| J. W. Lemmond
Eng. Fld. (Refy.) | J. C. Tullos
Operations (Chem.) |
| C. O. Loyd
Treating (Refy.) | M. I. Underwood
Lube Oils (Refy.) |
| H. W. Morey
Treasury (Chem.) | R. W. Ward
P. & I. R. (Chem.) |

25 Years Service



U. G. Atkinson
Eng. Fld. (Refy.)



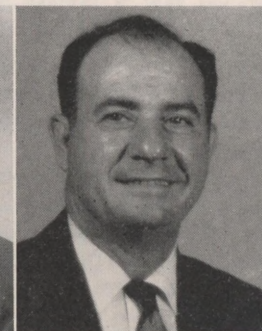
H. M. Baines
Eng. Fld. (Refy.)



W. A. Baker
P. & I. R. (Refy.)



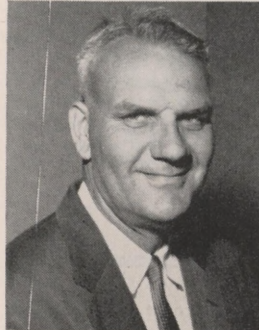
F. P. Bates
Eng. Maint. (Chem.)



J. V. Campo
Eng. Fld. (Refy.)



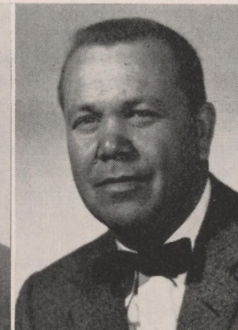
W. C. Felscher
Lube Oils (Refy.)



E. J. Galle
Eng. Maint. (Chem.)



W. B. Gloger
Eng. Maint. (Chem.)



J. M. Hatcher
Dispatch. (Refy.)



R. M. Hodgson
Eng. Maint. (Chem.)



J. M. Long
Treating (Refy.)



J. V. Newsom
Eng. Fld. (Refy.)



W. A. Phillips
Distilling (Refy.)



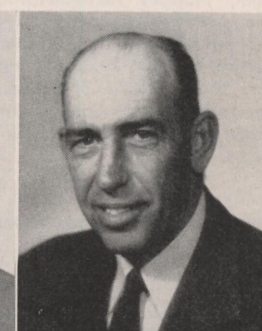
L. J. Schumacher
Eng. Fld. (Refy.)



C. M. Sharpe
Eng. Fld. (Refy.)



V. M. Stark
Operations (Chem.)



J. R. Wacey
Eng. Fld. (Refy.)



A. L. Williams
Treating (Refy.)

Safety Council Collects Accident Oddities

By the way — Has anything odd or unusual happened to you lately?

Something really freakish?

Have you, for example, lost your dress in traffic to a passing stranger?

Have any of you golfers shot two birdies with one stroke?

Nothing like that has happened to you? Ho, hum, what a dull life you've had!

The National Safety Council's annual round-up of freak accidents has turned up not only the foregoing oddities, but many more. The dizzy details:

Miss June Sandy, a highly proper young lady of 17, was riding her bike demurely down the crowded main street of highly proper Whitstable, England, on a busy Saturday afternoon when a passing motor scooter brushed against her. Whoosh! There went Miss Sandy's dress down the street on the scooter. Was she embarrassed!

Every golfer is always hoping for a birdie. But Buddy Graham, of Huntington, W. Va., got not one but two when his booming drive brought down a couple of sparrows who didn't even belong to the club.

Air Marshall William MacDonald, commander in chief of the British Royal Air Force in the Middle East, and a crack pistol shot, lined up runners in the RAF cross-country race in Nicosia, Cyprus. "On your mark . . . get set . . ." he called, then pulled the trigger of his pistol and shot himself in the foot.

When Earl Williams hopefully dropped his nickel in a pinball machine in Springfield, Ohio, the machine not only lit up but blew up. It took 15 stitches to put Williams back together again. Firemen said the machine was full of fumes from a car battery being recharged nearby, and that Williams' nickel triggered an electrical current which touched off the explosion. Williams is pitching pennies at cracks for excitement now.

Robert B. Richmond, of Winchester, Mass., and his 6-year-old son John changed seats — and cars — informally when their Model T touring car collided headon with a more modern convertible near Pembroke, Mass. The impact of the crash sent young John flying through

the air into the lap of the driver of the other car, John Swan Jr. Pop Richmond soared gracefully from his seat into the rear seat of the other car. Neither father nor son was hurt severely, nor was Swan. But they all agreed there must be an easier way to change seats.

Maybe they're making these little cars too little. A raccoon knocked one off the road when they collided near Rhinelander, Wis., driver John Welch ruefully reported. And a jackrabbit wrecked another little sportster in Alpine, Texas, to the dismay of owner Floyd Richmond. The latter contest may not have been quite fair, since it was a Texas jackrabbit.

Have you ever longed to get your hands on a reckless driver? Mr. and Mrs. Kenneth Talley, of Waco, Texas, had their chance when they saw a car veer off the street, careen wildly across a vacant lot and bang into a tree. They pulled the driver from behind the wheel, spanked him good and hard and put him to bed without his supper. He was their 3-year-old son Tommy. He had climbed into a parked car, turned on the ignition and let nature take its course.

The Case of the Lively Corpse occurred in Rome, Italy. Boarding an overcrowded bus in a heavy rainstorm, a resourceful passenger climbed to the roof and found a dry and cozy haven in a brand new coffin that was part of the bus freight cargo. Nearing his destination, he lifted the coffin lid and stuck out his hand just as two other passengers climbed to the roof. They stared, panicked, leaped from the moving bus, landed in the hospital — victims of too much bier.

You see a lot of arrogant drivers on the road these days. But you never saw one as stuck up as Paperhanger Leo Beasley was in Omaha the day a five-gallon can of quick-dry paste spilled all over him and his car when he made a quick stop in traffic. The only way Beasley ever got loose from the car seat was by sliding out of his pants right in public. And it took 400 gallons of water to get the pesky paste off the car. Beasley was so shook up by the stickup that he practically came unglued.

Well, that's what's been going on in off-beat circles in the last year. Sort of makes you feel that the oddest thing about life is that it's so odd, doesn't it?

MARRIED



Nancy Sue Holmes, daughter of the Refinery's G. A. Lindstrom, was married June 18 in the First Baptist Church at Jacinto City. The groom is Frankey Rhnea Bostick. The couple have made their home in Jacinto City.

Births —

Mr. and Mrs. L. A. Goldstein, a boy, Gregg Howard, 6 pounds 6 ounces, June 21. Goldstein is a technologist in the Refinery Technological Department.

Mr. and Mrs. D. A. Wiegand, a son, Michael Donald Wiegand, 5 pounds, 2 ounces, June 29. Wiegand is a technologist in the Refinery Lube Oils Department.

Mr. and Mrs. C. F. Thompson, a son, David Keith Thompson, 9 pounds, 6 1/2 ounces, July 4. Thompson is a pumper-gauger in the Refinery Dispatching Department.

Shell Chemical Promotes Contest For Pest Control

Shell Chemical Company, in cooperation with the National Association of County Agricultural Agents, has instituted a farm pest control contest for county agricultural agents.

The competition is designed to emphasize the need for controlling insects and other pests on the farm, and to show the important role that visual aids play in communicating such information to a farm audience.

The contest is open to all county representatives of state Agricultural Extension Services in the United States who are members of the National Association of County Agricultural Agents.

Each entrant will be judged on three phases of the program he is conducting within his county to control pests such as insects, mites and nematodes which threaten agricultural and livestock operations. The three phases are: (1) the total pest control program within his county; (2) a single control project within this program; and (3) the use of visual aids (motion pictures excluded) to communicate the results of the single control project to a farm audience.

Prizes to be furnished by the Agricultural Chemicals Division of Shell Chemical will be awarded on both state and national levels. In the state competition these include choices of a television set, photographic or power tool equipment, or a tape recorder for first place winners; photographic equipment, luggage or power tool equipment for second place winners; and photographic or power tool equipment for third place winners. The national winner will receive an all-expense paid trip for two to the Annual Convention of the NACAA in Miami, Fla. Second and third place winners will receive engraved plaques.

Judging for the state competition will be conducted by committees set up by State County Agricultural Agents Associations, and all entries must be received by September 1, 1960. First, second and third place winners will be named by September 16, 1960.

Judging for the national competition will be conducted by Bruce, Richards Corporation, an independent judging organization, which will select a national winner from among first place winners on the state level.

10 Years Service

- H. F. Buchholz
Research (Refy.)
- G. A. Derr
Shipping (Chem.)
- B. Dickson
Eng. Fld. (Refy.)
- R. Fortson
Eng. Fld. (Refy.)
- R. W. Fourie
Res. & Dev. (Chem.)
- O. King
Eng. Fld. (Refy.)
- O. Mitchell
Eng. Fld. (Refy.)
- S. J. Robinson
Eng. Fld. (Refy.)
- M. E. Williams
Eng. Maint. (Chem.)

Groups Visit Chemical Plant



RECENT VISITORS to the I. C. Research & Development Laboratory at the Chemical Plant were these members of a special summer science course for high school students in Houston and their teacher. The students toured several of the individual

laboratories, watched the glass blower build glassware, and saw a pilot plant in operation. Serving as hosts and guides were (from left to right) R. W. Maners, T. D. Funkhouser, P. V. Harper, and M. H. Colditz.



ANOTHER group to visit the Chemical Plant recently were these twenty-three future secretaries from Deer Park High School. The young ladies and their teacher, Mrs. Marie Tapp, toured the Treasury and Purchasing-Stores Departments. They were shown the equipment and facilities used by these departments and were able to see firsthand day-to-day business operations. Upon completion of the tour, they were guests of the Treasury Department for lunch. Shown with the students are Treasury personnel are (left to right) F. J. Szopa, G. M. Seaman, W. P. Brady, R. C. Braud, P. E. Ohls, G. G. Barnes, C. G. Mabee.



EIGHTEEN MEMBERS of the third-year class in Chemical Engineering from Rice University and their professor, Mr. Bryce Anderson, recently toured the Chemical Plant. They inspected the facilities of the various operating departments and received general explanation of the processes involved. Shown with the group are the staff members who acted as guides and hosts. From left to right are J. W. Fourie, R. L. Robertson, R. H. Slaughter, and C. E. Waheg.



SEVERAL EMPLOYEES from Engineering Maintenance and their wives recently visited and toured the Chemical Plant. The tour was arranged through their department. The employees and their wives are (left to right): P. M. Bell, J. A. Marr, Mrs. Marr, Mrs. Bell, J. W. McKinney, Mrs. McKinney, M. J. Curtis, Mrs. Curtis, Mrs. Rogers, and C. H. Rogers who served as host and guide.

R. W. Williams Is Named Gateman At Chemical Plant

R. W. Williams, Machinist Helper, Engineering Maintenance, Chemical Plant, was recently named a gateman in the Plant Protection Section of the Personnel and Industrial Relations Department. He replaces L. Asbill who is moving to the Schedules and Records Office—Engineering Maintenance.



R. W. Williams

Williams joined Shell Chemical as a laborer in Engineering Field in January, 1956. In April, 1956 he was assigned to Operations as general operator helper. Ray was assigned to Engineering Maintenance as a machinist helper in February, 1959, the position he held until his new assignment.

Square Dancers Pick Gil Barnes As Their Prexy

G. G. Barnes, Treasury Department, Chemical Plant was recently elected president of the Square "D" Dance Club of Pasadena.

The club was formed in July 1957 to provide its members with clean and healthful fun. One of the activities of the group is to teach beginners how to square dance. Classes are started several times a year and usually last for approximately three months.

Mr. and Mrs. E. L. Kolb, Mr. and Mrs. J. D. Oxford from the Chemical Plant and Mr. and Mrs. W. B. Grimes from the Refinery also are active club members.

Anyone desiring additional information about the club and its activities should contact Barnes at the Chemical Plant.

FOR SALE BY OWNER

4 bedroom ranch style on wooded lot, 2,000 sq. ft. living area plus double garage, 2 tile baths, lots of built-ins. Community boat slip, \$18,000, terms available. El Lago Estates, Rt. 1, Box 192, Seabrook. Phone—Kemah 4-7211.

Collecting Match Boxes Strikes Fancy of Chemical Technologist

F. H. Heise, Technologist at the Chemical Plant, recently had a four-album collection of match covers on display at the Park Place branch of the Houston Public Library. Fred has been collecting covers for approximately six years and specializes in covers from motels, hotels, restaurants, and transportation facilities.

Match-cover collecting may be considered a strange hobby by some people but there are over a million collectors in the United States. They have formed more than 15 clubs which serve as sources of information about new issues and as a meeting place for trading and purchasing covers. In addition to the clubs there is an annual convention held with collectors from all over the United States in attendance. This year the meeting is scheduled for Boston, Mass.

Collectors tend to specialize their efforts due to the large number of issues available. The match industry now has an annual production of over 15 billion covers.

The collectors have devised a system of symbols, terms, and abbreviations. Covers are described by the source of the advertisement, by their shapes or design, and by the number of matches in a cover. Presently there are 41 various sources of advertisements such as banks, drug stores, that are judged in the annual competition sponsored by the match industry.

The more common shapes or designs are "regular," which usually has 20 sticks or matches, "aristocrat" with 30 sticks, and "royal flash" with 40 sticks. In addition there are "contour," "odd-strikers," and "matchorama" covers produced. Contour covers have peculiar shapes reflecting the source of the advertisement or the product being advertised. Odd-strikers are those covers

that have the striker as part of the advertising design on the cover. The matchorama classification is the newest design and usually features an actual photograph of the source of the advertisement.

Most collectors talk about their activities with a missionary's zeal. Also they are always ready to make a trade or talk about purchasing. Fred is no different and has indicated that he is ready to talk trade with any interested match-cover collector.

Busy Beauty



Judy Stephens was a busy young lady this past year at Milby High School in Houston. And all indications point toward an activity-filled semester next year when she is a high senior. She has been named chairman of next year's Kaleidoscope, a talent show put on annually by the Milby Journalism Department. The variety show is staged at the Cullen Auditorium on the University of Houston campus. She also has been elected first vice-president of the Girls Booster Club. An avid basketball fan, Judy was chosen Basketball Sweetheart this past year. Judy is the daughter of D. W. Stephens, Chemical Plant Purchasing-Stores Department.

Volunteer Red Cross Workers



Mrs. Robert M. Oakes, right, as chairman of the Canteen Service, is one of the top Red Cross volunteers in Harris County. She is shown here inside the Red Cross disaster mobile kitchen with Mrs. W. Glen Tate, chairman of Disaster Canteen. Canteen volunteers serve regularly at Veterans Administration Hospital or Ellington AFB entertainments, Board or committee luncheons at the Chapter House, and—above all—maintain readiness to move into instant action in event of disaster. Mrs. Oakes says Red Cross needs additional volunteers to serve in Canteen Service and in other capacities.

Three Shell-Sponsored Baseball Teams Are Crowned Little League Champions



PRESENTING THE SHELL CHEMICAL INDIANS—Champions of the Pasadena American Little League. Kneeling across the front row are the three Shell sons who played for the team: Bobby Flynn, Terry Benjamin and Larry McElroy. Standing in the middle row are Kenneth Ford, Danny Spain, Champion Traylor, James Watts, Doug Barnhart. In the third row are Billy Epps, Mickey Patterson, Ronnie Hanna, Ronnie Spain, and Wayne Barnhart. Standing at the back are Harry Spain, Manager, and H. A. McElroy who served as assistant manager this year.

Three Shell-sponsored Little League teams monopolized the championship of the leagues they participated in this season.

The Shell Oil Giants, with Chemical Plant's B. Powell the manager and V. R. Reese the assistant, won the second-half title in the Deer Park Minor League. The Giants then met the first-half winners, the Cardinals, for the title, and the Giants prevailed, 9-2. For the year the Shell team compiled a record of 10 victories and five defeats in the six-team league.

Champions for the second year in a row, the Shell Oil Dodgers finished the season with a record of 13 victories and two defeats in the Deer Park Major League. Six players from the Dodger team were chosen for the Deer Park All-Stars, including four Shell sons. The All-Stars, managed by the Refinery's I. D. Wheat and J. H. Williams, list Refinery sons David Wheat, whose father is I. D. Wheat; John Merritt, son of J. C. Merritt; Scott Ramsey, son of J. D. Ramsey; and Royce Kerbow, whose father is E. E. Kerbow.

Rounding out the roll-call of champions is the Shell Chemical Indians. The Indians, sponsored for the second year by Shell Chemical Company, were pennant winners in the Pasadena American Little League.

With a record of ten victories and four defeats, the Indians' roster is dotted with the names of Shell sons. Playing for the league winners were Bobby Flynn, son of the Refinery's R. B. Flynn; Terry Benjamin, whose father is K. D. Benjamin, Refinery; and Larry McElroy, son of the Refinery's H. A. McElroy. McElroy served as the assistant manager of the team this year.

Terry Benjamin was selected from his team to play for the league All-Stars in the playoffs.

Harmon Re-Elected As Chapter Director

For the sixth consecutive year, the Refinery's Iris Harmon has been named to the board of directors of the Houston Chapter of the National Association of Accountants. As director of communication for the coming year, Iris will be responsible for preparing the monthly news bulletin, the annual program and roster, and monthly meeting notices. She is the only female member on the board.

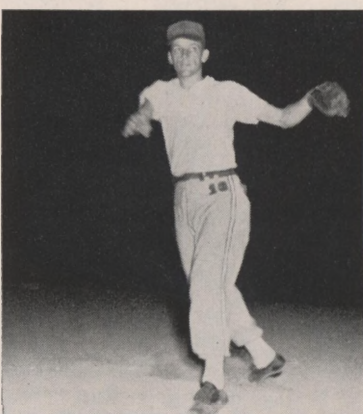
The association meets monthly in Houston at Weldon's Cafeteria. One other Refinery employee, R. A. Ress, is a member of the local chapter.

First recorded use of oil in North America was in 1543 when survivors of DeSoto expedition patched boats with oily stuff found near Sabine.



WAITING FOR THE GAME to get underway are these Shell Refinery softball players. Across the top are A. R. Pustejovsky, J. H. Whittington, W. E. Bailles, H. D. Williams, R. D. Weatherford, and C. K. Hebert. Kneeling are G. A. King, R. F. Tucker, P. R. Myers, and L. B. Riggs. All of the players are Refinery employees except King who is at the Chemical Plant. In front is Whittington's son, Mike.

TOP TWIRLER



R. F. TUCKER flips in a fast ball during a game for the Shell softball team.

Refinery Nine Takes Softball Title At Milby

The Shell Refinery softball team won the championship of the Industrial League at Milby Park this year with an undefeated record of twelve straight victories.

Managed by the Refinery Engineering Field's L. B. Riggs, the Refinery nine, sponsored by the SERA, advanced to the city playoffs in Houston. In their opening game encounter with Brown & Root the Shell team was eliminated by a score of 7-4, for their only loss of the season.

R. F. Tucker, Engineering Services, was the pitcher in all but two of the games played by the Refinery team, and compiled an impressive string of shutouts.

Starnes' Son Goes To National Meet

David R. Starnes, son of D. O. Starnes, G Operations, Chemical Plant, was recently elected to attend the National Junior Achievement Convention which will be held at the University of Indiana in August.

David was very active in his Junior Achievement Company, Petico, Inc. where he was production manager. As a result of his excellent performance, he was given the Junior Executive Award by the members of his company.

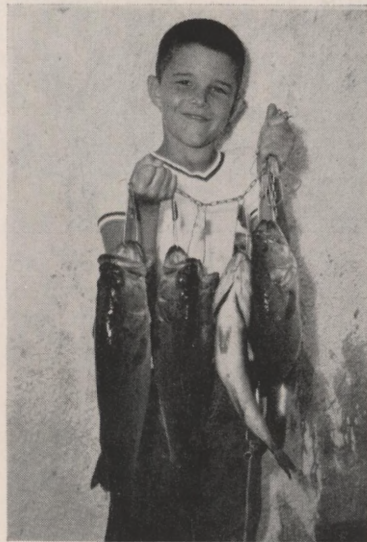
In addition to his activities in the J. A. Company, David also serves as Senior Choir pianist at his church. He is considering a dental career after graduation from high school.

FISHERMAN'S CORNER



Long Way To "Fishing Hole"

Port Isabel may not be the best place to fish in Texas, but you might have a hard time convincing the Refinery's A. J. Marches it isn't. In fact, Marches thinks enough of the area to make the round-trip of over 700 miles as often as he can. A recent trip netted a fine catch of speckled trout and red fish, as this picture testifies. And Marches said the "big ones" were not biting that time, either.



Birthday Bass

NINE-YEAR old Michael Thomas was given a new rod and reel for his birthday recently by his parents, Mr. and Mrs. J. A. Thomas. It didn't take long for Mike to try out his equipment—and this picture shows the results. These bass were part of an even dozen caught by Mike and his fishing companion, Bill Bradshaw, on a lake near Brenham. Bradshaw is the husband of the Refinery's Lois Bradshaw. Mike's father is assistant manager of Engineering Services at the Refinery.

SHELL OIL COMPANY
P. O. Box 2527
Houston 1, Texas
Return Postage Guaranteed

Sec. 34.66 P. L. & R.
U. S. POSTAGE
PAID
Deer Park, Texas
Permit No. 1