



# SHELLEGRAPH

HOUSTON  
REFINERY

"Your Information HOT LINE"

No. 43

Friday, January 10, 1964

TO ALL EMPLOYEES



MUTUAL INTEREST: F. E. Lee (right) checks on the latest sports news with his son, Alan.

CREDIT UNION TO HOLD ANNUAL MEETING  
JANUARY 30; ANNOUNCES INTEREST  
REFUND AND DIVIDEND RATES

The Shell Refinery Employees Federal Credit Union will hold its annual meeting Thursday evening, January 30, at the Music Hall in downtown Houston. The site of the meeting was changed this year to accommodate an anticipated turnout which in past years has swelled previous meeting sites to capacity.

Last year's meeting attracted approximately 1800 members to the Cullen Auditorium. The Music Hall's nearly 4,000 seating capacity promises to be more than adequate, and add to the convenience of everyone.

The Music Hall is located adjacent to the Sam Houston Coliseum, at Capitol and Bagby streets.

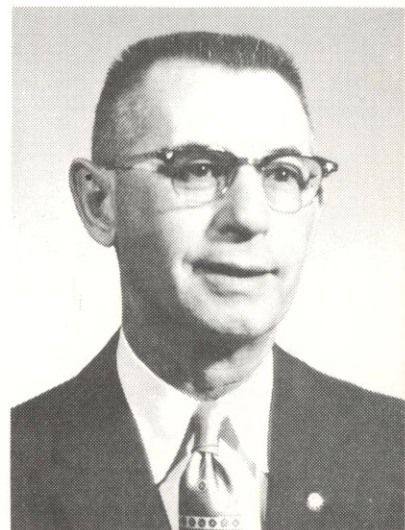
The meeting is scheduled to begin at 7 PM.

On the program agenda will be a review of the past year's operations, reports from the various committees of the Credit Union outlining 1963 activities, and the election of three board members and three credit committeemen.

Door prizes totaling \$1,000 will be given at the meeting. To win, a member must either be present, or at work at Shell and represented at the meeting by his immediate family. Following the meeting, refreshments will be served.

Other news from the Credit Union includes the announcement that a dividend rate of 4.68 per cent has been declared for shares in members' accounts in 1963. In addition, a 30% interest refund is being made to those members paying interest on loans during the last year. Rather than

SERVICE  
- BIRTHDAY -



F. G. TILTON  
DISTILLING DEPT.  
25 YRS.

SHELL SON NAMED TO STATE FOOTBALL'S ELITE  
CIRCLE

The world of 17-year old Alan Lee revolves around footballs, baseballs, hours of practice, and moments of glory.

Its been that way for the last half dozen years - since junior high school.

Now on the verge of closing out his high school career at Pasadena, Alan, whose father is F. E. Lee of the Refinery's Thermal Cracking Department, has some big decisions facing him. What comes next?

If you're six feet tall, tip the scales at around 200 pounds, bright and alert - and just been named to the second team All-State football team, lots of people want to help you make one of those big decisions: which college to attend...people like coaches and members of alumni associations. Already Alan has been contacted by several Southwest Conference schools as well as many others. All seem interested in pointing out the advantages of higher education at their respective alma maters...and seeing Alan in the colorful Saturday afternoon grid garb

of their schools.

REMEMBER  
THE  
HOT LINE  
EXT. 777

(continued on page 2)

(continued on page 2)

SHELL SON NAMED TO ELITE CIRCLE (Cont'd)

So far Alan has not decided which school he'll attend. He's interested in a pre-dental course of study. It's a subject he may already know something about. From his linebacker post with the Eagles these past three years, he has probably helped create some "work" for present-day dentists.

When it's not football, then baseball is the thing. Alan is the catcher for his Pasadena team, and right now he's looking forward to the coming season. When asked which was his favorite sport, Alan's answer gives you an indication as to why he has been able to excel in both. "When it's football season, I like football best. When it's time to play baseball, I prefer baseball."

In either case, Alan seems destined to continue sharing his interests between the two sports in years to come....and his proud parents would have it no other way.

- - - -

SERA BOWLING NOTES

Curt Stanberry rolled 245-626 in the Shell Mixed Bowling League this week to set new season records for both high individual game and series among the men. His team, league-leading Super Shell, split with the Hybrids, 2-2, and hold an eight-game lead over the rest of the field. For the women, Doris Winner shot a 131 high game, and Ann Washburn hit a 473 series. The Hybrids recorded the high team game and series for the evening with marks of 908-2491.

- - - -

CREDIT UNION (Cont'd)

crediting these sums to the individual member's account - as in the past - checks are being mailed this year to each member who receives at least \$5 in either dividend payment or interest refund. This decision was reached by the Board as a result of the large amount of surplus money currently on deposit with the Credit Union.

- - - -

OIL FACTS

Fuel requirements of existing jet airlines pale in comparison to the anticipated consumption of the supersonic transports of the 1970's.

Today's long-range jets consume about 18,000 gallons of fuel each eight-hour day. Jets of the future are expected to burn some 14,000 gallons in a single hour.

- - - -

...IF THE VENDING MACHINE DOESN'T WORK...

Buddy Yannazzo, on Refinery Ext. 539, is the man to notify if the vending machine in your area is not operating properly.

- - - -

C L A S S I F I E D S

WANT TO BUY: Remington rifle, Model 725 or 722; cal. .243, .244, or .257. Call R. A. McCafferty, GR-3-2156.

FOR SALE: Three-bedroom home; one bath; one-car garage; fenced yard; located in Deepwater addition. Call GR-3-0707.

- - - -