



"Your Information HOT LINE"

No. 66

Friday, April 3, 1964

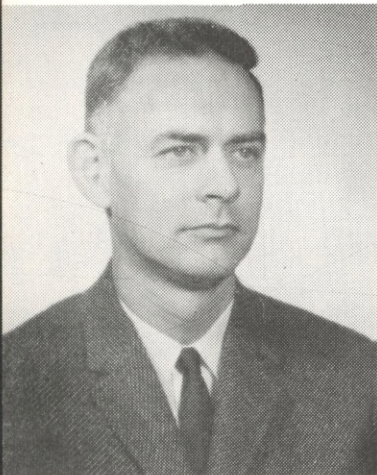
TO ALL EMPLOYEES

A. G. SMITH TO REPLACE E. W. REILEY AS PROCESS SUPERINTENDENT AT HOUSTON REFINERY

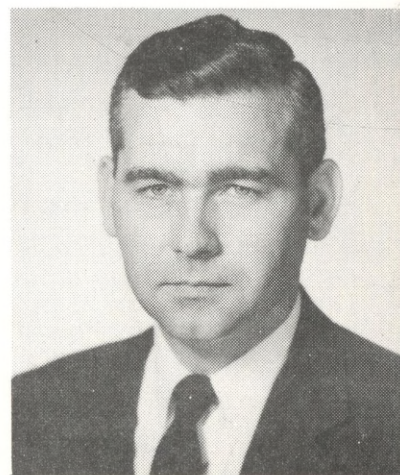
E. W. Reiley, Process Superintendent at the Houston Refinery since January 1962, has been transferred to the Martinez (California) Refinery in the same capacity. His replacement at Houston is A. G. Smith, currently the Manager of the Administrative Services Department in Head Office.

Born in Hinton, West Virginia, Reiley is a graduate of West Virginia University with a B.S. degree in Chemical Engineering.

(continued on page 2)



E. W. REILEY



A. G. SMITH

SHELL PEOPLE IN ALASKA SAFE

All Shell people in Alaska and their families have been reported safe and uninjured following the earthquake which wreaked havoc there last Friday night.

Damage to Shell's Exploration & Production and Marketing facilities in the region was not significant.

The drilling rig Glomar II, which operated last year in Cook Inlet for Shell, Richfield Oil Corporation, and Standard Oil Company of California, as partners, was at sea returning to Alaska at the time of the earthquake and was not damaged. The services of the men and equipment of the rig have been offered to Governor William E. Egan of Alaska, on behalf of the three companies, for use in restoration of essential services.

There was no known damage to the Middle Ground Shoal No. 1 well in Cook Inlet 60 miles southwest of Anchorage. This was a wildcat drilled by Glomar II last August and hailed as the second major oil discovery in Alaska. However, the condition of well casings on this and other wells in which Shell has an interest in Cook Inlet is still to be determined.

...ABOUT THE PROVIDENT FUND

Here are the latest Provident Fund valuations:

Equities Fund: March 5 - \$1.431  
March 20 - \$1.456

Shell Stock Fund: The average cost per share of Shell Stock purchased during February 1964 - \$47.528.

Preliminary reports indicate there was relatively light damage to Shell's marketing facilities in Anchorage.

At Crescent City, California, which was severely hit by a tidal wave following the earthquake, one Shell service station was reported damaged but Shell's terminal and distributor plant there suffered no significant damage.

TWO LOST TIME INJURIES ON SAME DAY...SAFETY SIGN STOPS TURNING

Two lost time injuries occurred in the Refinery Tuesday, March 31, stopping our string of safe workdays at 26. Though painful, fortunately neither injury was considered too severe and both employees are showing continued improvement.

One incident involved an operator who was operating a phenol pump when a pump gasket failed, spraying him on the arms and legs with phenol. Thanks to quick action on his part and the alert assistance of fellow employees, he was able to utilize a safety shower - thus minimizing the burns. It is expected that the employee will be off work from 7-10 days.

The other injury happened when an employee slipped on a wet waxed floor in the Main Office Building. The impact of the fall caused a slight fracture of his upper left arm near the shoulder. He is recuperating at home, and will be off an undetermined length of time.

- - - -

A. G. SMITH TO REPLACE E. W. REILEY (Cont'd.)

During World War II, he saw service in the Pacific Theatre with the U.S. Marine Corps, attaining the rank of Captain.

He joined Shell in January 1946 as a Technologist at the Houston Refinery. Following assignments in several departments at the local Refinery, he was transferred to New York in 1950. In 1952 he went to the Wood River (Illinois) Refinery as Assistant Manager, Catalytic Cracking Department, and in 1958 was promoted to Manager of the Alkylation Department at Wood River. In 1959 he returned to Head Office where in 1961 he was named Manager of the Administrative Services Department - a position he held until his transfer to Houston.

Married to the former Teresa Dowell of Ravenswood, West Virginia, the Reileys have four children - twin sons Timothy and James, 17, daughter Elizabeth, 15, and son Mark, 14.

Smith is a graduate of Stanford University with a degree in Chemical Engineering, class of 1944. From June 1944 to June 1946, he served with the U.S. Navy. Following his release from service he joined Shell at the Wilmington Refinery in the Research Laboratory. In 1951 he was recalled to active military duty in the Korean area. He returned to Wilmington in 1952 and later that same year was named Assistant Manager of the Thermal Cracking Department, and in 1955 he was named Manager of the Effluent Control and Utilities Department. In 1957 he was made Assistant Manager of Wage and Salary, Head Office, and in 1961 moved to his present assignment of Manager of the Administrative Services Department in Head Office Manufacturing.

The Smiths have four children - son Richard, and three daughters, Barbara, Janet, and Christine.

- - - -

**CAFETERIA LUNCH TIMES...PLEASE OBSERVE THEM!**

The Cafeteria makes a request...that employees please observe their designated lunch period time schedule. Too many coming at one time causes the inevitable long wait in line - and no one enjoys that. Here's the schedule again:

11:20 - 11:50 Main Office Bldg.  
 11:30 - 12:00 Research Lab.  
 11:40 - 12:10 Eng. Services, Ind. Eng., all operating depts., Refy. Lab.  
 12:00 - 12:30 Eng. Field, Fire and Safety

C L A S S I F I E D S

FOR SALE: Six choice lots, 100' x 135', located off Pasadena Blvd. in Deer Park. One block from Carpenter Elementary School. Will sell any number of lots to interested parties. Call J. H. Howard, GR-9-2724.

FOR SALE: Beautiful miniature poodle pups; eight weeks old; each parent has five or six champions in background. Price very reasonable....in fact too reasonable. Call Birdie Fogleman, MO-8-7174.

WANT TO BUY: Old 10 h.p. Mercury outboard motor with good lower unit. Call GR-2-8423.

FOR SALE: 1959 Olds Dynamic 88; two-door hardtop; full power; radio, heater. No air conditioning. Excellent condition; good tires and brakes. Clean. Call W. C. Griffin, MO-5-1107. \$950.

FOUND: One pair of sun glasses, found Thursday afternoon in employees east parking lot. Call Editor's office, ext. 540 or drop by room 132, Main Office Building.

## RODS AND REELS FOR SALE:

- Item A: 1 - 5½ ft. Longfellow spun glass rod and No. 1924 direct drive Shakespeare reel with Star Drag. Original Price - \$14.95. Sale Price: \$8.00.
- Item B: 1 - 5 ft. glass rod and No. 1970 President reel by Shakespeare. Original price - \$38.50. Sale Price: \$19.00.
- Item D: 1 - 7 ft. heavy duty Westbend deep sea rod. Original price - \$22.00. Sale Price: \$11.00.
- Item E: 1 - 5½ ft. No. 156 snapper, heavy duty glass rod for deep sea fishing with deep sea Senator Penn reel. Original Price - \$42.00. Sale Price: \$21.00.  
 (Note: Items D and E would be an ideal combination)
- Item F: 1 - 6½ ft. glass spinning rod with Mitchell No. 300 (Garcia product) reel. Original Price - \$42.50. Sale Price: \$21.25.
- Item H: 1 - 6½ ft. glass True Temper, black color, No. 1944 Shakespeare service reel. Original price - \$29.90. Sale Price: \$15.00.

(All items are of fine quality and in good working order) Call MO-5-4507.

- - - -