

SHELLEGRAPH

HOUSTON
REFINERY



"Your Information HOT LINE"

No. 110

TO ALL EMPLOYEES

Thursday, December 10, 1964

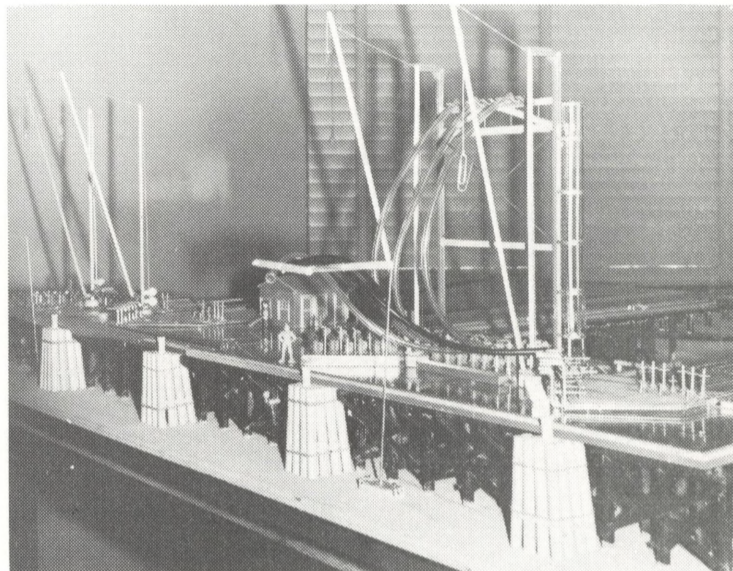


Mr. M. E. Spaght, President of Shell Oil and Mr. D. H. Barran, one of our most recently appointed Managing Directors, visited the Refinery recently. Left to right above are L. T. Wilson, Refinery Manager; D. H. Barran, A. S. Lehmann, Refinery Superintendent; and M. E. Spaght.



Anne Sharpe, daughter of C. F. Sharpe - Zone Foreman - is shown above performing at a recent party of the Houston Shakespeare Society. The party was held to honor the Boar's Head Players.

The players have thus far presented five shows and one television drama. Cast and
(Continued on page 2)



Dock No. 2 now resides in the Industrial Engineers' Office. An actual scale model helps solve dock problems.

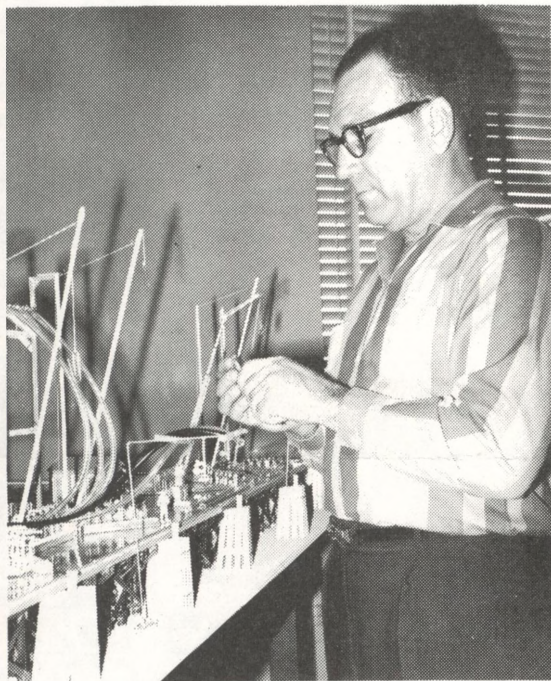
MODEL DOCK BUILT BY INDUSTRIAL ENGINEER

If you have walked by the Industrial Engineering Office lately, you have probably stopped abruptly and taken another look. Once you're sure your eyes aren't playing tricks, you walk in for a better look. There it is - a perfect model of Dock No. 2.

The idea for the model came out of discussions between Industrial Engineering's Fred Macy and John Harkness, Manager Dispatching. They wanted a good way to examine and solve piping problems at the docks - without disturbing any real equipment. A model was the answer.

The challenge of building the model fell to Roy Schroeder. He began by examining the docks and consulting all available prints. Sam Davis, Research Photographer, helped by taking pictures of the docks. Working with materials readily at hand: regular wood dowels for pilings, welding rods for piping, and plexi-glass for decking, he carefully pieced it together. The model is built on a $\frac{1}{2}'' = 1'$ scale and has been "under construction" for three or four months, since it can and does include several alternate layouts on the deck.

(Continued on page 2)



Roy Schroeder is shown putting finishing touches on his creation.

MODEL DOCK BUILT BY INDUSTRIAL ENGINEER (Continued)

The model has already proved its value. Problems such as rearrangement of existing lines, installation of new lines, and simulation of working conditions have been and can be studied in detail. And this is only the beginning. As Schroeder points out, "the model still isn't finished. We will continue to revise and add to it as actual docking facilities, ideas, or demands change from time to time."

- - -

SPECIAL HOLIDAY DINNER IN CAFETERIA

A special Christmas Dinner will be served in the Refinery Cafeteria Thursday, December 17th. Turkey and all the trimmings.

Mrs. Hicks, Cafeteria Manager, also promises an "extra" special holiday treat.

- - -

NEW SHELL STATION OPENS

The new Shell Service Station on Highway 528, between Clear Lake and Seabrook, is now open.

- - -

PERSONNEL CHANGES

<u>Name</u>	<u>Classification</u>	<u>Department</u>	<u>Classification</u>	<u>Department</u>
B. W. Bullock	Laborer	Engr. Field	Gen. Help. #2	Engr. Field
J. Denley	Gen. Help. #2	Engr. Field	Gen. Help. #1	Engr. Field
N. A. Vaughn	Gen. Help. #1	Engr. Field	Rodman #1	Engr. Field
B. Bitner	Pumper/Gauger	Dispatching	Operator #2	Lube "B"
J. Y. Cherry	Operator #2	Distilling	Operator #1	Distilling
J. Carson	Cool. Water Pmpr. #2	Plat. #2	Operator #1	Plat. #2
R. L. Kibby	Operator #2	Cat. Cracking	Operator #2	Lube "A"
G. D. Stepp	Operator #2	Lube "A"	Pipefitter #1	Engr. Field
C. H. Welch	Tester	Refinery Lab.	Special Tester	Refinery Lab.
J. L. Tupa	Operator #2	Utilities	Operator #2	Cat. Cracking
J. H. Littleton	Fireman	Utilities	Loader	Lube "C"

ANNE SHARPE (Continued)

of these productions were honor guests. Miss Anne Sharpe, a folk singer, played her guitar and sang for the guests. Besides Miss Sharpe, other honorees included Miss Vicki Davis, daughter of S. F. Davis, Research Photographer. Miss Davis will be remembered for her performance as Juliet in Channel 13's recent production of Romeo and Juliet.



HELEN WATSON places the first toys in one of the Refinery's barrels under this year's "Toy Time" Program. "Toy Time" barrels are located at all Shell Service Stations in the Pasadena and Deer Park Areas this year. These stations act as collection points for new and good used toys. The toys will be collected by the Pasadena Salvation Army for distribution to needy children. Two barrels have been placed in service at the Refinery. One barrel is located at the Clock Alley at the Main Gate and another at the entrance to the Cafeteria. You can help bring a joyful Christmas to a less-fortunate child by placing a toy in one of these barrels.

- - -