



# SHELLEGRAPH

HOUSTON  
REFINERY



No. 98

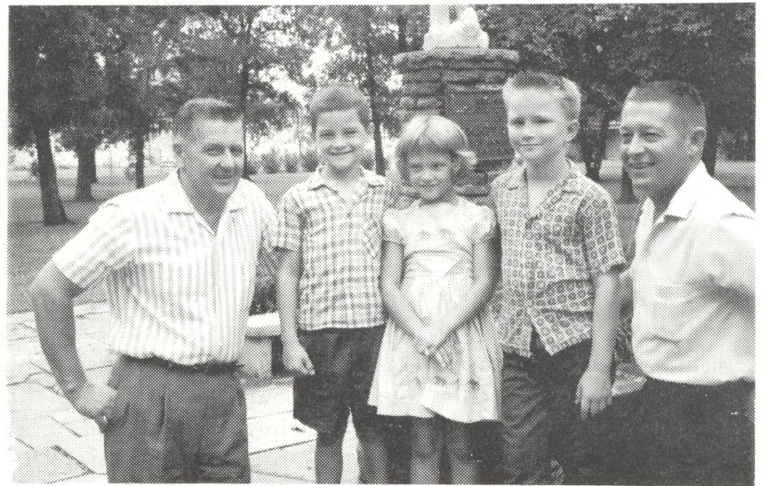
"Your Information HOT LINE"

TO ALL EMPLOYEES

Friday, September 25, 1964



**FOOTBALL HELMETS FOR A GAME?** The game to us may look like eating and swinging, but to the kids shown above, helmets protect them from serious head injuries while they go about their game of living with cerebral palsy.



**SMILES ON FACES** which have known more than their share of tears....shown above are young residents of the DePelchin Faith Home - Donald, 8; Deborah, 7; and Rickey, 9; during a visit by Refinery UF committeemen Pete Garner and Jimmy Lee.

### CREDIT UNION CLOSING NOTICE

The Credit Union will be closed all day Friday, October 9, in order that officers and staff may attend Texas Credit Union League educational sessions in Beaumont.

### REFINERY UNITED FUND KICKOFF MONDAY MORNING - \$25,699 IS OUR GOAL

September 28, 29, and 30 - three days and the 1965 United Fund Drive will be all over for us. But those three days will leave a permanent mark on the lives of thousands of deserving members of our community who are served by the 65 UF Agencies.



On Monday when the Refinery drive begins, the man working on cane chairs at the Lighthouse for the Blind will pledge his customary three days' pay, but he'll hardly give it a thought - it's his idea of a fair share. Think of this man when you are asked to

"Picture Life Through These Eyes" - then give your fair share.

The big kickoff meeting will begin at 7:30 Monday morning in the Central Shops and will feature Mr. John McIntyre, Director of the Star of Hope Mission as guest speaker. He will follow the showing of the UF special film.

Following this meeting the almost 100 solicitors will begin making their rounds - shooting for a goal of almost \$26,000. While their job is not an entirely pleasant one, they stand ready to assist you and answer your questions pertaining to the drive or any of the United Fund Agencies. For special information, however, you are invited to call the Refinery UF Headquarters in the old P & IR building on Ext. 600.

Remember to mail your news media questionnaires in. If for some reason you did not receive one, call Ext. 536.



**SHELL DIESEL** DONATED AS A MOSQUITO FIGHTER...shown aboard a truckload of 11,000 gallons of diesel fuel donated by Shell to communities in the Clear Lake - Bayshore area are L. J. Hallmark, Manager Personnel; Robert C. Chuoke, First Vice President of the Clear Lake Chamber of Commerce and Chairman of the mosquito eradication program; and G. W. Robinson of the Refinery Dispatching Department, and Seabrook City Councilman in charge of the actual fogging operation.

*should be 1100 gallons*

### SHELL ENTERS THE AUTO REPAIR AND SERVICE BUSINESS IN A BIG WAY

After two years of research and planning, Shell has developed a unique concept in the design and operation of a series of automobile diagnostic and service centers throughout the country. P. C. Thomas, Marketing Vice President, formally launched the project today in announcing that a subsidiary corporation, Shell Motorlab, Inc., has been formed to carry on this business.

"The Motorlab is Shell's unique concept of a one-stop bumper-to-bumper service center which will give car owners unequalled convenience and reliability in providing all their motoring needs at a fair price", he said. For the first time motorists will be able to obtain in one place all the major categories of their automotive requirements--gasoline and oil, car washing, tires and accessories, and service and repairs backed by a written guarantee.

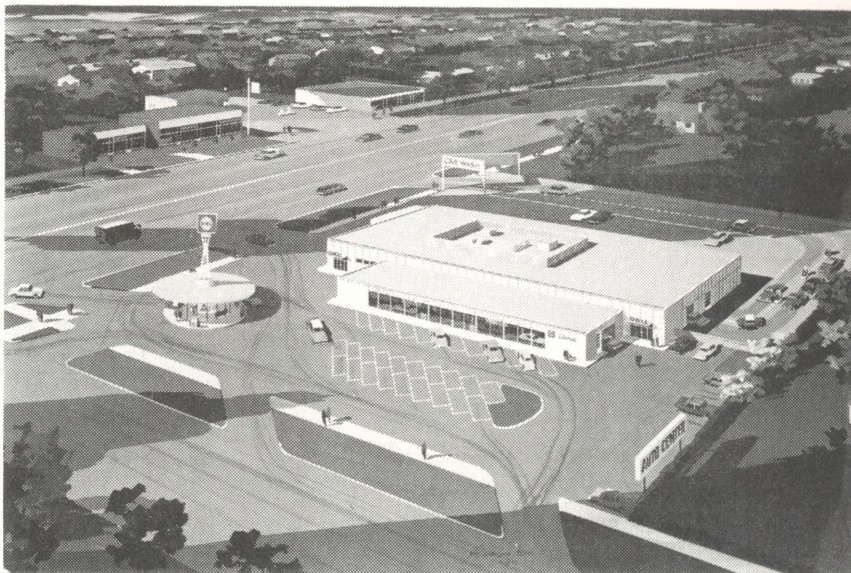
At the heart of Shell's unique automotive service center is a production-line type of diagnostic lane. It will be equipped with the most advanced testing instruments and will use Shell's exclusive series of test procedures, including simulated low-speed and high-speed driving conditions.

Diagnosticians will discuss their findings with the customer in consultation booths. They will explain just what needs to be done to put the car in tip-top shape. The customer may order the work done at the Motorlab or take his car to a service station or garage of his choice.

- - - -



A FISHY STORY CONFIRMED....vacationing George King proudly displays his 152-lb., 9 foot 4-inch Pacific Sailfish hauled in after a 30-minute battle about 20 miles out of Acapulco. Two other big sails and a 70-lb. Hammerhead Shark were also landed by the party which included George's wife and their two children.



THE SHELL MOTORLAB...The architect's drawing of the first Shell Motorlab, which will be built near Detroit, Michigan, shows the diagnostic lane in the front part of the main building, behind which are the lounge, consultation booths and merchandise concourse. The car-wash entrance is near the center of the building. At the rear are the service and repair bays and the quality control bay. The main gasoline sales unit, with its unusual circular structure easily accessible from both streets, stands alone to the left. A second gasoline sales unit is conveniently located along the car-wash entrance lanes.

### ENGINEERING OFFICE MOVES ANNOUNCED

Engineering Office moves have marked the promotion of D. H. Wheeler to Chief Draftsman and the transfer of E. C. Grace to Head Office Engineering as Senior Engineer.

Doug Wheeler was hired as a General Helper in 1945 and, upon receiving his mechanical engineering degree from the University of Houston in 1951, was promoted to Draftsman. Doug was promoted to Engineer in 1957.

Gene Grace, a Mechanical Engineer from Tulane, joined Shell in 1948 as a Design Draftsman. Later that year he was promoted to Engineer and after serving in several Engineering sections was named Senior Engineer in 1954. In January of this year, Gene was promoted to Assistant Manager Engineering Office.



D. H. WHEELER



E. C. GRACE

### C L A S S I F I E D

FOR SALE: 1955 Buick, 2-door hardtop, one owner, low mileage, good condition. Call HU-4-2165 after 5 p.m.

LOST: Gold pin - Jeff Davis School of Nursing. Call Mrs. Leons, Ext. 222.