



Shellegram

Deer Park Manufacturing Complex

Thursday, April 5, 1979

Vol. 44, No. 14

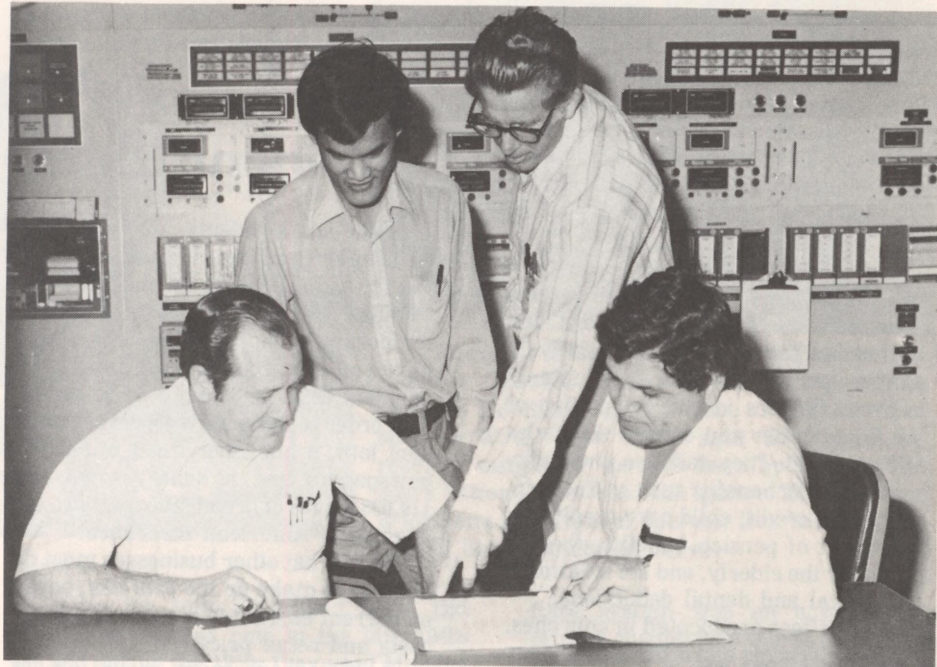
Eponex Enters Marketplace

The marketplace is developing well for Eponex, Shell's newest epoxy resin, whose main point is its weatherability. Shell's Eponex offers all of the advantages of conventional epoxy coatings plus gloss retention and resistance to yellowing and chalking. Eponex resin also has a low viscosity and cures at ambient or low-bake temperatures providing for potential solventless coatings and energy savings.

Eponex resins open a new spectrum of epoxy applications to the chemist. Suggested evaluations for outdoor applications, where conventional type epoxy resins have been essentially excluded, are automobile top coats, swimming pool surfaces, patio and walkway surfaces, and other coating systems where chemical resistance and weatherability are required.

Eponex is being produced in the Specialties Department under the guidance of process manager, Gene Eggers. Linden Wong, engineer, and Bill Ubernosky, operating assistant, work directly with the major contributors to the Eponex manufacture, who are the Specialties Department operators: Roger Luther, Lupe Nunez, Parley Banks, Alex Salinas, Chuck Timm, Bob Patton, Phil Gomez and Curtis Gandy.

Fred Lemley, senior engineer, Process Engineering-Resins, represents



Operating assistant Bill Ubernosky points out an operating trend to senior engineer Fred Lemley (seated, left), while engineer Linden Wong (standing) and operator Lupe Nunez listen.

the DPMC to the Eponex business team and works closely with the Westhollow Research Center in the process and product development of Eponex. Fred feels we've got ourselves a winner with Eponex.

"This isn't the first time Specialties has gotten involved in producing a new product," says Gene. "After all, Specialties is the first step up from the laboratory bench for new product market development manufacture."

It was in Specialties that the first

batch of Eponex was produced some three years ago. Gene thinks of new products as "going through an incubation period" prior to market acceptance. Eponex, however, has now been accepted as a commercial product and is available in truck load quantities.

Yes, it appears that Eponex is a "winner" and the Specialties operating personnel played a big role in its success. Congratulations, Specialties, for a job well done.

Service Anniversaries



25 Years
R. E. Kraus
Utilities North



25 Years
W. H. McBee
G/EC



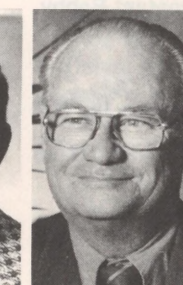
25 Years
W. H. McGuire
Maint. North



25 Years
B. R. Moore
Dispatching



25 Years
H. L. Siemsen
Maint. South



25 Years
R. W. Vanston
Catalytic Cracking



25 Years
H. H. Vaughan
Maint. South

Attention Retirees

Free Tax Assistance

Elderly persons often have special tax problems, but cannot always get tax help because either they cannot afford commercial preparers, or the Internal Revenue Service office is too far away. To remedy this situation, an IRS volunteer program providing free, close-to-home, tax assistance is available to these people.

The IRS Volunteer Income Tax Assistance (VITA) Program trains volunteers to help older persons and low-income taxpayers fill out relatively simple tax forms. VITA volunteers assist taxpayers in the completion of the Form 1040A and certain schedules of Form 1040. They can also give information on tax benefits such as the earned income credit, child care credit, tax treatment of pension benefits, the tax credit for the elderly, and the treatment of medical and dental deductions.

VITA offices are located in churches, libraries, schools and other places near to taxpayers' homes. Because of the convenient locations and hours, many taxpayers find VITA assistance easy to use. Spanish-speaking volunteers are available at some locations.

For the VITA location and times of

Register Carpools

To maintain preferred parking status, carpoolers need to register their carpools by May 1, as their current permits expire on that date.

Registration forms may be picked up at the clock alleys, the main office buildings or the cafeterias.

To be eligible for a preferred parking tag, your carpool must contain two or more persons who ride to and from work on a regular basis. If this applies to you, sign up now for your preferred parking tag.

For more information, contact Bobby Garrett on 6557.

Provident Fund News

The Provident Fund valuation is as follows:

Equities Fund

March 15 - \$2.788

Shell Stock Fund

March 1-15 - \$35.519

assistance most convenient for you, call or write: Austin District Public Affairs Officer, IRS, P.O. Box 250, Austin, Texas 78767 (512) 397-5315.

Accident Costs

On-the-job accidents are costly for the employee in terms of pain and suffering, and expensive for the employer because of medical costs and the temporary loss of a skilled worker. But have you ever considered what a work accident costs in terms of production?

In order to make up a \$500 work accident loss, a publisher must sell 53,767 newspapers and a bakery must sell 119,033 loaves of bread, according to the *Journal of American Insurance*.

Here's what other businesses must do in order to make up the \$500 loss, based on current estimates of manufacturing costs and retail prices:

- A restaurant must serve 3,788 lunches.
- A department store must sell 16,130 pairs of boys' socks.
- A garment manufacturer must sell 901 men's shirts.
- A telephone company must handle 23,575 local payphone calls.
- A toolmaker must manufacture 962 hammers.



APRIL 1979 UP COMING EVENTS

- * SQUARE DANCING EACH TUES.
- * BOWLING EACH THURS.
- * EASTER EGG HUNT 4/7
- * MEN'S SOFTBALL STARTS 4/9, THEN EVERY MON. & WED.
- * HOLIDAY 4/13
- * FUN NITE 4/18



MARCH EVENTS

DELTA DOWNS WAS A BIG SUCCESS

JOIN SCORA AND JOIN THE FUN

WATCH BULLETIN BOARDS FOR OTHER SPECIAL EVENTS ALSO FOR TIMES, DATES, ETC.

FOR INFORMATION ON PUBLICATION OF SCORA EVENTS CONTACT

BOB JOHANSEN - 6433

Welcome To The DPMO



Fred Brooks
Sr. Financial Acct.
Product Accounting



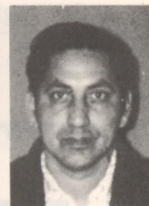
Bill Coit
Engr. - Engrg
Plant Engrg.



Miles Davis
Staff Physician
Medical



Brad Eaton
Financial Acct.
Product Accounting



Ed LaVois
Electrician No. 1
Maintenance North



Tanna Malveaux
Clerk
Services-Mail



Mike Monroe
Instrument Man No. 1
Maintenance South



Knox Montgomery
Chemist
Lab/Analytical



Debbie Oravetz
Clerk
Services-Mail



Elizabeth Patrick
Nurse
Medical

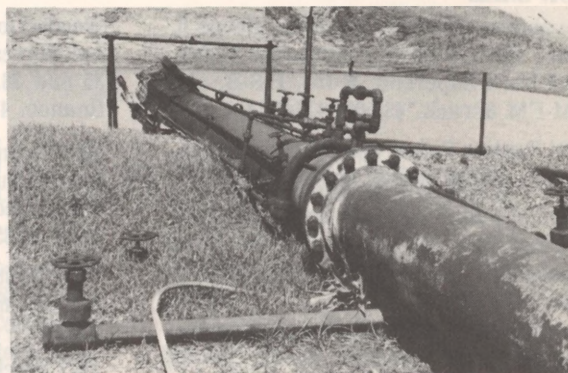


David Sciortino
Analyst
Distribution



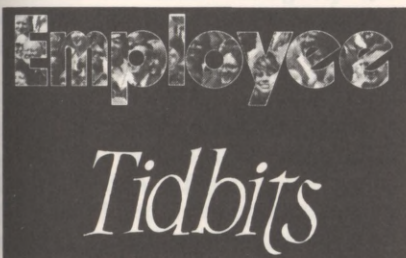
Debbie Weber
Sr. Acctg. Assistant
General Accounting

Vertical Flare Replaces Ground Flare



On March 21 at 12:45 p.m., Process Engineering engineer Chauvel Rojas and Lube C operations foreman Ed Burr watched Lube C shift breaker operator W. H. "Tex" Ritter light the pilots of the recently completed vertical flare by pushing the spark button of the John Zink ignitor. The new flare is located to the right of operator Tex Ritter, while the old flare is pictured above.

On March 21 operators put away the Roman candles used in recent years to



Distribution shift foreman Nelson Tippit struggles with disintegrating cup of contact. Environmental Conservation office secretary Betty Chambers obtains microwave approval. Maintenance North electrician Wentford Morrow likes working in cafeteria. Refinery Laboratory special tester Allen Savage and Arkansas dance partner reveal hog slopping experience. Distribution operator Frank Kresta admits to being a gun freak. Project Engineering engineers Jerry Leach, Cal Hansen, Bob Myers and Myrle Bryant demonstrate their service station style, while office assistant Jeanne Conway and typist Barbara Porter roar with laughter.

Since joining a carpool, Herschel Thomas, senior draftsman, Engineering Support, no longer walks to and from the parking lot. Chemical Plant superintendent Hank Bettencourt departs Acapulco after second earthquake hits.

ignite the Lube C ground flare. Old timers recalled how in the late 1940s and during the 1950s they used Molotov cocktails to throw at the ground flare's tip to ignite its pilot. The Molotov cocktails gave way to Roman candles and now the operators will be using the latest technology - the John Zink flame front generator - to ignite the new, smokeless vertical flare. Although not nearly as exciting as tossing a Molotov cocktail or using a Roman candle, the flame front generator is much safer.

The modernization of the Lube Plant

flare system was an environmental project costing \$600,000. It included the installation of the vertical smokeless flare, the John Zink flame front generator, a liquid knock-out vessel, a radiation detector and the repair and overhaul of the ground flare for use during maintenance on the vertical flare.

The new flare will handle 200 pounds per hour of hydrocarbon vapors and eliminate the excessive smoking that occurred periodically in the past with the ground one.

Employee, Retirees Die

Maintenance South pipefitter Bruce L. Hamm, 25, died March 25.

At the time of his death, Bruce had 1½ years of service.

Funeral services were held at the University Church of Christ in San Marcos with interment at San Marcos City Cemetery.

He is survived by his wife, Sally, who resides at 2001 Victoria Court in League City.



Hamm



Adams

Fay Hilliard, 69, died March 27.

At the time of his retirement in June 1960, Fay was a personnel representative in Personnel and Industrial Relations with 27 years of company service.

Funeral services were held at Our Lady of Guadalupe Catholic Church in Eldorado with burial in Forest Park Lawndale.

He is survived by his wife, Winnie Helen, who resides in Eldorado, Arkansas.

The Shellegram regrets that no picture was available.

Edward Adams, 64, died March 29.

At the time of his retirement in April 1975, Eddie was a wax helper in Lube Oils with 30 years of service.

He is survived by his wife, Mattie Lee, who resides at 5523 Sweet Bay in Houston.

Classifieds

FOR SALE

8' cabover camper, like new, sleeps 6, oven, stove, icebox, porta-potty. \$1,000. 1975 Ford Supercab, F-150, P-S-B, air, AM-FM 8-track. \$3,000. 472-7114

1974 Pontiac Safari 9-passenger wagon, loaded, 55,000 miles. \$1,795. 479-0188

Royal Doulton Argenta china, 12 place settings plus serving pieces. 36 stems Fostoria Fascination crystal. Never used. 479-8339

21" Lawnboy self-propelled lawnmower. \$110. 471-5365

1973 Impala stationwagon, all power, air, radio, nearly new tires. 334-2009 after 5 p.m.

1977 LTD Ford, 2 door, Landau roof, P-S-B, air, AM-FM radio, 24,000 miles. \$4,200. 488-8972 after 5 p.m.

1975 Chevy Silverado pickup, loaded. \$2,850. 455-7865

1975 Bultaco 360MX motorcycle, long travel shocks, extra cylinder, special tools. \$895. 772-3561 after 5 p.m.

Custom made drapes, double window floor length, celery antique satin, sheers and rod. \$85. Wall plus window lavender antique satin and rods. \$45. White patio door drape and one-way rod. \$15. Rod for double window. \$10. Will trade for lawn furniture. 479-1181

Foos ball table. \$150. 477-1948

Acre in San Jacinto County between Conroe and Cleveland, backs National Forest, high ground, lots of trees. \$2,495. 471-7098

AKC male beagle. 337-2086 after 6 p.m.

Faberware open hearth electric broiler with rotisserie and forked spatula, new condition. \$45. 471-5365

1974 Honda CL360. \$250. 424-2049 after 6 Wooded lots on high slope in Lake Conroe Forrest, Natches Street No. 33, 34, 35 and 36. Small down payment; will finance. 477-5093

1973 Grand Prix, 46,500 miles, original owner, auto, P-S-B, air, radio, bucket seats, electric windows, tilt steering, no rust. \$2,350. 481-6773

Vita-Master bicycle exerciser with electric motor, used 1 week. \$75. 946-5382

1977 Buick Regal, P-S-B-W, PDL, PTR, air, cruise, tilt wheel, cassette tape. 734-0338

1972 Chevy Impala, air, P-S-B, 41,000 miles, excellent condition. \$1,500. 446-9211

Double bed frame and headboard. \$40. Dresser and mirror. \$45. Small stove. \$35. Broiler. \$25. Twin mattress and box springs. \$75. Sofa and chair. \$85. Coffee table and 2 endtables. \$40. Lamp. \$10. Painting. \$20. Air conditioner and heat pump. \$400. 926-5489 or 339-1903

2 new N50-15 Formula Super Stock tires. \$100. 1968 Dodge 383cid engine with matching automatic transmission. \$125. 481-8900

26" Magnovox color TV, lovely cabinet and picture. \$225. 644-0133

FOR RENT

3-1-1 house in Pasadena on Doris Street, fenced, dishwasher, gas range, carpeted bedrooms. \$335 per month. 473-1137 or 479-0146 after 6 p.m.

WANT TO BUY

Exercycle in good condition. 471-0868

Chest of drawers for nursery. 479-6401

26" woman's or man's bicycle in good condition. 472-8410

1971 Fiat 850 for parts or doors and hood, reasonably priced. 446-9211

FREE

Large breed male Schnauzer, gentle, ca. 8 months old. 472-1967

PERSONAL

To all our friends at Shell, Virginia and I express our deep appreciation for the retirement parties and the gift of money for the purchase of a Roto-Tiller. I have already put it to good use in breaking up a garden. We are now living at Ivanhoe Estates, 8 miles south of Woodville on Highway 69. You are all welcome to stop by anytime. The dogwoods are really beautiful.

- Bill and Virginia Wechtenhiser

Sincere thanks to all of my friends at Shell for the kindness shown me upon my retirement. The tools will come in handy to keep me busy. Will need some help to keep up with the work orders.

- C. B. Connolly

It is with sincerest thanks and appreciation that I will enjoy my fishing equipment and gifts. Although I will miss many familiar faces, I shall enjoy many pleasures of retirement. The get togethers were fun and I have many pleasant memories of my 31 years with co-workers at Shell. If in the future you find the time, drop in on us. Thanks again.

- Fred Holleman



Shellegram

Deer Park Manufacturing Complex

Published weekly by Shell's Deer Park Manufacturing Complex for its employees and pensioners. All inquiries should be addressed to **Shellegram**, Shell Oil Company, P. O. 100, Deer Park, Texas 77536.

Dotti West - Editor