

CHAO CHUN

(Translation from the characters in the upper right-hand corner of the calendar)

Chao Chun, one of the four most famous beautiful women of China, was born at the close of the Sung Dynasty (from 960 A. D. through the twelfth century). Her father held an official position in a small town. She could make fancy embroideries and write beautiful poems when 16 years of age. She was an only daughter and as well loved by her parents as "The Pearl in the Hand."

The emperor lying on his ivory couch had a dream. In this dream he met a beautiful girl named Chao Chun. Her marvelous complexion won his love and he inquired her name and address and the profession of her father. He had intentions of marrying her. When he arose in the morning the emperor called his officers, told his dream, and asked their advice. They advised him to send forth men to find whether there was any such girl living.

The officers traveling from morning to night, over mountains and through valleys, one day found Chao Chun. They declared the imperial edict to her and brought her to the emperor's palace.

As the legend goes, a person desiring an audience of his imperial majesty had to submit a picture of himself or herself for the emperor's perusal. Owing to an insufficient bribe offered to the officers, a black spot was placed on her picture below her cheek. Then they asked the imperial fortune-teller to inform the emperor that he would come to misfortune should he marry this girl. Chao Chun was immediately sent to the "Lun Kong" (a prison in the palace) without a word to the emperor or even a glance at his solemn face.

One bright moony evening, the emperor, while taking a walk in his garden, heard plaintive music. "Who is it playing?" he asked of his followers. "Chao Chun with her guitar," they replied. He approached the Lun Kong, and there met the beautiful girl. "How do you happen to be here?" asked the emperor. Chao Chun knelt before him and told the truth. The next day the ill-doers were punished and Chao Chun was married to the emperor.

Years afterwards the Northerners attacked the kingdom. The emperor's military resources were weak and he was defeated. A decision was made that the emperor should pay a large quantity of gold and silver and other precious things every year to the king of the Northerners as tribute. But after a time the king heard of the fame and beauty of Chao Chun, and, no longer satisfied with the treasures alone, requested that she be sent to him also.

The emperor, to preserve his kingdom, had to comply with the request, and he sent forth Chao Chun.

The painting portrays Chao Chun's departure.

The TEXACO STAR

PRINTED MONTHLY FOR DISTRIBUTION
TO EMPLOYEES OF THE TEXAS COMPANY

Vol. XIII

June 1926

No. 6

"All for Each—Each for All"

Address: The Texaco Star, The Texas Company,
Houston, Texas

Copyright, 1926, by The Texas Company

While the contents of this journal are copyrighted other publications are welcome to reprint any article or illustration provided due credit is given to The Texas Company.

The Front Cover

The Texas Company's Chinese Calendar for 1926 did not reach the *Star* until near the middle of April, after the cover for the May issue had been prepared, and it is therefore shown later in the year than usual.

The name and date of the artist who made the original painting (some famous one, it is safe to say) was not given. That information will be added later. We wrote to Shanghai for it, but three months must elapse before we could receive answer by return mail.

The splendid lithographing of past years has been maintained. This year, however, the calendars were made in Osaka, Japan, by a firm of Japanese lithographers at a very low price. The size of the calendar is 14 x 30 inches. About a quarter of a million of them were printed for distribution in China and Korea, and in the Philippine Islands, Java, Mauritius, South Africa, Jamaica, and Cuba, where Chinese merchants are important resellers of Texaco kerosene.

Some have always wondered why The Texas Company issues these splendid Chinese calendars. The cost of such magnificent lithographing in this country would be prohibitive, but even at the low prices of the Orient it is considerable. The explanation was given emphatically at last year's meeting of the Asso-

ciated Advertising Clubs of the World, when various authoritative speakers, in discussing trade possibilities in China, emphasized the importance of choosing artistic subjects and the best craftsmanship in printing. It was declared: "If you can make your advertisement attractive enough to them, and approach them in the right manner, you will be surprised with the result of your effort. The advertisement will be highly appreciated and will not be thrown into the waste basket as is sometimes the case in other countries. . . . The Chinese are especially fond of calendars and value them highly. . . . The Chinese are ready to concede ten feet if one foot is conceded to them. Anybody who knows the Chinese characteristics knows what this means. If you do them a favor, they will never feel easy until they can have a chance to return it."

Evidently our Shanghai Office understands what it is doing.

Aside from business aspects, the classic paintings which have been reproduced in our Chinese calendars called forth expressions of the highest appreciation from collectors in this and other countries. The ancient painting shown last year, representing a symposium of seven celebrated scholars of the Chin Dynasty (A. D. 265), painted by Tang Ying, one of the most famous artists of the Sung Dynasty (A. D. 960), was especially admired. One collector (a well known captain of industry) wrote to The Texas Company:

"Your agent in this city showed me the other day a copy of the issue of the Texaco Star for May 1925. I was much interested in the publication and particularly in the reproduction of an exceptional Chinese painting on the cover.

"As I am much interested in Chinese painting, I am writing to ask whether it would be

The TEXACO STAR

possible for me to secure a copy of the calendar, for which I will gladly pay, or if you do not have it in the form of the calendar, a copy of the cover reproduction.

"It is a particularly interesting example of a Sung painting and I would very much like to add it to my personal collection.

"Incidentally I wish to congratulate the member of your staff who has the taste and, I may say, the courage to reproduce this picture in the Star."

A New Texaco Journal

The *Star* welcomes the first issue—Vol. I, No. 1, June 1926—of a yet unnamed monthly journal conducted jointly by the Producing Department of The Texas Company, The Texas Pipe Line Company, and The Texas Pipe Line Company of Oklahoma.

The work and the interests of the three organizations concerned in this hopeful enterprise are so closely involved and the necessity of instant and continual coöperation is so urgent that it is evidently expedient for them to take a united stand in this new organ for stimulating the pull-together spirit.

There has been no waste or duplication of function by *The Texaco Star*, which is the general Company journal, and *The Look Box*, which has for over seven years served the particular interests of our great Refining Department. In like manner, this new journal covering the special interests of those engaged in the vastly important producing and pipe line transportation branches of the business has its proper and fruitful field of usefulness open before it.

The 'elder brother' sees no occasion for exhortation or advice, but it may not be amiss to quote the first editorial in the *Star*, Vol. I, No. 1, November 1913:

"The *Texaco Star* is founded in the hope that it may become a medium of useful service to The Texas Company and to the legions of individuals who are loyally working in its complex organization. The scope of this monthly house journal, or company bulletin, will be as wide as the varied interests of the Company. The affairs of The Texas Company extend over the face of the earth and comprise many inter-related departments, each dependent upon all and all upon each for efficiency. Probably men working in one department do not adequately comprehend and sympathize

with the work and aims of other departments. Perhaps some do not thoroughly understand the various activities of their own department. Information about the work and functions of the constituent parts of the organization must tend to infuse an intelligent interest, and consequent aspirations and hopes for advancement as a reward of meritorious diligence. In short, the psychological effect should be an enlivened *esprit de corps*. A desire to coöperate, to 'play the game,' makes very strongly for the satisfaction and happiness and prosperity of the individual, and increases the efficiency of all coöperative action."

The editor of the new journal for the special interests of producing and pipe line activities makes an auspicious addition in his statement of his purposes, which this editor had in mind but did not express. I therefore note, with congratulations to my colleague, that among the defined aims of the new publication is included the purpose, "to train employes in care and caution in thinking safely, as well as acting safely." All power to him!

R. Ogarrio

On December 1, 1925, Mr. Ogarrio assumed his new duties as Assistant to Vice President D. J. Moran, Manager of the Producing Department.

Mr. Ogarrio entered the service of The Texas Company of Mexico, S. A. as Assistant Engineer at Tampico, Mexico, on October 10, 1916. In December of that year he was transferred to Houston, and during the next several months was engaged in the preparation of plans

for Tampico Works, Agua Dulce Works, and the Tepetate-Agua Dulce pipe line with field gathering facilities. On March 1, 1917, he returned to Tampico as construction engineer,



R. Ogarrio

The TEXACO STAR

and served in that capacity until the facilities mentioned were completed and put in operation.

In June 1918 Mr. Ogarrio was appointed Assistant General Manager of the Refining and Pipe Line Departments of The Texas Company of Mexico, and was promoted to General Manager in January 1920. In July 1922 he assumed the additional duties of General Manager of the Producing Department. The following year he was assigned to the supervision of exploration work in Panama and South American countries, and in January 1925 was appointed Manager of the Texas Petroleum Company, organized to operate in those countries.

Mr. Ogarrio was born in the State of Chihuahua, Mexico, and received elementary and high school training at Saint Louis College, San Antonio, Texas. He then entered Massachusetts Institute of Technology at Boston, Massachusetts, where he received three years' instruction in civil engineering, after which he entered Sheffield Scientific School, Yale University, from which he was graduated in 1909 as a civil engineer.

From that time until he became associated with The Texas Company of Mexico he was engaged on various engineering works in the Republic of Mexico, serving for several years as engineer for the Department of Public Works.

Mr. Ogarrio is a young man of proved ability and with a delightful personality which has won for him the admiration of many friends in The Texas Company organization who predict a continuance of his successful career.

James H. Hall

James H. Hall was born in Missouri and received his elementary and high school education in that State. In 1904 he moved to Mexico with his parents, but later returned to the United States and completed his education in the University of Oklahoma. In 1912 he entered the oil industry as a leaseholder in the Tampico district for the Cowdray interests, and in that capacity he became familiar with the geology of the Mexican oil producing region. In 1914 he was sent to Cuba for the purpose of acquiring prospective acreage in that country.

When the United States became a participant in the World War, Mr. Hall en-

listed and received commissions as First Lieutenant U. S. Infantry before his regiment was sent over-seas, and remained in the U. S. Army service until several months after the armistice was declared.



James H. Hall

In 1919 he entered service of The Texas

Company of Mexico, S. A., and was assigned to the New York office as executive assistant on supervision of Mexican operations. On March 20, 1926, Mr. Hall was appointed Manager of The Texas Company of Mexico with headquarters in Tampico.

In his capacity as Manager, Mr. Hall is well qualified by a thorough and intimate knowledge of the many major problems of the oil industry in Mexico, which are becoming increasingly difficult. He has always disposed of the tasks assigned him in an energetic and resourceful manner, and The Texas Company of Mexico is to be congratulated on a new Manager so well qualified.

Veterans of World War

July 2, 1926, is the final date for reinstating your Government life insurance and taking out a new policy.

These policies are exactly the same as those sold for much more by the best insurance companies, because the Government offers them at less than cost as a reward for military service.

If you miss this last opportunity, you may regret it the rest of your life and your dependents will regret it longer than that.

If you want to know what your rights are, fill out as below and mail to Insurance Division, U. S. Veterans Bureau, Washington, D. C.:

Please send information on policy checked below:
Ordinary Life () 20-Year Endowment ()
20-Pay Life () 30-Pay Life ()
30-Year Endowment () Endowment at Age 65 ()
Name _____ Age _____
Address _____ (Street and No., or Rural Route)
_____ (Town and State)

The TEXACO STAR

DiETING

Various special forms of diet are advocated by cults and diet quacks. In some cases the regulation of the diet may be a complex matter, but for the ordinary individual some very simple precautions will hold him safe.

Probably the greatest risk that people run is some specific diet deficiency such as lack of vitamins or minerals. In other cases the diet is badly adapted to the type, the heavyweight being fond of starchy, sugary, and fatty foods and disinclined to eat the bulkier foods in the vegetable and fruit class. On the other hand, the undernourished, anemic lightweight, may have no taste for green vegetables or fruits and may be attracted by a meat and potato diet.

The fundamental principles of a healthful dietary are simple and, making due allowance for type, easily applied. Anyone who includes a fair amount of milk, green vegetables, whole cereals, and fruit in his dietary every day or every other day is on the safe side. No specific dietary deficiency can occur under such conditions.

Barring some particular form of disease where a very narrow and carefully studied diet is required, it is simply necessary to watch the scales and note whether the weight is at a favorable figure. If the weight is too low, then an increase in the consumption of bread and butter or cereals and cream is desirable, but the green vegetables and fruits should be included as they improve the assimilative powers. If the weight is creeping up there should be caution in the use of the very foods named as important for the lightweight. Both the lightweight and the heavyweight, however, need green vegetables, fruit, and some milk in the diet.—*How to Live.*

Death Certificates

Some day we shall tell the truth in the death certificates, and the reports will be made out like this:

- "Died after thirty years of over-eating."
- "Smothered himself to death; worked and slept in unventilated rooms."
- "Burned out; slept only six hours a night."
- "Poisoned by his wife, who used wrong cooking methods."—*London Life Magazine.*

What the future has in store for you depends largely on what you place in store for the future.

A Forgotten Anniversary

When he reached home on the evening of May 20 he found the children dressed up, the dinner table spread for two guests, and was greeted by the couple of intimate friends whom his wife had invited to dinner. Still it did not occur to him that the day was the anniversary of his wedding day.

Without delay they were seated at the table, and he was proceeding to discharge the hospitable duties of the head of the table when the lady guest arose and addressed to the fast rising blushes on his face the following:

Eleven Years Ago

Eleven years ago today!

What did you promise, what did you say?
Is the voice of the parson with you still,
When you eagerly answered, I will, I will?

How can a fellow forget so soon
The wonderful days of his honeymoon,
When his blushing bride walked by his side?
My, but his bosom swelled with pride!

Eleven years! how could you forget?
'Twas a thrilling time for you, I'll bet;
But—men are so busy, at least, so they say.
What's an anniversary to them?—Just merely a day!

So take my advice, when the twelfth year's in sight,
Send roses or candy; now say, am I right?
Yes, women are silly, not brainy like men,—
Do I hear now your promise, Oh! never again?

—K. A. Lubbock.

May 20, 1926, Houston, Texas.

A kiss made it all right at the opposite end of the table, and a merry meal was enjoyed.

Sentiment is the flower of the human mind, but sentimentality is its traducer.

—W. Lee Lewis.

Nae man can be happy without a friend, nor sure of him till he's unhappy.

—*Scotch Proverb.*

CRUDE OIL PRICES AT WELL

May 31, 1926

Penna. Bradford	\$3.65	Eldorado	\$2.00 to 2.30
Other Penna.	3.55	Smackover	1.10 to 1.50
Indiana	2.25	Haynesville	2.00 to 2.10
Canada	2.88	Homer	1.85 to 2.20
Ragland, Ky.	1.25	Caddo	1.85 to 2.45
California85 to 2.74	DeSoto	2.00 to 2.30
Okl. & Kas.	1.65 to 3.57	Bull Bayou	1.95 to 2.25
N., N.C. Tex.	1.65 to 3.57	Crichton	2.00 to 2.10
Luling	1.30	Wyoming	1.35 to 2.40
Gulf Coast	1.35 to 2.05	Colorado	1.50 to 1.85

The TEXACO STAR



Ready to start for repair job on Tel. & Tel. pole line

“Do You Know?”

L. J. LARUE, Assistant Superintendent, Telegraph and Telephone Department,
The Texas Pipe Line Company

The Telegraph and Telephone Department is the pulse of any corporation. Outside of our department very few realize what it consists of, or the importance of the telegraph and telephone system.

We have 9841½ miles of wire and 1229½ miles of our own poles, which cover a territory of Oklahoma, Texas, Louisiana, and Arkansas. Our main lines are from Tulsa to Dallas, Dallas to Houston, Houston to Beaumont and Port Arthur; from Houston to West Columbia and Boling field; west from Dallas to Ranger, Cisco, and western points; from Dallas to Fort Worth, Wichita Falls, and Olney; from Houston east to Shreveport, Louisiana, and through to El Dorado and Louann, Arkansas.

We also have a net work of field lines to the different wells and field pump stations, such as, at Humble, Wichita Falls, Olney, and all the other points where we are operating in any field.

We have, also, a leased wire from the Western Union from our New York office through

Chicago and Lockport connecting to our own circuit at Tulsa and thence to Houston, which puts us in direct communication with those points, time being saved and errors eliminated by direct communication.

Part of our wires are on foreign poles, which is known as leased contacts, part of them on our own poles, as above stated.

In Texas, Louisiana, and Arkansas, we have practically eliminated the telegraph at pump stations by using telephones. This has been very successful and convenient, as any fireman or engineer or any employe can handle the business over the 'phone, which eliminates an experienced telegraph operator at these points. In Oklahoma we use telegraph at a majority of the pump stations, mostly on account of not having copper circuits to all of our pump stations in that state. All message business from the fields and pump stations is 'phoned into the terminal office, such as, Wichita Falls, Shreveport, Tulsa, Dallas, Houston, and then transmitted by telegraph to destination.

The TEXACO STAR

Our circuits are composed of straight telegraph Morse circuits, metallic telephone circuits, simplex circuits, and composite circuits. A telegraph circuit is one single wire. A telephone circuit is two wires commonly called metallic, as we use very few grounded telephone lines at present—in fact they are practically eliminated. A simplex circuit is two wires, or metallic circuit, using both telegraph and telephone at the same time without interference from either. A composite circuit is two wires, or metallic circuit, which gives us one telephone circuit and two telegraph circuits out of the two wires at the same time without interference from either, this being taken care of by the equipment in the terminal offices.

We have linemen, known as troublemen, who maintain the circuits, and when the wires go in trouble—grounded, crossed, or broken down—these troublemen go out, regardless of the weather, and repair them or put the circuits to working. Trouble usually comes in during the worst weather, in fact most wire troubles are caused by bad weather of some description. When a circuit is reported in trouble, the Wire Chief in the terminal office in the district where trouble is reported tests for a location and notifies the troubleman where it is likely



Sleet storm wreck in West Texas

to be found. In most cases the trouble is located by measuring to it with an instrument known as a galvanometer.

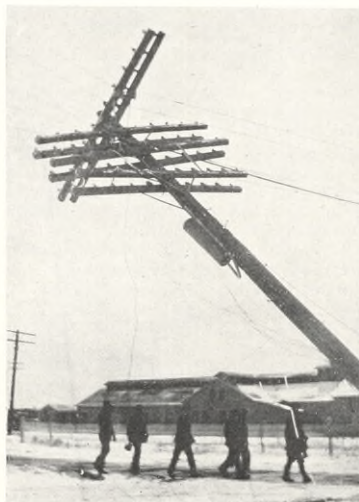
People do not miss the service of the telegraph or telephone until the communication fails. A few moments of waiting on the telephone, or an hour or so delay in exchange of telegrams, seems an eternity when the circuits are down, especially in the case of a total wreck like the sleet storm of December 1924, when wires were hopelessly down for a few days with poles broken and the wires broken between poles for miles.

We have a small construction gang with a standard make of truck that rebuild the old lines and construct the new. They travel from one part of the system to the other in this truck wherever and whenever they are needed.

Think It Over

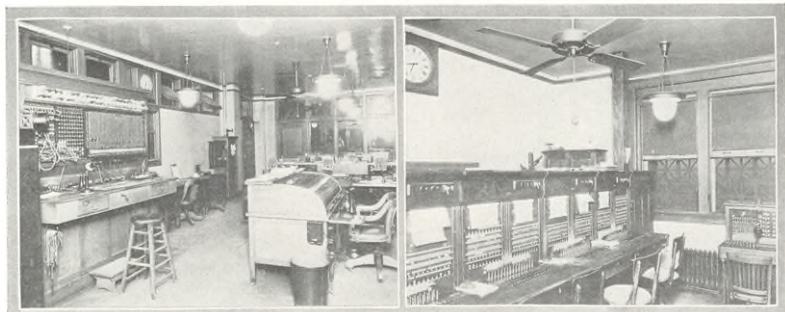
The telegraph and telephone privileges are more abused than any other service in any corporation, as it is very easy to write out a telegram when a letter could serve the purpose, or careful wording of the telegram would at least eliminate superfluous words.

We often lose our patience in trying to secure a number, especially through a P. B. X. (Private Branch Exchange), without considering what the little lady at the local exchange board is doing to complete the call. In an exchange as large as the one in the Houston building, with between 800 and 900 employees, the telephone operators must practically memorize every employee's name, location, and exchange number in the building. On in-coming calls the girl sometimes rings the wrong party



Sleet storm wreck in North Texas

The TEXACO STAR



Houston Telegraph Office and Private Branch Telephone Exchange

who may be a well known man in the building; we suppose a great many wonder how this occurs, but they never fail to resent it at the time in their own mind. For instance, if there are several men with the same name in different departments, the party calling not knowing their initials or the exact department where they are located, the girl endeavors to find out what subject or business the calling party wishes to talk about, and in this way in most cases she is able to give the caller the proper party; sometimes, however, they get the wrong ones.

We often wonder if the users of the telegraph and telephone facilities have ever noticed or wondered how their telegrams and telephone conversations are kept secret, as very important matters are handled over the circuits without any information leaking out. It may be a big oil deal, or the death of some prominent party, or a tip on the market; but the information is never exposed until the proper party feels disposed to make it known. This is on account of an honor code among telegraph and telephone operators under which they do not divulge the substance of any telephone conversation or telegram.

This year we will more than likely have the automatic or machine switching telephone system installed throughout the Houston building. At the present time we have provided room for the automatic equipment to be installed, as the Southwestern Bell Telephone Company expects to have all automatic in the city of Houston by 1928, or within two years. Our exchange will be one of the first to be equipped with this new service.

With the installation of the automatic or machine switching, the party calling an outgoing call or inter-communicating call, that is, calling a party in the building or outside the building, will get their own numbers by dialing from the 'phone themselves, as every 'phone will be equipped with a dial on the base. When they dial or call their number their call will go through our P. A. X. (Private Automatic Exchange), through the Southwestern Bell Telephone Company's exchange, and through to 'phone they are calling. On incoming calls, that is, any one calling a party in The Texas Company Building, they will dial The Texas Company number, and the girl then answers and rings the party wanted in the building, as the public would not be able to tell the station numbers of the different employees. The building will be equipped with two telephone directories for each telephone in use, one of these will be for the city, the other for the building numbers or stations.

We reprint here a short article, which was published in *The Texaco Star* some years ago, showing the right and wrong way to use a telephone, as a good many times the instrument is blamed when it is the fault of one or the other parties through not speaking distinctly into the transmitter, or talking too loud, or being too far away from the mouth-piece.

The Tel. & Tel. Division offers this practical advice:

If we could only impress thoroughly upon the minds of all who use the telephone the importance of speaking distinctly into the transmitter, or mouth piece, and of getting

The TEXACO STAR



Views in Dallas Telegraph Office

close to the mouth piece when talking, we would improve the service of the telephone fifty per cent.

Often someone complains that his receiver is out of order—because he could not hear so-and-so, when in fact the person referred to uses the phone in the manner marked *Wrong* in the accompanying pictures. When a complaint is made to this effect, all that is necessary is to go to that office and watch them use the phone.

In holding a business conversation personally, we do not believe you would turn your head from the person addressed, or put your hand over your mouth to muffle your words: *Yet this same habit is practiced on the telephone day after day.*



Wrong



Right

English Prof.—Correct this sentence: "Before any damage could be done, the fire was put out by the volunteer fire department."

Frosh.—"The fire was put out before any damage could be done by the volunteer fire department."—*Doings in General.*

Page eight

What We Say and How We Say It Over the Phone

Do you once stop to think when you answer your phone, That the party who's calling may not be alone? What you say, how you say it, is seed that's sown there, And for good or for evil the fruit it will bear.

Have you jerked the receiver near loose from the phone, Saying, "This Mr. Smart," in a gruff and harsh tone? Though the person who's calling may not take offense, Yet the nine out of ten have all thought you lacked sense.

Let us now take for instance an every day deal, Where the caller's a stranger, his way he must feel, As he wishes to buy a large bill of good lumber, So he turns to the book to find some dealer's number.

The directory gives him a Lumber Saw Mill, If they have what he wants he will buy a big bill; It was Smart Brothers' mill and located near town, He gives Central a ring, the receiver takes down.

Then the answer came rough with a jerk and a flaunt, Saying "Mr. Smart speaking, what is it you want?" "To inquire about lumber," said stranger to him, "You have got the wrong party,"—hangs up with loud vim.

All surprised was the stranger at this kind of talk, To himself then he says, "At your lumber I'll balk;" So he scans the directory again for a mill, And finds one doing business named Climbing Up Hill.

He calls *them*, and they answer in calm and kind way, And then, "What can we do for you? Lumber you say? To be sure we have lumber, please give me your name, A. Spotcash, a new customer, Hotel DeSame."

"All right, Mr. Spotcash, and we thank you so much, With some one of our salesmen I'll soon get in touch, We will send a car for you, not cost you a cent, We can show you our lumber in any event."

And the consequence was, that the Climbing Up Hill Sold this Mr. Spotcash, with ten cars in the bill, While Smart Brothers' salesmen looked on with a groan—

They had lost by the way they had answered the phone.

—H. C. Beard,
Sour Lake, Texas.

The TEXACO STAR



Wallace, Idaho, in the heart of The Coeur d'Alene

Forty Years of Coeur d'Alene Mining

ALFRED J. DUNN, Editor of the "Wallace Miner," in "Mining Truth"

The photographs through the courtesy of Mining Truth, Spokane Chamber of Commerce, and Northwest Mining Investment Company

Forty years is a long time, whether applied to the life of a man or a mine. Yet there are many men still with us who were in the Coeur d'Alene district when the Bunker Hill and Sullivan mine was discovered, the 40th anniversary of which was celebrated only a few weeks ago.

Prior to the Bunker Hill and Sullivan discovery "Coeur d'Alene District" referred to the gold belt in what is now known as the North Side. It was gold that placed the Coeur d'Alene district on the map, but it was the discovery of the great lead-silver vein that extended its bounds and marked the beginning of mineral production which has added almost a billion dollars to the wealth of the world.

The Bunker Hill and Sullivan long ago earned the distinction of being the greatest lead-silver mine in the world; and, more remarkable, after 40 years of continuous production it is still in position to retain this rank

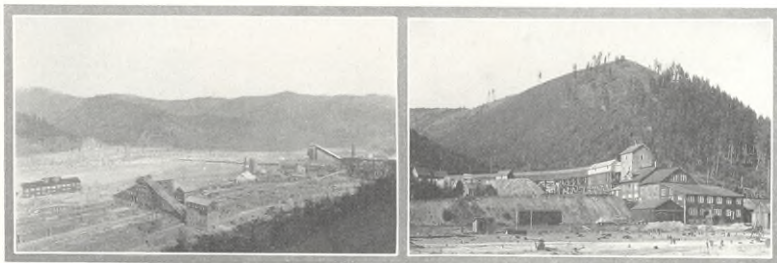
for many years. This is not an idle assertion, but based on the statement of the manager in a recent report to the directors. Referring to ore reserves and production possibilities, he said the condition was better than at any time in the history of the mine.

The Morning mine is another that seems to defy time and the insatiable demand for metal. Discovered only a few months after the Bunker Hill, it soon entered upon a career of production covering almost 40 years. Profits this year are greater than for any other in its history.

The Gold Hunter mine, discovered almost coincidentally with the Morning, although its productive record has at times been interrupted, is still active and the outlook is brighter than ever before.

The Hecla has been paying dividends regularly for a quarter of a century and all conditions indicate that another quarter century will still find her going strong.

The TEXACO STAR



1. The famous Bunker Hill Mine and Smelter, Kellogg, Idaho, 76 miles from Spokane. The largest silver and lead mine and smelter in the world. Here are found Texaco lubricants.
2. Hunter Mill in the Coeur d'Alene Mining District near Spokane—Texaco lubricated.

These four of the more prominent producing mines are mentioned to illustrate the long life of mines in the Coeur d'Alenes, and as evidence of what may be expected of other mines. Possibly some one may take exception to this, and point to the Tiger-Poorman, Gem, Frisco, Last Chance, Standard-Mammoth, Hercules, and other mines that fell short of this long productive life. But this would not affect the broad proposition. The ore-bodies of every worked-out mine in the Coeur d'Alene district proved to be large and deep-seated and yielded enormous profits, and some of them would not have been abandoned if the milling methods that prevail today had been known then.

Not only is every mine in the district crowding production to the limit to meet the demand for lead and zinc, but abandoned workings are being invaded by leasers and old waste dumps are yielding a profit through high metal prices. While producers, big and little, are sending out every available ton of ore, development work is proceeding with equal energy in the quest for new mines. Many of these enterprises involve large expenditures and are in the hands of financially strong organizations.

In recent years four new mines have been added to the producers: the Sunshine on Big Creek, the Constitution and Highland-Surprise on Pine Creek, and the Ambergris at Burke.

Star mine, owned by the Bunker Hill and Hecla, has been shipping ore removed in the course of development and is rapidly approaching conditions for large production. Other mines shipping irregularly, which have every evidence of becoming permanent producers, are the Hypotheek near Kingston, Nabob and Douglas on Pine Creek, Lincoln near Osburn, and Stratton near Wallace.

Another mine that will probably soon become productive presents a striking illustration of the benefit derived from development of the flotation process for the separation and recovery of lead and zinc. In 1910 the Federal Mining and Smelting Company made a large expenditure in the development of the Corrigan, now called the Page mine, near Kellogg, only to find that the extensive ore shoot contained such a high percentage of zinc that it could not be profitably mined for the lead. The zinc was not only worthless at that time, but methods of concentration made no satisfactory separation of the two minerals, with the result that the smelting penalty against the zinc more than offset the profit on the lead. The mine was therefore abandoned.

Now after 15 years the Federal has reopened the Page and will probably build a mill which, through the magic of flotation, will separate and recover both the lead and zinc, while the demand for metal assures a handsome profit on both.

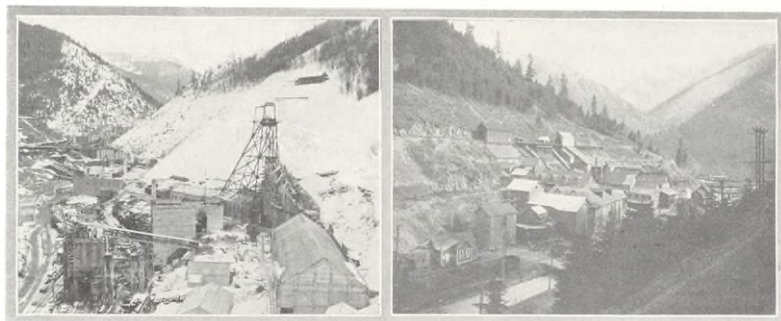
Pioneer Camps of The Coeur d'Alenes

From "The Detonator," Oakland, California

It would take a psycho-analyst to account for the extraordinary incident leading up to one of the discoveries that precipitated the great rush to the Coeur d'Alene country in 1884. While it is generally conceded that most prospectors after precious metals are dreamers, it is not often that one specific vision can be held responsible for such an exodus as resulted from the one in question.

As the story goes, a man named Davis, living in the Palouse country, dreamed one night that he was traveling up a heavily tim-

The TEXACO STAR



1. Hecla Mining Company, Burke, Idaho,—practically 100% Texaco.
2. Federal Mining and Smelting Company, Wallace, Idaho.—Texaco lubricated.

bered gulch in search of gold. He was following a stream as his only guide, and coming to a fork he paused and chipped from a ledge a nugget of pure gold. Continuing his visionary investigations, he was rewarded with more gold in such quantity that he loaded four mules with the metal and departed on his way rejoicing. Curiously enough, the dream was repeated the next night.

This was too much for Davis, and he decided to go in search of his gulch, first persuading two guileless souls to accompany him. There had been rumors of finds in the Coeur d'Alene district, so thither the three trusting men journeyed, and after prospecting a short while Davis found the place pictured in his dream; every detail was familiar. There was the fork in the stream and there the ledge. Feverishly the three men started to work. The first pan of dirt showed color; the second yielded about three dollars; and after digging a while in the hillside a small nugget was uncovered, worth close to one hundred dollars. In less than three months, when the water gave out, it being now July, Davis and his companions had taken out, not four mule loads, but forty-two thousand dollars worth of gold. Dream Gulch, as it was then named, proved that Mr. Davis was some dreamer.

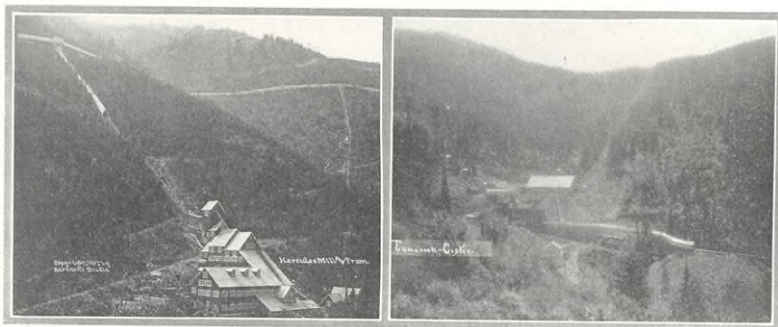
Gold had been reported in the country as far back as 1867, when a man named Wilson, with a party of prospectors, announced a small find. But the country was so remote and inaccessible that small importance was attached to the news, and it had almost been forgotten when, in the fall of 1882, John Pritchard made

his way from the old Jesuit Mission, following the Coeur d'Alene River to its headwaters, and returned asserting that it was his belief that gold in paying quantities existed in the mountains. This led to the formation of the Bozeman stampede, but, owing to the enormous quantities of snow, at places over twelve feet in depth, the party returned disgusted. Pritchard, however, persevered, and in 1883 discovered what is known as The Widow's Claim, so named from the fact that a friendly widow had grub-staked him on this particular journey. The news of this find was probably the inspiration for Davis's dream, as he acknowledged afterwards that he had been thinking considerably about the district.

These two discoveries were sufficient to start what is known as the great rush, which occurred in 1884, and it is stated that in no other gold field were such tremendous obstacles placed by nature in the path of the adventurous men, with the possible exception of the Klondike. Indeed, Eugene V. Smalley, writing in the *Century Magazine* of October 1884, said: "Of all the stampedes in old or recent times the great Coeur d'Alene stampede of the winter and spring of this year was probably the most remarkable." Not only were there no roads, there was not even a trail, the entire region being covered with pine, cedar, and fir trees so dense as to make it in places absolutely impenetrable.

In the mountain passes, at the time the rush began, the snow was twelve to fourteen feet deep, and even on the flat it lay waist deep throughout the entire region. Overcoming all

The TEXACO STAR



1. Hercules Mill and Tram, near Wallace, Idaho. Here the Red Star and Green T can be seen.
2. Tamarack-Custer Mill and Mine, near Wallace. Texaco lubricants here too.

these obstacles, over 5,000 men fought their way into the heart of the mountains during the months of January, February, and March. Practically all the men in the first few months carried provisions, tools, clothing, *etc.* on rough and in many cases hastily improvised sleds and toboggans, frequently drawing after them loads of from 200 to 250 pounds. The going was dangerous and difficult, but an average daily trip was around twenty miles.

The first of the permanent camps was located at the junction of Eagle and Pritchard creeks, and here was formed one of the wildest settlements in the history of American mining. Gamblers flocked in from Leadville, dozens of song and dance halls sprang up overnight, whiskey was rushed in from every available source, and there was no scarcity of women to throng the dance halls. The camp was swelled by an influx of adventurers who had followed the construction camps of the Northern Pacific Railway and were left stranded when it was completed. The majority of the places were canvas with roughest wood bases.

The success of the Dream Gulch district gradually drew away from the population of Eagle City, as the first camp was known, and a new settlement named Murray sprang up, some five or six miles higher up the creek. This place was described by a writer of the period as an attempt to build a town in the heart of a forest. Trees were partly cleared away here and there, but the stumps and half charred logs were allowed to remain, and in some cases furnished seats for the people who put up their tents around them. One account states that the writer's introduction

into Murray was the encountering of the funeral procession of a printer who had been shot by an editor; but it was decided that the editor was needed in the place, and he was left unmolested until the district court next met. There is no record of his having been finally dealt with, from which it would appear that Murray was an unhealthy spot for printers but a haven for editors.

It did not take long to convince the majority of the adventurers that there were only poor pickings for them. Although gold was found in paying quantities, it was difficult of access; and, as one man stated, it took at least a thousand dollars worth of labor to get down to pay dirt. Gradually the poorer class deserted the camps.

The transition of The Coeur d'Alenes from a gold camp to the greatest lead-producing district in the country was presaged by a discovery of galena late in 1884 at Canyon Creek, a tributary of the Coeur d'Alene River. On this spot the Tiger and Poorman mines were located, forming the nucleus of the town of Burke. By this time the rush was over, and the mining of gold was only spasmodic. The discovery on Mill Gulch of the now famous Bunker Hill and Sullivan mines followed in short order, and the extraordinary richness of these deposits drew the needed capital into the district. A narrow-gauge railway was constructed from Lake Coeur d'Alene to the mines, and this development was one of the prime causes in the tremendous growth of the mines, which in three short years from the first discovery of galena became the greatest lead-producing region in the world.

The TEXACO STAR

Making the Most of Fresh Fruits and Berries

KATHERINE FERGUSON CHALKLEY, State College, Pennsylvania

(Copyright 1926)

Now is the time when all good housewives are gleefully planning delicious dishes that can be made out of stored sunshine—the fresh fruits and berries of the summer months. Tempting cherries, round luscious peaches, royal blue plums, juicy pears, raspberries, huckleberries, blueberries appear in abundance in the fruit stalls, or in the orchards and berry patches of those most fortunate mortals who “raise their own.”

Fruits and berries, as we know, have their seasons, and the seasons of these delectables are short indeed. We have to make the most of each fleeting meal-time, if we're going to get the greatest pleasure and benefit out of these foods.

And we should make the most of them.

Fresh fruits and berries and vegetables are Nature's own tonics. Use them freely. Practically live on them during the few short weeks that they are plentiful. They will build up vitality. They will give back in overflowing measure the “pep” that summer's torrid heat is sapping from you. They will help to build up reserves of energy for the winter ahead.

Make the most of summer's fruits and berries!

Shortcakes have always been a favorite American dessert. Strawberry shortcakes are looked forward to with keen eagerness. But peaches, raspberries, cherries, apricots, pineapples, in fact any fresh fruit or berry can be concocted into shortcakes that will make the family sit up and take notice.

Here is a recipe for the “cake” part.

The recipes will serve four persons.

The abbreviations are: C.—cup; tsp.—teaspoon; tbs.—tablespoon.

Shortcake

2 C. flour	$\frac{3}{4}$ C. butter or other shortening
4 tsp. baking powder	
$\frac{1}{2}$ tsp. salt	$\frac{3}{4}$ C. milk

Mix and sift dry ingredients two or three times. Work in shortening with the finger tips and add milk gradually. Divide into two equal parts. Shape into two well buttered pie tins and bake in a hot oven for fifteen minutes. Spread on cake with butter and cover with sweetened slightly crushed fruit or berries, and put other cake on top. Cover this with fruit or berries, sprinkle lightly with powdered sugar, and top with whipped cream. Individual cakes may be made by shaping the dough into biscuits and proceeding as above.

Did you ever try berry muffins? Most folks, of course, are partial to blueberry muffins, but other berries are as good. If you've never tasted berry muffins, you have a pleasant surprise in store when you serve this recipe hot from the oven.

Berry Muffins

$\frac{1}{3}$ C. sugar	4 tsp. baking powder
$\frac{1}{4}$ C. shortening	$\frac{1}{2}$ tsp. salt
1 egg	$\frac{2}{3}$ C. milk
2 C. flour	$\frac{3}{4}$ C. berries

Cream shortening, add sugar gradually and then the well-beaten egg. Mix thoroughly. Sift all but one-fourth cup of flour with baking powder and salt and add alternately with milk. Sprinkle berries with the reserved flour and fold into batter. Bake in well greased muffin tins in a hot oven from twenty to twenty-five minutes.

Of course, one can't neglect the pies that can be made only in the fruitful—and berriful—weeks. I know a family of boys who insist on having blackberry pie every day while there are blackberries on the market. Here is the recipe.

Blackberry Pie

2 C. blackberries	2 tbs. lemon juice
$\frac{2}{3}$ C. sugar	1 tbs. sugar
3 tbs. flour	1 tbs. flour

Wash the berries. Mix with sugar, salt, flour, and lemon juice. Let these stand while you line a deep pie plate with plain pastry. Sprinkle the bottom crust with one tablespoon of sugar and flour mixed together. Add berry mixture. Put strips of pastry across the top and bake for forty minutes in a moderate oven.

When our husbands were little boys they were given, as a very special treat, gooseberry tarts. Give your little boys and their father a surprise by serving these:

Gooseberry Tarts

4 C. gooseberries	$\frac{3}{4}$ C. water
$1\frac{1}{2}$ C. sugar	1 tbs. lemon juice

Wash and drain berries. Add sugar and water and cook slowly until berries are tender, stirring constantly. Take from stove and add lemon juice. Cool. Pour into tart shells or spread on tart wafers. Top with meringue or whipped cream, sweetened and flavored.

The tart shells are made by shaping pastry over inverted muffin pans, pricking bottoms and sides all over with fork, and baking fifteen minutes in a hot oven. The tart wafers are made by rolling the pastry about one-fourth inch thick and cutting into circles with a cookie cutter. Cut a hole in the center of half the circles. Bake ten to twelve minutes in a hot oven. Spread the gooseberry mixture on to the whole wafer and place the wafer with the hole on top.

Red raspberry whip is as good to eat as it is simple to prepare.

The TEXACO STAR

Red Raspberry Whip

1½ C. red raspberries 1 egg white
1 C. powdered sugar cream or custard

Whip the egg white until stiff, then whip in powdered sugar. Add the berries that have been carefully washed and drained. Whip until very stiff. Pile on serving dish and put in refrigerator to chill. Serve with cream, whipped or plain, or a simple custard sauce.

Many persons feel that pears are only good when eaten raw. Whether you agree, or not, stuffed pear salad has a flavor unexcelled.

Stuffed Pear Salad

2 pears ¼ tsp. salt
3 tbs. cream cheese ¼ tsp. paprika
½ tbs. chopped peppers Lettuce
Nut meats 4 tbs. dressing

Arrange the pear halves on lettuce leaves. Work the peppers, salt, and paprika into the cheese and make into four balls which should be placed in the center of the pear halves. Put a tablespoon of salad dressing over each serving and garnish with nut meats.

Browned fresh pears with chocolate sauce make a hearty supper or luncheon dish.

Browned Fresh Pears

4 pears 2 tbs. butter

Cut the pared pears in fourths, lengthwise, and brown in hot butter. Arrange in baking dish and cover with chocolate sauce.

Chocolate Sauce

2 squares chocolate 2 tbs. butter
4 tbs. granulated sugar ¼ C. powdered sugar
1½ C. milk 1 tsp. vanilla

Put sugar and milk into double boiler and add melted chocolate. Let cook for five or ten minutes. Stir occasionally. In the meantime melt the butter and add powdered sugar. Cook until well caramelized, stirring constantly. Add to the milk. Bring to a boil. Flavor with vanilla. Pour over pears and chill.

There's no need to speak of cherry pie. That's as much of an American institution as strawberry shortcake. But what about fresh cherry cobbler served with thick yellow cream, whipped or plain? Yum, yum, it's good!

Cherry Cobbler

2 C. cherries, pitted 2 tsp. baking powder
2/3 C. sugar ½ tsp. salt
1 tbs. flour 1 tbs. sugar
1 tbs. water 2 tbs. butter
1 C. flour ¼ C. milk

Mix the cherries with two-thirds cup sugar, tablespoon flour and water. Pour into well-buttered baking dish. Mix and sift flour, baking powder, sugar, and salt. Work in butter. Add the milk gradually. Shape over the cherries. Prick dough with fork or make little slits so that the steam may escape. Bake forty minutes in a moderate oven. Serve from baking dish.

At last we come to the peaches, perhaps the most luscious and versatile of all summer's fruits. Of course, you make peach shortcakes. Here is a variation that every member of the family will ask for again and again and that makes a splendid "company" dessert.

Peach-Sponge a la Mode

8 thin slices dry sponge cake ¼ C. sugar
½ pt. vanilla ice cream ¼ C. cream, whipped, or
6 peaches ½ pt. vanilla ice cream

Pare peaches, slice, and cover with sugar. Before serving, mash slightly. Put thin slices of cake on plates, spread with ice cream, cover with peaches, put on another slice of cake, cover with peaches, and top with a spoonful of whipped cream, sweetened and flavored, or a spoonful of ice cream.

Some folks like baked peaches, prepared by peeling four peaches, cutting them in halves, and removing stones. Place in a deep pie plate. Fill the cavities with a teaspoon of sugar, a dot of butter, a few drops of lemon juice, and the merest sprinkle of cinnamon. Bake 15 to 20 minutes in a moderate oven.

But for me, the peach dessert of peach desserts is:

Frozen Peach Pudding

4 peaches ½ pt. heavy cream
½ C. granulated sugar ¼ C. powdered sugar
½ C. water ¼ C. dried macaroons
2 tbs. lemon juice ¼ C. pecan meats
 1 tsp. vanilla

Pare peaches, sprinkle with granulated sugar, cover and let stand at least one hour. Mash very fine, or squeeze through cheesecloth. Add water and lemon juice. Turn into mold. Whip cream, add powdered sugar, macaroons, very finely chopped pecan meats, and vanilla. Pour over fruit mixture. Cover with buttered paper, buttered side up, cover and pack mold in equal parts of salt and ice. Let stand three or four hours or longer.

There are dozens of other ways of serving peaches, as well as the other fruits of the season. These suggestions must of necessity be meagre. But use them. Make them your own by changing them to suit your tastes.

Use the fruits and berries of summer. Make the most of this stored sunshine—Nature's tonic.

Tomatoes

There was a time, not so far distant, when canned tomatoes were described by dietetic experts as merely colored water having no food value. It is true that tomatoes have almost no fuel value, but they are valuable sources of vitamins even when canned. Specialists in children's diseases differ as to the advisability of giving canned tomato juice to very young infants, although experiments have shown that it can take the place of orange juice. Orange juice is probably better for the very young infant, but older children can take canned tomatoes without any risk of stomach disturbance.—*How to Live.*

The TEXACO STAR

LAW CURRENT

Rob't A. John

FORFEITURE OF MINERAL LEASE.—All tenants in common must join in an action declaring an oil lease forfeited before the Court is authorized to so declare. *Union Gas & Oil Co. v. Gillem*, 279 S. W. (Ky.), 626.

CASINGHEAD GAS.—Casinghead gas is a constituent of crude oil, and where the lease provides only for a royalty of $\frac{1}{8}$ on all oil produced, this will include a $\frac{1}{8}$ royalty on such casinghead gas as may be recovered. *Connelllee v. Magnolia Petroleum Co.*, 279 S. W. (Tex.), 597.

OWNERSHIP IN WILD GAME AND FISH.—In some jurisdictions oil is likened unto wild game and fish, title being in the public until the hunter or fisherman reduces the same to possession. This doctrine is carried in North Carolina to the extent of holding that title to fish and wild game is in the public and that no one may possess himself of the same without permission from the public authorities. *Moore v. Bell*, 131 S. E. (N. C.), 724.

MUNICIPAL ORDINANCES.—An ordinance prohibiting the erection of a garage in a certain zone of a city is held to be unreasonable where such business better serves the public, declaring a garage to be a public necessity and not necessarily a nuisance. *Bloom v. Ventnor City*, 132 Atlantic (N. J.), 243.

MINERAL LEASE—PRESENT TITLE TO OIL.—A mineral lease, where the granting clause uses the phrase "granted, demised, leased and let" all the oil and gas lying under a certain

tract of land, conveyed a present title to the oil and gas so located, it being a grant of an estate in realty. *Nicholson Corporation v. Ferguson*, 243 Pacific (Okla.), 195.

UNIVERSITY LAND.—Under the constitution of the State of Texas, it has been held that oil produced on lands owned by the University of Texas is a part of the permanent endowment and can not be used for the purpose of building additions, or for any other purpose; that the same must be invested and that only the interest is available for buildings and operating expenses of the State University. *State ex rel. Attorney General v. Hatcher, State Treasurer*, 281 S. W. (Texas), 192.

WORKMAN'S COMPENSATION—RESENTING AN INSULT BY FELLOW SERVANT.—Where the two servants were engaged in the performance of their duties under their contracts of employment, and one insulted another, who resented the same, resulting in personal injury, it was held by the Court of Civil Appeals at Waco that such injury was not inflicted within the scope of said employment and that the injured party was not entitled to compensation insurance. *Indemnity Insurance Co. v. Scott*, 278 S. W., (Texas), 347.

MINES AND MINERALS—CONSIDERATION.—Where, in addition to a cash consideration, lessee agreed to pay an additional consideration of \$3,000 out of oil produced and saved from the premises, the lease contract containing no unconditional obligation to drill, does not imply such an obligation, and lessor cannot recover the additional consideration where the option to drill or not to drill is with the lessee. *Owens v. O'Donohoe*, 280 S. W. (Texas), 842.



Blackbeard's Point, on Hampton Roads, about fifteen miles from Norfolk, Virginia.

This photograph was kindly sent by Mr. R. F. Nelson, of the Virginia State Chamber of Commerce, who writes: "When at Hampton, Virginia, the other day I was taken to Blackbeard's point, where many years ago Blackbeard the Pirate was beheaded and his head hung up on the point as a warning to sailors against piracy. I was struck by the fact, when I visited the place, that The Texas Company had a station on the point occupying it in its entirety."

The TEXACO STAR

DEPARTMENTAL NEWS

The managers of the respective Departments have assigned to the persons whose names are here given the duty of sending to *The Texaco Star*, so as to be received by it before the 25th day of each month, departmental news, photographs, and other items of general interest. Material for this purpose should be sent to *them* before the 20th of the month. All are invited to cooperate.

Refining Dept.
Natural Gas Dept.

Ry. Traffic & Sales Dept.
Marine Dept.

Legal Dept.
Treasury Dept.

Comptroller's Dept.

Insurance Dept.
Governmental Reports
Sales Dept. S. Territory
Sales Dept. N. Territory
Asphalt Sales Dept.
Export Dept.
Purchasing Dept.

Producing Dept.
Pipe Lines
T. T. Co. of Mexico S. A.

C. K. Longaker, Houston
W. H. McMorries, Jr.,
Fort Worth

J. A. Brownell, New York
H. Hassell, Port Arthur
H. Norris, New York
H. Tomfohrde, Houston
H. G. Symms, Houston
R. Fisher, New York

B. E. Emerson, Houston
P. A. Masterson, New York
C. M. Hayward, New York
L. C. Oakley, New York
D. L. Lindsay, Houston
Geo. W. Vos, New York

J. J. Smith, New York
J. B. Nielsen, New York
J. A. Wall, New York
J. E. McHale, Houston
J. T. Rankin, Denver
Otto Hartung, Houston
Fred Carroll, Houston
E. D. Hopkins, Tampico

REFINING DEPT.

Last month Mr. D. L. Lindsay in his article reporting his visit to Port Arthur and Port Neches gave some account of our Safety Week in April. We show here photographs illustrating several features of the work, which covered the three plants in Jefferson County.

The 'drive' was started off Monday evening with a safety rally at the Case and Package plant at which the supervisory forces of the three plants were present, about 500 being in attendance. Of the delightful dinner served under the direction of Superintendent Drake, Employment Supervisor Nicholson says: "It is my opinion that at this dinner there was demonstrated more real industrial good fellowship than at any previous gathering of like nature at which I have been present, and the splendid reaction on the part of our foremen following this dinner leads me to believe that we could not have developed a more profitable program than the one which was carried out."

We are justified in expecting that a great



The Spring Safety Drive at plants of The Texas Company in Jefferson County, Texas.

1. A typical Gang Meeting at Port Arthur Works. 2. An address at Port Neches Works by Superintendent D. M. Phillips of Riverside Fullers Earth Plant. 3. The Texaco Orchestra which furnished music for the gang meetings at the various plants. 4. Some of the 1200 children who enjoyed the Saturday matinee at the Elks Theater in Port Arthur.

The TEXACO STAR

deal of good will result from the efforts put forth during our Spring Safety Week, and it is the unanimous opinion of the General Plant Safety Committee that safety drives should be conducted at least twice a year.

WATER SHIPMENTS BY THE TEXAS COMPANY FROM PORT ARTHUR, TEXAS, MONTH OF MAY 1926

Refined—Coastwise.....	1,230,884 bbls.
Refined—Foreign.....	441,938 bbls.
	<u>1,671,922 bbls.</u>
Crude—Coastwise.....	128,545 bbls.
Crude—Foreign.....	37,860 bbls.
	<u>166,414 bbls.</u>
Total.....	1,838,336 bbls.

COMPTROLLER'S DEPT.

With sorrow we report the death on May 5 of Mrs. Lyndon A. Smith, wife of Traveling Auditor Smith. Mr. Smith's many friends throughout the Company extend their heartfelt sympathy to the bereaved family.

SALES DEPT. S. TERRITORY

Houston District.—

Initiative is what we like to see in our field forces and our Acting Agent T. W. Murray at Austin, Texas, not content with the broadside of Texaco advertising which heralded the arrival of the New and Better Gasoline in this District on May 7, gathered around him kindred spirits in Austin, consisting of our good customers the Lone Oak Filling Station, Cunningham Tire Company, and the University Service Company, and with their equipment and passenger



Announcing the New and Better Gasoline in Austin Congress Avenue between Sixth and Seventh Streets

cars staged a parade with our banners and other advertising matter well in evidence on the cars and trucks. Mr. Murray reports that their little "circus" caused a deal of favorable comment and was a "knockout."

Right now Houston is getting her share of Conventions and such gatherings and with all these out of town visitors it is gratifying to hear from various sources commendatory remarks on the appearance of our service stations and our dealers' service stations. We were in town the other night and found a crowd at the display windows of our Building discussing the displays, the lighting arrangement, and the mechanical novelties exhibiting Texaco Motor Oils, and we were gratified to hear murmurs from the crowd of Conventioneers that Texaco was "It."

Dallas District.—We very much appreciated the visits of Messrs. F. T. Manley, P. C. Scullin, L. R. Holmes, and W. H. Noble, and look forward with pleasure to visits from other officials to inspect our new D. O. quarters. The improvements and addition to our building are about finished and it is worth a trip to Dallas to see.

New Orleans District.—Stations making 95% or better in collections for April were: Union, Booneville, Corinth, Columbus, Maben, and Boyle, Miss., all of which attained 100%; Ruleville, Anguilla, Magee, and Philadelphia, Miss.; Ruston and DeRidder, La.

Assistant Agent H. A. Fitzpatrick, Shreveport, La. Station, and Miss Elgie Segrest were married on April 25 in Lake Charles, La. We all wish this couple the best happiness.

Agent J. S. Harris, Ruston, La. Station, and Mrs. Harris are the happy and proud parents of a splendid baby boy, Jack Arnold Harris, who arrived on this mundane sphere May 14.



Cunningham Tire Company, Austin, Texas

Equipment all dressed up for the parade. They are putting over the New and Better Texaco Gasoline in good style along with the rest of our dealers. Such cooperation and enthusiasm on the part of our dealers certainly helps business along all round.

The TEXACO STAR

Atlanta District.—District Manager Jones, in company with Assistant District Manager Woodward and Superintendents Robertson and Wood, recently returned from a two weeks tour of the District, holding meetings of the Representatives, Agents, and Salesmen of each Zone. These meetings were very beneficial and much enjoyed.

Our Spartanburg, S. C. Agent reports that on the morning of April 20 Tank Truck Motorman J. P. Hardy failed to report at the usual hour, but later in the day he came in and passed around the cigars, announcing the arrival of a baby girl at his home, christened Mary Alice.



S. S. "Overbrook"

Recently purchased by M. & J. Tracey Company, New York, from the U. S. Shipping Board.

We have a lubricating oil contract with M. & J. Tracey Company, and after the system of the vessel was thoroughly flushed and changed it was filled with Texaco Marine Turbine Oil H. The products supplied by us to this vessel are named in Marine Salesman Thos. J. Young's letter, from which we quote:

This vessel is owned by M. & J. Tracey Co., 1 Broadway, New York City, having recently been purchased

from the U. S. S. B. Laid Up Fleet, and was repaired and overhauled at the Alabama Dry Dock & Shipbuilding Co., this city (Mobile, Ala.), under the supervision of Mr. W. P. Brown. The vessel is a tanker, and was built at Chester Shipbuilding Co., Chester, Pa., and is turbine driven.

We furnished the following oils here:

1650 gals. Marine Turbine Oil Heavy.

110 gals. Marine Engine Oil.

55 gals. Marine Cylinder Oil.

55 gals. Marine Refrigerating Oil A.

100 lbs. Cup Grease 3.

440 gals. Corvus Oil for slushing out tanks.

1500 bbls. Fuel Oil C.

The steamer will be under command of Captain W. A. Hudgins, with Chief Engineer Chas. A. Palmer.

Florida District.—Jacksonville employes enjoyed a straw ride to Jacksonville Beach on May 13. The ride was fine and the surf better, but the climax was reached when the "eats" were spread. Those dancing had an added pleasure. All feel indebted to Agent McNeil, promoter of this joyous evening, and to wives and "sweeties" for the "eats."

Daytona Beach employes echo: If a good time, with a better "Day After," is desired, trump in on one of their many picnics to the Ponce De Leon Springs, the legendary Fountain of Youth.

Employes at Pensacola Station acknowledge receipt of the following:

*Mr. and Mrs. Cade E. Shackelford
request the honor of your
presence at the wedding
of their daughter
Dessie Naomi*

*to
Mr. Jackson Salvant Ritchie
on Monday evening, May 17, 1926,
at 7:15 o'clock, First Baptist Church,
Tallahassee, Florida*

Mr. Ritchie is Assistant Agent at Pensacola



1. First drive-in filling station in Ocala, Florida, eight years old and going strong.
2. New service station of The Texas Company at Ocala, Florida, operated by Meadows Brothers, typical of Texaco representation in that vicinity.

April 1926 compared with April 1923 shows a gallonage increase of 140% at Ocala Station, which reflects the fine work done by Commission Agent C. C. Fraser.

The TEXACO STAR



Tomato field and lettuce growing near Ocala, Marion County, Florida

Station. Salesman W. A. Mix will be Best Man. Leave it to these Texaco boys to put it over in grand style.

Mr. and Mrs. J. L. Koontz announce the arrival of Miss Marguerite Koontz, May 3, 1926. Mr. Koontz is Secretary to District Manager Dodge.

Ocala claims to be the center of the Kingdom of the Sun, and its blessings of rich soil and sunlight make an unequalled agricultural region. Phosphate, rock, and lime mining, and veneering plants lead the line of industry, lending a substantial air.

Kingdom Of The Sun.—Worshippers of Florida's health giving sunshine are traced to their

center among the Timuquanan Indians, who worshipped the sun with marked regularity. Every February they selected the skin of the largest stag they could find and stuffed it with the choicest and sweetest roots, and upon its antlers and neck hung long garlands of the finest fruits. At dawn a procession of shadowy figures, moving through the forest chanting with weird music, carried the stag to an open space and placed it high upon the tallest tree, with its head and breast toward the rising Sun. The Chief, with his Shaman standing near, and with his people at a short distance making responses, prayed to the Sun and besought him to cause their lands to grow such



Silver Spring near Ocala, Florida

Up from subterranean depths gushes this wonderful spring six miles east of Ocala, reached over a fine new road. The flow of this mighty spring is over 22,000,000 gallons per hour. The water is cool and as clear as crystal. Boats with glass bottoms afford views of absorbing interest into the depths.

The TEXACO STAR



Hard surface highway in Marion County, Florida

To the credit of the Asphalt Sales Department most of the Marion County highways are built of Marion County lime rock, Texaco road oil or Texaco asphalt, and slag.

good things as they offered, and the sun, becoming blindingly brilliant as they gazed upon it, shot down shafts of golden light upon the land, christening Central Florida "The Kingdom of the Sun."

SALES DEPT. N. TERRITORY

Chicago District.—The New and Better Gasoline campaign started with a bang on May 7, and we believe our big white signs with the red letters will make those who have not been using Texaco—take notice. As we can not make all the gasoline used—we are making the Best.

Spring housecleaning at bulk stations and filling stations is progressing rapidly, and with the improvement of their appearance and the addition of new bulk stations at Bloomington, Champaign, Danville, Galesburg, Mattoon, Rock Island, Springfield, Watseka, and West Frankfort, we expect to show soon a large increase of sales over last year.

When Arthur Frigeau went to say good-by before leaving for Minneapolis District he was stopped by Creditman Kadlec who presented him, on behalf of Accounting employes, with a gold watch and knife to remind him of Chicago's wishes for his success.

Minneapolis District.—The following stations made 100% collections in April:

Brainerd, Minn.	Ashley, N. D.
Deadwood, S. D.	Bismarck, N. D.
Hecla, S. D.	Casselton, N. D.
Lead, S. D.	Cooperstown, N. D.
Pierre, S. D.	Fargo, N. D.
Sioux City, Iowa	Fortuna, N. D.
Tyndall, S. D.	Grafton, N. D.
Yankton, S. D.	Harvey, N. D.

Parshall, N. D.
Portland, N. D.
Selfridge, N. D.
Stanley, N. D.
Wahpeton, N. D.
Williston, N. D.
Medina, N. D.
Milton, N. D.

Hillsboro, N. D.
Hope, N. D.
Jamestown, N. D.
Lehr, N. D.
Lunds Valley, N. D.
Mandan, N. D.
Mott, N. D.

Texaco Athletic Club held their spring banquet at the Hotel Andrews on April 19 at 6:30 p.m.—a stag affair open to all employes. Thirty-one men were present. The guests of the evening were Earl Johnson, Coach, and H. A. Johnson representing the City Park Board. Mr. H. A. Johnson presented the club with cup for winning division honors in the Commercial League. District Manager Herndon made a short talk. H. M. Miller, President of the Club, was toastmaster. Short talks added to the entertainment, and the banquet was a great success.

Spokane District.—This District has one of the richest mining regions of the world situated in The Coeur d'Alenes within a five hours drive by automobile from Spokane.

The drive from Spokane, Washington, to Wallace, Idaho, is well worth the taking. You go up the Spokane Valley over a paved road, flanked on either side by well kept orchards and beautiful country homes, thirty-five miles to Coeur d'Alene, Idaho, a mountain city where anyone would enjoy a stop for several days. You journey over a well graveled road along beautiful Coeur d'Alene Lake for many miles. Leaving the lake you go up over the divide, down Fourth of July Canyon, and on

Caught within City Limits

Frank Hamilton (left) and Fred Catlin, and their catch in the Salmon River within the city limits of Salmon, Idaho. Mr. Hamilton is affiliated with Agent A. C. Merritt, Salmon, Idaho Station.



The TEXACO STAR

to Wallace through some of the most picturesque mountain scenery that you can imagine.

At Wallace, Idaho, The Texas Company has a Bulk Station from which nearly all of the mines and smelters of this rich mining district are supplied with Texaco products. Texaco lubricants play an important part in the Coeur d'Alene Mines of Idaho.

Representative F. L. Johnson, Zone 2, will soon be wearing a new Texaco gold watch fob as winner of the Spring Order Contest conducted in the Spokane District during the month of March. Representative C. W. Leavitt, Zone 3, took second honors.

Here's one to shoot at. P. A. Beller was appointed agent at Whitefish on March 1, 1926. He doubled his lube and grease quotas for March, increased collection percentage from 15% to 66%, and secured four new accounts.

Representative R. J. Neville was successful in getting a full page cooperative ad in the *Spokane Valley Herald*, April 30, 1926. It was a fine ad, and all the dealers have signed up to have one every two weeks for six months.

J. A. Howser was appointed agent at Seattle, Washington May 4, 1926. Mr. Howser is an old member of the Texaco Family—with the Company for over fifteen years. We know he will make a creditable showing at Seattle.

ASPHALT SALES DEPT.

For eighteen years, the throngs who annually visit Niagara Falls, N. Y., have driven upon a Texaco asphalt pavement. Rapids Drive, which parallels the Falls, was paved with a Texaco penetration macadam pavement in 1908. The long hard service has told but little on it. In fact, when it was suggested this year that a protective coating be placed over it, an official in charge replied: "What's the use? It's the best road in the Park." When the age of the pavement is considered, such a compliment surely bears repetition.

The purchase by Carl Fisher, creator of Miami Beach, Florida, of 15,000 acres on the extreme point of Long Island, N. Y., is a matter of common knowledge. It is also known that Mr. Fisher has expressed his intention of transforming this property into the Playground of the East, even surpassing Atlantic City, N. J. He has set his shoulder to the wheel with characteristic zeal, and among other things has begun the construction of some 20 miles of oiled roads. Profiting by the experience of Long Island towns for many years, Mr. Fisher is using Texaco No. 55 Surfacing Material for the entire mileage.

There was something lacking in Texas highway-building circles. Something or somebody was missing. Then suddenly the missing somebody was restored and all was serene. While "Lou" (L. W.) Kemp was promoting Texaco asphalt in Iowa he was not happy. The years he had spent in Texas had formed ties which could not be severed and at last they triumphed. Once again "Lou" is promoting Texaco in Texas. There is peace in his own heart and satisfaction in the hearts of his fellow Texans.

EXPORT DEPT.

Realizing the importance of the Machinery Section of the Annual Fair at Lille, France, our people succeeded in getting several builders of various kinds of machinery to exhibit signs stating that the machines were using Texaco oils. This was an effective way of bringing our oils to the attention of consumers of lubricants. (The editor regrets that space is not available to show two excellent photographs illustrating the Texaco signs on machinery as described.)

Report from Copenhagen, Denmark, tells that pictures of the booth of The Texas Company, A. S., at the recent International Automobile Exhibition in Copenhagen were reproduced in most of the important newspapers, and our people are quite proud in reporting that His Majesty the King of Denmark stopped at our booth on the opening day and our representative had the privilege of explaining several features of the refining industry to the distinguished visitor. The Exhibition was in a hall built for the purpose, which is to be permanently an Automobile Exhibition Building.

The centerpiece of an exhibit of The Texas Company (Australasia) Ltd. at the recent

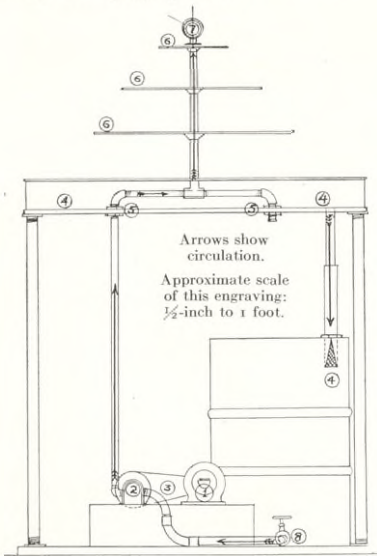


In these troubled days in China it is a good thing to know how to handle a gun, and so as not to get out of practice N. M. Draper of our China organization went a-hunting in the hills near Nanking on New Year's day. The result of the day's effort here pictured does not look so bad.

The TEXACO STAR

Royal Agricultural Show in Sydney, New South Wales, Australia, attracted exceptional attention. The upper part of the contrivance was a fountain of Texaco Motor oil flowing over three plate glass levels making cylindrical films of oil in the travel from plate to plate and from the lowest plate to the pan (See the diagram showing the construction). The lighting arrangement and the clear glass plates were very effective in bringing out the cleanness and beautiful color of the oil. Below the fountain, covering from view the portion of the structure beneath the pan which received the flow from the fountain for its return circulation, were placed the large Texaco Motor Oil Lubricating Guide, while oil field pictures made a suitable background.

Mechanical details of this fountain are given in the accompanying sketch.



Motor Oil Fountain—Sydney, Australia

- | | |
|---|---|
| 1. Electric motor, 1 h. p., A.C., 1400 r.p.m. | 5. Leather joints with back-nuts, table, and pan. |
| 2. Oberdorfer type gear pump. | 6. Glass plates. |
| 3. Belt drive reduction 3 to 1. | 7. Texaco enamel star from comparascope. |
| 4. Pan and return pipe with filter. | 8. Steam stop valve. |

Every wrong thought depreciates the mind.

Page twenty-two



This is a picture of a well known personality on a well known background. The former Kaiser of Germany (wearing straw hat) snapped just as he passed a Texaco sign at Doorn, Holland, by Mr. H. Miles of Rockhampton, Australia.

PURCHASING DEPT. Edward Daniel, of our Houston office, has established a record for the difficult course at Camp Beaty by shooting the nine holes in 39. Edward's father, Hoxie, has shot the course in 45, but we understand he carries a pocket full of sand to tee his ball up in the fairways.

PIPE LINES Our newly appointed Superintendent C. O. Crouch, Houston Division, The Texas Pipe Line Company, entered the oil business with the Prairie Oil and Gas Company and The Texas Pipe Line Company of Oklahoma. In August 1910 he entered the service of The Texas Pipe Line Company at Ardis, Louisiana, as laborer on the construction of the first pipe line laid by the Company from the Ardis Tank Farm to Port Arthur Refinery, later working as laborer, fireman, and engineer at various stations and fields in Louisiana.

In 1914 Mr. Crouch was made foreman in the Louisiana Division, and held that position until 1918 when he was transferred to Humble as Connection Foreman. In July 1919 he was transferred from Humble to Houston as District Foreman, and later transferred to Dallas

The TEXACO STAR



Foreign and native staff of Tientsin, China, District

Picture taken on Mr. Nelson's departure for Shanghai and Mr. Nuland's return as District Manager at Tientsin.

Left to right, standing: K. C. Lu, F. T. Liu, S. Y. Woo, T. Y. Tsai, C. L. Sun, Y. F. Li, Y. T. Kuo, C. P. Ma. Seated: Chang Hsueh Liang (Kweilwacheng Agent), T. S. Chang (Tientsin Agent), J. L. Keane, A. C. Barnes, L. H. Nuland, C. H. Nelson, R. L. Gailey, L. Canda, S. T. Chang, and Y. P. Mi and T. W. Yen (Tientsin Agents).

Division in the same capacity, holding that position until May 1, 1926, when he was appointed Superintendent, Houston Division.

As Mr. Crouch has worked in all the Districts which are now under his supervision, and most of the field employes knowing him personally, a hearty welcome and cooperation is extended to him in his new position.

Former Superintendent H. Fowle, Houston Division, announced his retirement from the Company May 1, 1926, closing a period of 23 continuous years with the Company. Mr. Fowle started his career in the oil game with the Standard Oil Company. He entered the service of The Texas Pipe Line Company at Sour Lake in July 1903, working as engineer and foreman at various places in Texas and Louisiana until July 1912, when he was appointed Superintendent of the Houston Division, which position he held up to the time of his retirement.

Mr. Fowle was well liked by all those who came in close contact with him in office and field and we extend to him our best wishes for health and happiness.

In the resignation of J. G. Quinn, Superintendent at Wichita Falls, effective May 1, The

Texas Pipe Line Company lost one of its most valued employes. During the many years of his service, from District Gauger at Sour Lake in 1906 through various positions to Superintendent at Wichita Falls, Mr. Quinn made numerous warm friends who regret his retirement but hope that it will mean many happy years of well earned rest.

The Arkansas and Shreveport Divisions have been consolidated and O. E. Stimson is Superintendent, headquarters at Shreveport.

F. A. Snakard, formerly of the Natural Gas Department, has been transferred to the Fort Worth Office of The Texas Pipe Line Company as Chief Clerk.

R. E. Ahearn, inventory man in our Warehouse Bureau, has resigned and sailed for Nicaragua to take a position with a company now constructing a railroad into the interior. He will be greatly missed by many friends in our Company.

On May 18 A. H. Royalty, of the Houston Office, and Miss Thelma Chandler were married at the parsonage of the First Presbyterian Church at Houston. The couple made a trip by automobile to Austin, San Antonio, and the surrounding country. Our best wishes.

The TEXACO STAR

SUGGESTIVE INDEX OF CURRENT ARTICLES

Journals cited are gladly loaned, if in our library, to persons connected with the Company. The journal or journals called for will be sent by return mail, unless in the hands of some one who has made a previous request—and in the latter case, as promptly as possible. Please give full and exact mailing address.

EXECUTIVE. Training Foremen to "Manage." Glenn L. Gardiner.—*Industrial Management*, May 1926.

LABORATORIES. Research in the Petroleum Industry. B. T. Brooks.—*Jr. Ind. and Eng. Chemistry*, May 1926, page 480.

Principles Underlying the Use of Equilibrium Oils for Automotive Engines. Robert E. Wilson and Robt. E. Wilkin.—*Ditto*, page 486.

Power and the Viscosity of Oil. Wm. F. Parish.—*Ditto*, page 525.

Motor Carbon Deposits Formed under Controlled Conditions from Typical Automobile Oils. C. J. Livingstone, S. P. Marley, and W. A. Gruse.—*Ditto*, page 502.

Anti-Knock Effect of Natural Gasoline. A. Ludlow Clayden.—*Oil and Gas Journal*, May 6, 1926, page 74.

New Method of Testing Volatility. W. S. James.—*Oil and Gas Journal*, May 6, 1926, page 78.

Symposium on Estimation of Unsaturated Hydro-carbons.—*Jr. Inst. Pet. Techn.*, February 1926, p. 48.

SALES. Details of Construction and Operation of Prize Winning Stations. (Clean Up and Paint Up Number).—*The Oil Trade*, May 1926.

Held His Prices and Picked Up Trade While Other Concerns Cut the Market. Ward K. Halbert.—*National Petroleum News*, May 12, 1926.

Getting a Line on Losses in Gasoline Marketing.—*Petroleum Age*, May 15, 1926.

LUBRICATING. The Relation of Clean Air to Efficient Lubrication. Allen F. Brewer.—*Industrial Management*, May 1926.

GENERAL. Everyman and His Bank. Dale Graham.—*The Nation's Business*, May 1926.

Modern Crime. Forty-three signed articles. *The Annals*, American Academy of Political and Social Science, May 1926.

The Church and the Law. Rt. Rev. Charles Fiske.—*Harpers Magazine*, May 1926.

Bail Bonds and Crime Waves. R. Howard Bland, President, United States Fidelity and Guaranty Company.—*The Nation's Business*, May 1926.

Farmers Don't Grumble to Me. J. F. Jarrell, Manager, Agricultural Development, Santa Fe Railroad.—*The Nation's Business*, May 1926.

Our Railroads Still Compete. Robert S. Henry.—*The Nation's Business*, May 1926.

A Sacrificed Generation—China's Student Victims of a Hybrid Culture. Paul Scheffer.—*The Living Age*, May 8, 1926.



Stockholm, Sweden

This snapshot was taken in the harbor of Stockholm in August 1923 by Mr. K. A. Ericson of Los Angeles, California. He very kindly sends it to The Texaco Star to show, as he says, how well the U. S. A. was represented in Stockholm—with Texaco tank-cars the prominent feature in the foreground and U. S. Cruiser "Pittsburgh" in the background.

Is there any real difference In Gasoline?

YES! All gasolines are different and the difference is largely one of *wetness* and *dryness*.

The Texas Company has announced a *new* and *better* gasoline. It is a dry gas. A dry gas gives each cylinder a better, more even mixture. A wet gas in the manifold floods some cylinders to feed the rest.

This is the difference between the *new* Texaco and all other gasolines. Texaco Gasoline now vaporizes to a *dry* gas in the manifold at a much lower temperature.

Engineers have tried for years to produce such a gas on a commercial scale. The Texas Company's engineers have at last succeeded.

You will notice the results immediately—the easier start, quicker pick-up, increased mileage, and smoothness, and an entirely new freedom from carbon troubles and fouled spark plugs. You will note with pleasure the improved operation and condition of your engine.

Gasolines *are* different, and Texaco is *far* different. Stop at the first Texaco pump you see. Fill with Texaco Gasoline—and Texaco Motor Oil—clean, clear, golden.

The Distillation Test proves it

—by indicating the volatility; the low initial boiling point, balanced distillation range, and low end point.



The Detonation Indicator proves it

—by verifying the smooth flow of power and anti-knock qualities of the new Texaco Gasoline.



The Dynamometer proves it

—by accurately measuring the gain in engine efficiency and the actual work-output delivered.



Your Engine proves it

—by its responsiveness, better hill work, reduced upkeep and better all-around performance.



A **NEW** and **BETTER**
TEXACO
GASOLINE

THE TEXAS COMPANY, U. S. A., *Texaco Petroleum Products*

IF THE PAY ENVELOPES ARE
TO BE REGULARLY FILLED THE
COMPANY'S TREASURY MUST
BE KEPT FILLED AND ONLY
SKILLFUL PRODUCTION AND
HONORABLE SELLING CAN
ACCOMPLISH THAT