



Houston Refinery

# Shellegraph

Friday, October 12, 1973

Volume 38, No. 25

## Honoring Long-Service Employees

### ANNUAL TEN-AND-OVER PARTY TO BE HELD SATURDAY, OCTOBER 27

All employees who will have ten or more years accredited service by the end of this year and all retirees are invited to attend the annual Ten-and-Over Party held in their honor on Saturday, October 27.

The arrangements will be similar to past parties including a buffet meal, hors d'oeuvres and refreshments which will be available from 11:00 a.m. to 5:00 p.m.

This year will be the last party at the Executive Country Club as it has been sold to the City of Houston to be turned into a park.

In 1962, the Houston Refinery employees' Ten-and-Over Party was the first one held under the management of Leonard McNeill, club owner.

The Executive Country Club also has the distinction of being the first club of its kind in the Houston area.

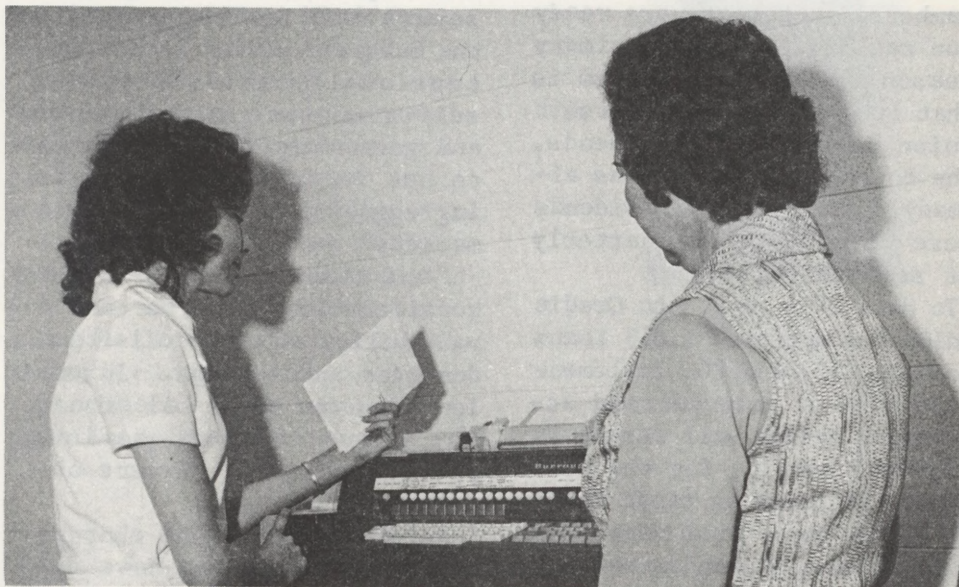


Ten-and-Over Party committeemen met last week to finalize the plans for the annual event. On the committee are, l-r, Robert Gibson, L. J. Hallmark, Glenn Boatright, Bill Davis, seated Ety Mathews and Dotti West.

## SHELL REFINERY EMPLOYEES FEDERAL CREDIT UNION UTILIZING COMPUTERS IN NEW ACCOUNTING SYSTEM

The Shell Refinery Employees Federal Credit Union is updating its accounting system by utilizing modern technology. The Credit Union will begin to use the new, disk storage, computer system this month. This changeover will affect the 9,000 accounts of Shell employees and their families.

The computerization of the accounting system will be utilized by two terminals located in the Credit Union building. The terminals are connected by telephone lines to a computer in Houston which is connected to another computer in Kansas City, thus giving our Credit Union the availability of two computers. All accounts are in the disk storage and an inquiry into a member's account can be done by putting into the terminal's keyboard your account number



Tish McClain (right), office manager, shows Rita Nettles, bookkeeper, how to use the new terminal which feeds the data into computers located in Houston and Kansas City.

and the first three letters of your surname. Within 5-6 seconds the computer will pro-

vide the balance in your account plus other pertinent  
(Continued on page 2)

## CREDIT UNION (Continued from page 1)

data. At the same time it will print out a check for the amount you wish to withdraw provided, of course, your account reflects at least the amount of withdrawal. All loan payments will be put directly into the keyboard which will automatically feed it into the computers.

Information on all accounts will be provided on weekly tab runs and updated with daily reports. Statements will be sent out quarterly instead of monthly, and shortly after the first of the year, each member will receive a coupon book and prepaid envelopes to use for making their loan payments. Any new loans made in 1974 will be handled by the use of a coupon book which will be mailed to the member within a couple of weeks after taking out the loan.

You might ask yourself, why change? The reason, according to Jesse L. Campbell, manager, is that they are being forced to by the increased volume of business. The machinery now being used has become obsolete, particularly in the speed necessary to handle volume business at monthend and yearend. With 9,000 accounts, it takes two weeks, plus overtime, to close out the yearend, then it is late in January before the members' statements are ready for mailing. Another primary reason for the new system is that it will enable the Credit Union to compound dividends. The Board of Directors has already decided to pay dividends more often (either quarterly or semi-annually).

To date this year, the Credit Union has approved 1,819 loans totaling \$5,025,000. Implementation of a computerized accounting system will result in improved service for the members. Although at first there will be some problems, the Credit Union employees are anxious that you feel free to call or come in if you have any questions about your account or the new system. After all, the primary concern of the Credit Union is to do whatever will benefit the members the most and at the same time get the job done.

## PAST MAJOR PORTION OF SUMMER ENERGY CRUNCH SAYS SHELL VICE PRESIDENT, C. L. TOWERS

A Shell Oil Company vice president recently told members of the Alabama Farm Bureau Federation that the United States may be past the major portion of the summer energy crunch and denied recent allegations that the spot fuel shortage situation was purposely created.

Charles L. Towers, of Houston, also said that supply of distillate fuel and gasoline could be tight this coming fall, and is of continuing concern.

"Too much depends upon unknown demand, and both domestic and foreign crude oil availability," Towers said.

Responding to a question concerning the outlook for the winter's heating oil supply, Towers said that Shell estimates the U.S. must import 623 million barrels of distillate and residual fuel oil to meet the 1973-1974 winter demands. "This is a significant increase over last year and in the present tight world market conditions, one must seriously ask himself, 'Is this possible?'"

"There probably is enough spare refinery capacity in the world to meet American heating oil demands for next winter provided the U.S. does not experience an extended severe cold spell; provided the European winter is not exceptionally cold; provided sulfur content restrictions and government price controls do not deter us from competing aggressively in the world market."

"And overriding all these considerations will be the availability of crude oil--both domestic and foreign. In the long run the crude oil crunch may prove the most serious problem of all," Towers observed.

Referring to recent charges that oil companies have deliberately created product shortages and restricted refinery capacities, Towers says Shell denies any question of conspiring or misusing product shortness in any way. "Such charges or allegations have no basis in fact and contribute absolutely nothing toward

solving the problem we face of providing the public with more product."

Towers questioned the use of the word "crisis" in describing what he said was actually an "energy tightness" in the United States.

"There is no massive shortage of gasoline or any petroleum product," he said. "At the present time, there is only a small industry imbalance between product demand and supply."

He said that the lag has caused brief, spot shortages of gasoline nationwide, but that the country will probably manage to get through the peak driving season with only minor inconveniences to some motorists in some areas.

Towers cited four main reasons why: (1) Warm months in the first quarter of 1973 reduced heating oil demands; (2) Refineries were able to boost operating rates; (3) Imports of light oils increased significantly; and (4) Increased demand for petroleum products in June fell off slightly.

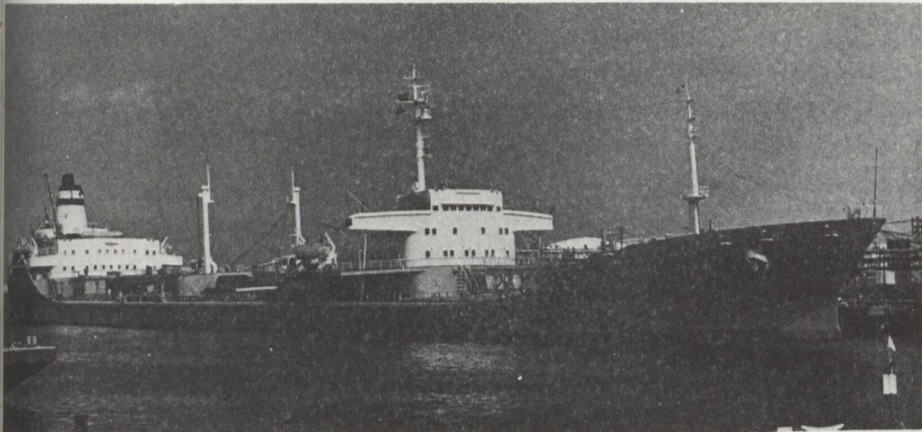
As to just how high petroleum product prices will go, Towers said any answer would be pure speculation.

"We just don't know. We must expect to pay more for petroleum and all energy. Retail prices must eventually seek their proper level. No business, whether it be farming, the oil business, or any other, can long continue to buy high and sell low," Towers said.



"I think we've got problems. He chewed up his diploma from the obedience school."

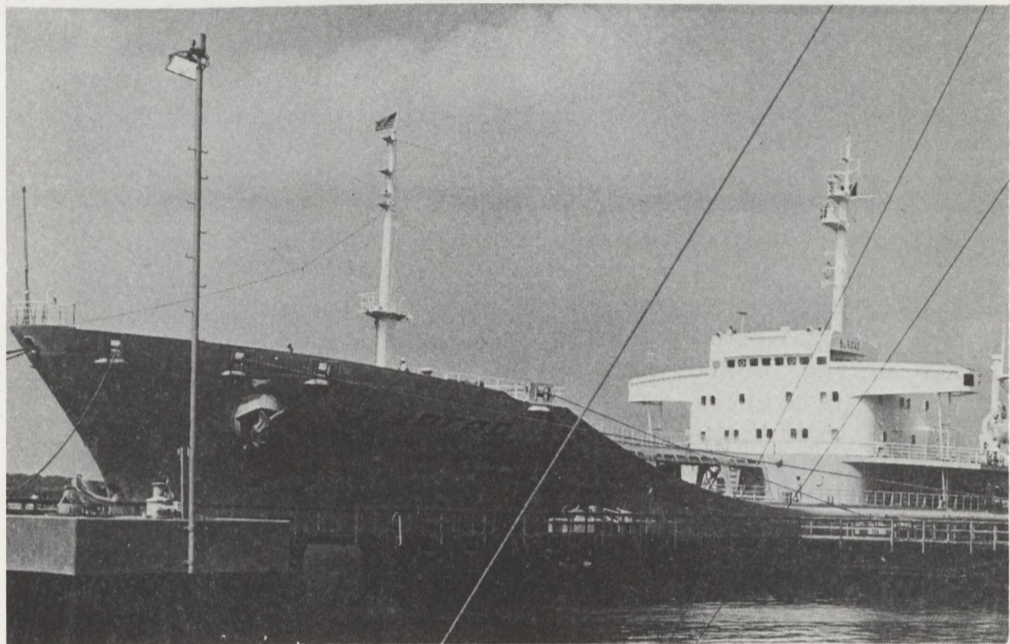
**SLEEK RUSSIAN SHIP, BURGAS, DOCKS AT THE HOUSTON REFINERY**



Note the sleek lines and the extremely clean exterior of the Russian ship, Burgas, which was docked at the Houston Refinery in late September. The crew was seen to wave at those on shore. A pleasant gesture to be sure.

Captained by U. M. Yashny the Russian ship, Burgas, docked at the Houston Refinery September 21 to unload 368 MB of 40.8 API gravity Qatar crude oil. The ship is 772 feet overall with a DWT capacity of 49,370 long tons or 368,000 barrels of crude oil.

Its point of origin was Umm Said, Qatar, in the Persian Gulf.



**WILLS, YOU AND THE STATE OF TEXAS**

Did you know that the State of Texas has made a will just for you? If you do not have a legally prepared will, then, at the time of your death, your property will pass according to the laws of Texas. Distribution of your property may or may not be in accordance with your wishes. For example, if a married man dies without a will, leaving children, owning community property (acquired by him and his surviving wife as common property after marriage) and leaving separate property (acquired by him by gift, devise, or descent, or before his marriage), one-half of the entire community property of the husband and wife would belong to the wife, and the other one-half of the community property of the deceased and his wife would belong to the children or their descendants. Under such circumstances, one-third of the separate personal property such as money, furniture, automobiles and the like, goes to his surviving wife and the other two-thirds of this property goes to his children, and the wife obtains only a life estate in one-third of his separate real estate and (Continued on page 4)

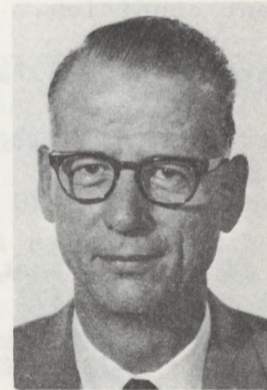
**BEN BALDWIN ACCEPTS SPECIAL ASSIGNMENT AT SHELL CHEMICAL-HOUSTON PLANT**

Ben S. Baldwin, chief technologist, has accepted a special assignment at Shell Chemical working on Deer Park Projects.

Ben joined Shell at the Martinez Refinery as a research technologist. From there he served in Head Office-New York, and at the Wilmington Refinery.

Coming to the Houston Refinery in 1966, he served as process superintendent, Houston Refinery, and process superintendent, Expansion.

He became chief technologist in April 1971.



Baldwin

**SHELLEGRAPH**

Published by Shell Oil Company for its Houston Refinery and MTM Research-Houston employees at Deer Park, Texas.

Mrs. Dotti West - Editor

## CLASSIFIEDS

FOR SALE

Go-Kart motor. Just been re-built. \$25.

Telephone: 479-6613 after 5

Lady Kenmore, white, 5 cycle, Under counter dish washer. Excellent condition. \$50.  
Telephone: 479-6613 after 5

'72 Suzuki, 250 savage with 3-rail trailer. Bike in fine condition. Both for \$675 or best offer.

Telephone: 479-2425 after 5

Dune buggy, fiberglass body. Recent overhaul. 8.25-14 mud grips, tow bar included. \$750.

Telephone: 471-4580 days  
334-1128 nights

738 Terryhollow Dr., Sterling Forest, Channelview. 3-2-1. Large garage, custom drapes in living, master bedroom, and in formal dining room. Many extras including 6-foot cedar fence on wooded lot. White brick with Texas Spanish front.

Telephone: 452-9031

1961 Falcon stationwagon. Clean, new tires, radio and heater. \$175.

Telephone: 473-4616

Central heating unit in excellent condition. 90,000 BTU.

Telephone: 479-3373

Camper cover, 36" high, needs repair. \$50.

Telephone: 473-2170

15' fiberglass boat, big wheel trailer, 67' 40 hp Evinrude. \$650.

Telephone: 472-3018

Office desk, 42"x26"x30". Solid oak. 2 drawers. \$25.  
Telephone: 473-1082

One pair mismatched shoes. New (John Herbst brand) 9½D left and 7½E right. Charcoal brown with buckle.

Telephone: 473-1082

70' lot on deep water canal. Jamaica Beach. West Galveston Island near bay. \$6,000.

Telephone: 472-6101

Scout 70 Model #2, 4-wheel drive. All extras.

Telephone: 645-1155

WANTED

Ride needed from Glenshire East (southwest area) to and from Houston Refinery (8-4:30). Can share rides or could meet somewhere if necessary.

Telephone: 772-4341

PERSONALS

Claude and I wish to thank all of his many friends and associates who helped to make his retirement party such a wonderful success. We shall enjoy using our gifts and viewing the many names on his plaque in the years ahead. Sincerely,  
- Julia and Claude Fisher

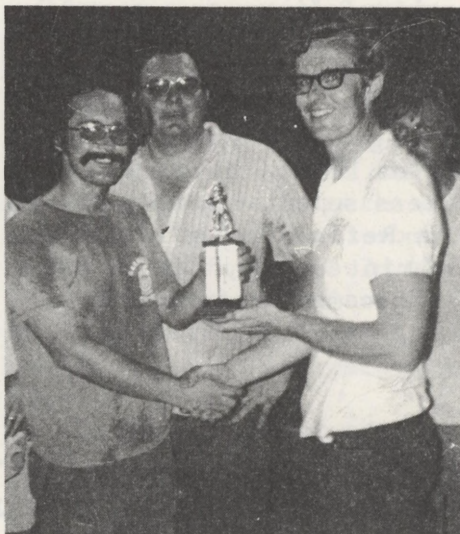
I wish to thank all of my many friends at the Houston Refinery for the nice retirement party and the thoughtful gifts you gave me. I will miss the many years of close friendship I had with all of you. Thanks again for everything.

- Herbie Hall

## TETANUS REMINDER

The second of a series of Tetanus Immunization Shots will begin Monday, October 15, from 7:30 a.m. to 11:00 a.m. and from 12:30 p.m. to 4:00 p.m.

Employees will be notified by their departmental management of when to report for their shots in room 107 in the Main Office Annex (Hospital building) on October 15, 16, 17 and 19.



l-r, Greg Langnau, Research, Gordon Robb and Mike Culling, all Deer Park Jaycees, congratulate each other upon winning second place in the Channel Area Tournament held September 15 at Dow Park.

## WILLS

(Continued from page 3)

the balance of the interest in this real estate passes to the children or their descendants. Is this your wish?

The difference between having your property distributed arbitrarily by law or following your detailed wishes is the difference between a planned and an unplanned distribution. It would seem that everyone would choose to direct the manner in which the fruits of their life's labor be spent.

According to Hank Lewis, Engineering Office, one should have a will to take advantage of the federal tax laws and those of the state in which they reside. A will should not only be looked upon as a means of the disposal of your material goods in the manner in which you desire, but it should also be done in a manner in which you can avail yourself of tax benefits and thereby add to the value of your estate. The inflationary, materialistic era in which we live today permits our estate to easily exceed the exemption limits for federal estate taxes. Your will should be part of an estate plan in which you take advantage of the provisions of the Federal Gift Tax laws to lower your estate worth below the taxable level.

A will should provide for the disposition of all worldly goods and indicate where these goods can be found. It should provide for the care of children in case both of the parents are killed in an accident; it should name an executor who will administer the estate in accordance to your wishes.

Although it is legal to make your own will, there are many pitfalls which can be the subject of law suits. A trained lawyer can prepare a will which avoids litigation and provides for the administration of the estate in accordance with your wishes.

After all, would you engage just anyone to fill your teeth or deliver your baby? when you could have chosen a trained person with the necessary knowledge.

Certainly the fruits of a lifetime of effort are worth a little expense for your loved ones to realize its final benefits.