

Windowalls.



WAYS TO USE ANDERSEN

Complete Wood Window Units In Your New Home

To help you with your plans, here are 29 ANDERSEN WINDOWALLS—walls of windows that frame the scenic splendor of the outdoors, while efficiently insulating the home against less agreeable turns of weather.

Andersen Corporation

BAYPORT • MINNESOTA



PLAN YOUR HOME...

as this one was planned, and you will be delighted with the results. This home received nationwide acclaim just a few years ago as the "Scrapbook Home." For years the owners schemed and dreamed and planned. They clipped ideas that appealed to them from magazines and newspapers, jotted down things they wanted in their home, saved the plans and installations and "built-ins" they wanted.

Andersen recommends this method of home-planning to you, and has published this portfolio to give you the assistance you need as you plan the Windowalls that will bring sunlight and cheer into your home . . . that will open up breath-taking views of the scenes near your home . . . that will act as weathertight barriers between the year-long comfort of the inside of the home and seasonal discomforts outside.



HOW TO USE THIS BOOKLET TO PLAN YOUR NEW HOME...

The Windowalls in this booklet are made by combining stock sizes and designs of Andersen Complete Wood Window Units. Each of these Windowalls already has been built into a home designed by a recognized architect or home designer.

One or several of these Andersen Windowalls may be exactly the arrangement you would like to have in your own home. On the other hand, these Windowalls may give you an idea for a different way to use Andersen Window Units in an installation you yourself design. Note the scaled plans of each Windowall. These plans will enable you to judge what arrangements of windows will fit.



Your architect, builder or millwork dealer can assist you in determining how you can adapt your favorite Windowalls to the home you are planning. In this connection, you should know that when you use stock-size window units in your home, instead of an installation that has to be specially built, you will effect considerable economies. Don't overlook smaller installations on pages 22 and 23.

OTHER ANDERSEN BOOKLETS AND FOLDERS ABOUT WINDOWS YOU'LL FIND HELPFUL TO YOU AS YOU PLAN YOUR NEW HOME



ONLY THE RICH CAN AFFORD POOR WINDOWS

This booklet discusses the reasons, often overlooked, why it is important for home planners to insist on high-quality windows in their new homes. Ask us to send you a free copy.



PORTFOLIO OF WINDOWALL INSTALLATIONS

This attractive portfolio shows 10 fine WINDOWALLS installed in architect-designed homes. More ideas for your new home. Write Andersen Corporation, enclosing \$1 in cash or money.



ANDERSEN DESCRIPTIVE FOLDERS

Our folder for each Andersen Complete Wood Window Unit shows features, materials, sizes and other useful data. Write for those you need—they're FREE.

THE FOUR ESSENTIALS OF YOUR NEW HOME—PERMANENT PARTS THAT MUST BE BUILT RIGHT THE FIRST TIME

1. Footings and Foundation

Your whole house will rest on its footings and foundation. As long as the house stands, the footings and foundation originally built will have to do. Neither will ever be replaced. DON'T SKIMP.



2. Frame or Shell

The timber skeleton (rafters, joists, studs, plates, rafters) of your new house will never be changed once it is built. Nor will the outside walls or the inside finish of plaster or insulating board. DON'T SKIMP on the frame or shell.



3. Wiring and Piping

Wiring and pipes make up the "nervous system" of your home. When they are concealed, replacement is usually so expensive that it is never done. If wiring and pipes are inferior, you'll have to get along. DON'T SKIMP.



4. Windows

Once windows are installed, they become a permanent part of the wall. They are rarely replaced, because this is often a major operation. That's why it's so important to buy good windows. DON'T SKIMP.



Windowalls

ALIVE FOR A LIFETIME

As you plan your home, keep in mind the possibility of a sun-drenched bay of Windowalls like this one. A picture window captures the ever-changing moods of nature, while on each side Andersen Casement Window Units permit ample ventilation.

Note that the owners of this home have fitted into the bay an antique dining board. They could do this only by having casements that swing out, away from the house, like these Andersen units.

Such a broad expanse of windows must be thoroughly insulated, and these are both weatherstripped and double-glazed. Besides, they are made of wood—the natural insulator.



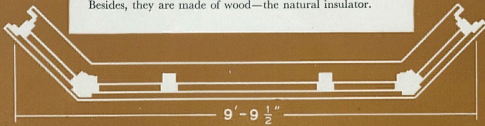
SPECIFICATIONS FOR THIS WINDOWALL

Front—Andersen Casement Picture Window, Number 542.

Sides—Andersen Casement Window Units, Number 2418.

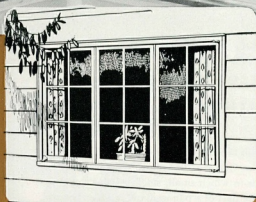
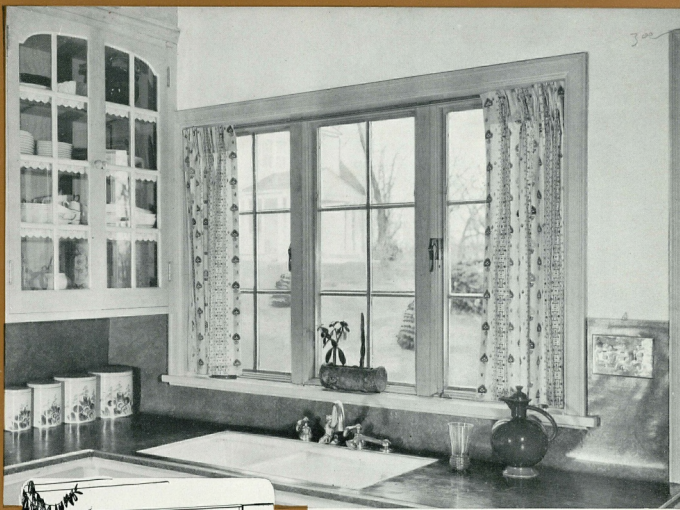
For equipment and alternate layouts, see descriptive folder.

Plan detail shows rough opening size of this WINDOWALL. Rough opening is 4' 6 $\frac{3}{8}$ " high.



9'-9 $\frac{1}{2}$ "

300

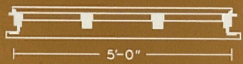


SPECIFICATIONS FOR THIS WINDOWALL

Andersen Casement Window Unit, with divided lights, Number 6336.

For equipment and alternate layouts, see descriptive folder.

Plan detail below shows approximate wall space occupied by this WINDOWALL. Rough opening is 3' 6 3/8" high.

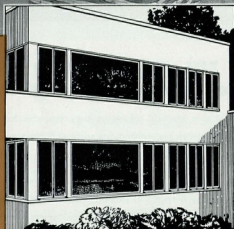


BOTH THE KITCHEN AND ITS WINDOWS BUILT FOR EFFICIENCY

You are probably already scheming how you can have a kitchen that is handy to work in—with extra steps and extra work cut down to a minimum. Well, don't forget the windows.

This trio of Andersen Casement Window Units over the sink is one of the outstanding features of this efficient kitchen. They swing out—not in and over the sink. They open by operating the roto-gear handle rather than by awkwardly raising the sash. They let in plenty of sunshine and fresh air.

On top of all these advantages, these windows can be washed on both sides *inside* the house, because the extension hinges step the sash away from the frame, and the removable screens are *inside*. Only two windows of the three have screens, because the center sash does not operate. In your home you might want all sash to operate.

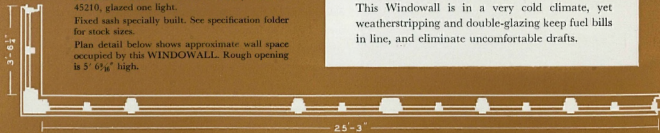


SPECIFICATIONS FOR THIS WINDOWALL

Andersen Casement Window Units, Number 45210, glazed one light.

Fixed sash specially built. See specification folder for stock sizes.

Plan detail below shows approximate wall space occupied by this WINDOWALL. Rough opening is 5' 6 $\frac{5}{8}$ " high.



**IF THERE'S A VIEW, FRAME
IT WITH** *Windowalls*

How many homes there are in which the most spectacular view is walled off from the inside of the home—or in which small, single windows capture only a tiny part of a panorama of outdoor beauty! But the owners of this home didn't deny themselves one fraction of the landscaped beauty of the outdoors—nor of the lovely lake that adjoins their front lawn. A Windowall, formed by a series of Andersen Casement Window Units flanking a large "picture window", is oriented to the view.

This Windowall is in a very cold climate, yet weatherstripping and double-glazing keep fuel bills in line, and eliminate uncomfortable drafts.



SPECIFICATIONS FOR THIS WINDOW WALL

Five Andersen Gliding Window Units, Number 4850.
Plan detail shows approximate wall space occupied.

Windowalls

SPICED WITH A SALT-WATER BREEZE

Life on the seacoast takes on new zest when the home is as thoroughly equipped with Windowalls as this one in West Falmouth, Massachusetts.

Nearly the entire sea side of this home is opened up to bracing breezes and sunlight by a series of Andersen Gliding Window Units, joined together in an expansive Windowwall.

No howling "nor'easter" can bother folks inside, though, because these windows are weatherstripped and equipped with double glazing. And don't forget, you don't necessarily have to have a home on the ocean to make use of windows like this—a wooded scene will do as well.

4'-8"

4'-8"

4'-8"



**QUIET CHARM AND DIGNITY
IN THIS**

Windowall

Of all the inviting corners and nooks in this beautiful Ohio home, none is more satisfying than this dignified bay. Made by a right-angled installation of seven Andersen Casement Window Units, this bay is a quiet retreat that looks out over a large lawn, past the stone wall to distant trees and gently rolling landscape.

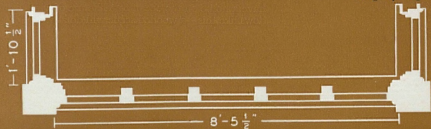
This beautifully draped Windowall is another fine example of the use of stock-size, factory-fitted window units in combinations that give a home unique characteristics of beauty and design.

The wood window units blend perfectly with the interior decor of this room. Ample ventilation is supplied by the four sash that can be swung out and open.



SPECIFICATIONS FOR THIS WINDOWALL

Front—Andersen Casement Window Unit, Number 10555.
Sides—Andersen Casement Window Units, Number 2515.
For equipment and alternate layouts, see descriptive folder.
Plan detail shows rough opening size of this WINDOWALL.
Rough opening is 5' 6 $\frac{1}{8}$ " high.



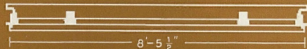


SPECIFICATIONS FOR THIS WINDOW WALL

Andersen Casement Picture Window, Number 353.

For equipment and alternate layouts, see descriptive folder.

Plan detail below shows rough opening size of this WINDOW WALL. Rough opening is 5' 6 $\frac{1}{2}$ " high.



COULD A LANDSCAPE ARTIST DO ANY BETTER?

Call on Rembrandt or Rubens or Rousseau—you still won't find an artist who has ever painted a more realistic scene than the one that "hangs" on the wall of this sunny living room. In addition, this window picture changes every month, providing a scene that keeps in step with the seasons.

This charming Windowwall is a stock Andersen Casement Picture Window Unit with ventilating sash on either side of the large one-light center sash. Note that ample wall space has been left—even in this moderate-size living room.

These Casements swing out, permitting the use of colorful draperies that can be drawn across the entire expanse of the Windowwall when privacy is desired.

Both the Casements and the Picture Window are equipped with weathertight double-glazing that keeps fuel bills down. Screens and double-glazing can be applied and removed from the inside.



Windowall

OF SUNSHINE AND CHEER

"Just like living outdoors," is what you'll say of this sunny, cheerful room, with its large Windowall. With the sun streaming in past dense foliage, it's the sort of room people just naturally like to live in.

These windows don't move up and down—don't swing out and back. They glide from side to side.

These Gliding Windows can be quickly removed from their frames and you have the equivalent of a porch. This removable feature also makes window washing simple.

Equipped with double-glazing that rides on the sash—and screens that can be put on from the inside of the house.

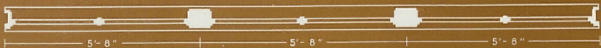


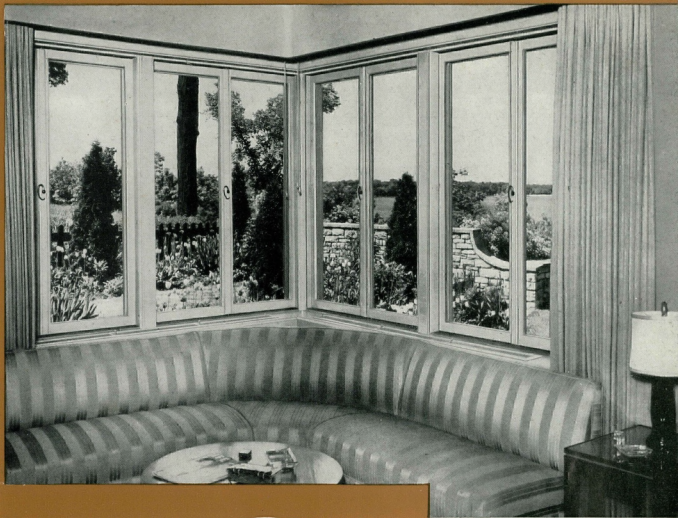
SPECIFICATIONS FOR THIS WINDOWALL

Three Andersen Gliding Window Units, Number 58058.

For equipment and stock layouts, see descriptive folder or detail catalog.

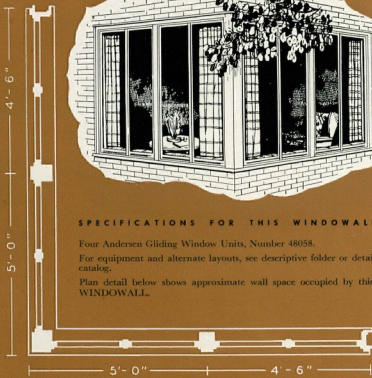
Plan detail below shows approximate wall space occupied by this WINDOWALL.





SPECIFICATIONS FOR THIS WINDOW WALL

Four Andersen Gliding Window Units, Number 48058.
 For equipment and alternate layouts, see descriptive folder or detail catalog.
 Plan detail below shows approximate wall space occupied by this WINDOW WALL.



Windowalls

CORNERWISE FOR A BUILT-IN VIEW

Windowalls aren't always all on the same wall. Quite often they meet, like old friends, in a cozy, sunlit corner. You can well imagine that this Windowalled corner is a focal point for intimate entertaining as well as day-to-day activities. Andersen Gliding Windows are used to frame the garden view and act as backdrop for the comfortable corner seat.

These are the windows that glide from side to side. Their operating principle is so simple that trouble with them is rare. Because they are double-glazed, the corner seat is as comfortable and warm as the center of the room.

THE PATTERN OF BEAUTY IN

Windowalls

Andersen Complete WOOD Window Units

The sash and frame parts of Andersen Lifetime Window Units are made of clear pine, from the vast forests of Oregon, Washington and Northern California.

Wood is a window material without equal. Wood provides attractive shadow lines impossible to achieve with other materials. Wood endures. Wood is a natural non-conductor of heat and cold . . . actually helps insulate your home.

Andersen's refined processes of precision milling, together with the Andersen chemical preservative treatment, assure you windows that will always operate smoothly.

CHOOSE WOOD FOR WINDOWS

Andersen Corporation

BAYPORT • MINNESOTA



**WINTER WORLD
THROUGH . . .**

Windowalls

The frigid beauty of the outdoors in the depths of winter can also be framed by wide Windowalls. The owner of this home enjoys a vista of snow and ice while he sits in the comfort and coziness of the inside.

The entire three sides of this room are Windowalled with large Andersen Gliding Windows. These windows perform the functions of a wall, acting as a barrier that keeps out cold air and keeps in warm air. But the wall they form is transparent, holding and framing the view.

Andersen Gliding Windows are made of beautiful, enduring, insulating wood. Thoroughly weatherstripped, easy to operate, they provide a lifetime of satisfaction and service.



SPECIFICATIONS FOR THIS WINDOWALL

Three Andersen Gliding Window Units, Number 5858.

Plan detail shows approximate overall rough opening size of this WINDOWALL.

See complete specification data.

18'-1 1/2"



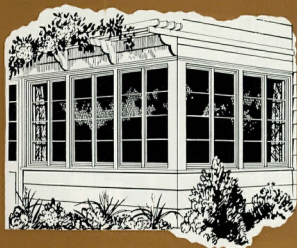
**THIS WAY...FOR SUNSHINE AND
FRESH BREEZES...THROUGH**

Windowalls

Call this a dining room if you wish . . . call it a porch if you wish. Either way you're right, because this home combines both rooms into one. And around two long sides are arrayed a series of spacious windows—forming a Windowall that acts both as window and wall all year long.

The gliding sash that form this Windowall can be taken out in balmy weather—and fresh air and sunshine pour into the home, yet in winter this wall of windows is snugly weather-proof—defying frigid breezes and storms.

Many an open or screen porch is being remodeled with Andersen Windowalls . . . and the Andersen Gliding Window is top choice. Screens and double glazing are optional—depending on the insect protection and winter comfort you need.



SPECIFICATIONS FOR THIS WINDOWALL

Five Andersen Gliding Window Units with horizontal bars, Number 4850.

For equipment and alternate layouts, see descriptive folder or detail catalog.

Plan detail shows approximate wall space occupied by this WINDOWALL. Rough opening is 4' 10" high.

4'-8"

4'-10"

4'-8"

4'-8"

4'-10"



Windowalls

OF SUNSHINE CHEER UP A FRIENDLY CORNER

The windows in this hospitable room deserve a large share of the credit for its air of cheerfulness and charm. They let the sun stream in and trace a pattern upon the floor. Both sunlight and fresh air are let in from two different directions, because this Windowall is formed by the cornerwise union of Andersen Gliding Windows.

This home is used more in summer than winter. That's why the owners chose Andersen Gliding Windows with removable sash.

These windows open by an easy movement from side to side. You can secure from 0 to 100% ventilation. The sash themselves carry double-glazing panels.

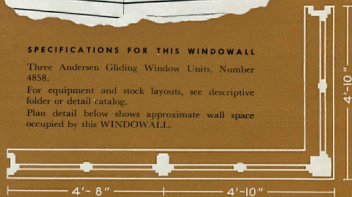


SPECIFICATIONS FOR THIS WINDOWALL

Three Andersen Gliding Window Units, Number 4858.

For equipment and stock layouts, see descriptive folder or detail catalog.

Plan detail below shows approximate wall space occupied by this WINDOWALL.





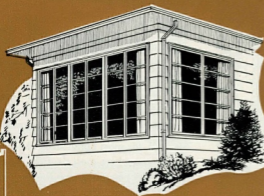
**A SUN PORCH THE YEAR AROUND,
ENCLOSED WITH**

Windowalls

This is a living room—although in years gone by it would have been called a sun porch. But that's the modern way to live—right in the midst of sunshine, with each wall a lifetime picture of an interesting outdoor scene.

This room is Windowalled with large Andersen Gliding Windows. Five maximum-size stock units are used to bring in sunlight and fresh air from three directions.

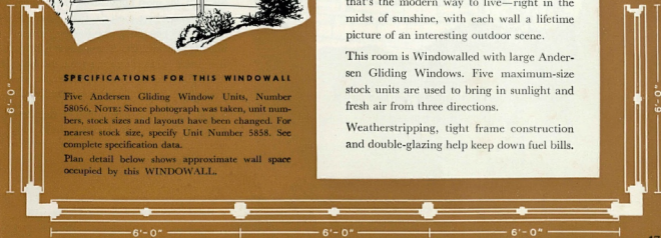
Weatherstripping, tight frame construction and double-glazing help keep down fuel bills.



SPECIFICATIONS FOR THIS WINDOWALL

Five Andersen Gliding Window Units, Number 58056. NOTE: Since photograph was taken, unit numbers, stock sizes and layouts have been changed. For nearest stock size, specify Unit Number 5858. See complete specification data.

Plan detail below shows approximate wall space occupied by this WINDOWALL.





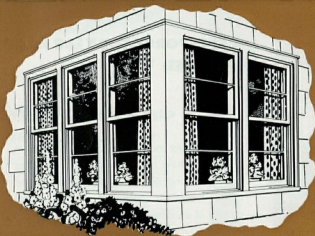
KITCHEN CORNER HAS ITS OWN DELIGHTFUL

Windowall

Here you see clearly demonstrated how much more livable a kitchen can be when a full third of it is devoted to Windowalls of Andersen Double Hung Windows.

After all, for most housewives, the kitchen is the room where most daytime hours are spent. Why not, then, plan it to be as open and airy as possible? Here, though busy, the mistress of the home can get a fine view of a rolling lawn, a nearby street, neighboring homes and all that goes on outdoors.

These windows are completely weather-stripped, and are so precisely built that smooth, trouble-free operation is a matter of applying finger-tip pressure.



SPECIFICATIONS FOR THIS WINDOWALL

Five Andersen Double Hung Window Units, with horizontal bars.

Plan detail shows approximate wall space occupied by this WINDOWALL.





Windowalls

GIVE THE LIVING ROOM A SUN BATH...

We've learned a lot in recent years about what it takes to make a room cheerful and friendly. And one of the easiest ways to do this is by using large window areas. Windows arranged like these bring sunshine into the room for many hours each day, since their corner placement faces the sun from early morning until late afternoon.

This Windowall is formed by one Andersen Casement Picture Window Unit, with two ventilating sash, set at right angles to a standard casement ventilating unit. All these units are stock—that is, they are completely factory-fitted and made of precision-cut wood parts.

This is a thoroughly insulated Windowall in a home designed by an architect for his own use.



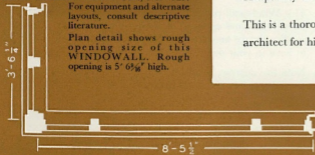
SPECIFICATIONS FOR THIS WINDOWALL

Andersen Casement Picture Window, Number 353.

Andersen Casement Window Unit, No. 4525.

For equipment and alternate layouts, consult descriptive literature.

Plan detail shows rough opening size of this WINDOWALL. Rough opening is 5' 6⁵/₈" high.

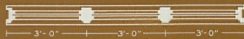




SPECIFICATIONS FOR THIS WINDOWALL

Three Andersen Double Hung Window Units.

Plan detail below shows rough opening size of this WINDOWALL.



AN ARCHITECT'S OWN HOME —WITH WIDE

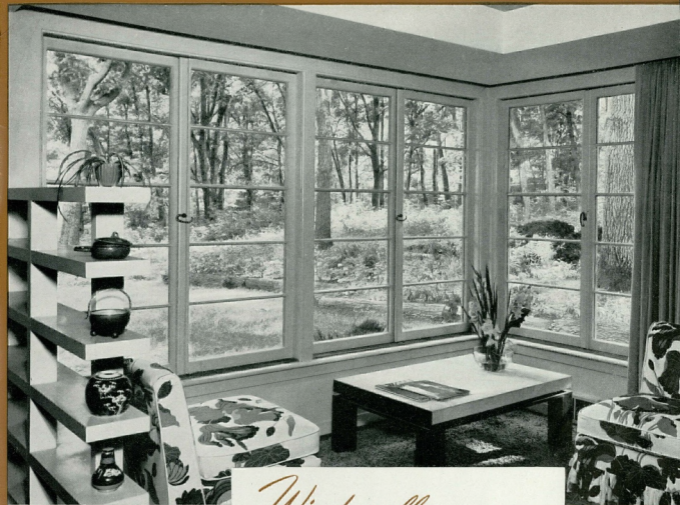
Windowalls

If you want good ideas for your home—check up on the homes architects live in themselves. They naturally save their best ideas for their own homes. That's why we show you this Windowall of Andersen Double Hung Windows.

This home is a typical colonial type—and it was only to be expected that the architect-owner should specify double hung windows. But it wasn't rigidly in conformance with colonial design to range three windows side by side. Our forefathers rarely thought of that.

This Windowall provides a simple, but effective, backdrop for the sofa, and opens up a view of high, arching elms and smaller shrubs and trees—just the sort of setting you'd like to have in your own home.

Note the narrow, sleek lines of these windows. There's no wasted space in the mullions (posts between windows).



Windowalls

PUT THE LIVINGROOM RIGHT IN THE GARDEN

Of course you're planning a garden . . . and perhaps, as in this home, it will be just outside the living room. Ah . . . there's your opportunity to put the living room right *in* the garden, separated from it only by transparent Windowalls.

In this modern home, Andersen Gliding Window Units have been combined in a sun-drenched corner that looks out into a rock garden. Here, on balmy spring and summer days, the owners and their guests can sit and enjoy the flowered beauties of the outdoors. And when winter comes this insulated wall of windows keeps cold winds from coming in.

For 100% ventilation, the sash of these Gliding Windows can be removed. They're new and different and just exactly what you'll like!

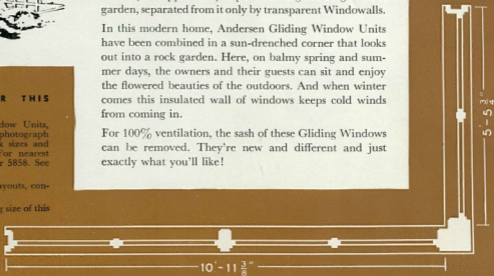


SPECIFICATIONS FOR THIS WINDOWALL

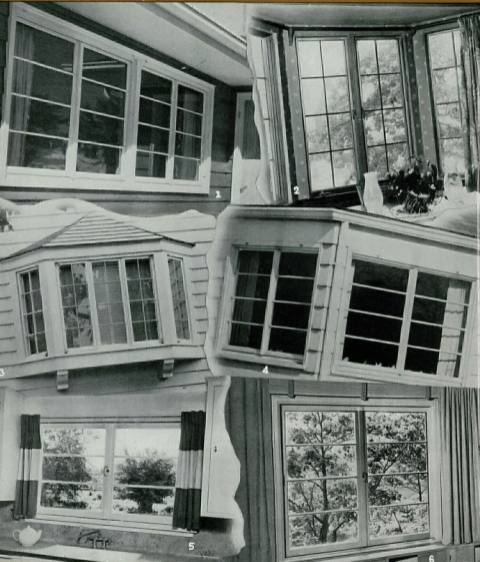
Three Andersen Gliding Window Units, Number 52056, Norx. Since photograph was taken, unit numbers, stock sizes and layouts have been changed. For nearest stock size, specify Unit Number 5856. See complete specification data.

For equipment and alternate layouts, consult descriptive literature.

Plan detail shows rough opening size of this installation.



ANDERSEN *Windowalls* FOR ALL ROOMS FOR ALL STYLES OR SIZES OF HOMES



- 1. Cheery livingroom Windowalled with a pair of Andersen Gliding Units.
- 2. Cozy bay of Casement Windows set at an angle.
- 3. Angle bay of Casements off a bedroom.
- 4. Corner Window in a small home for extra wall space.
- 5. Kitchen sunshine through an Andersen Gliding Window.
- 6. A modern room—a modern window—Andersen Gliding Window.



- 7. A sunny breakfast nook of Andersen Gliding Windows.
- 8. Andersen Double Hung Window in true Colonial style.
- 9. Casement bay; 4 operating sash and a picture window.
- 10. Broad expanse of Windowalls, Gliding Units.
- 11. Window convenience in the kitchen with Casements.
- 12. Window beauty achieved with a triple installation of Andersen Casement Units.
- 13. Lovely lake view framed by a bay of Gliding Windows.

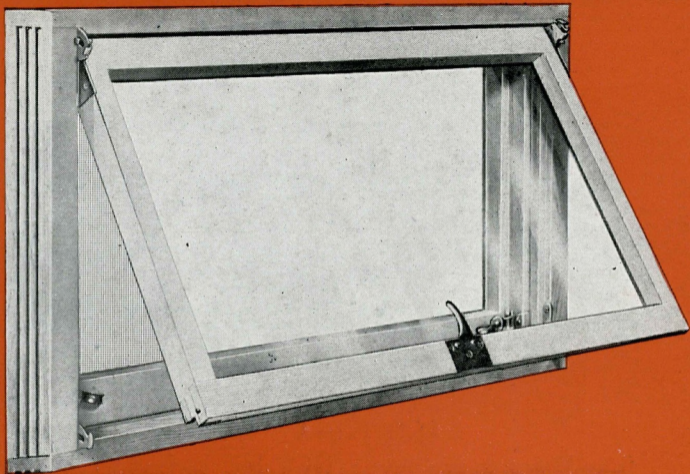


Home of the
WORLD'S LARGEST WINDOW SPECIALISTS

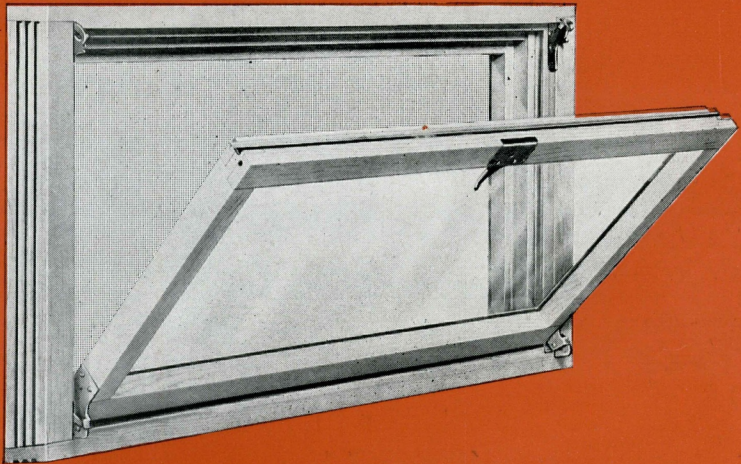
HERE in this modern plant specialists in window design and construction have developed Andersen Windows to the point where they are considered the finest in the field. Using special precision machinery, Andersen Windows are manufactured by production line methods. Windows should be considered as an irreplaceable part of your home. They are seldom replaced. That is why we always say "Only the Rich Can Afford Poor Windows."

Andersen Corporation

BAYPORT • MINNESOTA



OPEN FROM THE BOTTOM



...OR OPEN FROM THE TOP

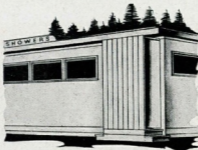
FOR BASEMENTS AND MANY OTHER USES



TOURIST HOMES



VACATION COTTAGES



SERVICE BUILDINGS



TEMPORARY HOUSES



MODULAR SIZES

See complete size schedule on back of this folder. Andersen Basement-Utility Window Units are standardized to fit with 8x8x16 inch concrete block construction. Openings are 2 blocks wide and 2, 2½ and 3 blocks high.



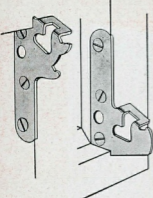
PREFABRICATED

The Andersen Basement-Utility Window Unit is completely prefabricated at the factory—with sash in place, all weatherstripping applied, all hardware applied, and screen installed. No fitting or adjustment necessary.



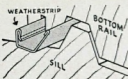
PACKAGED

The completely assembled units including screens are carton packed at the factory, two units to a carton, for protection during shipment, warehousing and delivery.



REVERSIBLE SASH

New dual purpose reversible hinges permit swinging the sash from either top or bottom. Hinge members for both positions are attached and sash can be lifted out and reversed without using tools.



WEATHERTIGHT

Andersen Basement-Utility Window Units are completely weatherstripped with Metalene. Special sash and sill construction still further prevents leakage and infiltration.



TOXIC TREATED

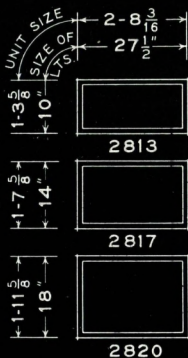
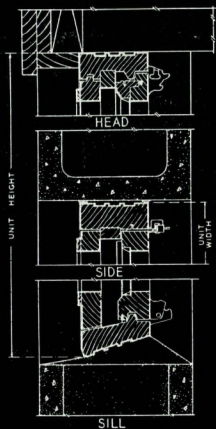
To prevent termite and decay damage, all Andersen Basement-Utility Window Units are given the Andersen Chemical Preservative Treatment. This chemical bath is in accordance with highest industry standards.

Andersen BASEMENT-UTILITY WOOD WINDOW UNITS

Andersen Corporation • BAYPORT, MINNESOTA
MAKERS OF WINDOWALLS... Complete Wood Window Units

INSTALLATION DETAIL

STOCK SIZES



Detail shows standard unit installed in a typical block basement wall. For installation in frame or panel walls, a supplementary outside casing and an inside nailing strip of suitable dimensions should be used. Special details furnished on request.

THE COMPLETE UNIT INCLUDES.

FRAME—GLAZED SASH—WEATHERSTRIPS—SCREEN—
 HARDWARE—PRESERVATIVE TREATING—FACTORY
 ASSEMBLY AND CARTON PACKING—STORM SASH
 ALSO FURNISHED ON ORDER