

SHELLEGRAPH

HOUSTON
REFINERY



No. 132

Thursday, May 13, 1965

MARY JO BOEER SPRINTS TO NEW TRACK RECORD

As a warm up for her forthcoming participation in the 10th International Olympic Games For The Deaf, Mary Jo Boeer entered the 4th Annual Track and Field Meet held May 8 at the Southwest Texas State Teachers College in San Marcos.

Results: Mary Jo set a new track record in winning the 100 yard dash. Her new mark of 11.8 seconds erased the previous meet record of 12.1. She won the 50 yard hurdles in the time of 7.6 seconds, finished second in the 220 yard dash at 24.4 seconds, and anchored the 440 yard relay team which finished in third place.

All of these events produced enough individual points for her to win the trophy as the meet's high point woman. Her team, the Texas School For The Deaf, won the meet with the greatest number of overall points.

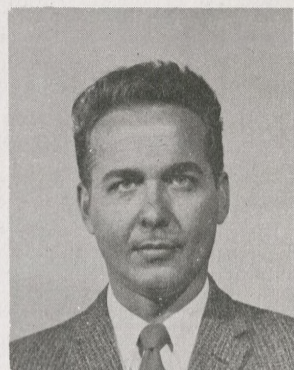
This is the last meet Mary Jo plans to enter before leaving for Washington, D.C. and the Olympics on June 14. The SHELLEGRAPH will be watching and reporting the outcome of Mary Jo's efforts next month.



Pictured above are members of the Chemistry Club of the R. L. Paschal High School of Fort Worth who toured the Refinery recently. They are shown at the Biofilter where C. B. Kincannon (standing left) explained the operation to them. Kneeling in the right foreground is W. R. Davis of Personnel and Industrial Relations who served as a guide on the tour.

H. F. TIGHE TO HEAD NEW TRAINING PROGRAM

Effective June 1, 1965, H. F. Tighe will go on a Special Assignment as Head of an Operational Training Program at the Houston Refinery. He will report directly to Refinery Superintendent A. S. Lehmann during this special assignment.



The program involves the use of a trainer which simulates refinery process operations by duplicating control panels of various processes. Emphasis is placed on the interrelationships among process variables and instrumentation. Upset unit operating conditions can be simulated on this equipment which permits the training of new operators on how to handle these emergencies and other non-routine conditions. It also provides refresher experience for more experienced operators and staff.

The effective use of such a trainer will result in a broader understanding of refining processes by operating personnel and should achieve an increase in personnel efficiency and confidence, and a reduction of operating costs. This training program has been used with favorable results at several other Shell locations.

During this period, S. F. Good will assume the Manager's duties of the Thermal Cracking Department in addition to his present assignment as Manager Gas Department.

FLASHER SEZ: Only 1 week 'till FAMILY DAY, and the latest word is that there will even be a special door prize to be announced next week....be sure to watch for FAMILY DAY colors going up everywhere - they're sorta aviation gas blue and Shellmax 170 tan. The invitations went out last Friday to all Refinery employees.



Liberty....

"Liberty, too, must be limited in order to be possessed."

—Burke

Sometimes, in this present age, when we are confronted with the tensions and confusions of life, we tend to become anxious and bewildered. The world seems wobbly on its axis and the picture of events seems out of focus.

One word which seems to occupy the minds of many of our people is **LIBERTY**. It's a good word but what does it mean? Liberty for what?

We have the right to own property but do we have the liberty to trespass on the property of others?

We have the liberty to drive an automobile but does that liberty give us the right to disobey traffic laws?

We have the right to park our automobile but are we at liberty to park it beside a water plug or block a drive way?

We have the right to walk on a sidewalk but do we have the liberty to force another into the street?

We have the right to enjoy the beautiful scenery of our country but are we at liberty to discard bottles, cans, wrappers and papers on our highways and in our parks?

We have the right to build a house on our property but are we at liberty to disregard the pertinent zoning and planning laws?

We have the right to freedom of opportunity but does that give us the liberty to demand rather than merit?

As Burke pointed out, the very word liberty implies that there must be certain restraints imposed, in order that liberty might exist for all.

The right to use our fists stops where the other fellow's nose begins.

Liberty, under the law, implies that there must be a respect for law in order that the liberty of all might be preserved.

The liberty to have a job certainly implies that the individual must have certain qualifications commensurate with the skills required on the job. To disregard the qualifications would infringe on the rights of those who are qualified for the job.

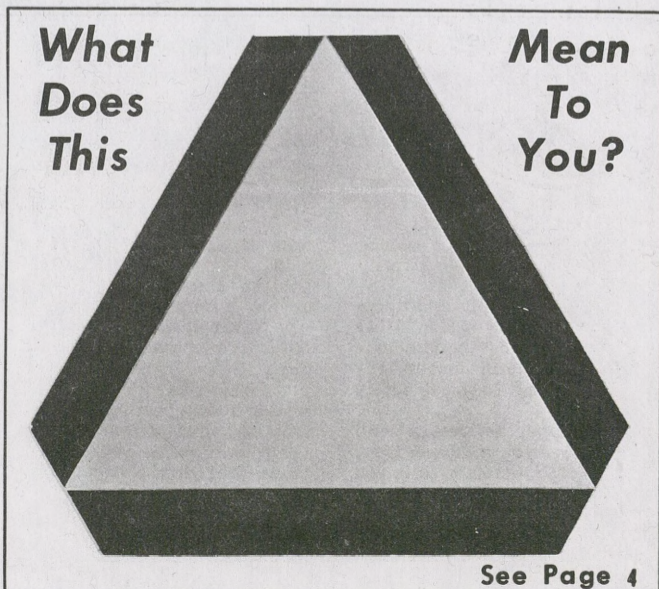
We are a nation governed by laws and not by men. No man is a law unto himself because such a condition would endanger the liberties of others.

Liberty is precious but unlimited liberty for any person, group or organization would deprive others of their liberties. Unbridled liberty is chaos and confusion and detrimental to the common good.

To possess liberty ourselves we must recognize the limitations of our liberty and the liberty of others.

Toynbee, the eminent historian, pointed out that two of the final steps leading to loss of liberty are apathy and dependency.

A "don't care" attitude and a dependency on governmental or other agencies for "cradle to grave" security can lead us to the same doom that overtook 19 great civilizations of the past.



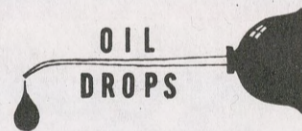
RED SNAPPER PIPE LINE COMPANY IS INCORPORATED

Shell Oil Company and 28 other oil and gas firms have incorporated the Red Snapper Pipe Line Company to construct a deep-water pipeline gathering system in the Gulf of Mexico to bring natural gas and oil to shore. Shell has taken the lead in organizing the venture.

Elected president of the newly formed company at its incorporation meeting in New Orleans late last week was R. L. DAVIS, Manager, Gas Pipeline Development Department, in Shell's New Orleans Exploration and Production Area. D. B. GROSS, an Attorney in the New Orleans Area, was elected secretary.

Tentative plans call for a 30-inch pipeline to run parallel to the Louisiana shoreline about 50 to 70 miles out in the Gulf and to be linked to shore by one or more large-diameter lines. Preliminary estimates are that the 180-to 300-mile line will cost between \$100 million and \$150 million. It is expected that Shell will own 23 per cent of Red Snapper.

The new company's first tasks will be to complete all engineering and design work necessary to build the proposed line, and to prepare an application to the Federal Power Commission for approval of the project. A final decision on whether to proceed with the venture will be made by the 29 participants by the end of 1965.



Engineering Office Manager Terry Lighthouse spoke to the class in Engineering Administration at the University of Houston last week on Decision Making. Economics and Scheduling Manager Harry Estes was also a guest speaker at the University recently. Somebody's "got a little list".

SHELL FOUNDATION AIDS TEXAS UNIVERSITY

Two Shell Fellowships - each valued at \$5,000 - have been allocated to the University of Texas as part of the Shell Companies Foundation, Inc.'s, 1965 aid-to-education budget.

Shell Fellowships are for graduate students and young teachers studying for advanced degrees in science or engineering. The two Shell Fellowships at Texas are designated for the areas of Chemical Engineering, Geology, and Petroleum Production Engineering.

Use Your Shell Credit Card At These Sheraton Hotels

For the convenience of SHELEGRAPH readers a list of the Sheraton member hotels and motels will be published.

Periodically a number of states and the hotels and motels at which Shell Credit Cards may be used will be printed. The second of these appear below.

When all of the lists are clipped and kept together, Shell people will have a readily available, as well as a quick, reference list of these facilities.

INDIANA

French Lick
French Lick-Sheraton Hotel
(812) Wellington 5-9381

Gary

Sheraton Inn
4905 E. Melton Rd.
(219) 938-1127

Indianapolis

Sheraton-Lincoln Hotel
117 W. Washington Street
(317) Melrose 4-1361

IOWA

Cedar Rapids
Sheraton-Montrose Hotel &
Motor Inn
223 Third Ave. S.E.
(319) Empire 4-9111

Sioux City

Sheraton-Warrior Motor Inn
517 Sixth St.
(712) 8-6581

KENTUCKY

Louisville
Sheraton Hotel
500 S. Fourth Street
(502) Juniper 4-4141
Sherwyn Hotel
415 W. Walnut Street

LOUISIANA

New Orleans
Sheraton-Charles Hotel
211 St. Charles Avenue
(504) Jackson 5-8881

MARYLAND

Baltimore
Sheraton-Baltimore Inn
Orleans Street & Broadway
(301) Orleans 5-6800
Sheraton-Belvedere Hotel
Charles Street at Chase
(301) Mulberry 5-1000
Silver Spring
Sheraton-Silver Spring Motor
Inn
8727 Colesville Rd.
(301) 589-5200

BREEDLOVE TO BUILD NEW JET VEHICLE IN TRY AT WORLD LAND SPEED RECORD

Craig Breedlove is building a new jet vehicle in an attempt to regain the world land speed record currently held by Art Arfons.

The car, which is more powerful and more sophisticated in design than the first "Spirit of America", is being sponsored by the Goodyear Tire & Rubber Co., but will again use Shell HMF^(R) Turbine Fuel and Darina Grease^(R) AX. The "Spirit", which streaked along at a record pace of 526.38 mph, was co-sponsored by Shell and Goodyear.

Although Shell will not actively sponsor the new car, the Company will retain advertising and publicity benefits accruing from the use of its products, should Breedlove be successful. Breedlove continues under contract to the Company as a racing consultant.

The "Spirit" is currently on a tour that will end in June with the presentation of the vehicle to the Museum of Science and Industry in Chicago.



Jimmy Hallmark explains the use of a square to Eugene Coan of The Harris County Boys Home at Seabrook. This was one of some 300 pounds of used tools donated by the Refinery to the home.

RESEARCH LABORATORY'S SAM F. DAVIS DIES

We regret to announce the sudden death of Sam Davis by heart attack on May 9, 1965. He was 46 years of age.

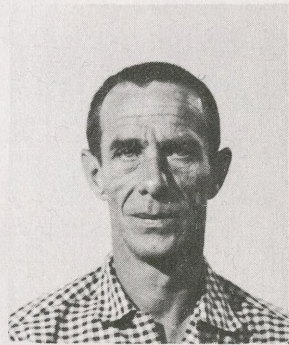
A native of New Brighton, Pennsylvania, Mr. Davis joined Shell at the Houston Refinery Research Laboratory in September 1942 as a Laboratory Technician.

He served in the U.S. Navy during World War II from August 16, 1944, to May 15, 1946.

Following his return to Shell after his Naval service, he became the Research Photographer.

Mr. Davis is survived by his wife, Mrs. Laura Ruth Davis; two daughters, Victoria Davis, Laura Jo Davis, and one son, Frank Samuel Davis.

Funeral services were held at the Heights Funeral Home at 1317 Heights Blvd. at 10 a.m., Wednesday, May 12. Burial was in Resthaven Cemetery.





A COMPETITOR brings progress by his effort to win the customer's favor. The competitor knows that the customer is not dependent on you. You are dependent on him. This means you've got to make better products and better values. The competitor knows that it's the customer who really makes it possible

for you to hold a job at Shell. His rivalry makes the customer the boss, the lifeblood of our business.

CLASSIFIEDS

FOR SALE: 2-Late model trailer hitches to fit G.M. cars. \$45 each.
 1-21" Craftsman Rotary Mower--\$12.50
 1-3/4 Box spring - \$6.00
 1-Electric Pin Ball Machine - \$8.00
 Telephone M. H. Muecke, GR-2-5988

FOR SALE: 21-Ft. Chris-Craft Cabin Cruiser; depth indicator; head; electric bilge pump. \$1500.00
 Telephone GR-9-2263

FOR SALE: 21-Ft. Sea Skiff - 1964 Model. Used 48 hours. 185 h.p. Chris-Craft V-8 Automatic bilge pump (power) - many other extras. On trailer, ready to go - \$3150.
 Telephone: S. F. Ford, WA-6-2404

FOR SALE: All Aluminum House Trailer. Factory Mfg. Clipper. 13' long - easy towing. Water tank, butane stove, butane tank, ice box, sink, built-ins, lights: 12 V - 110 V - butane. Sleeps four. Excellent condition. \$500
 Telephone - OL-4-7389

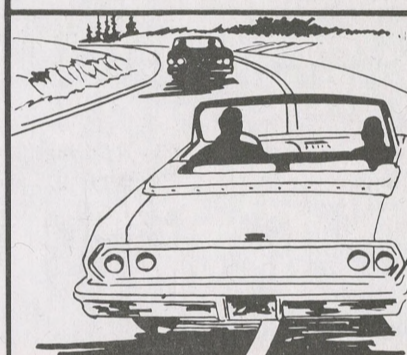
WANTED: Economical work car in good mechanical condition. Telephone - GR-2-4205 after 5 p.m.

Slow-Moving Vehicle Emblem Being Introduced



As a motorist, do you know what a brightly colored triangle mounted on the back of a vehicle means? Knowing might save your life or someone else's. This 14-inch-high emblem, with a fluorescent orange center and reflective red boarder, identifies an SMV, a slow-moving vehicle--one traveling 25 m.p.h. or slower on the highways. Most farm tractors will be traveling 10-15 m.p.h.

ARE YOU A STRADDLER?



Do you find yourself often riding down the center of the road straddling the center line? If you do, you had better do something about it before you smash yourself into an oncoming car. Keep well over to the right, in your proper lane. It helps those coming the other way and the fellow who wants to pass you.

© AMERICAN MUTUAL LIAB. INS. CO.

FOR SALE: 17-Ft. Holmes Inboard - 165 h.p. Telephone - GR-9-2263

PERSONNEL CHANGES

Name	FROM		TO	
	Classification	Department	Classification	Department
W. H. McGuire	General Hlpr. #1	Engr. Field	Pumper-Gauger/Rackman	Dispatching
L. L. Edwards	General Hlpr. #1	Engr. Field	Pumper-Gauger/Rackman	Dispatching
J. H. Littleton	Operator #2	Cat. Crack.	Operator #1	Cat. Crack.
K. C. Roach	Pumper-Gauger/Rackman	Dispatching	Operator #2	Cat. Crack.
J. D. Douglas	Flashpot Operator	Therm. Crack.	Instrument Man #1	Engr. Field
D. Dearman	Operator #1	Cat. Crack.	Instrument Man #1	Engr. Field
W. J. Austin	Dock Hlpr. #2	Dispatching	Dock Helper #1	Dispatching
J. J. Marek	Pumper-Gauger/Rackman	Dispatching	Pumper-Gauger	Dispatching
B. R. Stefka	General Hlpr. #1	Dispatching	Pumper-Gauger	Dispatching