

# UH gets its man...finally

By DAVID RANDELL  
Cougar Staff

Like the Canadian Mounties, the university always gets its man.

In a madcap adventure more reminiscent of the Keystone Cops, UC officials and Traffic and Security officers apprehended an elusive con man who had taken UH for nearly \$2,000 of student money over several months.

In May, the former student pillaged the UC by side-stepping the cashier's name and student number records in cashing bad checks.

Frustrated in his attempts to catch the man, Associate Director of the UC Richard Gage warned the cashiers about the former student.

Much to the chagrin of Gage and the comptroller's office, the bandit struck again by altering the information on his defunct student identification card and passing unnoticed by the cashier. Gage was infuriated.

Madeline Simos, the student operating the cashier's window when the bogus check was passed, was called to Gage's office.

"I didn't threaten to fire her," Gage explained, "but I made it clear that if it happened again I would get someone else to run the booth."

Simos took the cigar-smoking associate director's caution to heart. On the night of May 20, with Gage's words heavy on her heart, the bandit made an ironic return.

Like an alligator smiling at a duck, Simos told the former student that she would be glad to cash his check. Turning from the unknowing con man, Simos notified UC Night Manager Bob Johnson of the return of the straight-faced former student.

Johnson went immediately to the window and greeted the elusive check writer. Assuring him that he was on the verge of approving his check, Johnson called Gage at home.

Speaking cryptically to avoid giving himself away, Johnson made Gage aware of the developments and Gage, in turn, called T&S.

After 11 days in the city jail, the former student and Robert E. Kirkbride, UH

assistant comptroller, met in a judicial hearing over the money the man owed the university from dormitory bills, a student loan and bad checks. Kirkbride said the man was indignant about spending 11 days in the city jail and the felony charges facing him.

Such action will be repeated for other former students ripping off the university.

"We are going to take action when the offenses are chronic," Kirkbride said. "If someone allows a check to sit 40 days after notification, we will prosecute," he added.

UC Director Bill Scott said signs will be posted to notify people of the change in policy and warn them that while they are sometimes slow, they always get their man.

# THE SUMMER EIGHTH CONSECUTIVE ALL-AMERICAN The Cougar



VOL. 40, NO. 92

PLEASE RECYCLE THIS PAPER

HOUSTON, TEXAS

THURS. JUNE 20, 1974

## FORMER HEW REP

# Speaker stirs rights action

By GLENN LEWIS  
Cougar Staff

An organized local strategy to battle student discrimination is strongly needed here, a former spokesman of the Health, Education and Welfare (HEW) Department told students this week.

### Three Basic Laws

Hank Rubin, former National Student Liaison for the Office for Civil Rights, presented answers to some problems of racial and student civil rights during the two-day workshop. He also aided Students' Association (SA) leaders working with the newly-formed Committee on Discrimination.

Rubin met with administrators

to help coordinate a comprehensive "local strategy" to deal with discrimination facing UH students. He said SA's discrimination committee is "a potential clearinghouse for students' civil rights problems and an ideal location for learning just where the problems are."

Debbie Danburg, Women's Advocate, and Luciano Salinas, Chicano Advocate, said they would move on several programs Rubin discussed with them. Danburg said she will begin a permanent file of all complaints of sex discrimination received by her.

Salinas said he plans to poll all UH Chicano students as to any course in which they feel they received a lower grade because of has received numerous com-racial discrimination. He said he

plaints of suspected racial discrimination by some UH professors.

### 'Local Strategy' Formed

Rubin told students that knowing the federal civil rights laws and identifying the problems were essential in dealing with discrimination problems. He cited the Civil Rights Act of 1964, prohibiting racial discrimination; the Education Amendments of 1972, nixing sex discrimination; and Executive Order 11246, prohibiting sex, race, religion or national origin discrimination, as the three basic civil rights laws that apply to higher education.

SA's Committee on Discrimination—created last year, but not yet functional—will be composed of nine members, five of whom will be Student

Senators. SA Pres. Rick Fine said committee appointments will be named next week.

HEW officials will visit UH next week to review UH's Affirmative Action Plan. Rubin advised interested students to meet with these officials to get additional suggestions for dealing with discrimination.

Affirmative Action Plans are required under Executive Order 11246 of all Federal contractors. The plans provide for the correction of discriminatory practices in employment wherever they are found to exist.



RUBIN

# Committee awaits food service bids

By LINDA STELLJES  
Cougar Staff

Proposals are now being accepted by the UC Policy Board Food Committee for the management and operation of the food service in the UC and UC Satellite.

Written proposals will be accepted no later than July 5. From these proposals certain contractors will be invited to meet with the Food Committee to discuss the contractor's proposal and program plans.

The Food Committee met Wednesday to consider proposals for food services to UH.

ARA Food Service, which has served UH for the last eight years, has terminated its contract, effective July 31, due to a loss of \$100,000 and rejection of a management-fee contract. Lack of incentive for new ideas and promotions was the reason for rejection, Asst. Vice-Pres. and Treasurer Treadway Brogdon said.

SA Pres. Rick Fine said the management-fee issue may pose problems in finding a new contractor.

Steve Roche, Food Committee Chairman, said the Food Committee stresses innovation in the contractor's proposal.

"Although there will be an

unavoidable increase in food costs, the Food Committee expects a rise in quality and merchandising," UC Director Bill Scott said. Of primary concern is the type of food service to be used.

Invitations are open. Brogdon is looking for contractors with experience in institutional food business and with adequate financial backing.

Roche says SAGA Food Service and Servomation, Inc. have checked UH facilities for consideration. Handy Andy and Canteen are scheduled for this week. Commercial cafeteria companies will also be contacted.

Brogdon called for promoting the UC to invite more business. "If UH is granted a general liquor license, provided the motion is approved, then business should increase," he added.

The Food Committee, which expanded upon ARA's termination, plans to make annual evaluative reports and hold monthly meetings with the contractor employed. Roche says the committee will try to arrive at a decision within a week after the July 5 deadline.

Roche asks that students contact him at the senate office, Policy Board or UC office to express their opinions on the food service issue.



WONDERS OF THE EARTH, displayed in their natural settings, are revealed through specimens of limestone and

granite which dot the plaza leading to the Science and Research Building.

ED LAWRENCE—Cougar Staff

# perspectives

## Let them burn oil

When President Nixon traveled to the Middle East last week, he pledged that it would be a "journey for peace". Instead he may have added a horrifying new threat to any lasting peace in that area.

While in Cairo, Nixon promised to furnish Egypt with the technological aid necessary to develop nuclear power plants in their country. Almost before our bewilderment turned to shock, he was in Israel promising them the same technology.

It's not quite clear whether or not these promises were part of some "deal" worked out by Secretary of State Henry Kissinger but; should the agreements be carried out, the consequences could be devastating.

Most experts agree that if any country has the know-how to build nuclear reactors, a bomb will not be far behind. With a wealthy ally like Saudi Arabia, Egypt would have no problem finding research monies. They need only wait long enough for their reactors to produce sufficient radioactive materials. This period could be as short as 10 years.

Israel might not have to wait at all. The London Daily Telegraph reported Wednesday that Israel has already built up an arsenal of atomic bombs and it is all too obvious what could happen if Israel had nuclear weapons and was afraid that Egypt was building a similar atomic striking force.

These things cannot happen the State Department tells us. "We will insure that there are strict safeguards against this." These are the same safeguards that Canada promised after offering similar help to India and their ineffectiveness has been made demonstrably clear.

The need for these nuclear power plants is dubious at best. Saudia Arabia alone controls one-third of the world's oil reserves and the massive hydroelectric projects the Rusians have started in the area will provide more than adequate electrical power.

It is senseless to propel these strife-torn countries into the nuclear age. The senate has scheduled hearings on these agreements for later this year and hopefully they will show President Nixon where he went wrong.



'CERTAINLY I BELIEVE ALL HIS PROMISES! WHY, HE WROTE THEM RIGHT HERE IN THE SAND, DIDN'T HE?'

# Input

### To the Editor:

Read the Cougar today. Feel disappointed.

It has failed to take a stand on issues again. One of the issues is Larry Loper (Chairperson for the Young Americans for Freedom), who opposes collective bargaining, U.F.W.A., C.A.R., and feels that Richard Nixon is a super-liberal.

Upon conferring with Loper once, he made the optimistic remark that the John Birch Society has had its ups and downs and the ups for the BS'ers on their way. Instead of taking stands which benefit society, Loper is out attacking the evil forces of

society, one of which he feels is Communism.

I doubt seriously if Richard Nixon is a Communist. However, the Y.A.F. manifesto inexpressedly opposes liberal views, and has vigorously set out to expose the commie liberal moods of campuses around the country.

But I oppose Y.A.F. on other grounds. I am a Catholic. The John Birch Society has traditionally attacked other religions, including Catholicism. My allegiance is to my conscience, and not to Rome. I do have a mind.

I find it rather queer that the John Birch Society who opposes collective bargaining, opposed the

Brown vs. Board of Education ruling by the Supreme Court in 1954 (outlawing segregation), can truthfully all of a sudden attack the Committee Against Racism. Yes, racism is difficult to solve, and so are people's real intentions.

Ruben R. Cano

### LETTERS POLICY

Letters to the editor of The Summer Cougar must be typewritten and not exceed 250 words in length. Letters will be run on a space available basis and will be subject to simple editing.

Commentaries of longer length may be submitted for columns. Letters and commentaries must be accompanied by a name and student number.

### TENURE REFUSED

## CAR calls denial 'racism'

Members of Committee Against Racism (CAR) and other concerned students met with Dr. Ronald F. Bunn, interim dean of arts and sciences recently to protest the Dean's refusal to recommend Dr. James Kelsaw, a black sociology professor, for tenure. We cannot accept the deceit, hypocrisy, arrogance and racism implied by Bunn's rejection of both Kelsaw's colleagues (the sociology faculty)

and his students, several hundred of whom signed a petition last year in appreciation and support of his classes, teaching ability, and the content of his courses. In the considered opinion of those who interact with Kelsaw day to day, Kelsaw merits and deserves tenure.

Bunn however has judged Kelsaw "unqualified" because he does not have a "critical mass" of publications in "refereed outlets."

Apart from the question of whether publications is a valid measure (or the most important indicator) of a teacher's worth, the administration's definition of "adequate publications" is capricious and arbitrary. When Kelsaw was hired here three years ago, UH assured him that publications would be necessary for promotion, not tenure. Only this year did UH formulate new guidelines that make tenure and promotion inseparable.

Even though Kelsaw has been working on a book, UH is now ordering him to publish according to their timetable, or leave.

One white professor successfully challenged this changing of the rules in the middle of the game and won tenure with only one publication. Bunn virtually admitted a racist double standard when he said that one publication would "not necessarily" be enough for Kelsaw.

Despite UH's professed commitment to combat racism and discrimination, it seems to us that the administration is, in practice, guaranteeing that large numbers of black and chicano faculty do not become a permanent part of UH. Out of over 850 full-time faculty at UH, only 16 are black and two of those are now under threat of termination. There are only 6 full-time chicano faculty.

Bunn's explanation for these minute percentages was that UH couldn't find any qualified blacks and chicanos. But upon questioning, Bunn admitted that they hadn't been looking.

Still more oddly, the few new minority professors hired for next year are paid out of the already-underfunded Ethnic Studies Program, rather than through

department budgets.

We feel that the real reasons for the Dean's refusal to recommend Kelsaw for tenure are political and economic, and have nothing to do with "academic standards."

In the past two years there have been massive cutbacks in federal spending on higher education. Caught in a financial "crisis," universities across the country are trimming their payrolls by firing large numbers of professors, both non-tenured and tenured. The remaining teachers are expected to increase their teaching loads, and or to scurry after funding for research projects that will contribute to the university's coffers and prestige.

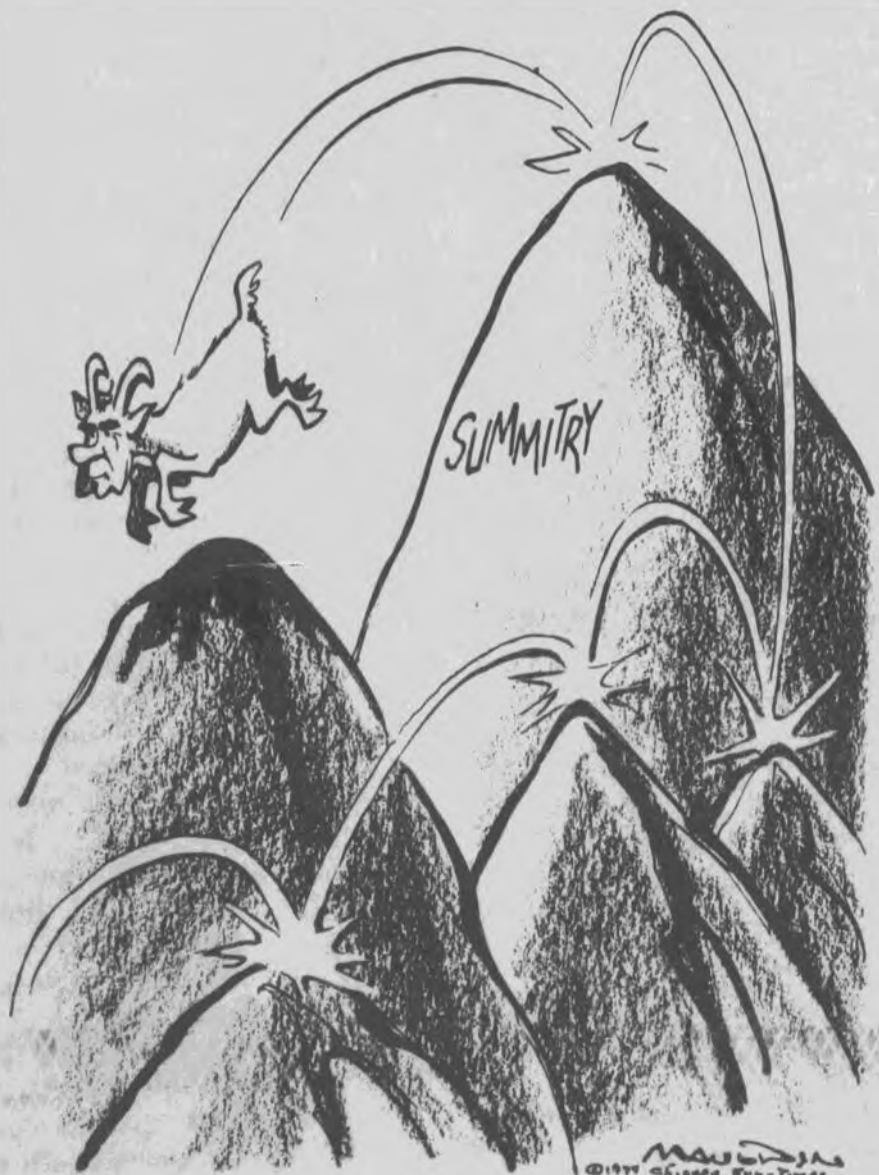
The result is speed-up and hasty "creativity" under threat, which neither benefits the teachers nor the students. The pressure to "produce" makes it impossible for faculty to find time for their

students, and sometimes even for their classes.

In addition, tuitions and fees are creeping (in many places, leaping) upward. In this context, Kelsaw's case represents an effort by the administration to ease its financial woes at our (student and faculty) expense. The UH administration is using racism, disguised as concern for "raising the quality of the staff," to ease (they hope) Kelsaw out the door with as little fuss as possible.

UH is also anxious to rid itself of men and women who raise uncomfortable criticisms of this society and this campus. Since Kelsaw in particular has devoted his efforts to educating students about the reality of racism and its interrelationship with capitalism and imperialism, his continuation at UH undoubtedly, in the eyes of the administration, represents a

(See SPECTRUM, Page 3)



ELUSIVE

# spectrum

## THE SUMMER The Cougar

The Summer Cougar, official student newspaper of the University of Houston, 3801 Cullen, Houston, Texas, 77004, is published in Houston, Texas, by the Student Publications Committee, each Thursday, June through August.

Editor ..... David C. Toney  
 Managing Editor ..... Linda Robinson  
 News Editor ..... David Randell  
 Chief Copy Editor ..... Dale Adamson  
 Sports Editor ..... Norman Grundy  
 Amusements Editor ..... Leon Beck

Opinions expressed in the Summer Cougar are those of the staff or writer and do not necessarily reflect the views of the university administration.

# SA names women's head

Joan Ritters, business junior, was elected director of Women's Affairs by Students' Association (SA) at its Monday meeting.

During her term of office, Ritter said she plans to hold workshops for women on self-defense, rape and counseling in general.

In other actions, SA Pres. Rick Fine appointed Debbie Danburg

as SA representative on the UH Health Center Policy Board.

Joel Jesse, business freshman, was appointed business senator. This will require senate confirmation.

The Senate passed a bill to fund Health Center policy Board member Bobbie Brown's trip to the American Students' Pharmaceutical Convention August 1

through 8 in Chicago.

The Senate voted down a bill that would allocate Omicron Delta Kappa \$350 towards its annual awards day.

A resolution was introduced to the College of Education to establish a bilingual teaching program. It will be sent to the Educational Committee for review.

## SPECTRUM

(Continued from Page 2)  
phenomenal waste of money!

Although it is predictable that the threat of firing will initially be directed at minorities and critics of the status quo, it won't necessarily stop there. White faculty, tenured faculty, and even "mainstream" faculty are just as dispensible when it comes to cutting costs. (See *Newsweek*, 6-10-74, "Tenure in Trouble" P.75)

The decision about tenure for Kelsaw is now in the hands of Vice Pres. Fields. We, the students and faculty at UH, literally cannot afford to standby and allow the administration to ignore student and faculty opinions, to further

institutionalize racism, and to drive away truly qualified faculty. We have an appointment with Fields at 1 p.m. Tuesday in his office. We urge all interested students, faculty and staff to join us for this visit. We will gather at noon on the main floor UC lobby. Our written expressions of opinion have fallen on deaf ears; our collective presence cannot be so easily disregarded.

Marcia Livingston  
Barbara Rascher  
Jerry Wagnon  
Irma Soto  
Gene Soto  
John Scottie

**Beethoven - Bach & Booze**  
*Marfless*

4618 Feagan 2:30 p.m.-2 a.m.  
off of Shepherd & Memorial 861-4030

**Summer Mass Schedule**  
Sunday—10:30 a.m.—122 Religion Center  
Monday through Friday at noon  
201 Religion Center  
Confessions by request before all Masses

**Newman Association Office**  
112 & 203 Religion Center  
Summer Hours: 9:30 a.m. to 3:30 p.m.  
Monday - Friday  
748-6454 and 749-1798

Fr. Joe Konkel, O.P.  
Fr. Dick Patrick, O.P.  
Kay Leeper, Secretary

**CATHOLIC NEWMAN ASSOCIATION**

**UH Coffeehouse**

Texas  
**Reefer Russ**  
Friday, June 21

8 to 1AM  
Admission  
50¢ Students  
75¢ Public

## KUHF to offer varied format this summer

KUHF-FM, UH's radio station, will continue broadcasts despite the fact it received no money from Student Service Fee Allocation and Planning Committee.

Program Director Richard Goldy said the station will present a varied format of entertainment, news, sports and educational programs.

KUHF, which broadcasts at 88.7 FM, offers jazz four nights a week, blues two nights, folk music live from the UH Coffeehouse and classical music on Sunday afternoons. Educational and informative programs include Radio Smithsonian, University Forum, Perspectives on Community Health and First Educations.

"We are not a forum for political or any other type of extremism, neither are we so establishment-oriented that we are afraid to criticize the operation of UH or the city of Houston or anyone else who needs it," Goldy said.

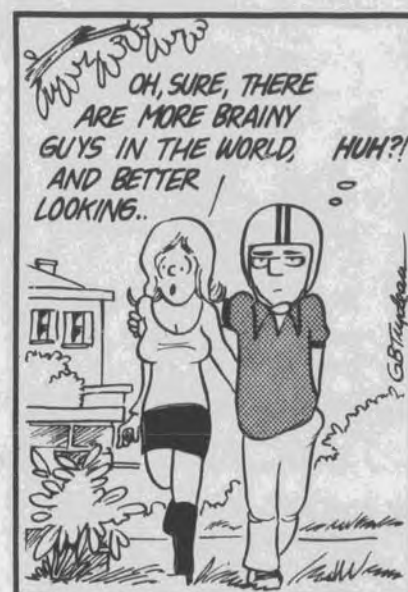
The Daily Cougar will begin Thursday printing a Radio Guide of the week's programming on KUHF, UH's radio station since 1950.

KUHF operates from 3 p.m. until 1 a.m. Monday through Friday, 3 p.m. to 2 a.m. Saturdays and from 2 p.m. to 1 a.m. Sundays. The station is entirely staffed by students, except for the position of general manager.

Goldy said much of the music aired at KUHF is student-suggested. The station's studios are on the fifth floor of the Ezekiel Cullen Building.

## IRS pays firms

(AUSTIN) — Agreements resulting in refunds of \$3,057,890 in overcharges and price rollbacks have been reached by 140 southern Texas firms and the Internal Revenue Service.



## Interviewees needed

Sociologists from local campuses need interviewees to aid in a study of parent-youth conflicts, Janice Scanlan, research assistant in the project, said.

The study, being conducted by students from UH, Rice University and Texas Southern University, needs persons who have experienced family conflicts and are now reconciled.

Scanlan said the study hopes to establish the major areas of conflict between parents and youth and establish the patterns of reconciliation.

The study will be led by UH sociology professors Dr. David Gottlieb and Dr. Janet Chafetz. Interested persons should call the Department of Sociology at 749-4974.

**"Elliott Gould is superb!"**  
—William Wolf, Cue Magazine

COLUMBIA PICTURES presents  
**ELLIOTT GOULD  
CANDICE BERGEN  
GETTING STRAIGHT**

Screenplay by ROBERT KAUFMAN  
Based on the novel by MENKLEB - Music by RONALD STEIN  
Produced and directed by RICHARD RUSH

Friday, June 21 AH 1  
7:00 & 9:00 PM 75c

Pre-Registration

**UH  
Child Care  
Center**

STUDENTS:  
Come to Student Life Bldg., third floor and complete an advance registration form for the University Child Care Center to open Fall Semester '74. This registration does not guarantee a space for your child but it does mean you will receive priority consideration.



88.7

**Summer Programming KUHF-88.7 FM**

| Name of Show              | Time and Date            | Synopsis                                                                |
|---------------------------|--------------------------|-------------------------------------------------------------------------|
| On Campus                 | 3-6 p.m. Mon.-Fri.       | Campus news and activities with a light rock format. Music by request.  |
| Super Soul                | 7-10 p.m. Monday         | Solid Soul by request. (Dave Barrett)                                   |
| Folk '74                  | 7-10 p.m. Tuesday        | Folk music by request. (Anita Vykoukal)                                 |
| Rock Anonymous            | 7-10 p.m. Wednesday      | Rock and roll and fun by request. (Stewart Moser and Ron Dyer)          |
| A History of British Rock | 7-10 p.m. Thursday       |                                                                         |
| Frank the Falcon          | 7-10 p.m. Friday         | Progressive rock and fun from the Falcon's roost. (Frank Rainey)        |
| Jazz Solo                 | 10-1 a.m. Mon. & Wed.    | The best in jazz and interviews music by request. (Tom Jurek)           |
| Best in Blues             | 10-1 a.m. Tues. & Thurs. | Houston's best and most blues show. (Joe Sayre)                         |
| Coffeehouse               | 3-8 p.m. Saturday        | Live folk music from the Coffeehouse in the U.C. (John Turner)          |
| Cosmic Country            | 3-8 p.m. Saturday        | Progressive Country by request. (Stewart Moser and Richard Blanchard)   |
| Where Your Head's At      | 9-1 a.m. Saturday        | Mainly jazz, meditating music. (Dave Riz and Alex Kudich)               |
| Fine Arts Review          | 2-7 p.m. Sunday          | Classical music and news with interviews from the arts. (Richard Goldy) |
| Once Over                 | 9-1 a.m. Sunday          | Mostly jazz, all by request. (Dave Barrett and Alex Kudisch)            |

The On Campus show is hosted by several people.  
 telephone request line is 749-1100 for all shows.

**PROPORTIONAL FEES**

**UH awaits Hill's ruling**

By DAVID RANDELL  
 Cougar Staff

(Last of a two-part series)

The Opinion Committee of the state Attorney General's Office has finished drafting its latest opinion of House Bill 83, the proportional student service fees bill.

A spokesman for the Opinion Committee declined to say when the opinion would be released because the opinion must first be approved by Atty. Gen. John Hill.

In a letter to Committee Chairman David M. Kendall, Students' Association Director of State Affairs Ed Martin urged the committee to strike down an earlier ruling which stated that only students taking a "maximum course load" may be charged the maximum student service fee of \$30.

Instead, Martin suggested the committee adopt a "minimum full-time student" approach to application of the maximum \$30 fee.

In his letter Martin charged the committee with usurpation of the Board of Regents' legislative function. The Regents, to avert a loss of revenue, established a pro rata system of charging student service fees. To collect the maximum service fees needed to maintain revenue, the board lowered the maximum course load at UH from 15 to 12 hours.

To avoid a mountain of paperwork from students requesting overloads at the next registration, Regent Chairman A.J. Farfel asked Martin to send his letter to the Opinion Committee.

Martin claims that student service fees are abused at universities who spend student money under accounts like "miscellaneous expenses" and other nebulous titles.

These accounts, he claims, finance political activity by university administrations and unauthorized construction unrelated to student activity. Such spending is a clear violation of the Education Code.

Martin claims that some

universities in the state also commingle the interest from student service fees with general university accounts. This is also prohibited by law.

Student leaders at UH discount the possibility of such abuses here, citing an attitude of fairness within the administration.

Martin, who is active in the Texas Student Lobby, says the abuses take place at smaller universities with less organized student leadership.

**Alternative university offers student options**

An alternative university has opened in Houston for those whose lives don't run in neat semesters.

University Without Walls, 3602 Navigation, specializes in self-based learning, using various resources to complete college credit, Director Ted Grossman said.

"Rather than going to one place, such as a campus, UWW students are free to use a variety of educational resources...at home, at work, in the community or even other colleges," he added.

Grossman said the institution would look at all options in a student completing a degree. The

program is aimed at those who are turned off by collegiate factories, yet want an academic degree either because of personal satisfaction or as a necessity for a career, he added.

Counselors and workers at UWW consider themselves coordinators of the community, Grossman said, working with neighbor colleges.

UWW is expected to be accredited by the North Central Association of Colleges and Secondary Schools by next spring, Grossman said. The university is now accredited by the Union for Experimenting Colleges and Universities (UECU).

**Bikers to ride for cancer**

Entries are now being taken for the Fourth of July Bike-a-Thon for Cancer, an all-day charity bicycle marathon starting from Sam Houston Park downtown.

The Bike-a-Thon is part of the Downtown Old Fashioned Fourth of July Celebration which will cover the entire downtown area from the park to Allen's Landing

at Franklin and Main.

Participating riders must get sponsors to pledge money for each mile ridden, Mary Griffiths, general chairman, said.

Over \$3,000 in prizes will be awarded in categories such as most miles ridden, best-decorated bike, fastest time, oldest rider, greatest number of sponsors, etc. Prizes include a \$1,000 shopping spree at Joskes, 10-speed bikes, a 14-foot sail boat, a canoe trip party down any Texas river and others.

The ride will leave the park, 1100 Bagby, at 8 a.m. July 4, circle through Memorial and River Oaks about 20 miles and return about 1 p.m. to catch a City Band Concert at Sam Houston Park.

Interested persons should call the American Cancer Society, 528-2877.

For Super Commercial and Fine Art Supplies in Southwest Houston  
**CANARY HILL GALLERIES**  
 3033 Fountain View  
 Houston, Texas 77027  
 783-8990

Be a **PLASMA DONOR**  
 instant cash

**BLOOD BANK OF HOUSTON**  
 7:30-4 P.M. Mon.-Fri.  
 5104 Almeda 529-4045

**NOW LEASING**

2 Bedroom Unfurnished \$135 & up  
 Furnished \$175 & up  
 1 Bedroom Unfurnished \$135 & up  
 Furnished \$160 & up



Utilities Paid 3 Swimming Pools  
 3 Minutes Walk Recreation Room  
 from Campus Security Guard

For immediate occupancy  
 Exclusively for UH Students

**COUGAR APARTMENTS**

747-3717 5019 Calhoun

**pre-law?**  
**pre-prepare.**

The next LSAT is July 27! Improve your score with the proven prep course!

The LSAT Review Course consists of 20 hours of classes taught by a qualified attorney. Learn critical timing techniques, types of questions and how to answer them plus valuable methods for squeezing out a few extra points.

**Class schedule for July 27 LSAT:**

Mon. July 15, Wed. July 17  
 Fri. July 19, Mon. July 22  
 Wed. July 24

All classes at The Continental Houston Hotel, 101 Main at Franklin, 6-10 p.m.

For more information, free brochure and registration form call 524-5711 or write: LSAT Review Course of Texas, Inc., 3407 Montrose, Suite 202, Houston 77006.



**LSAT REVIEW COURSE**  
 OF TEXAS, INC.

HIGHEST RISE OF ALL  
**HIGH RISE**  
 IN COLOR  
 ADULTS ONLY  
 rated-R

Featuring the National Lampoon Foto Funnies girl!  
**WOW**

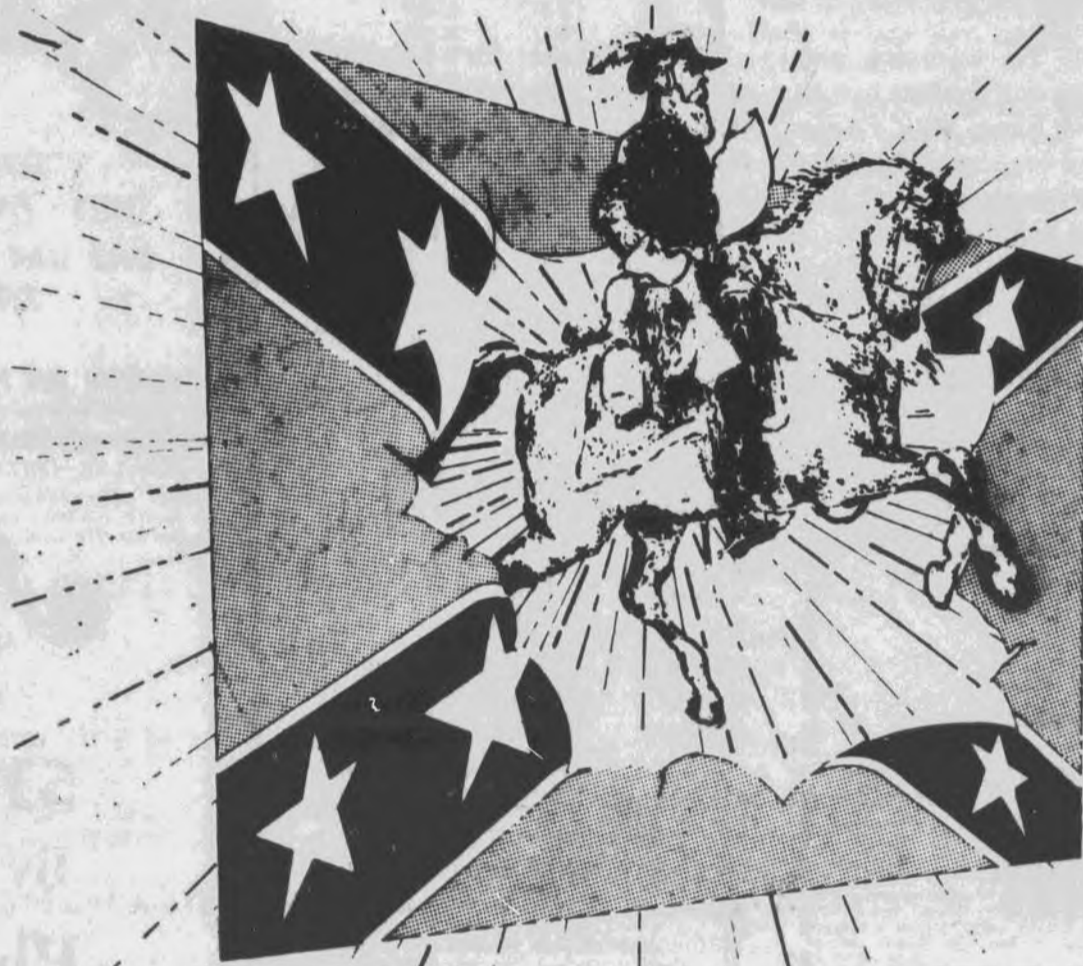
**CINEMA WEST ART THEATRE**  
 OPEN 10:45-A.M.  
 5341 WEST ALABAMA  
 Phone 826-0279

Plus a new first run second feature every Tuesday

**SUMMER CAMPAIGN '74**



# **THE ALLMAN BROTHERS BAND**



**COMMANDER CODY  
and his Lost Planet Airmen**

**TICKETS \$7.50 ADVANCE \$10 AT THE GATE**

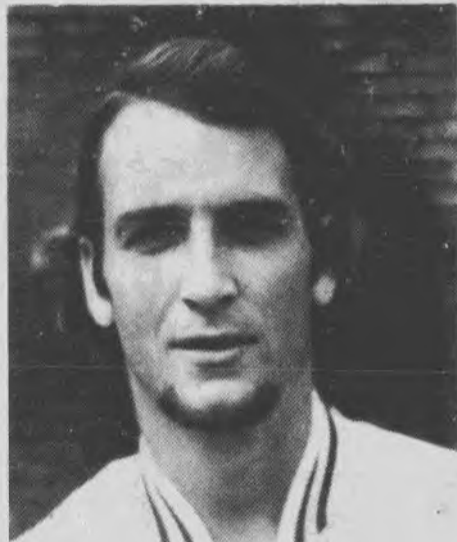
**AVAILABLE AT U.C. TICKET OFFICE & DISC RECORDS  
\$1 DISCOUNT FOR UH STUDENTS AT U.C. TICKET OFFICE ONLY**

**Presented by KILT and U of H Program Council • Gates Open at 2PM  
U of H Student Discount at U of H Ticket Office Only  
NO BOTTLES, CANS OR ALCOHOL ALLOWED IN THE STADIUM**

# Netters, Golfers competing in NCAA championship meet



WALKER



OGLE

By **NORMAN GRUNDY**  
Sports Editor

NCAA championships dictate action for two Cougar squads this week. The Tennis team is still involved in the national tennis tournament being held in Los Angeles California, while the golf team is seeking national title number thirteen at the golf finale in San Diego.

Both squads seem to have excellent chances at bringing home championships, however several situations have developed which could hinder the teams' success.

In the tennis competition, all four Houston singles players Lee Merry, Bob Ogle, Dale Ogden and Ross Walker have advanced beyond the first round.

Merry took Phil Traham of Northeast Louisiana three sets before finishing strong 7-6, 2-6, 6-0. Ogden had a tough time also, but managed to win out over Kenny Daniels of Miami 6-1, 6-7, 6-5.

Senior Bob Ogle, the only Houston player not to draw a

bye in the first round, toppled former high school rival Dick Miller of Pepperdine 6-1, 4-6, 6-1. Ogle appeared to be the most consistent of the Houston netters after dropping Bill Wright of Texas A&M 6-4, 6-2 in the second round.

Former Junior Clay Court King, and this season's most valuable tennis player Ross Walker made it four in a row for the Coogs when he downed Scott Kidd of Southern Illinois 7-6, 2-6, and 6-0. The Coogs are currently tied for third place with North Carolina and Trinity, each with ten points.

In the doubles matches, Houston did not fare as well. The big blow came when the third seeded team of Merry and Ogden were upset by Bob Wright and David Eastman of California Irvine, 3-6, 6-3, and 7-6.

Coach Paul Christian, who was nominated for NCAA coach of the year, called the defeat, "very damaging". "We were counting on at least four points from our doubles team, and now we have to collect all our points in singles which is an awful lot to ask."

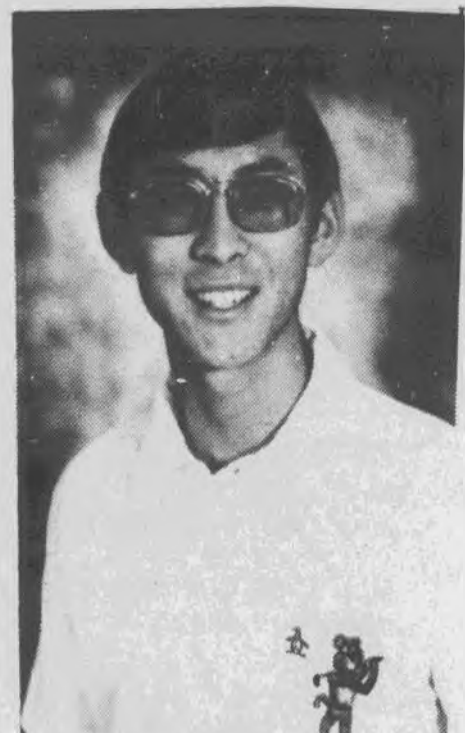
Christian also sighted teneness due to the Cougars first NCAA championship quest as a factor in the defeat of the doubles team.

A few miles to the south at Carlton Oaks golf course in San Diego, coach Dave Williams, veteran of 12 NCAA championship quests, the most recent coming in 1970, has entered sophomores Keith Fergus and Robert Hoyt, juniors Bobby Brow and Van Gillen and freshman David Ishii, individual medalist in the AAI tourney held last April.

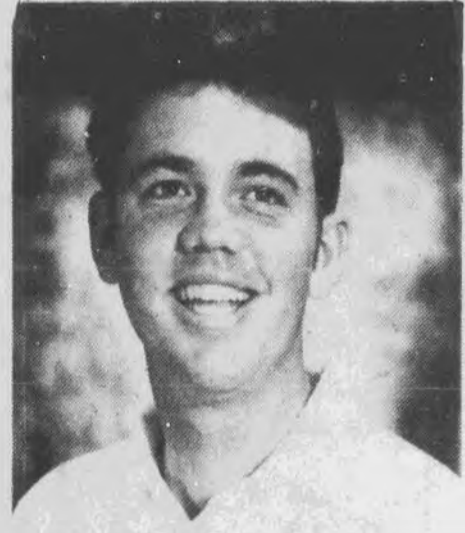
The Coogs rank sixth behind the favored Florida Gators and admit that the Carlton course may be their biggest obstacle.

"The course is much tighter than I remembered Williams says and the long hitters will have the most luck. The eventual winner will probably have to shoot somewhere around 1,152 he predicted."

The NCAA golf tourney continues through Saturday with top rated Southern Cal and Texas also competing for the title.



ISHII



HOYT

## Summer bowling tourney revised

John Wilson of the intramural department has announced a change in format for the Summer Intramural Bowling Tournament which will get underway in two weeks with entry deadlines on July 3.

The bowling competition has been divided into three classes based on cumulative averages with one class consisting of 130 averages between 150-130, and a third class for those with averages above 150.

There will be women's and men's, singles and doubles events in each class along with Co-rec mixed doubles competition. Awards will be given in all five categories of each division.

In other intramural news, the deadline for table tennis has been extended until Thursday at noon, with putt-putt golf entries also being due at that time.

The putt-putt tourney is a new intramural activity and will be conducted on a best ball basis.

The deadline for handball participants has been extended until Friday, June 21 when entries for foosball, air-hockey and golf (medal play) are also due.

For any information concerning scheduling and game times, contact the intramural department at Ext. 4386 or stop by the office at Room 104c of the men's gymnasium.

## Prepsters signed

New UH Baseball Coach Rolan Walton has signed four more outstanding high school baseball players to inter-conference letters of intent.

Walton announced Tuesday that Kevin Rupp of Baytown Sterling, Joe Billingsley of Ft. Worth Paschal, Mark Wisnoki of St. Pius and Kim Graham of Houston Madison will all enroll at UH in the fall.

Coach Walton talked about his players on Tuesday.

"Rupp is a rangy shortstop who hit .351, he said. The 6-2, 180 pounder has a fantastic arm and will join with Ken Humphreys to give us an outstanding young double-play combination." Humphreys, a prep all-star second baseman, recently signed with the Coogs.

Walton said Billingsley was a two-time all-district basketball and baseball player at Paschal. Academically, he is an "A" student.

Wisnoki, a high school teammate of Humphreys, finished among the top 20 hitters in greater Houston this spring. The right-hand batter hit .384 and plays both infield and outfield.

Another top hitter, Graham finished among the top 10 in the Houston independent school district in batting with a .385 average.



LEARN TO FLY:

Rental & Flight Instruction  
6-150;—U206;  
Mooney MK-21. Hobby  
Airport—645-4605

**Shirar's** RALEIGH  
BICYCLE STORE  
"SERVING HOUSTON SINCE 1912"  
SALES • PARTS • ACCESSORIES • Specialist on all 10 Speeds  
ONE DAY REPAIR SERVICE ON ALL MAKES  
320 Winkler (At Woodridge)  
Phone: 645-9455  
Mention Ad for Discount on Parts, Labor, Access.

**Albert's**  
HAIR DESIGNS FOR MEN  
519 W. Alabama  
By Appointment Only  
Phone 529-3125  
Mention this ad for discount

VIDEO TAPE NETWORK  
**SON OF MOVIE ORGY**  
The wonderful world of the 50's  
reborn on Video Tape  
UC SATELLITE MON. 24-FRI. 28  
CONTINUOUS SHOWING  
P.C. Video Free to all

RENT A CANOE  
FOR THE WEEKEND!  
10% DISCOUNT  
on both Canoe & Camping Equipment  
with this coupon and U.H. I.D. Card  
**HOUSTON CANOE SALES  
& RENTALS** 3116 Broadway Houston, Texas  
645-9855 645-0693

Earn Extra Cash  
for yourself, for your organization  
Earn up to \$50 a month  
Donate Blood Plasma  
To Help Make Life-Saving Drugs  
**UNITED BIOLOGICS**  
PLASMA CENTER  
1520 Capitol Street  
Houston Phone 225-9177 Open 6:30 a.m.  
to 2:30 p.m.  
AH Group Donations after 2:30 by Appointment

# Attention!

UNIVERSITY OF HOUSTON STUDENTS,  
FACULTY & STAFF

USE YOUR  
CARD

PRESENT YOUR UNIVERSITY I.D.  
OR CAPITOL MEMBERSHIP CARD  
TO MAKE PURCHASES  
AT ANY  
CAPITOL WAREHOUSE

SAVE YOUR  
MONEY

Special arrangements made with Capitol Tire Sales/Warehouses, Inc., the world's largest and most respected Tire Wholesale Warehouse organization, allows each member - (without cost or obligation) - the opportunity to take advantage of this money saving group program.

A SPECIAL WHOLESALE WAREHOUSE ...

## Group Purchase Plan

through



CAPITOL TIRE SALES/WAREHOUSES, INC.

(NOT AVAILABLE TO THE GENERAL PUBLIC)

### BELTED TIRES

#### 35,000-MILE GUARANTEE

##### 78 SERIES

Manufactured by one of the world's largest tire makers. Whitewall. Lifetime road hazard, workmanship and materials guarantee. 35,000-mile tread wear guarantee.

| Size   | Cash & Carry Warehouse Group Price | Fed. Excise Tax |
|--------|------------------------------------|-----------------|
| A78-13 | 18.90                              | 1.80            |
| C78-13 | 19.70                              | 2.00            |
| E78-14 | 20.74                              | 2.33            |
| F78-14 | 21.30                              | 2.50            |
| G78-14 | 22.73                              | 2.67            |
| H78-14 | 24.80                              | 2.92            |
| G78-15 | 22.96                              | 2.74            |
| H78-15 | 24.94                              | 2.97            |
| L78-15 | 26.99                              | 3.19            |

### 40,000-MILE GUARANTEE

#### EXTRA STRENGTH

#### FIBERGLASS BELTED 4 + 2

The strongest ever! Manufactured by one of the world's largest tire makers. Whitewall, 4 full ply polyester cord + 2 fiberglass cord belts, 6-ply tread. Lifetime road hazard, workmanship and materials guarantee. 40,000-mile tread wear guarantee.

| Size   | Cash & Carry Warehouse Group Price | Fed. Excise Tax |
|--------|------------------------------------|-----------------|
| A78-13 | 21.57                              | 1.78            |
| C78-14 | 23.73                              | 2.07            |
| E78-14 | 25.66                              | 2.24            |
| F78-14 | 26.79                              | 2.41            |
| G78-14 | 27.87                              | 2.55            |
| H78-14 | 29.32                              | 2.77            |
| J78-14 | 29.97                              | 2.95            |
| F78-15 | 26.98                              | 2.42            |
| G78-15 | 28.73                              | 2.63            |
| H78-15 | 29.87                              | 2.82            |
| J78-15 | 30.91                              | 2.99            |
| L78-15 | 32.72                              | 3.13            |

### STEEL BELTED

#### 45,000-MILE GUARANTEE

#### STEEL BELTED SUPER 70

Belts of steel and polyester cord — manufactured by one of the world's largest tire makers. Whitewall. Lifetime road hazard, workmanship and materials guarantee. 45,000-mile tread wear guarantee.

| Size   | Cash & Carry Warehouse Group Price | Fed. Excise Tax |
|--------|------------------------------------|-----------------|
| D70-14 | 26.94                              | 2.57            |
| E70-14 | 27.87                              | 2.76            |
| F70-14 | 28.93                              | 2.90            |
| G70-14 | 29.93                              | 3.11            |
| H70-14 | 31.88                              | 3.12            |
| J70-14 | 33.86                              | 3.27            |
| F70-15 | 29.30                              | 2.88            |
| G70-15 | 30.98                              | 3.24            |
| H70-15 | 32.49                              | 3.34            |
| J70-15 | 33.94                              | 3.40            |
| L70-15 | 35.94                              | 3.47            |

### GLASS BELTED

#### 40,000-MILE GUARANTEE

#### 70 SERIES

Manufactured by one of the world's largest tire makers. Polyester cord + fiberglass belts wide tread, whitewall. Lifetime road hazard, workmanship and materials guarantee. 40,000-mile tread wear guarantee.

| Size   | Replaces | Cash & Carry Warehouse Group Price | Fed. Excise Tax |
|--------|----------|------------------------------------|-----------------|
| A70-13 | (600-13) | 22.51                              | 1.99            |
| E70-14 | (735-14) | 25.92                              | 2.51            |
| F70-14 | (775-14) | 25.97                              | 2.63            |
| G70-14 | (825-14) | 27.85                              | 2.82            |
| G70-15 | (825-15) | 28.84                              | 2.87            |
| H70-15 | (825-15) | 30.92                              | 3.11            |

### HIGH PERFORMANCE-RAISED WHITE LETTER

#### 70 SERIES

Wide look. Durable 4-ply construction with raised white letters. Great traction and handling. Lifetime road hazard, workmanship and materials guarantee.

| Size   | Replaces | Cash & Carry Warehouse Group Price | Fed. Excise Tax |
|--------|----------|------------------------------------|-----------------|
| A70-13 | (600-13) | 20.65                              | 1.95            |
| F70-14 | (775-14) | 24.49                              | 2.59            |
| G70-14 | (825-14) | 25.97                              | 2.75            |
| G70-15 | (825-15) | 26.49                              | 2.84            |

### PREMIUM STEEL RADIALS

#### 50,000-MILE GUARANTEE

#### STEEL RADIAL 70 SERIES

Tough steel belt cushioned between 4 fabric belt plies, plus 2 fabric body plies. Slim line whitewall, manufactured by one of the world's most respected radial tire makers. Lifetime workmanship, road hazard and materials guarantee. 50,000-mile tread wear guarantee.

| Size    | Cash & Carry Warehouse Group Price | Fed. Excise Tax |
|---------|------------------------------------|-----------------|
| BR70-13 | 36.52                              | 2.28            |
| ER70-14 | 38.61                              | 2.79            |
| FR70-14 | 39.96                              | 3.04            |
| GR70-14 | 40.97                              | 3.48            |
| HR70-14 | 42.96                              | 3.47            |
| GR70-15 | 41.88                              | 3.22            |
| HR70-15 | 42.98                              | 3.42            |
| JR70-15 | 44.81                              | 3.62            |
| LR70-15 | 45.94                              | 3.86            |

### 45,000-MILE GUARANTEE

#### PREMIUM FABRIC RADIAL

#### 70 SERIES

Premium 2 + 4 construction. Wide foot print. Slim line whitewall, manufactured by one of the world's most respected radial tire makers. Lifetime workmanship, road hazard and materials guarantee. 45,000-mile tread wear guarantee.

| Size    | Cash & Carry Warehouse Group Price | Fed. Excise Tax |
|---------|------------------------------------|-----------------|
| ER70-14 | 32.90                              | 2.67            |
| FR70-14 | 33.65                              | 2.85            |
| GR70-14 | 34.98                              | 3.07            |
| HR70-14 | 36.97                              | 3.29            |
| GR70-15 | 35.89                              | 3.09            |
| HR70-15 | 37.94                              | 3.42            |
| LR70-15 | 39.96                              | 3.64            |

### COMPACT RADIALS

#### 45,000-MILE GUARANTEE

#### PREMIUM FABRIC RADIALS

Tubeless blackwalls manufactured by one of the world's most respected radial tire makers. Lifetime road hazard, workmanship and materials guarantee. 45,000-mile tread wear guarantee.

| Size        | Cash & Carry Warehouse Group Price | Fed. Excise Tax |
|-------------|------------------------------------|-----------------|
| 155SR 12    | 25.69                              | 1.31            |
| 145SR 13    | 24.68                              | 1.34            |
| 155SR 13    | 25.84                              | 1.46            |
| 165SR 13    | 26.97                              | 1.68            |
| 175SR 13    | 28.89                              | 1.73            |
| 155SR 14    | 28.66                              | 1.54            |
| 165SR 14    | 30.72                              | 1.78            |
| 175SR 14    | 32.91                              | 1.89            |
| 185SR 14    | 36.87                              | 2.03            |
| 155SR 15    | 27.79                              | 1.61            |
| 165SR 15    | 29.93                              | 1.87            |
| 185/70 HR15 | 34.96                              | 2.41            |

### 55,000-MILE GUARANTEE

#### STEEL RADIALS

Tubeless blackwalls manufactured by one of the world's most respected radial tire makers. Lifetime road hazard, workmanship and materials guarantee. 55,000-mile tread wear guarantee.

| Size      | Cash & Carry Warehouse Group Price | Fed. Excise Tax |
|-----------|------------------------------------|-----------------|
| 145SR 13  | 28.90                              | 1.40            |
| 155SR 13  | 29.55                              | 1.47            |
| 165SR 13  | 32.42                              | 1.68            |
| 175SR 13  | 34.96                              | 1.84            |
| 165SR 14  | 36.62                              | 1.78            |
| 175SR 14  | 38.82                              | 1.98            |
| 185SR 14  | 40.41                              | 2.19            |
| 155SR 15  | 34.96                              | 1.64            |
| 165SR 15  | 35.96                              | 1.87            |
| 175/70-13 | 33.81                              | 1.64            |
| 185/70-13 | 35.61                              | 1.84            |
| 185/70-14 | 37.96                              | 1.94            |

### SUPER WIDE 60

Raised white letters. Manufactured by one of the world's largest tire makers. Lifetime road hazard, workmanship and materials guarantee.

| Size   | Replaces | Cash & Carry Warehouse Group Price | Fed. Excise Tax |
|--------|----------|------------------------------------|-----------------|
| A60-13 | (600-13) | 23.51                              | 2.09            |
| F60-14 | (775-14) | 28.41                              | 2.86            |
| G60-14 | (825-14) | 29.74                              | 2.99            |
| L60-14 | (885-14) | 36.59                              | 3.49            |
| G60-15 | (825-15) | 29.94                              | 3.03            |
| L60-15 | (915-15) | 36.94                              | 3.57            |

### 55,000-MILE GUARANTEE

#### STEEL RADIAL 78 SERIES

2 strong belts of steel and 2 polyester cord belts for superb handling, great traction, long mileage and fuel economy. Lifetime road hazard, workmanship and materials guarantee. 55,000-mile tread wear guarantee.

| Size    | Cash & Carry Warehouse Group Price | Fed. Excise Tax |
|---------|------------------------------------|-----------------|
| FR78-14 | 41.91                              | 2.81            |
| GR78-14 | 42.89                              | 2.95            |
| HR78-14 | 43.98                              | 3.15            |
| GR78-15 | 43.89                              | 3.05            |
| HR78-15 | 44.94                              | 3.26            |
| JR78-15 | 45.96                              | 3.44            |
| LR78-15 | 46.97                              | 3.60            |

### 4-PLY

#### 30,000-MILE GUARANTEE

#### 78 SERIES POLYESTER

Full 4-ply, whitewall. Manufactured by one of the world's largest tire makers. Lifetime road hazard, workmanship and materials guarantee. 30,000-mile tread wear guarantee.

| Size    | Cash & Carry Warehouse Group Price | Fed. Excise Tax |
|---------|------------------------------------|-----------------|
| A78-13* | 15.77                              | 1.80            |
| C78-13  | 18.71                              | 1.99            |
| B78-14* | 17.89                              | 1.97            |
| C78-14  | 19.83                              | 2.07            |
| E78-14  | 20.56                              | 2.24            |
| F78-14  | 21.92                              | 2.41            |
| G78-14  | 22.51                              | 2.55            |
| H78-14  | 23.59                              | 2.77            |
| C78-15  | 20.83                              | 2.02            |
| F78-15  | 21.87                              | 2.42            |
| G78-15  | 22.74                              | 2.63            |
| H78-15  | 23.99                              | 2.82            |
| J78-15  | 24.99                              | 2.99            |
| L78-15  | 25.99                              | 3.13            |

\*4 Ply Nylon/Rayon

### 4-PLY COMPACT

#### 30,000-MILE GUARANTEE

#### TUBELESS

Tubeless blackwalls and whitewalls. Lifetime road hazard, workmanship and materials guarantee. 30,000-mile tread wear guarantee.

| Size              | Cash & Carry Warehouse Group Price | Fed. Excise Tax |
|-------------------|------------------------------------|-----------------|
| 600-12            | 13.90                              | 1.45            |
| 520-13            | 13.90                              | 1.36            |
| 560-13            | 13.90                              | 1.45            |
| 600-13            | 13.90                              | 1.61            |
| 650-13 white only | 16.90                              | 1.78            |
| 560-14            | 13.90                              | 1.53            |
| 560-15            | 13.90                              | 1.74            |
| 600-15            | 14.90                              | 1.82            |

\*Add \$1.50 for whitewalls

### TRUCK/CAMPER

#### 78 SERIES

#### BELTED TUBELESS TRUCK TIRES

Wide foot print for positive handling and road stability. 4 nylon cord body plies with 2 strong nylon cord belts for strength and stabilize tread for positive traction and long mileage. An economical replacement tire that fits most campers, vans and pick-ups. No added expenditure for special wheel or rim. Available in Highway Design and Traction Design.

| Size   | Ply | Hwy. Design | Fed. Excise Tax | Traction Design | Fed. Excise Tax |
|--------|-----|-------------|-----------------|-----------------|-----------------|
| H78-15 | 6   | 31.52       | 3.43            | 32.99           | 3.61            |
| H78-15 | 8   | 33.76       | 3.80            | 35.96           | 3.70            |
| L78-16 | 8   | 37.81       | 4.09            | 39.84           | 4.13            |

### COMMERCIAL HIGHWAY TRUCK

#### Nylon Cord — Tube Type

| Size   | Cash & Carry Warehouse Group Price | Fed. Excise Tax |      |
|--------|------------------------------------|-----------------|------|
| 670-15 | 6                                  | 20.90           | 2.36 |
| 700-15 | 6                                  | 23.94           | 2.77 |
| 700-15 | 8                                  | 27.90           | 3.00 |
| 600-16 | 6                                  | 19.94           | 2.27 |
| 650-16 | 6                                  | 22.68           | 3.52 |
| 700-16 | 6                                  | 25.52           | 2.88 |
| 750-16 | 8                                  | 31.90           | 3.60 |

### CAMPER — DUPLEX TYPE

#### Nylon Cord, Tubeless Highway

| Size     | Cash & Carry Warehouse Group Price | Fed. Excise Tax |      |
|----------|------------------------------------|-----------------|------|
| 800-16.5 | 6                                  | 32.55           | 3.25 |
| 800-16.5 | 8                                  | 36.94           | 3.48 |
| 875-16.5 | 8                                  | 39.97           | 4.03 |
| 950-16.5 | 8                                  | 44.94           | 4.56 |
| 10-16.5  | 6                                  | 42.81           | 4.29 |
| 10-16.5  | 8                                  | 45.91           | 4.61 |
| 12-16.5  | 8                                  | 55.76           | 5.74 |
| 12-16.5  | 10                                 | 61.91           | 6.09 |

### SHOCK ABSORBERS

MADE BY ONE OF THE WORLD'S LARGEST SHOCK ABSORBER MANUFACTURERS

- **STANDARD DUTY** . . . Exceeds original equipment quality — 24,000-mile or 24-month guarantee — \$3.95 each — 4 for \$15.00.
- **HEAVY DUTY** . . . Lifetime guarantee — as long as you own your car. \$6.40 each — 4 for \$23.00.
- **EXTRA HEAVY DUTY** . . . Lifetime guarantee — as long as you own your car. \$7.90 each — 4 for \$29.00. Beyond compare for special or heavy duty service.
- **ROADMASTER LEVELING UNIT FOR OVERLOADS** — Front and rear — Lifetime guarantee — as long as you own your car — \$12.75 each.
- **AIR SHOCKS** . . . Lifetime guarantee — as long as you own your car. \$38.95, including kit.

### BATTERIES

Made By The World's Largest Battery Manufacturer

- **CAPITOL HEAVY DUTY†**  
42-Month Service Guarantee  
Sizes fit most 12-volt U.S. and Foreign cars.  
22F, 29MF . . . . . 17.90  
24, 24F, 53 . . . . . 18.90  
42 VW . . . . . 19.90
- **CAPITOL SUPER HEAVY DUTY†**  
60-Month Service Guarantee  
For cars loaded with high-drain extras.  
22F, 24, 24F . . . . . 21.85  
27, 27F, 60 . . . . . 23.70  
72, 74 - Sidemount . . . . . 21.85  
77 - Sidemount . . . . . 23.70
- **CAPITOL 6-VOLT HEAVY DUTY†**  
36-Month Service Guarantee  
1L . . . . . 14.65  
19L VW . . . . . 15.65

†No Trade Required.

### IMMEDIATE REPLACEMENT BATTERY GUARANTEE

If battery is found defective and will not hold a charge:

- (1) FREE replacement within 90 days of purchase.
- (2) After 90 days, CAPITOL will replace battery, charging a pro-rata amount based on the original purchase price and the number of months used.

EXAMPLE: If a 42-month battery, costing \$17.90, fails in 21 months, you get a new battery for \$8.95.

(Applies to original owner and car used in normal passenger car service only.)  
All batteries must be returned to a Capitol Warehouse for adjustment.

### CAMPER — DUPLEX TYPE

#### Nylon Cord, Tubeless Mud & Snow

| Size     | Cash & Carry Warehouse Group Price | Fed. Excise Tax |      |
|----------|------------------------------------|-----------------|------|
| 800-16.5 | 6                                  | 34.96           | 3.44 |
| 800-16.5 | 8                                  | 38.97           | 3.72 |
| 875-16.5 | 8                                  | 42.70           | 4.30 |
| 950-16.5 | 8                                  | 46.92           | 4.62 |
| 10-16.5  | 6                                  | 44.87           | 4.53 |
| 10-16.5  | 8                                  | 48.90           | 4.87 |
| 12-16.5  | 8                                  | 58.98           | 6.12 |
| 12-16.5  | 10                                 | 65.94           | 6.46 |

### STEEL CAMPER WHEELS

Available in a Complete Range of Bolt Patterns. Super Single and Duplex.

### CAPITOL'S EXCLUSIVE TIRE GUARANTEE

Three separate guarantees, honored at all Capitol warehouses, completely protect your tire investment.

- **TREAD WEAR GUARANTEE** . . . PRORATED ON THE BASIS OF GUARANTEED MILEAGE, WITH NO TIME LIMIT. Capitol guarantees that should the original purchaser not receive the mileage guaranteed, Capitol will give credit on a new tire, prorated on the basis of mileage, based on the original purchase price, not including federal, state, or local taxes. EXAMPLE: If a \$20.00 tire with a 30,000-mile guarantee wears smooth at 15,000 miles, the cost of a new tire is \$10.00, plus federal, state and local taxes. (Applies only to car on which tires were originally mounted.)
- **WORKMANSHIP AND MATERIALS GUARANTEE** . . . PRORATED ON THE BASIS OF TREAD DEPTH. Any tire sold by Capitol that fails due to defects in workmanship or material during the first 25% of tread depth will be replaced free of charge. Failures beyond 25% of tread depth will be replaced on the basis of remaining tread depth, prorated on the original purchase price, not including federal, state or local taxes.
- **ROAD HAZARD GUARANTEE** . . . PRORATED ON THE BASIS OF TREAD DEPTH. (Does not apply to truck or commercial tires.) Any passenger tire that fails due to road hazards will be replaced on the basis of tread depth, prorated on the original purchase price, not including federal, state or local taxes. Repairable punctures and tires that have been run flat are not included.
- **FURTHER GUARANTEE INFORMATION**  
The three guarantees above are completely separate and parts of one will not be interchanged with another. These guarantees cover tires used in normal passenger car service by original purchaser only, but do not cover: mileage on front wheel drive vehicles, pickup trucks, campers, special type vehicles, buses or travel trailers, tires run flat, tires used in any form of racing, including drag strips, tires damaged by willful abuse, fire, collision, mechanical defects on vehicles, theft, or passenger tires used in commercial service on trucks or taxicabs. Defective tires must be returned to any Capitol Tire Sales/Warehouse for adjustment under these exclusive guarantees. (Apply only to car on which tires were originally mounted.)

Capitol's tread wear guarantee is predicated on proper wheel alignment and normal driving conditions at normal speeds. Correct inflation pressures, frequent rotation of tires and general good vehicle maintenance will assist in achieving greater tire mileage, and promote safety in driving.

Excessive speed, overloading, fast starts, and quick stops adversely affect tire mileage. Safe driving habits promote longer tire life — as well as your own.

### SPECIAL SERVICE INDUSTRIAL

#### INDUSTRIAL BOAT TRAILER Nylon

| Size       | Ply          | Cash & Carry Warehouse Group Price | Fed. Excise Tax |
|------------|--------------|------------------------------------|-----------------|
| 400/480-8  | 4            | 7.69                               | .52             |
| 400/480-8  | 4 (tubeless) | 9.89                               | .63             |
| 400/480-12 | 4            | 10.88                              | .77             |
| 400/480-12 | 4 (tubeless) | 12.87                              | .90             |
| 570/500-8  | 6 (tubeless) | 12.94                              | .96             |
| 530/450-12 | 4            | 12.67                              | .88             |
| 530/450-12 | 4 (tubeless) | 13.96                              | 1.60            |

#### LIMOUSINE - AMBULANCE

#### Heavy Duty Whitewall, Nylon Cord

| Size              | Cash & Carry Warehouse Group Price | Fed. Excise Tax |      |
|-------------------|------------------------------------|-----------------|------|
| 890-15 Highway    | 8                                  | 37.95           | 3.77 |
| 890-15 Mud & Snow | 8                                  | 39.95           | 3.77 |

### STATEMENT OF QUALITY

All tires shown in this confidential price schedule are premium\* and first line quality only. (Absolutely no seconds, blends, used tires, retreads, or recaps are sold.) All tires in the Capitol warehouses are from factories of the best known and most respected manufacturers in the industry and are manufactured under the most rigid quality controls. See U. S. Govt. required Coding System and Tire Guide Reference Book at your Capitol Warehouse. Ask to see the maker's identifying code mark on the tire.



**HOUSTON 77018**  
2523 Fairway Park Drive  
(713) 688-7455

- #### CAPITOL WAREHOUSE LOCATIONS\*
- |                                                                                                                                                                                                                                                                                                                                                                                                                                        |                                                                                                                                                                                                                                                                                                                                                                                                                                                                                |                                                                                                                                                                                         |
|----------------------------------------------------------------------------------------------------------------------------------------------------------------------------------------------------------------------------------------------------------------------------------------------------------------------------------------------------------------------------------------------------------------------------------------|--------------------------------------------------------------------------------------------------------------------------------------------------------------------------------------------------------------------------------------------------------------------------------------------------------------------------------------------------------------------------------------------------------------------------------------------------------------------------------|-----------------------------------------------------------------------------------------------------------------------------------------------------------------------------------------|
| <b>CALIFORNIA</b><br>ANAHEIM (92806)<br>2020-A E. Howell Ave.<br>(714) 639-9440<br>RIALTO (92376)<br>484 W. Valley Blvd.<br>(714) 877-3421<br>SAN JOSE (95112)<br>1760 Rogers Ave.<br>(408) 287-9112<br><b>OREGON</b><br>EUGENE (97402)<br>909 Garfield St.<br>(503) 342-7601<br><b>COLORADO</b><br>COLORADO SPRINGS (80907)<br>3116 Karen Place<br>(303) 632-3525<br><b>TEXAS</b><br>AUSTIN (78704)<br>615 S. Lamar<br>(512) 444-6524 | <b>ARTESIA (90701)</b><br>17115 S. Alburis Ave.<br>(213) 924-3351<br><b>SACRAMENTO (95814)</b><br>1831 Second St. (at S)<br>(916) 443-2526<br><b>SAN LEANDRO (94577)</b><br>2059 Williams St.<br>(415) 351-8434<br><b>PORTLAND</b><br>3365 S.E. 17th Ave.<br>(503) 233-2431<br><b>DENVER (80202)</b><br>1670 Platte St.<br>(303) 455-2061<br><b>FORT WORTH (76118)</b><br>7341-A Dogwood Pk.<br>(817) 284-4881<br><b>DALLAS (75247)</b><br>3170 Irving Blvd.<br>(214) 686-7455 | <b>GLENDALE (90039)</b><br>4623 Brazil St.<br>(213) 240-4350<br><b>SAN DIEGO (92110)</b><br>5433 Gaines St.<br>(714) 291-9150<br><b>SAN MATEO (94403)</b><br>4220 Olympic Ave.<br>(415) |
|----------------------------------------------------------------------------------------------------------------------------------------------------------------------------------------------------------------------------------------------------------------------------------------------------------------------------------------------------------------------------------------------------------------------------------------|--------------------------------------------------------------------------------------------------------------------------------------------------------------------------------------------------------------------------------------------------------------------------------------------------------------------------------------------------------------------------------------------------------------------------------------------------------------------------------|-----------------------------------------------------------------------------------------------------------------------------------------------------------------------------------------|

# Photo show captures pulse of life

By ELIZABETH ASHTON  
Cougar Staff

Situate yourself in time and space. Think like a camera. Snap. Snap. . . A brief moment in infinity is jelled on celluloid.

"The decisive moment," photographer Henri Cartier-Bresson calls it. The moment when time stands still, lips formed in a smile, blood flowing, eyes reflecting the pain, joy or ennui of the pulse life, the moment never to be recaptured.

Three hundred and eighty five such moments are caught forever in a major photographic exhibit, covering approximately 45 years of the French photographer's work, commissioned by the Menil Foundation and now on display at Rice University's Institute for the Arts.

Cartier-Bresson considers this archival collection a testament of his life's work, but at age 66 the genius is still flowering, evolving.

## Fans, stars meet

## for nostalgia fest

Houstoncon '74 is a nostalgia buff's dream.

The films, the stars and the comic books of another era will be on display today through Sunday at the Sheraton Lincoln Hotel.

Kirk Alyn alias Superman and Blackhawk, Jock Mahoney of television's "Ranger Rider" and "Yancey Derringer" fame, and William Benedict, former "East Side Kid" and "Bowery Boy," will be among the stars of yesteryear and will discuss their feats of daring with the public.

Comic artist Dan Adkins of Submariner fame and Fred Fredericks, the artist of "Mandrake, the Magician," "Mighty Mouse" and "Rocky and Bullwinkle" will be among the masters of the pen to appear.

The artist can never be finished.

See the unfinished life's work. Stand in the cool of the Rice Museum. Move past the inexplicably bored, gum-chewing female guard. Move in time and space from the hot baked sun or Thebes, Spanish Morocco, the Euphrates, to the frozen desolation of Siberia, the coal-thick air of Liverpool, the quality of the light subtly different, pulling you into the print to search out the life prisoned there.

Cartier-Bresson, considered the dean of 35mm photography, selected and grouped these images over a two-year period, poured over thousands of contact sheets to assemble a "visual order within a geographic framework."

India, Asia, Spain, Ireland, Mexico, USSR read the museum captions, crossing the limits of time and content.

Two prostitutes, staring with painted invitation, share the wall with a black-gauze wrapped madonna and child of the streets, the woman bloodless and drawn, the child a soft protoplasm bound to its mother by the dark net. . . Mexico City, 1934.

Across the room, two men in fur hats, twin images, each with baby carriage and newspaper, step through Moscow, Sunday, 1973.

Cartier-Bresson considers himself a photojournalist, but he is much more than that. His pictures are a celebration and a statement of life that goes far beyond traditional journalism. No words are needed, no journalistic cutlines.

A beggar child—soft stubs replacing hands and feet—lies in the bright heat of a Calcutta alley-

## Coca begins play

King Donovan and Imogene Coca, husband and wife comedy team, will headline the cast of "The Prisoner of Second Avenue" at the Windmill Dinner Theatre. The Neil Simon comedy is scheduled to run today through July 21.

Coca, primarily a comedy actress, has appeared in "Under the Yum Yum Tree" and "Ten From Your Show of Shows."

way. A monkey, wired to a monster machine—progress for science, Berkeley, Calif.—stares with eyes one step past terror. The moment, the moment, the decisive moment.

Captured at that moment, by Cartier-Bresson's camera, are the great of arts and letters, portraits lined precisely on the museum

wall. Colette, Samuel Beckett, Genet, Matisse. . . and a startling 1946 portrait of the young Truman Capote—a beautiful, intense-eyed boy, full-lipped and brooding in a jungle of magnolia leaves.

None of these prints have been cropped. They are that moment, framed in the camera's eye, complete.

Cartier-Bresson has said: "The picture is good or bad from the moment it was caught in the camera. Cropping will not save a bad picture, because a picture is made by situating oneself in time and space. A mistake made then is irreparable. If you bend slightly forward, backward, to the right, to the left—*la petite difference.*"



HOBOKEN, N.J. 1947 as seen through the eyes of Cartier-Bresson. The Cartier-

Bresson exhibit is currently on display at Rice University's Institute for the Arts.

Foreign Newspapers - Out of State Papers

## BELLAIRE NEWSTAND

4,000 Foreign & Domestic Magazines, Paperbacks & Newspapers to choose from!

Open 24 Hours

5807 Bellaire Blvd. 665-9081  
Near Chimney Rock and Hillcroft

## BEAN BAG CHAIRS

3 sizes, 9 colors  
small size \$16.95  
Adult size \$23.95  
US Manufacturing  
119 Gray 223-4171

"The Best Comedy of All Time"  
International Film Critics' Poll

## CHARLIE CHAPLIN'S THE GOLD RUSH



with special musical score and narration  
by Charles Chaplin

and

For the first time in 50 years

## PAY DAY


with Charlie and Sydney Chaplin

Tuesday, June 25 AH 2

8:00, 8:30 & 10:00

\$1 Students

an rbc films presentation



**THE UNIVERSITY CENTER TICKET OFFICE IS OPEN THIS SUMMER WITH GREAT AMERICAN DISCOUNTS TO STUDENTS, FACULTY AND STAFF**

**COME BY & SAVE ON TICKETS TO:**

- ◆ ASTROWORLD
- ◆ SIX FLAGS
- ◆ ASTROS Baseball
- ◆ INTERSTATE theatres
- ◆ RINGLING & CIRCUS

**WE'RE LOCATED IN THE NEW UC UNDERGROUND EXPANSION. COME DOWN AND SEE US OR CALL 749-1261 FOR A BIT MORE INFO, WE'RE OPEN 10-4 MONDAY THRU FRIDAY.**

# 'Godspell' bombards receptive audience

By JILL LEFFORGE  
Cougar Staff

Of the many positive things that struck me about Reunion Theater's current production of "Godspell," one that practically jumped out and grabbed me by the collar was the sheer strength and vitality of the cast.

Things like stamina are usually described on the sports page but this production is so packed with it that it oozes into the audience. That feeling of being in the excluded theatre population, the audience, is gone. But if you're not one of those who enjoys that type of thing, you can still be a detached observer and enjoy yourself.

"Godspell" is a sort of theatrical descendant of "Hair," however, they do not cover the same material. "Godspell" is

billed as a "musical based on the Gospel according to St. Matthew", and it is not preachy. It is a good-time rollicking show with fun songs and 11 people who put out more energy than any football team in town. (Sounds like PR for the Glen Campbell Goodtime Hour, right?)

Little things like inaudible lyrics and self-conscious stage movement are at a minimal. Although I have to admit their presence, they are overwhelmed by enthusiasm and driven into the woodwork.

The rummage sale setting is quite a comment on things, then and now. The cast just starts walking on stage, buzzing around, talking among themselves, and addressing each other by their real names. Then it just starts. When the time comes, each member has the spotlight in which he or she sings and dances his or

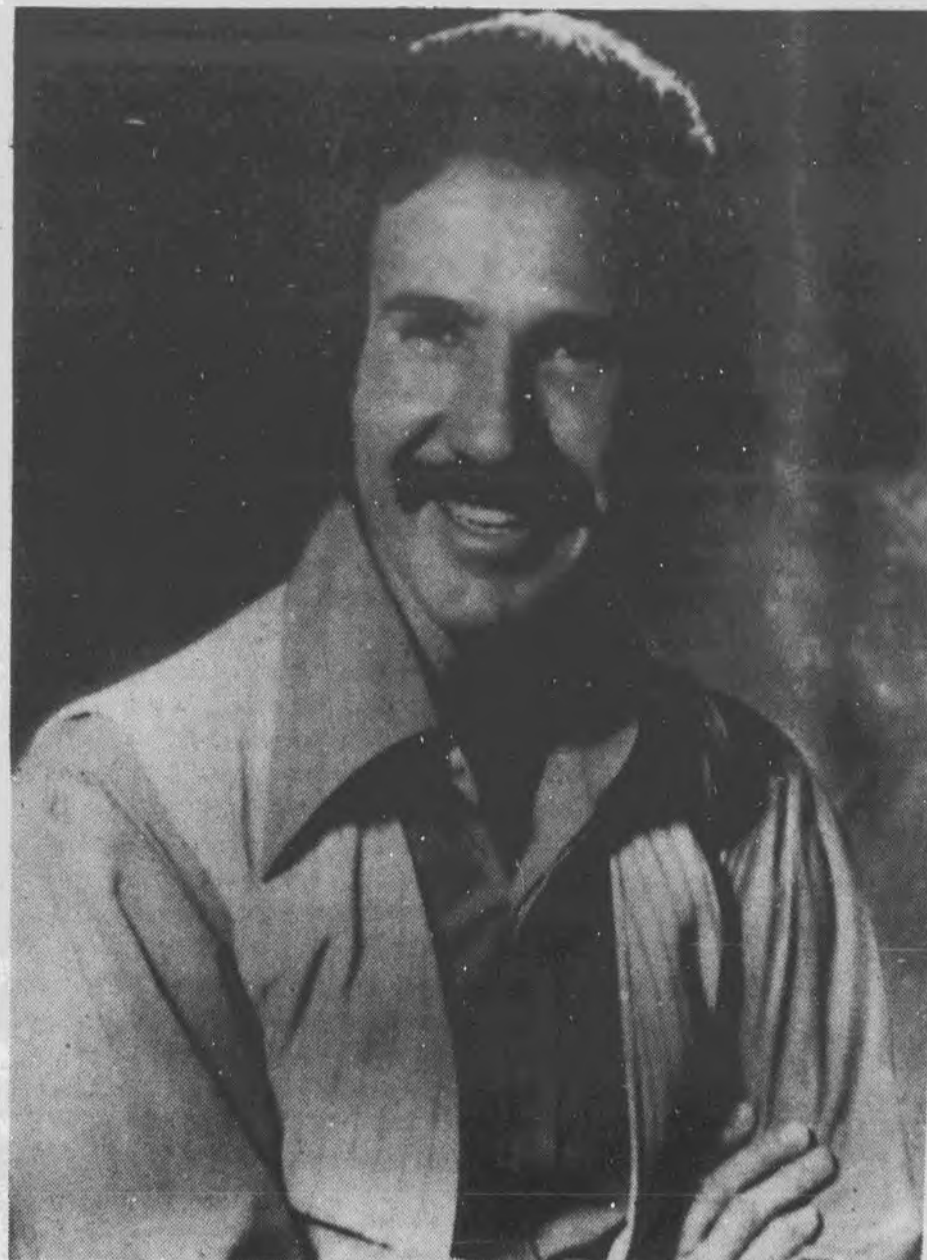
her way through a parable, and the whole cast assists.

It looks very unstructured, but the more that is said and sung, the more one knows that we are watching a very intricately staged production by director Gary L. Callaway. It is to his credit that we see a smoothly performed musical instead of the inconsistent mish-mosh of "Godspell's" ancestors of the stage.

To single out a cast member would be unfair. All of them, collectively and otherwise, give a non-stop endurance test of their talents and we are never short-changed.

If you are one of those who are wary of musicals, because every other line is sung, "Godspell" has enough dialogue to keep you happy, but still will please the music lovers.

Reunion Theater is celebrating its first anniversary in Houston with this production and with it proves that a blend of talent and avant-garde chances please Houston audiences more than just the good ole stand-bys.



**COUNTRY SINGER** Marty Robbins will appear in concert at 8:30 p.m. June 21 and 22 at the Houston Music Theatre. Robbins has recorded many country classics, from "El Paso," to "The Hanging Tree."

## Muldaur belts rock, blues during concert

By LINDA STELLJES  
Cougar Staff

Maria Muldaur strutted onto the stage of the Music Hall Sunday night, banging on her tambourine and looking somewhat like a cross between a gypsy vamp and a ragin' cajun. She then proceeded to belt out a mixture of rock and blues with a definite down-home country flair.

She opened her act with a couple of songs about the deep-southern towns of Mississippi and New Orleans. Plucking her violin, Maria staged a hoe-down as she commenced to playing the Dolly Parton song, "My Tennessee Mountain Home." Skirt swishing, hand clapping, leg slapping and footstomping helped to enhance the rhythm.

Joan Baez and Janis Joplin are brought to mind while listening to Maria's voice. Maria possesses the vibrating folk sound of Baez and the frantic wailing of Joplin. However, Maria has created her own style by adding a honky-tonk, beer joint style to her sometimes raspy voice.

Maria does not limit herself to country rock and blues. Maria

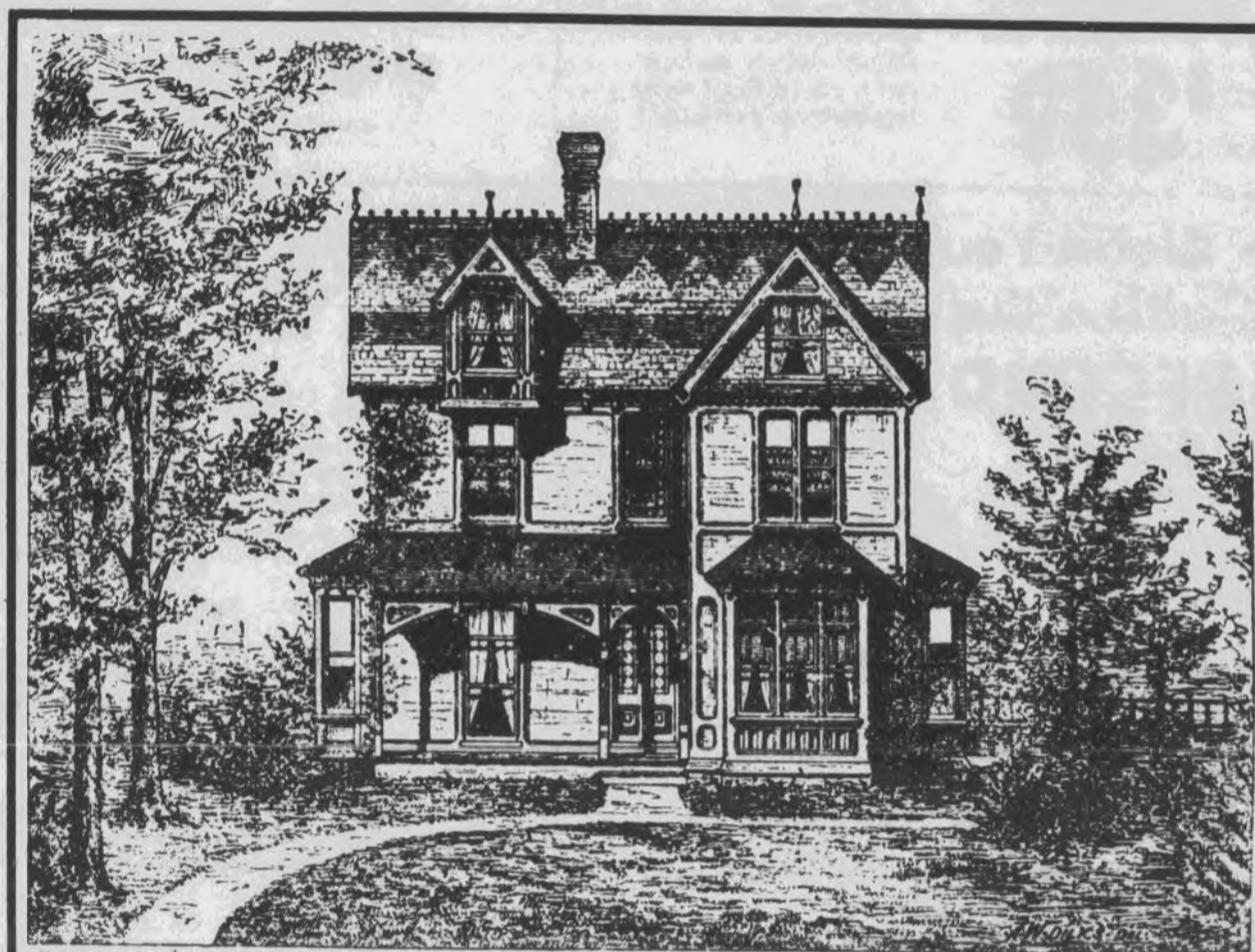
sang a love song, "Lover Man, Where Are You?," borrowed from the days of Billie Holiday. And, without the accompaniment of her back-up band, Maria revived Ethel Waters' gospel style with an Appalachian hymn titled "Guide Me Jehovah."

Maria's versatility in the selection of songs and her unique voice quality have won her the admiration of many people of varied musical tastes.

Opening the bill was Danny O'Keefe, who as a last minute substitute for Bruce Springsteen, sparked the country mood with his easy flowing guitar style. He did an adequate job of his renditions of songs by Jimmie Rogers and other writers. However, his best pickin' came across on his own songs such as the footstomping tune "Steel Guitar" and "Everybody's Leaving Town (Good Time Charlie Got the Blues)."

### Russ to appear

Texas Reefer Russ will appear at the UH Coffeehouse at 8 p.m. Friday. The UH Coffeehouse features live music every Friday.



## JOIN IN KPFT'S MARATHON HOUSE-RAISING

On FM 90

HELP RADIO FREE 90 FIND A NEW HOME



Downtown is no place for a down home radio station. As the old buildings around our little rented studio topple and skyscrapers shoot up on all sides, we begin to feel a bit apprehensive. We need a nice, quiet place of our own. And your tax-deductible contributions can help us put down roots. Tune in FM 90 for the details, and see if you don't agree.

We'll be listening for your call at 224-4000.

## BRISKET HOUSE NEEDS

### Waitresses/Waiters

5 PM till 10 PM shift  
4 days per week

Will train • Apply in person only  
No phone calls please

1217 Pierce, near St. Joseph Hospital

## BEER BUST TONIGHT!

Thursday Only 8-12 PM

All the Beer You Can Drink-\$2.50 P.P.

### Monday Special "Bring a Friend Day" Sale

2 for 1 Hamburgers-1/2lb of Beef only \$1.50

HAPPY HOUR EVERY DAY, 3-6 PM DRINKS \$.60—CALL \$.75  
FOOSBALL TOURNAMENTS—PRIZES & CASH—COMING SOON

POOL, 22 FT. LONG SHUFFLEBOARD, AIR HOCKEY, AMERICAN FOOSBALL MACHINES

### Price List:

|                   |       |
|-------------------|-------|
| BEER              | \$.50 |
| BAR DRINKS        | .85   |
| CALL              | 1.00  |
| FANCY             | 1.25  |
| 1/2 LB. HAMBURGER | 1.50  |
| GIANT HOT DOG     | 1.75  |

**COUGAR'S**  
4101 DENNIS AT CULLEN  
**CORNER**  
748-9076

# CUSTOM HI-FI DISCOUNT CENTER

Houston's Largest Discount Center

## Inventory Clearance SALE

Thurs. 10-8    Fri. 10-6    Sat. 10-6  
 "WE DISCOUNT PRICE, NOT QUALITY!"

25 DAYS LEFT  
 in our Fiscal Year!  
 We Must Move Inventory!  
 THE PRICE WILL BE RIGHT!

### BUDGET PIONEER Stereo System



**\$259**

Can you expect a \$259 sound system to sound good? At the Custom Hi-Fi warehouse clearance you can. You will buy a \$400 system for only \$259. You utilize the Pioneer SX424, the BSR 260 with a Shure cartridge to play records and a E.C.I Super 8 speaker system to top it off. All this and save \$157.65.

### MOST WANTED

### SHURE STEREO CARTRIDGE



**\$20**

with CUSTOM'S LOW PRICE!

Do you have a Garrard, Dual, BSR, Pioneer or an Empire turntable and not getting a full sound? You need the Shure M91ED stereo cartridge.

It lists for \$54.95

### Don't Pass This DUAL Quality RECORD CHANGER



You pay only

**\$149**

Have you been looking for a Dual changer but couldn't afford one Well, during this sale you get the base, dust cover and Shure M91ED cartridge free All you pay for is the deluxe Dual 1216 turntable which lists with base, dust cover and cartridge for \$230.80

### PIONEER Most Wanted Stereo System



**\$359**

The Pioneer SX 525 is rated as one of the best receivers and comes in a package price which is unbeatable. You get a 3-way speaker system which includes 12" woofer, 5" midrange and a 3" tweeter and the BSR 310X.

With all that you would expect to pay \$600, but during the Clearance, you pay ONLY

### STEREO HEADPHONES at Budget Price



During the warehouse clearance you save \$1.95

**\$4**

If you have a sound system that you paid \$50 to \$500 for, this stereo headphone will give you the sound that you can enjoy.

### WALK ROOM-to-ROOM with your headphones!



Do you like to walk around and listen through your headphones?

Now you can (up to 25 feet) and save \$2.95

**\$3**

### Clean Your Record with a Custom Hi-Fi RECORD CLOTH

For dusty records, preserve them with this great record cleaning cloth. Buy as many as you want. You'll never get a better buy.

**29¢**

### Scotch BRAND Best Blank REEL-to-REEL

For reel to reel, the best is Scotch 207 It is a high output tape that gives a great sound with little distortion. During the clearance save \$3.60.

**\$4.50**



### Lightest Headphones with the Best Quality!

Sennheiser has come to the rescue of heavy headphones Light headphones with a heavy sound.

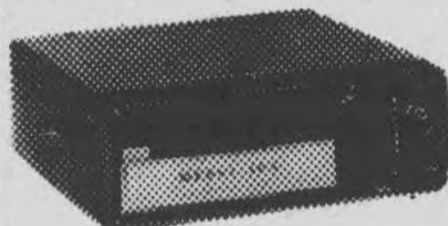
This week you save \$9.95

**\$33**



**SENNHEISER**

### FM SOUND for your car . . .



with the 8-Track

**FREE!**

If you want FM in your car, you can get it and 8 track stereo for one low price during the warehouse inventory sale. During this week you save \$59.95.

This week save \$59.95

**\$60**

DOLBY REEL-to-REEL By

**AKAI**

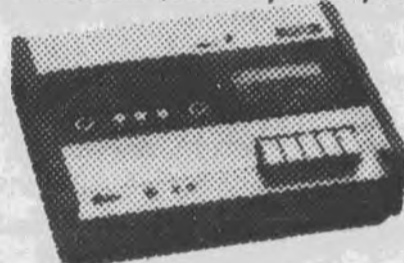


Dolby cassettes are easy to find but Dolby reel to reel are not. AKAI, the innovator in tape recording, brings you a Dolby reel to reel 4000DB for only \$369.95 but during the clearance save \$50.95 off of this price.

**\$319**

### Dolby CASSETTE RECORDER by SUPERSCOPE

Dolby cassette recorders range from \$199.95 to \$499.95. The only problem is supply of 200 Dolby cassette is small. Custom Hi-Fi has the Superscope CD302 and this week save \$30.95 if you hurry in this week.



**\$169**

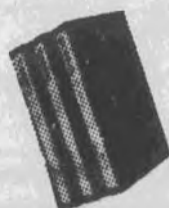
### PIONEER with SOMETHING EXTRA!



**\$459**

Have you been looking for a 100 watt amplifier but always been scared away by the price? Here is a system you can't pass up. The Pioneer SX626 which offers 100 watts, ECI 1253 offering a 12" woofer and a BSR 310X which offers you a full size change. When you come in this week you can save a whopping \$225.85.

### BLANK Scotch BRAND CASSETTES



**\$5**

Buy 3 Scotch C-90 cassettes low noise tapes at a value you won't believe. This week save \$6.97 on 3 C-90 Scotch low noise cassette tapes.

### PIONEER with the Most!



**\$759**

A Pioneer SX838, ECI four-way speaker system and a BSR turntable. A great system with the most in sound. The Pioneer SC838 with 50 watts per changer, ECI speaker with 12" woofer, 5" midrange, 3" tweeter and a 3" super tweeter and the BSR 710X with dampcuing and Shure cartridge. You save this week \$286.80.

LAY AWAY-TERMS AVAILABLE

## CUSTOM HI-FI DISCOUNT CENTER

FINANCING AVAILABLE

**WAREHOUSE**  
 10906  
 S. Post Oak  
 729-5373

**5323 WESLAYAN**  
 in Woolco Center  
 666-0131

**7317 HILLCROFT**  
 772-8383

**4727 CALHOUN**  
 Across from U of H  
 748-6028

**6239 WESTHEIMER**  
 781-0353

# Cougar Classified

## ★ Help Wanted

**STUDENT TRAINEES** part-time. Work experience not necessary. Average \$3.50 plus per hour. We train you as waiters and waitresses. Call 465-8381 for interview appointments. HOUSTON COUNTRY CLUB.

**MACHINE SHOP FOREMAN** Trainee Working Foreman for second shift for small manufacturing firm. 747-8140.

**MACHINE OPERATORS** for second shift. Turret lathe, engine lathe, drill press. 747-8140.

**SALES HELP WANTED.** Full and part-time. Store is located in South-west Houston. Starting salary \$2.50 per hour. Call for appointment, Clute. 666-1406.

**WANTED**—Strong, Responsible, Male attendant for handicapped person during second summer session. Room and board paid plus \$30 month spending money. Inquire after June 25. 666-7653.

**COUNSELOR FEE PAID!** No experience. Salary. 626-5803. Capital Personnel Consultants.

**BSME, BSEE, BSCHEE**—All fees paid. 626-5803. Capital Personnel Consultants.

**ACCOUNTANT-BOOKKEEPER.** Fee Paid! \$1,000. Career. 626-5803. Capital Personnel Consultants.

**NEW GRADS**—Earn \$15K in Petro-Chem. 626-5803. Capital Personnel Consultants.

**FINANCE MAJOR**—Train with money company. Salary! 626-5803. Capital Personnel Consultants.

**COLLEGE GRAD**—No experience, cost estimator. Promote to V.P. 626-5803. Capital Personnel Consultants.

**DRAFTING TRAINEE**—No experience. Earn \$140 weekly. 626-5803. Capital Personnel Consultants.

**CIVIL ENGINEER**—Structural Design. Salary Open! Fee paid. 626-5803. Capital Personnel Consultants.

**SECURITY GUARDS** wanted by nationwide company. Full and part-time. We train. Equipment furnished. Hours flexible. 621-0802.

**NUCLEAR MEDICINE TECHNICIAN** trainee. Full time days. Need chemistry, biology and physics. Dr. Neil, 2000 Crawford, Houston, Texas 77002.

**PRE-PHARMACY** or pharmacy student part-time in prescription shop. Apply 5122 Bissonnet, Bellaire.

## ★ Help Wanted

**DELIVERY PART-TIME,** Bellaire and southwest Houston. Good driving record. Apply 5122 Bissonnet, Bellaire.

**DOORMAN,** \$2.25, Barback, \$2 starting. Evenings, weekdays, hours flexible. Willowcreek Club. Call 645-4211 after 4 p.m.

**PART-TIME SALES.** We offer full time pay for part time help. No door to door. Preset appointments only. Flexible hours. Learn a career in a high paying industry. We train. Call 681-2448.

### Blood Plasma Donors Needed

Earn Cash weekly  
Donate twice each week  
Men and women  
**HOUSTON BLOOD COMPONENTS, INC.**  
4510 Holmes Road  
In King's Center  
9 a.m. to 6:30 p.m.

Monday, Tuesday, Thursday,  
& Friday  
733-3387

**PHONE PERSON**—office helper. \$2.50 per hour plus to start. No experience necessary. Evening hours available. Mr. Kilgore, 664-8101 after 4 p.m.

**WANTED:** Music teacher for the day care center. Once a week. 664-0985.

**NEED EXTRA MONEY?** We need part-time interviewers. Not door-to-door sales work. Must be personable, businesslike, and have transportation. EXCELLENT PAY, NATIONAL CORPORATION. 681-2448 S.W.

**NEEDED** physically strong and dependable student with car to assist handicapped business man to and from work June 17 through 28 and July 8 through 24, 2 hours A.M. and 1 hour P.M. Salary cash plus gas. Mr. Clarke 688-4444 days, 522-1504 nights.

**FRIENDLY NIGHT CLUB** is searching for 12 good looking dancers 18 and up who know how to smile, serve and entertain. Personality counts. If you have a nice figure, have snap, like to dance, but don't know how to turn these qualities into gold, call me and I'll train you and introduce you to a fun job where you can make up to \$500 a week by being sharp. Nice place. Well mannered clientel. Ask for Tony, 523-2302.

**AIRWAYS RENT-A-CAR.** Openings for full or part time at Hobby and

## ★ Help Wanted

Inter Continental. Applicants must be 21 or older. 446-9121.

**PART-TIME.** Hours flexible. Call Houston Canoe Rental, 645-9855 or 645-0693. 3116 Broadway.

**HANDICAPPED STUDENT** requires assistance of a male attendant roommate to live in Moody Towers for the fall and spring. Salary \$200 per month, contact Jim Richbook, 945-4513, Texas City.

**THREE LAB technicians** needed, full or part time, prefer sophomore or junior standing, wkth background in chemistry. Call Richard Miller, Crystal Chemical Company, 686-8401.

**RECYCLING CENTER** needs student on college work study. Flexible hours. \$2 per hour. Greg Skie, 749-1253.

**COUPLE TO MANAGE** small, attractive apartment near campus. Free rent to reliable industrious couple. 664-6011 after 5:30 p.m.

**TYPIST**—Clerical. Part-time. Some experience helpful. Near U of H. Contact Mr. Harrah or Mrs. Coogler. 747-9917. Harrah Control Inc.

**SWENSEN'S ICE CREAM SHOP** (2), a new concept in ice cream parlors, needs fountain help, waiters, waitresses, full-time and part-time. A neat place to work. Apply in person, 12-5 p.m. Westheimer and Gessner (next to Handy Andy). 781-0033.

## ★ Cars for Sale

1973 VW. Factory air, AM-FM radio with 8-track stereo. \$2300. Mr. McAnally 453-2037.

1969 FIAT SPIDER. In excellent mechanical condition. \$450. Call late night or early morn 522-8584.

## ★ Misc. for Sale

**CARPETS—USED.** Good condition. 10' x 12'. \$15 each. Greens and golds. Cash. 926-9026.

**KONICA** Auto Reflex T-2 Camera plus 85MM and 200MM Konica lenses, hotshoe and filters. \$350. 748-7362.

**A.K.C. IRISH SETTERS.** Champion blood line. Six weeks, healthy, beautiful, ready to go! \$100. 861-8295 evenings.

## ★ Services

**HOT-AIR BALLOON PILOT TRAINING.** Introductory ride, \$50. We trained the current national champion. 445-1080.

**CONFIDENTIAL CARE** for pregnant unwed mothers. Edna Gladney Home, 2308 Hemphill, Fort Worth, Texas. (817) 926-3304.

**XEROX COPIES.** Specializing in theses. Excellent quality with special student prices. 526-1117. Instant Reproduction Company, 3511 Milam.

**HAIRCUT \$2.75;** Razor haircut \$3.75; Hairstyles \$5.75. University Center BarberShop. Ext. 1258.

**DORM STUDENTS**—We have the largest refrigerators available at the lowest price. 3 cu. Ft. unit for entire summer, \$18. No deposit. Shelley 749-1253, 923-8393, 785-4036.

## ★ Rides Wanted

**CARPPOOL—RIDE.** Nassau Bay Area to U of H. 333-2041.

## ★ Tutoring

**PRIVATE PIANO LESSONS.** Tutoring, music theory. 926-0941.

## ★ Notices

**APARTMENT** and dormitory renters insurance policy. 626-2776 days. 944-1754 after 6 p.m. Ask for Ron Chapman.

## STUDENTS

Let Us Take the Struggle out of Study  
Learning is easy if you know how. It can be fun! 6 hours with us will give you a clear understanding and confidence in yourself.  
For Information Call  
626-7871 weekdays  
523-0517  
after 5 and on week-ends  
Conner S. Davis  
& Associates  
Student Motivators  
4151 Southwest Fwy.

## ★ Typing

**EXPERIENCED SECRETARY**—all kinds of typing. Call 733-7198.

**DISSERTATIONS,** term papers, math, fast accurate service. Reasonable rates. 682-5440.

**STUDENT PAPERS,** theses typed. 861-3451.

**TYPING**—all subjects. Keyboard—math, engineering, etc. Term, theses, manuscripts. Degrees: Business and English. Call 622-6936, 783-2130.

**TYPING,** all types. Fast, accurate, low student rates. 771-4272.

**EXPERIENCED TYPIST.** Theses, dissertations, term papers. Reasonable rates. 645-9983.

**EXPERIENCED:** dissertations, theses, term papers, manuscripts. Grammatical editing on request. IBM Executive typewriter. Call Mrs. Becker, day or night. 528-3559.

**EXPERIENCED TYPIST.** All kinds of typing. Very near campus. 926-5948.

**TYPING** dissertations, theses, term papers; grammatical editing on request; IBM Executive electric; B.A. English. Call 785-0423.

**TYPING** done in my home. All types. Accurate, reasonable. Southwest Area. 729-7922.

**TWENTY-FOUR YEARS** experience dissertations typing. Two blocks from campus. 748-4220.

**EXPERIENCED TYPIST.** All kinds of typing. On campus. 649-4112 after 6 p.m.

**TWENTY-THREE YEARS** experience in dissertations, theses, briefs, miscellaneous manuscripts. Fast, accurate, reasonable. Near campus. 748-4134.

## ★ Roommates

**ROOMMATE REFERRAL SERVICE:** Apartment Share, Inc., 4215 Graustark, 529-6990.

**FEMALE ROOMMATE** to share apartment. Prefers Sharpstown Area. Call 774-8952, ask for Donna.

**MALE ROOMMATE** over 21. Share house and expenses. Bellaire. J.J. 784-5900 Ext. 245, 665-2092.

**HOME-LOVING** student couple seeks considerate female roommate to share rent and housework in large, quiet, unfurnished Rice Area Duplex, \$55 month plus food and utilities. Ken or Karen 528-1142.

## ★ Room for Rent

**ROOM-BOARD FREE.** Exchange for 4 hours light housework, MT-WTF. Two adults, adolescent boy, River Oaks home. Private quarters. Begin September. 524-4290.

## ★ Apt Furn

**GARAGE APARTMENT** close to U of H—3 minute ride. Air-conditioned.

## ★ Apt Furn

Close to shopping. Prefer school teacher couple. 923-1497.

**FURNISHED APARTMENT** near campus. One-bedroom, air conditioned, carpet, bills paid; \$125 monthly plus deposit. Call after 6 p.m. 649-0946.

**DENNIS 3822.** Third Ward. June Special 10 per cent off weekly rental. Furnished large 2-bedroom, \$25 weekly, bills paid. Also unfurnished. 741-1962.

## ★ Apts. UF

**THREE-ROOM APARTMENT,** very clean, air, near bus and University. Single working student only. Weaver Street at 5100 Polk across from Jackson High School. Bills paid. \$90 month. 926-5569.

**LARGE UNFURNISHED** two bedroom apartment with pool. Ten minutes from U of H. Sublet July and August, with option to stay. 795-0572.

## ★ Apts. F&UF

**1-BEDROOM APARTMENTS.** 3800 block Ruth Street. Walking distance TSU and U of H. Reasonable rates. JA 3-3021.

## ★ House for Rent

**TWO BLOCKS** off Freeway at Crestmont and Mykawa exit on Southridge. 465-4523. Close to Schools.

## ★ Mobile Home

**MOBILE HOME** 1970, 8 x 35, furnished, air-conditioned, 2 beds, excellent condition. Near Astrodome. \$2450. 462-5419.

## ★ Miscellaneous

**OPEN UNIVERSITY** 12-14 hours credit. Independent study. Sciences, Humanities. 749-4169.

**FREE PREGNANCY TESTING**  
771-4336

## ★ UNCLASSIFIED

AKC regd Labrador Pups 661-2919.

**CLASSIFIED RATES:** 10c per word; \$1.50 minimum. Four consecutive issues for price of three.  
**CLASSIFIED DISPLAY:** \$4 per col. inch. Four consecutive issues for price of three.  
**UNCLASSIFIED:** One line, 99c for two issues.  
**DEADLINE:** 10 a.m. day before publication.  
**REFUNDS:** None for partial cancellation of four-time insertions. The Summer Cougar will not be responsible for more than the first incorrect insertion of any advertisement.  
**CALL:** 749-1212.  
**WRITE:** The Summer Cougar, University of Houston, 77004.

NEW MOVIE EVERY TUESDAY

# Houston Mini-Art Theatre

AND ADULT BOOKSTORE  
4403 S. Main 528-9702  
Across from Delman Theatre

2 EXCITING NEW MOVIES

This week only

THE BLUE BALLOON AND LONG LASTING

Must be over 18 Rated XXX

\$2 off Regular Admission with this Coupon

Ladies Free

Open 11 a.m. to 4:30 a.m.

NO HOLDS BARRED - The true story of teenage girls in prison



**PRISON BABIES** SEX BEHIND BARS

TWO SWEDISH GIRLS OUT WEST

THEY WERE READY and WILLING TO TRADE ANYTHING THEY WERE



**THE SWAPPERS** ADULTS  
RED BLUFF DRIVE-IN  
Hwy 225 & Red Bluff Rd.  
PASADENA 472-0181  
OPENS 8:00 STARTS DUSK

# UH to snuff out smog with study

The Air Quality Management Program, conducted by UH's chemical engineering department, will study smog pollution in Houston this summer to find the amount of hydrocarbon pollutants in the air.

The study is open to qualified engineering students, Director of Field Operations of the Air Quality Management Program, Dr. A.A. Siddiqi, said.

Ten engineering seniors or graduate students are still needed to help administer the study, Siddiqi said and funds as well as the possibility of earning three semester hours of credit as an elective are available for participating students.

The study will continue from July 10 through August. It will utilize four air sampling stations

located at UH, downtown Houston, Pasadena and La Porte. The stations will operate on four-day cycles with the data being evaluated between each cycle.

A similar study was conducted last summer for four days. The results were inconclusive, making this summer's longer study necessary, Siddiqi said.

In addition to evaluating the Houston atmosphere for hydrocarbon content the study will also check for amounts of poly vinyl chloride (PVC), using a technique developed by Siddiqi which will determine PVC content in an air sample to the number of parts per billion within two minutes.


Students interested in participating in this summer's study should call 749-1121.



**IN NEW SURROUNDINGS,** Orientation Director Jocelyn Gilkey assists a student in summer orientation programs. The

department has moved from the Student Life Building to the UC Annex.

ED LAWRENCE—Cougar Staff



**the INDUSTRIAL State BANK OF HOUSTON**  
WAYSIDE DR. AT CAPITOL AVE.

|                                                                                                                                                                                                        |                                                                                      |
|--------------------------------------------------------------------------------------------------------------------------------------------------------------------------------------------------------|--------------------------------------------------------------------------------------|
| <p><b>Banking hours-</b> 9 a.m.-2 p.m. Mon. thru Thurs.<br/>9 a.m.-6 p.m. Friday</p> <p><b>Drive-in windows</b> 8 a.m.-5 p.m. Mon. thru Thurs.<br/>8 a.m.-6 p.m. Friday<br/>8 a.m.-1 p.m. Saturday</p> | <p><i>If it's a matter of money—let us serve you</i><br/><b>Se Habla Espanol</b></p> |
|--------------------------------------------------------------------------------------------------------------------------------------------------------------------------------------------------------|--------------------------------------------------------------------------------------|

MEMBER FDIC

## NSA meets

The National Student Association is holding its annual congress in St. Louis from August 18 through 24.

The congress will provide background material and contacts to help in dealing with today's issues in higher education. Topics to be discussed are women's and minority rights, collective bargaining, student lobbying, tenure, educational innovation and academic governance.

The College Press Service has also cooperated with NSA in providing workshops on the legal rights and responsibilities of college publications.



# CASA INTERNACIONAL

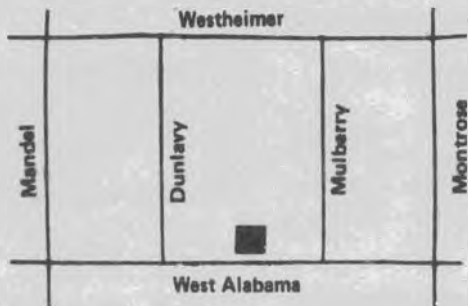
A wide selection of plain and embroidered hand made clothing—Wedding Shirts, Huaraches, Halters, Summer Clothing and Maxi Dresses from Mexico, Central and South America and the Far East. We also have jewelry, hand bags and many novelties and decorative items.

Open 10 a.m. to 5:30 p.m.  
4614 Montrose Blvd. 527-8504

10 PER CENT DISCOUNT WITH U. OF H. ID

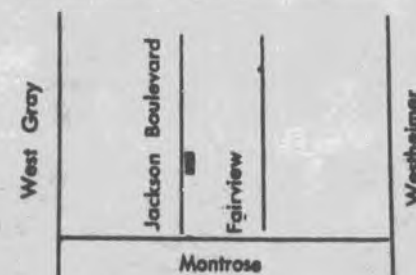
## GRAND CENTRAL

1512 West Alabama



Open 7 Nights  
The Best  
of Live Entertainment at  
**GRAND CENTRAL**

## Carnaby's



Take Westheimer toward town - take a left on Montrose then take the first right after the light at Fairview - 3 houses off Montrose.

Open 7 Nights

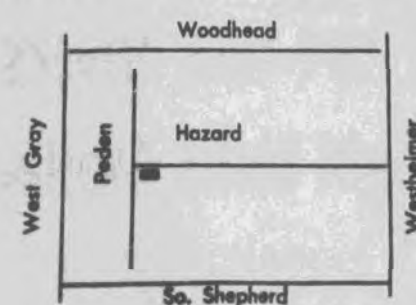
1003 Jackson Blvd.

**NEVER A COVER - FEATURING LIVE ENTERTAINMENT**

## DAMIAN'S

1502 Hazard

**FEATURING LIVE ENTERTAINMENT**




Open 7 Nights

**NEVER A COVER**

**Right behind River Oaks Shopping Center**

For your health and comfort each club is equipped with electronic percipatators which remove smoke and impurities from the air.




# THE CACTUS

Take the Gulf Freeway to the Monroe St. Exit, take a Left under the Freeway to Monroe—Monroe then becomes So. Richey.

THE CACTUS 2612 SO. RICHEY 946-7840

## GOOD ROCK MUSIC AND YOUR FAVORITE BEVERAGES



# THE CACTUS

2612 SO. RICHEY  
7 DAYS A WEEK  
7 P.M. TILL 2 A.M.

