

# shellegram

SHELL OIL COMPANY  
HOUSTON REFINERY

SHELL CHEMICAL CORP.  
HOUSTON PLANT

VOL. 20, No. 9

HOUSTON, TEXAS

SEPTEMBER, 1955



Strong, united effort enabled the more than 2400 men and women of Houston Refinery to set an all-time safety record by compiling 1,921,328 manhours without a disabling injury between March 18 and July 26. This broke Houston Refinery's previous safety record of 1,906,680 hours established in 1939 and 1940. Above, three veteran employees typical of Houston Refinery's safety conscious personnel who help to establish the new record, hold a sign indicating the number of hours worked during this period without a lost-time accident. Left to right, they are A. J. Hayes, brickmason, Floyd Steward, Boilermaker, and H. F. McFall, Cat. Cracking.

## Refinery Service Club Schedules Two Parties

Two Refinery Ten-Year and Over Service Club parties have been scheduled this year for the first time following a survey of Service Club members by the Club's Committee.

The survey indicated that a majority of members preferred to have a dinner at the San Jacinto Inn with entertainment while a large percentage preferred a barbecue and Southwest Conference football game.

As a result of the survey, both events were scheduled, and Service Club members have been asked to notify the committee which event they desire to attend.

The barbecue and Rice-LSU football game is scheduled for October 1, and the dinner at the San Jacinto Inn is slated for October 10.

In order to insure indoor provisions in the event of inclement weather and to provide better service facilities, the Alamo Caterers Corporation of 2020 Kipling Street will be the site of the barbecue. Four large air-conditioned rooms will be set up to accommodate members choosing the barbecue and football game.

Facilities of the San Jacinto Inn have been made available from approximately 6 p.m. to 11 with a full-course dinner to be served at 7 p.m.

Members of the Service Club Committee are G. Atkinson and George Thorn, Engineering; L. J. Grossheim, Fire & Safety; E. L. Ford, Lube B, and G. L. Boatright and L. J. Hallmark, P&IR.

### Plant Has 3 Parties

September 30 and October 1 are the dates set up for the next two Chemical Plant Service club parties. The first program in 1955 was held on August 26.

Since the Houston Plant Service Club Celebrations last year were favorably received by the members a similar variety of programs was arranged in 1955.

This year some 350 employees are eligible to attend the annual service club parties. The dates of the programs were selected to enable men on shift work to participate in a program on a date on which they are not scheduled to work.

The Houston Buffs vs. the San Antonio Missions baseball game at Busch Stadium was on the bill for the kick-off celebration of 1955. Before the game everyone enjoyed a delicious dinner at Henri's Restaurant.

The International Ice Capades at the Sam Houston Coliseum, the second event of the year, will be held on Friday, September 30. Dinner at a Houston restaurant will also be held before the show. The dinner will be at 5:30 p.m.

Saturday, October 1 is reserved for the annual barbecue at Milby Park. The barbecue will start at 4:00, and will be followed by attendance at the Rice-LSU football game at Rice Stadium at 8:00 p.m.

Tickets for the wives of service club members to attend the Ice Capades or football game will be available for purchase on request of the members again this year.

*SERA Bathing Beauty Contestant Reaches "Miss Buff" Finals*

### SERA Bathing Beauty Contestant Reaches "Miss Buff" Finals



Barbara

N. A. Carrier's pretty 17-year-old daughter, Barbara, was a finalist in the recent Miss Houston Buff Contest. Out of an original field of 32 contestants, Barbara was among the six finalists to appear in bathing suits at Busch Stadium. Members of the Buff baseball team were the judges.

Barbara, it will be remembered, was second place winner in the SERA contest. Her fine showing in the Miss Buff contest speaks well for the SERA beauties. Mr. Carrier works in the Chemical Plant Shipping Department.

## 1955 Style Show Will be Afternoon Affair, October 8

The one SERA event that is strictly for the ladies has been set for October 8.

That, of course, is the annual style show.

This year's show will offer the new look not only in clothes but in the production of the event as well, according to Electa Young, Research, who is chairman.

### Popular Move

The show will be held on a Saturday afternoon instead of Friday night, as has been the practice for a number of years. This will probably be a popular move since there are many other activities on Friday nights.

Luncheon at 1 o'clock will get the program underway, followed by the fashion show at 2 o'clock.

This year's version will be held in the Crystal Ballroom of the Rice Hotel.

Sakowitz will stage the show, and Freddie Gibbons, the popular organist, will provide the music.

Tickets are priced at \$2.50 for members and \$3.50 for non-members. Deadline for buying tickets is October 5, and they may be obtained from Eileen Roberson (582), Jean Ament (415) and Doris Knight (452) in the Refinery and Doris Winner (244), Juanita Price (378) and Virginia Lowery (483) at the Chemical Plant.

Pat Short, Research, is Co-chairman of the show.

### WHAT'S INSIDE

- Four Safe Crafts ..... page 2
- Electricians Craft ..... page 4
- Water System ..... page 5
- SESC Picnic ..... page 6

### Shell Supplying Fuel For Capital's Viscount

Capital Airlines' Viscount, the first turboprop plane to go into service on the route of a U.S. air carrier, began operating during July with Shell Oil Company supplying the fuel.

Shell has the account to supply 150,000,000 gallons of fuel during the next three years for the 60 Viscounts which Capital plans to put into service. Three of the planes have been delivered and more will be on the way from the manufacturer soon.

The Shell fuel used by the Viscount's turbine engines is refined to flow freely at temperatures of 40 degrees below zero and to burn smoothly in the wind that blows through the combustion chamber at hurricane speeds.

Turbine engines are smaller and lighter than piston engines of the same power and they burn fuel containing more energy per gallon than gasoline. The turbine engine has been proven safe and economical for use in planes, ships and trains, and it is being studied for use in automobiles.

## Television Show To Kick Off Oil Week, October 9

Oil Progress Week will be held this year beginning Sunday, October 9.

During those seven days, thousands of refiners, dealers, jobbers, transportation and producers will help sponsor community activities designed to acquaint millions of Americans with the oil industry.

### TV Show Slated

Kicking off the week's activities will be an hour program to be presented over the NBC-TV network and carried locally over KPRC-TV from 2:30 to 3:30 p.m. on October 9.

This show will offer a composite picture of what scientific pioneers plan for America's future, featuring top TV stars and combining gaiety with drama and pinpointed prediction.

The program will present a glimpse of the future in the year 1976.

Refinery employees who might be interested in increasing their own knowledge of the oil industry are invited to review the wide variety of literature on the subject that is available in the Training Section of the P&IR Department.

In addition, a list of Shell films is also on file in the Training Section in the event any employees might wish to show one or more films to organizations to which they belong.

## Shell Premium Gas Has More TCP, Higher Octane

Shell Premium Gasoline with TCP\* now has the highest octane number in Shell's history and twice as much TCP as when the new gasoline was placed on the market in 1953.

Both the higher octane number and the increased amount of TCP are provided to meet the growing needs of modern high-compression engines. These engines must have a high-octane gasoline for knock-free performance. But raising the octane number does not solve all the problems of high-compression engines.

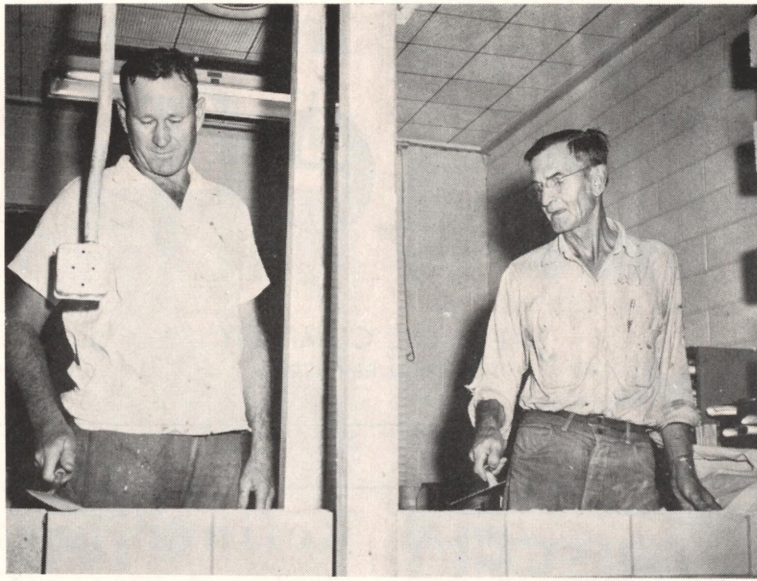
One of the major problems in these new engines is the gradual development of deposits in the combustion chamber, which causes loss of power. TCP, the Shell-developed additive, modifies the deposits, so that pre-firing and spark-plug fouling—major causes of loss of power—are controlled.

Shell now has doubled the amount of TCP in Shell Premium to counteract the problems raised by the increase in the compression ratio of modern engines.

Besides high octane and TCP, Shell Premium has those qualities needed to give a gasoline balance. It is blended from a combination of gasoline stocks to give: instant starting, fast warm-up, rapid acceleration, full power, full mileage, freedom from vapor lock and minimum crank-case dilution. In addition, Shell Premium with TCP is adjusted for the climate in which it will be used; it is clean-burning and extremely stable with a minimum of gum-forming tendencies.

### Little Things Add Up

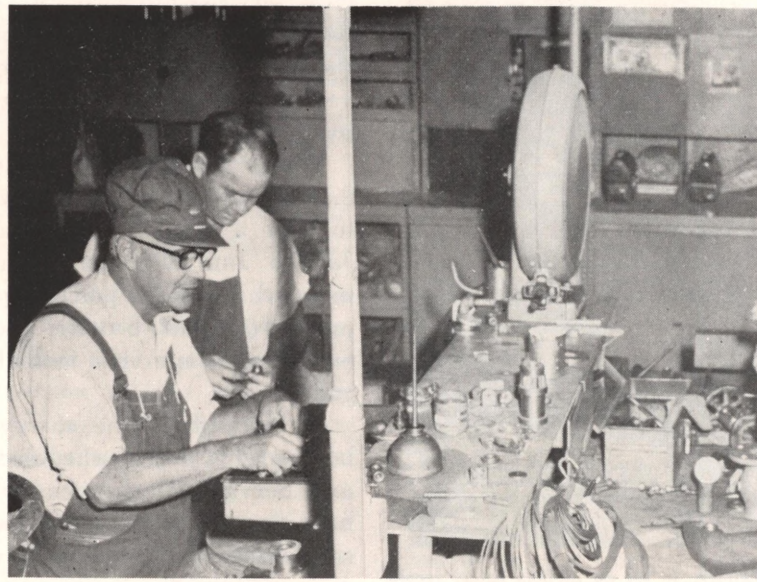
Being a liquid and highly volatile, oil is always attempting to escape, either as a liquid or gas. In being moved from oil wells to consumers, oil usually travels thousands of miles. At all stages of this movement, some loss is possible unless great care is taken. And when millions of barrels of oil movements are involved every day, little losses add up to vast amounts of waste. For that reason, control of loss is an important aspect of oil industry operations. Elimination of waste calls for careful teamwork among all involved in the transportation, storage and handling of crude oil and its products.



The Brickmasons have never had a lost-time accident, which illustrates the safety attitude of the men in that craft. G. F. Preece, left, and H. W. Creamer are working above.



The Insulators are justly proud of their outstanding safety record. Fabricating pieces of pipe insulation are E. L. Reimers, J. R. Roberts and J. H. McClendon, in the usual order.



Valve repairmen are conscious of their safety record and are striving to protect it and themselves. Left to right: H. G. Creed and J. E. Wilson.



These tinnermen can smile for their craft has never experienced a disabling injury. Making parts for air-conditioning units are J. P. Wolfe, W. F. Jackson and R. J. Pitts, in left to right order.

### Shell Chemical to Build New Plant at Ventura

Construction will start soon on a new Shell Chemical Corporation plant at Ventura, California, for the manufacture of urea which has the highest content of nitrogen among solid fertilizers. Nitrogen is the material most needed for plant growth.

Shell was a pioneer in the development and application of nitrogen-rich chemicals for plant food, having served the farmers of the West with anhydrous ammonia and ammonium sulphate for more than 20 years. With the new plant, Shell will be able to fill the needs of those western crops, for which urea is the most suitable nitrogen fertilizer.

Shell's will be the first urea plant west of the Rockies. It will obtain its raw materials, ammonia and carbon dioxide, from the adjoining Shell Chemical ammonia plant at Ventura.

## Two Small Crafts Boast Outstanding Safety Records

When you start listing crafts that have maintained an outstanding safety record through the years, make sure you don't omit the tinnermen, insulators, brickmasons and valve repairmen.

No tinnerman has experienced a disabling injury in the 26 years the refinery has been in operation. It has been over 15 years since an insulator suffered a disabling injury.

Neither the brickmasons nor the valve repairmen have ever

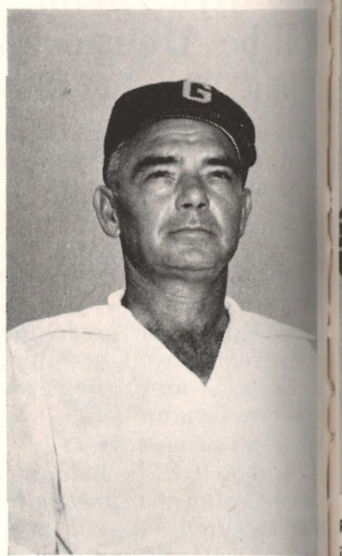
experienced a lost-time accident in the six and one-half years their crafts have been in existence.

Although these crafts are small in number, they follow all the rules of safety that have been prescribed for them as well as other safe-working practices they have learned from experience and common-sense.

Here is a break-down on the safety records of these four crafts.

Craft	Safe Man-Hours	Safe Days	Date Last Accident
Insulators	652,872	5,723	10-21-39
Tinnermen	214,499	9,637	—
Brickmasons	60,795	2,372	—
Valve Repairmen	57,519	2,372	—

### Champ Manager



R. L. Denson, Chemical Plant "G" Department, above, managed the Oil Worker Giants to the championship of Pasadena Teen-Age baseball leagues for 15 and 16 year olds.

## JOE & MOE



# REPORTERS' ROUNDUP

## 50 Enjoy Research Lab Picnic



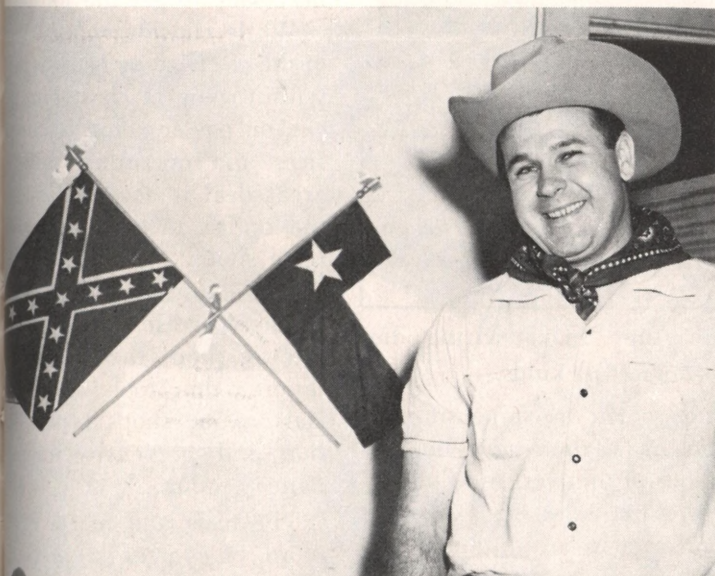
Chef Wally Anastasoff deals out "seconds" to a gathering of hungry Researchers during their picnic at the SERA grounds.

Houston Refinery's Research Laboratory held its annual picnic on July 30 at the SERA grounds, and a record 50 employees and guests attended.

Co-chefs for the delicious barbecue were Wally Anastasoff and Harry Sundland, a pair of Researchers.

Besides the food and cold drinks, there was dancing, pony rides and fishing.

Dick Walton was over-all chairman of the event, and A. F. (Jeep) Sartor was picnic photographer.



E. Van Dyke of Shell Development was given a warm Texas farewell following the completion of his year of training at Houston Refinery. Members of the Technology Department presented Dyke with a Stetson Hat, a Texas Flag and a Confederate Flag prior to his return to Emeryville.



The Pasadena Jaycees are helping to collect donations for the Pasadena Youth Center through this beautiful boat, motor and rig. Shellmen who belong to the Pasadena Jaycees are pictured above in front of this boat, in left to right order: Walter Ritchie, Ben Brown of the Chemical Plant, and Fred Wichlep, Buddy Yannazzo, Henry Boggs and Bill Ballew of the Refinery.

## New Refinery Supervisors Named



C. M. Sharpe  
Zone Foreman

F. Pierott  
Labor Foreman

E. C. Kuhlman  
Craft Foreman (Boilermaker)

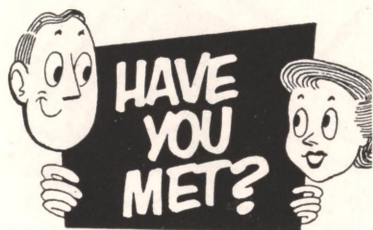
H. M. Wallace  
Craft Foreman (Pipefitter)



L. F. Grove  
Craft Foreman  
(Tinner)

R. R. Crawford  
Craft Foreman  
(Carpenter)

B. J. Gibson  
Supervisor  
Gen. Accounting



- CHEMICAL**  
Engineering  
T. W. Anderson, *Engineer*.  
F. H. Berger, *General Helper*.  
H. D. Ferguson, *Engineer*.  
C. R. Lucado, *Engineer*.
- Laboratory  
R. E. Bucksat, *Chemist*  
J. A. Carney, *Chemist*  
P. E. Gruber, *Chemist*  
E. R. Hinden, *Chemist*  
E. G. Johnson, *Chemist*  
E. L. Plyler, *Chemist*  
G. C. Smith, *Chemist*  
E. W. Unger, *Chemist*
- Research  
W. O. Overton, *Research Technologist*
- Treasury  
H. J. Duncan, *Stenographer*  
C. L. Frost, *File Clerk*  
R. O. Skillstead, *Clerk*

- REFINERY**  
Control Lab  
C. W. McWilliams, *Chemist*.  
D. M. Phillips, *Clerk*.  
Jeanne Schultz, *Chemist*.
- Engineering  
Margaret Ann Tilton, Jr., *Operator, Blue Print Machine*.  
Fire & Safety  
B. H. Hill, *Gateman No. 1*.  
Research Lab  
J. B. DuBois, *Research Engineer*.  
T. E. McKee, *Research Engineer*.  
L. S. Leonard, *Research Engineer*.  
Ramon Lopez, *Research Engineer*.  
E. F. Roque, *Research Engineer*.  
R. G. Soehlke, *Research Engineer*.
- Treasury  
Josephine Bennett, *Stenographer*.  
Helen Miller, *Stenographer*.  
F. C. Trim, *Clerk*.  
Nell Wells, *Stenographer*.

## Safety Equipment Saves Two Refinery Men from Injuries



Adams



Guillory

G. W. Guillory and Edward Adams, both of the Refinery Labor Department, can thank their safety equipment for saving them from possible injury.

These two men were involved recently in separate incidents which clearly demonstrate the value of proper safety equipment.

Guillory was using an air hammer to break up a cement road. A chunk of cement flew up and struck the right lens of his goggles. The force of this blow shattered the lens but did not harm Guillory.

Had he not been wearing his goggles, he could have lost an eye. The blow might possibly have been fatal.

Adams was moving a heavy scintillator-counter shield into the Research Lab when the 400-pound instrument hit the toe of his right shoe.

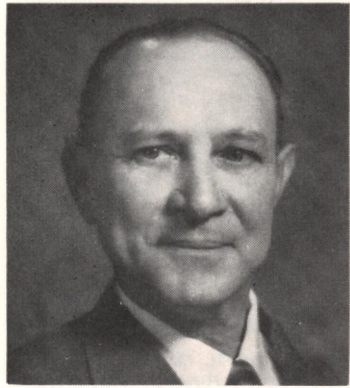
Would his foot have been injured had he not been wearing his safety shoes? The answer is obvious:

When the instrument fell, it sliced through the shoe to the protective steel plate. That steel plate saved his foot from a severe injury.

**FRED WICHLEP, Editor**  
**JO KELLEY, Associate Editor**

Published monthly for employees of Shell Oil Company, Houston Refinery, and Shell Chemical Corporation, Houston Plant. Contributions of articles and photographs are welcomed. Address all communications to EDITOR, SHELEGRAM, Shell Oil Company, P. O. Box 2527, Houston 1, Texas.

## Morris Retires From Shell Oil Co. After 26 Years



Morris

Earl G. Morris retired on pension on August 1 after an extended illness.

He has been a part of Houston Refinery since its first year of operations. Although he spent all of his 26 years of service in the Blacksmith Shop, Earl has many friends throughout the Refinery.

Born in Port Lavaca, Earl makes his home at 7121 Narcissus in Houston.



### CHEMICAL PLANT

Jan. 16: Lois Virginia, daughter of Mr. and Mrs. J. E. Fulton (Pipe Shop).

April 15: Terry Paul, son of Mr. and Mrs. D. B. Williams (Paint Shop).

June 6: Joe Calvin, son of Mr. and Mrs. C. S. Marshall (Pipe Shop).

July 1: Janet Leigh, daughter of Mr. and Mrs. R. L. Maddux (Military Leave).

July 3: Ralph Edwin, son of Mr. and Mrs. F. C. Mitchell (Pipe Shop).

July 4: Roy David, son of Mr. and Mrs. D. J. Fincher (P & R).

July 6: Susan Renee, daughter of Mr. and Mrs. H. G. Sealy (E Dept.).

July 8: Ronald Dean, son of Mr. and Mrs. W. H. Norman (Rigger).

July 9: David Wayne, son of Mr. and Mrs. Billy Joe Esery (Automotive).

July 15: Dale Wayne, son of Mr. and Mrs. M. L. Martin (P & R).

July 25: Roxann, daughter of Mr. and Mrs. M. O. Ruddock (P & R).

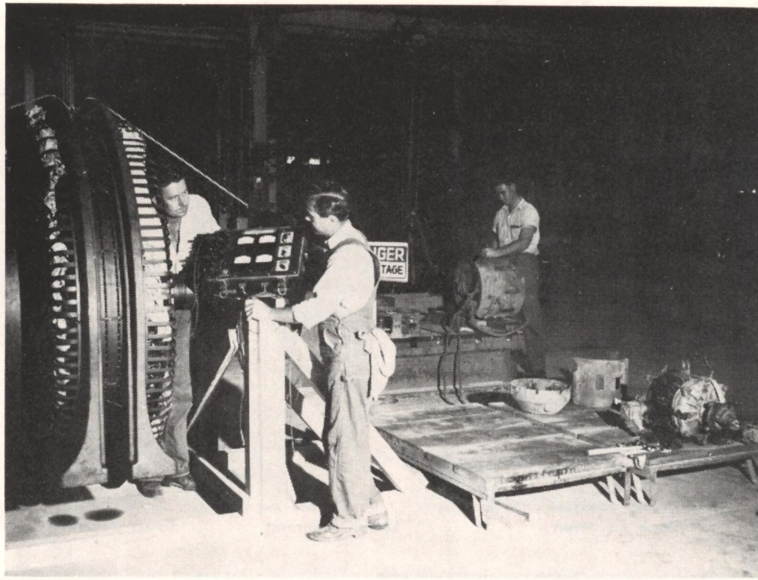
July 28: David Lee and Daniel Lee, sons of Mr. and Mrs. E. L. Niederhofer (Carpenter Shop).

July 30: Rickey Dean, son of Mr. and Mrs. D. G. Kieke (General Helper).

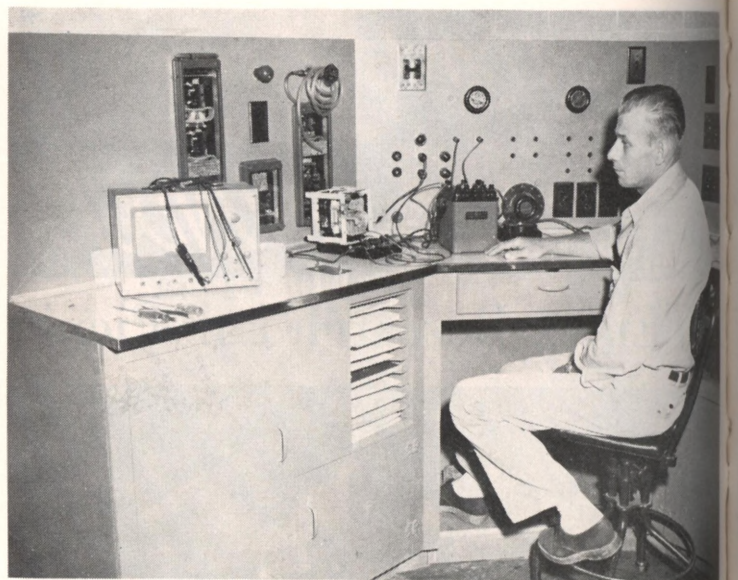
Aug. 6: Chris Edward, son of Mr. and Mrs. C. E. Clemons (Engr. Field).

### Retirement Program

Shell's Planning for Retirement Program is designed to furnish information on some of the questions about retirement, to stimulate thought about the problems, and to encourage each individual to make plans to suit his own needs.



J. P. Mangham, left, C. D. Townsend, center, inspect a 2300 Volt synchronous motor in the shop repair section. W. A. Linke works in the background.



D. A. Wagner checks a relay device in the instrumentation room

# The Electricians Craft

You've no doubt had an occasion at one time or another to use an electrical apparatus in the refinery — whether it has been simply to flip a light switch, dial a telephone or whether it's been to operate a drill or a generator.

And chances are, you've taken these electrical services pretty much for granted: You flip the light switch and the lights go on; you start your drill and, presto, it starts humming.

### Take For Granted

This is to assure you that you can go on taking these things for granted, thanks to the efforts of men who never take them for granted.

They belong to the electricians craft, and it's their job to install and maintain the refinery's electrical equipment and electrical system.

The electric craft is composed of electricians, linemen and telephone repairmen.

### Electricians Largest

Of these three groups, the electricians are the largest, personnel-wise, with 32 first class mechanics, four second class mechanics and 17 helpers. Next comes the linemen with 11 linemen first class, two linemen second class and six helpers.

E. J. Wollard is the lone telephone repairman, although several first class electricians



J. C. Johnson, left, M. W. West complete a maintenance job atop one of many power poles in Houston Refinery.



C. L. Easton, left, and B. R. Jackson finish digging a hole in which a power light pole will be installed.

### FOURTH OF SERIES

*This is the fourth in a series of articles on the various Refinery crafts which are so vital to efficient operations.*

and linemen are trained to do the job.

Electricians install, operate and maintain all types of electrical equipment as well as the refinery's electrical system.

They periodically inspect electrical equipment for serviceability and to note amount of wear and tear.

Electricians work approximately 50% of the time from simple blueprints and sketches in rough form, and when necessary to perform the assigned

job, they make wiring diagrams of all kinds.

Linemen are responsible for the installation and maintenance of an overhead and underground electrical distribution system within the refinery, involving such installations as overhead and underground lines and cables, street lighting, lighting and power distribution transformers and substations.

Both electricians and linemen must have dexterity to operate and safely handle respective tools of the trade, and they must be able to work on delicate equipment.

### Do The Climbing

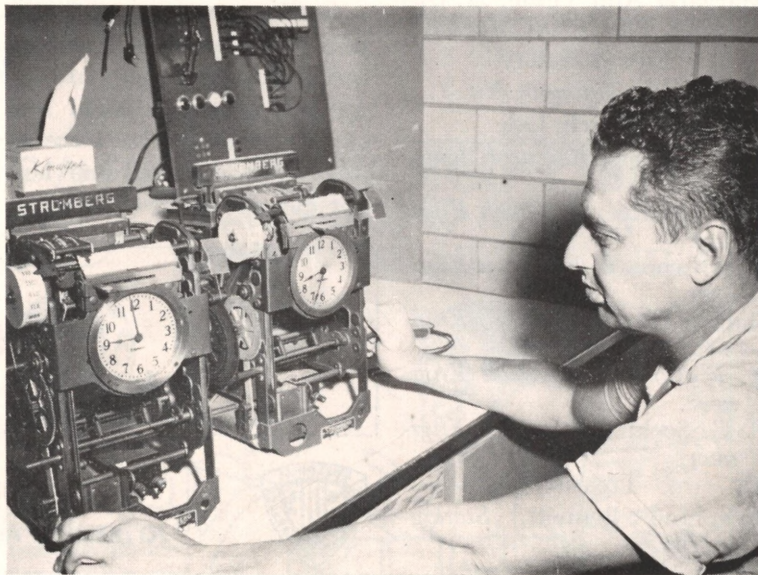
Only first and second class linemen do the climbing when there's work to be done high above the ground on light and power poles. Helpers serve as ground men on these operations, and it's their responsibility to send up to the linemen the tools and equipment necessary to get the job done.

While considerable amount of the electricians work is done within view of most employees, on power poles, in the offices and operating units, a great deal is accomplished in the craft's modern and complete shop.

### Four Parts to Shop

There are four parts to the electric shop: the instrumentation room; tools and materials room; shops repair section and preventive maintenance section.

The tools and materials room, of course, is where the electrician's tools and equipment are stored. In the other three sections of the shop work is performed that enables you to take your electrical services for granted.



E. R. Goerlich checks the timing of two clocks in the instrumentation room. C. J. Pridgen normally does this work, but was on vacation when the photo was taken.



L. A. Drewery checks out a piece of equipment from L. Hinton of the electric shop's tools and materials room.

# Water System to Deliver 5 Million Gallons Daily

Houston Refinery last spring launched an ambitious construction program, consisting of:

1. A hydrosulfurization unit and a second platformer for the upgrading of straight run naphthas to high octane gasoline components.

2. A treating plant, pumping station and distribution system for water from Lake Houston.

3. Four 250,000-barrel tanks for product storage.

4. A 650-pound boiler with a capacity of 250,000 pounds hourly to take care of plant growth.

Details of all four phases of this construction program were carried in the May issue of the SHELLEGRAM.

### In Full Swing

Construction is in full swing, and all parts of the expansion program are expected to be completed early next year, with the exception of the Boiler, which is due to be finished by June of next year.

Beginning with this issue, articles will be carried from time to time on the separate phases of the expansion program to keep you abreast of their progress.

The first article in this series concerns the San Jacinto River Water Supply Tie-In.

Houston Refinery's new water supply system, when completed, will deliver to the refinery five million gallons of water daily from the Lake Houston Reservoir.

Shell's use of the water from the Lake Houston reservoir is important to the company and its employees because it will provide a source of water for future expansion of the Refinery and Chemical Plant.

### Retard Settling

In addition—and this is important to the nearby communities as well as it is to the company — by using water from the Lake Houston reser-

voir, Shell will help to maintain current water table levels and retard the rate of ground settling in the area.

Water from the Lake Houston reservoir flows through an open canal to a purification and pumping station, at Galena Park on the north side of the channel, and then is pumped to the south side in two 30-inch steel lines, which terminate on the south side in a 60-inch header system.

### Program Begins

It is at this header system that Shell has tied in with the water supply from Lake Houston and, as a result, it is where this phase of the construction program began.

Hank Lewis, Engineering, explains the water supply system construction by breaking it down into six parts, which are (1) A 42-inch raw water supply line; (2) water treatment plant; (3) Shell booster pump station; (4) A 24-inch treated-water supply line; (5) reservoir, pump bay and control house, and (6) in-plant distribution system.

The 42-inch line, which will carry the water from the header system to the water treatment plant, and the 24-inch line, which will carry the water from the Shell pump station to the Refinery reservoir, were expected to be completed by around September 1.

Adjacent to the reservoir, which is located on the western part of the refinery property, the pump bay and control house will be constructed. The pumping station will pump water through the 24-inch concrete distribution system to the east property well water system, which supplies make-up water for the cooling water towers. There will also be a 14-inch line to supply make-up water for west property cooling towers.

Pumping units at the reservoir will be driven by exhaust steam previously vented to the atmosphere.

The reservoir will be lined with asphalt produced here in the refinery and processed into sheets suitable for installation.

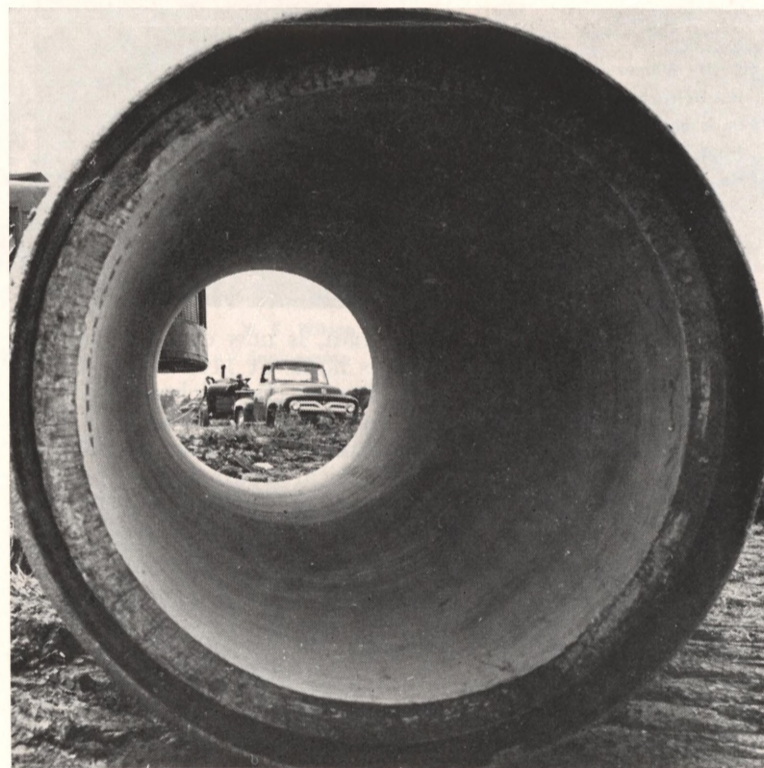
R. R. Leveille is working with Lewis on the engineering of this phase of the construction program.



48-inch gate valve is being set on the water system's main head to enable Shell to tie-into the water supply from Lake Houston.



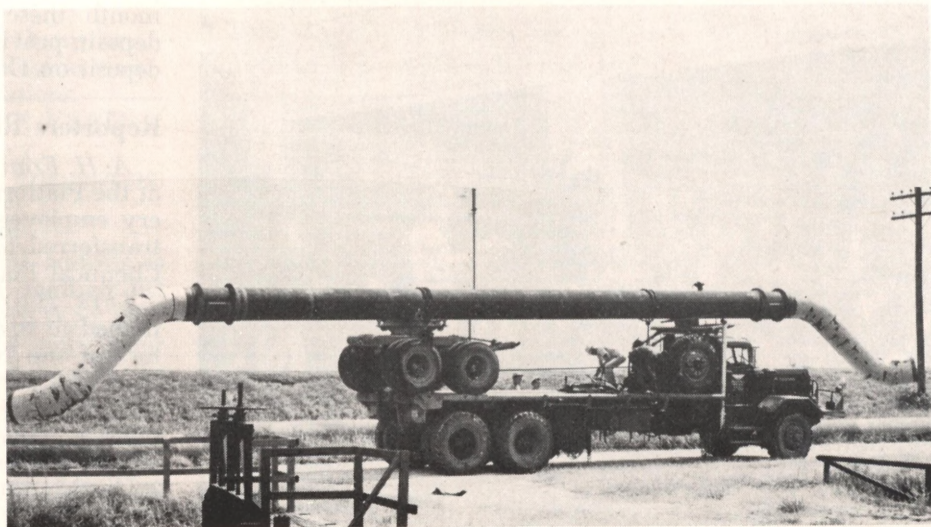
A section of the 24-inch treated water line that will transport the water from the treatment plant to the reservoir is shown above.



A section of the 42-inch raw water supply line that will carry the water from the header system to the Treatment Plant is shown above.



The water treatment plant, undergoing construction, is shown in the background



This pipe section will be installed across the Refinery's "Big Ditch" and will carry the treated water to the reservoir.

## Chemical Plant HERE & THERE

### Members of Plant Machine Shop Attend Party at Wright's Home

K. Z. Wright and his wife, Marie played hosts to the folks in the Machine Shop for a big party which was held on July 30. The party took place at the Wright's Club House in La-Porte. The Wrights furnished all the ice and set-ups, Marie with the aid of Betty Browning and Joy Kincade took care of the food department, and in fine style too. The feature event of the evening was the Bunny Hop by J. N. Childs. One of the guests remarked that he had never seen the Machine Shop bunch so active as they were out on that dance floor. Those who attended were: C. N. Rusk and Betty Johnson; C. R. Ford and Dottie Goodman; R. L. and Betty Browning; Elmo and Joy Kincade; F. E. and Betty North; Joe and Jean Vachule; E. G. and Joy Ruff; Eddie and Lavone Hentchel; J. N. and Millie Childs; S. T. and Maurice Hancock; Fred and Mattie Lynch; Jimmy and Norma Davidson; H. L. and Hazel Waddell, Jim and Cely Baldwin; M. H. and Virginia Waldrip; C. P. and Virginia Barr; G. B. and Frances Richardson and cousin Irene Lauder milk; and W. E. Stephens.

★ ★ ★

Doris Winner is one of the Houston women who attended the National Secretaries Association's 10th annual convention this year. The convention was held in Chattanooga, Tenn., Wednesday, July 20 through Saturday, July 23. Mrs. Ivy Baker Priest, Treasurer of the United States gave the keynote address at the convention. Her subject "The Secret of Success Is Constancy of Purpose." Doris, who has been with the association for only a little over a year, has been a very active member. She is the newly elected Treasurer of the Houston Chapter and has served as Membership Chairman for the organization. She also serves on the Speakers committee. She was on the team that took part in the Sunday morning TV program "Charades." Her team won twice, but the third time lost to another organization. Doris and Virginia Lowery are the only members to the Association from the Chemical Plant at the present time.



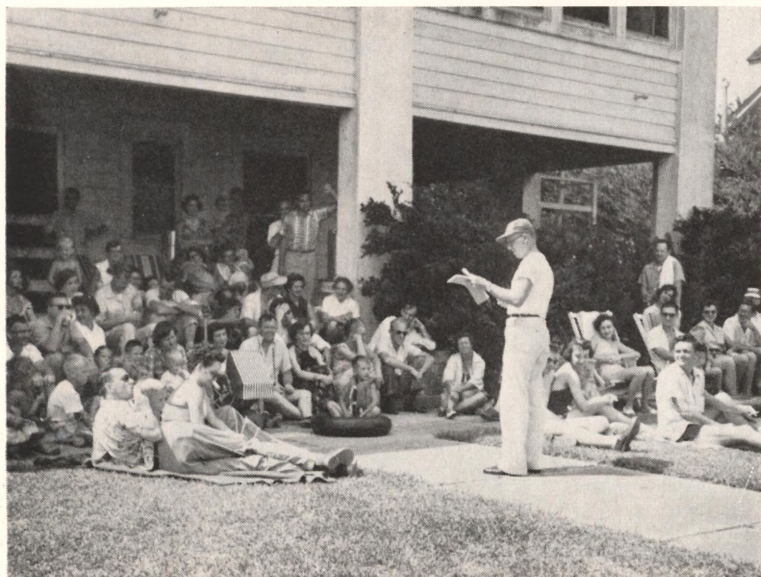
Doris Winner at presentation of Houston Chapter's award of merit. Doris is second from the left on the front row. The President of the Houston Chapter is accepting the award.

Ben Walling, a retired Gateman, is now operating a fixit shop. He has his work shop in his home at 1102 Noble in the north side over by Washington Junior High School. Ben had some clever cards printed and his slogan is "Walling's Fixit Shop Repair Anything but a Broken Heart." He can do anything from plumbing repair to electrical repair work. The shop started as a hobby but now he spends most of his time keeping up with requests.

★ ★ ★

Two Chemical Plant employees made the Bowling news recently when they took first and third honors at the Ragtime doubles at Lawndale Bowling Alley. R. F. (Dike) Slovak, Machine Shop and his partner won first place by rolling 1265. Ralph Sproston, Engineering-Development, and his partner took third place with a 1257, only missing second place by two pins.

### Researchers Enjoy Howald's Picnic Skit



Jerry Howald contributes to the ceremonies, as crowd looks on.

## Questions on Patronage Dividend Answered by Credit Union Officials

In order to receive a patronage dividend at the end of the year from the Credit Union:

Members must have an active share or savings account on December 31.

But they need NOT have an active loan on December 31st.

These are the answers to the two most-asked questions since the Credit Union recently announced that it had adopted a patronage dividend.

What it all boils down to is this:

In order to maintain the sound financial condition of the local Credit Union, a patronage dividend was adopted as a means of reducing the interest rate on loans, effective this year.

In other words, Credit Union borrowers will get back a portion of their interest paid on loans during the year. The patronage dividend will range from 5 to 40%, with the exact percentage to be determined by the number of borrowers participating and the total interest paid during the year.

For example, if a 10% patronage dividend is approved, then every borrower participating will receive \$1 on every \$10 he paid in interest on loans. A person paying \$100 in interest would, in this case, receive \$10 as his patronage dividend.

Now, this applies to interest paid on loans at any time during the year, and these loans do not have to be active at the end of the year (or for any period of time) for the member to be eligible for the patronage dividend.

As an illustration, if a Credit Union member had made a loan in April and finished paying it off in July, at the end of the year he would get back a percentage of the interest paid on that loan even though he would not be paying interest on the loan on December 31st.

On the other hand, if this person were to pay off the loan and subsequently withdrew from the Credit Union by closing out his share account before the end of the year, he would not be eligible for the patronage dividend even if he reopened his account at a later date.

Credit Union officials also pointed out that the annual dividend on shares would continue to be paid to members. Dividends are paid on multiples of \$5.00 for every full month these shares were on deposit, provided they were on deposit on December 31.

### Reporters Round Up Con't.

A. H. Franz, Operator No. 1 at the Platformer and a Refinery employee since 1939, has transferred to the new Norco Chemical Plant.

Iris Harmon has been named to the Board of Directors of the National Association of Cost Accountants as Associate Director of Publications . . . This is quite an honor since there are only five women in this 390-member organization.

Not to be outdone by his 17-year-old son LeRoy, who is



Here is a photo of the barbecue being prepared to tender perfection.



E. Bratcher, S. L. Richardson, H. L. Shorts, H. O. B. Kizzee and A. (Daddy) Grant are among the SESC members shown here.



J. McCray, left, and A. A. Gross attack the barbecue line from opposite directions.

### SESC Picnic Attracts One of Largest Crowds in History of Organization

The Shell Employees Social Club held its annual family

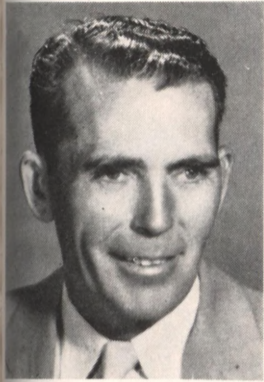
outing at the Bagnby-Wyatt Camp near Tomball, and SESC President D. C. Marbley termed it one of the most successful ever staged.

Some 300 members and guests turned out for the affair, and they enjoyed barbecue, cold drinks and games. Marbley said he wished to thank everyone who helped out and everyone who attended for making the affair such a grand success.

Photographs of the outing, which are presented on this page, were taken by Shellegram Reporter R. L. (Gip) Gipson.

performing in a gigantic water thrill show in Chicago, Cecil Herren recently won the overall water skiing championship in the veterans' division of the South Central Region . . . Held in MacQueenie, Texas, the regional meet attracted the best water skiers from five states: Texas, Oklahoma, Arkansas, Mississippi and Louisiana . . . Besides winning the veterans' overall title, Cecil took first in the Slalom event and won third in the jumping competition.

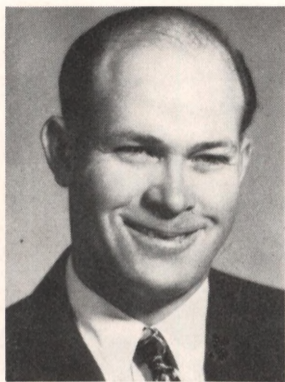
# September Shell Service Anniversaries



25 YEARS  
R. G. Daniels  
Dispatching



25 YEARS  
L. A. Williams  
Dispatching



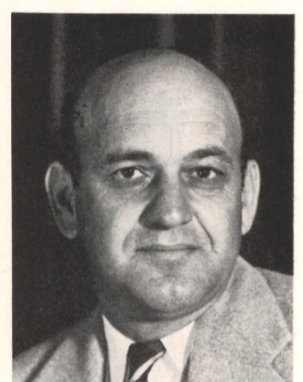
20 YEARS  
O. B. Anderson  
Engineering



20 YEARS  
L. Armstrong  
Engineering, Chemical



20 YEARS  
C. V. Barbe  
Treasury



20 YEARS  
J. W. Chandler  
Operations, Chemical



20 YEARS  
R. F. Clayton  
Lubricating Oils



20 YEARS  
H. Ecbly  
Engineering, Chemical



20 YEARS  
C. D. Fisher  
Engineering



20 YEARS  
J. S. Gonzales  
Engineering



20 YEARS  
R. Hargrove  
Engineering



20 YEARS  
J. Holt  
Engineering, Chemical



20 YEARS  
C. E. Leonard  
Engineering, Chemical



20 YEARS  
E. B. Lierman  
Treating



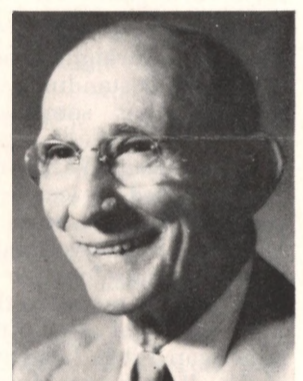
20 YEARS  
J. L. Murphy  
Research



20 YEARS  
I. Shultz  
Technological, Chemical



20 YEARS  
V. E. Wilson  
Engineering



15 YEARS  
H. A. Whitehead  
Treasury

## Shell, Deer Park Sign Tax Agreement

Shell has established a reputation through the years of being a good neighbor in the communities in which company installations are located. Once again, on August 4, Shell proved itself to be a good corporate citizen when representatives of the Shell Oil Company and Shell Chemical Corporation plants, together with officials of the City of Deer Park, signed an agreement which stands to triple the city's annual income derived from property taxes.

The agreement climaxed several years of litigation, starting when the Shell Companies questioned a Deer Park ordinance annexing portions of the plants.

Although the State Supreme Court this spring ruled in favor of the Company, Shell representatives continued to negotiate with the City of Deer Park for a settlement that would be mutually acceptable.

The contract provides that the Shell Companies will pay a sum annually equal to twice the amount collected by the City through ad valorem taxes on real property within its

limits, excluding those levied against properties owned by Shell.

Certain properties along Shell's boundaries have recently been annexed by Deer Park and normal taxes will be paid on them.

The contract is to be in effect for ten years, subject to certain termination provisions. It stipulates that the total sum paid by the Shell Companies will not exceed \$125,000 annually.

As an accommodation to Deer Park, the Companies agreed to advance \$20,000 this year against payments for 1956, the first year in which payment by Shell is to be made. The Companies agreed also to provide Deer Park with a combination city hall and fire station costing not more than \$70,000.

It is anticipated that in its first full year, the agreement will yield Deer Park approximately \$80,000, and as the town's population and taxable property increase, the payment will increase until the maximum of \$125,000 is reached.

## TEN YEARS Refinery

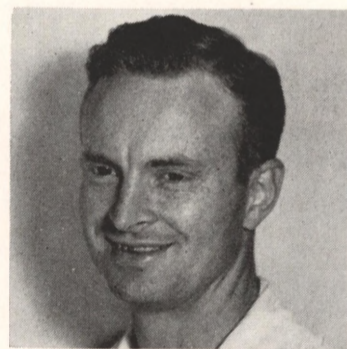
- E. L. Childs, Engineering.
- H. H. Dietzman, Engineering.
- H. A. Ellison, Engineering.
- F. F. Guidry, Engineering.
- W. S. Hern, Control Lab.
- T. A. Hiett, Research.
- S. J. Kent, Research.
- K. M. Mathis, Gas.
- R. L. McGraw, Utilities.
- H. W. Richardson, Engineering.

## CHEMICAL

- W. J. Babineaux, Engineering.
  - M. S. Johnson, Operations.
  - J. E. Owens, Engineering.
  - S. Reese, Operations.
- ## TWENTY-FIVE YEARS Refinery
- J. L. Dunham, Engineering. (on sick leave)

Your name and address is on the Company mailing list for SHELL NEWS, the SHELLEGRAM and other material. So if you move, be sure to give your supervisor and P & IR your new address as well as your old one—before you move if possible. That will insure prompt and uninterrupted delivery of all Company mail to you.

## Chemical Plant Names New Supervisors



Jim Sims



Roger Williams

Two Chemical Plant employees have been promoted to Supervisory positions in the last few months.

Jim Sims became Supervisor in the Shipping Department in April. He had just returned from New York where he had been assigned as an Analyst in Head Office—Distribution. He was employed in September of 1947.

Roger Williams was promoted to Labor Sub-Foreman in Engineering Field Department. He took over his new job in May. Roger has been with Shell since June of 1941.

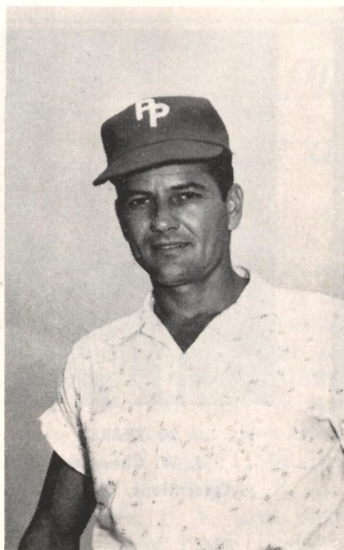
## Offers Free Cocker Spaniel

Fred Vidaurri, Engineering, wants to give his one and a half year old Cocker Spaniel to anyone who desires a nice dog and will give it a good home. The dog is male, black, and has a permanent distemper shot. If interested, Fred's home phone is GR 2-7337 and his address is 1805 So. San Jacinto in Pasadena.

## Report All Injuries

No matter how minor an injury on the job may be, it is important to report all injuries when they occur.

## Team No. 2 Awarded Handsome City Industrial League Trophy



Ashe

### Vic Ashe's Team Ties for Title

Vic Ashe, Instrumentation at the Chemical Plant, is the manager of the Park Place Cardinals. The Cards took the Co-championship in the Freeway American Little League. The team boasts of having the strike out champ of Houston, young John Dodson, who fanned 139 batters in 64 innings, and never struck out less than 12 a game. He was selected to the All-Star team for the second straight year. The team's final standing was 12-7-1. Vic has some mighty strong batters on his team this year too. Ken Watts and Vic Ashe, Jr. tied for league home-run hitters with three each. Vic has been working with Little League for four years now. He also managed the All-Star team of the Freeway American Little League. Four of the all-stars came from Vic's Cardinals and the other boys from the four other clubs in the league.

Hail the champs . . . Chemical Plant softball Team No. 2, that is. After finishing second to the Refinery Team No. 6 in the SERA League, Team No. 2 went on to capture the City Industrial League play-offs.

As announced in last month's SHELLEGRAM, Team No. 2 won the Industrial Championship by defeating their Shell brethren, Team No. 6, in the finals by a 12 to 4 margin.

The final game at Heights Lions Field was a thriller. Behind 0 to 4 after five innings, the Chemical Plant team suddenly came to life in the sixth inning, scoring all 12 of their runs.

In this big inning, George Summerlin and Dudley Hargrove each banged homers for the champs. George's round-tripper came with the bases loaded, and Dudley's blast scored a man ahead of him.

Besides his homer, Hargrove connected for a single and a double.

Summerlin handled the pitching chores for the winners, gaining his third win of the playoffs. He had previously beaten Humble and First National Bank.

Other Chemical Plant pitching heroes were D. J. Shaw, who beat Gulf Gleam, and Clovis Lewis, who subdued Schlumberger Instrument Shop.

George W. Kilgore, managed Team No. 2 during regular season play, and in his absence, Ray Duncan led the Team during the playoffs.

Most of the players on Team No. 2 played on the last SERA team to win the City Industrial League playoffs back in 1952, and 1951.



Members of SERA Softball Team No. 2 who took the City Industrial League Championship for 1955 in an exciting game against SERA Team No. 6. Left to right, back row are: G. W. Kilgore, D. D. Jones, D. Hargrove, Louis Stansel, Red Shaw, Frank Deaton. Front row, left to right are: Don Domingue, George Summerlin, Ray Duncan, Jim Denson, Bub Goolsby, and Woody Woodard. Team members not pictured are: Clovis Lewis, Wallace Crow and Ken Greene.

### Six Shellmen Join New Engineer Club

Six Shell employees are among the members of the San Jacinto Engineering Club which was formed recently by and for East Harris Countians who earn a livelihood in engineering and related fields.

The Shellmen are Fay Hilliard, president, Bob White, trustee, and George Dulany, Russell Findley, Fred Vidaurri and J. A. Nepveux.

While most of the members of this new group are eligible to participate in technical societies in Houston, the difficulties of time and travel have resulted inevitably in poor attendance and membership, with resultant loss of value to those involved.

Recognizing the need for an organization to fill this obvious void, a small group of interested engineers met on February 5 of this year to discuss this project. Out of the deliberations and committee work of this group, emerged on April 30 the San Jacinto Engineering Club, which has as its purpose "to further the technical and social development of its members, and to promote the civic and public good of the community.

Shellmen who are among the club's charter members are Harry Evers (retired), Bob Hyde (transferred) and Hilliard.

Membership qualifications are tailored to appeal to the several hundred potential club members in this area. Lack of a college education does not count out potential members who have at least five years engineering experience.

The club meets on the second Tuesday of each month at 7 p.m., and initiation fee is \$5 and the annual dues are \$10.

The club is not affiliated in any way with other professional or technical organizations, agencies or groups.

#### Expresses Appreciation

Kenneth R. Harlan, Instrument Shop, has asked the SHELLEGRAM to convey his deep appreciation to his friends throughout the Refinery for their kindness and thoughtfulness during the hospitalization of his son, Kenneth Ray, who passed away on July 28. Mr. Harlan said that his friends in the Refinery were a source of consolation during his time of sorrow and that he is grateful to each of them.

### SERA Beats Humble in Tennis

The bright light of this season's intercompany matches came on Saturday, August 6 at Baytown, when the SERA won their first match against the Humble Oil Co. Refinery teams (7 to 6).

Most of the matches were very close and everyone got a lot of enjoyment out of them. The Tennis group is looking forward to a veteran engagement with Humble the latter part of September. The scores of the August 6 were as follows:

#### Singles (1 set)

Shepard (Humble) over Jack Sargent (Chemical Plant A Department) 7-5.

Strickland (Humble) over Ed Millin (Chemical Plant, Laboratory) 6-2.

Webber (Humble) over Nelson King (Refinery, Cracking) 6-3.

Ed Millin (Chemical Plant, Laboratory) over Field (Humble) 6-0.

Guy Dutcher (Chemical Plant, Laboratory) over Duvviddie (Humble) 6-3.

Joe Bunn (Chemical Plant, Laboratory) over Boynton (Humble) 6-3.

Allen (Humble) over Bud Kersh (Chemical Plant, Pipe Shop) 6-2.

Savoi (Humble) over Tom Mitchell (Chemical Plant, Laboratory) 6-4.

Bill Hudson (Chemical Plant, Machine Shop) over Stanhis (Humble) 6-4.

#### Doubles (2 out of 3 sets)

Sheppard & Webber (Humble) over Sargent & Millin (SERA) 6-4, 5-7, 6-3.

Bunn & King (SERA) over Allen & Boynton (Humble) 2-6, 6-4, 7-5.

Dutcher & Hudson (SERA) over Savoi & Dochendorf (Humble) 6-3, 3-6, 6-2.

Kersh & Mitchell (SERA) over Collins & Stanhis (Humble) 6-1, 7-5.



There is a lawyer in the Lab—E. D. Mays, known to everyone as Don, is a fullfledged lawyer. Don received a LL.D. degree from South Texas College in August of 1954. It took him five years to earn his degree and every credit hour was made in night school. Shortly after he came to Houston in February of 1949 to work for Shell, Don enrolled. He attended classes four and sometimes five nights a week. Even taking some summer classes. Studying law was an ambition which Don had felt for quite some time. When he was majoring in Chemistry at LSU, he had planned to go into Law School immediately after graduation, but decided to come to work instead. Don not only accomplished all of his Law school in night classes, but he passed the Texas State Bar examination in his first attempt, which is very outstanding. Don hopes someday to put his law knowledge to work, but at the present time is satisfied just to know he doesn't have to go to school tonight. Don is a Chemist in the Laboratory.



Anyone who thinks swimming season's over for another year had better take a second look. Publicizing the advantages of September swimming is Glenna Alford, Chemical Plant Duplicating Operator.

**SHELL OIL COMPANY**  
P. O. Box 2527  
Houston 1, Texas  
Return Postage Guaranteed

Sec. 34.66 P. L. & R.  
U. S. POSTAGE  
**PAID**  
Deer Park, Texas  
Permit No. 1