

Shellegram

Deer Park Manufacturing Complex

Thursday, March 22, 1979

Vol. 44, No. 12



The Bluegrass Ramblers play with "their hearts on a string." It's Marvin Hutchins on the banjo, John Tielke on the mandolin, Kenneth Holder on the fiddle, Johnnie Martin on the guitar, Rod Herrod on the bass and Don Eggers on the dobro. Marvin, Johnnie and Rod are DPMC employees.

Bluegrass: A Picker's Music

Bluegrass is something everyone ought to experience at least once in their lifetime. At least that's how Johnnie Martin, lead singer and guitarist of the Bluegrass Ramblers, feels about the music that has played a significant role in his life, and that of his family, for the past 15-16 years.

According to Johnnie, a machinist in Maintenance South, Bluegrass music got started in Appalachia when homesteaders with a fiddle or banjo would get together and play until they could play no more. He continued by saying that Bluegrass has been kept separate from the majority of those playing country music by "diehards" who kept maintained it as nearly as possible to its original form, which is more country than the country music you now hear.

Although Bluegrass has its origins in the Appalachian ballads handed down by 18th century emigrants from the

British Isles, it didn't get the name Bluegrass until the early 1930s, when Bill Monroe of Kentucky formed a band called, "The Bluegrass Boys." Using non-amplified string instruments, Bill Monroe's group played those early emigrants' ballads and new ones modeled on the old. The resulting sound was considered new by the music industry. So when others copied The Bluegrass Boys, the music industry labeled their music, Bluegrass. It's only been within the last four or five years that Bluegrass music has gained recognition as a style of its own.

In the late 1960s, an East Coast promoter conducted the first Bluegrass festival in Virginia. Today there are hundreds and hundreds of festivals held throughout the country. Some of the festivals draw large numbers of people. For example, the one held in Hugo, Oklahoma, over the first weekend in

August draws anywhere from 20,000 to 30,000 Bluegrass fans.

Johnnie holds his own four-day Bluegrass festival in Pollock, Louisiana, during April, which has gone from an attendance of 200, three years ago, to 2,000 last year. Most of those attending the Pollock Bluegrass Festival, camp out and play an instrument themselves, says Johnnie. There's a covered stage for the performers, but the seating for the fans is out under the stars beneath beautiful trees lining a small creek.

After the performers finish playing for the evening, the audience gets out their instruments and jam sessions can be found throughout the campsite. Some of these jam sessions have been known to continue until the dawn of a new day.

For those of you who would like to experience the sound of Bluegrass

Continued on page 3

Return IPI Cards — Like Right Now!

Remember those cards you received on March 20? Well they **must**, repeat, must be returned, whether or not you wish to remain in or enroll in Shell's revised Income Protection Insurance Plan (IPI).

IPI is a plan which continues income to employees whose earnings are reduced, or stopped, because they are unable to work due to sickness, or to a disability not related to the job. Such benefits supplement those provided under the Shell Disability Benefit Plan, for which Shell pays the entire cost.

The revised IPI Plan makes it possible for eligible employees to join without evidence of insurability, and it offers some significant new weekly benefit options.

The present seven-tier weekly benefit options, ranging from \$65 to \$200, will be replaced by two options directly related to your base monthly pay. These will be:

- One-half base pay, subject to a \$300 weekly maximum benefit, and,
- One-fourth base pay, subject to a \$150 weekly maximum benefit.

As a result, the amount of your weekly benefit will be determined by your base pay and the option you select. In the event your base pay changes, the amount of premium will be adjusted so that the correct proportion of coverage will be maintained.

The new options will be effective for disability absences commencing on or after May 1. However, due to statutory

limitations, no changes will be made in the New Jersey or New York Plans. Nor will the changes affect employees in either California or Hawaii, who have their own plans.

At the moment, the Plan is open to all eligible employees without evidence of insurability. Even if you have been turned down before because you couldn't produce satisfactory evidence for the insurance company that you were A-OK, you won't be turned down now.

Provident Fund News

The trustees of the Shell Provident Fund have resolved to transfer that portion of the Equities Fund currently managed by Manufacturers Hanover Trust Company (approximately \$56 million) to Fayez Sarofim and Company of Houston for management, effective as of the close of business on March 31, 1979. Based upon the market value of the entire Equities Fund, a single unit value will continue to be computed semimonthly.

The Provident Fund valuation is as follows:

Equities Fund
February 28 - \$2.688

Shell Stock Fund
February 16-28 - \$33.106

Machinist Dies

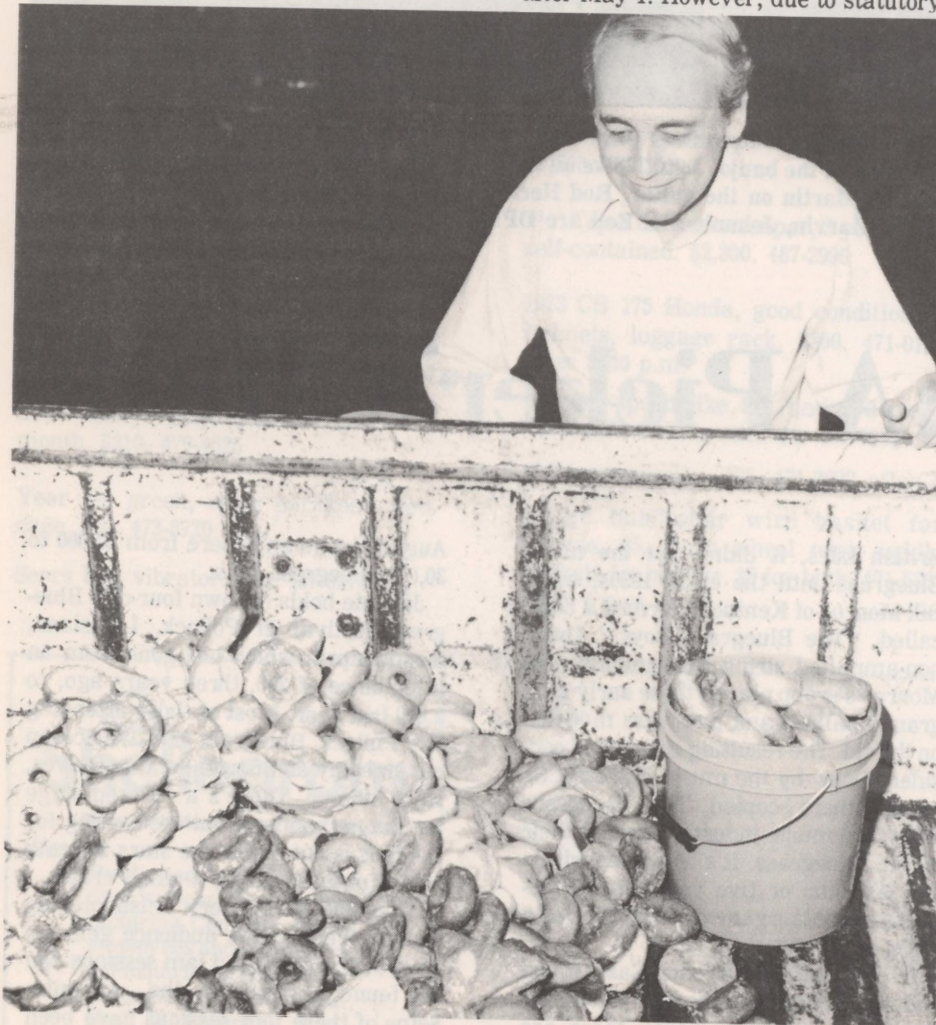
C. H. "Charlie" Rusk, 62, died March 13.

At the time of his death, he had 31½ years of company service and was a machinist in Maintenance South.

Funeral arrangements were handled by the Pasadena Funeral Chapel with burial in Grandview Memorial Park.



RUSK



A Truckload Of Donuts

Donut, anyone? There's plenty for everyone in the back of this pickup in the refinery west parking lot. Strangely enough, they appear to be fresh. Checking out the flavors is Dudley McCarty, senior E-R assistant, Scheduling.

Bluegrass

Continued from page 1

closer to home, there's the monthly show at Tarkington Prairie, located between Cleveland and Dayton, just off 163. The show, held the first Saturday of each month, features the Bluegrass Ramblers and other groups in the area or those who might be visiting.

Johnnie's Bluegrass Ramblers have six members, with half working at the DPMC. H.L. "Rod" Herrod, a carpenter in Maintenance South, plays bass and sings bass every chance he gets. Marvin H. Hutchins, a boilermaker in Maintenance North, plays the banjo. Both Rod and Marvin have been with the group for about two years. Of the two, Rod is the comedian. The audiences love him and frequently request to hear him sing - even though he isn't the best singer in the world. Rod loves to sing and the group lets him whenever they can't keep him from it! They've even worked up a couple of numbers where he can sing his heart out.

A student of the violin as a youngster, Marvin taught himself how to play the fiddle and banjo. "He can really play," says a beaming Johnnie, recounting how Marvin fit right in with the group from their very first practice session.

Most Bluegrass musicians play music by ear or from the heart. Very few read music. Marvin is one of those few.

The remaining members include:



Performing close harmony are John Tielke, Kenneth Holder, Rod Herrod and Johnnie Martin. This is one of Rod's favorite songs and he sings his heart out.

Baritone Kenneth Holder on the fiddle. Kenneth is a mechanic for Texas International Airlines. Tenor John Tielke on the mandolin. John is an assistant claims manager for Travelers Insurance. And, Don Eggers playing the dobro. Don is an electrical engineer with NASA and the newest member of the group.

This diverse group gets together to present the audience with Bluegrass - a

close harmony group singing in a higher key than most country groups. Bluegrass rarely features a single singer.

"Let's face it," says Johnnie, "Bluegrass is a picker's music and a listener's music. It's what you play just for the pure enjoyment of playing it. It's something everyone ought to experience at least once. It's a sound and feeling you won't soon forget."



Legislators View CIMA Fire Drill

Texas legislators, aboard the Sam Houston tour boat, view the annual CIMA fire drill on March 3 at the DPMC's fire crew training ground.

Some 20 companies from along the ship channel participated in the fire drill.

Classifieds

FOR SALE

Sears chrome timing light. \$20. Colt Trooper III, 6" 357 mag., new. \$265. 472-5988

4.7 acres in Lomax, 900'x230' of frontage, all utilities. 471-2961

Heathkit metal locator, earphones, new condition. \$50. Olympus compound bow with sight, mint condition, 50 lbs. at 28". \$80. Slant board, like new. \$15. 488-5879 after 5 p.m.

1974 Pontiac Safari 9-passenger wagon, auto, air, power, good tires, clean. \$1,995. 479-9866

Year old female German Shepherd, full blooded, no papers. \$125. 479-5083

1976 Blazer, K-5, 4-wheel drive, locking hubs, 4-speed, manual, radio, P-S-B. \$4,500. 358-4216

Wizard 22" self-propelled lawnmower, new drive wheels, good condition. \$50. 422-5558 after 1 p.m.

1977 Plymouth Volare Premier V8, air, AM-FM stereo, auto, P-S-B, velour interior, vinyl top, 25,000 miles, excellent condition. \$3,000. 527-0886

1972 Buick Rivera vinyl top, P-S-B-W-S. \$2,500. 488-7685

1977 Chevy Monte Carlo, Landau, AM-FM, tilt wheel, swivel bucket seats, vinyl top, very clean. \$4,550. 479-2948

1975 Olds Cutlass Supreme, loaded, 42,000 miles, A-1 shape. \$3,100. 487-2083

Star Craft camper, Starflite 6, 9 months old, sleeps 6, used once, perfect condition, canopy, etc. \$2,250. 472-5646

2-piece couch. \$75. AM-FM stereo system. \$50. 472-6979

3-2-2 brick home in Deer Park, new carpet, drapes, gas grill, all built-ins, corner lot 107'x109'. \$64,000. 479-3961 after 5 p.m.

Fold-out Ouachita camping trailer, sleeps 6, extra top and new tires. \$500. 479-1729

Cutlass Supreme '78, auto, P-S-B, 8-track, cruise, tilt, velour seats. \$5,995. 864-3442

42" 4-blade attic fan, good condition. \$40. 471-0379

1975 Chevy crew cab, 3+3, great shape, air shocks, dual gas tanks, 42,000 miles. \$4,000. 10 1/2' cabover camper, refig, stove, oven, sleeps 4, mounted jacks. \$700. 487-5256

1973 Honda 450CB, 9,600 miles. \$375. 487-5256

16 cu. ft. bronze refrigerator, good condition. \$125. Tan recliner, excellent condition. \$100. 6' circular gold couch, fair condition. \$75. 479-5399 after 4
WANT TO BUY

Rototiller, any kind, any condition. 471-2961

Self-propelled lawnmower with grass catcher. Under \$75. 334-2008

PERSONAL

We sincerely appreciate the thoughtfulness shown by David's co-workers to our family since David's accident. Thank you.

- David, Madeline and Alison McGallion

Sincere thanks to my many friends at Shell. The scanner will fill many pleasant hours during my retirement. The money and gift certificates bought dishes which we will enjoy.

- K. C. Walker

To all our friends at Shell these past 40 years, Geneva and I would like to express our sincere appreciation for your friendship and support prior to retirement, the retirement parties and gifts. Above all, we express our gratitude for the very sincere support during my recent illness. It helped so much to speed my recovery. Our home address will be Forest Cove Subdivision, Point Blank, Texas. We sincerely invite you to stop by any time.

- Harold and Geneva Neal

C.U. To Meet

Tomorrow evening at 7:30 p.m. is the annual membership meeting of the Shell Federal Credit Union at the Gaines Y. Mason Auditorium in Deer Park.

All Credit Union members are invited to attend.



Deer Park Manufacturing Complex

Published weekly by Shell's Deer Park Manufacturing Complex for its employees and pensioners. All inquiries should be addressed to **Shellegram**, Shell Oil Company, P. O. 100, Deer Park, Texas 77536.

Dotti West - Editor