

SHELL CHEMICAL FORMS NEW POLYMERS DIVISION
BY SYNTHETIC RUBBER & PLASTICS & RESINS MERGER

Shell Chemical Company's Synthetic Rubber and Plastics and Resins Divisions will be merged to form the Polymers Division, as announced by J. B. St. Clair, President Shell Chemical Company.

M. E. Robinson, presently General Manager, Synthetic Rubber Division, will become General Manager, Polymers Division. J. W. Elger, General Manager, Plastics and Resins Division, will continue temporarily in his present capacity to assist in an orderly and prompt structuring of the new Division.

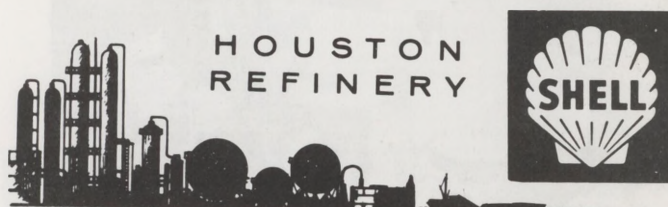
The following have been named to the Polymers Division:

W. D. Kinney, Manager Manufacturing. He presently is Manager Manufacturing, Plastics and Resins Division.

N. R. Legge, Manager Research and Development. He presently is Manager Research and Development, Synthetic Rubber Division.

(Continued on Page 3.)

SHELLEGRAPH



No. 360

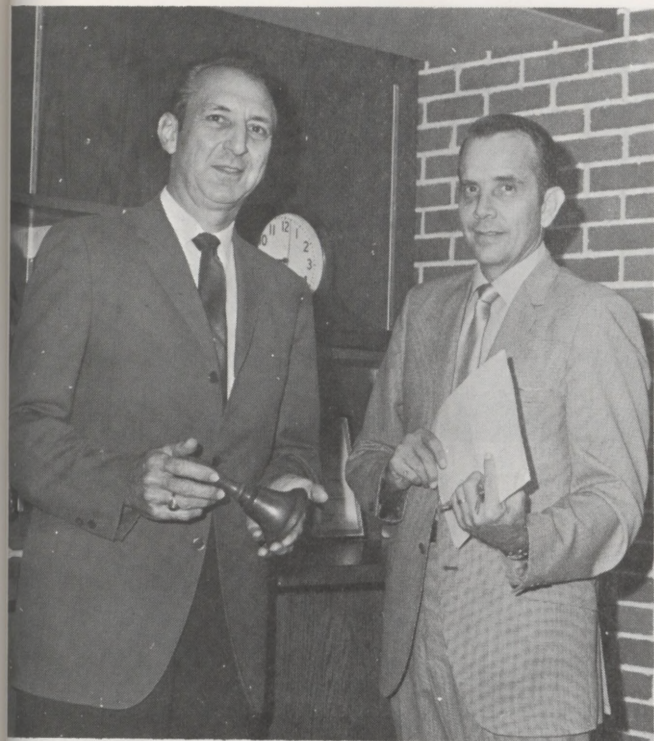
Friday, October 31, 1969

PLAY THE SAME BRIDGE HANDS AGAINST 300 PAIRS
IN 24 LOCATIONS FROM ATLANTA TO ZAMBIA

Shell employees and families in Houston who are bridge enthusiasts have been invited to participate in the Fourth Shell Worldwide Bridge Tournament and Houston Championship.

The Houston branch will be held Wednesday, November 12 at 7:45 p.m. at the Bridge Studio of Houston, 2425 Norfolk (near Kirby at Southwest Freeway).

The tournament is open to Shell Employees or their wives or husbands and their children. Reservations, preferred but not needed, can be made with S. C. Slaymaker at the Refinery. Other Shell locations also have bridge enthusiasts who are taking reservations. Entry fee is \$2.50 per pair. The tourney is a simultaneous Pairs Duplicate.



THE KEEPERS OF THE SCHOOL BELLS--New Deer Park School Board President, W. D. Antone, left, and Superintendent of Schools, Dr. Sebron Williams, are responsible for the administration of the ever-growing school system which has completely modernized in the 40 years since this old bell announced class. PRESIDENT W. D. ANTONE AND SCHOOL BOARD HAVE BIG PLANS FOR DEER PARK SCHOOL DISTRICT

Monday night the seven members of the Deer Park School Board decided to hold a \$12 million bond election in December which would provide for the increasing needs of the growing population.

W. D. Antone, the newly elected president of the Board who is an Operations Foreman in the Refinery Lab, said the bond issue would take care of projected needs of the school district through 1972.

Taking a great deal of pride in the School District, Antone feels that the system must continue to grow in order to keep its high ranking among other systems in the U.S. The board proposes to build two elementary schools, one junior high and a high school if the bond issue is approved.

The Deer Park District was among the first to institute team teaching programs which had been proved and tested in other schools. The new Deer Park Elementary School is known
(Continued on Page 3.)

PRESIDING AT MEETING--W. D. Antone, fifth from left, presides at meeting of School Board of Deer Park. This was the scene Monday night when the seven member board heard reports and decided to hold a bond election in December. Other School District officials are also seated at the table.



DEER PARK RIDING CLUB CLOSES SUMMER EVENTS
WITH ANNUAL FAMILY DAY BARBECUE & TOURNEY



BENEFACTORS ATTEND BARBECUE--Constable Jake Bussey, Mayor Earl E. Dunn, Claude Burgess, Councilman Jim Burke, front row, and Judge Bud West, Councilmen Stanley Young and Bill Black and former Councilman E. M. Maxwell who enthusiastically support the Deer Park Riding Club activities enjoyed the events.



FAMILY MEMBERS--Left, Claude and Margie Burgess along with grandson Greg are members as well as W. N. Shaw, Tommy Huffman (center), and Tom Davis and daughter Tammy (right).

The families who are members of the Deer Park Riding Club ended the summer of activities with the annual family day barbecue recently.

Children and adults took part in barrel racing, pole bending and other events for the last time this season. Trophies were awarded to the contestants with the best time in each event.

Families watched their children show off their equestrian skills and enjoyed the barbecue.

Shell employees who are members include Claude Burgess, President, Walter N. Shaw, Tommy Huffman and Tom Davis.

SHELLEGRAPH

Published by Shell Oil Company for its Houston Refinery and Houston Research employees at Deer Park, Texas 77536.

Mrs. J. B. Ochoa—Editor

Reprints allowed only by request. To submit news and photographs, call extension 541 or send material to Room 103, Main Office Annex.



RING RACE--Going by like a streak of lightning, Terry Shaw tries to get the brass ring.



SHELL MONEY GIVES GHETTOS A HELPING HAND
BY BOOSTING CAPITAL OF NEIGHBORHOOD BANKS

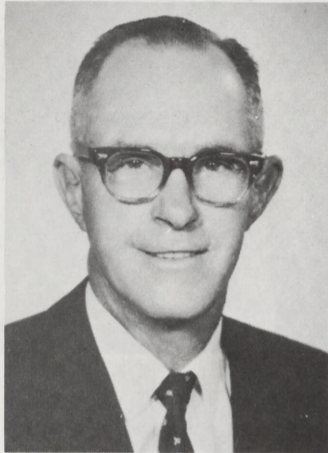
Free enterprise can help solve the problems of the ghettos, Shell believes. The company is backing up this belief by depositing tens of thousands of dollars in ghetto-area banks which provide commercial loans to minority-group businessmen.

Fifteen banks and five savings and loan associations in 10 cities across the country are loaning money deposited by Shell within the past year, under a program for which nearly \$1 million has been earmarked. Additional lending institutions will be selected.

"We believe that one meaningful way for Shell to make a public affairs contribution to the economic development of urban centers is to deposit funds primarily in black-owned commercial banks, and secondarily in non-black banks that are actively providing commercial loans to minority-group businessmen," says Shell's Vice President-Finance J. A. Horner. Such deposits, Horner adds, help "improve the social and economic prospects of communities in which Shell operates, which it serves, and from which some of its future workers will come."

The cities where Shell has made or will make deposits in ghetto-area banks are New York, Atlanta, Chicago, Los Angeles, Washington, Richmond, Boston, St. Louis, Houston, Nashville, Seattle, New Orleans and Columbia, S. C.

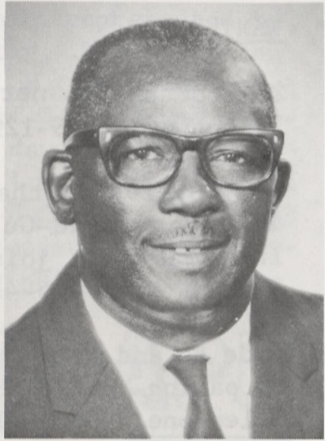
SERVICE ANNIVERSARIES



40 Years
N. F. Gilliam
Engineering Field

25 Years
E. Adams
Lube Oils

25 Years
R. Baker
Lube Oils



25 Years
V. M. Calhoun
Aromatics

25 Years
E. Stevens
Lube Oils

W. D. ANTONE AND SCHOOL BOARD--

(Continued from Page 1.)

as the "One Room Schoolhouse" because children of all grades are placed in one room for each subject. In this way several teachers give the children a team effort in teaching and each child learns each subject at his own pace.

Antone was elected to the board last year and was named president by the board members a few weeks ago. He will serve for one year.

The board meets in general session once a month and has two or three working meetings a month. Antone presides at the meetings and he, and the other six men see to administrative matters for the system which includes five elementary schools, two junior highs and one high school.

The field of education is not new to Antone who holds a B.A. and M.A. in music education and a teacher's certificate.

He and his wife have three children. The youngest, Brian, worked at the Refinery this summer.

CENTER & 8TH SERVICE STATION SERVING CUSTOMERS AS REFINERY ENTRANCE FACILITY IS BUILT

The new Shell Service Station at the Refinery entrance will be finished soon if construction continues at present pace. In the meantime, the G. T. McGee Shell Service Station on Center Street is open 24 hours a day, seven days a week, offering full pick-up and delivery service for all its customers.

The new phone number is GR 9-1158.



FAREWELL PRESENTATION--Walt Hale, right, who became the new Employee Relations Manager at Shell Chemical, accepts gift from his department presented by I. R. MacIver, Manager, Employee Relations.

SHELL CHEMICAL FORMS POLYMERS DIVISION-- (Continued from Page 1.)

K. V. Erdman, Manager Marketing, He presently is Manager Marketing, Synthetic Rubber Division.

W. A. Ross, Manager Finance. He presently is Manager Finance, Plastics and Resins Division.

W. L. Holmes, Manager Division Planning. He presently is Manager Marketing, Plastics and Resins Division. This is a new post concerned with business coordination and planning, commercial intelligence, and subsidiaries.

The new Polymers Division is expected to become operative about January 1, 1970. Until that time, the present Divisions will continue to report as separate entities, although the new management team will take over joint operations and begin to merge toward the new organization as quickly as possible.

UTILITIES DEPARTMENT HOLDS SAFETY PARTY



GUESTS--L. H. McDonald and Paul Rinehart enjoyed the festivities.



HONOREES--Utilities employees and guests at the dinner were F. M. Angel, second from left, and his date Vicki, and Florence and Willie Strait.



IN BUFFET LINE were Mr. and Mrs. H. J. Smith, Mrs. and Mr. W. D. Fransaw and John Harkness.



AT DINNER--Florence Strait, Van and J. D. Brunston liked the opportunity to meet department members again.

CLASSIFIEDSFOR SALE

Gas cookstove, \$15.
Telephone: 473-0707

Twin bedroom suite in good shape, with mattresses and springs. Will take \$50.
Telephone: GR 3-0053

1969 Malibu Sport Coupe, air conditioned, power steering, the works. Assume note--or get new note.
Telephone: GR 2-1658. Call before noon or after 5:30 p.m.

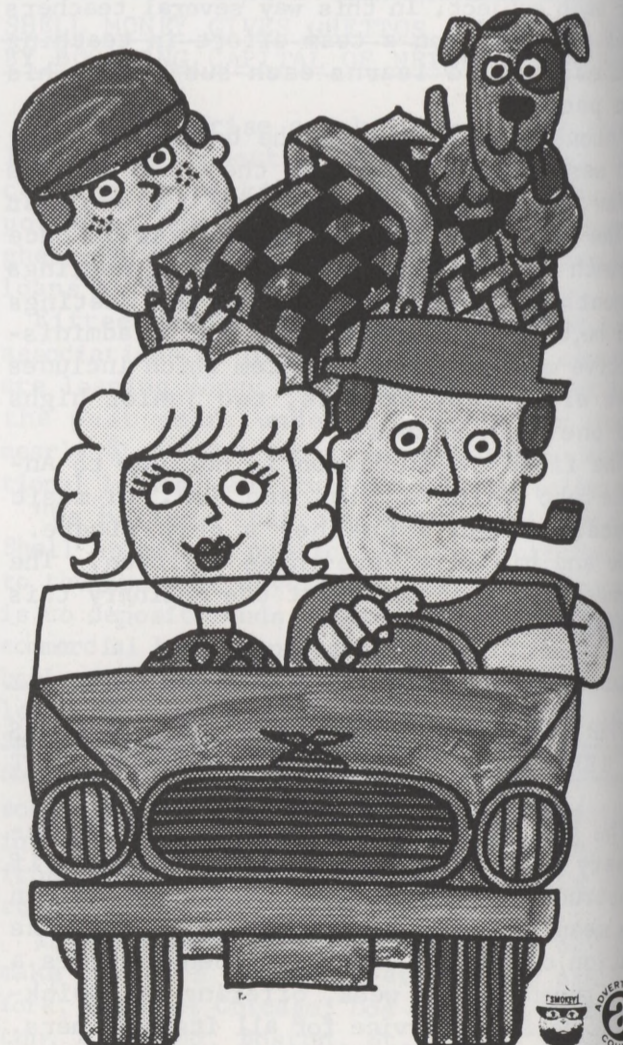
WANTED

20 Foot shrimp net complete.
Telephone: 479-1295 after 5 p.m.

Do you live in the approximate vicinity of Telephone Road-Gulf Freeway intersection? Interested in joining a car pool?
Telephone: 645-4314

Ride to and from work from downtown LaPorte on paying basis. 8-4:30 shift.
Telephone: GR 1-4186

When you cook out in the woods, be sure all you burn are the hamburgers.



Remember, only you can prevent forest fires.

