

Shellegram

Deer Park Manufacturing Complex

Thursday, November 3, 1977

Vol. 42, No. 41

Highway 225 Improvements Begin This Week

Work on more than \$4.6 million in improvements to State Highway 225 began this week and is expected to take about two years to complete.

The improvements will result in six lanes of highway from Ethyl Road west of the DPMC to the Battleground Road east of the Complex. Under the program, portions of the existing highway will be widened and a new three-lane frontage road will replace the existing west bound highway from State Highway 134 to the railroad overpass.

A new computerized traffic signal system to improve traffic flow along Highway 225 is also included in the program.

The improvements were initiated by a Shell-sponsored traffic survey conducted in 1975. Shell provided the results of that study to local officials who were successful in getting the state Highway Commission to adopt the recommended improvements.

Construction began October 1 and is scheduled to take 250 working days or about two calendar years. The exact construction period will depend upon a number of factors including the weather.

State Highway Department officials said that the work has been planned to minimize interference with the flow of traffic. During construction, four lanes of highway will remain open at all times. There will, however, be a 35 mph speed limit in the construction area.

The project is divided into two sections of work that will be accomplished simultaneously. The first section will widen the east bound roadway by adding a third lane along a four mile stretch from west of Beltway 8 to Battleground Road. Section two will in-

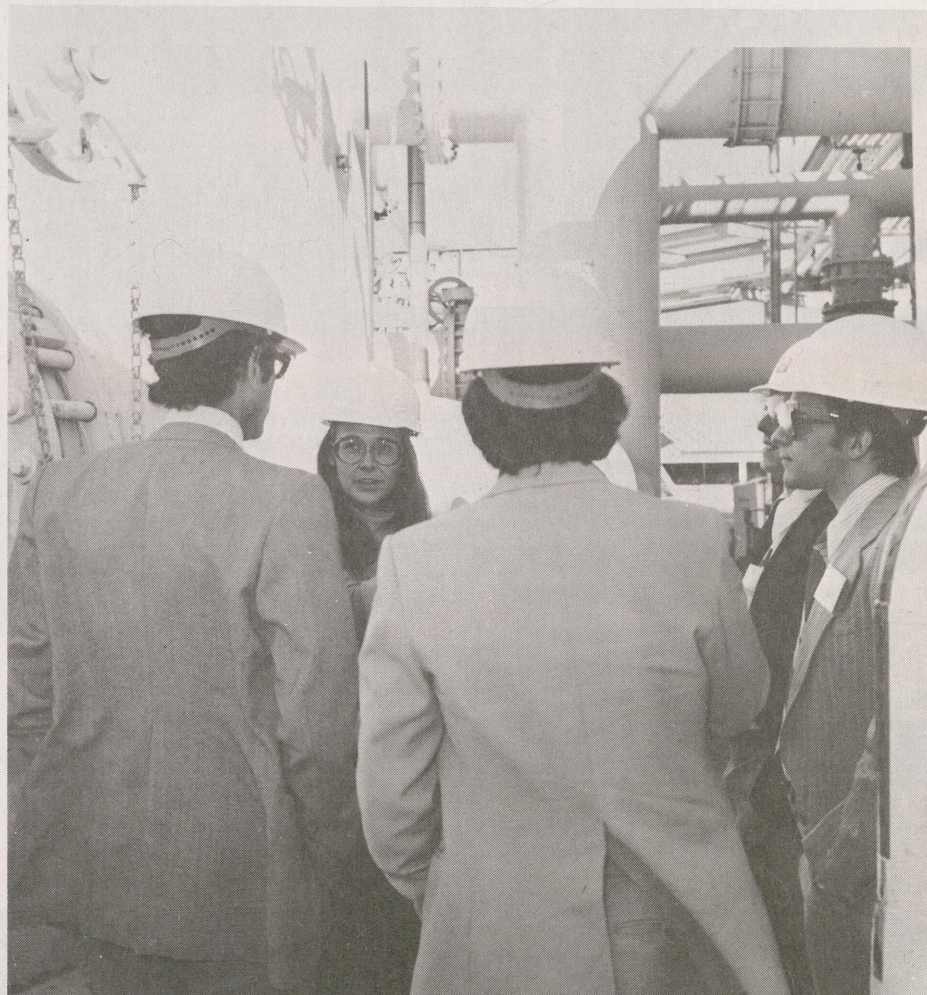
clude the new frontage road for west-bound traffic.

Shell is working with the contractor to coordinate that construction which will affect entrances to employee and contractor parking lots. Obstruction of these entrances will be kept to a mini-

mum and alternate access routes will be provided when interference is necessary.

Shell employees will be given advance notice in the Shellegram and by bulletin boards when the use of alternate entrance routes is required.

Visiting Employees Tour Effluent Treaters North Effluent

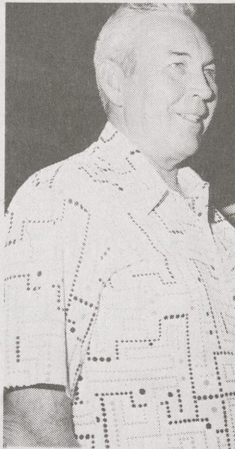
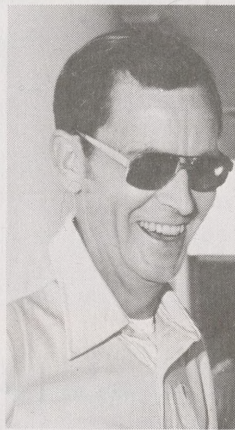
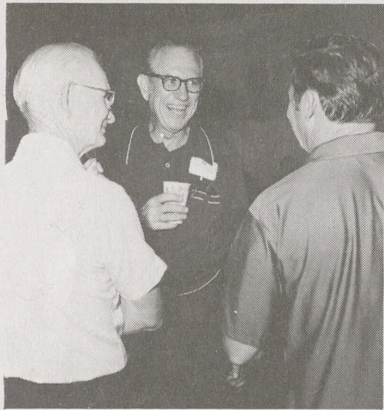
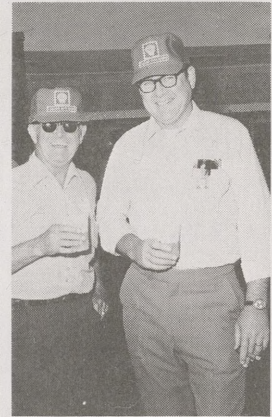
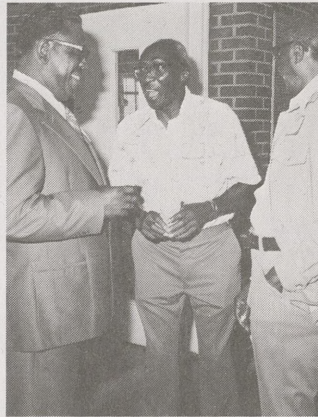
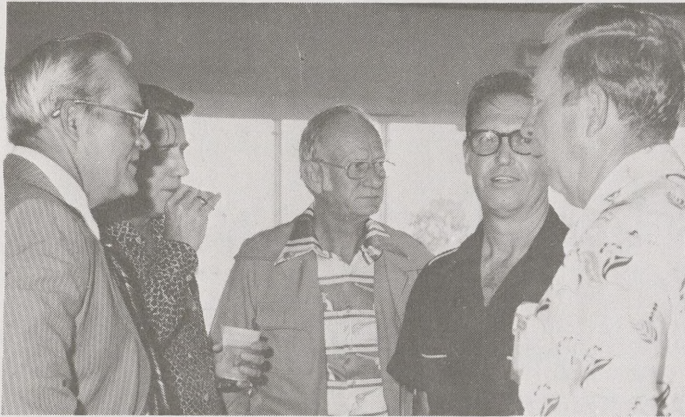


Shell Oil and Shell Development Company employees, along with employees of associates abroad who are involved in waste water research met October 10 to 12 at Westhollo. The 25-member group exchanged ideas, pinpointed problems and targeted research goals for waste water treatment.

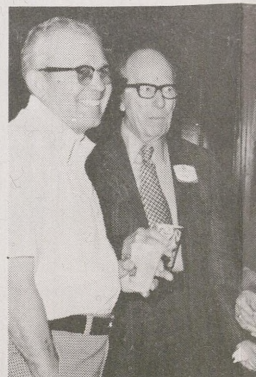
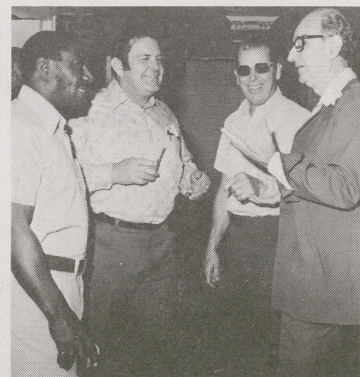
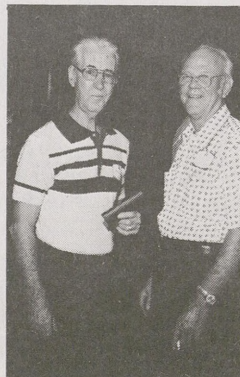
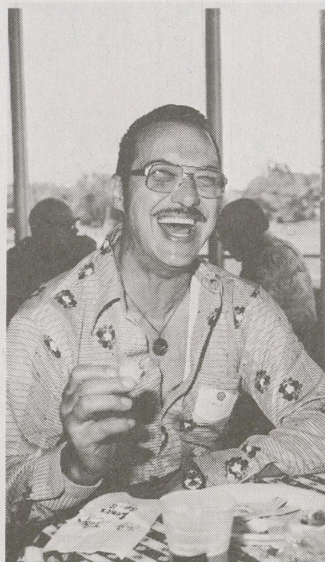
The meeting provided an up-to-date report of waste water research and provided personal contact between employees involved in the field throughout Shell and in associate companies. The group toured Deer Park Manufacturing Complex waste water treating facilities at the end of the meeting. Environmental engineer Cindy Graham briefs several members of the group before showing them the recently completed effluent treaters north.

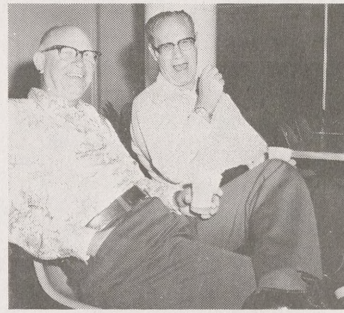
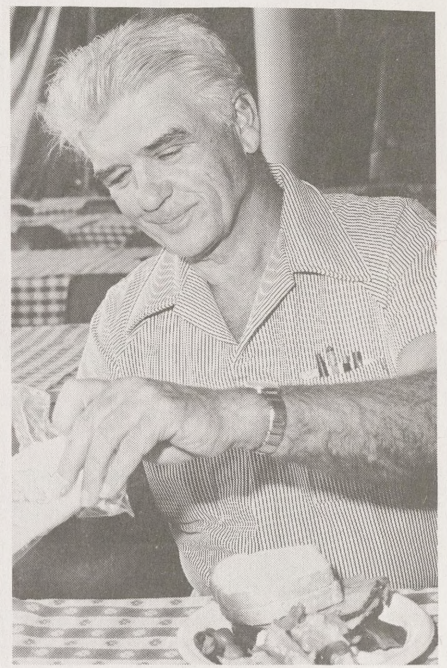
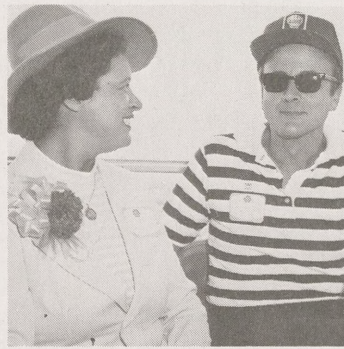
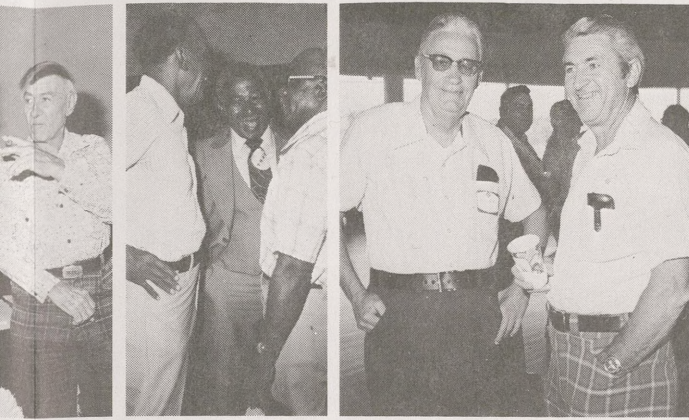
Blood Pressure Testing Scheduled

It only takes a few seconds to have your blood pressure checked, yet it may save your life. Testing will be done from 11:15 a.m. - 1:00 p.m. and 2:15 p.m. - 4:30 p.m. on November 9 and 11 at the refinery cafeteria and on November 16 and 18 at the chemical plant cafeteria.

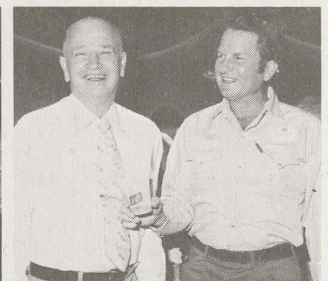
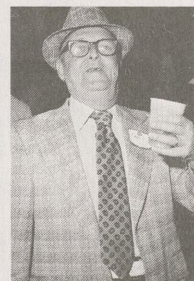
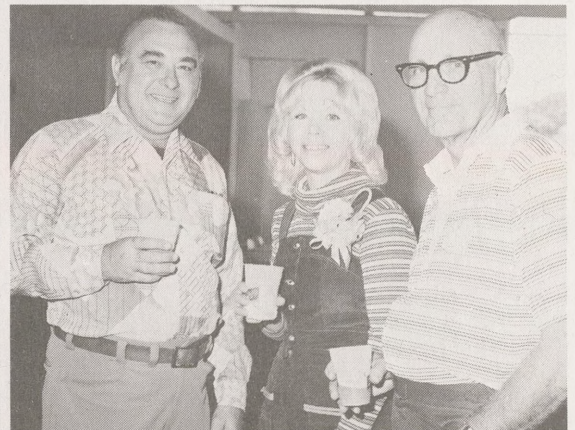
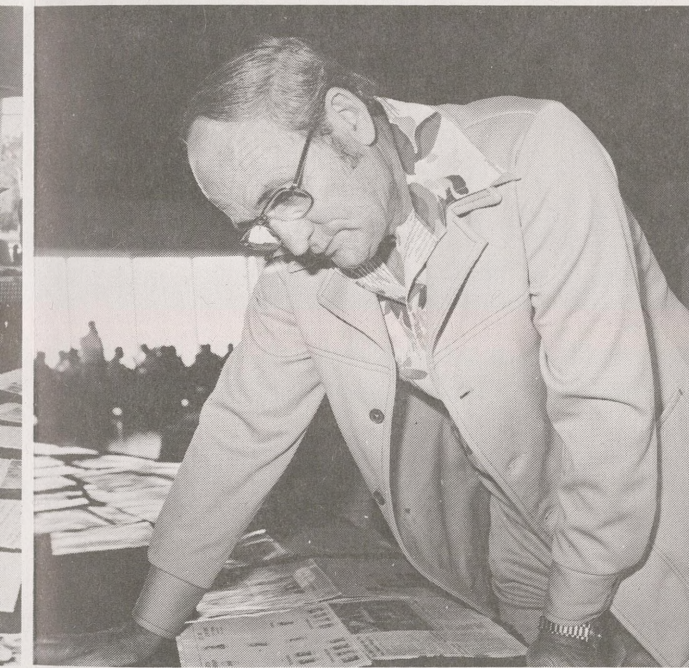


Employees and retirees had a good time. Activities included finding long forgotten friends, drinking and greeting old acquaintances.

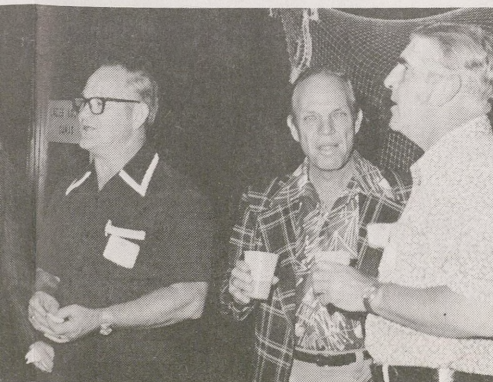




Annual Ten-and-Over Parties



...d time at the annual Ten-and-Over Parties. Ac-
ten faces in back Shellegram issues to eating,
tances.



Classifieds

FOR SALE

12' x 56' Challenger mobile home, 2 BR, 1½ baths, central heat, air unit, partly furnished with Tappan range, GE refrigerator, couch and built-in dressers, good condition, to be moved from Lake Sam Rayburn. \$5,000. Write Eddie Madden, Rt. 1, Box 489, Plum Ridge, Zavalla, TX 75980 or call 71 3-384-5005

Ash blond twin beds, mattresses and springs, double dresser, night stand. \$150. Manual typewriter. \$40. Lowrey organ. \$300. 673-1130

1969 MFG 17', 125 hp Mercury trailer, mooring cover, very nice. 333-2041 after 6 p.m.

New Yamaha YZ 175cc motocross bike. \$900. Roberts reel to reel tape deck. \$100. 481-9241 after 6 p.m.

1973 Impala custom coupe, air, power, radio, V8, excellent condition. \$1,800. 926-4257

Complete set of baby furniture (except for crib), excellent condition. \$75. 473-3709

Thomasville French provincial fruitwood dining table with two 12" extensions, 2 arm and 4 straight covered chairs and breakfront. 482-5011

4-2-2 Glenbrook-Hobby 1½ story brick house, detached garage, large yard, fenced, trees, convenient. Reduced. 482-5011.

1977 El Camino classic, loaded, 3,400 miles, like new. 455-7393

1972 Chevrolet Impala 4-door H-T, air,

good condition. \$1,295. 328-1407 or 455-7393

1975 Pontiac Astre, P-S, air, new radials, excellent condition. 1959 Chevy, new tires and battery, dependable. 479-7260

1975 Itasca motorhome, rear bath, 5KW generator, 2 roof airs, cruise, CB, lots more, excellent condition. 479-7260

Curtis Mathis stereo 100" long in beautiful cabinet, great sound, perfect condition. \$200. Roper gas range, good condition. \$65. 941-6687

Weatherly Vanguard 300 Winchester magnum with sling, 3 x 9 Leupold scope. 455-6686 after 5 p.m.

Two nearly new 14" Ford wheels off 1973 Ford. \$25. 328-2807

1974 Jeep quadtrack, P-S-B, air, radio, gun rack, mag wheels, 4 snow-mud tires and rims, 30,000 miles, bucket seats. \$3,100. 664-9095

Studio lights - 3 fan cooled light heads with reflectors, power pack, 4 light stands. 1-653-4156

1974 Toyota land cruiser stationwagon, looks and runs like new, 4-wheel drive. \$4,195. 1-389-2206

1976 Suzuki 380A, windshield, hi-way bar with pegs, sissy bar, storage bag, looks sharp, excellent condition, 3,400 miles. \$1,195 or best offer. 458-2299

1965 Corvair Monza 110 2-door, good body, restored interior, excellent condition, new tires, rebuilt brakes. \$695 or best offer. 458-2299

Stereo component system, QX747 receiver (Pioneer), Pioneer HR-100

Dolby 8-track player and recorder, duals PE3060 fully auto turntable with Shabata cartridge and 4 ECI 125 3W speakers, 1½ years old. Best offer. 479-5452

Antiques: oak pie safe, washstand, pine washstand with tile back and marble top, oak drop front, two drawer desk. 472-3048

25" Sylvania color TV, new picture tube. Toro lawnmower. 472-3048

1975 Chevy van P-S-B, air, mag wheels, side pipes, stereo. 941-3272 after 5 p.m.

WANT TO BUY

Ruger pistols, Ruger pistol boxes, brass grip frames, grips, parts, Ruger drills and other tools marked Ruger. 926-2743

3-2-2 house in Clear Lake area after February or March, prefer under 5 years old and under \$51,000. 472-2901

FREE

6 week male puppy, part collie (?), needs children. 941-5903

FOR RENT

3-1-1 house in Galena Park, air, central heat, fenced yard. \$265 per month. 664-9095

FOUND

Yale key on long chain. Claim in room 151 of the Refinery Administration Building.

Money clip with initials. Call Korenek on 7126.

Will whoever found a black transistor radio at the foot of flagpole on Sunday, 10-30, please return it to Chemical main gate.

PERSONAL

Margaret and I wish to express our thanks for the gifts and plaque, and especially for the well wishes. We hope all of you fulfill your wish for a happy retirement.

—Milo Muscarello

P. O. Box. 100
Deer Park, Texas 77536



Deer Park Manufacturing Complex

Published weekly by Shell's Deer Park Manufacturing Complex for its employees and pensioners. All inquiries should be addressed to Shellegram, Shell Oil Company, P. O. 100, Deer Park, Texas 77536.

Dotti West - Editor