



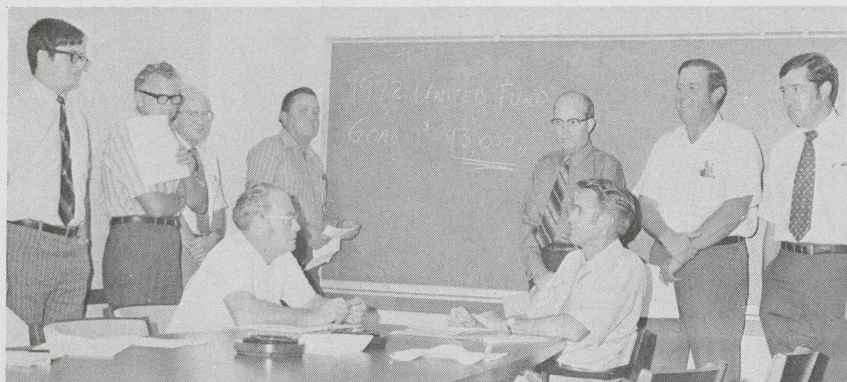
# Shellegraph

Houston Refinery

No. 32

Friday, August 27, 1971

## UNITED FUND COMMITTEE ANNOUNCES STAFF SOLICITORS



At the initial UF committee meeting to plan the campaign and set the goal were Dick Murray, Ray Crawford, Bill Lewis, Joe Allen, Hershall Arnett, Henry Krebs and Jack Cox. Seated are Co-Chairmen Bob Vanston and Bill Loveless. The drive is held jointly with OCAW Local 4-367, AFL-CIO and Shell.

Staff solicitors for the 1972 United Fund campaign have been announced. These solicitors will be contacting staff employees during the period of September 20-22 in an effort to raise the \$43,000 the Refinery committee has set as a goal.

Solicitors will distribute pledge cards in advance to employees who will be on vacation during the drive.

Included are J. E. Garrison, Aromatics; A. F. Ott, Cat. Cracking; H. M. Sims, P. E. Carter, and H. C. Blaylock, Dispatching; J. L. Newlin, Distilling; L. A. Gruber, Effluent Control; D. D. McManus, Economics & Scheduling; H. E. Wallace, F. F. Lewis, H. H. Wagner and G. L. Hatfield, Engineering Field. Others are W. R. Knowles, Engineering Office; W. H. Patterson, Engineering Services; W. L. Carraway, Safety; J. R. Ryan, Gas & Thermal Cracking; F. G. Remkes, Lube Oils; Mrs. V. Cartwright, Employee Relations; J. C. Muyres, Refinery Laboratory; and K. G. Jones, Tech.

Others are Mrs. G. Y. Elliott and Mrs. L. M. Cusick, Treasury; R. J. Dudley, Utilities; and J. E. Wheeler, Computer Control Applications.

Research solicitors are M. L. Andre, N. T. Babcock, A. Chou, F. O. Cochran, J. D. Cornell, W. L. King, J. J. Leonard, V. J. Moravec, D. A. Novacek, R. E. Robinson, L. Scott, S. C. Smelser, J. E. Stanley, C. A. Trevino, and B. H. C. Winquist.

Hourly solicitors will be named next week.

## YOUNG NEVER WERES TEAM ACCEPTS HAS BEENS' CHALLENGE, BUT IT RAINS

The Has Beens needed all the help they could get when they accepted the challenge from the young Never Weres team to a softball game Wednesday. The HB manager, Bob Tucker, even kept his lineup under wraps until the last minute.

"I can't tell you who's going to pitch or anything like that, but I can say we're

(Continued on Page 4.)

## BRYANS MILL GAS PLANT EXPANSION SLATED FOR YEAR END COMPLETION

Shell Oil Company will expand its Bryans Mill gas processing plant by the end of the year, Dan Nicewander, superintendent, said recently. The plant is located about 20 miles west of Atlanta in northeast Texas. Nicewander made this announcement before the Atlanta Lions Club.

According to Nicewander, the project will include enlarging the natural gasoline plant and adding pumping capacity to the treating unit. He said this is the fifth expansion since the plant went into operation in 1962.

Nicewander pointed out that this growth at Bryans Mill probably would have been impossible had Shell not installed a reservoir injection system in the condensate-rich fields of Cass County. This system is a major factor in prolonging the life of one of the richest gas condensate deposits in existence, he said.

Reservoir injection was started in 1965 after Shell engineers determined that underground gas pressure--the force that pushes oil and gas to the surface--was declining rapidly.

## DON JENNINGS, 4-H KIDS TO APPEAR ON ROESNER'S TV SHOW SATURDAY

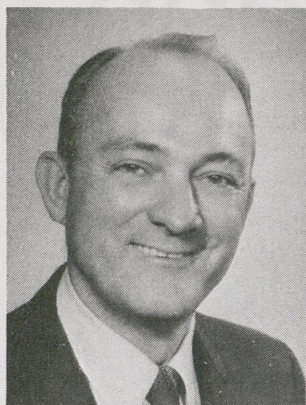
Don Jennings, Senior Employee Relations Assistant, ER, and four 4-H Club members will appear on the George Roesner show on KPRC-TV, Saturday morning at 6:30.

The group will be publicizing the San Jacinto County Fair of which Don is president of the Board. Don and each of the 4-H students will speak on their activities in the 4-H which are connected with the Fair and Houston Livestock Show.

The County Fair will be held September 30 and October 1-2.

After the group taped the show on Thursday morning, Roesner gave them a tour of the studio.

## SERVICE ANNIVERSARIES



25 Years  
C. E. Davis  
MTM Lab



25 Years  
F. F. Guidry  
Eng. Field

## AD RULES RESTATED

Because of some confusion among our readers, the following are new guidelines for submitting ads which have been in effect for several months:

1. All ads must be submitted in writing, including item, price, your name, home telephone number and plant extension.
2. Ads must be turned in to Shellegraph office no later than 9 a.m. on Wednesday.
3. Ads are only published once unless submitted again by employee.
4. Ads are for the convenience of employees and their immediate families.
5. No ads taken over the telephone.

## NON-PROFIT CREDIT UNION SAVES YOU INTEREST RATES AND EARNS MONEY

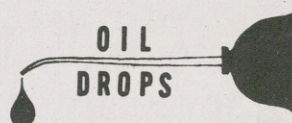
As an employee of the Refinery, you are eligible for membership in the Shell Refinery Employees Federal Credit Union in Deer Park.

The Credit Union was organized in 1938, and today has approximately 8,500 members. It has no official connection with the company, but only employees of the Refinery and Chemical Plant are eligible to be members.

A credit union is a non-profit organization chartered and regulated by the government. It is made up of people who share a common bond (such as working at the Chemical Plant or Refinery) and participate in a mutual-help financial institution. Its members save their money together, earn a return on their investment, and loan money to each other at a reasonable interest rate.

Since the organization is non-profit, you can save on interest rates on loans or enjoy a good dividend on investments. You can borrow up to \$10,000 and receive special attention because you are more than a customer, you are a part owner of the organization.

Credit union members receive free loan insurance on loans to \$10,000 and investments to \$1,000, free notarial service, and reduced rates on travelers checks and money orders.



Science and skill, a sage once noted, will always triumph over ignorance and superstition.

But come high noon Sept. 1 some of the most scientific and skillful shotgunners in the world will manage to look ignorant and superstitious.

It's opening day of the dove season for Texas' North Zone.

Thousands of Texas hunters will fire countless thousands of dollars worth of powder and shot from the most advanced scatterguns devised by man in an effort to bring down a bird scarcely weighing four ounces.

At first glance, this confrontation would seem overly one-sided in favor of the hunter. But don't put the dove on your sympathy card list because of this gun pressure.

Texas Parks and Wildlife Department biologists point out that mourning doves--and whitewings as well--combine a remarkable reproductive capacity with some fantastic flying feats to remain populous year after year, regardless of hunting pressure.

And this year's dove crop appears to be on a par with past year's, despite dry conditions in much of the state. As usual, the birds will be highly concentrated in some areas and scarce in others, depending on food availability.

A statewide survey of about 5,000 hunters last year indicated a harvest total of approximately 9.5 million birds. While it is difficult at best to estimate the total population of doves in the state at a given time, biologists know the dove populations have been able to easily withstand the annual harvest.

In the North Zone, the season is Sept. 1 through Oct. 30, from noon to sunset. In the South Zone, the season is Sept. 25 through Nov. 23. In counties which have a white-winged dove season, the mourning dove season ends Nov. 19.

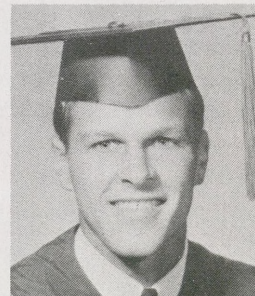
However, mourning doves may be taken during the four-day whitewing season Sept. 4 and 5 and Sept. 11 and 12. In other words, whitewing hunters in the extreme southern part of the state may legally take 20 doves (10 whitewings and 10 mourning doves) daily during the whitewing season which precedes the regular mourning dove season.

## LARRY SHOULTS EARNS DEGREE FROM S. F. AUSTIN UNIVERSITY

Larry Shoults, son of W. L. Shoults, Machinist, #1, Engineering Field, graduated from Stephen F. Austin State University this month.

He received a degree in mathematics and sociology. Larry was a member of Tau Kappa Epsilon social fraternity.

A 1967 graduate of Deer Park High School, Larry plans to pursue his career in the Houston area.



## IMPROVISATION MAY HELP SAVE LIFE, ANY FLOATING OBJECT CAN BE BUOY

The ability to improvise may help you save your life or that of a possible drowning victim in the event of a water emergency.

Every summer nearly 5,000 people die in the process of trying to find relaxation while boating, swimming or fishing. Many times when people see that someone else is in trouble, they are afraid to help because they can't swim well themselves. Many fatal water-related accidents can be prevented by the use of improvised flotation aids.

If there is no ring life buoy or other device around, grab your vacuum jug, or an ice chest with a clamp-on lid, a canoe paddle, a fallen branch, or the spare tire in your car. All these things can be thrown to the person in trouble and can help him stay afloat.

Any floating object can support a drowning person. When in trouble, improvise.

## 3 GALLONS OF GASOLINE USED DAILY BY EVERY MAN, WOMAN, CHILD IN U.S.

On the average, every man, woman and child in the U.S.A. uses three gallons of oil every day. That's just one of the facts the American Petroleum Institute is attempting to get across to the American public in a \$4 million advertising campaign now running on TV and in newspapers and trade journals across the country.

The program is an attempt by the industry to explain the energy story and petroleum's contribution to the American way of life.

The theme of the educational program is "A country that runs on oil can't afford to run short."

Additional facts to be publicized during the campaign include:

- o In addition to using an average of three gallons of oil every day, Americans need 300 cubic feet of natural gas--half again as much as they used in 1950s. It takes thousands of oil and natural gas companies to supply it.

- o Oil and natural gas supply 75 percent of the nation's energy needs; almost all transportation, including gas, and oil for the family car, plus all the tractors and farm machines and large and small motors. Also, most of the energy used for cooking and heating, and about 40 percent of our electricity, including the power for our household appliances and power tools, comes from petroleum. In addition, more than 3,000 different products are made from or with oil and natural gas, including paper, paint, perfume, packaging materials, chemicals, medicines and others.

- o It becomes more difficult and expensive every year to supply all this oil and natural gas. The oil companies of America have to search offshore, in the frozen north of Alaska, in marshes and deserts and rugged, remote country throughout the world, to find what we need.

The U.S.A. and its 205 million people need all the oil industry can find.

## 18th SHELL MANAGEMENT COURSE TO BE HELD IN SAN AUGUSTINE, TEX.

The 18th Shell Management Course will be held at Fairway Farm near San Augustine, Texas, from October 17 through November 4. The course will include presentations by senior managers of all Shell Companies and outside authorities on topics of current managerial interest.

The following will attend:

### Shell Oil Company

G. L. Boom, Eastern Marketing Region; A. L. Bradley, General Services-Head Office; R. H. Brown, HO Manufacturing; W. A. Carpenter, HO Manufacturing; R. L. Cheatham, HO Marketing; A. G. Dempster, Eastern Marketing Region; D. F. Duncan, HO Marketing; D. N. Graves, New Orleans Data Center; R. M. Griswold, Western Marketing Region; T. F. Hart, E&P Economics-HO; J. R. Hoyle, HO Financial; T. G. Johnson, HO Legal; and R. P. Kastner, Wood River Refinery.

Others include G. S. Kukuchek, WOR Division, T&S; W. M. Marshall, III, Southern E&P Region; E. F. McMahon, Central Marketing Region; M. Nager, HO Manufacturing; W. T. Nance, HO T&S; F. Poorman, Southern E&P Region; D. B. Richardson, HO Manufacturing; D. G. Russell, HO Financial; D. F. Stephenson, HO Public Relations; D. P. Walsh, HO Legal; V. G. Whittington, HO Employee Relations; W. M. Winfrey, Western E&P Region; A. A. Winn, Western E&P Region; and W. I. Young, HO MTM.

### Shell Chemical Company

R. C. Dillard, HO; M. K. Seggerman, Petrochemicals Division; R. H. Slaughter, Industrial Chemicals; R. P. Toohy, Marietta Plant; and R. G. Yapp, Agricultural Division.

### Shell Development Company

G. C. Hood, Emeryville Research Center; J. B. Lewis, Emeryville; A. G. Speight, E&P Research Center; and L. J. Tichacek, Emeryville.

The course, held at Arden House prior to the move of Head Office from New York to Houston, provides participants with a broader understanding of:

- o The corporate objectives and policies of Shell's integrated operation.

- o The economic, social and political trends and issues which affect the industry and Shell.

- o Significant theories of modern management.

It also encourages the continuing self development of participants and gives them a broader understanding of how to work effectively with people.

Also attended by four managers from associated companies, the course will include presentations by senior managers as well as outside experts on current topics.

### SHELLEGRAPH

Published by Shell Oil Company for its Houston Refinery and Houston Research employees at Deer Park, Texas 77536.

Mrs. Josie Ochoa--Editor

Reprints allowed only by request. To submit news and photographs, call extension 541 or send material to Room 103, Main Office Annex.

## CLASSIFIEDS

FOR SALE

1966 Ford LTD, 2 door HT with air & power, \$695.

Telephone: 472-6565

1971 "Action Buggy" (Dune buggy), mag wheels, custom carpeted, interior & console, metal flake red, \$995.

Telephone: HU 5-3064 after 6 & weekends

Admiral 2 door, freezer on top, \$50. 2 pair binoculars--1-7x35, \$12, 1-7x50, \$20.

Telephone: 479-1772

German shepherd pups, AKC, shots & wormed, black & smokey grey, \$65 for male, \$40 for females, credit accepted.

Telephone: HU 5-3064 after 6 & weekends

Four 855x15 whitewall tires, 1/4 to 1/3 tread remaining, \$3 each, all for \$10.

Telephone: 946-1612

12 gauge shotgun, ventilated rib & adjustable choke, used 1 season, \$65.

Telephone: 472-1721

390 Interceptor Thunderbird engine, 1963 model. 3 speed '66 model GTO transmission.

Telephone: GL 5-0056 after 3:30 p.m.

Portable & console TVs \$25 each. 1965 Olds Delta 88, 4 dr., a/c, R. & H., \$595.

Telephone: GR 2-5988

Living room sofa, chair, two end tables, cocktail table, and two lamps for sale, reasonably priced.

Telephone: 668-7385 after 5:30 p.m.

Sheridan pellet rifle, like new, 500 pellets, \$25.

Telephone: 946-1981

15' Fiberglass boat, 30 hp Johnson electric-start, nearly new tilt trailer, ski equipment & other extras. \$525 cash.

Telephone: 473-4854

GARAGE SALE: Many baby items (twins); books; table & chairs, portable bar; 3516 Edgefield (off Glenmore in Deepwater area).

1963 Falcon Country Squire. Automatic, new motor. Excellent mechanical condition, \$325.

Telephone: 479-3100

'67 Ford Galaxie 500 2 dr. hardtop, air, auto; loaded, clean, \$850.

Telephone: 453-0231

25 hp Wizard outboard, recently overhauled, excellent condition, \$65.

Telephone: 453-3130

Reynolds Cornet, school approved, good condition, \$75.

Telephone: 481-1585 after 5

Honda 305 completely chopped, lots of chrome, teardrop gas tank, polished heads, \$800.

Telephone: 472-7759

5 piece Spanish dinette, plastic top, \$75.  
Telephone: 523-8982

IBM electric typewriter, early model, \$20.  
7 ft. Charger III Tanaka surfboard, \$65, good condition. Leco lawn edger, \$25.  
Telephone: 946-1867

1968 VW, excellent condition, new automatic transmission, motor, brakes, and wheel bearings. May consult mechanic, \$950.

Telephone: 946-1867

WANTED

Will give a good home to old neglected kitchen type sink.

Telephone: 487-2902

Drafting kit, post #1225 or better.

Telephone: GL 3-7741

FOR RENT

Three bedroom frame house in Alvin, sits on 1/2 acre of land, completely fenced. Central heat, window units. Located on McLenore Drive, \$150.

Telephone: 644-7629 or 585-2825 (Alvin)

### MIGHTY CASEY DIDN'T HAVE CHANCE-- (Continued from Page 1.)

going to embarrass those young upstarts," said Tucker.

The Has Beens roster read like a lineup for the Shell Oilers who were in their heyday in the early '50s. There was Bobby Schroeder, Duke Ellington, Billy Amason, Big Boy Williams, Johnny Campo, Lawrence Mancuso, with a few additions as Bob Tucker, Bob Loucks, Walter Cannon, Dale Johnson, Ken Sparks, Wilbur Knowles, Doug Berger, Mike Tiller, John Nicholson, Boats Whittington and Jim Repp.

The Has Beens were at a disadvantage because their muscle power had been used for other diversions in recent years, while the Never Weres had recently been members of amateur teams in the area. Ed Metzler, Ron Chapman, Ted Sands, Sterling Roig, and Doc Whitney were members of the Engineers team which placed high in a tournament last summer.

Pitcher Ed Swinderman's Wednesday night performance was to have given his team a better chance at the division title than the Astros if those spunky rain clouds hadn't hung in there.

Just as the long awaited match of the ages was to begin after having been rained out twice, a clap of thunder and lightning caused the game to be called because of inclement weather.

Manager of the NW, Ron Chapman, has rescheduled the game for next Wednesday at 6 p.m. at Dow Park in Deer Park, weather permitting, of course.

Rookie players (in the eyes of the Has Beens) on the Never Weres team are Ron Kienle, Pete Samsury, Larry Tinkler, Jim Miller, George Frondorf, George Roe, Bill Patterson, Bill Nail, Jim McCombs and Dan McNeill.

Will there be any joy in Mudville? Or will it rain again? Go to the game and see.